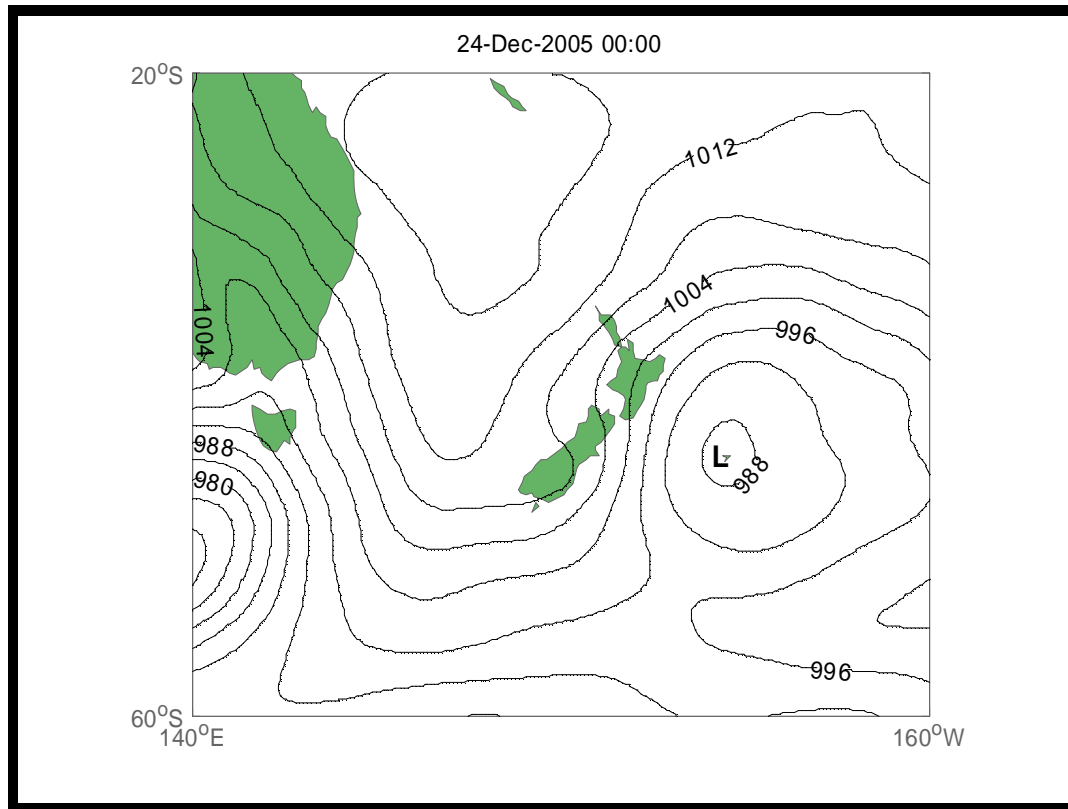


# Coastal Storm Database - Event Summary

Date: <b>23-24 Dec 2005</b>	Wind Direction: <b>S</b>
Event Type: <b>Wind</b>	Gisborne Duration (Hours): <b>-</b>
Location: <b>Wellington</b>	Wellington Duration (Hours): <b>26</b>
Origin: <b>Tasman Sea</b>	Pressure Gradient: <b>S to SSW</b>
Type: <b>East Coast Low</b>	



## Synoptic Conditions

A cyclone developed west of the South Island from a southern ocean trough and moved eastward. On the 23rd this cyclone was over the Chatham Islands, and at the same time, a large anticyclone occupied the Tasman sea and covered the South Island. Between these features a strong S to SSW airstream was created and swept over the eastern North Island and into Cook Strait.

## Maximum Wave Statistics

Location	Max Wave Height (m)	Period (s)
Wellington	8.3	9
Napier	1.9	9

\*Maximum Wave Height