

Supplementary data

Fig. S1.

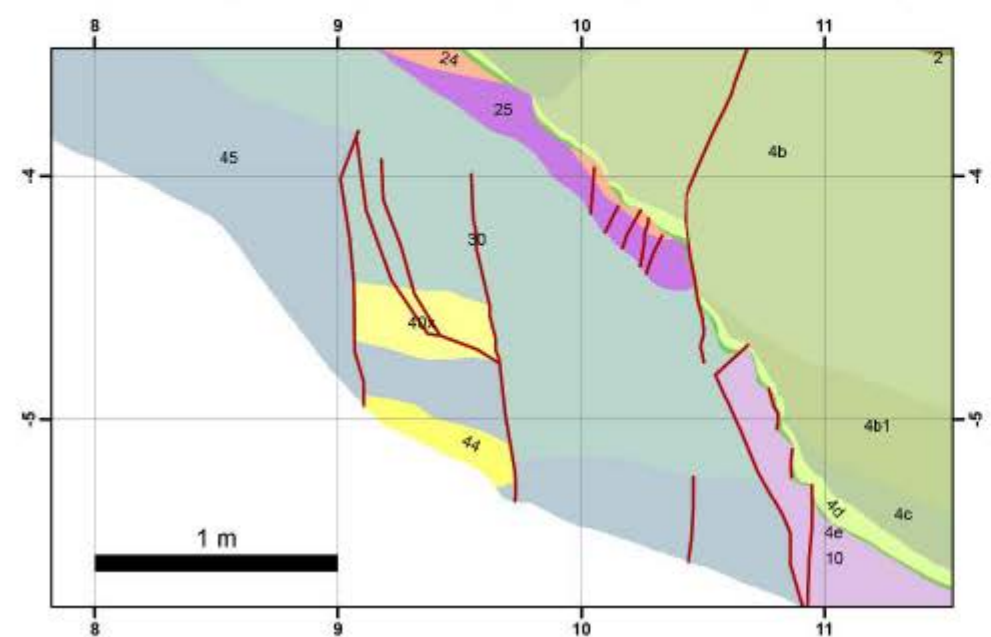
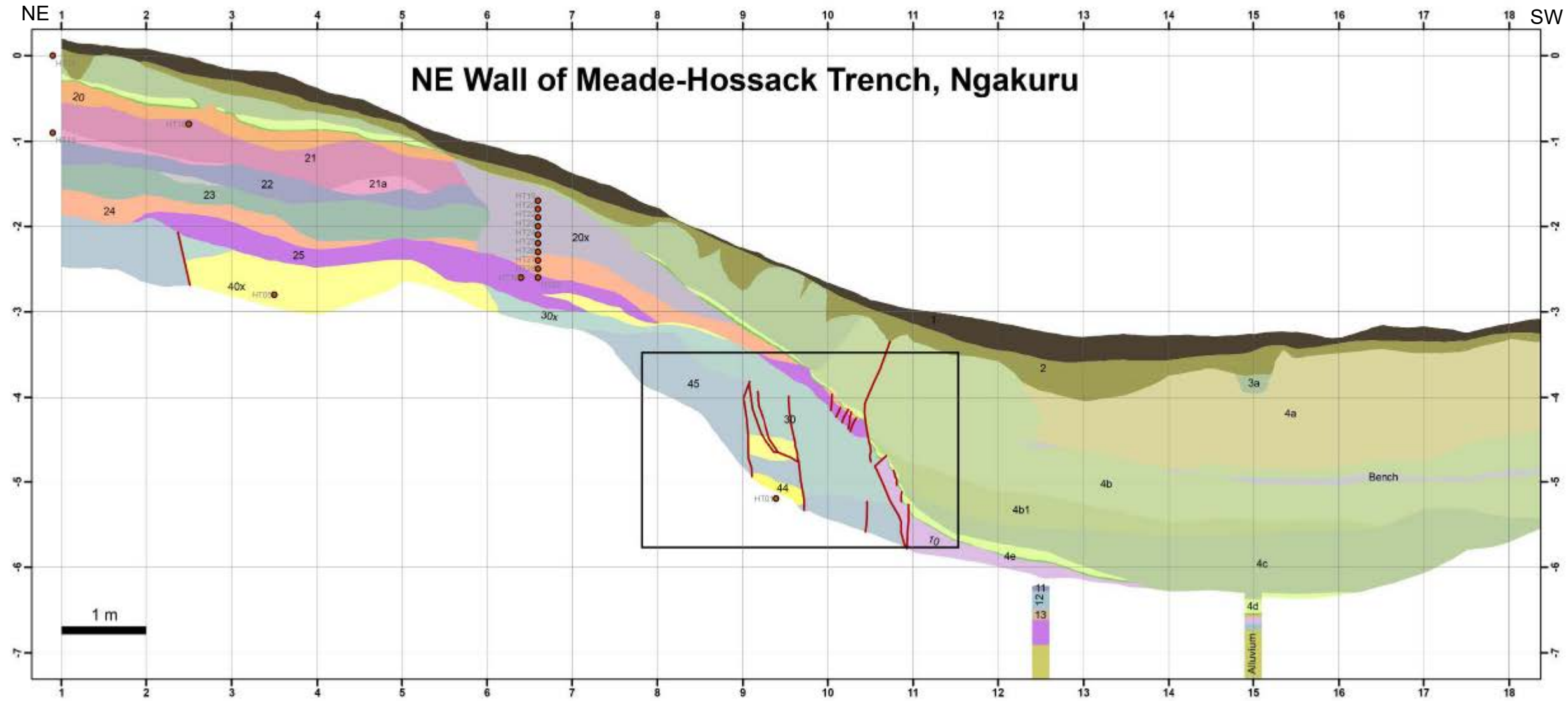
Trench logs for the southwest and northeast walls of the Meade trench (after Loame, 2016).

Note

The term "cream cakes" in the legend (unit 21a) refers to discontinuous layers or patches of ash of paler colour and appearance than the bed (or soil) that encloses them (e.g. Neall, 1972). They can have a characteristic cakey appearance (Healy 1964, p.10).

References

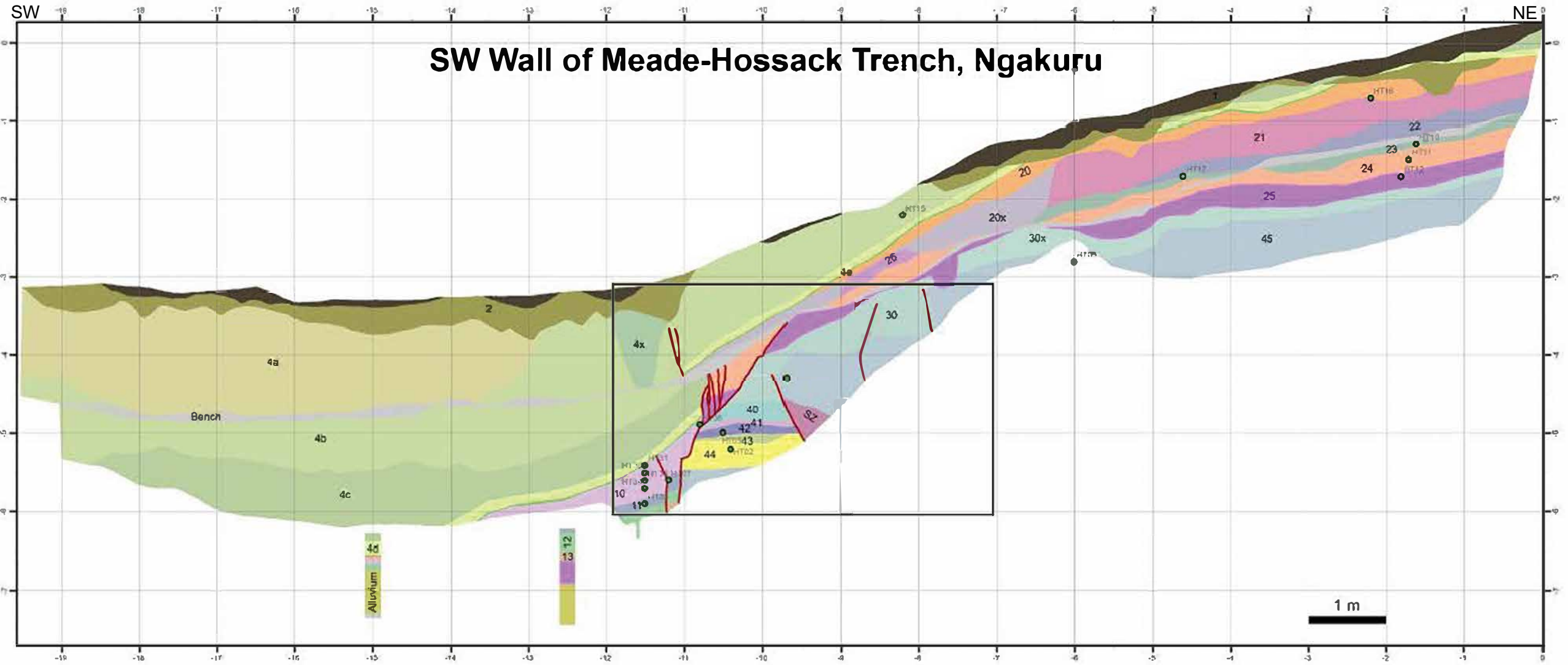
- Healy J. 1964. Stratigraphy and chronology of late Quaternary volcanic ash in Taupo, Rotorua, and Gisborne districts. Part I. Dating of younger volcanic eruptions of the Taupo region. *New Zealand Department of Scientific and Industrial Research Bulletin*, 73, 7-42.
- Loame R.C. 2016. Using a tephrostratigraphic framework to determine the past 40,000 yrs of rupture and paleohydrothermal activity on the east strand of the Whirinaki Fault, Ngakuru Graben, central Taupo Volcanic Zone. Unpublished MSc thesis, University of Waikato, Hamilton.
- Neall V.E. 1972. Tephrochronology and tephrostratigraphy of western Taranaki (N108–109), New Zealand. *New Zealand Journal of Geology and Geophysics*, 15, 507-557.



Legend

●	Sample Code				
—	Fault/fracture				
UnitCode					
■	1	Charcoal-rich topsoil	■	4e	Taupo Unit Y
■	2	Paleosol	■	10	Rotoma Tephra
■	3a	Scour infill	■	11	Rotoma Tephra
■	4a	Taupo Unit Y	■	12	Rotorua Tephra
■	4b	Taupo Unit Y	■	13	Rotorua Tephra
■	4b1	Taupo Unit Y	■	20	Ū[ɖ { æʌ } @æ
■	4c	Taupo Unit Y	■	20x	Ū[ɖ { æʌ } @æ
■	4d	Taupo Unit Y	■	21	Rotoma Tephra
			■	21a	"Cream cakes" in 21
			■	22	Rotoma Tephra
			■	23	Rotorua Tephra
			■	24	Rotorua Tephra
			■	25	Okareka Tephra
			■	30	Hinuera Formation
			■	30x	Hinuera Formation
			■	40x	Sinter
			■	44	Sinter
			■	45	Ohakuri Ignimbrite
			■	Bench	
			■	Alluvium	

SW Wall of Meade-Hossack Trench, Ngakuru



Legend

- Sample code
- Fault/fracture
- 1 Charcoal-rich topsoil
- 2 Paleosol
- 4a Taupo Unit Y
- 4b Taupo Unit Y
- 4c Taupo Unit Y
- 4d Taupo Unit Y
- 4e Taupo Unit Y
- 4x Taupo Unit Y
- 10 Rotoma Tephra
- 11 Rotoma Tephra
- 12 Rotorua Tephra
- 13 Rotorua Tephra
- 20 Rotoma Tephra
- 20x Rotoma Tephra
- 21 Rotoma Tephra
- 22 Rotoma Tephra
- 23 Rotorua Tephra
- 24 Rotorua Tephra
- 25 Okareka Tephra
- 26 Rotoma Tephra
- 30 Hinuera Formation
- 30x Hinuera Formation
- 40 Sinter
- 41 Sinter
- 42 Sinter
- 43 Sinter
- 44 Sinter
- 45 Ohakuri Ignimbrite
- Alluvium
- Bench
- SZ Shear zone

