

# A critical analysis of the place of culture in evaluation

BRIDGETTE MASTERS-AWATERE  
MAORI & PSYCHOLOGY RESEARCH UNIT  
SCHOOL OF PSYCHOLOGY  
UNIVERSITY OF WAIKATO



Culture: is a [pattern](#) of [responses](#) discovered, [developed](#), or invented during the [group's](#) history of [handling problems](#) which arise from interactions among its [members](#), and between them and their [environment](#). These responses are considered the correct way to perceive, feel, think, and [act](#), and are passed on to the new members through immersion and teaching. Culture determines what is acceptable or unacceptable, important or unimportant, [right](#) or wrong, workable or unworkable. It encompasses all learned and shared, explicit or tacit, [assumptions](#), [beliefs](#), [knowledge](#), [norms](#), and [values](#), as well as [attitudes](#), [behavior](#), dress, and language.

From:

<http://www.businessdictionary.com/definition/culture.html>

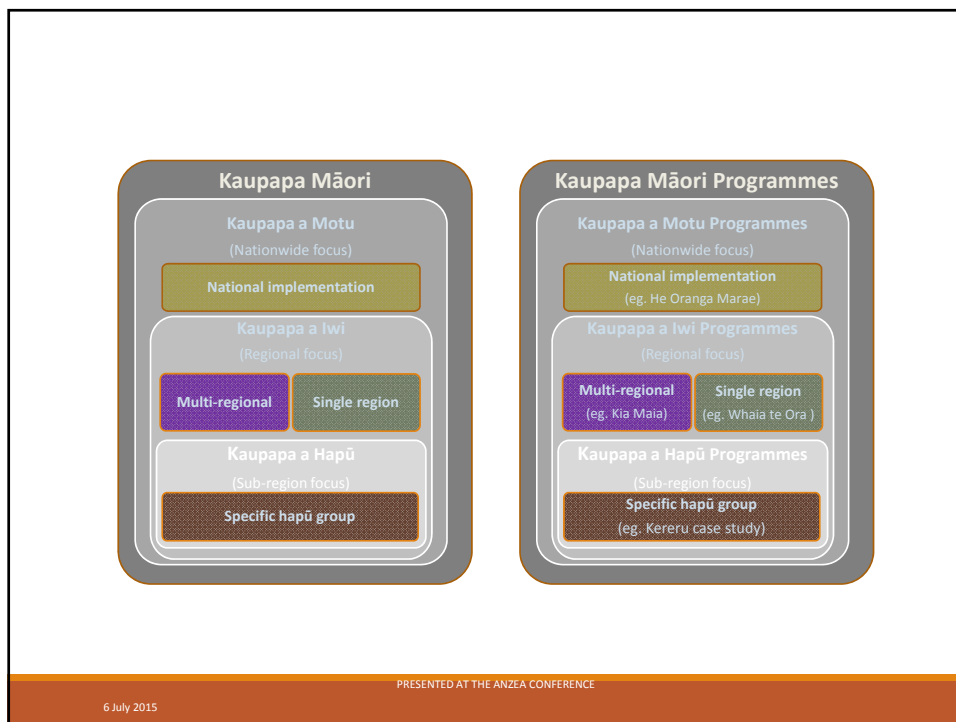
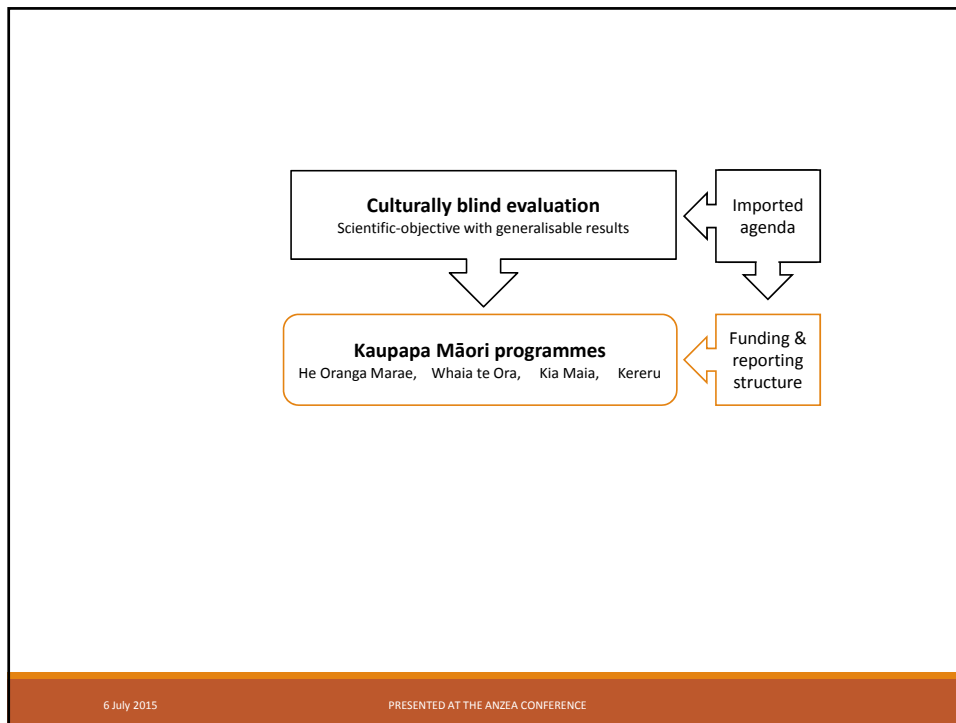
## About “cultural-readiness”...

“For Maori, indeed for all indigenous people the issue is the identification of the trauma, as Post Colonial Traumatic Stress Disorder in order to site the issue in its proper historical, political and economic context. Does your training and education address issues like the nature of the Maori...?”

Tariana Turia – speech to NZ Psychological Society Conference 2000, University of Waikato, Hamilton.

Activity	Date	Who I engaged with	Reason
Emails, telephone, face to face meetings	2004	Indigenous evaluators	Relationship building/ Discuss values
Hui, wananga, focus group, and individual Interviews	2004-05	Indigenous communities	Discuss values & recruit case study groups
	2005-08	Indigenous evaluators	Data collection
	2005-08	Indigenous communities	Case studies data collection
Desktop Analysis	2005-09	Evaluation Agencies*	International context
Feedback loop	2007-10	Case study groups	Give information of use and relevance back to sites
Advisory Work	2006-11	Government groups	Understand frameworks
Thesis write up, conference presentations	2012-2014	Scholars, and practitioners such as psychologists & evaluators	Disseminate my ideas and get feedback while writing my thesis

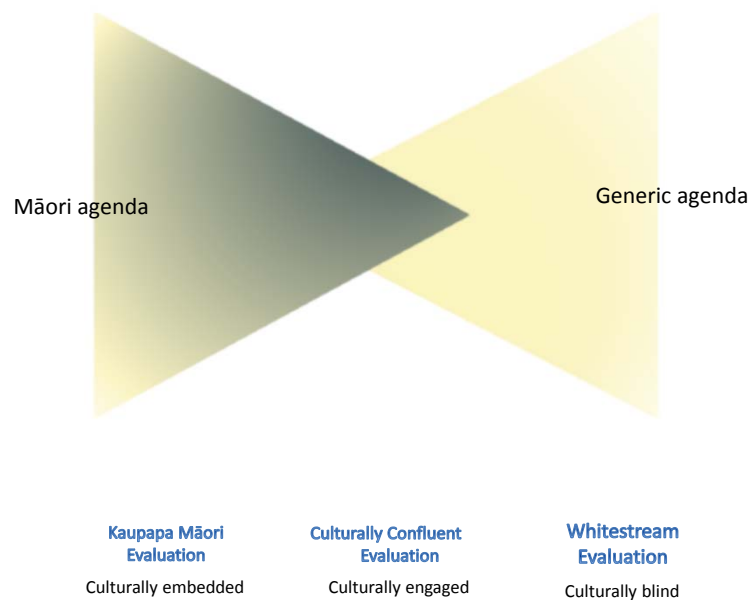
\* This activity was conducted through a webpage search and analysis



1. Was the evaluation theorised through a historical/materialist framework, which considered the context of colonialism and imperialism?
2. Was there a conscious consideration of diverse cultural positioning in relation to the evaluation commissioner/funder?
3. Did the evaluation commissioner support a capitalist/colonialist perspective that privileged their informational desires over those that could empower a disenfranchised group?
4. Did the commissioner promote individual choice and impartiality over social transformation?

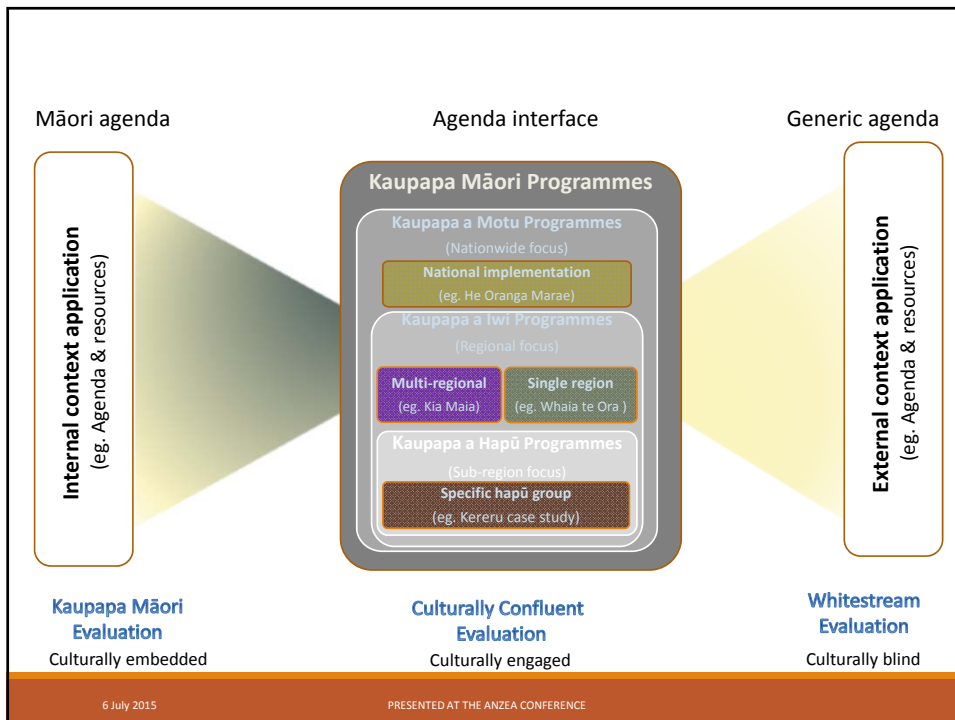
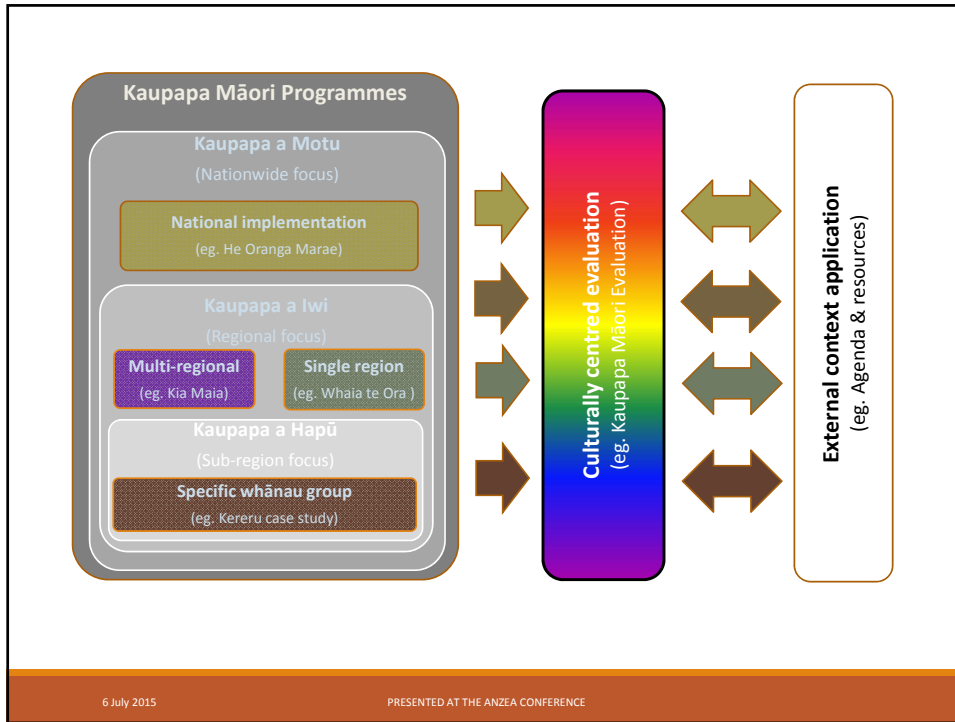
6 July 2015

PRESENTED AT THE ANZEA CONFERENCE



6 July 2015

PRESENTED AT THE ANZEA CONFERENCE



## Matauranga Māori and Evaluation interface



## Culture in Evaluation

