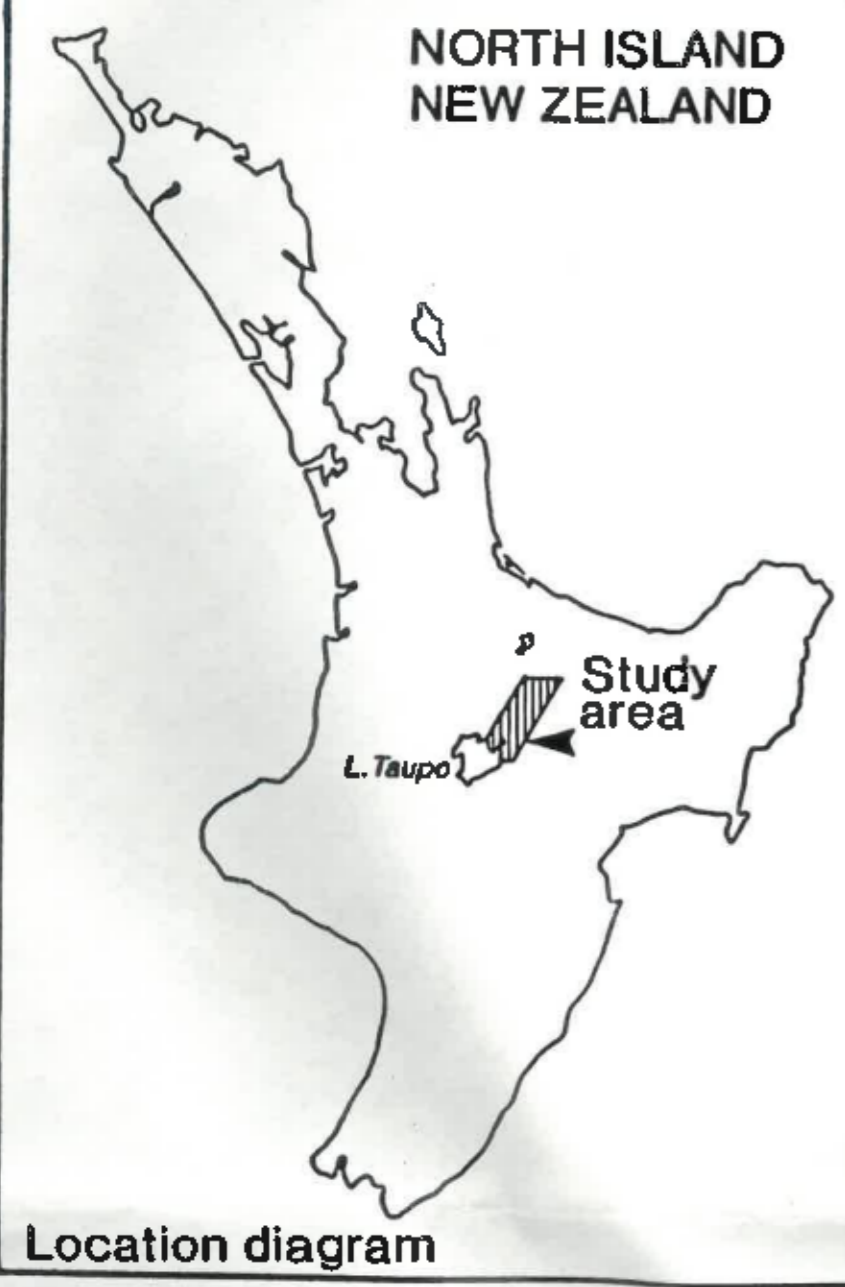


Map One: Soils of the Taupo - Reporoa Region

NORTH ISLAND
NEW ZEALAND



Location diagram

LEGEND

(adapted from Vucetich *et al.*, 1978, and Rijkse, 1986)

<i>From Taupo Pumice</i>		Waipahihi sand	Yp
Atiamuri silty sand and stony sand	Aig	Waipahihi gravelly sand	Ypg
Atiamuri sandy silt	Ai	Wairakei sand	Wa
Taupo silty sand	Tp	<i>Recent soils from alluvium</i>	
Taupo hill soils, silty sand	TpH	Reporoa sandy loam	31
Taupo silty sand-undulating phase	Tpd	Reporoa silt loam	31a
Taupo silty sand-upland phase	Tpe	Reporoa heavy silt loam	31b
Taupo sandy silt	Tpts	<i>Organic soils</i>	
Oruanui silty sand and sand, silty sand-undulating phase, sandy silt-undulating phase	Oi	Mokai peaty loam and shetlow peaty loam	Mok
Oruanui hill soils, silty sand and sandy silt	OiH	Tokianga peaty loam and peaty silt loam	33
Tauhara steeppland soils	TaS	Tokianga Reporoa silt complex	34
Pukerimu loamy sand	Px	<i>Soils of the lake shores</i>	
Motumoaa steeppland soils	MotS	Waitahanui sand	Yn
<i>From re-sorted Taupo Pumice</i>		Waitahanui gravelly sand	Yng
Whenuaroa sand	Wum	<i>From pumiceous wind blown sand</i>	
Whenuaroa stony silty sand	Wng	Rautawiri sand	Rt
Whenuaroa silty sand	Wn	<i>From Ngauruhoe Ash</i>	
Whenuaroa loamy sand	Wnls	Piopiotea peaty sandy loam	Pt
Hinemaiaia sand and stony sand	Hn		
Wharepaina silty sand and silt loam	Wh		

Note: Soils which are a combination of different soil groups are deliberately left uncoloured.

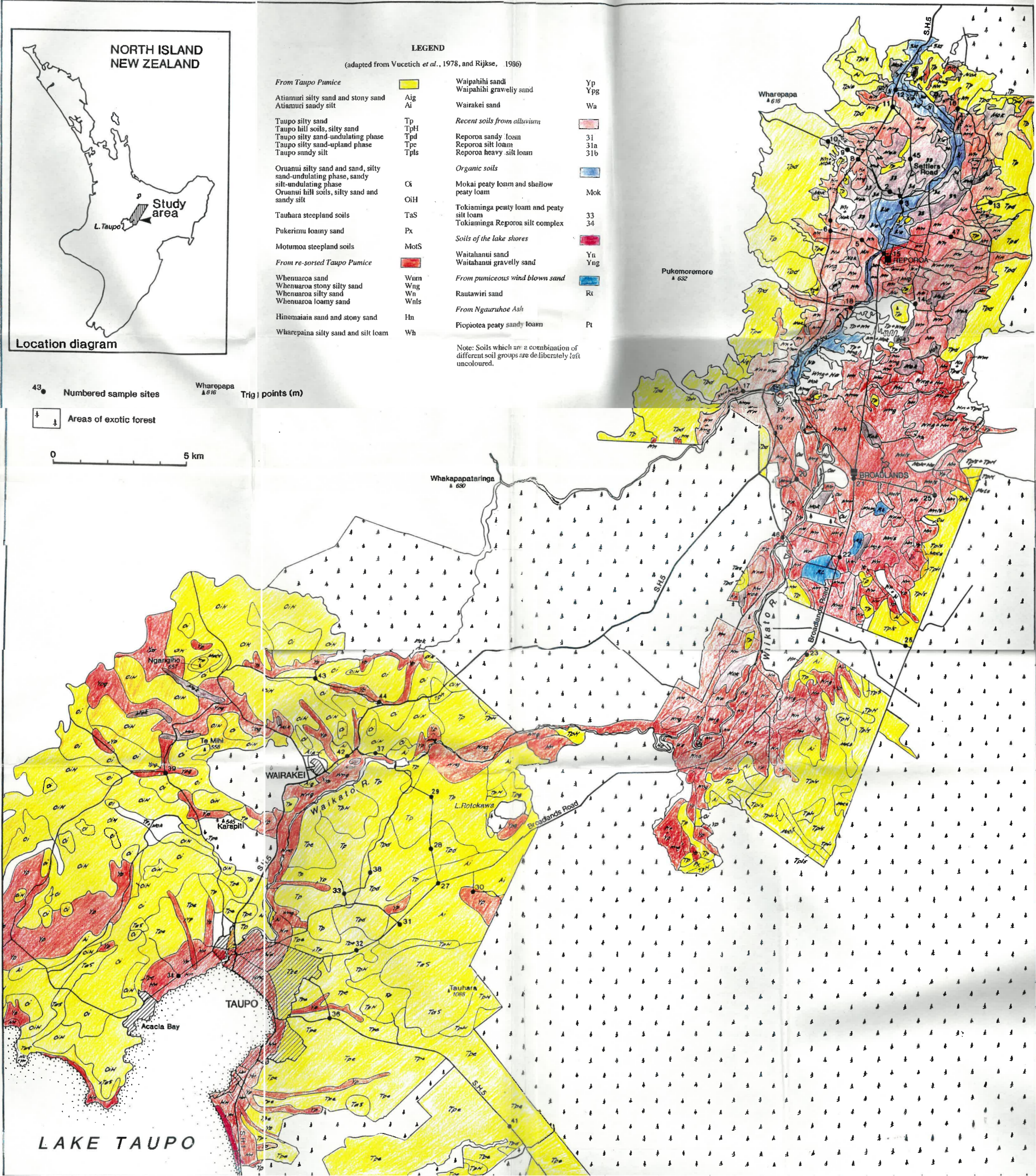
43 ● Numbered sample sites

Wharepapa
▲ 616

Trig. points (m)

⊥ Areas of exotic forest

0 5 km



LAKE TAUPO