



THE UNIVERSITY OF
WAIKATO
Te Whare Wānanga o Waikato

Research Commons

<https://researchcommons.waikato.ac.nz/>

Research Commons at the University of Waikato

Copyright Statement:

The digital copy of this thesis is protected by the Copyright Act 1994 (New Zealand).

The thesis may be consulted by you, provided you comply with the provisions of the Act and the following conditions of use:

- Any use you make of these documents or images must be for research or private study purposes only, and you may not make them available to any other person.
- Authors control the copyright of their thesis. You will recognise the author's right to be identified as the author of the thesis, and due acknowledgement will be made to the author where appropriate.
- You will obtain the author's permission before publishing any material from the thesis.

The Effects of Strength Asymmetry on Cricket Bowlers

A thesis

Submitted in fulfilment

of the requirements for the degree

Of

Master of Health, Sports, and Human Performance

At

The University of Waikato

by

Abhilasha Pantawane



THE UNIVERSITY OF
WAIKATO
Te Whare Wānanga o Waikato

2025

ABSTRACT

Introduction

Bowling is a complex motor skill that requires a coordinated interplay of muscle groups across the body. As bowlers repeatedly perform high-intensity actions, strength asymmetries differences in muscle performance between the dominant and non-dominant limbs can develop. Such asymmetries may affect both performance and injury risk (Gledhill & Terrington, 2005; Hulin et al., 2016). Although bilateral symmetry is often desired for optimal movement efficiency, it is not uncommon for athletes, particularly in unilateral sports or those with a clear dominant side, to exhibit significant differences in strength.

This research aims to examine the effects of strength asymmetry by comparing muscle strength across the dominant and non-dominant limbs in cricket bowlers. Specifically, measures of shoulder strength in three positions (SHLD-I, SHLD-Y, SHLD-T), gluteal strength (GLUT), core strength (OBLIQUE), and calf strength (CALF) were analyzed. By identifying which muscle groups show significant asymmetry, we hope to inform targeted training interventions that may improve performance and reduce injury risk.

Methodology

Bowlers who had their bilateral muscle strength measured made up the sample. To identify any potential asymmetries, measurements were made on both sides of the limb, which was determined to be the one used for bowling. Degrees of freedom were reported with sample sizes that varied slightly per muscle group ($n = 9$ for all muscle groups). Muscle strength was measured across six key muscle groups: SHLD-I, SHLD-Y, SHLD-T: These represent different orientations of shoulder strength. GLUT: Indicative of gluteal muscle strength. OBLIQUE:

Reflecting core strength via the oblique muscles. CALF: Representing the lower limb's strength, particularly relevant to force production in explosive movements.

Descriptive statistics (mean, standard deviation [SD], standard error [SE], and degrees of freedom) were obtained for each muscle group, and raw strength levels were noted. The difference in mean strength values between the dominant and non-dominant limbs was the main focus of the analysis. Paired T-tests were used for statistical comparisons, and p-values were supplied to determine significance. To evaluate the size of the differences, effect sizes were computed using Cohen's d.

The primary statistic was the mean difference between the non-dominant and dominant limbs, calculated as: $(\text{Non-Dominant Mean}) - (\text{Dominant Mean}) = \text{Difference}$

Positive differences favor the non-dominant limb, while negative differences show higher strength levels in the dominant limb. For both the standardized effect sizes (Cohen's d) and the raw mean differences, confidence intervals (at a 90% confidence level) were calculated. A p-value of less than 0.05 was chosen as the threshold for statistical significance.

Results

The investigation showed that the dominant limb performed better on a number of tests, indicating significant asymmetries in shoulder muscle strength. While certain shoulder muscle groups exhibited moderate but non-significant changes, others displayed considerable and statistically significant differences favoring the dominant side. Strength disparities in the lower limbs and core, however, were less noticeable. Although the non-dominant side's gluteal and oblique muscles were somewhat stronger, these differences were not statistically significant. The calf showed a slight but notable strength advantage in the dominant limb among the lower limb

muscles. Although the practical significance of these discrepancies seems to be small, the data generally indicate that upper limb strength asymmetries are more noticeable than those in the lower limb and core.

Discussion

The results of this study demonstrate that cricket bowlers have strength asymmetry, especially in the muscular areas that are directly used for bowling. Both SHLD-I and SHLD-T showed significant differences with substantial effect sizes, which is consistent with earlier studies on unilateral loading and adaptive hypertrophy in athletes who participate in one-sided activities. Despite showing a moderate effect, SHLD-Y's statistical significance was not attained, indicating that training adaptations varied depending on shoulder position. Conversely, there was very little asymmetry in core and gluteal strength, suggesting that bilateral conditioning may be advantageous. Even little asymmetries in the lower limb musculature may affect performance or injury risk, according to the CALF measure's considerable but tiny impact size. These findings underscore the importance of targeted strength training programs aimed at mitigating imbalances, particularly in the shoulder, to enhance performance and reduce injury susceptibility in cricket bowlers.

Conclusion

By measuring muscle strength in six important areas, this research investigated strength asymmetry in bowlers. It found notable asymmetries in shoulder (SHLD-I and SHLD-T) and calf strength, with the dominant limb performing better. Conversely, there were only slight and non-significant changes in the core and gluteal muscles, indicating that unilateral loading had less of an effect on these areas. These results highlight the necessity of balanced training methods to

lessen asymmetry, improve performance, and lower the risk of injury among bowlers. To better examine the long-term impacts of strength asymmetry on athletic performance and injury risk.

INDEX

ABSTRACT	3
ACKNOWLEDGEMENT	9
BACKGROUND	10
1.0 LITERATURE REVIEW.....	12
1.1 BACKGROUND OF CRICKET	12
1.2 INJURIES IN CRICKET	13
1.2.1 Upper-limb injuries:	13
1.2.2 Lower limb Injuries	16
1.3 IMPORTANCE OF TESTING AND MONITORING MUSCLE AND MUSCLE IMBALANCES	18
1.3.1 Importance of Regular Testing and Monitoring	18
1.3.2 Impact on Performance	18
1.3.3 Risk of Injury.....	19
1.4 INJURY RATES	19
1.5 IMPORTANCE OF STRENGTH ASYMMETRY TESTS IN BOWLERS	20
2.0 ABSTRACT.....	22
3.0 INTRODUCTION	23
3.1 ENHANCES PERFORMANCE AND BOWLING CONSISTENCY	23
3.2 REDUCES THE RISK OF INJURIES	24
3.3 IMPROVES CORE STABILITY AND ENERGY TRANSFER	24
3.4 AIDS IN FASTER RECOVERY AND LONGEVITY	25
3.5 ENHANCES AGILITY AND FIELDING ABILITY	25
3.6 SIGNIFICANCE OF STRENGTH TESTING IN CRICKET BOWLING	27
3.7 IMPORTANCE OF KEY MUSCLE GROUPS IN BOWLING	28
3.8 RESEARCH AIM	30
4.0 METHODOLOGY.....	32
4.1 ETHICAL CONSIDERATIONS.....	32
4.2 PARTICIPANTS	32
4.3 RESEARCH DESIGN	32
4.4 EQUIPMENT	33
4.4.1 FORCE PLATE.....	33
4.4.2 HAND-HELD DYNAMOMETER.....	33
4.5 TESTING DAY PROTOCOL.....	34
4.6 GENERAL INSTRUCTIONS.....	35
4.6 STRENGTH TESTS DESCRIPTION	35
4.7.1 IYT Test on Force Plate (Shoulder).....	35
4.7.2 Side Plank using MMT (Oblique).....	35
4.7.3 Donkey kick with MMT (Gluteus)	36
4.7.4 Calf Raises with Calf Raiser App	36
4.8 DATA COLLECTION AND ANALYSIS	36
4.9 QUALITY CONTROL MEASURES	37

5.0 RESULTS.....	38
5.1 MEAN STRENGTH	38
5.2 ISOMETRIC STRENGTH VALUES.....	39
5.3 MUSCLE IMBALANCES	40
5.4 P-VALUES FOR MUSCLE IMBALANCES COMPARISONS.....	42
5.5 EFFECT SIZE DIFFERENCES	43
5.6 DIFFERENCES OF DOMINANT AND NON-DOMINANT SIDES	43
5.7 RATIO OF DOMINANT AND NON-DOMINANT SIDES	44
5.8 OVERALL OBSERVATIONS:	46
6.0 DISCUSSION.....	47
6.1 MUSCLE IMBALANCES IN BOWLERS.....	47
6.2 DOMINANT VS. NON-DOMINANT SIDE STRENGTH	48
6.3 IMPLICATIONS FOR INJURY RISKS	49
6.4 TRAINING AND REHABILITATION RECOMMENDATIONS	50
6.5 STATISTICAL ANALYSIS OF MUSCLE IMBALANCES	52
6.6 NOVELTY OF THIS STUDY:.....	53
6.6.1 <i>What we knew then</i>	53
6.6.2 WHAT WE KNOW NOW	54
7.0 CONCLUSION	56
8.0 LIMITATIONS AND FUTURE DIRECTIONS.....	59
9.0 REFERENCES	62

ACKNOWLEDGEMENT

I want to thank the following individuals for helping me with my thesis and for their guidance.

First of all, I would want to thank Marty Beaven, my main supervisor. We appreciate your perseverance, inspiration, amazing expertise, and general help in finishing this thesis.

This study would not have been possible without the participation of Northern District Cricket players. Additionally, I would like to thank Cory Miles for his assistance in organizing the test and its infrastructure and coordinating with the team. We appreciate your dedication, time, and work.

Lastly, I would like to express my gratitude to my family. I appreciate you letting me follow my dreams and for your patience and encouragement.

BACKGROUND

Strength asymmetry is a well-known occurrence in sports like cricket bowling that require repetitive unilateral motions. The dominant limb of bowlers is subjected to high-intensity, repetitive loading, which may cause muscle imbalances that impair performance and increase the risk of injury.(Maloney, 2019) Rapid acceleration, deceleration, and rotational forces are among the biomechanical demands of fast bowling that put a great deal of strain on muscle groups, especially the shoulders and lower limbs.(Portus et al., 2004) Strength disparities between the dominant and non-dominant limbs may therefore lead to decreased performance, biomechanical inefficiencies, and a higher risk of overuse injuries. (Fox et al., 2023)

Prior research on unilateral adaptations in cricket players has shown that recurrent, asymmetrical stress is linked to structural and neuromuscular alterations. The degree of strength asymmetry in bowlers across several muscle groups and its direct effects on performance and injury prevention, however, have not been well studied. Knowing these asymmetries is essential for developing training plans that maximize muscular balance and injury resilience given the physical demands of bowling. (Guan et al., 2022) By measuring strength asymmetry in six important muscle areas in cricket bowlers and analyzing its possible effects on performance and injury risk, this study seeks to close this gap.

While this study provides valuable insights into strength asymmetry in bowlers, several limitations must be acknowledged. First, the results may not be as applicable to larger populations of crickets due to the small sample size. A larger cohort should be used in future studies to improve external validity and statistical power. Second, isometric strength measurements were the study's focus, which might not adequately represent the dynamic muscle demands of bowling. A more thorough knowledge of the consequences of asymmetry may be

possible by incorporating dynamic strength evaluations and movement analysis. Furthermore, skill levels and individual training histories were not considered, which would have influenced the differences observed in strength. Lastly, because this study was cross-sectional, it only offered a momentary view of strength asymmetry. The causal links between asymmetry, performance, and injury risk may be more clearly established by longitudinal studies that monitor changes in strength over the course of a season or career.

By measuring the strength of the muscles in important areas - the shoulders, core, gluteal, and calves, this study examines strength asymmetry in bowlers (pacers and spinners). Measuring the level of asymmetry and assessing its effects on performance and injury risk are the main goals. To ensure that the results are applicable to high-performance athletes, the study focuses on bowlers competing at the competitive level. Although the study focuses on cricket, the knowledge gathered could be useful for other unilateral loading sports including baseball, tennis, and javelin shooting. This study intends to provide information for training treatments that support muscular balance and injury prevention techniques in cricket and related sports by detecting patterns of asymmetry.

1.0 LITERATURE REVIEW

1.1 Background of cricket

Cricket is a bat-and-ball game that originated in England, with its earliest definite reference dating back to the late 16th century. The game is believed to have begun as a children's pastime in the southeastern counties of England during the medieval period. The first documented mention of cricket comes from a 1598 court case in Guildford, Surrey, where a witness testified to playing "creckett" on common land around 1550. ("Cricket," 2025)

The sport gained popularity among adults in the 17th century, leading to more organized forms of play. In 1744, the first known codification of the Laws of Cricket was established, standardizing aspects such as the dimensions of the pitch and the equipment used. The Marylebone Cricket Club (MCC), founded in 1787, became the custodian of these laws and has maintained that role to this day. ("History of Cricket," 2025)

Cricket expanded beyond England through British colonial influence, taking root in countries like India, Australia, the West Indies, and South Africa. The first recorded international match occurred in 1844 between Canada and the United States in Toronto. Test cricket, the game's longest format, began in 1877 with a match between England and Australia at the Melbourne Cricket Ground, marking the inception of one of the most celebrated rivalries in the sport, known as The Ashes. The 20th century saw significant developments, including the introduction of limited-overs cricket in the 1960s, which led to the inaugural Cricket World Cup in 1975. This format has since gained immense popularity, complementing the traditional Test matches. Today, cricket is governed internationally by the International Cricket Council (ICC), overseeing

various formats and tournaments, and continues to be a major sport in many countries around the world. (“History of Cricket,” 2025)

1.2 Injuries in Cricket

Cricket is a popular global sport that requires a combination of physical fitness, skill, and strategy. Although a noncontact sport, overuse and impact injuries are common since players engage in a wide range of physical activities, including running, throwing, batting, bowling, catching, and diving. Significant or match time-loss injuries are defined as those that either prevent a player from being fully available for selection in a major match, or during a major match, cause a player to be unable to bat, bowl, or keep wicket when required by either the rules or the team’s captain. This review describes the various region-wise injuries sustained in cricket along with their epidemiology, biomechanics, treatment, and prevention. (Pardiwala et al., 2017)

Because their bowling motions are high impact, repetitive, and asymmetrical, cricket bowlers, especially fast bowlers - are extremely vulnerable to upper- and lower-limb injuries. Bowling’s kinetic chain puts a lot of strain on several joints and muscle groups, which can cause injuries to the upper and lower limbs.

1.2.1 Upper-limb injuries:

Bowlers are susceptible to a range of upper-limb injuries due to the repetitive and high-intensity nature of their actions. The shoulder, elbow, and wrist are critical in generating speed, control, and accuracy during bowling, but the demands placed on these joints can lead to overuse injuries and acute trauma.

Shoulder:

The frequency of shoulder injuries among bowlers, especially fast bowlers, has been brought to light by recent studies. In 2023, a study found that 38% of fast bowlers had shoulder impingement syndrome, with semi-front-on bowlers being more prone to the condition. This emphasizes how crucial appropriate technique and conditioning are in reducing the chance of damage. ((PDF) *Prevalence of Shoulder Impingement Syndrome and Its Association with Bowling Style among Fast Bowlers*, n.d.)

Cricket fast bowlers are particularly susceptible to **shoulder impingement syndrome (SIS)** due to the repetitive overhead motions inherent in their sport. A cross-sectional study conducted between November 2023 and June 2024 involving 116 fast bowlers found that **38%** of participants suffered from SIS. The research highlighted a significant association between bowling style and the prevalence of SIS, with semi-front-on bowlers exhibiting a higher incidence compared to front-on, side-on, or mixed-action bowlers. Specifically, over twenty-two cases of impingement were linked to the semi-front-on style, as assessed by the Constant-Morley Score, a tool used to evaluate shoulder impairment. The study's chi-square test confirmed a statistically significant relationship between shoulder impingement and bowling style ($p = 0.02$). These findings underscore the importance of proper technique, strength training, and adequate rest in preventing shoulder injuries among fast bowlers. Ongoing research is essential to develop targeted prevention and rehabilitation programs tailored to the unique demands of different bowling styles. (Olivier et al., 2020)

SLAP tears involve injury to the superior part of the glenoid labrum, where the biceps tendon attaches. These tears are common in athletes engaged in repetitive overhead activities, such as cricket bowlers. Symptoms often include deep shoulder pain, a popping or clicking sensation,

and weakness during overhead motions. The repetitive stress from bowling can cause the labrum to fray or tear over time.

Bowlers are susceptible to various upper-limb injuries due to the repetitive and high-intensity nature of their actions. The elbow joint often endures significant stress, leading to conditions such as medial epicondylitis, commonly known as golfer's elbow. This condition arises from the overuse of forearm muscles, resulting in inflammation of the medial epicondyle and causing inner elbow pain. It frequently occurs at the start of the season due to a sudden increase in workload or at the end of the season due to fatigue. Throwing technique can often be a key factor, so working with a coach may be helpful. Another prevalent injury is lateral epicondylitis, or tennis elbow, which involves inflammation of the tendons on the outer elbow. This condition is often caused by improper batting biomechanics or inappropriate equipment, such as a heavy bat. Management in the early stages includes physiotherapy and rehabilitation to address strength imbalances in the forearm and correct biomechanical issues in the elbow. (Pardiwala et al., 2017)

Oblique:

Fast bowlers frequently get side strains involving oblique muscles in addition to shoulder issues. Contralateral internal oblique strains are common among recreational fast bowlers, especially among younger athletes, according to a 2023 study. These ailments are frequently brought on by bowling's intense trunk rotation, which highlights the necessity of focused core strengthening and flexibility exercises to avoid these strains. (“(PDF) Prevalence of Contralateral Internal Oblique Strain in Recreational Fast Bowlers,” 2024)

Fast bowlers are prone to **side strains**, which are acute tears of the internal oblique muscle on the non-bowling arm side. This injury results from the forceful contraction of the oblique muscles

during the bowling action, leading to sharp pain in the lateral trunk, especially during twisting movements. Studies have highlighted that side strains are among the most frequent injuries in cricket fast bowlers, often requiring extended rehabilitation periods. (Pardiwala et al., 2017)

Another concern is **intercostal muscle strains**, involving the muscles between the ribs that assist in respiration and torso rotation. Sudden or excessive twisting during bowling can cause microtears in these muscles, leading to pain during deep breathing, coughing, or bowling. Research indicates that intercostal muscle injuries are a notable issue in fast bowlers, contributing to significant time away from play. (Pardiwala et al., 2017)

1.2.2 Lower limb Injuries

Gluteus & Hip:

Because of the high demands of their bowling motions, cricket fast bowlers are prone to injuries to the gluteal muscles, especially the gluteus Medius. During the delivery stride, the gluteus Medius is essential for pelvic stability. Strains in this muscle from excessive stress during the landing phase might cause outer hip pain and make lateral motions difficult. The gluteus Medius is crucial for preserving pelvic stability while bowling, as evidenced by a study that looked at the lumbopelvic muscle activation patterns in teenage fast bowlers and discovered that it was significantly activated during ipsilateral foot contact phases. (Forrest et al., 2016)

Piriformis syndrome is another issue. In this condition, the sciatic nerve is compressed by the piriformis muscle, resulting in severe buttock discomfort and possibly tingling down the leg. Prolonged bowling sessions without proper stretching can result in this condition. Piriformis syndrome is common in athletes that do repetitive rotating motions, although there are few

research specifically examining it in cricket bowlers. Manual therapy and focused exercises to relieve nerve compression and muscle tightness are part of effective care.

Preventative strategies for these injuries involve strengthening and conditioning programs focusing on the gluteal and piriformis muscles. Incorporating exercises that enhance muscle endurance and flexibility can mitigate the risk of strains and nerve compression. Additionally, proper warm-up routines and technique adjustments are essential to reduce undue stress on these muscle groups during bowling activities.

Calves:

Because of the high intensity demands of their position, fast bowlers are especially prone to calf muscle injuries, particularly strains of the gastrocnemius and soleus muscles. Overuse injuries can result from fast bowling's explosive movements and repetitive sprinting.

Pace bowlers are more susceptible to calf injuries if they have a history of lumbar stress fractures. According to (Orchard, Farhart, et al., 2010), bowlers who have previously suffered lumbar stress fractures are four times more likely to suffer calf strains, maybe as a result of changed biomechanics and compensating mechanisms. Achilles tendinopathy, which is another common injury, is defined by the Achilles tendon degenerating because of excessive use. Fast bowlers are especially at risk because the repetitive strain of bowling motions can cause tendon pain and stiffness. Rest, physical therapy, and targeted exercises meant to increase flexibility and strengthen the tendon are common management techniques.

While specific recent studies focusing on gluteal and calf muscle injuries in bowlers are limited, the high physical demands of fast bowling suggest that these muscle groups are also at risk.

Comprehensive training and injury prevention programs addressing all relevant muscle groups are essential to reduce the overall injury burden among bowlers.

1.3 Importance of testing and monitoring muscle and muscle imbalances

Bowlers in cricket need to perform high-intensity, repeated movements that put a lot of strain on their musculoskeletal system. Asymmetry in muscle strength is the state in which one side of the body is stronger or more developed than the other. Bowlers are especially affected by this condition since they typically utilize one arm when bowling, which may result in imbalances in their muscular power and coordination.

1.3.1 Importance of Regular Testing and Monitoring

Regular testing and monitoring of muscle imbalances are crucial for cricket bowlers to identify strength asymmetries that may predispose them to injuries and hinder performance. Isokinetic dynamometry is a widely recognized method for assessing muscle strength and detecting imbalances across different muscle groups. By quantifying the strength of specific muscles, this tool enables the identification of significant asymmetries, allowing coaches and medical staff to develop tailored training programs aimed at correcting these imbalances. Such proactive measures are essential in preventing injuries and ensuring that bowlers maintain optimal physical condition. (Bagordo et al., 2020)

1.3.2 Impact on Performance

Research indicates that muscle imbalances can adversely affect a bowler's performance. A study published in the *Journal of Science and Medicine in Sport* found that symmetry, rather than asymmetry, of abdominal muscle morphology is associated with low back pain in cricket fast

bowlers. This suggests that imbalances in core musculature may contribute to discomfort and potentially impair performance. (*Bilateral Difference between Lower Limbs in Children Practicing Laterally Dominant vs. Non-laterally Dominant Sports - Guan - 2021 - European Journal of Sport Science - Wiley Online Library, n.d.*)

1.3.3 Risk of Injury

Asymmetry in muscle strength greatly increases an athlete's risk of injury, especially for bowlers. According to a comprehensive review that was published in the British Journal of Sports Medicine, athletes who have noticeable muscle imbalances are more likely to have overuse injuries, sprains, and strains. Because of their frequent motions and unequal muscular growth, bowlers in cricket are particularly prone to elbow and shoulder problems. For example, rotator cuff tears or shoulder impingement can arise from abnormalities in the shoulder muscles that put undue strain on joints.

1.4 Injury rates

Because of the intense physical demands of their position, fast bowlers are especially prone to injury. According to studies, 21% of fast bowlers are typically injured and not available for selection at any one moment. (Orchard, James, et al., 2010) It has been reported that fast bowlers sustain six injuries every 100 days, with an 8% occurrence rate. (*INJURY TYPES AND RATES IN AN INTERNATIONAL CRICKET TEAM: APPLICATION OF SUBSEQUENT INJURY CATEGORISATION* / *British Journal of Sports Medicine, n.d.*) The most frequent injuries are lumbar stress fractures and hamstring strains, the latter of which is especially serious and frequently ends a young fast bowler's season. (Pardiwala et al., 2017)

Muscle imbalances must be monitored and treated in order to reduce the chance of injury.

Bowlers may be at risk for overuse injuries due to imbalances, particularly between the internal and external rotator muscles of the shoulder. (“(PDF) Shoulder Rotator Muscle Imbalance in Collegiate Cricket Bowlers,” 2024)

Frequent evaluation of balance and muscle strength makes it possible to identify these abnormalities early on and apply focused therapies, such as eccentric strengthening exercises. It has been demonstrated that these workouts lessen injuries to the hamstrings, hip adductors, and posterior shoulder muscles. (M. R. L. Forrest et al., 2018) Cricket teams can improve player performance and lower the risk of injuries among fast bowlers by proactively controlling muscle imbalances.

Frequent evaluation of muscle balance makes it possible to spot these asymmetries and apply focused treatments to address abnormalities. This proactive approach improves overall performance by lowering the risk of injury and promoting optimal biomechanical function.

1.5 Importance of Strength Asymmetry Tests in Bowlers

Assessing strength asymmetry in bowlers is crucial because cricket is a highly repetitive and unilateral sport where athletes predominantly use one side of their body more than the other. This can lead to imbalances that affect performance, efficiency, and risk of injury. By analyzing the strength differences between the dominant and non-dominant limbs, we can determine the extent of these asymmetries and develop targeted training interventions to minimize negative impacts.

Given the very repetitive and unilateral character of cricket, where players primarily use one side of their body more than the other, evaluating strength asymmetry in bowlers is essential.

Performance, injury risk, and long-term athletic development can all be greatly impacted by this imbalance. Whether it's the lead leg used for landing and force production or the bowling arm, bowlers mainly rely on one side of their bodies. Muscular asymmetries brought on by prolonged use might impair performance by decreasing force transfer efficiency and biomechanics, which in turn affects bowling speed, accuracy, and endurance (Hughes et al., 2020).

Additionally, especially in high-impact sports like fast bowling, strength imbalances are associated with a higher risk of stress fractures, overuse injuries, and muscular strains (Frost et al., 2013). A bowler's capacity to sustain high levels of play over time may be hampered by persistent asymmetries, which can also lead to long-term performance problems (Bailey et al., 2015). By being aware of these asymmetries, coaches and sports scientists may create training plans that minimize these differences, enhance performance, and guard against injuries.

By systematically comparing the dominant and non-dominant limb strength, coaches and sports scientists can create personalized conditioning programs aimed at reducing these discrepancies, thereby improving efficiency and lowering injury risk.

2.0 ABSTRACT

Introduction: This study examines the impact of muscle imbalances on performance and injury risk in elite male cricket bowlers. Strength asymmetry, particularly between the dominant and non-dominant sides, can affect biomechanics, efficiency, and susceptibility to injuries.

Methodology: A cross-sectional study was conducted on nine elite male bowlers (pacers and spinners), assessing key muscle groups (shoulders, obliques, glutes, and calves) using isometric strength tests, force plates, and handheld dynamometry. Statistical analysis was performed to identify significant asymmetries. **Results:** Results showed that spinners exhibited greater upper-body imbalances, especially in shoulder strength, while pacers demonstrated more lower-body asymmetries, particularly in the calves. Although statistical comparisons between pacers and spinners were not significant, dominant-side strength disparities in the shoulder and calf muscles were found to be significant ($p < 0.05$). **Discussion:** These imbalances align with the biomechanical demands of each bowling style. Spinners' reliance on one side increases their risk of shoulder injuries, while pacers face greater risks of calf and ankle injuries due to impact forces during landing. Corrective strength training, unilateral exercises, and neuromuscular conditioning can help mitigate these risks. **Conclusion:** The study highlights the importance of maintaining strength symmetry to enhance performance, reduce injury risk, and prolong athletic careers. Future research should explore larger sample sizes, motion analysis, and long-term interventions to address the strength imbalances in bowlers.

Keywords: Bowling, strength asymmetry, muscle imbalances, biomechanics, injury risk, sports performance, isometric strength testing, elite athletes.

3.0 INTRODUCTION

Cricket bowling is a complex athletic skill that demands not only technical proficiency but also significant physical attributes. The biomechanics of bowling involves intricate movements that require the coordinated action of multiple muscle groups. Key factors such as muscular strength, endurance, and balance play critical roles in a bowler's effectiveness on the field. For instance, fast bowlers rely heavily on explosive strength and speed to deliver the ball at high velocities, while spin bowlers depend more on finesse and control to impart spin. The interplay between these physical attributes can significantly influence performance outcomes, making it essential for bowlers to develop a well-rounded physical profile.

One of the most pertinent issues in bowling is strength asymmetry, the disparity in strength between corresponding muscle groups on either side of the body. This asymmetry can lead to imbalances that may affect a bowler's technique and overall performance. For example, if a bowler has significantly stronger muscles on the dominant shoulder compared to the non-dominant shoulder, this imbalance can result in altered biomechanics during delivery. Such changes may not only reduce efficiency but also increase the risk of injury due to overcompensation by certain muscle groups. Understanding how these imbalances manifest in specific muscle groups like the shoulders, obliques, glutes, and calves—is crucial for optimizing training regimens and minimizing injury risks.

3.1 Enhances Performance and Bowling Consistency

Bowling requires a synchronized contribution from multiple muscle groups. If one side of the body is significantly weaker than the other, it can lead to inconsistencies in delivery mechanics, affecting bowling speed, accuracy, and control. Strength symmetry allows bowlers to generate

even force throughout their action, improving stability and ensuring repeatable, efficient bowling performances. In research study, (Bartlett et al., 1996) have shown that strength imbalances can negatively impact movement efficiency and biomechanics, leading to variations in ball release angles and speed. Maintaining equal strength ensures a more stable and repeatable bowling action, crucial for elite-level competition.

3.2 Reduces the Risk of Injuries

Bowlers are prone to numerous muscular injuries due to the immense stress placed on their muscles, joints, and ligaments, particularly in the shoulders, lower back, and legs. Strength imbalances can lead to one side of the body compensating for the weaker side, resulting in excessive strain and a higher risk of overuse injuries. These include shoulder impingements and rotator cuff injuries, lumbar stress fractures from excessive spinal torsion, and hip and knee injuries caused by uneven weight distribution during landing. Stretch (2003) Research by (Gamage et al., 2017) highlights that asymmetrical muscle function is a key predictor of injuries in fast bowlers. Regular monitoring of strength asymmetry is crucial in preventing such injuries, as equalizing strength between the dominant and non-dominant sides helps distribute workload evenly, reducing excessive strain and minimizing the risk of chronic injuries. Equalizing strength between the dominant and non-dominant sides helps to distribute workload evenly, preventing excessive strain on any single muscle group and reducing the likelihood of chronic injuries.

3.3 Improves Core Stability and Energy Transfer

Bowling involves a kinetic chain movement, where force is generated from the ground up, passing through the legs, core, and upper body before reaching the ball. If there is a strength

imbalance, it disrupts the smooth transfer of energy, leading to a loss of power and inefficient force transmission.

For instance, obliques play a critical role in rotational force during bowling. If one side is weaker, the bowler may compensate by over-rotating or under-rotating, leading to decreased bowling velocity and increased spinal stress. Research suggests that core muscle imbalances are linked to decreased performance and higher injury rates in cricketers (Hibbs et al., 2008).

Strength balance ensures efficient energy transfer, maximizing bowling effectiveness.

3.4 Aids in Faster Recovery and Longevity

Bowlers with significant strength asymmetries often experience muscle fatigue more quickly because the stronger side overcompensates for the weaker side. This imbalance leads to greater stress accumulation in certain muscle groups, increasing the time required for recovery.

Balanced muscle strength promotes even workload distribution, reducing localized fatigue and enhancing overall endurance. This is particularly important in longer formats of cricket, where bowlers must maintain peak performance over multiple spells. Strength symmetry contributes to prolonged career longevity by reducing wear and tear on the body.

3.5 Enhances Agility and Fielding Ability

While bowling is the primary focus, cricket requires bowlers to be agile fielders as well.

Explosive movements such as sprinting, jumping, and sudden directional changes require

balanced lower-body strength. A bowler with one leg stronger than the other may struggle with quick movements, affecting their ability to react to plays in the field.

Studies indicate that lower limb asymmetry can negatively impact agility and sprint performance (Newton et al., 2006). Maintaining equal strength in both legs ensures better balance, coordination, and movement efficiency, enhancing overall athletic performance on the field.

For cricket bowlers, maintaining equal strength between the dominant and non-dominant sides is crucial for performance, injury prevention, energy efficiency, and career longevity. Strength imbalances can compromise bowling mechanics, increase injury risk, and lead to inefficient energy transfer. By implementing targeted strength training and isometric assessments, bowlers can achieve muscular symmetry, ensuring a more stable, powerful, and injury-resistant bowling action.

In addition to performance implications, addressing strength asymmetry is vital for long-term athlete health. Injuries related to overuse or biomechanical inefficiencies are common among cricketers, particularly bowlers who subject their bodies to repetitive high-stress actions. By focusing on balanced strength development across both sides of the body, coaches and trainers can help bowlers enhance their performance while reducing susceptibility to injuries. This holistic approach not only improves individual capabilities but also contributes positively to team dynamics by ensuring that players remain fit and available for competition throughout the season.

3.6 Significance of Strength Testing in Cricket Bowling

Bowling requires repetitive explosive movements that place asymmetric loads on the body due to the unilateral nature of the action. Prior research suggests that strength imbalances can lead to compromised performance, increased energy expenditure, and heightened injury risk. Identifying and addressing these asymmetries can enhance performance consistency and reduce strain on vulnerable joints and muscle groups. Understanding the relationship between strength asymmetry and performance allows for better conditioning programs tailored to individual bowlers, ultimately improving both their effectiveness and longevity in the sport.

In cricket, the unilateral nature of bowling imposes asymmetric loads on the body, leading to potential strength imbalances. These imbalances can compromise performance and increase injury risk. Identifying and addressing such asymmetries is crucial for enhancing performance consistency and reducing strain on vulnerable joints and muscle groups. Understanding the relationship between strength asymmetry and performance allows for better conditioning programs tailored to individual bowlers, ultimately improving both their effectiveness and longevity in the sport.

Isometric strength testing offers objective and reliable measures of muscle function, minimizing variations caused by movement velocity and technique differences. This precision is essential for identifying muscle imbalances in cricket bowlers, enabling targeted training interventions.

Studies have utilized isometric assessments to explore the impact of strength on bowling technique and performance, providing valuable insights for conditioning programs. (Felton et al., 2024)

3.7 Importance of Key Muscle Groups in Bowling

Isometric strength testing offers objective and reliable measures of muscle function, minimizing variations caused by movement velocity and technique differences. This precision is essential for identifying muscle imbalances in cricket bowlers, enabling targeted training interventions.

Studies have utilized isometric assessments to explore the impact of strength on bowling technique and performance, providing valuable insights for conditioning programs.

Shoulders: The shoulders play a crucial role in generating force and controlling arm movement during bowling. Strength imbalances in the shoulder complex can affect arm speed, accuracy, and endurance while increasing the likelihood of shoulder injuries such as rotator cuff strains or impingements. Research highlights that isometric strength deficits in shoulder stabilizers can contribute to decreased throwing velocity and overall performance in overhead athletes. Crucial for generating force and controlling arm movement during bowling. Strength imbalances can affect arm speed, accuracy, and increase injury risk. (Olivier et al., 2020)

Obliques: The oblique muscles are essential for rotational power and core stability, both of which are critical for a bowler's efficiency. During the bowling action, the obliques facilitate trunk rotation and transfer kinetic energy from the lower body to the upper body. Weak or imbalanced obliques may lead to inefficient force transmission and reduced bowling speed. Studies suggest that core strength plays a pivotal role in optimizing energy transfer during athletic movements, improving both performance and injury prevention. Essential for rotational power and core stability, facilitating trunk rotation and energy transfer from the lower to upper body. Imbalances may lead to inefficient force transmission and reduced bowling speed.

(Common Cricket Injuries, n.d.)

Glutes: The gluteal muscles, particularly the gluteus maximus and medius, contribute significantly to lower-body stability, hip drive, and force generation. They provide the explosive power required to propel the bowler forward and maintain stability during the delivery stride.

Glute imbalances can lead to improper hip mechanics, reducing bowling speed and increasing the risk of lower back and hamstring injuries. Significant for lower-body stability, hip drive, and force generation. They provide the explosive power required for propulsion and stability during delivery. Imbalances can result in improper hip mechanics, reducing speed and increasing injury risk. (Buckthorpe et al., 2019)

Calves: The calves support ankle stability and provide the necessary push-off force during the delivery stride. Strong, well-balanced calves aid in shock absorption upon landing and contribute to maintaining optimal momentum throughout the bowling motion. Research indicates that lower limb asymmetry can negatively affect ground reaction force distribution, which is crucial in sports requiring explosive movements. Support ankle stability and provide necessary push-off force during the delivery stride. Balanced calf strength aids in shock absorption and maintaining momentum. (Pardiwala et al., 2017)

By systematically analyzing the effects of strength asymmetry in these muscle groups, this study aims to provide valuable insights into how muscular imbalances impact bowling performance and injury susceptibility. The findings will help coaches and sports scientists develop targeted training protocols that enhance performance and minimize injury risks among elite cricket bowlers.

3.8 Research Aim

This research aims to investigate the effects of strength asymmetry in bowlers on overall performance, with a particular focus on the implications of muscle imbalances for both athletic efficiency and injury risk. Muscle imbalances, particularly strength asymmetry, are a critical concern in bowling due to the repetitive, high-intensity nature of the sport. The asymmetrical demands placed on the body, especially in the upper and lower limbs, can lead to biomechanical inefficiencies, reduced performance, and an increased risk of injuries. This study aims to assess and characterize these imbalances in elite male bowlers by analyzing key strength parameters in both the upper and lower extremities. By identifying specific asymmetries, the research will help determine their impact on crucial performance metrics such as bowling speed, accuracy, and endurance. Additionally, the study will examine the extent to which these imbalances contribute to common injuries among bowlers, including stress fractures, muscle strains, and overuse injuries.

Understanding the relationship between muscle imbalances and performance outcomes will enable coaches, trainers, and sports scientists to implement targeted strength and conditioning interventions. By addressing asymmetries through corrective exercises, training programs can be designed to enhance power output, stability, and injury resilience, ultimately improving a bowler's overall effectiveness. Furthermore, this research will contribute to the growing body of sports science literature on cricket biomechanics, offering insights into best practices for injury prevention and performance optimization. The findings will not only benefit elite-level players but also provide guidance for developing athletes, ensuring that early detection and management of strength imbalances become a fundamental part of training and rehabilitation protocols.

By identifying specific asymmetries, the research will help determine their impact on crucial performance metrics such as bowling speed, accuracy, and endurance. Additionally, the study will examine the extent to which these imbalances contribute to common injuries among bowlers, including shoulder injuries, oblique muscle strains, and calf injuries. **This research specifically seeks to answer the question: How do upper- and lower-limb muscle imbalances influence the performance and injury risk of elite male bowlers?**

4.0 METHODOLOGY

4.1 Ethical Considerations

The study was approved by the institutional ethics committee, and informed consent was obtained from all participants. They were made aware of the voluntary nature of their participation and their right to withdraw at any stage.

4.2 Participants

This study was conducted with nine elite-level male bowlers, aged 18–30 years, from the Northern District Cricket Association, who regularly participate in competitive cricket. The participants comprised a mix of pacers and spin bowlers. The average age, weight, and height of the participants were 26.8 years, 85.9kg, and 186.6cm, respectively. The sample included players with both right-handed and left-handed bowling styles, as well as pace and spin bowlers. Informed consent was obtained from each participant prior to participation, and the study was approved by the institutional ethics review board.

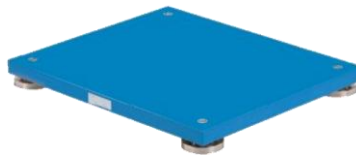
4.3 Research Design

A cross-sectional research design was employed to assess the effect of muscular asymmetry on bowling performance among elite cricketers. The four main muscular groups that were assessed were the shoulders, obliques, gluteus, calves. Using maximal force testing, the study compared the strength of each muscle group's dominant and non-dominant sides. The Obliques, Gluteus, and Calves were evaluated with a handheld dynamometer, and the Shoulder-I, Shoulder-Y, and Shoulder-T tests were performed on force plates.

4.4 Equipment

4.4.1 FORCE PLATE

Force platforms or force plates are measuring instruments that measure the ground reaction forces generated by a body standing on or moving across them, to quantify balance, gait and other parameters of biomechanics. Sports and medicine are the fields most frequently used. Along with other metrics and forces generated during movements of a sporting activity, such as walking, running, or jumping, it also measures direction, strength, and reactionary muscle activation time. It essentially applies kinematics to dynamics via analyzing motor patterns.



4.4.2 HAND-HELD DYNAMOMETER

Handheld Dynamometry is a small portable device held by the examiner and placed against the patient's limb during a maximal isometric contraction. The device can be used to test both proximal and distal muscles in all extremities. A dynamometer is a device that can measure force. The hand-held dynamometer is a small device that fits in the examiner's hand and is placed at precise locations on a subject's limb to assess the force generated by various muscles or groups of muscles.



The Lafayette Hand-Held Dynamometer was used to assess muscle strengths in this study. This device is commonly used in clinical and research settings to measure the maximum force a muscle can generate during isometric contraction. The dynamometer provides reliable, quantifiable data that is useful for evaluating muscle function, tracking rehabilitation progress, and assessing muscle imbalances, which are central to this study's objective.

4.5 Testing Day Protocol

Testing was done indoors in a controlled setting. Every participant completed a standardized warm-up that included dynamic stretching of the main muscle groups after five minutes of low-intensity aerobic exercise. After that, each testing procedure was demonstrated to the participants, and they were given two practice runs to get them acquainted. To avoid muscular exhaustion, two-minute rest periods were allowed in between each muscle group test.

4.6 General Instructions

Ensure all participants undergo a standardized warm-up a brief warm-up session, including light stretching and a demonstration by the examiner was conducted to familiarize the participants with the testing process. Each test will be performed only once. Ensure consistent positioning and alignment for all tests to maintain accuracy and reliability.

4.6 Strength Tests Description

4.7.1 IYT Test on Force Plate (Shoulder)

To set up the test, place the force plate on a flat, stable surface. The participant should lie prone on a secure surface, positioning their hands according to the designated test variations: I, Y, and T. In the I position, the arm is extended straight overhead with the palm facing down and placed on the force plate. For the Y position, the arm is angled approximately 45° from the body, with the palm also facing down on the force plate. In the T position, the arm is extended laterally at a 90° angle from the torso, again with the palm facing down on the force plate. During execution, the participant presses down into the force plate with maximal effort for five seconds in each position, using both the dominant and non-dominant sides. Force output is recorded, and a 30-second rest period is provided between each variation. Peak force data is captured for each position to assess performance.

4.7.2 Side Plank using MMT (Oblique)

To set up the test, securely attach a Manual Muscle Tester (MMT) to a squat rack at the participant's waist height. The participant then assumes a side plank position, balancing on their forearm with feet stacked. The MMT is positioned against the oblique to measure force output. During execution, the participant maintains the side plank while exerting maximal force against

the MMT for five seconds. Proper spinal alignment is ensured to prevent compensatory movements. Peak force output is measured and recorded for analysis.

4.7.3 Donkey kick with MMT (Gluteus)

For setup, the participant assumes a quadruped position on their hands and knees. The Manual Muscle Tester (MMT) is positioned against the heel of the kicking leg. Proper positioning includes maintaining a neutral spine and ensuring the knee remains flexed at 90 degrees. During execution, the participant performs a donkey kick, pressing maximally against the MMT for five seconds. Peak force data is captured and documented for analysis.

4.7.4 Calf Raises with Calf Raiser App

For setup, a small platform is used, and the participant holds a weight equivalent to 30% of their body weight on the same shoulder. In the proper positioning, one foot is placed on the box while the other leg hangs freely, with the weight carried on the same side as the working leg. During execution, the participant performs three consecutive calf raises with maximum effort. Peak power for each repetition is measured using force plates or an accelerometer. Two iPads, with the Calf Raiser App installed, were positioned at an angle to capture the movement of heel raising in a video. The recorded video was then analyzed using the Calf Raiser App, with force output measured in Newtons (N). The three attempts were averaged, and the highest power output was documented.

4.8 Data Collection and Analysis

The dynamometer and force plate readings were recorded in Newtons (N) for all tests. In the Calf Raiser App, the highest power output was documented as an average in Newtons (N). The average peak force was calculated for each player, and the data was analyzed to identify muscle

imbalances and trends among different player roles, specifically pacers and spinners, as well as their proficiency levels.

4.9 Quality Control Measures

To ensure consistency, all tests were conducted by the same examiner. The force plate, and dynamometer were calibrated before testing to ensure accuracy. Any participant reporting discomfort or an inability to exert maximum force was excluded from the study to maintain data integrity.

5.0 RESULTS

5.1 Mean Strength

The mean strength values for the dominant and non-dominant sides as well as the isometric strength values across various muscle groups for elite male bowlers, including pace bowlers, spin bowlers, and the overall bowling group, are summarized in the table 1 and table 2.

Raw data for Upper limb

Category	I-DOM	I-ND	Y-DOM	Y-ND	T-DOM	T-ND	OB-DOM	OB-ND
Overall	208.7 ± 66.8	153.6 ± 46.9	150.9 ± 23.9	132.6 ± 23.6	160.9 ± 23.1	134.6 ± 20.4	264.9 ± 100.0	279.7 ± 119.3
Bowlers	208.7 ± 66.8	153.6 ± 46.9	150.9 ± 23.9	132.6 ± 23.6	160.9 ± 23.1	134.6 ± 20.4	264.9 ± 100.0	279.7 ± 119.3
Pacer	199.6 ± 59.0	150.7 ± 50.2	143.1 ± 20.8	125.3 ± 16.9	157.8 ± 23.3	134.6 ± 22.3	286.5 ± 103.9	306.4 ± 123.4
Spinner	240.8 ± 110.1	163.9 ± 46.7	178.3 ± 5.9	158.3 ± 32.0	171.7 ± 26.7	134.7 ± 18.5	189.3 ± 22.2	186.2 ± 9.6

Table 1. Strength data (mean ± standard deviations (N)) of Upper limb (Shoulder-I, Shoulder-Y, Shoulder-T, and Obliques) of all the bowlers.

Raw data for Lower limb

Category	GL-DOM	GL-ND	CL-DOM	CL-ND
Overall	419.4 ± 67.3	432.4 ± 64.8	396.8 ± 201.6	370.1 ± 185.4
Bowlers	419.4 ± 67.3	432.4 ± 64.8	396.8 ± 201.6	370.1 ± 185.4
Pacer	438.0 ± 59.5	455.9 ± 51.7	420.5 ± 225.9	405.0 ± 195.3
Spinner	354.4 ± 63.9	349.9 ± 3.7	314.1 ± 37.2	248.1 ± 88.0

Table 2. Strength data (mean ± standard deviations (N)) of Lower limb (Gluteus and Calf) of all the bowlers.

5.2 Isometric Strength Values

The **table 1** provides insights into the strength asymmetries between the dominant (DOM) and non-dominant (ND) sides of various muscle groups in elite male bowlers. The Overall and Bowlers groups exhibit similar strength trends, suggesting a general pattern of muscle imbalances among cricketers. Notably, I-DOM (208.7) vs. I-ND (153.6) indicates a substantial disparity. Similarly, Y-DOM (150.9) vs. Y-ND (132.6) and T-DOM (160.9) vs. T-ND (134.6) reveal moderate asymmetries across different movement planes. Interestingly, the oblique muscles (OB-DOM: 264.9 vs. OB-ND: 279.7) demonstrate a relatively smaller imbalance.

When comparing pacers and spinners, pacers show lower overall imbalances than spinners, indicating a more even force distribution. Pacers exhibit I-DOM (199.6) vs. I-ND (150.7), implying a stronger reliance on both sides of the body compared to spinners (I-DOM: 240.8 vs. I-ND: 163.9). Spinners also demonstrate higher values for Y-DOM (178.3) and T-DOM (171.7). Furthermore, pacers display higher oblique muscle activation (OB-DOM: 286.5, OB-ND: 306.4) than spinners (OB-DOM: 189.3, OB-ND: 186.2).

The findings from the **table 2** provide insights into the strength asymmetries between the dominant (DOM) and non-dominant (ND) sides of different muscle groups. The Overall and Bowlers groups demonstrate similar strength trends, with notable disparities in dominant-side engagement. The I-DOM (208.7) vs. I-ND (153.6) difference highlights a considerable imbalance. Similarly, Y-DOM (150.9) vs. Y-ND (132.6) and T-DOM (160.9) vs. T-ND (134.6) indicate moderate asymmetries across movement planes. Interestingly, the oblique muscles (OB-DOM: 264.9 vs. OB-ND: 279.7) show a smaller imbalance.

When comparing pacers and spinners, pacers show lower overall imbalances than spinners. For instance, pacers exhibit I-DOM (199.6) vs. I-ND (150.7), implying a more evenly distributed force application compared to spinners (I-DOM: 240.8 vs. I-ND: 163.9). Spinners also exhibit higher values for Y-DOM (178.3) and T-DOM (171.7) compared to pacers. Additionally, pacers show greater oblique muscle activation (OB-DOM: 286.5, OB-ND: 306.4) than spinners (OB-DOM: 189.3, OB-ND: 186.2).

5.3 Muscle Imbalances

The muscle imbalance values for various muscle groups, Shoulder-I, Shoulder-Y, Shoulder-T, Obliques, Glut, and Calf (I-IMB, Y-IMB, T-IMB, GLUT-IMB, OB-IMB, and CALF-IMB), were calculated for each bowling group and presented in the **table 3**. Significant differences were observed in the spin bowling group, which exhibited higher overall muscle imbalances compared to pacers and the general bowling population.

Category	I-IMB	Y-IMB	T-IMB	GLUT- IMB	OB-IMB	CALF-IMB
Overall	55.1 ± 41.7	18.3 ± 27.5	26.3 ± 26.1	-12.9 ± 35.1	-14.8 ± 38.4	115.4 ± 278.6
Bowlers	55.1 ± 41.7	18.3 ± 27.5	26.3 ± 26.1	-12.9 ± 35.1	-14.8 ± 38.4	115.4 ± 278.6

Pacer	48.9 ± 38.0	17.8 ± 29.9	23.2 ± 22.7	-17.9 ± 30.1	-19.9 ± 42.4	129.5 ± 319.4
Spinner	76.9 ± 63.4	20.0 ± 26.2	37.0 ± 45.1	4.4 ± 60.2	3.1 ± 12.6	66.0 ± 50.8

Table 3. Muscle Imbalances between dominant and non-dominant side of bowlers.

The **table 3** provides insights imbalances between the dominant (DOM) and non-dominant (ND) sides in bowlers. The Overall and Bowler groups show similar values across all muscle groups, indicating a general trend of muscle imbalances among players. The I-DOM (208.7) vs. I-ND (153.6) difference highlights a significant strength disparity. Similarly, Y-DOM (150.9) vs. Y-ND (132.6) and T-DOM (160.9) vs. T-ND (134.6) suggest moderate asymmetries in different movement planes. The oblique muscles (OB-DOM: 264.9 vs. OB-ND: 279.7) show relatively smaller imbalances.

When analyzing bowlers by type, pacers show lower overall imbalances compared to spinners. Pacers demonstrate I-DOM (199.6) vs. I-ND (150.7), a moderate imbalance still exists. Spinners, on the other hand, display I-DOM (240.8) vs. I-ND (163.9). Additionally, spinners exhibit higher values for Y-DOM (178.3) and T-DOM (171.7) compared to pacers. Interestingly, pacers show higher OB-DOM (286.5) and OB-ND (306.4) values than spinners (OB-DOM: 189.3, OB-ND: 186.2).

Notably, spinners demonstrated greater I-IMB (76.9 ± 63.4) and T-IMB (37.0 ± 45.1), indicating a higher degree of strength asymmetry in these movement patterns. Additionally, gluteal imbalance (GLUT-IMB: 4.4 ± 60.2) and oblique imbalance (OB-IMB: 3.1 ± 12.6) in spinners

were considerably different from the negative values seen in pacers. The calf imbalance (CALF-IMB: 66.0 ± 50.8) in spinners was notably lower than in pacers (129.5 ± 319.4).

5.4 p-values for Muscle Imbalances Comparisons

p-values	I-IMB	Y-IMBAL	T-IMBAL	GLUT- IMBAL	OB-IMBAL	CALF- IMBAL
SPIN vs PACE	0.7689	0.9906	0.6217	0.5528	0.4276	0.1704

Table 4: p-value comparison of muscle imbalances between pacers and spinners.

Table 4 provides a statistical comparison of muscle imbalances between spin and pace bowlers reveals no statistically significant differences across all measured parameters, as indicated by the p-values exceeding 0.05. The I-IMB ($p = 0.7689$), Y-IMB ($p = 0.9906$), and T-IMB ($p = 0.6217$) values suggest that the overall imbalance patterns in these movement groups are comparable between the two bowling styles. Additionally, the gluteal imbalance (GLUT-IMB: $p = 0.5528$) and oblique imbalance (OB-IMB: $p = 0.4276$) do not show significant variation. The calf imbalance (CALF-IMB: $p = 0.1704$) is the lowest among the observed values.

5.5 Effect Size Differences

The data highlights the differences in muscle strength between the dominant (DOM) and non-dominant (ND) limbs across various muscle groups, including shoulder (SHLD-I, SHLD-Y, SHLD-T), gluteal (GLUT), oblique, and calf muscles.

Variability in strength is also observed across groups, with the dominant group showing higher standard deviations (SD), particularly in SHLD-I (66.75) and CALF (201.58). Conversely, the non-dominant group exhibits lower variability in SHLD-T, GLUT, and OBLIQUE muscles. As seen in the p-value for SHLD-I (0.0041), it indicates a significant difference in shoulder internal rotation strength between the two limbs. Other muscle groups, such as SHLD-Y ($p = 0.0815$) and SHLD-T ($p = 0.0165$), show weaker statistical significance. Additionally, the Cohen's d values for SHLD-I (-0.86), SHLD-Y (-0.70), and SHLD-T (-1.09) suggest medium to large effect sizes.

When both groups are combined, the overall mean values for SHLD-I (181.16) and SHLD-Y (141.74) fall between the values of the dominant and non-dominant groups, as expected. The p-values with SHLD-I (0.0041), SHLD-T (0.0165), and CALF (0.0361) showing meaningful asymmetries, while others, such as OBLIQUE and GLUT, do not show significant differences

5.6 Differences of Dominant and Non-Dominant sides

The p-values indicate the statistical significance of the differences in muscle strength between the dominant (DOM) and non-dominant (ND) sides across multiple muscle groups. A p-value of less than 0.05 typically suggests a statistically significant difference. Among the measured variables, SHLD-I (Shoulder I) presents a p-value of 0.0041. Similarly, SHLD-T (Shoulder T) shows a significant p-value of 0.0165. The calf muscle imbalance ($p = 0.0361$) is also statistically significant, suggesting that the strength difference between the dominant and non-dominant calves.

On the other hand, SHLD-Y ($p = 0.0815$), GLUT ($p = 0.3006$), and OBLIQUE ($p = 0.2820$) do not demonstrate statistically significant differences. Although SHLD-Y has a p-value close to the threshold, it does not reach statistical significance.

The Cohen's d values provide insight into the effect size or magnitude of the strength imbalances between the two limbs. For SHLD-I (-0.86) and SHLD-T (-1.09), the effect sizes are large. The moderate effect size for SHLD-Y (-0.70) further reinforces a measurable asymmetry. In contrast, GLUT (0.18) and OBLIQUE (0.12) have small effect sizes. The calf muscle imbalance (-0.31) has a small negative effect size.

The confidence limits provide additional insights into the range of variability in strength asymmetry. For instance, SHLD-I has a broad confidence interval (-1.27 to -0.46). Similarly, SHLD-T and SHLD-Y exhibit moderate-to-large confidence ranges. In contrast, GLUT and OBLIQUE have smaller confidence ranges. The calf muscle shows a larger range of variation, but with a negative directional change

5.7 Ratio of Dominant and Non-Dominant sides

The ratio of standard deviations (SD) provides insight into the variability in strength measurements between the experimental group (bowlers) and the control group. A ratio above 1.25 or below 0.80 may indicate clinically significant asymmetries, suggesting greater variability in one group compared to the other. Among the muscle groups analyzed, SHLD-I (Shoulder I) has a ratio of 0.70, indicating less variability in the experimental group compared to the control group. The confidence limits for this ratio range from 0.38 to 1.30, meaning the true value could fluctuate within these bounds, but it remains within a clinically acceptable range.

SHLD-Y (Shoulder Y) exhibits a ratio of 0.99, indicating a nearly equal level of variability between the two groups. The confidence limits (0.53–1.83) suggest some uncertainty, but since the ratio is close to the 0.80 threshold, any imbalance in this muscle group is not considered clinically significant, though it may

have moderate performance implications. Similarly, SHLD-T (Shoulder T) has a ratio of 0.88, indicating slightly more variability in one group compared to the other. Its confidence limits range from 0.48 to 1.63, suggesting that while asymmetry is present, it does not reach a clinically meaningful level, though it could still influence performance efficiency and injury susceptibility.

For GLUT (Gluteal Strength), the ratio is 0.96, meaning there is low variability between the groups. With confidence limits of 0.52 to 1.78, this result falls within the clinically trivial range, indicating no significant glute strength imbalance. OBLIQUE strength shows a ratio of 1.19, suggesting moderate variability between groups, with confidence limits spanning 0.64 to 2.21. Although this ratio is slightly above the 1.25 clinical threshold, it still falls within a less significant range, meaning any imbalance observed in the oblique muscles is not clinically relevant. Finally, CALF strength displays a ratio of 1.03, with confidence limits between 0.58 and 1.60. While this suggests a slight imbalance in calf strength between the two groups, it is considered trivial-small in significance based on its percentage chance calculations.

Further analysis of clinical significance probabilities provides additional insights. The SHLD-I muscle group has a 64% chance that the true ratio is less significant, with a 30% chance for trivial significance, indicating that shoulder-I imbalances are unlikely to have a meaningful impact on performance. SHLD-Y has a 46% chance of trivial significance, with a 28% probability of less significance, further reinforcing that any imbalance in this muscle group is mostly trivial. SHLD-T has a 43% chance of trivial significance, while 40% of cases show less significant differences, suggesting that although an imbalance exists, it is not severe enough to require immediate intervention.

For the GLUT (Gluteal Strength), there is a 46% chance of trivial significance and a 31% chance of less significance, meaning that glute imbalances are not a major concern in bowlers. OBLIQUE strength, on the other hand, has a 45% chance of more significance, with 54% showing less significance, indicating moderate importance in overall movement efficiency. Lastly, CALF strength shows a 23% chance of

more significance and a 23% chance of less significance, suggesting that although calf imbalances are minor, they may still have some impact on lower-limb stability and endurance.

5.8 Overall Observations:

Pacers: Pacers exhibit lower overall muscle imbalances compared to spinners, indicating a more balanced force distribution. They show moderate strength disparities in Shoulder-I (I-DOM: 199.6 vs. I-ND: 150.7) but exhibit higher oblique muscle activation (OB-DOM: 286.5, OB-ND: 306.4) than spinners. Their calf imbalance (129.5 ± 319.4) is also significantly higher

Spinners: Spinners display greater overall muscle imbalances, particularly in Shoulder-I (I-DOM: 240.8 vs. I-ND: 163.9), Shoulder-T (T-DOM: 171.7), and oblique muscles (OB-DOM: 189.3, OB-ND: 186.2). They exhibit significantly higher strength asymmetries (I-IMB: 76.9 ± 63.4 , T-IMB: 37.0 ± 45.1) than pacers. While their calf imbalance (66.0 ± 50.8) is lower than pacers, they show higher upper-body asymmetry.

Dominant vs. Non-Dominant Imbalances: Significant dominant-side strength disparities exist, particularly in Shoulder-I ($p = 0.0041$) and Shoulder-T ($p = 0.0165$), with moderate to large effect sizes (SHLD-I: -0.86, SHLD-T: -1.09). The calf muscle imbalance ($p = 0.0361$) also suggests notable strength differences. Other muscle groups, such as gluteal ($p = 0.3006$) and oblique ($p = 0.2820$), show non-significant imbalances.

6.0 DISCUSSION

6.1 Muscle Imbalances in Bowlers

The results indicate a clear presence of muscle imbalances in elite male bowlers, with spin bowlers exhibiting greater overall asymmetries compared to pace bowlers. The observed disparities in Shoulder-I (I-IMB: 76.9 ± 63.4), Shoulder-T (T-IMB: 37.0 ± 45.1), and oblique strength (OB-DOM: 189.3 vs. OB-ND: 186.2) among spinners suggest a pronounced reliance on one side of the body. Conversely, pacers demonstrate a more evenly distributed force application, with lower values in I-IMB (48.9 ± 38.0) and T-IMB (23.2 ± 22.7), alongside higher oblique muscle activation (OB-DOM: 286.5, OB-ND: 306.4). Despite these imbalances, statistical comparisons (Table 4) indicate no significant differences (p-values > 0.05) between the two bowling groups in terms of overall muscle imbalances, suggesting that while imbalances exist, they do not deviate significantly between bowling styles. However, the greater strength asymmetries in spinners could potentially influence performance and injury susceptibility over time.

Muscle imbalances in elite bowlers, particularly in the upper body, indicate distinct biomechanical adaptations based on bowling style. Spinners, due to their repetitive rotational movements and arm-dominant action, develop pronounced strength asymmetries, especially in rotator cuff muscles. This suggests that spinners rely heavily on their dominant side for generating spin and control, leading to an uneven load distribution across the upper body. In contrast, pacers exhibit a relatively balanced force application, likely due to the dynamic nature of their bowling motion, which involves a greater degree of lower-limb engagement and kinetic chain coordination. The higher oblique muscle activation observed in pacers further supports this

notion, as the core plays a crucial role in maintaining stability and force transmission during fast bowling. Although statistical comparisons reveal no significant differences between bowling styles, the persistent imbalances in spinners indicate a higher predisposition to muscular overuse and injury over time. Addressing these asymmetries through targeted strength training and corrective exercises can enhance performance efficiency while mitigating the risk of chronic musculoskeletal issues.

6.2 Dominant vs. Non-Dominant Side Strength

A significant discrepancy was observed between the dominant (DOM) and non-dominant (ND) limbs across multiple muscle groups. The most pronounced differences were noted in Shoulder-I (I-DOM: 208.7 vs. I-ND: 153.6) and Shoulder-T (T-DOM: 160.9 vs. T-ND: 134.6), both of which exhibited large effect sizes (SHLD-I: -0.86, SHLD-T: -1.09). The calf muscle imbalance ($p = 0.0361$) further supports the existence of meaningful strength asymmetries between the two limbs. Although the oblique ($p = 0.2820$) and gluteal ($p = 0.3006$) muscles did not show statistically significant differences, their respective imbalances (OB-DOM: 264.9 vs. OB-ND: 279.7 and GL-DOM: 419.4 vs. GL-ND: 432.4) suggest functional adaptations that could influence overall movement efficiency. These asymmetries highlight the need for targeted interventions to mitigate potential biomechanical inefficiencies that may arise due to over-reliance on the dominant limb.

The observed strength discrepancies between the dominant and non-dominant limbs indicate a significant reliance on the dominant side across multiple muscle groups, particularly in the shoulder and lower limb regions. This pattern suggests that elite bowlers develop muscle imbalances due to repetitive unilateral movements, which may lead to biomechanical inefficiencies over time. The substantial differences in Shoulder-I (I-DOM: 208.7 vs. I-ND:

153.6) and Shoulder-T (T-DOM: 160.9 vs. T-ND: 134.6) highlight the increased workload on the dominant limb, potentially predisposing it to overuse injuries such as rotator cuff strain and shoulder impingement. Similarly, the calf muscle imbalance ($p = 0.0361$) suggests asymmetrical lower-limb loading, which could impact sprinting mechanics and overall stability during the bowling stride. While the oblique and gluteal muscle imbalances are less pronounced, their role in core stabilization and kinetic chain efficiency cannot be overlooked. These findings emphasize the necessity of incorporating unilateral strength training and mobility exercises to address these asymmetries, ensuring that both limbs contribute evenly to force generation and reducing the likelihood of injury over prolonged periods of competition.

6.3 Implications for Injury Risks

The presence of muscle imbalances, particularly in the upper limb, has critical implications for injury risk in elite bowlers. The substantial differences in Shoulder-I and Shoulder-T strength, especially among spinners, may contribute to a higher likelihood of rotator cuff injuries, shoulder impingement, and chronic muscular strain. Additionally, the greater calf imbalance observed in pacers (129.5 ± 319.4) may predispose them to lower-limb injuries, including Achilles tendon strains and ankle instability. The observed non-significant differences in gluteal and oblique strength suggest that while these muscle groups do not exhibit extreme imbalances, they still play a crucial role in maintaining stability and force transfer during bowling actions. Addressing these imbalances through targeted training and rehabilitation programs is essential to enhance performance longevity and reduce injury prevalence.

Muscle imbalances in elite bowlers create a mechanical overload on specific muscle groups, increasing the risk of chronic injuries and movement inefficiencies. In spinners, the significant strength asymmetries in the shoulder complex place excessive strain on the rotator cuff and

scapular stabilizers, potentially leading to shoulder impingement, labral tears, and reduced throwing efficiency over time. Additionally, the repetitive nature of their unilateral rotational movements may result in compensatory stress on the lower back and oblique muscles, increasing the risk of lumbar strains and side strains, which are common among spin bowlers. Pacers, on the other hand, experience higher lower-limb loading, with greater calf imbalances (129.5 ± 319.4) that could contribute to Achilles tendon injuries, shin splints, or ankle instability due to uneven force absorption during high-impact landing phases. While the gluteal and oblique muscles do not show significant statistical asymmetries, their role in kinetic chain stability suggests that even minor imbalances could disrupt force transfer during bowling, increasing susceptibility to hip, knee, and lumbar injuries. To minimize these risks, bowlers must adopt a structured strength and conditioning program that prioritizes bilateral muscle engagement, corrective exercises, and mobility work to address these imbalances, thereby enhancing resilience and prolonging athletic careers.

6.4 Training and Rehabilitation Recommendations

Given the identified imbalances, a structured training approach should be implemented to promote bilateral strength symmetry and improve muscular endurance in elite bowlers. For spinners, targeted resistance training focusing on the non-dominant shoulder and trunk stabilization exercises can help mitigate asymmetries in Shoulder-I and Shoulder-T strength. Strength and conditioning programs should emphasize eccentric loading and proprioceptive training to enhance joint stability and reduce injury risk.

Pacers, on the other hand, should prioritize lower limb strengthening exercises, particularly calf and gluteal muscle activation drills, to address the observed discrepancies in these muscle groups. Incorporating unilateral training modalities, such as single leg plyometrics and

asymmetrical resistance exercises, can further help in balancing force application across both limbs. Additionally, prehabilitation programs, including mobility drills and neuromuscular control exercises, should be integrated into training routines to prevent the accumulation of muscular imbalances over time. Finally, consistent monitoring of strength ratios and individualized rehabilitation plans will be essential in ensuring long-term muscular balance and injury prevention in elite bowlers.

To effectively address muscle imbalances in elite bowlers, training and rehabilitation programs should be individualized and sport-specific, focusing on the demands of both pace and spin bowling. Spinners, who demonstrate greater upper-body asymmetry, should incorporate resistance-based strengthening for the non-dominant shoulder and scapular stabilizers to correct imbalances in Shoulder-I and Shoulder-T tests. Isometric and eccentric exercises, particularly for the rotator cuff and posterior shoulder muscles, can enhance stability and reduce overuse-related injuries. Meanwhile, pacers, who experience higher lower-limb imbalances, should emphasize calf strengthening, ankle stability drills, and plyometric exercises to mitigate disparities in force absorption during landing and sprinting phases.

Additionally, core engagement exercises such as anti-rotation movements and unilateral stability drills will benefit both bowling styles by improving kinetic chain efficiency and reducing compensatory stress on weaker muscle groups. Mobility and flexibility programs, particularly for the hips, thoracic spine, and shoulders, should be integrated into training routines to improve range of motion and functional movement patterns. Finally, periodic strength assessments and biomechanical evaluations should be conducted to track progress and adjust rehabilitation protocols, accordingly, ensuring sustained performance improvements and long-term injury prevention.

6.5 Statistical Analysis of Muscle Imbalances

The statistical analysis of muscle imbalances provides a comprehensive understanding of asymmetry patterns among bowlers, using both average values and standard deviation measures. The mean values indicate the general tendency of imbalances in different muscle groups, revealing that pacers experience significant asymmetry in lower-body regions such as the calves (129.5%) and obliques (-19.9%), while spinners exhibit greater imbalances in upper-body metrics, notably internal imbalance (76.9%) and total imbalance (37.0%). These differences highlight the distinct biomechanical demands and repetitive movement patterns inherent to each bowling style.

The standard deviation (SD) values further illustrate the variability of these imbalances within each group. Higher SD values in certain areas, such as calf imbalance for pacers (319.4%) and glute imbalance for spinners (60.2%), indicate greater inconsistency in muscle asymmetries among individuals. This suggests that some bowlers experience extreme deviations from symmetry, potentially predisposing them to performance inefficiencies or injury risks. Meanwhile, lower SD values in certain categories, such as oblique imbalance in spinners (12.6%), suggest a more uniform imbalance pattern across this group.

The statistical findings highlight the importance of individualized training interventions to address muscle asymmetries specific to pacers and spinners. By recognizing the mean imbalance trends and their variability, strength and conditioning programs can be tailored to mitigate excessive asymmetries, improve muscular stability, and enhance injury prevention strategies for bowlers.

6.6 Novelty of this study:

6.6.1 What we knew then

The relationship between muscle asymmetry and injury risk in cricket bowlers has been a topic of interest in sports science and biomechanics. Previous research has established that strength imbalances can contribute to inefficiencies in movement patterns and increase the likelihood of injury (Bartlett et al., 1996; Dennis et al., 2008). While studies have highlighted the importance of muscular balance in overhead athletes, there has been a limited focus on bowlers, particularly in distinguishing the impact of asymmetries between spin and pace bowlers (Olivier et al., 2020). Furthermore, existing research has primarily relied on general strength assessments without utilizing specialized biomechanical testing methods such as isometric dynamometry and force plate analysis, which offer precise quantification of muscle imbalances (Felton et al., 2024).

Prior studies have suggested that these imbalances may influence injury susceptibility (Gamage et al., 2017), but this study provides empirical evidence that links specific muscle imbalances to potential performance inefficiencies and injury risks. Additionally, while previous literature has proposed that pacers and spinners exhibit different kinetic demands, the current research quantifies these discrepancies, reinforcing the need for tailored training interventions based on bowling specialization.

Additionally, this research contributes to the field by proposing targeted strength-training interventions based on isometric assessment findings. While previous studies have suggested general strength training as a method to reduce injury risk (Buckthorpe et al., 2019), this study

emphasizes the importance of unilateral exercises, proprioceptive training, and eccentric loading to correct specific asymmetries.

6.6.2 What we know now

This study provides novel insights by systematically evaluating muscle imbalances in both upper and lower limbs, emphasizing differences between pace and spin bowlers. Unlike prior investigations, which predominantly focused on either general strength assessment or injury prevalence in cricket bowlers, this research integrates isometric strength testing with force plate technology to objectively measure asymmetries in key muscle groups, including the shoulders, obliques, glutes, and calves. The findings reveal distinct asymmetry patterns based on bowling styles, with spinners demonstrating greater upper-body imbalances, particularly in shoulder strength, while pacers exhibit pronounced lower-body asymmetries, notably in the calves. This differentiation underscores the biomechanical adaptations required for each bowling style, providing a more refined understanding of the physiological demands placed on cricketers.

Another key advancement from this study is the statistical analysis of muscle asymmetries, which goes beyond conventional observational assessments. By utilizing effect size measurements and p-value comparisons, this research confirms significant dominant-side strength disparities in the shoulder and calf muscles ($p < 0.05$).

Moreover, the study extends prior knowledge by emphasizing the functional implications of these asymmetries in energy transfer, core stability, and recovery. However, this study provides a

sport-specific perspective, demonstrating how shoulder and oblique imbalances affect rotational mechanics in spinners, whereas calf and gluteal imbalances impact lower-limb stability in pacers.

7.0 CONCLUSION

With an emphasis on upper and lower limb imbalances, this study examined how strength asymmetry affected top male bowlers' performance and risk of injury. The results showed that there are strength asymmetries in a few muscle groups, with significant differences between the dominant and non-dominant sides. While pacers showed higher asymmetries in lower-limb muscles like the calves, spinners showed more abnormalities overall, especially in shoulder strength. The discovered muscular imbalances draw attention to the unique demands of bowling in cricket, where repetitive unilateral motions lead to biomechanical inefficiencies and uneven force distribution. The results indicate that chronic strength asymmetries may eventually affect both performance consistency and injury susceptibility, even though there were no statistically significant variations in overall muscle imbalances between pacers and spinners.

One important conclusion of these results is that bowlers who have strength imbalances are more likely to sustain injuries. Spinners are more prone to shoulder-related problems including rotator cuff strains and impingements because of their greater upper-body asymmetries. On the other hand, pacers are more likely to sustain lower-limb problems including Achilles tendon strains and ankle instability because they exhibit more lower-body abnormalities. These results highlight the necessity for focused strength and conditioning therapies and are consistent with previous research that suggests muscle asymmetry plays a role in biomechanical inefficiencies and overuse injuries. Even though certain muscle groups, such as the glutes and obliques, did not exhibit statistically significant changes, their function in maintaining the stability of the kinetic chain implies that even slight imbalances could impair the transmission of force during bowling motions.

The findings of the study also highlight how crucial it is to put in place organized training and recovery plans in order to treat muscular asymmetries in professional bowlers. In addition to proprioceptive exercises and mobility drills, targeted resistance training for the non-dominant limb can help address imbalances and lower the risk of overuse injuries. While pacers should concentrate on lower-body development, especially in the calves and glutes, to improve force absorption and stability, spinners should prioritize shoulder and core stability exercises to balance upper-limb strength. Furthermore, by integrating unilateral training techniques and isometric strength evaluations into routine conditioning regimens, strength inequalities can be identified early and managed to improve long-term sports performance and injury prevention.

By offering empirical insights into muscle asymmetries among elite bowlers, this study adds to the expanding corpus of sports science literature on cricket biomechanics. Strength symmetry is essential for improving bowling performance, lowering injury risk, and extending career length, according to the study. By incorporating motion analysis methods, incorporating bigger sample numbers, and evaluating the long-term effects of focused corrective training treatments on performance outcomes, future research should build on these findings. Furthermore, examining strength asymmetry in younger athletes and female bowlers may shed further light on the ways that early training interventions affect injury resilience and muscle balance.

To sum up, strength asymmetry has a significant impact on elite bowlers' performance and vulnerability to injuries. Although muscle imbalances are a result of natural biomechanical adaptations to unilateral bowling actions, these discrepancies can be addressed by evidence-based training techniques to improve performance efficiency and lower the risk of long-term injuries. To guarantee that bowlers acquire a well-balanced physical profile, coaches, sports scientists, and rehabilitation specialists should place a high priority on tailored strength

evaluations and remedial interventions. This will ultimately promote long-term performance and longevity in the sport.

8.0 Limitations and Future Directions

8.1 Limitations

Despite the valuable insights provided by this study, several limitations must be acknowledged.

Firstly, the sample size of nine elite male bowlers is relatively small, which may limit the generalizability of the findings to a broader population of cricketers, including female players and developing athletes. A larger, more diverse sample could provide a more comprehensive understanding of strength asymmetries across different levels of play and demographic groups. Additionally, while the study focused on elite-level bowlers, the findings may not fully apply to amateur or junior cricketers, whose biomechanical adaptations and strength asymmetries could differ due to varying training loads and skill levels.

Furthermore, while isometric strength testing and force plate assessments were used to measure asymmetries, the study did not include dynamic assessments such as electromyography (EMG) analysis or motion capture, which could have provided deeper insights into neuromuscular coordination and movement mechanics during actual bowling deliveries. The integration of such technologies would enhance the precision of biomechanical evaluations and offer a more complete understanding of functional asymmetries.

Additionally, while this study identified muscle imbalances and their potential implications for performance and injury risk, it did not directly assess the effectiveness of specific intervention strategies. Moreover, psychological factors such as fatigue, mental stress, and habitual movement patterns, which may also contribute to strength asymmetries, were not considered in this study. These factors could be crucial in understanding why certain asymmetries persist despite targeted training efforts.

8.2 Future Directions

Future research should aim to expand upon these findings by incorporating larger, more diverse cohorts, including female cricketers and youth athletes, to assess whether strength asymmetries manifest differently based on sex, age, and skill level. Longitudinal studies should be conducted to track changes in muscle imbalances across different phases of a cricket season, allowing researchers to determine whether fatigue, workload, or recovery protocols impact the progression of asymmetries. This would provide a clearer picture of how training modifications influence muscle balance and injury prevention over time.

Furthermore, the inclusion of more advanced biomechanical assessment techniques, such as motion capture technology, 3D kinematic analysis, and electromyography, would allow researchers to evaluate the dynamic implications of strength asymmetries in real-time bowling actions. These tools could help identify compensatory movement patterns that may not be detected through isometric strength testing alone. Additionally, research should explore the role of neuromuscular control and proprioception in bowling mechanics, as deficiencies in these areas may contribute to performance inefficiencies and injury susceptibility.

Intervention-based studies should also be prioritized, investigating the efficacy of tailored strength and conditioning programs aimed at correcting muscle imbalances in elite bowlers. Comparing different training modalities such as resistance training, plyometrics, and unilateral strength exercises would provide evidence-based recommendations for optimizing performance and reducing injury risks. Moreover, future studies should examine the long-term effects of addressing muscle asymmetries on career longevity, as well as their potential influence on player retention and overall team performance.

Lastly, exploring the relationship between strength asymmetry and specific injury occurrences would further strengthen the practical application of this research. By analyzing injury history in conjunction with muscle imbalance data, future studies could develop predictive models that help coaches and sports scientists implement preemptive injury prevention strategies. This would bridge the gap between research and real-world applications, ensuring that strength symmetry is prioritized in cricket training and rehabilitation programs for sustained athletic success.

9.0 REFERENCES

- Bagordo, A., Ciletti, K., Kemp-Smith, K., Simas, V., Climstein, M., & Furness, J. (2020). Isokinetic Dynamometry as a Tool to Predict Shoulder Injury in an Overhead Athlete Population: A Systematic Review. *Sports*, 8(9), 124. <https://doi.org/10.3390/sports8090124>
- Bartlett, R. M., Stockill, N. P., Elliott, B. C., & Burnett, A. F. (1996). The biomechanics of fast bowling in men's cricket: A review. *Journal of Sports Sciences*, 14(5), 403–424. <https://doi.org/10.1080/02640419608727727>
- Bilateral difference between lower limbs in children practicing laterally dominant vs. Non-laterally dominant sports—Guan—2021—European Journal of Sport Science—Wiley Online Library.* (n.d.). Retrieved February 20, 2025, from <https://onlinelibrary.wiley.com/doi/10.1080/17461391.2020.1814425>
- Buckthorpe, M., Stride, M., & Villa, F. D. (2019). ASSESSING AND TREATING GLUTEUS MAXIMUS WEAKNESS – A CLINICAL COMMENTARY. *International Journal of Sports Physical Therapy*, 14(4), 655–669.
- Common Cricket Injuries: Symptoms, Causes, Prevention & Treatment | Cricfit.* (n.d.). Retrieved February 22, 2025, from <https://www.cricfit.co.uk/post/common-cricket-injuries-symptoms-causes-prevention-treatment>
- Cricket. (2025). In *Wikipedia*. <https://en.wikipedia.org/w/index.php?title=Cricket&oldid=1274740905>
- Dennis, R. J., Finch, C. F., Elliott, B. C., & Farhart, P. J. (2008). The reliability of musculoskeletal screening tests used in cricket. *Physical Therapy in Sport*, 9(1), 25–33. <https://doi.org/10.1016/j.ptsp.2007.09.004>

Felton, P., Shine, K., Yeadon, M., & King, M. (2024). THE EFFECT OF INCREASING ISOMETRIC STRENGTH ON TECHNIQUE DURING THE FRONT FOOT CONTACT PHASE IN ELITE CRICKET FAST BOWLERS. *ISBS Proceedings Archive*, 42(1), 271.

Forrest, M., Hecimovich, M., & Dempsey, A. (2016). Lumbopelvic muscle activation patterns in adolescent fast bowlers. *European Journal of Sport Science*, 16(6), 677–684.
<https://doi.org/10.1080/17461391.2015.1135985>

Forrest, M. R. L., Scott, B. R., Hebert, J. J., & Dempsey, A. R. (2018). Injury Prevention Strategies for Adolescent Cricket Pace Bowlers. *Sports Medicine (Auckland, N.Z.)*, 48(11), 2449–2461.
<https://doi.org/10.1007/s40279-018-0981-6>

Fox, K. T., Pearson, L. T., & Hicks, K. M. (2023). The effect of lower inter-limb asymmetries on athletic performance: A systematic review and meta-analysis. *PLOS ONE*, 18(6), e0286942.
<https://doi.org/10.1371/journal.pone.0286942>

Gamage, P. J., Fortington, L. V., & Finch, C. F. (2017). Perceived Injury Risk among Junior Cricketers: A Cross Sectional Survey. *International Journal of Environmental Research and Public Health*, 14(8), Article 8. <https://doi.org/10.3390/ijerph14080946>

Guan, Y., Bredin, S. S. D., Taunton, J., Jiang, Q., Wu, N., & Warburton, D. E. R. (2022). Association between Inter-Limb Asymmetries in Lower-Limb Functional Performance and Sport Injury: A Systematic Review of Prospective Cohort Studies. *Journal of Clinical Medicine*, 11(2), 360. <https://doi.org/10.3390/jcm11020360>

History of cricket. (2025). In *Wikipedia*.

https://en.wikipedia.org/w/index.php?title=History_of_cricket&oldid=1267100822

INJURY TYPES AND RATES IN AN INTERNATIONAL CRICKET TEAM: APPLICATION OF SUBSEQUENT INJURY CATEGORISATION | *British Journal of Sports Medicine*. (n.d.). Retrieved February 22, 2025, from https://bjsm.bmj.com/content/48/7/642.2?utm_source=chatgpt.com

Maloney, S. J. (2019). The Relationship Between Asymmetry and Athletic Performance: A Critical Review. *The Journal of Strength & Conditioning Research*, 33(9), 2579.

<https://doi.org/10.1519/JSC.0000000000002608>

Olivier, B., Lala, B., & Gillion, N. (2020). The cricketer's shoulder and injury: Asymmetries in range of movement and muscle length. *The South African Journal of Physiotherapy*, 76(1), 754.

<https://doi.org/10.4102/sajp.v76i1.754>

Orchard, J., Farhart, P., Kountouris, A., James, T., & Portus, M. (2010). Pace bowlers in cricket with history of lumbar stress fracture have increased risk of lower limb muscle strains, particularly calf strains. *Open Access Journal of Sports Medicine*, 1, 177–182.

<https://doi.org/10.2147/OAJSM.S10623>

Orchard, J., James, T., Kountouris, A., & Portus, M. (2010). Changes to injury profile (and recommended cricket injury definitions) based on the increased frequency of Twenty20 cricket matches. *Open Access Journal of Sports Medicine*, 1, 63–76.

Pardiwala, D. N., Rao, N. N., & Varshney, A. V. (2017). Injuries in Cricket. *Sports Health*, 10(3), 217–222. <https://doi.org/10.1177/1941738117732318>

(PDF) Prevalence of Contralateral Internal Oblique Strain in Recreational Fast Bowlers. (2024).

ResearchGate. <https://doi.org/10.24321/2278.2044.202309>

(PDF) Prevalence of Shoulder Impingement Syndrome and its Association with Bowling Style

among Fast Bowlers. (n.d.). *ResearchGate*. <https://doi.org/10.13140/RG.2.2.32632.46082>

(PDF) Shoulder rotator muscle imbalance in collegiate cricket bowlers: Measurement by Isokinetic Dynamometer at different angular velocities. (2024). *ResearchGate*.

<https://doi.org/10.1016/j.measen.2022.100556>

Portus, M., Mason, B. R., Elliott, B. C., Pfitzner, M. C., & Done, R. P. (2004). Technique factors related to ball release speed and trunk injuries in high performance cricket fast bowlers. *Sports Biomechanics*, 3(2), 263–284. <https://doi.org/10.1080/14763140408522845>

Consent Form for Participants



UoW HREC(Health)2024#65

Appendix C: Consent Form for Participants

Title: Investigating the effect of muscles strength asymmetric differences within bowlers in cricket

I have read the Participant Information Sheet and Assessment Tests Information sheet for this study and have had the details of the study explained to me. My questions about the study have been answered to my satisfaction, and I understand that I may ask further questions at any time. The tests will be held in Adams Centre, Tauranga and it will take 7 minutes to complete for each participant.

I also understand that:

- I am participating voluntarily without intimidation.
- I understand I can skip any question or activity.
- I am free to withdraw within two weeks, and my data will be withdrawn as well.
- Personal data will be destroyed after the study; de-identified data will be kept for five years per University of Waikato policy. Study data will contribute to a master's thesis, scientific publications, presentations, and educational efforts, with confidentiality maintained.
- I know who to contact if I have any questions or concerns about the study.
- I consent to participate in this study.

I agree to provide information to the researchers under the conditions of confidentiality set out on the Participant Information Sheet.

Consent to Participate

I agree to participate in this study under the conditions set out in the Participant Information Sheet.

Participant:

Researcher:

Signature:

Name:

Date:
