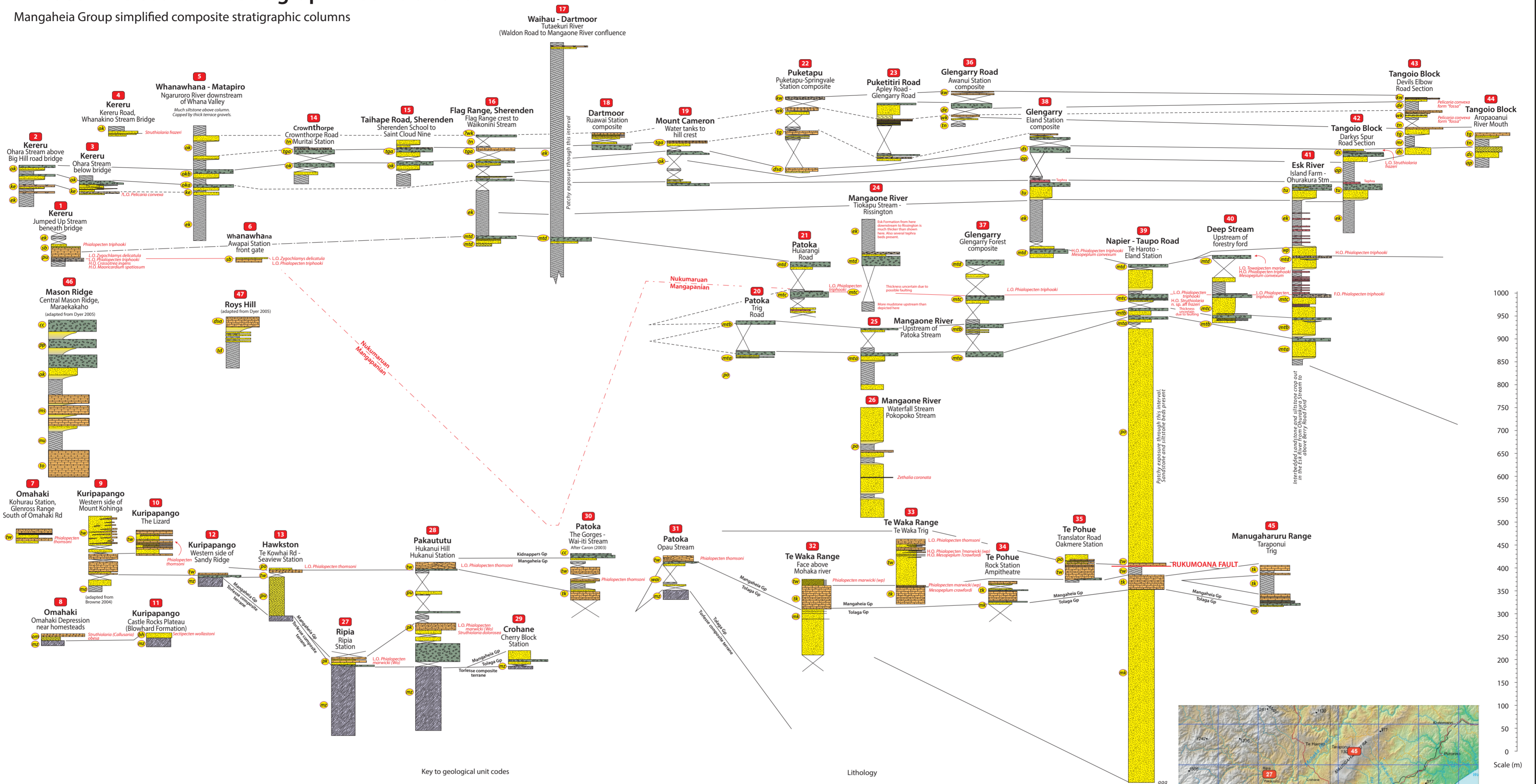


PR4883 Enclosure 2 - Stratigraphic Correlations

Mangaheia Group simplified composite stratigraphic columns



Key to geological unit codes

- | | | | |
|-----|--------------------------------|-----|---|
| cc | Kidnappers Group | td | Taradale Mudstone |
| pp | Poutaki Formation | wf | Waipunga Formation |
| ok | Okauawa Formation | mta | Grassy Knoll Conglomerate Member |
| okb | Whakamaruru Member | mtc | Papakiri Member |
| oka | Kikowhero Member | mtb | Trelinnoe Member |
| ke | Kereru Formation | mta | Deep Stream Member |
| sb | Sentry Box Formation | pw | Pohue Formation |
| kw | Kaiwaka Formation | tw | Te Waka Formation |
| de | Devils Elbow Mudstone Member | tk | Titokura Formation |
| wk | Waipatiki Limestone Member | mk | Mokonui Sandstone |
| tn | Te Ngaru Mudstone Member | pu | Puketitiri Formation |
| tga | Flag Range Conglomerate Member | pk | Pakaututu Formation |
| tg | Tangoio Limestone Member | mu | Mangatoro Formation |
| mr | Mairau Mudstone Member | bf | Blowhard Formation |
| dsl | Park Island Limestone Member | wa | Te Ipuhape Sandstone Member |
| ds | Darkys Spur Member | ms | Mason Ridge Formation |
| ap | Aropoanui Mudstone Member | mu | Makaretu Mudstone |
| tu | Tutira Member | to | Te Onepu Limestone |
| ek | Esk Mudstone | nz | Undifferentiated Torlesse composite terrane |

Lithology

- | | | | |
|----------|-----------------------|----------|------------------------|
| [Symbol] | Siltstone | [Symbol] | Sandy limestone |
| [Symbol] | Sandstone | [Symbol] | Shellbed |
| [Symbol] | Silty sandstone | [Symbol] | Pebbly limestone |
| [Symbol] | Calcareous sandstone | [Symbol] | Limestone |
| [Symbol] | Crossbedded Sandstone | [Symbol] | Cross-bedded limestone |
| [Symbol] | Conglomerate | [Symbol] | Volcaniclastic bed |
| [Symbol] | Shelly conglomerate | [Symbol] | Basement |

BIBLIOGRAPHIC REFERENCE

Bland, K.J. and Kamp, P.J.J. 2014: Hawke's Bay forearc basin (eastern North Island, New Zealand): Stratigraphy, biostratigraphy, chronology, geological maps and paleogeography. Ministry of Business, Innovation and Employment, New Zealand, unpublished Petroleum Report PR 4883, 66 p.

© Copyright: The University of Waikato, Hamilton, New Zealand

Enclosure 2
Stratigraphic Correlations
Mangaheia Group simplified composite stratigraphic columns

Kyle J. Bland* and Peter J.J. Kamp 2014

Bland, K.J. and Kamp, P.J.J. 2014: Hawke's Bay forearc basin (eastern North Island, New Zealand): Stratigraphy, biostratigraphy, chronology, geological maps and paleogeography. Ministry of Business, Innovation and Employment, New Zealand, unpublished Petroleum Report PR4883, 66 p.

The University of Waikato
* Current address: GNS Science

