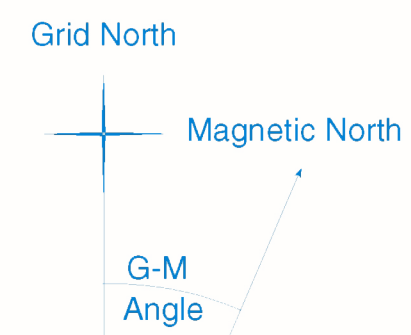


Topographic Legend

- ROADS**
- sealed.....
 - Road surface: sealed.....
 - metalled.....
 - unmetalled.....
 - Vehicle track.....
 - Foot track.....
 - National State Highway.....
- WATER FEATURES**
- River, stream.....
 - Riverbody.....
- RELIEF FEATURES**
- Index contour.....
 - Intermediate contour.....
 - Trig station beacons; unbeacons.....
 - Elevation in metres..... 100 & 100 m
 - Cliff, terrace.....
- MISCELLANEOUS**
- Large buildings.....
 - Residential area.....
 - Building.....
 - Homestead.....
 - Airship.....
 - Mine; underground opencast.....
- CULTURAL FEATURES**
- Localities (over 200)
 - Localities (under 200)
 - Homesteads
 - Miscellaneous features and descriptive notes
 - Airmp
 - ROAD AND RAILWAY NAMES
 - TRACK NAMES
 - Trig identification numbers and names



MAGNETIC NORTH on this map is 23.5° (41 km/hr) EAST of GRID NORTH during 1987, increasing at a rate of approx 1.2° (19 m/hr) every 8 years.

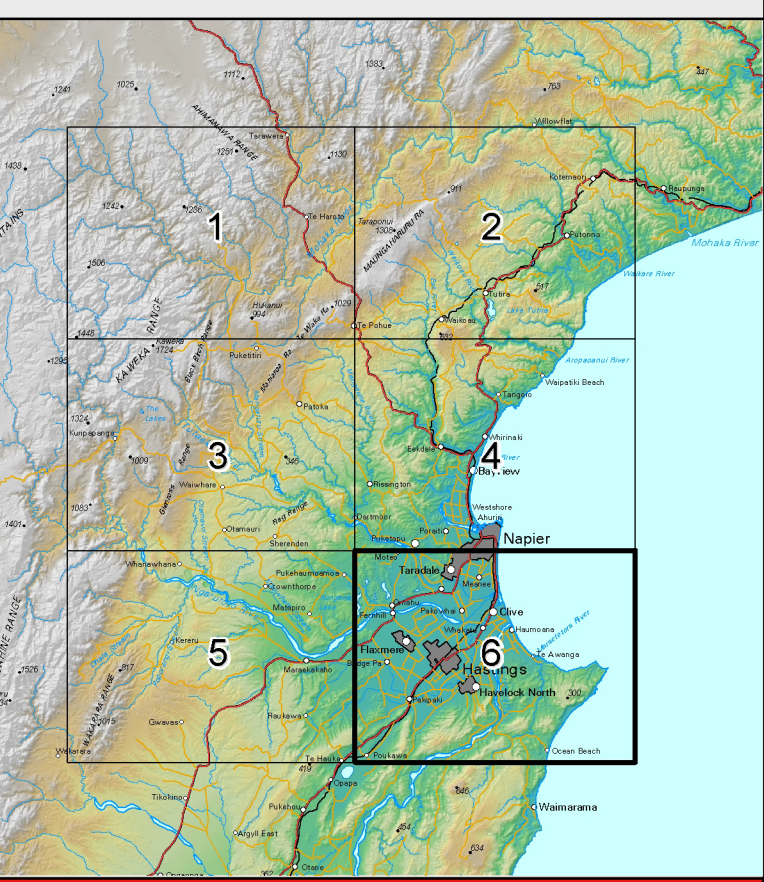
This map is drawn on the New Zealand Map Grid Projection, a minimum error conformal projection. The grid is the New Zealand map grid, showing coordinates in metres in terms of the Geodesic Datum 1949, based on the International (Hayford) Spheroid.

TO GIVE A GRID REFERENCE ON THIS MAP (to nearest 100 metres)			
Disregard the number of grid numbers			
SAMPLE POINT: Feet			
East	West	North	South
Locate first VERTICAL grid line to LEFT of point and read figure labelling the line within the top or bottom margin or across the centre of the map.	Locate first HORIZONTAL grid line to BELOW of point and read figure labelling the line within the left or right margin or up the centre of the map.	Estimate tenths eastward from grid line to point.	Estimate tenths northward from grid line to point.
3	4	1	2

SAMPLE REFERENCE (Grid sheet number) V29 043852

The topography on this map is taken from the LINZ CD Rom 1:50 000 Topographic Vector Data Set. Note that this map covers all or part of topographic sheets NZ85 260 U21 Kereri and V21 Napier.

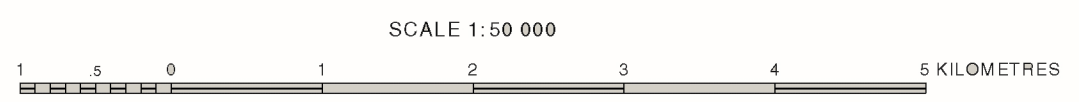
THE VERTICAL INTERVAL BETWEEN THE CONTOURS IS 20 METRES. HEIGHTS ARE ABOVE MEAN SEA LEVEL.



Bland, K.J., and Kamp, P.J.J. 2014; Hawke's Bay forearc basin (eastern North Island, New Zealand): Stratigraphy, biostratigraphy, chronology, geological maps and paleogeography. Ministry of Business, Innovation and Employment, New Zealand, unpublished Petroleum Report PR4883, 66 p.

Department of Earth and Ocean Sciences
University of Waikato

* Current address: GNS Science



BIBLIOGRAPHIC REFERENCE

Bland, K.J. and Kamp, P.J.J. 2014; Hawke's Bay forearc basin (eastern North Island, New Zealand): Stratigraphy, biostratigraphy, chronology, geological maps and paleogeography. Ministry of Business, Innovation and Employment, New Zealand, unpublished Petroleum Report PR4883, 66 p.