



# Kai Whakakitenganui o Te Whakatōhea

## Whenua planning for kai security

**Dr Shannon Davis, Professor Te Kahautu Maxwell, Hope Hata and Dr Richard Morris**  
Tuia Pito Ora New Zealand Institute of Landscape Architecture | 2025 Wānanga Horanuku Hora Kai  
Toitōi Hawke's Bay Arts + Events Centre  
May 22-23, 2025



**Whakatōhea**  
Māori Trust Board



**LINCOLN**  
UNIVERSITY

TE WHARE WĀNAKA O AORAKI

# Tohe Ora Wānaga Whenua - Our Partnership





# “Ko Te Kai Hoki I Waiaua”

(A whakatauaikī (proverb) by a Te Whakatōhea ancestor, Tapuikaakahu)

## A Whakatōhea Kai Strategy



"Reminds me of the old people, a time when life was much simpler"

"WHEN WE WERE LIVING OFF THE LAND MY KIDS HEALTH WAS AT IT'S BEST"

"IT'S MANAAKITANGA"

"WE ARE WELL SPIRITUALLY WHEN WE ARE LOOKING AFTER THE WHENUA THAT LOOKS AFTER US"

"We knew where everything we ate came from"

"I GET TO SPEND TIME WITH MY WHĀNAU DOWN THE COAST DOING WHAT WE LOVE, MAHINGA KAI"

"IT'S NOT THE SAME, THERE IS SO MUCH FOOD ALLERGIES"

"learning to grow food gives you so many skills"

"KAI TO ME IS ABOUT THE MEMORIES WE CREATE TOGETHER"



Whakatōhea  
Māori Trust Board



LINCOLN  
UNIVERSITY  
TE WHARE WĀNAKA O AORAKI

# The Vision



*“ To exercise  
Tino Rangatiratanga  
in our pursuit to define our  
local food systems  
through the traditional  
knowledge  
and practice of  
growing kai that will  
inspire and transform  
the health and well-being  
of all Whakatōhea,  
Whānau, Hapū, Iwi. ”*



# Ā Mātou Tikanga - Our Process



*E hika, Waiū e!*

*I tīpokina te tipuaki*

*Ki te tūpuku karaka;*

*Nō reira te ingoa o Te Oro-karaka.*

*Whakaūria Ngāi Tamahaua*

*Ki te ika i te moana*

*Ki te ngohi rā tēnā*

*I hīa ai kia Tauhe;*

*Nā Taha-manawa i kawē*

*Ki Mou-tohorā.*

*Tēnei hikitia, i komotia ki roto*

*Ki te kōpiha kumara nā Te Peka-whati,*

*Ā he pirau taro tea ohia ana mai ki waho rā ...*

*O sire Wai!*

*Your head was covered*

*With a kitful of cooked karaka*

*Hence the name Te Oro-karaka.*

*Ngāi Tamahaua were fed*

*Fish from the sea*

*With fish*

*From the fishing of Tauhe*

*Which was taken by Taha-manawa*

*To Mou-tohorā*

*It was lifted up and placed inside*

*The kumara pit of Peka-whati*

*But all that came forth was rotten taro ...*

**(A Te Whakatōhea mōteatea (archaic song))**



**Whakatōhea**  
Māori Trust Board



**LINCOLN**  
UNIVERSITY  
TE WHARE WĀNAKA O AORAKI

# 1 Te Kimihanga - Empathise

# 1 empathise

- *Whakatōhea Māori Trust Board*
- *Kaumātua mātauranga Te Whakatōhea*
- *Walking the whenua*
- *Mōteatea study*
- *Whakapapa of te taiao*



**Whakatōhea**  
Māori Trust Board



**LINCOLN**  
UNIVERSITY

TE WHARE WĀNAKA O AORAKI

# 2 Te Whakaaetanga - Define

1 empathise

2 define

- Te Whakatōhea Māori Trust Board
- Kaumātua kōrero
- Te Whakatōhea whānau



Whakatōhea  
Māori Trust Board



LINCOLN  
UNIVERSITY  
TE WHARE WĀNAKA O AORAKI

# 3 Te Wānanga - Ideate



1 empathise

2 define

3 ideate

- *Wānanga series*
- *2x spatial scales*
- *2x temporal scales*

# 4 Te Tauira - Prototype

Māra-ā-kainga



Māra-ā-papakāinga



Māra-ā-iwi



1 empathise

2 define

3 ideate

4 prototype



Whakatōhea  
Māori Trust Board

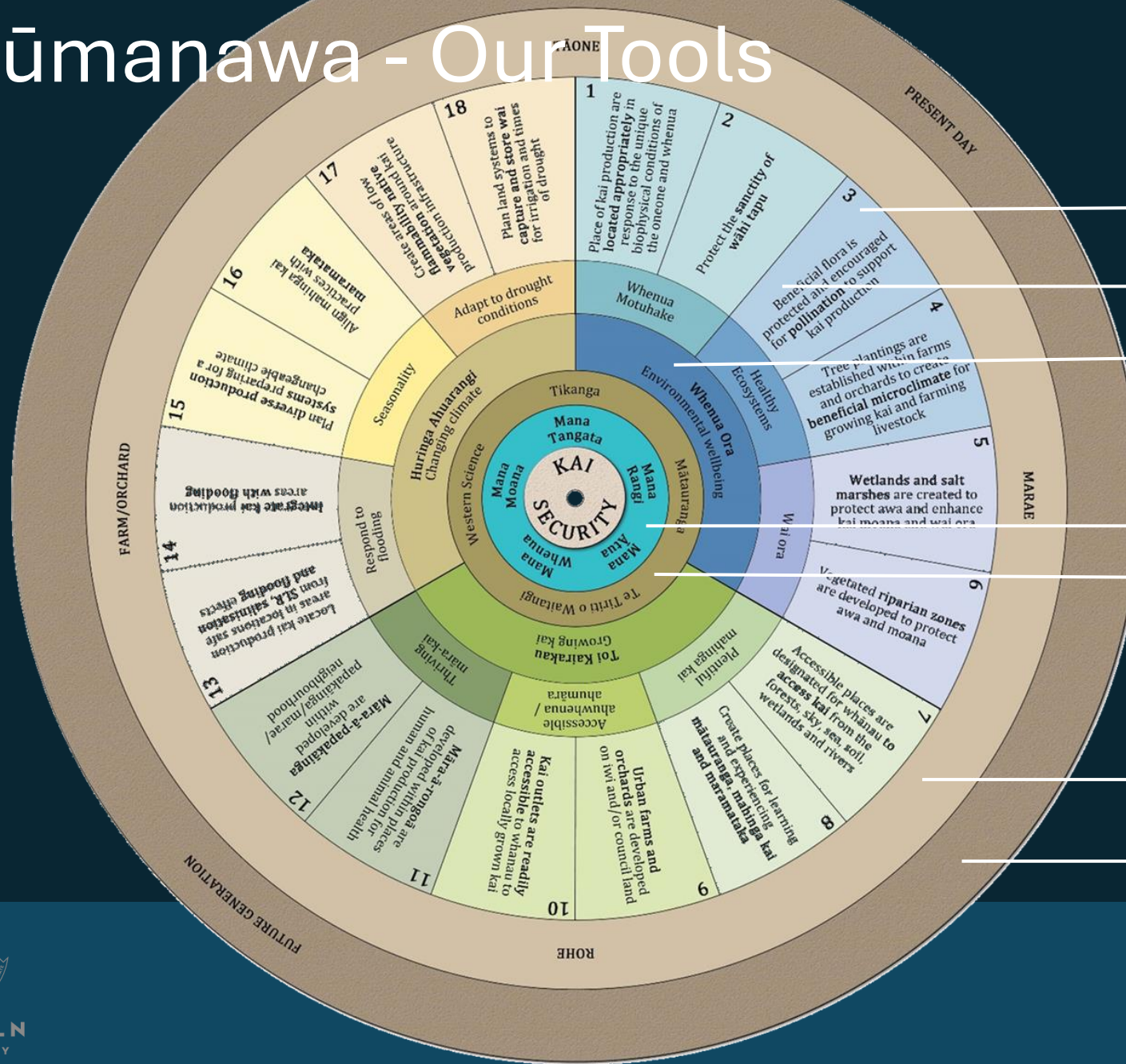


LINCOLN  
UNIVERSITY  
TE WHARE WĀNAKA O AORAKI





# Ngā Pūmanawa - Our Tools



Targeted objectives

Interconnected goals

Focus principles

Underpinned by tikanga

Multiple knowledges

Spatial scale

Temporal scale

Kai Security  
Kāpehu/Compass  
kōrero tool



Whakatōhea  
Māori Trust Board

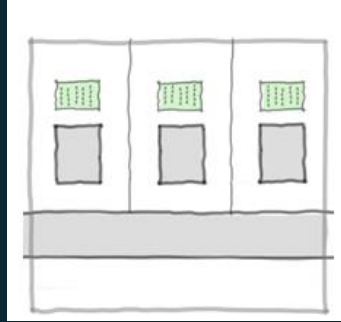


LINCOLN  
UNIVERSITY  
TE WHARE WĀNAKA O AORAKI



# Ngā Kitenga - Our Findings

**Māra-ā-kainga**  
Home garden



**Pāpāringa o te awa**  
River edge



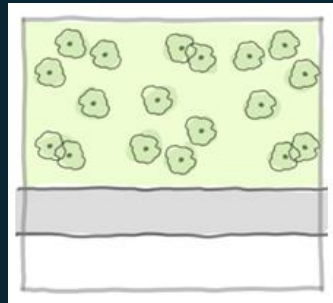
**Uru rākau**  
Pockets of ngāhere



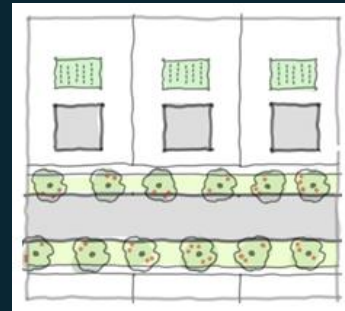
**Kōhatū awa**  
River gravel



**Pirau whenua**  
contaminated land



**Huarākau**  
Street trees



**Māra-ā-paerewa**  
Raised beds



**Muriwai-Repo**  
Wetland/stormwater  
attenuation



**Whakatōhea**  
Māori Trust Board

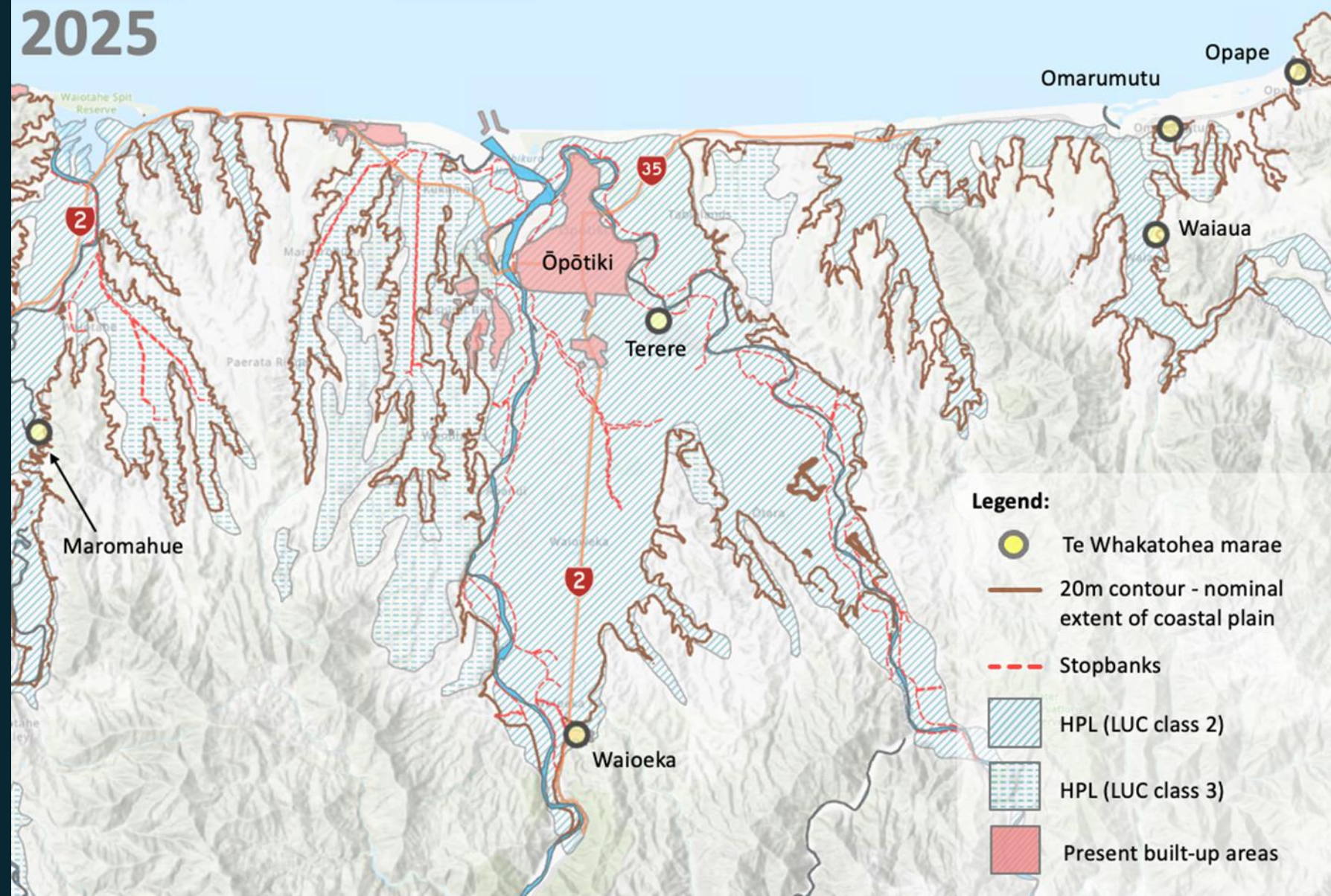


**LINCOLN**  
UNIVERSITY  
TE WHARE WĀNAKA O AORAKI



# Ngā Kitenga - Our Findings

2025



Whakatōhea  
Māori Trust Board

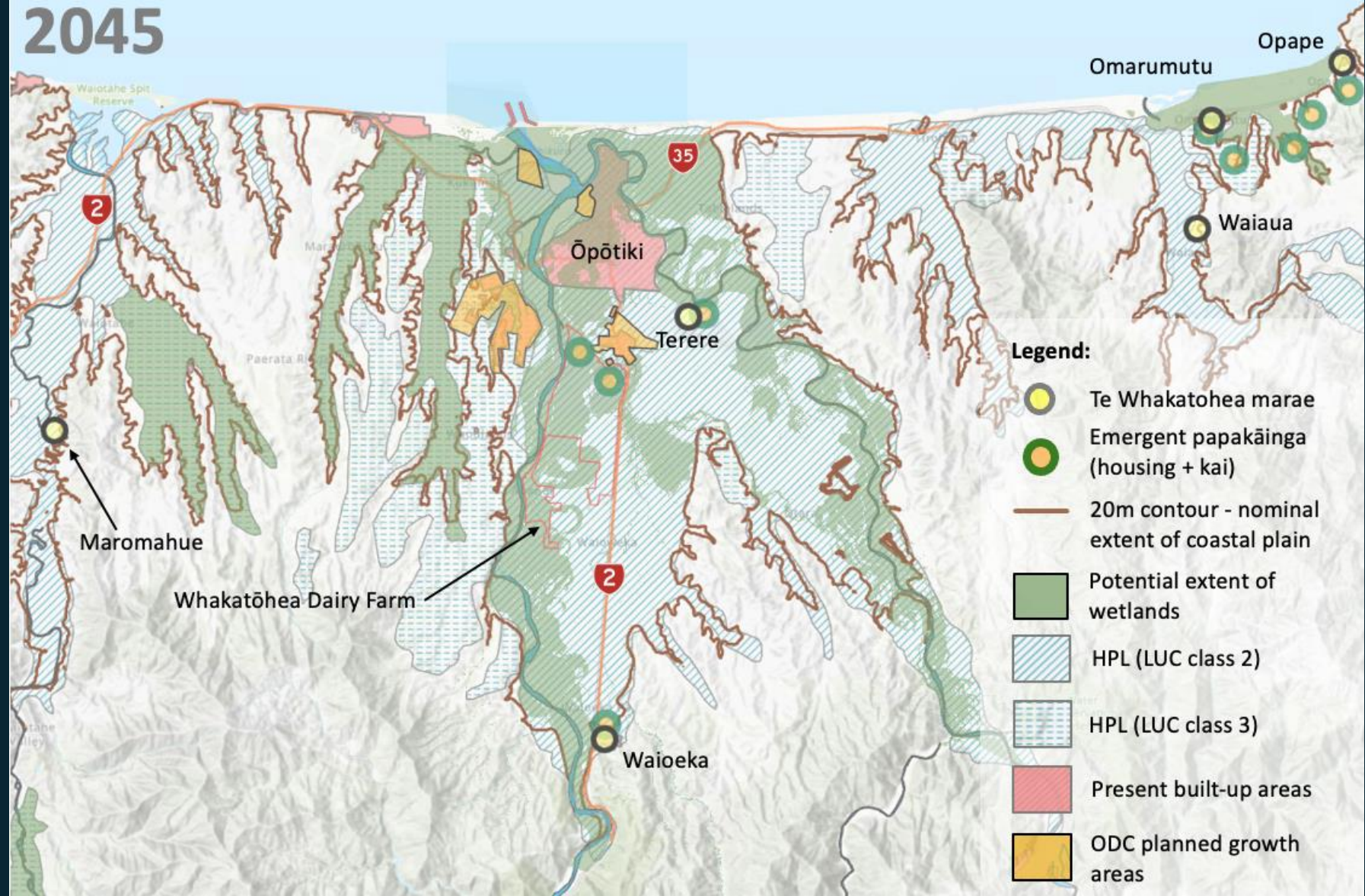


LINCOLN  
UNIVERSITY  
TE WHARE WĀNAKA O AORAKI



# Ngā Kitenga - Our Findings

2045



Whakatōhea  
Māori Trust Board



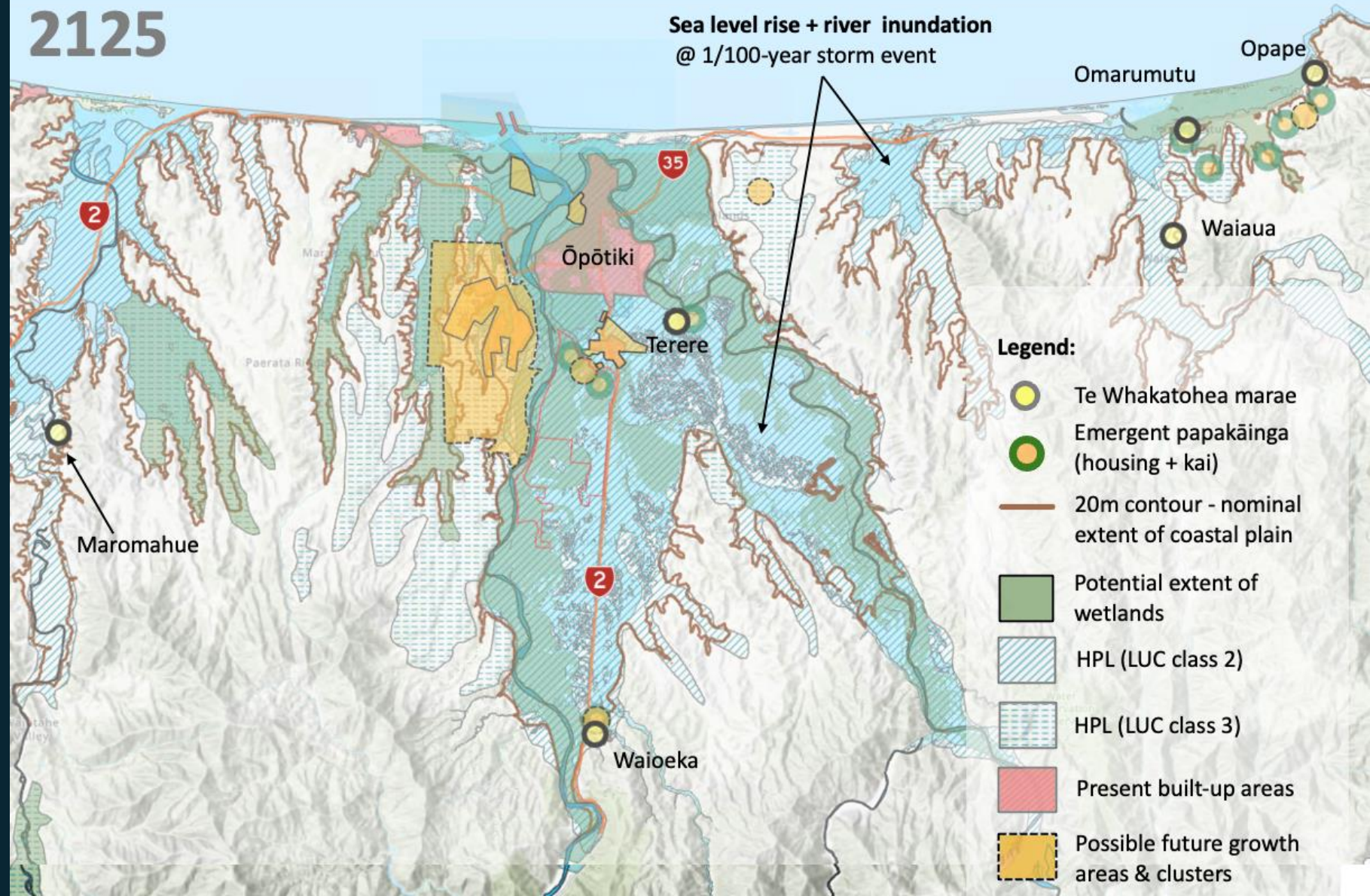
LINCOLN  
UNIVERSITY  
TE WHARE WĀNAKA O AORAKI



# Ngā Kitenga - Our Findings

2125

Sea level rise + river inundation  
@ 1/100-year storm event



Whakatōhea  
Māori Trust Board

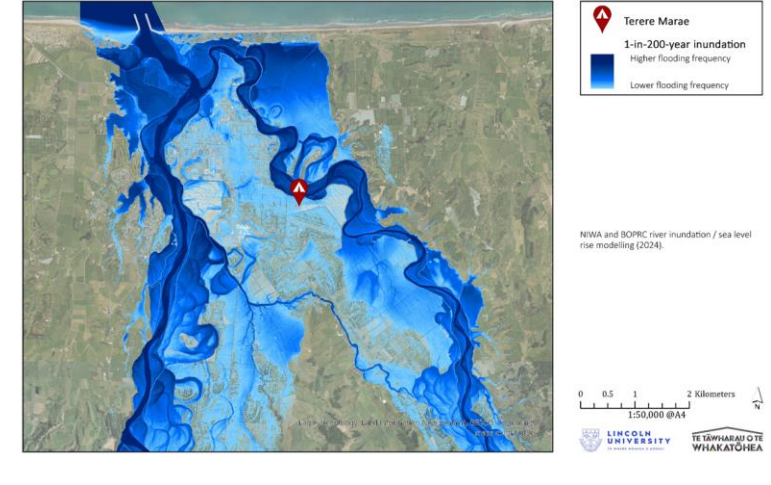


LINCOLN  
UNIVERSITY  
TE WHARE WĀNAKA O AORAKI

# Āpōpō - What's next?



Spatial extent of flooding on Ōpōtiki and surrounding kai growing whenua. 1 in 200 year rainfall event



Whakatōhea  
Māori Trust Board



LINCOLN  
UNIVERSITY  
TE WHARE WĀNAKA O AORAKI

# Ngā mihi - Acknowledgements



Te Whakatōhea Māori Trust Board – Te Tāwharau o Te Whakatōhea  
Te Taumata Kaumātua o Te Whakatōhea  
Wānanga Contributors/Community Gardeners  
Robert Edwards (Chair Te Whakatōhea Trust Board)  
Graeme (Paki) Reisterer (Te Whakatōhea Trust Board)  
Danie Poihipi (Kaumātua o Te Whakatōhea, Te Whānau ā Apanui)  
Huikau Rata (Researcher Te Whakatōhea, Te Whānau ā Apanui, Ngāi Tai, Kai Tahu)  
Dickie Farrar (CEO Whakatōhea Māori Trust Board)  
Danny Paruru (Iwi Development Manager Whakatōhea Māori Trust Board)  
Hope Hata (Te Whakatōhea Research Coordinator)  
Te Kahautu Maxwell (Te Whakatōhea Trust Board, University of Waikato)  
Roger Rakuraku (Te Whakatōhea, Te Wānanga o Aotearoa)

Te Whare Wānaka o Aoraki Lincoln University

Centre of Excellence: Designing Future Productive Landscapes

Pablo Gregorini (Head of Centre of Excellence: Designing Future Productive Landscapes)  
Shannon Davis (School of Landscape Architecture)  
Richard Morris (Faculty of Agriculture and Life Science)  
Charles (Merf) Merfield (Merfield Aronomy Ltd)  
Isobel Happy (School of Landscape Architecture)  
Hanley Chen (School of Landscape Architecture)  
Ben Ormsby (School of Landscape Architecture)

