

Topographic Legend

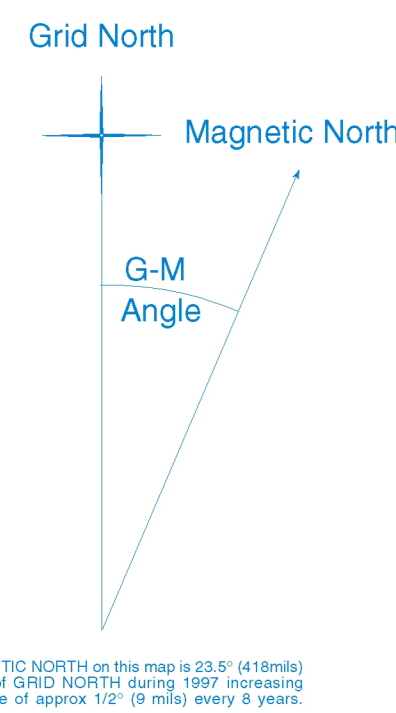
- ROADS**
- sealed
 - Road surface:
 - metalled
 - unmetalled
 - Vehicle track
 - Foot track
 - National State Highway

- WATER FEATURES**
- River, stream
 - Riverbody

- RELIEF FEATURES**
- Index contour
 - Intermediate contour
 - Triangulation station beacons; unbeacons
 - Elevation in metres: 100 m, 150 m
 - Cliff, terrace

- MISCELLANEOUS**
- Large buildings
 - Residential area
 - Building
 - Homesite
 - Airstrip
 - Mine, underground, opencast

- CULTURAL FEATURES**
- Localities (over 200)
 - Localities (under 200)
 - Homesites
 - Miscellaneous features and descriptive notes
 - Anote
 - ROAD AND RAILWAY NAMES
 - TRACK NAMES
 - Triangulation identification numbers and names



This map is drawn on the New Zealand Map Grid Projection, a minimum error conformal projection. The grid is the New Zealand map grid, showing coordinates in metres in terms of the Geodesic Datum 1949, based on the International Spheroid.

TO GIVE A GRID REFERENCE ON THIS MAP
(To nearest 100 metres)
Disregard the smaller figures of corner grid numbers. They are for fixing 500 coordinates.

SAMPLE POINT: East		SAMPLE POINT: West	
1. Locate the VERTICAL grid line to LEFT of point and read figure labelling the line in either the top or bottom margin or across the centre of the map.	04	1. Locate the HORIZONTAL grid line to BELOW of point and read figure labelling the line in either the left or right margin or up the centre of the map.	85
2. Estimate tenths eastward from grid line to point.	3	2. Estimate tenths northward from grid line to point.	2

SAMPLE REFERENCE (Quote sheet number first): V20 043852

The topography on this map is taken from the LINZ CD Rom 1:50 000 Topographic Vector Data Set. Note that this map covers all or part of topographic sheets NZMS 260 U21 Kereru and V21 Napier.

THE VERTICAL INTERVAL BETWEEN THE CONTOURS IS 20 METRES
HEIGHTS ARE ABOVE MEAN SEA LEVEL

PR4883 ENCLOSURE 4 - SHEET 4 ESK

Geological Map Sheet 4

Enclosure 4 Esk 1:50000

Kyle J. Bland* and Peter J.J. Kamp 2014

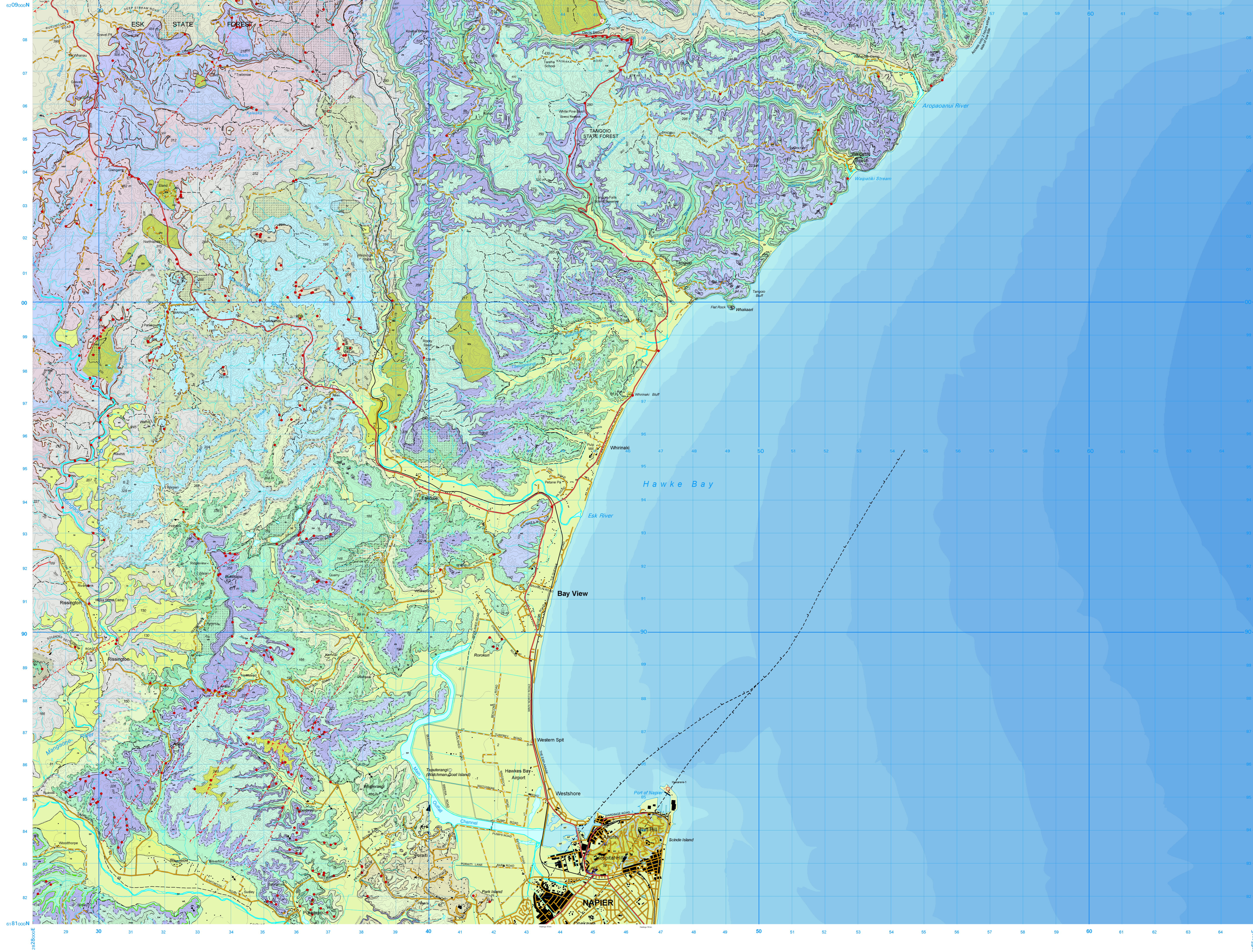
Bland, K.J. and Kamp, P.J.J. 2014: Hawke's Bay forearc basin (eastern North Island, New Zealand): Stratigraphy, biostratigraphy, chronology, geological maps and paleogeology. Ministry of Business, Innovation and Employment, New Zealand, unpublished Petroleum Report PR4883, 66 p.

Department of Earth and Ocean Sciences
University of Waikato

* Current address: GNS Science



THE UNIVERSITY OF WAIKATO
161 Rutherford Avenue, Hamilton, New Zealand



SCALE 1:50 000
0 1 2 3 4 5 KILOMETRES

BIBLIOGRAPHIC REFERENCE

Bland, K.J. and Kamp, P.J.J. 2014: Hawke's Bay forearc basin (eastern North Island, New Zealand): Stratigraphy, biostratigraphy, chronology, geological maps and paleogeography. Ministry of Business, Innovation and Employment, New Zealand, unpublished Petroleum Report PR4883, 66 p.