
Appendix 1

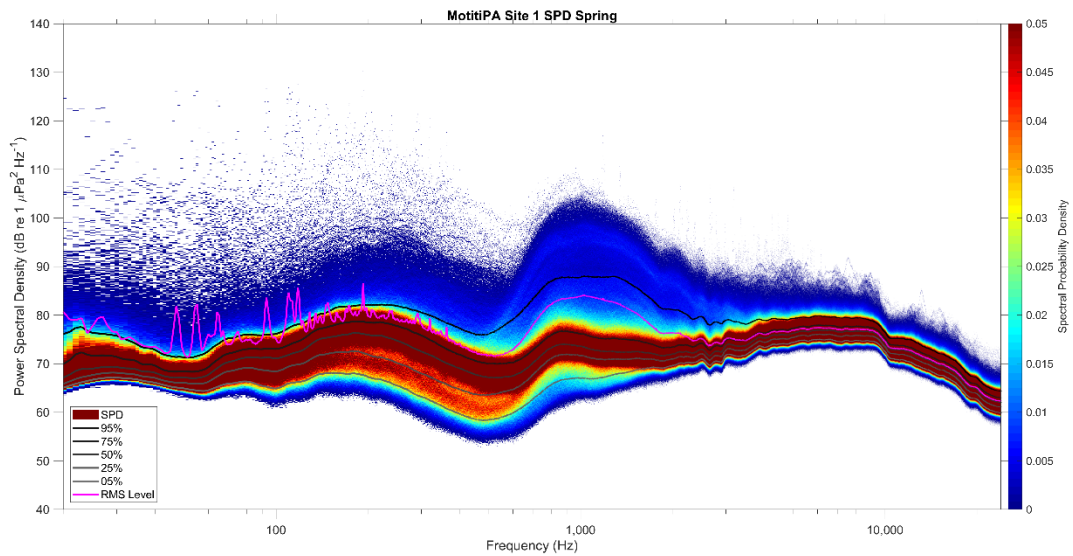
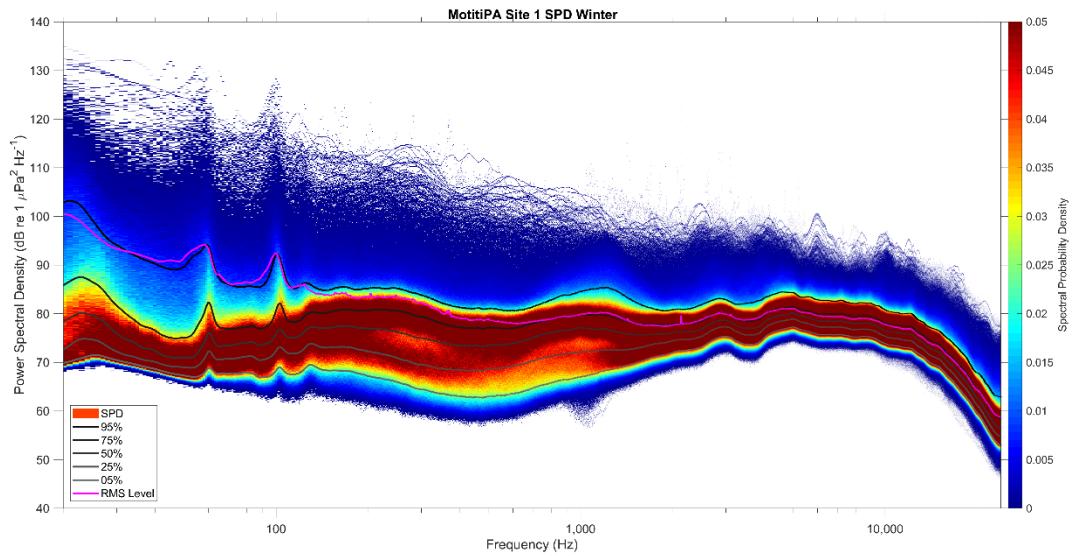
This appendix contains the raw data for Chapter 3:

Spectral Probably Density (Figures A1 – A5) – data referenced in section 3.1.2

Three-day (72 h) LTSAs (Figures A6 – L26) – data referenced in section 3.2.3

Spectral Probability Density

Site 1



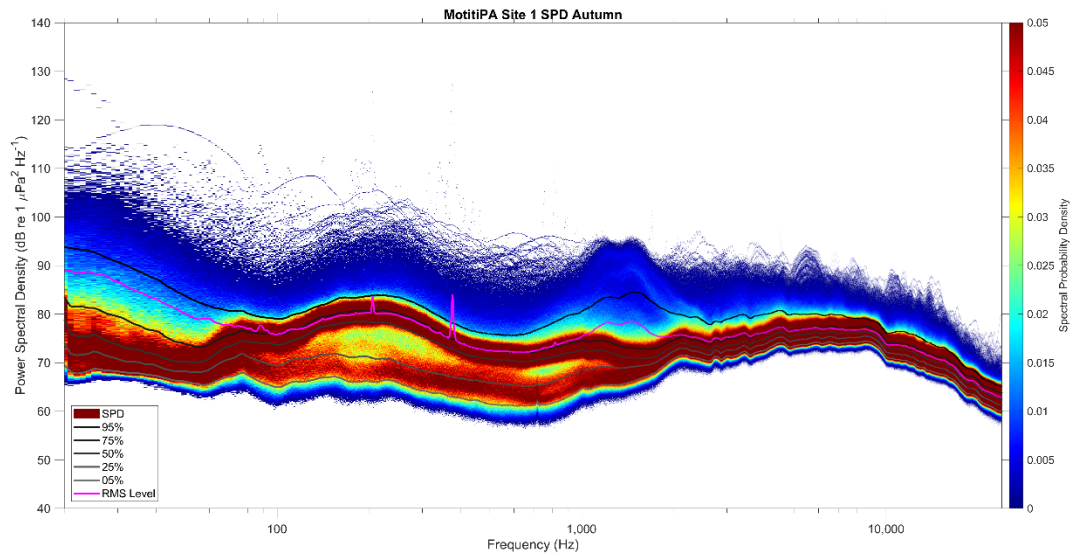
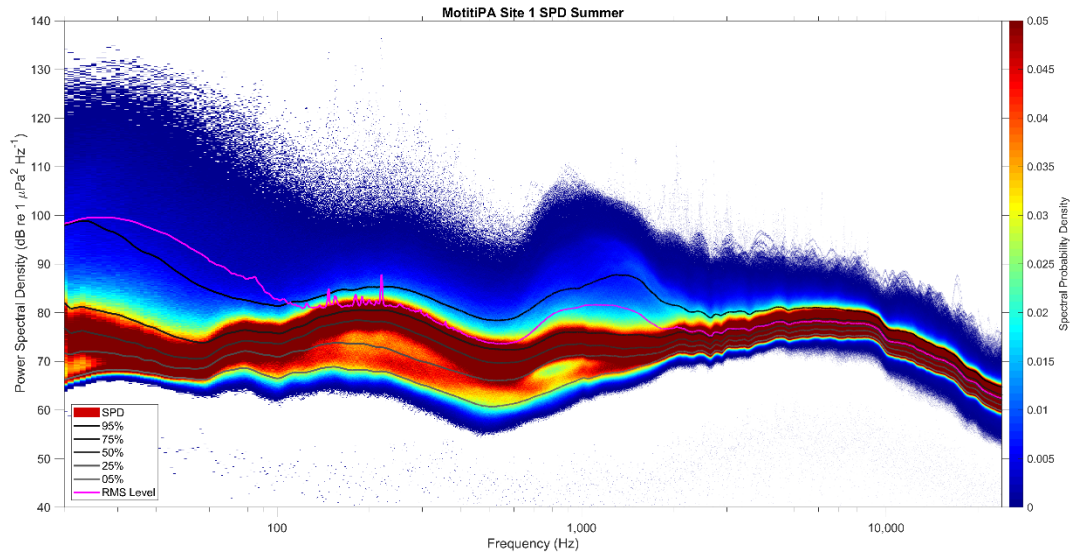
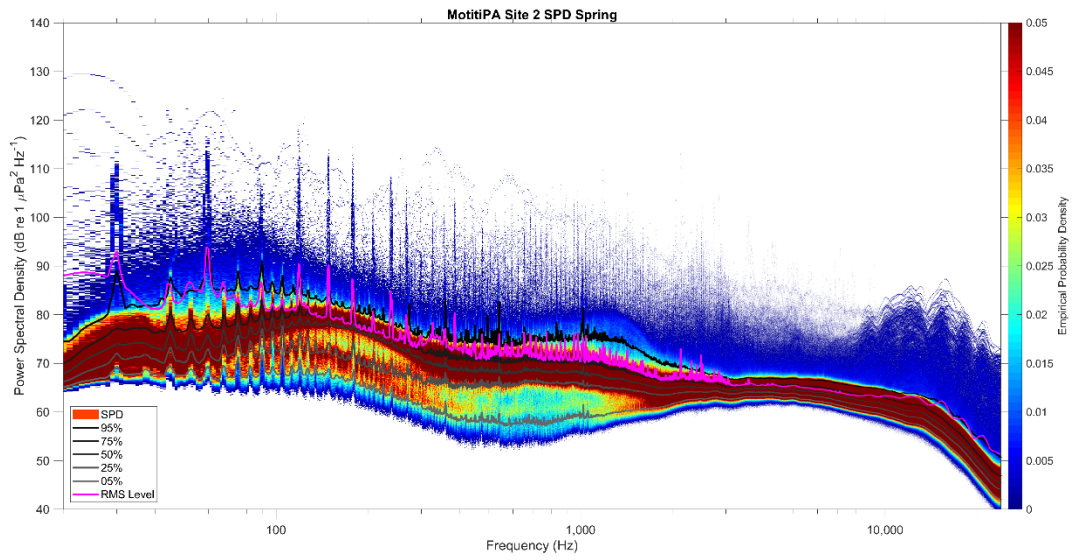
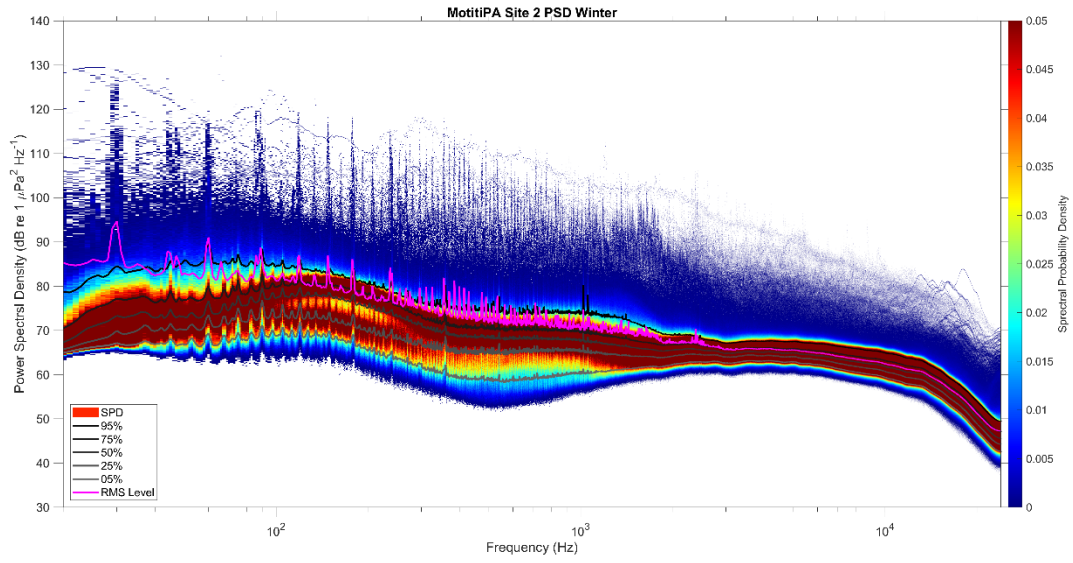


Figure A1. Spectral probability density for Site 1. a) Winter seasonal recording period, b) Spring seasonal recording period, c) Summer seasonal recording period, and d) Autumn seasonal recording period.

Site 2



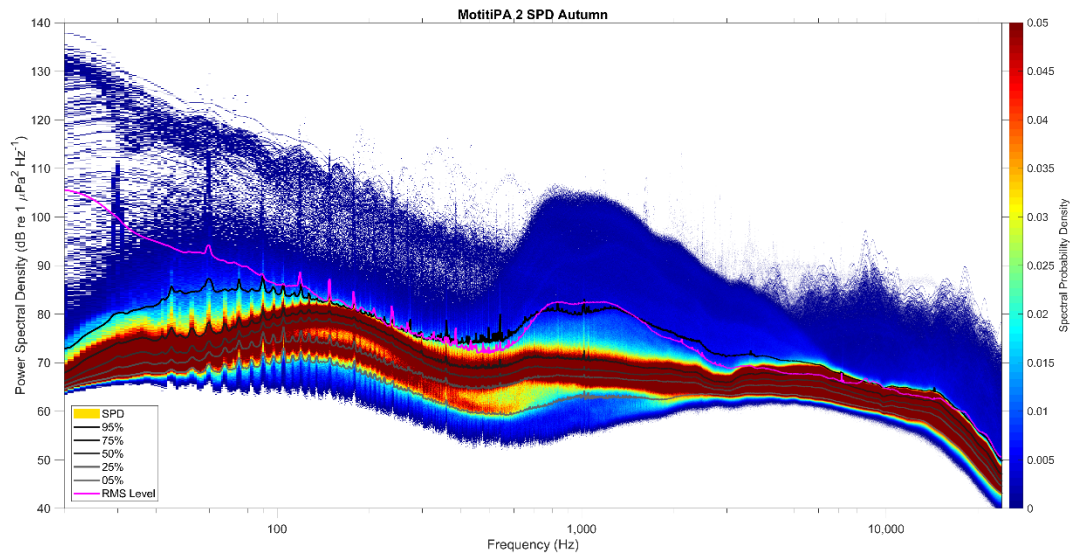
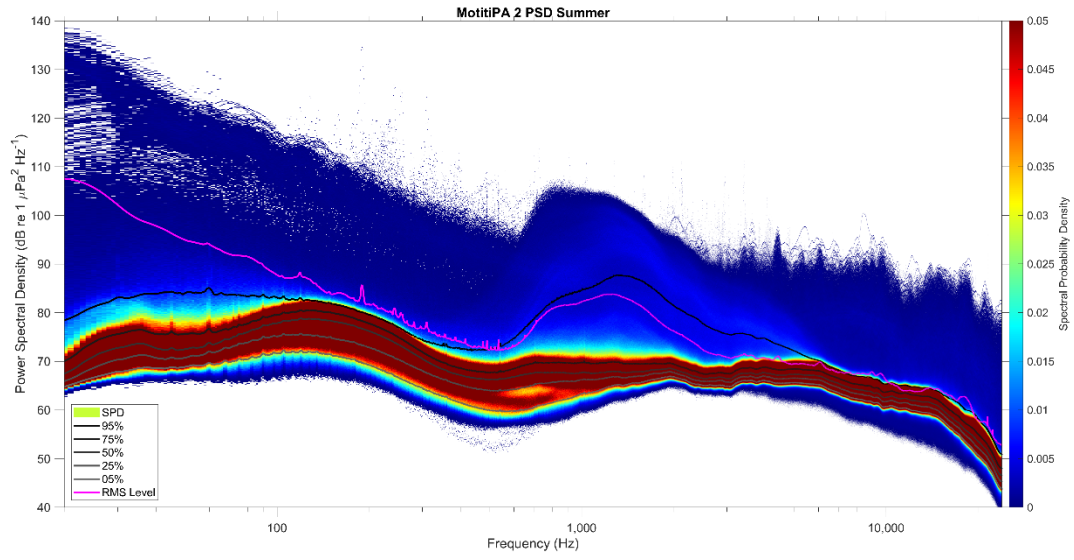
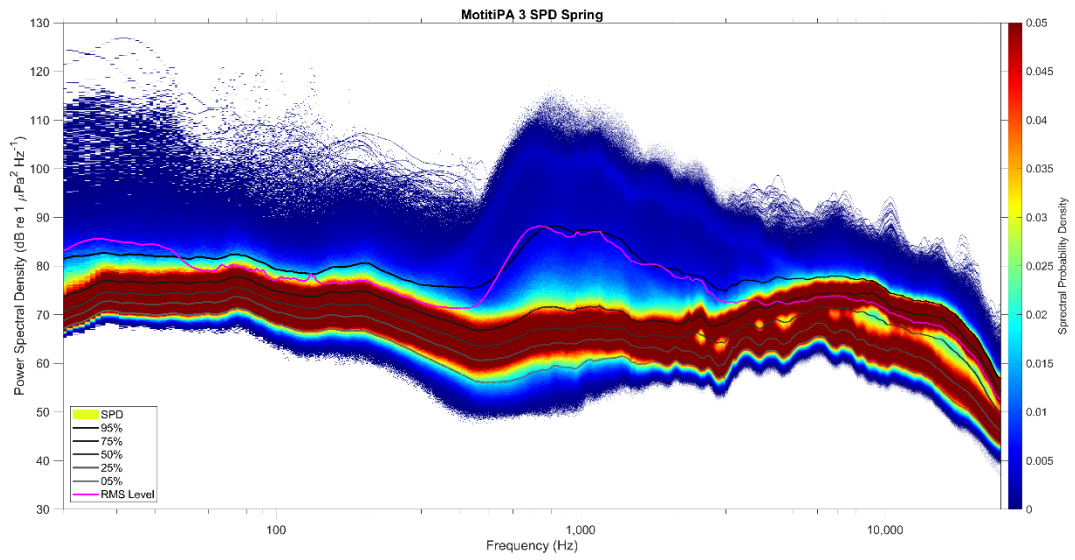
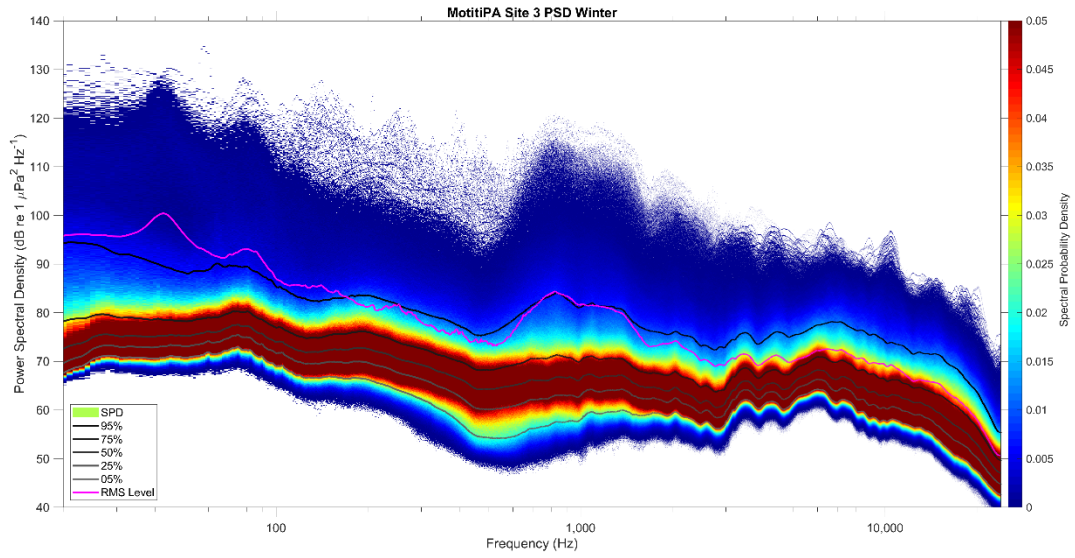


Figure A2. Spectral probability density for Site 2. a) Winter seasonal recording period, b) Spring seasonal recording period, c) Summer seasonal recording period, and d) Autumn seasonal recording period.

Site 3



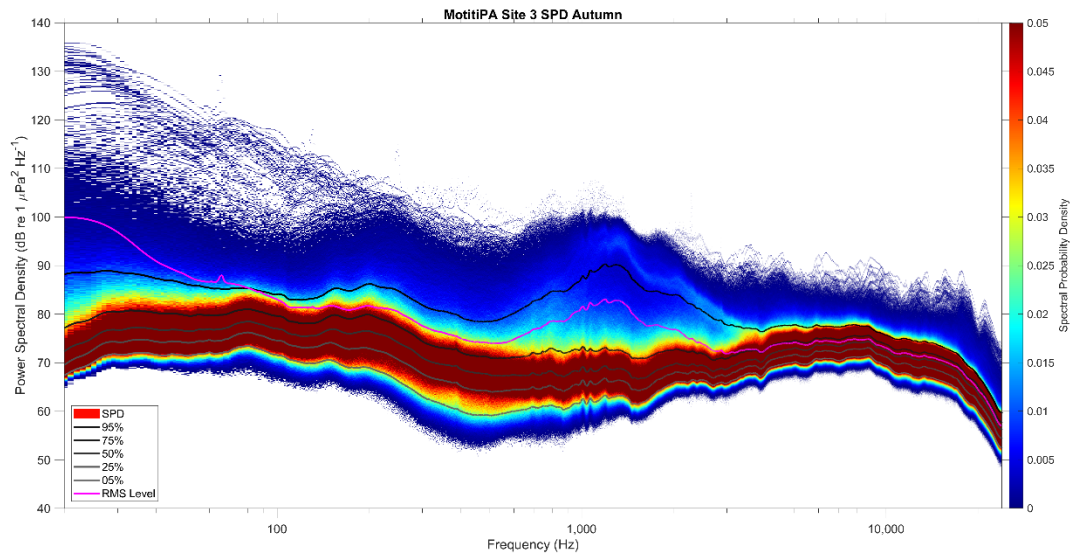
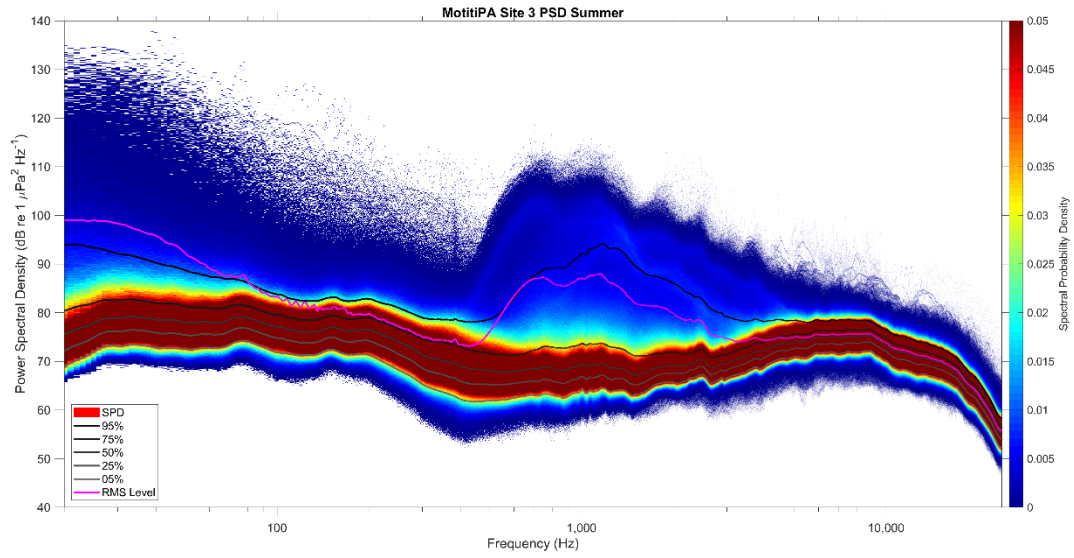
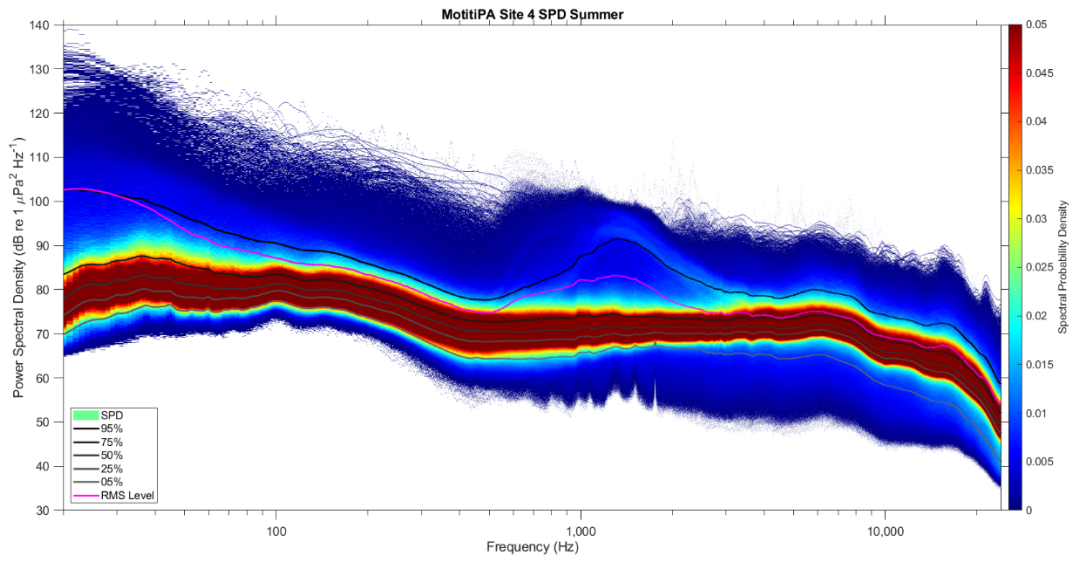
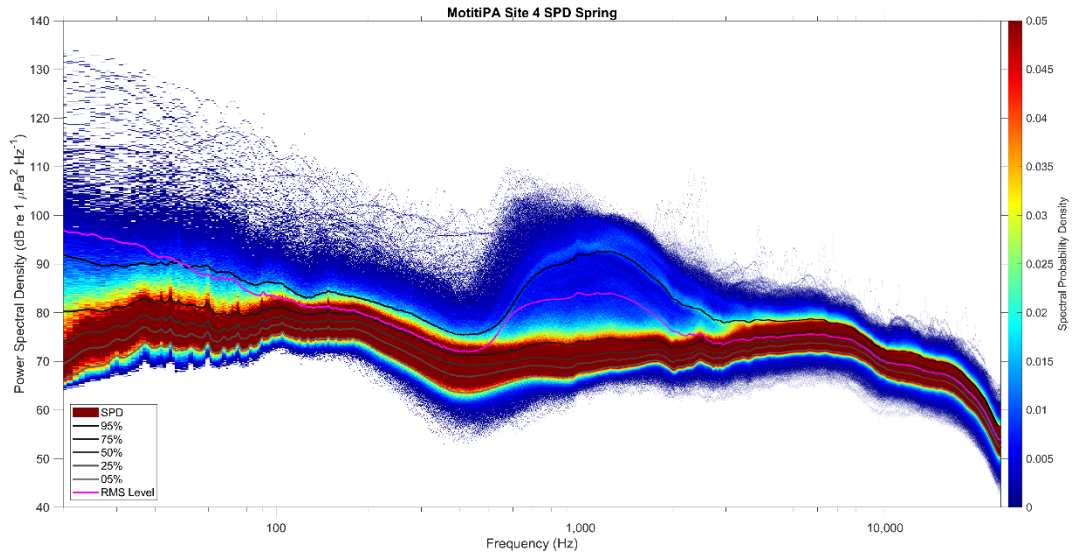


Figure A3. Spectral probability density for Site 3. a) Winter seasonal recording period, b) Spring seasonal recording period, c) Summer seasonal recording period, and d) Autumn seasonal recording period.

Site 4



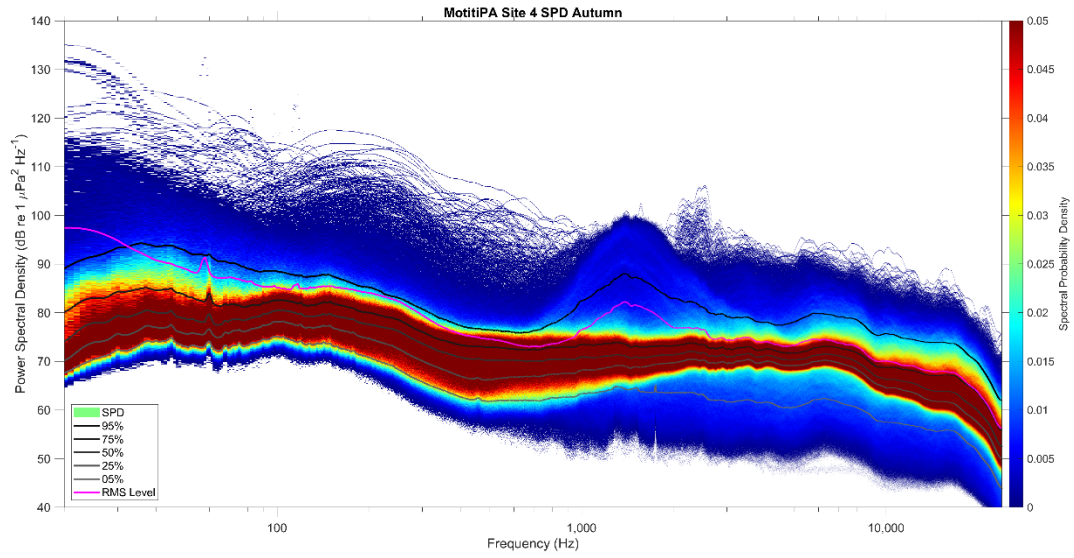
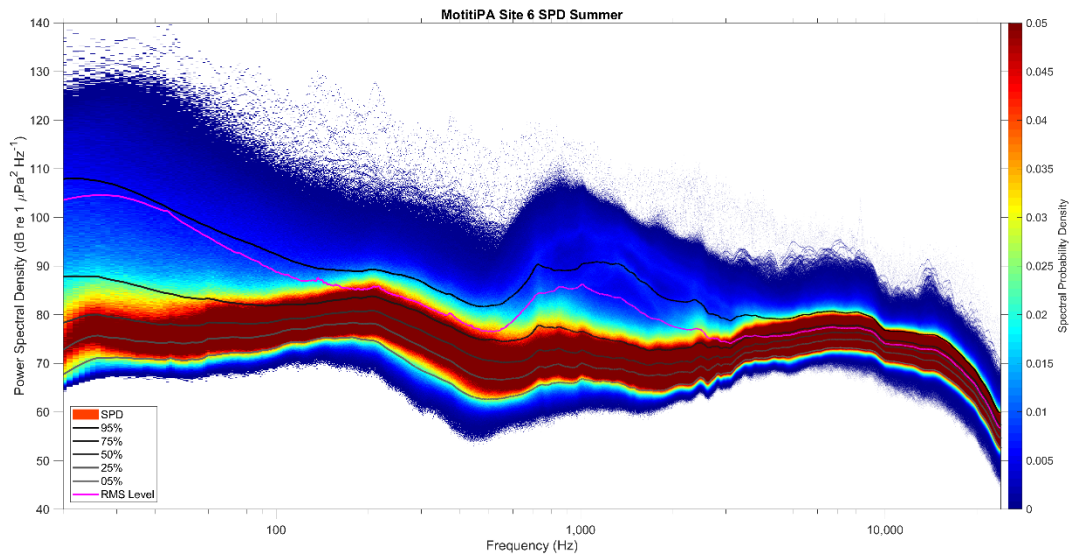
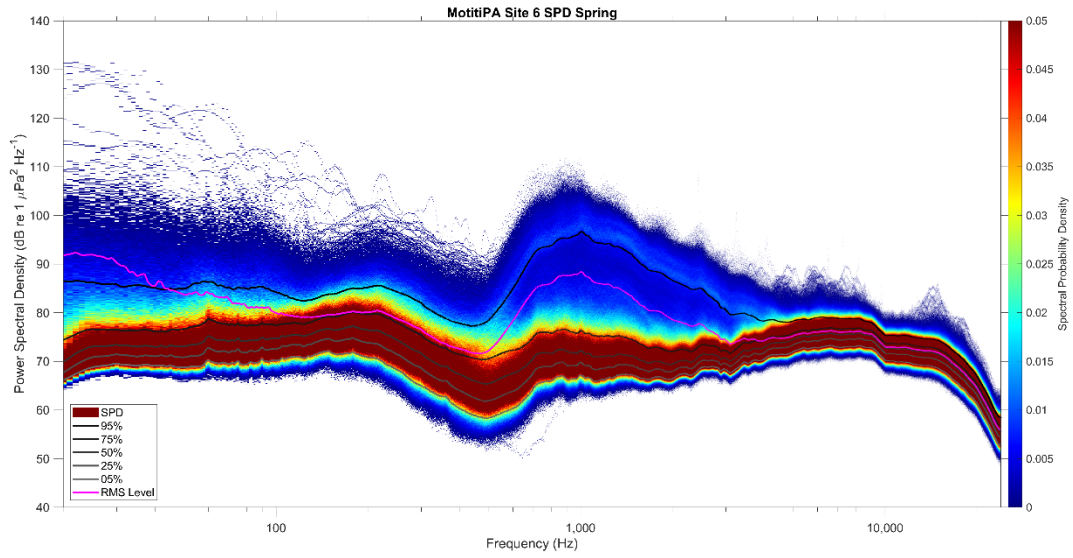


Figure A4. Spectral probability density for Site 4. a) Spring seasonal recording period, b) Summer seasonal recording period, and c) Autumn seasonal recording period.

Site 6



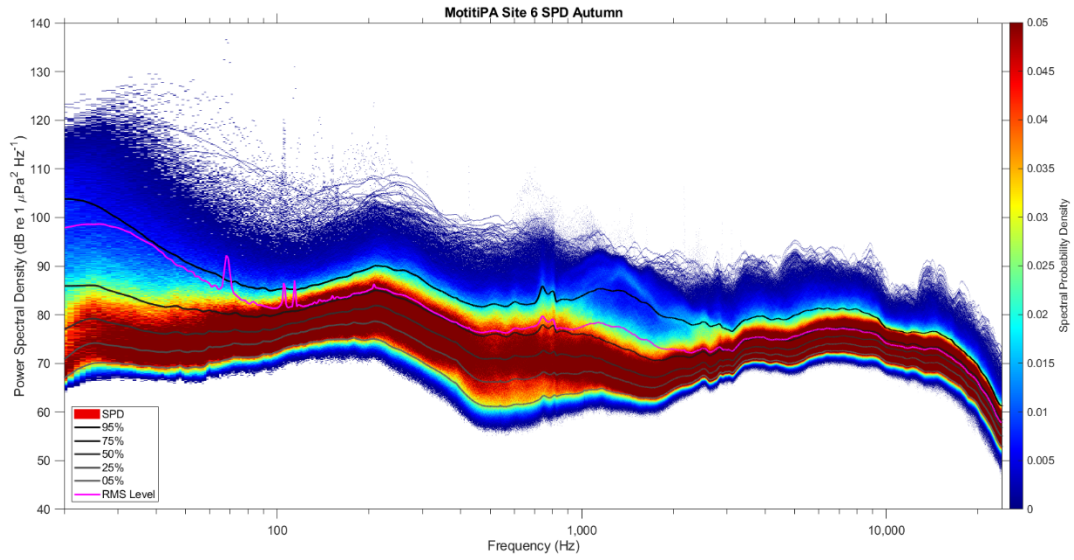


Figure A5. Spectral probability density for Site 6. a) Spring seasonal recording period, b) Summer seasonal recording period, and c) Autumn seasonal recording period.

Three-day LTSA

Site 1

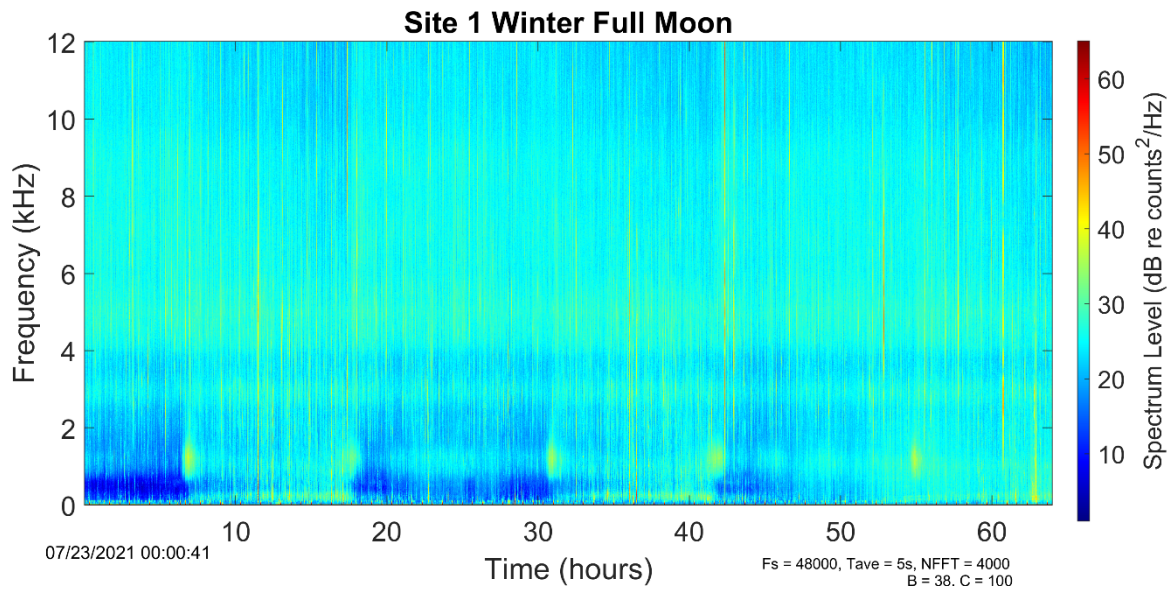
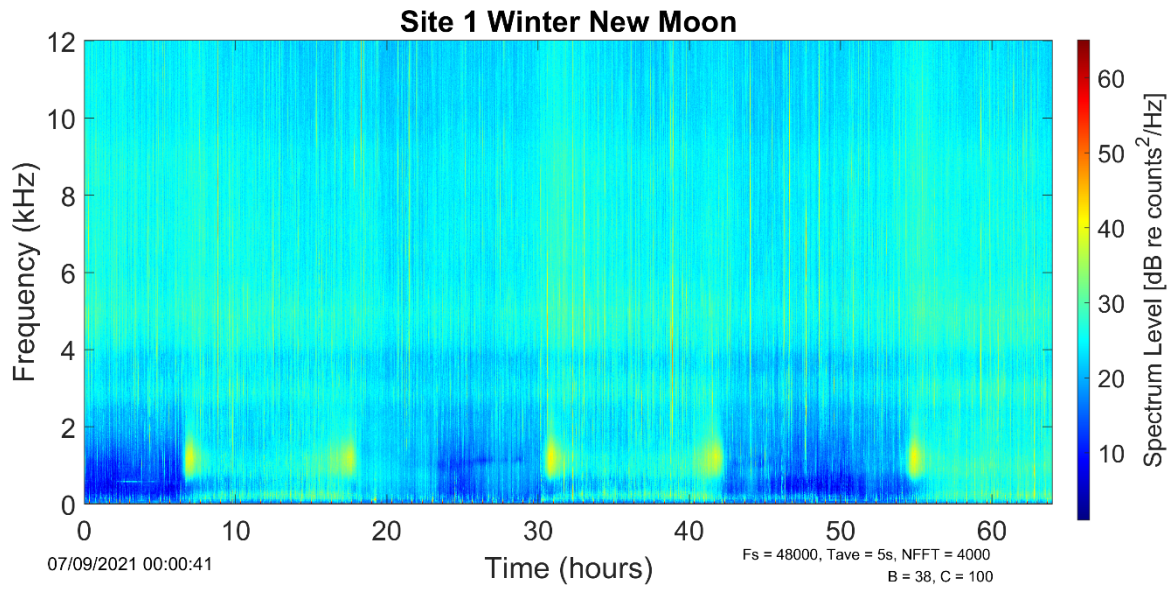


Figure A6. 72-hour LTSA for Site 1 during the Winter recording period. a) New moon, b) Full moon.

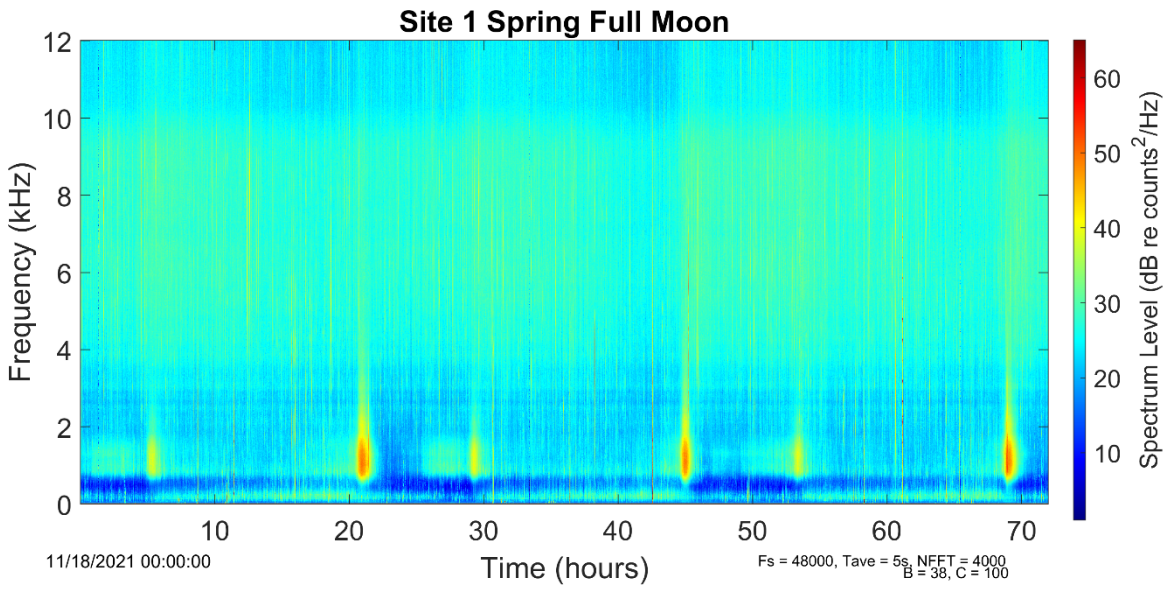
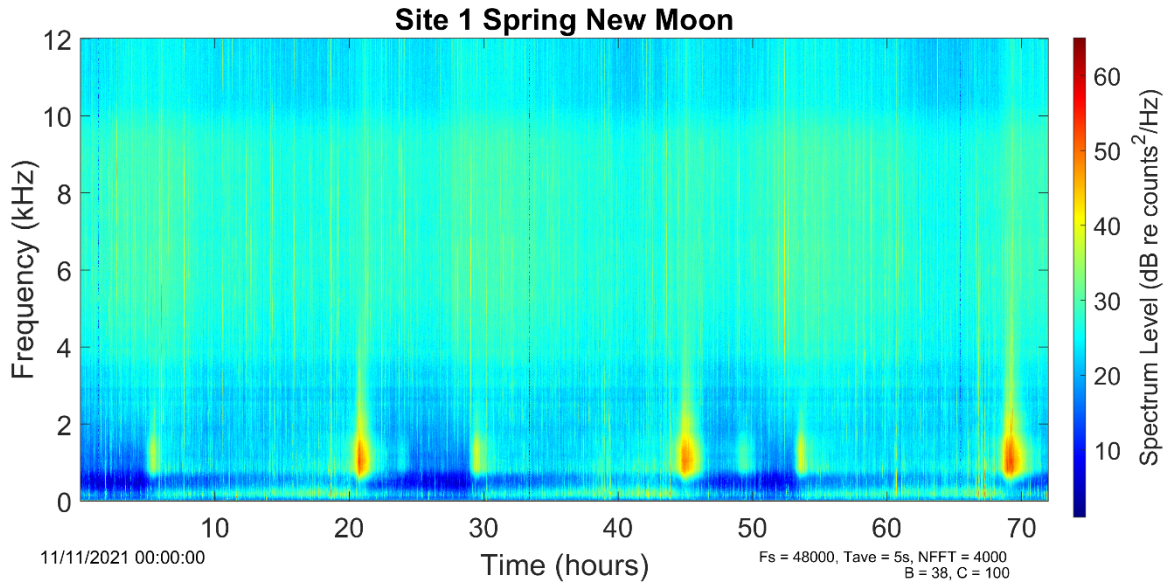


Figure A7. 72-hour L TSA for Site 1 during the Spring recording period. a) New moon, b) Full moon.

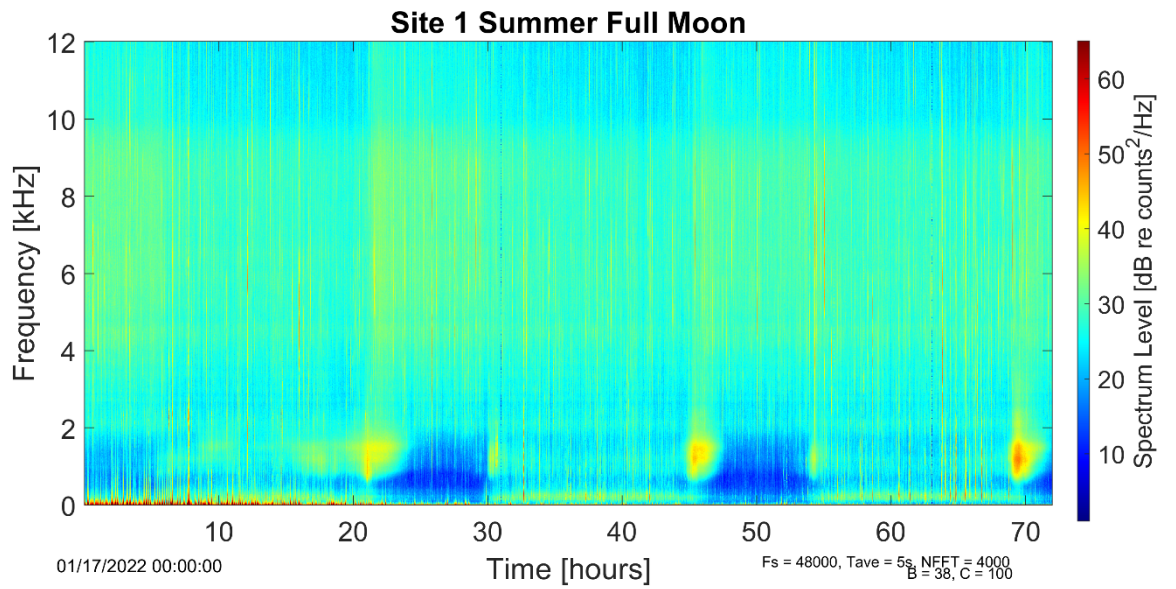
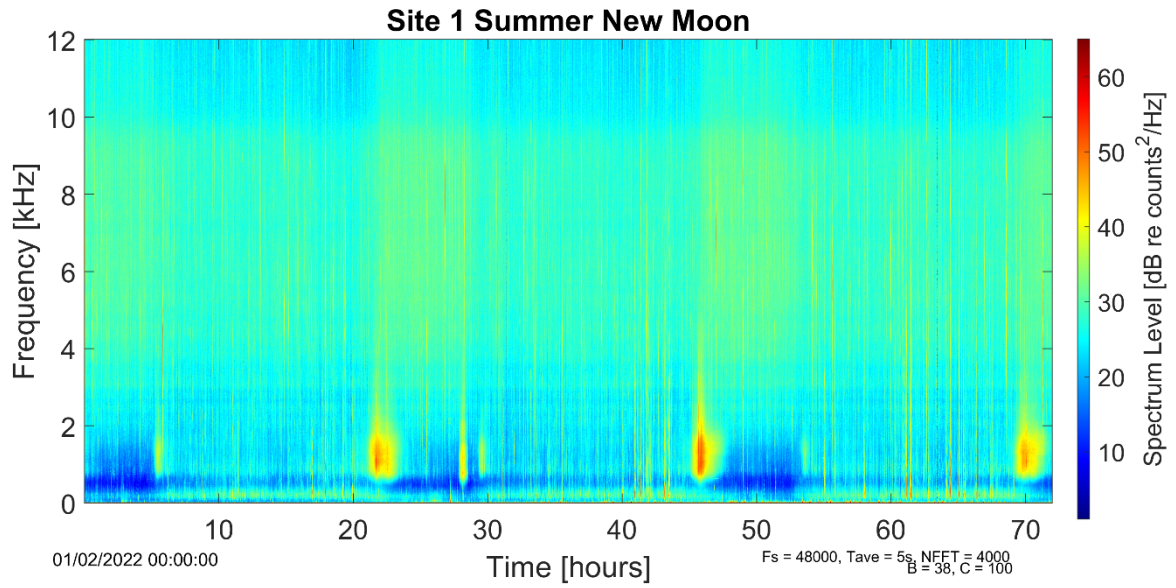


Figure A8. 72-hour LTSA for Site 1 during the Spring recording period. a) New moon, b) Full moon.

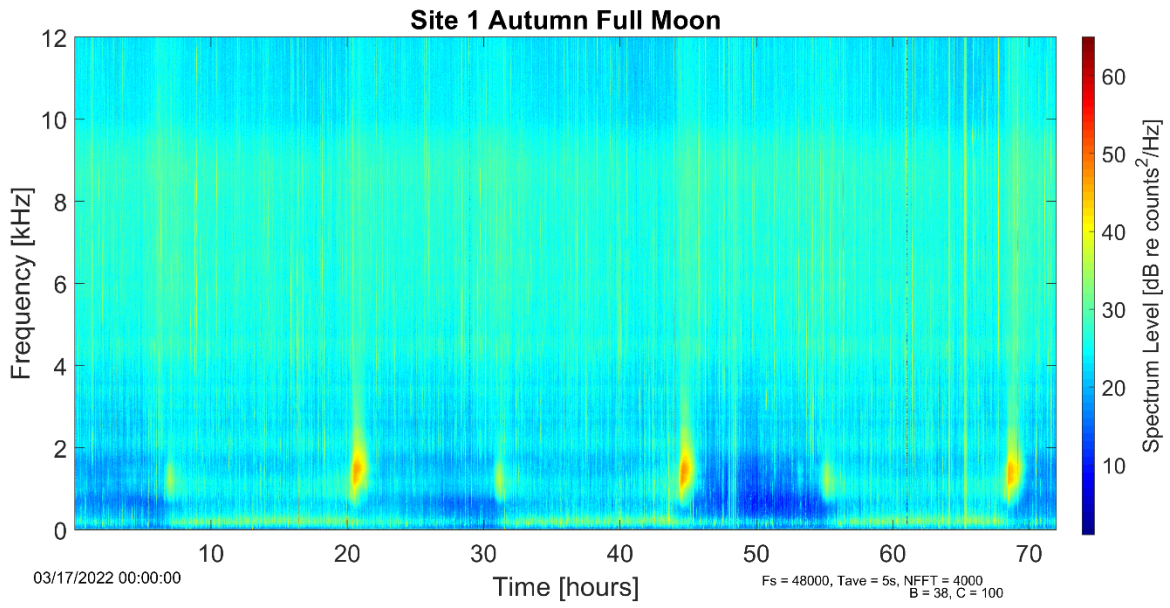


Figure A9. 72-hour LTSA for Site 1 during the Autumn recording period. a) New moon, b) Full moon.

Site 2

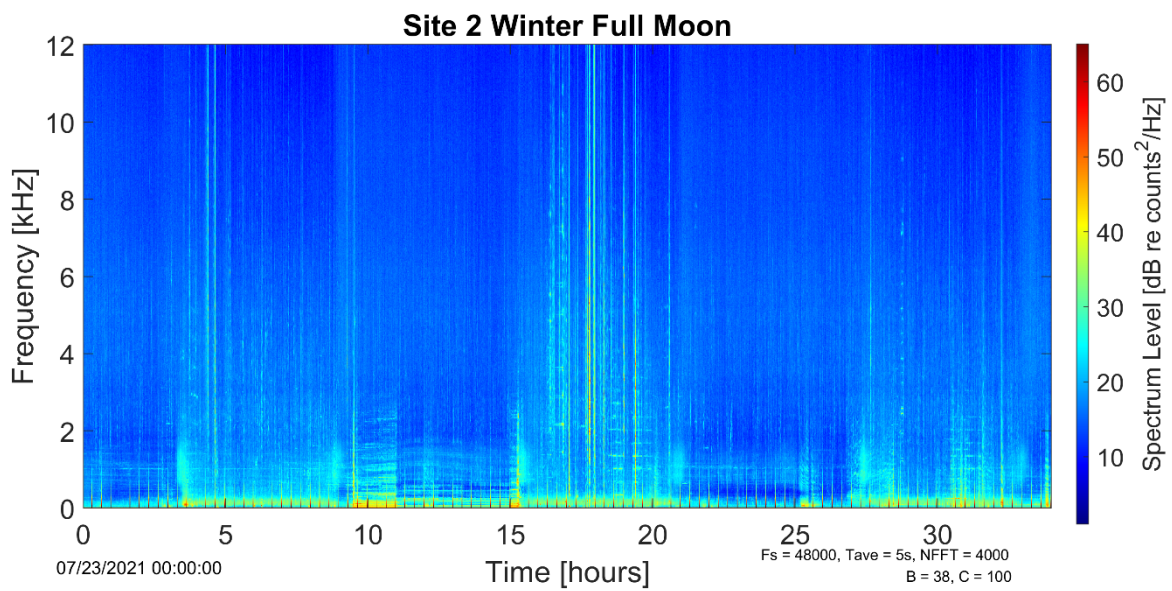
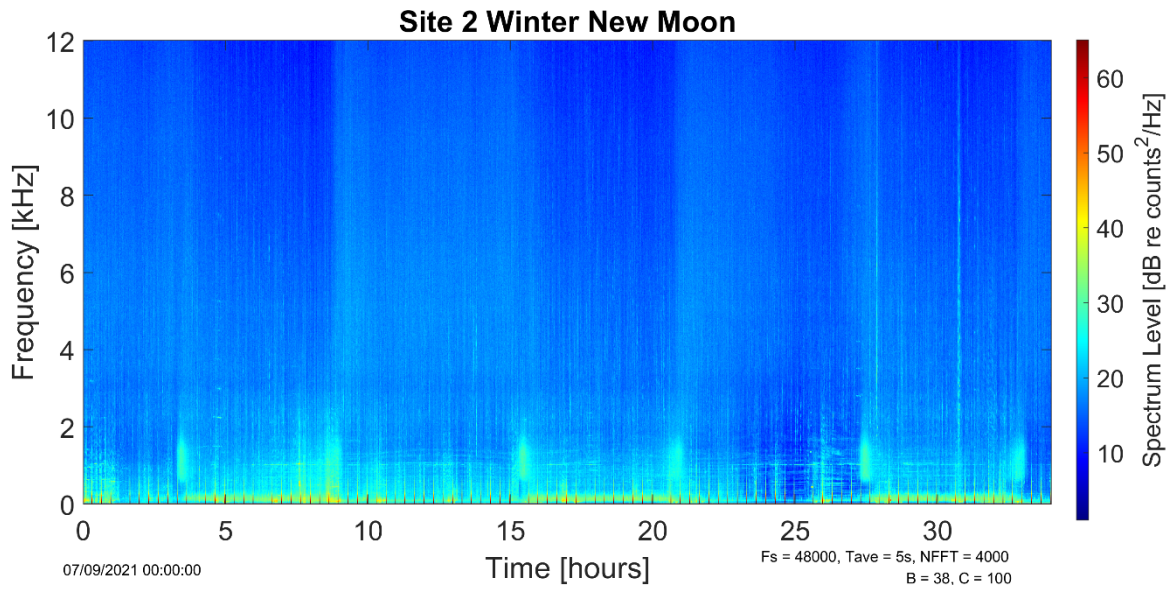


Figure A10. 72-hour LTSA for Site 2 during the Winter recording period. a) New moon, b) Full moon.

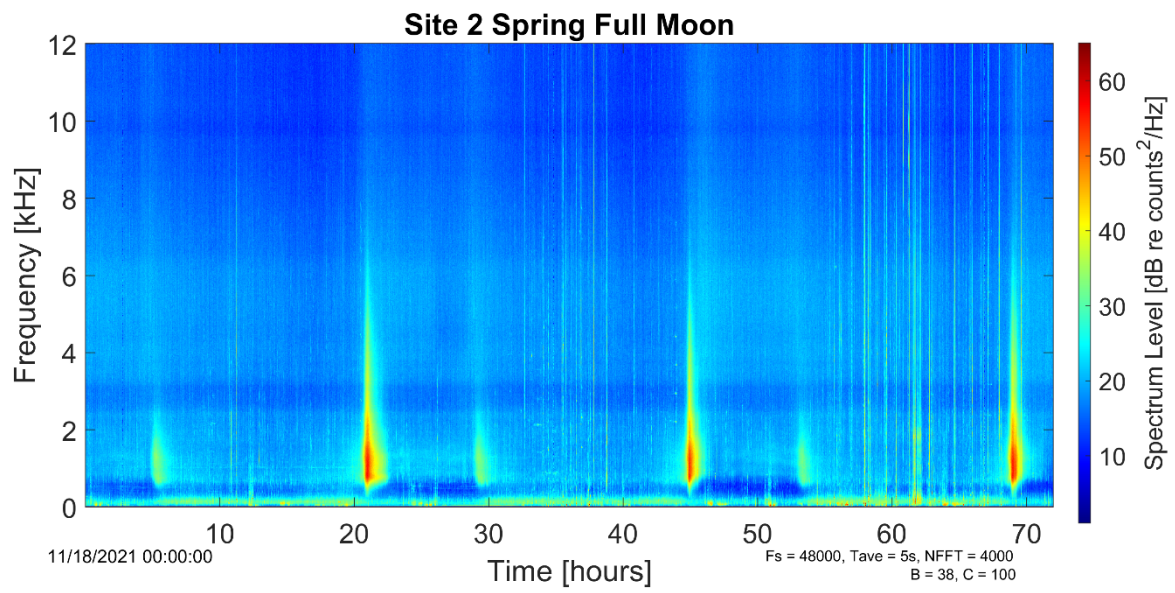
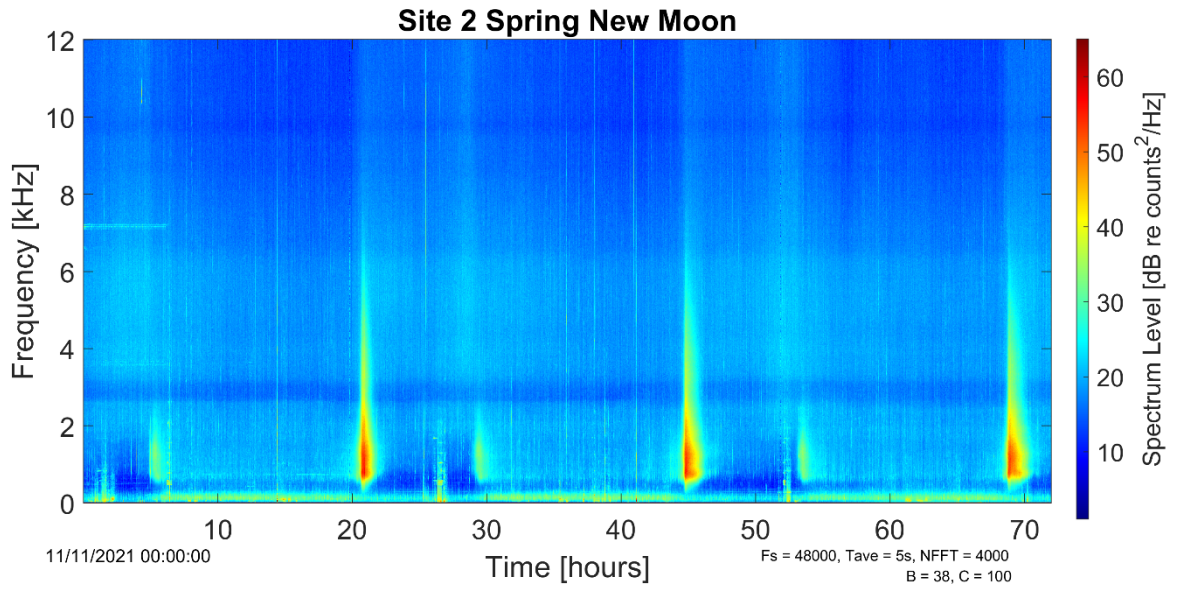


Figure A11. 72-hour LTSA for Site 2 during the Spring recording period. a) New moon, b) Full moon.

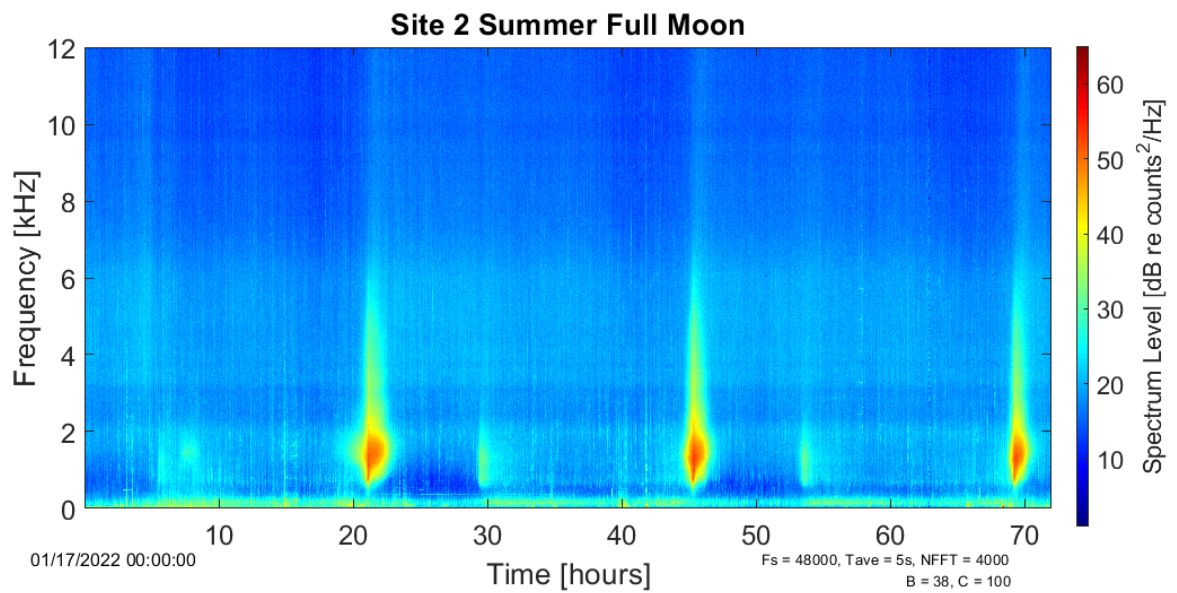
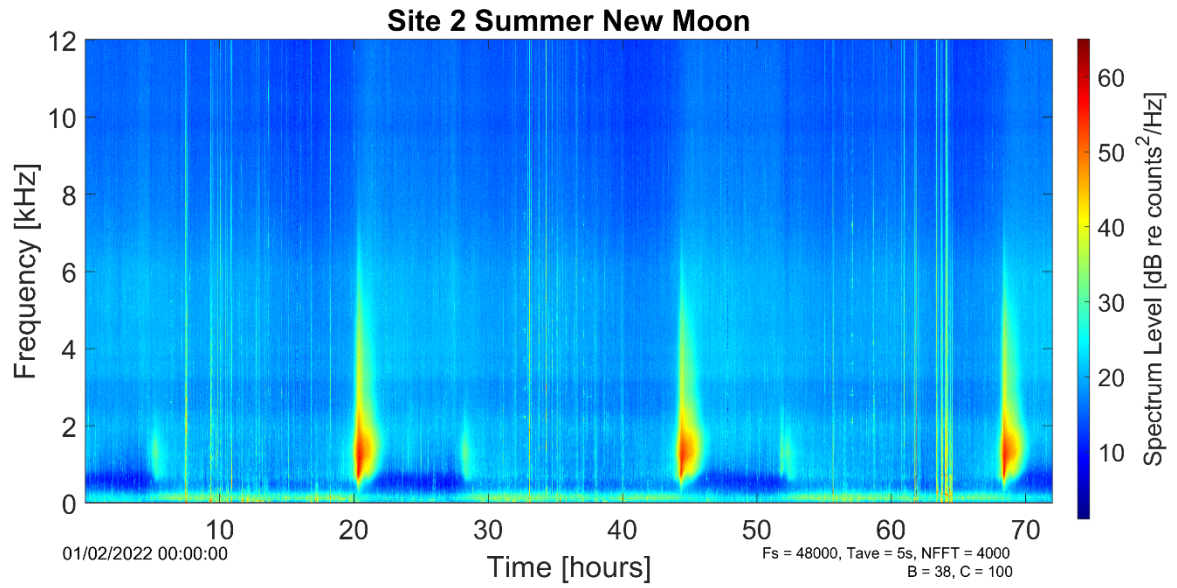


Figure A12. 72-hour LTSA for Site 2 during the Summer recording period. a) New moon, b) Full moon.

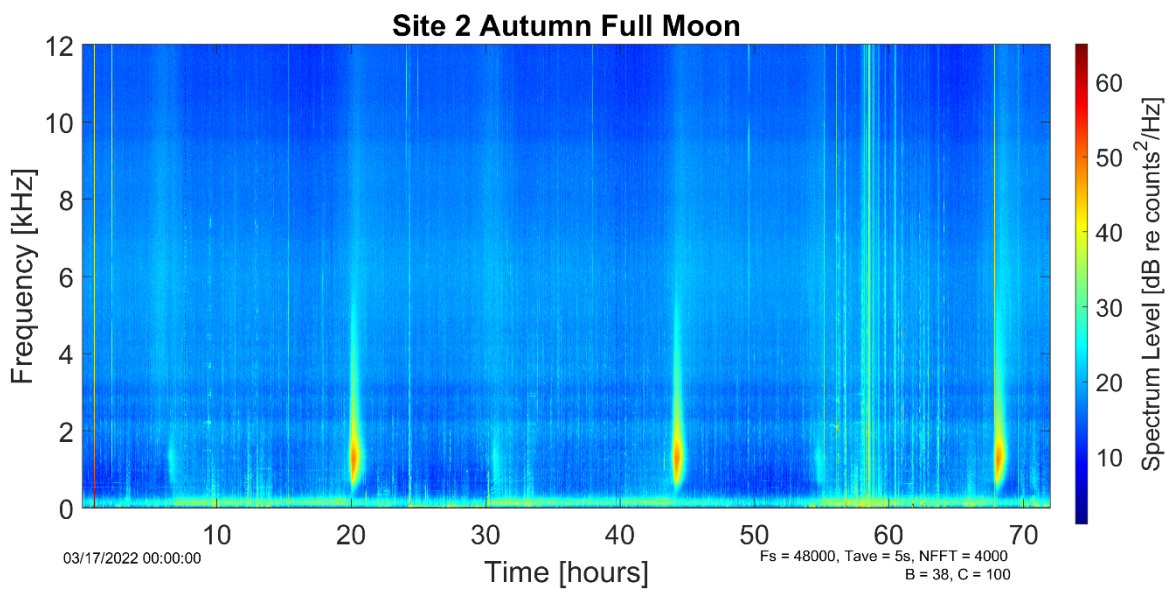
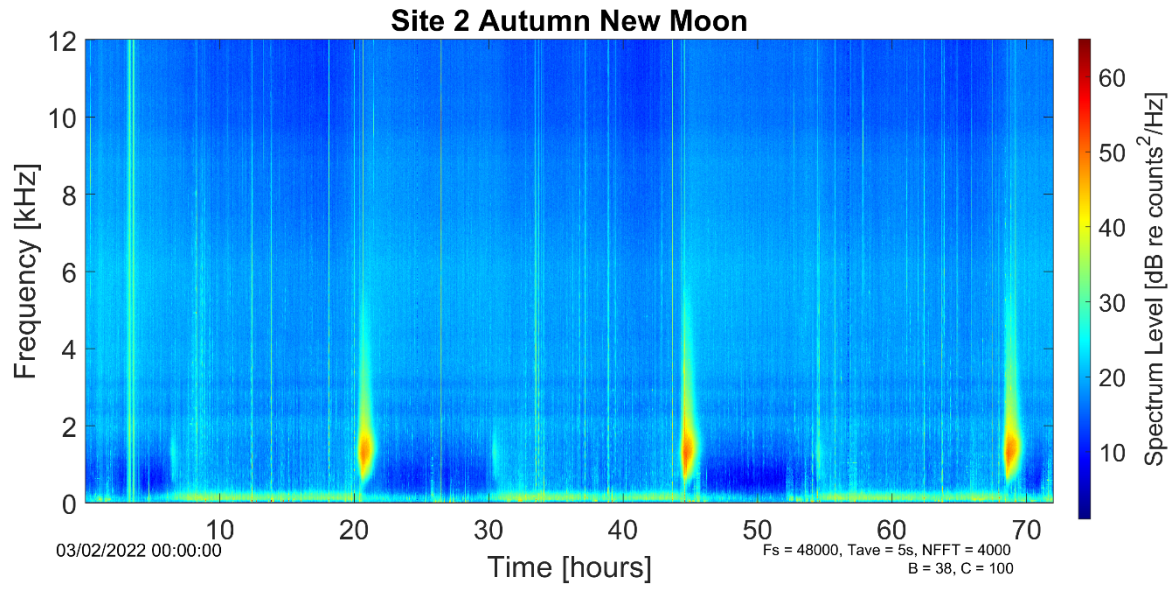
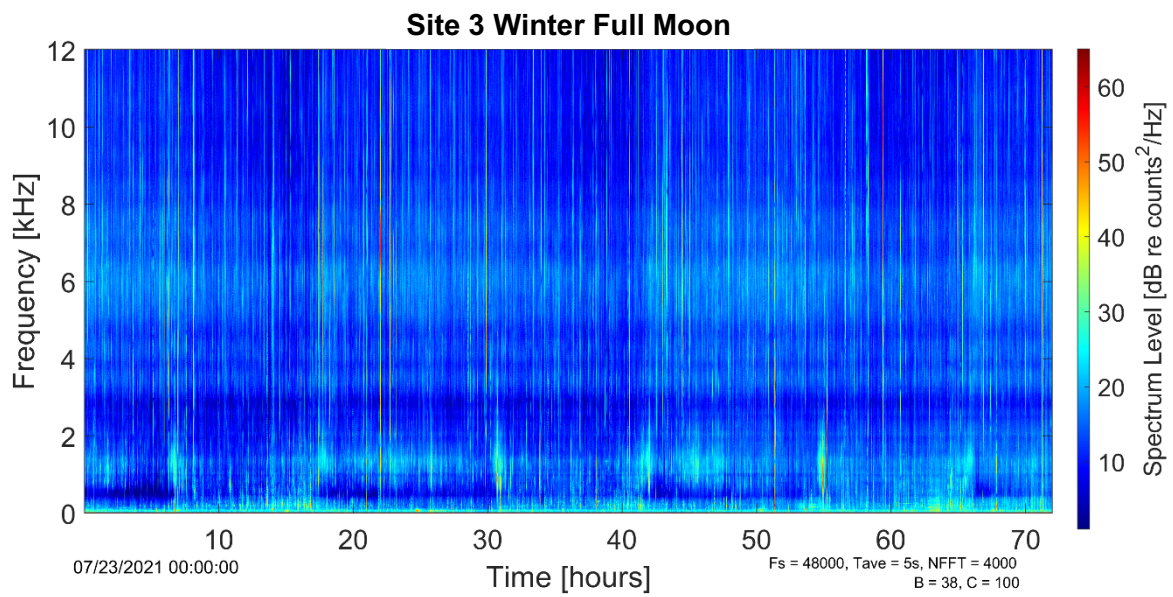
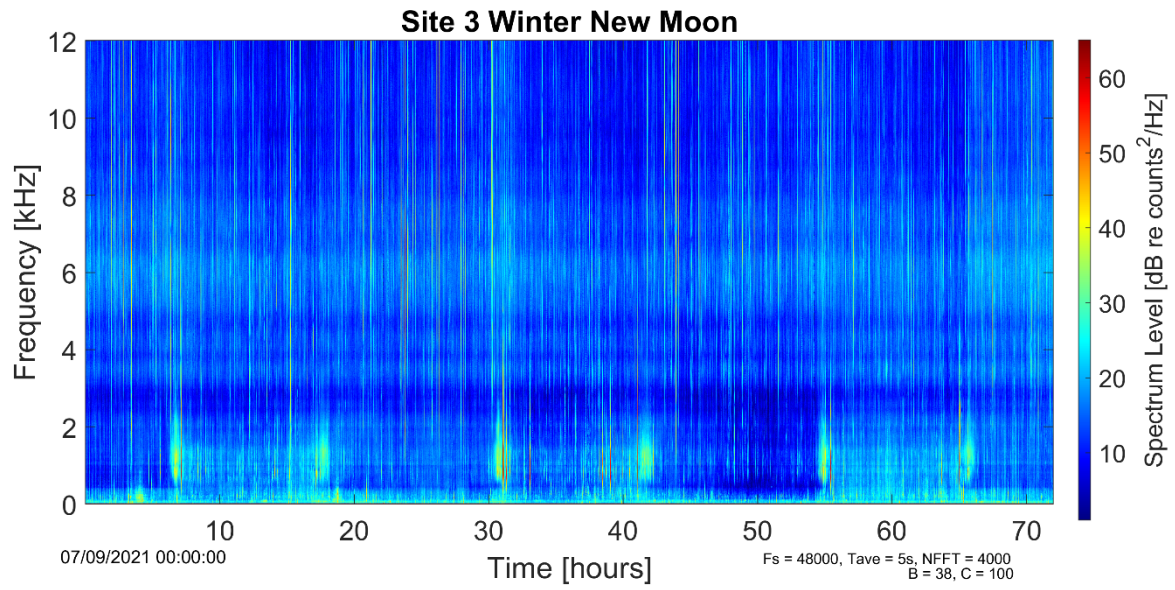


Figure A13. 72-hour LTSA for Site 2 during the Autumn recording period. a) New moon, b) Full moon.

Site 3



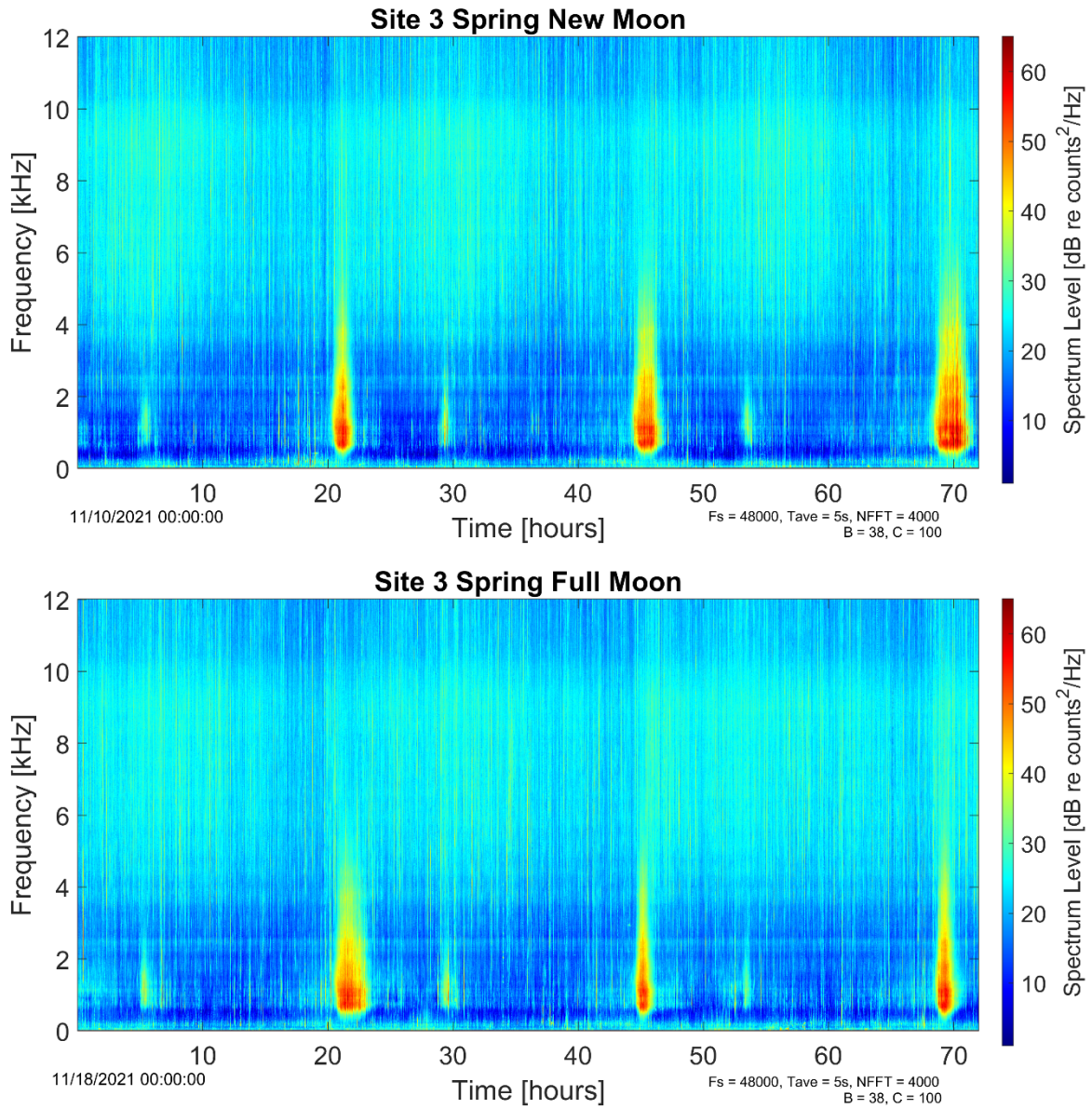


Figure A15. 72-hour LTSA for Site 3 during the Winter recording period. a) New moon, b) Full moon.

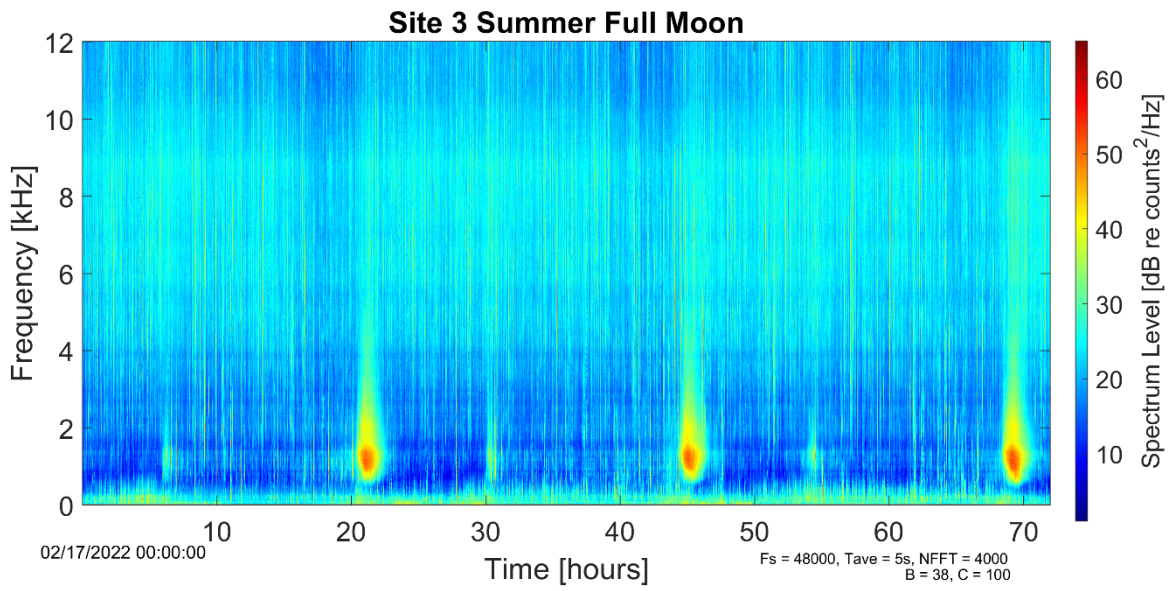
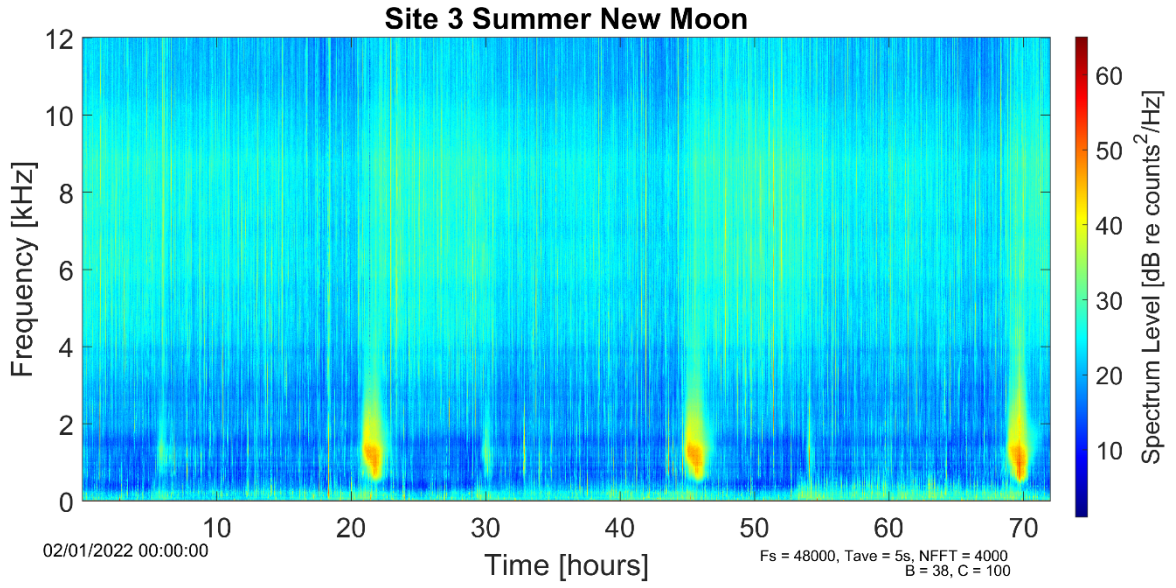


Figure A16. 72-hour LTSA for Site 3 during the Summer recording period. a) New moon, b) Full moon.

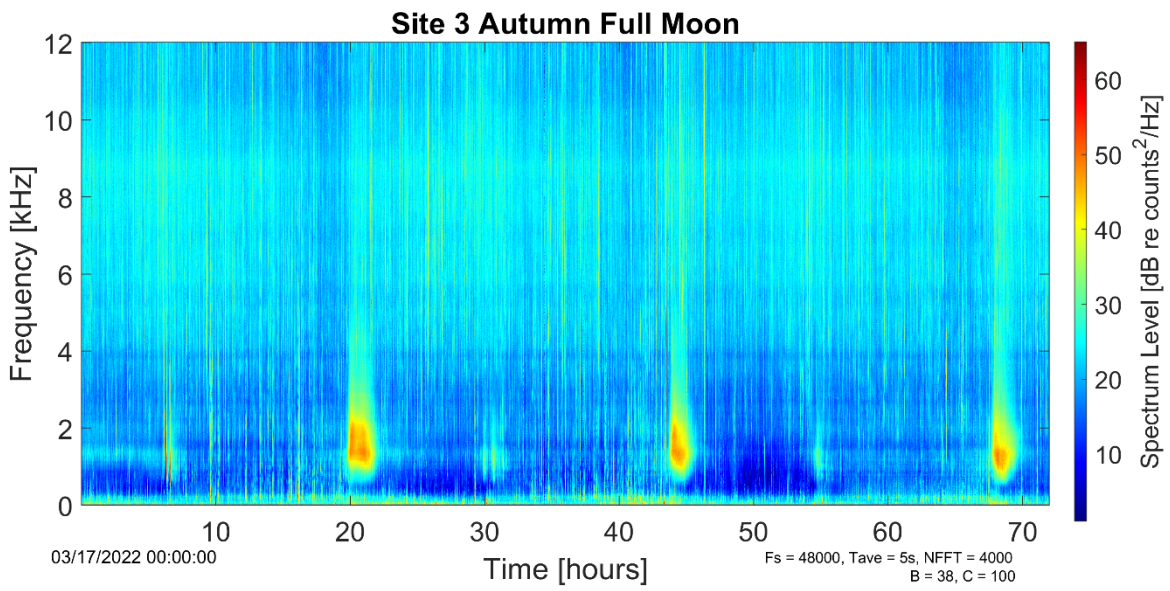
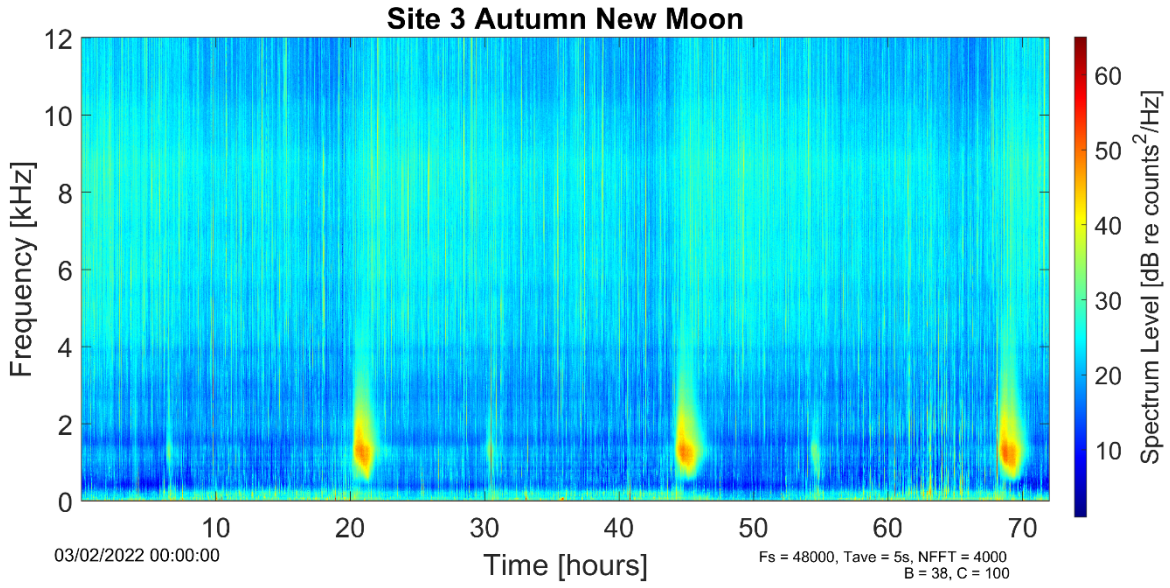


Figure A17. 72-hour LTSA for Site 3 during the Autumn recording period. a) New moon, b) Full moon.

Site 4

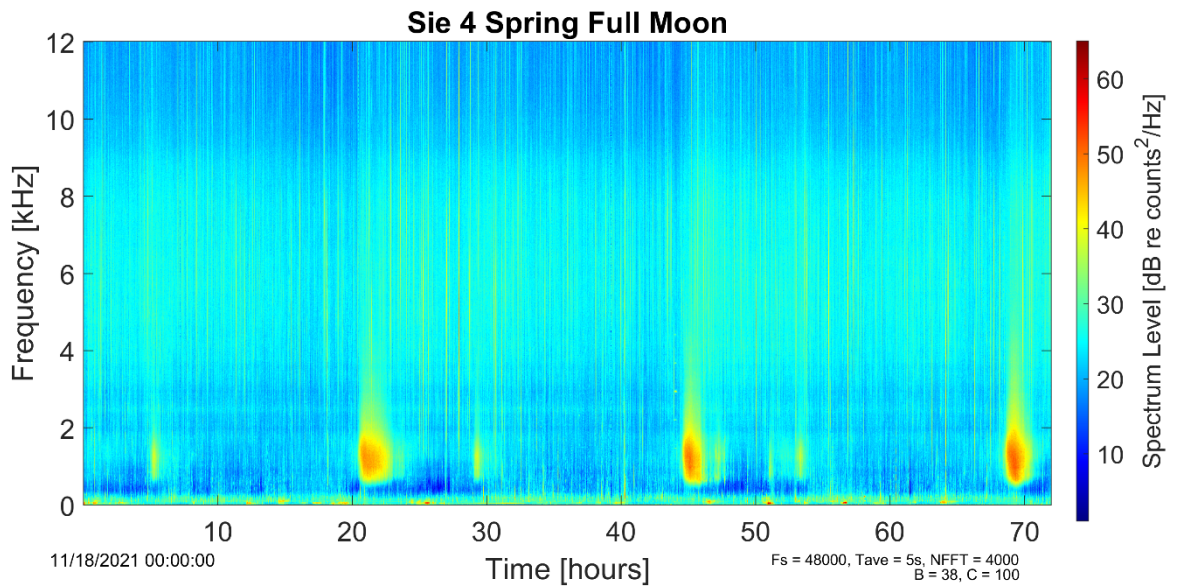
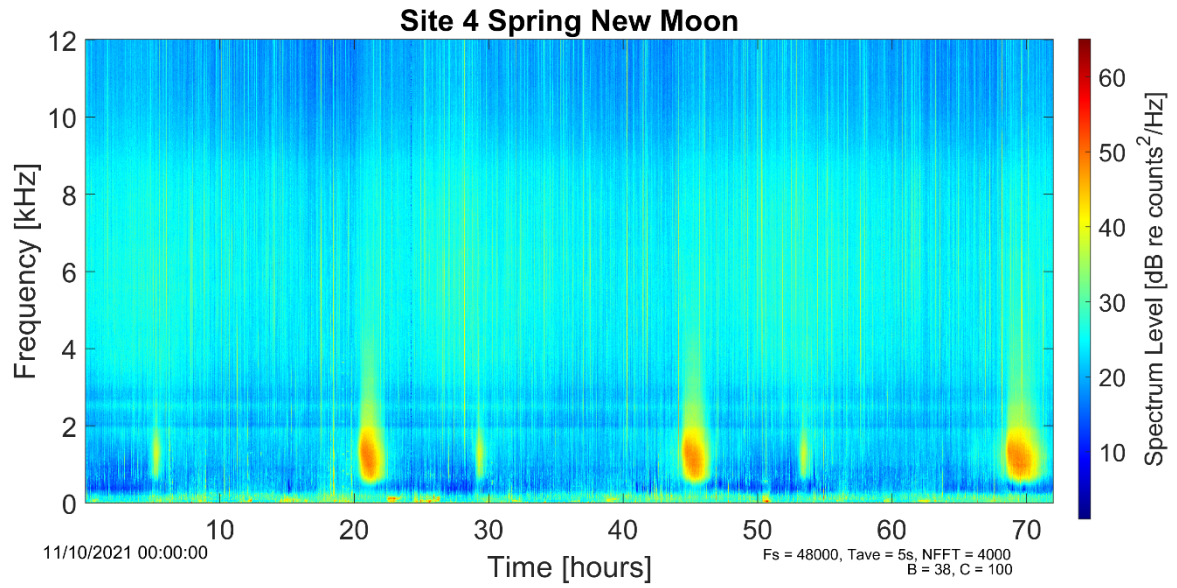


Figure A18. 72-hour LTSA for Site 4 during the Spring recording period. a) New moon, b) Full moon.

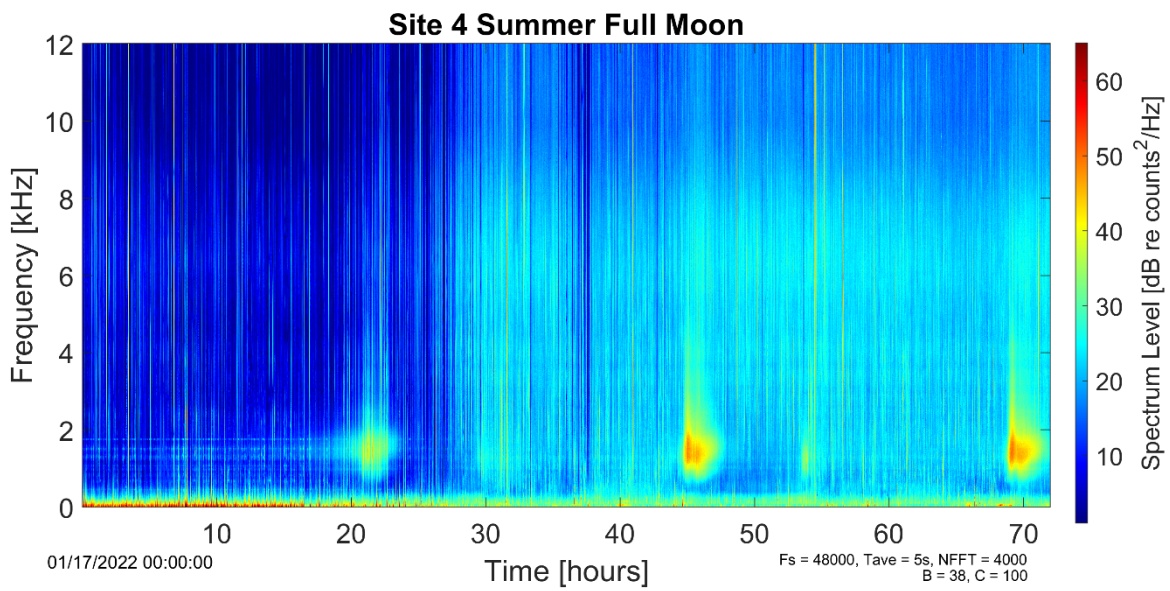
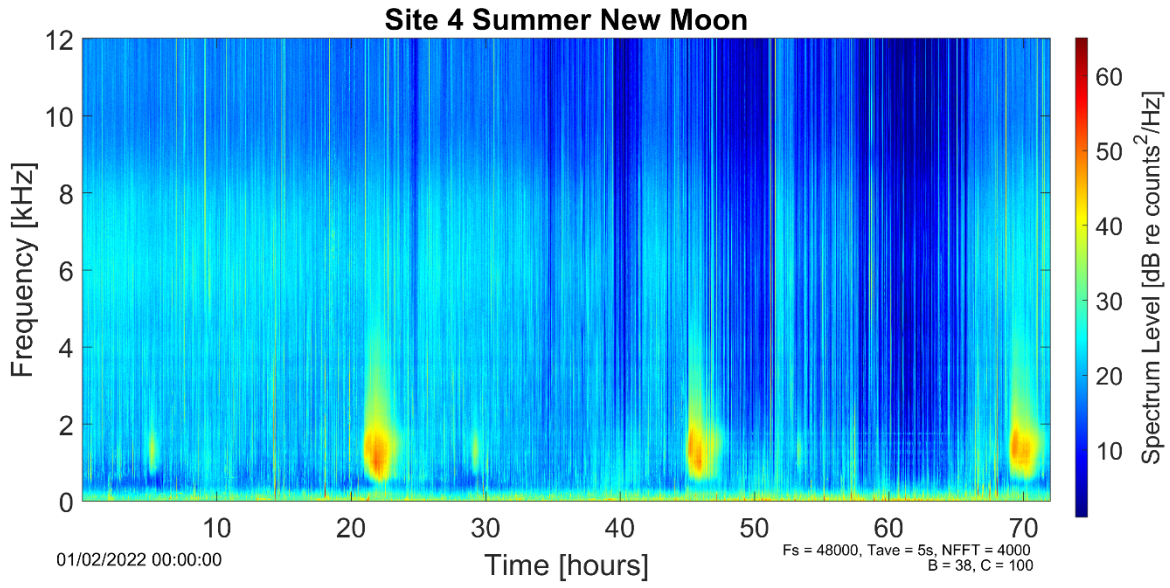


Figure A19. 72-hour LTSA for Site 4 during the Summer recording period. a) New moon, b) Full moon.

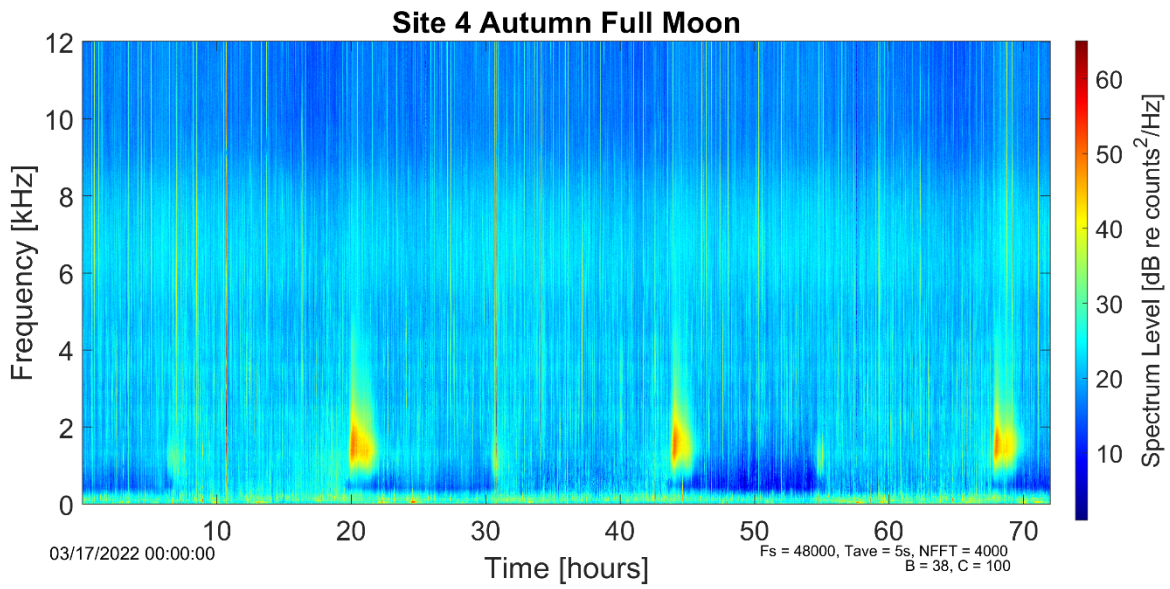
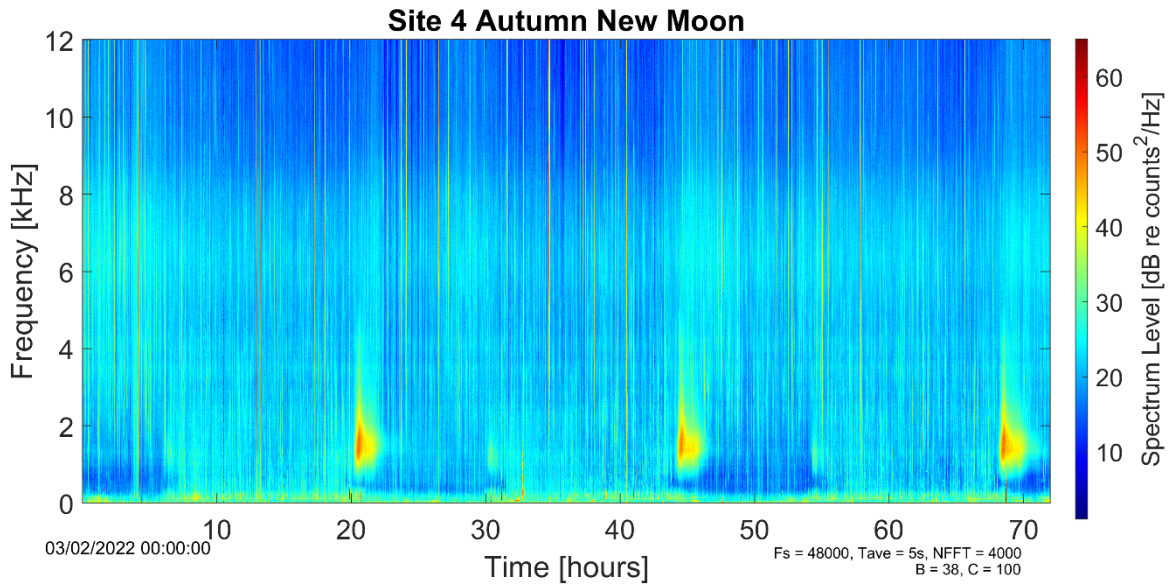


Figure A20. 72-hour LTSA for Site 4 during the Autumn recording period. a) New moon, b) Full moon.

Site 6

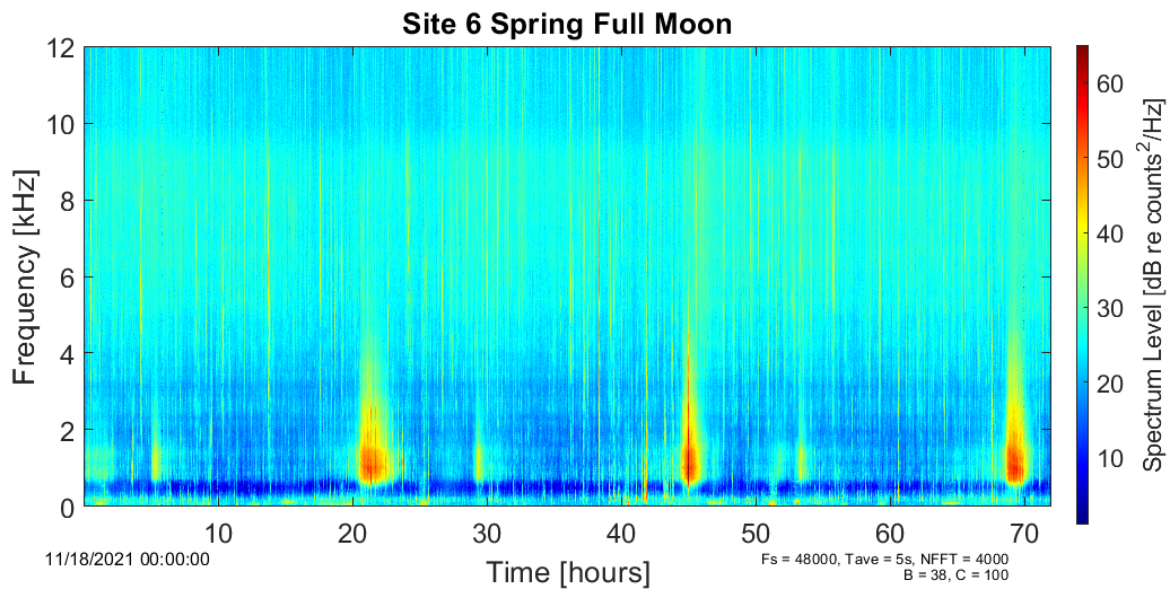
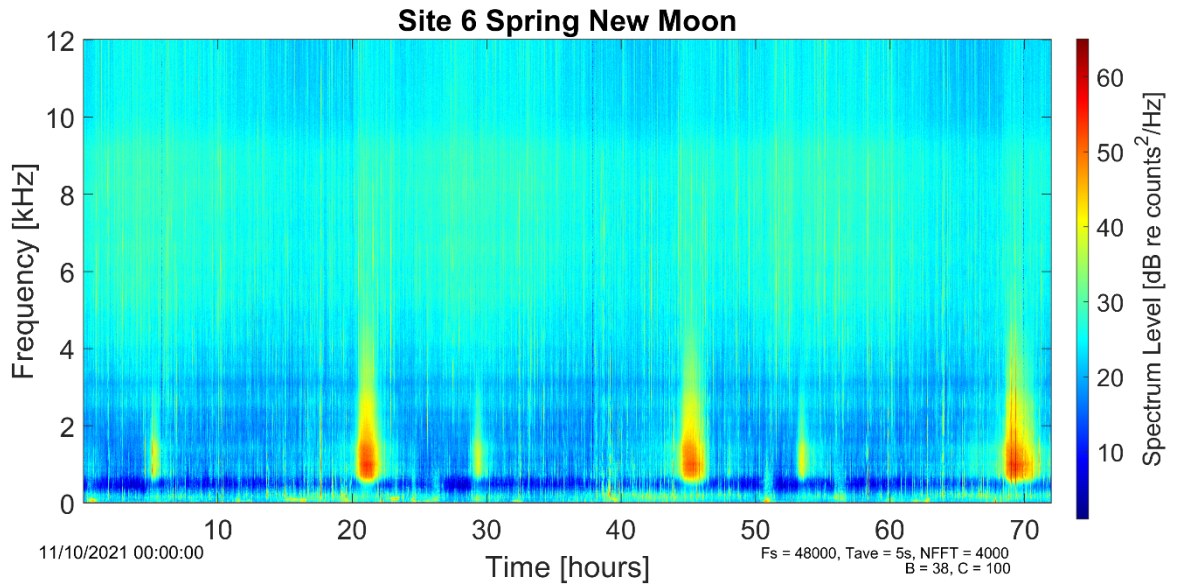


Figure A21. 72-hour LTSA for Site 6 during the Spring recording period. a) New moon, b) Full moon.

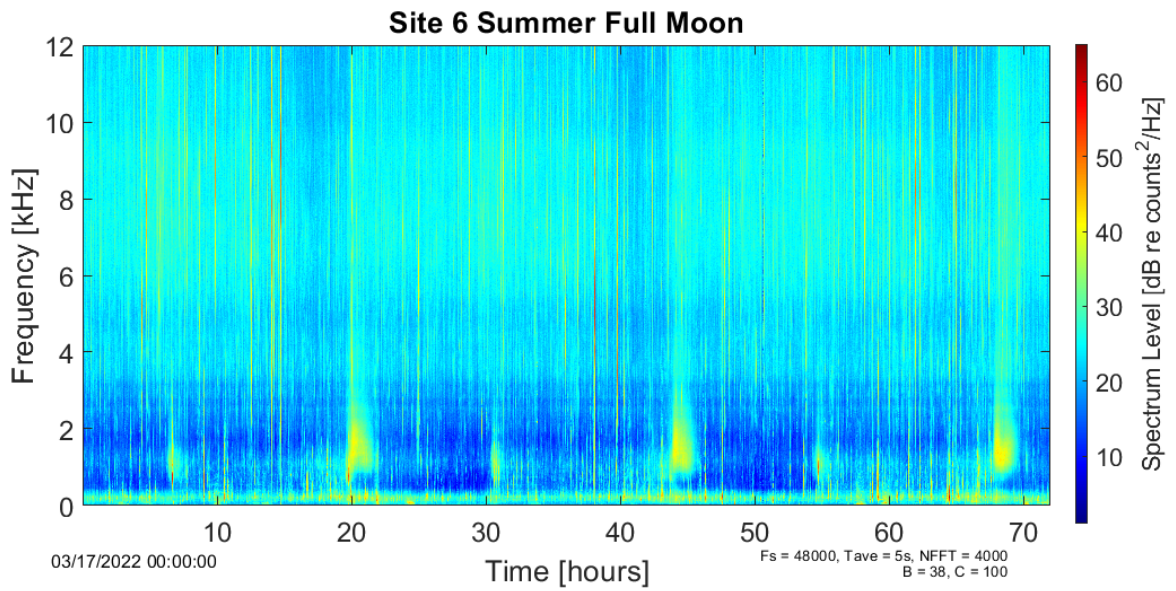
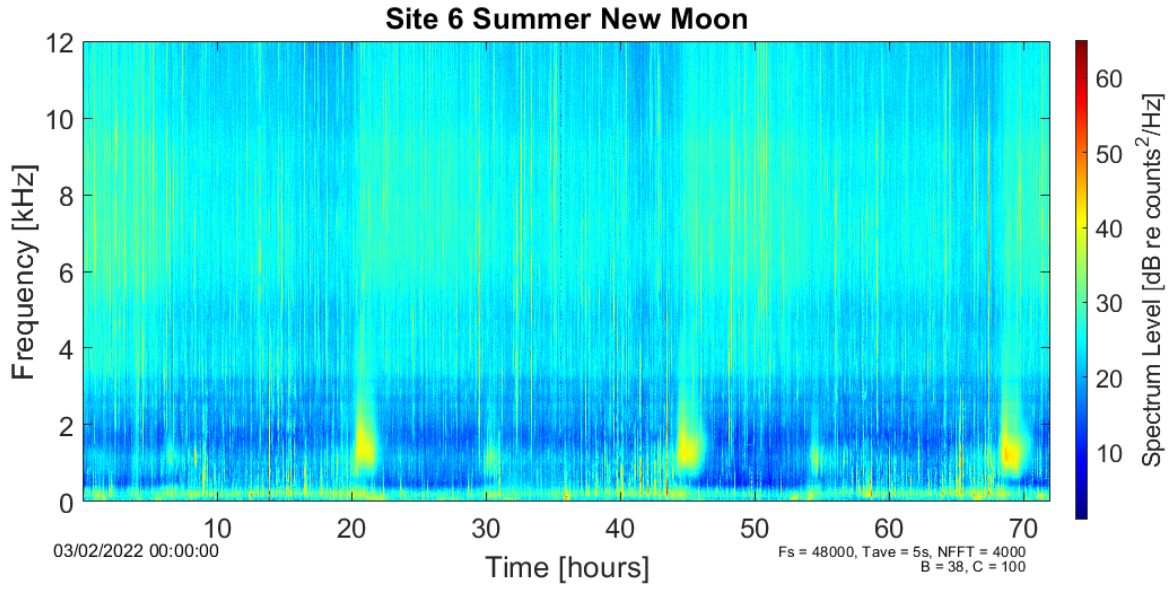


Figure A22. 72-hour LTSA for Site 6 during the Summer recording period. a) New moon, b) Full moon.

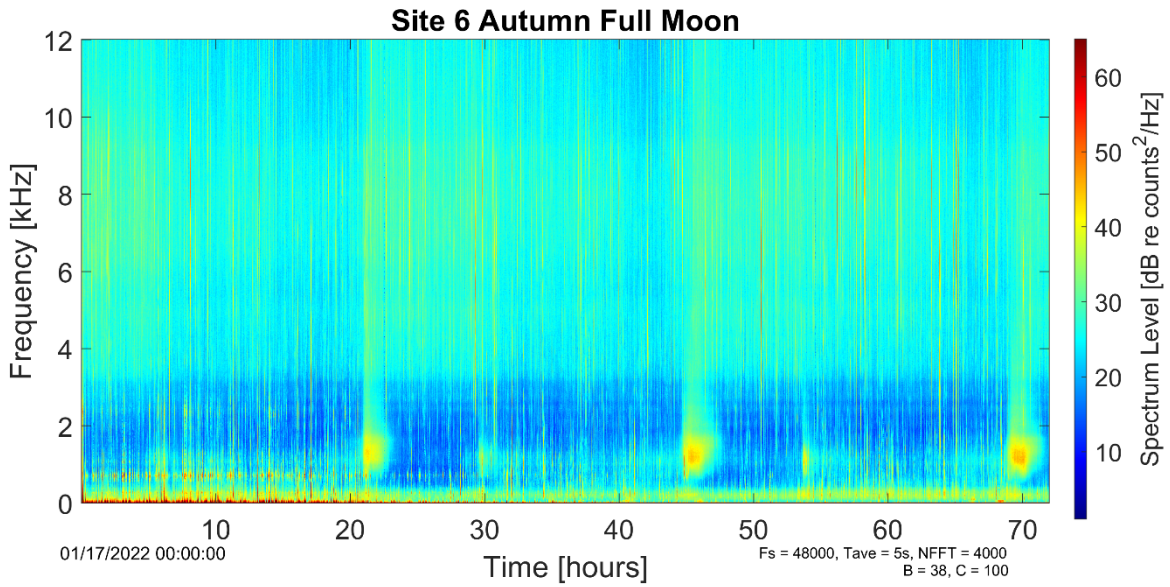
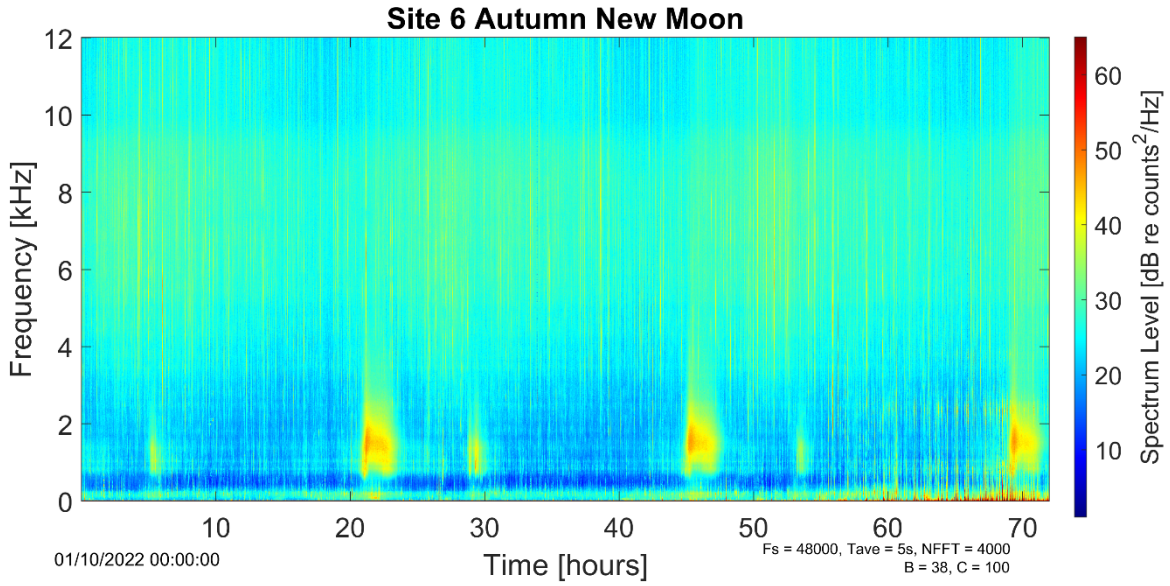


Figure A23. 72-hour LTSA for Site 6 during the Autumn recording period. a) New moon, b) Full moon.