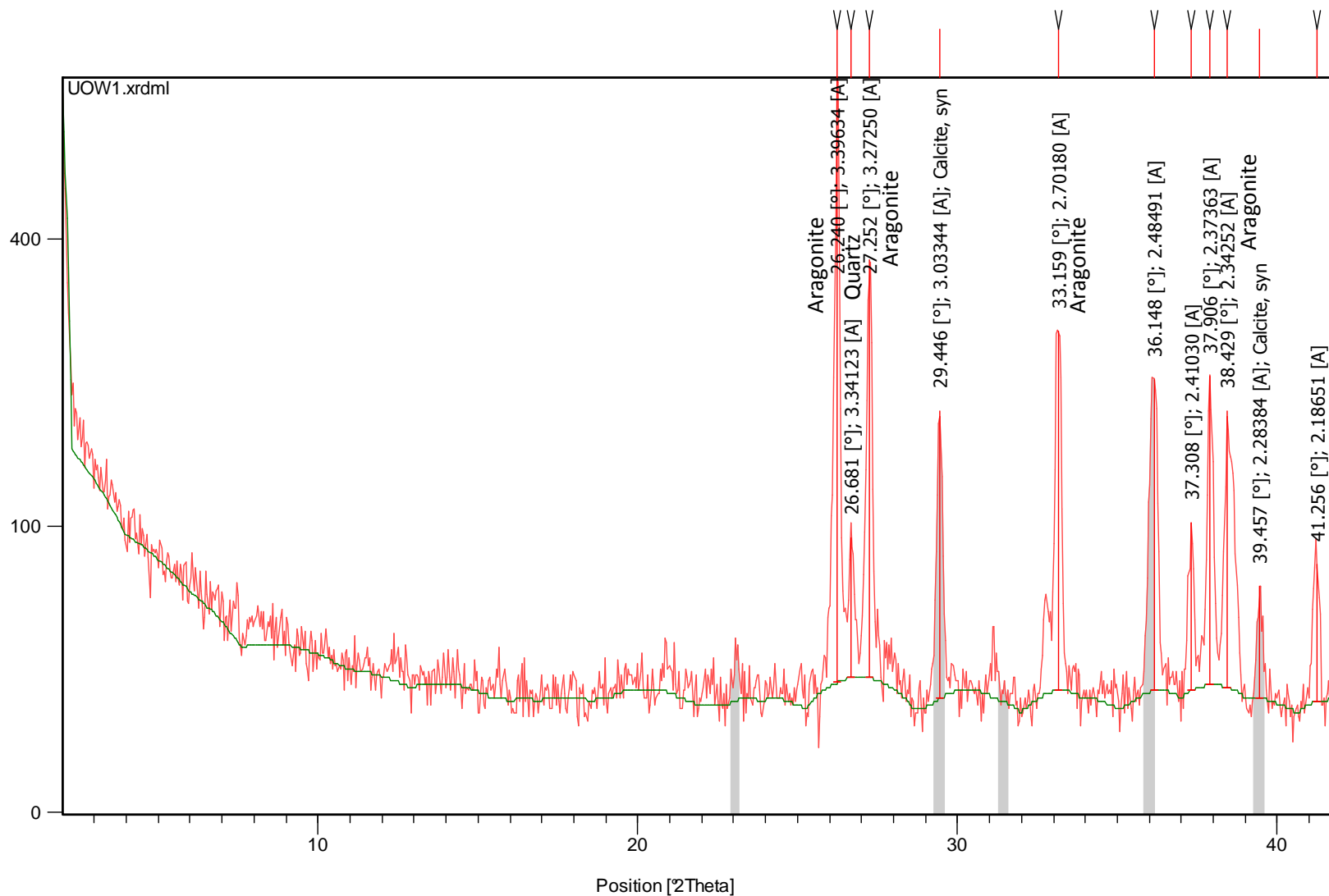


XRD Graphs – Seep Carbonates

These graphs have been annotated to indicate the location of major peaks and their corresponding mineralogies.

- MOD-1
- MOD-3a
- MOD-3b
- MOD-3c
- MOD-3d
- MOD-3e
- MOD-4
- MOD-5a
- MOD-5b
- MOD-8
- MOD-9a
- MOD-9b
- MOD-10
- MOD-11

Counts

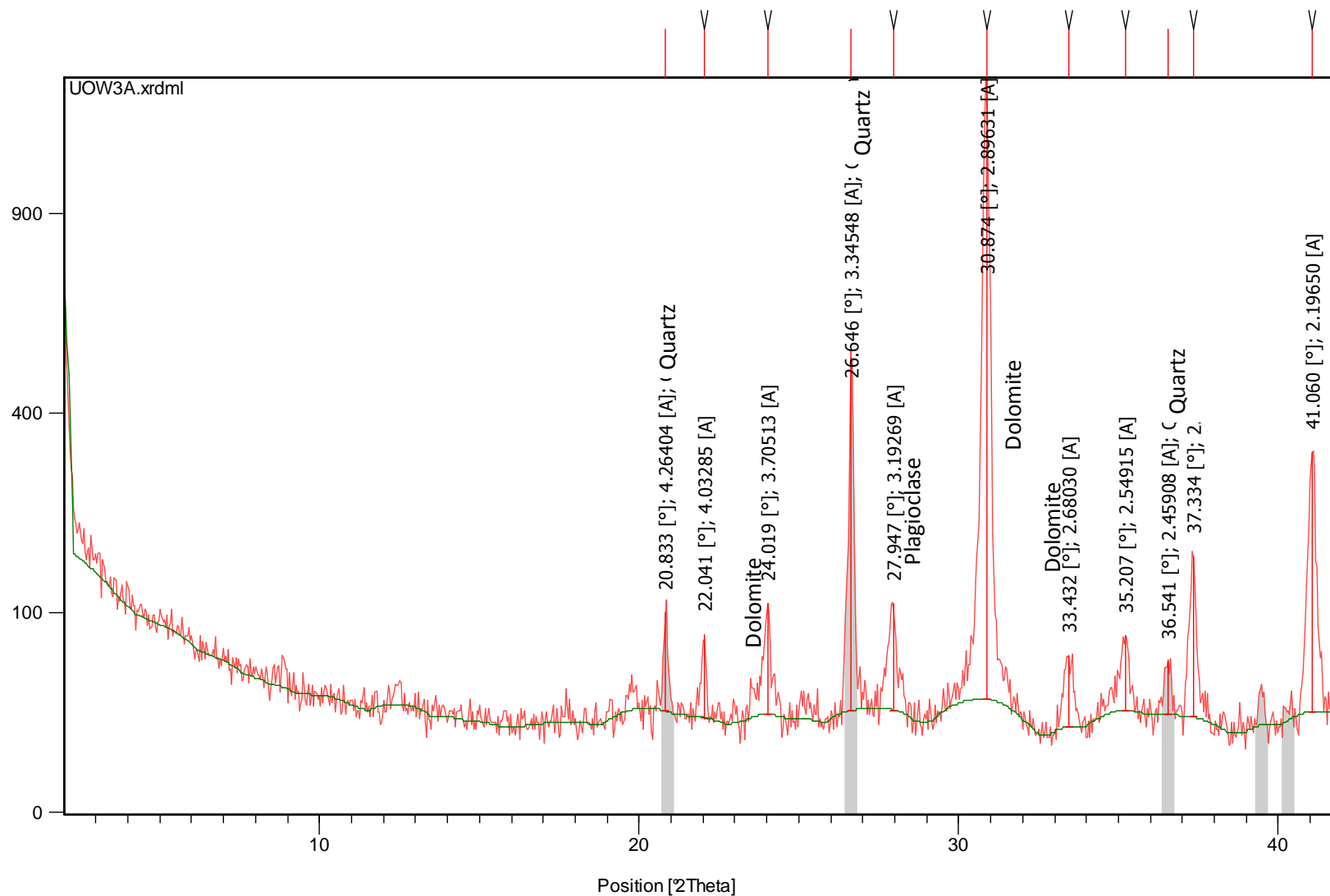


Selected Pattern: silica 00-033-1161

Residue + Peak List

Accepted Patterns

Counts

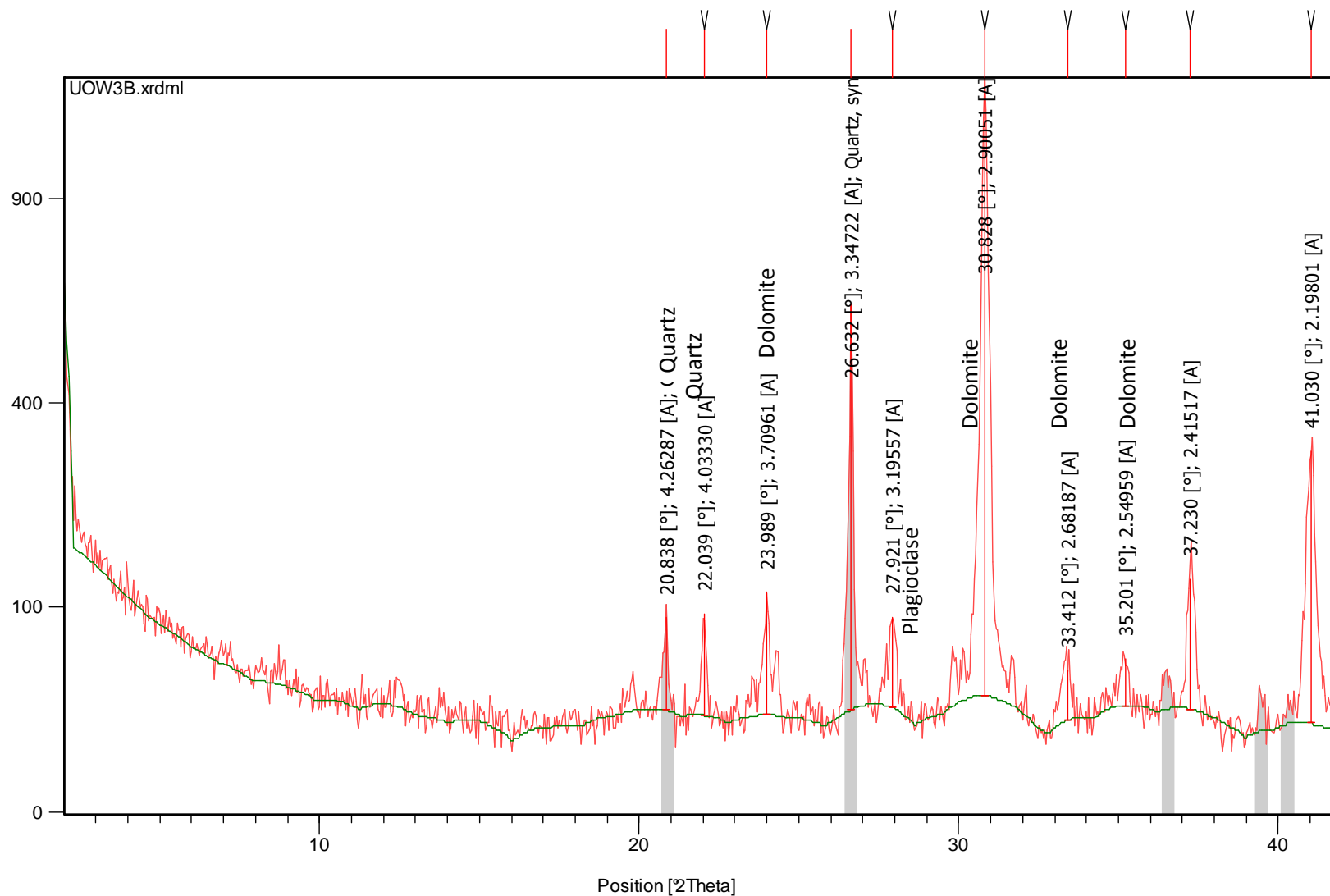


Selected Pattern: alumina 00-010-0173

Residue + Peak List

Accepted Patterns

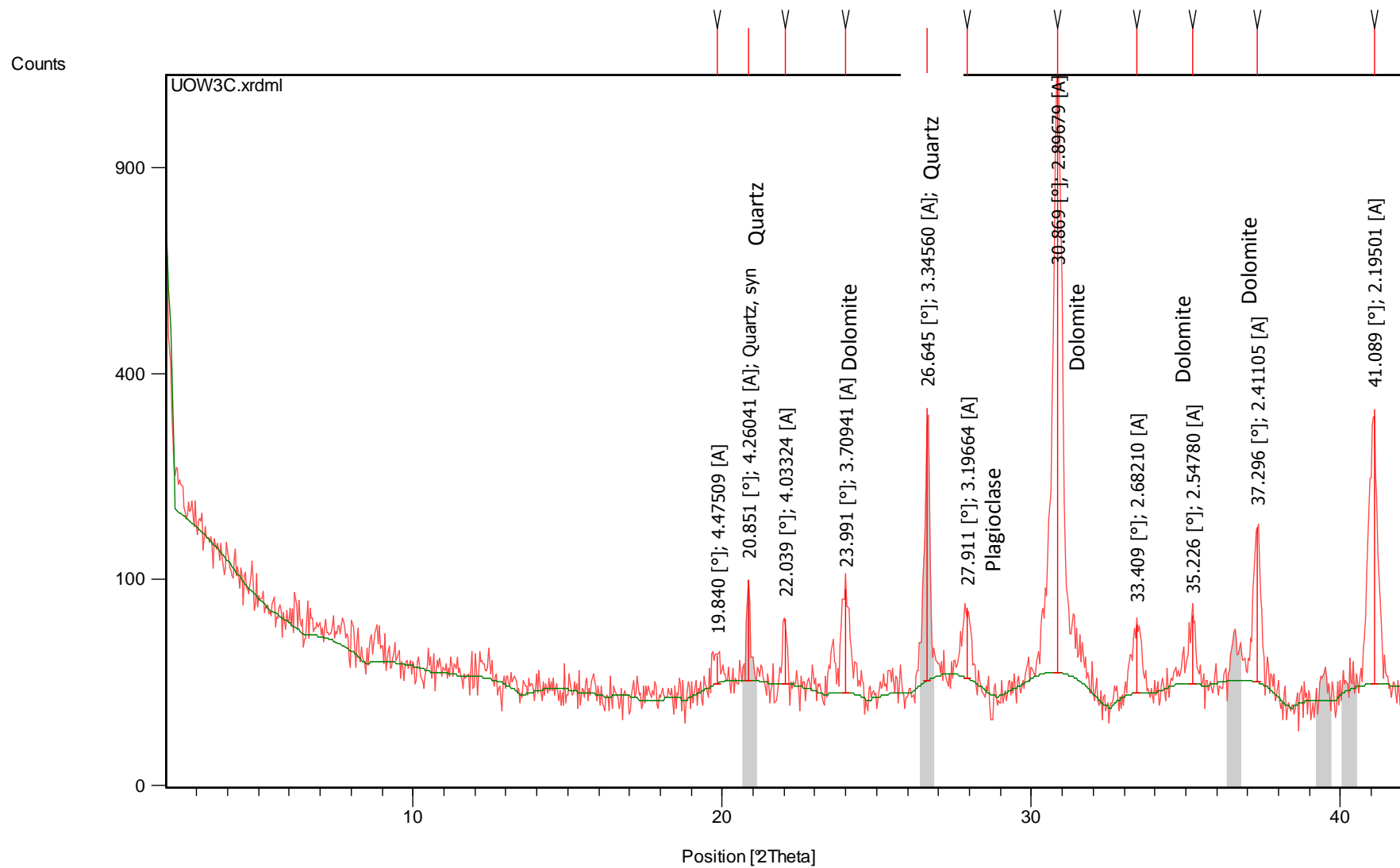
Counts



Selected Pattern: alumina 00-010-0173

Residue + Peak List

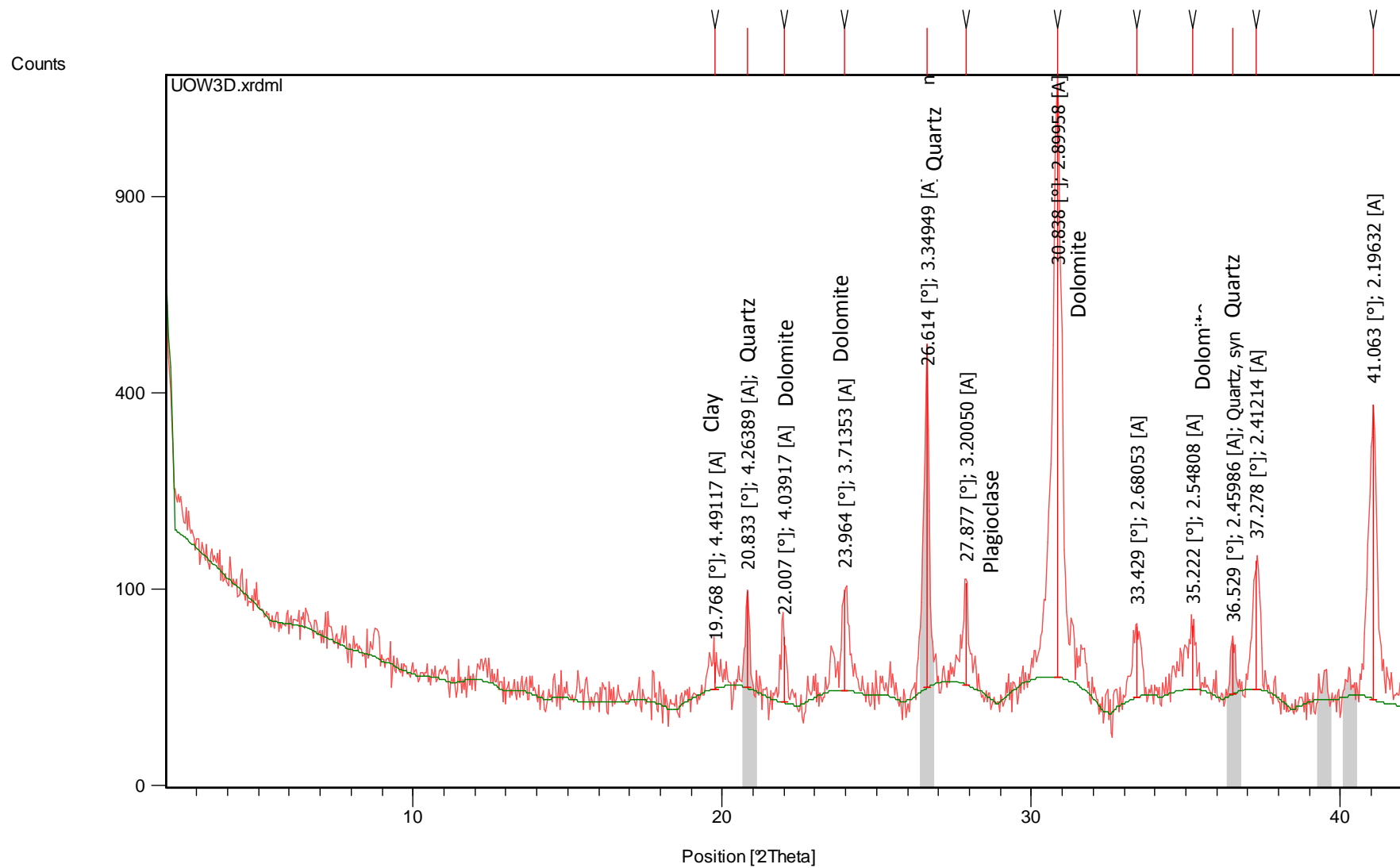
Accepted Patterns



Selected Pattern: alumina 00-010-0173

Residue + Peak List

Accepted Patterns

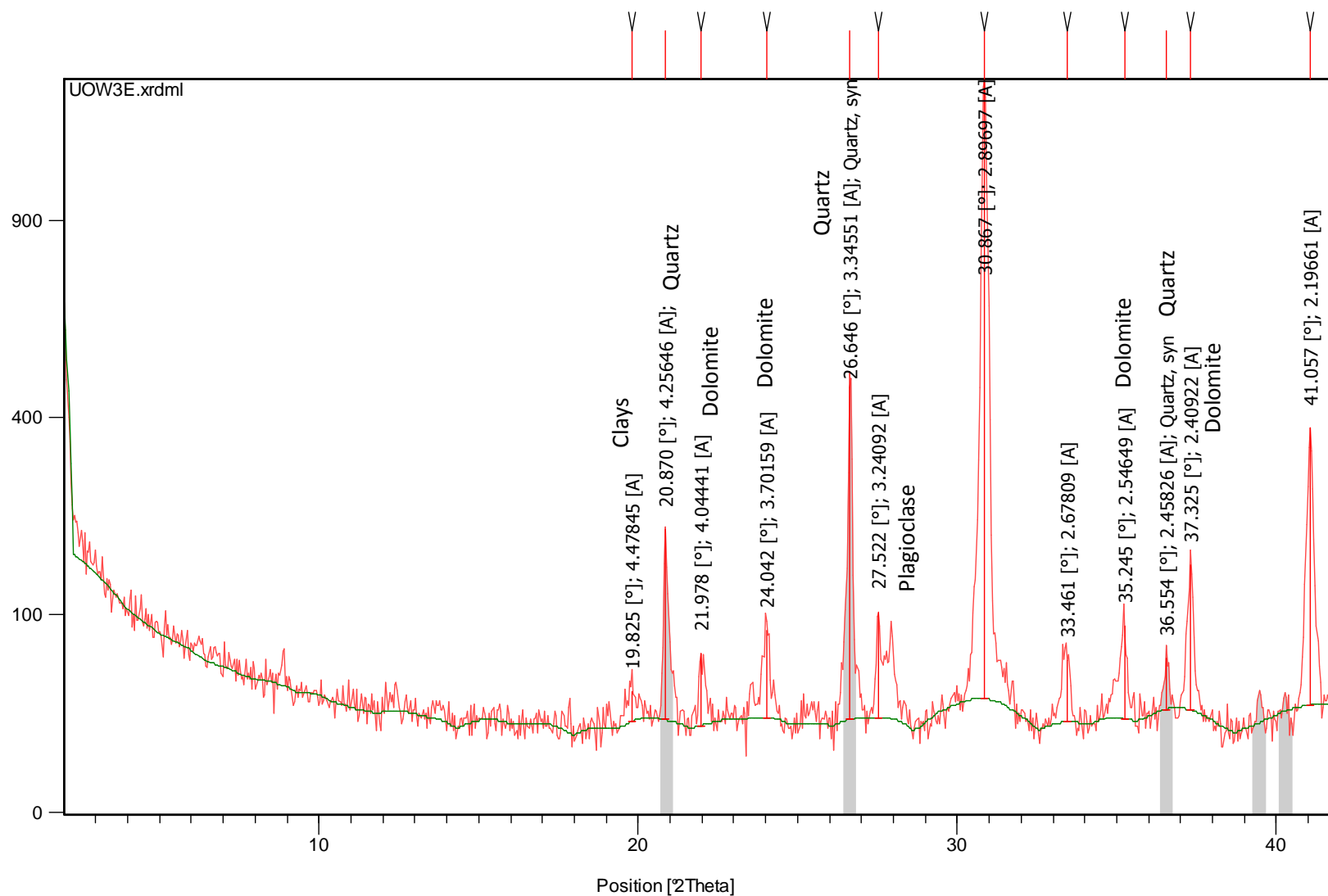


Selected Pattern: alumina 00-010-0173

Residue + Peak List

Accepted Patterns

Counts

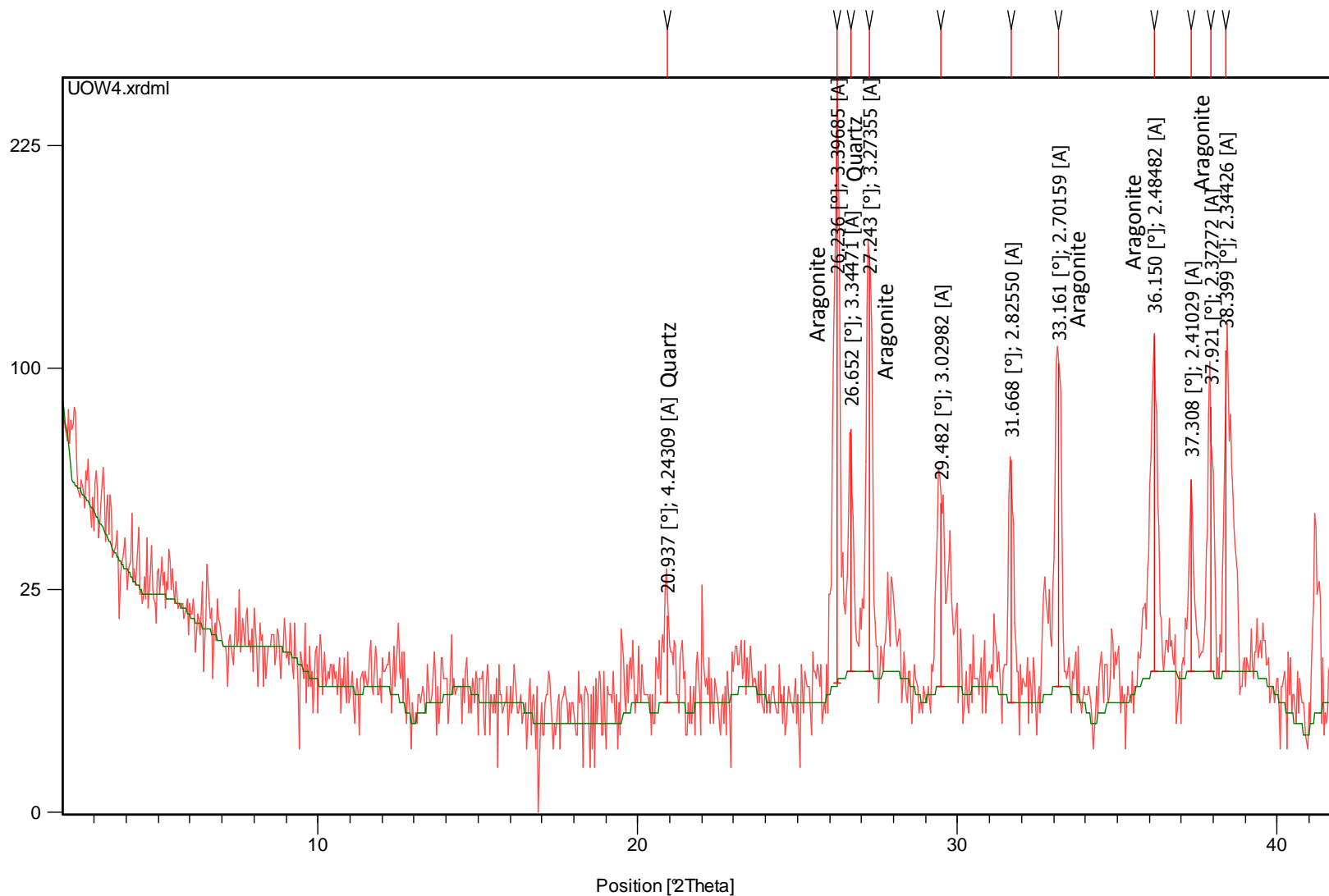


Selected Pattern: alumina 00-010-0173

Residue + Peak List

Accepted Patterns

Counts

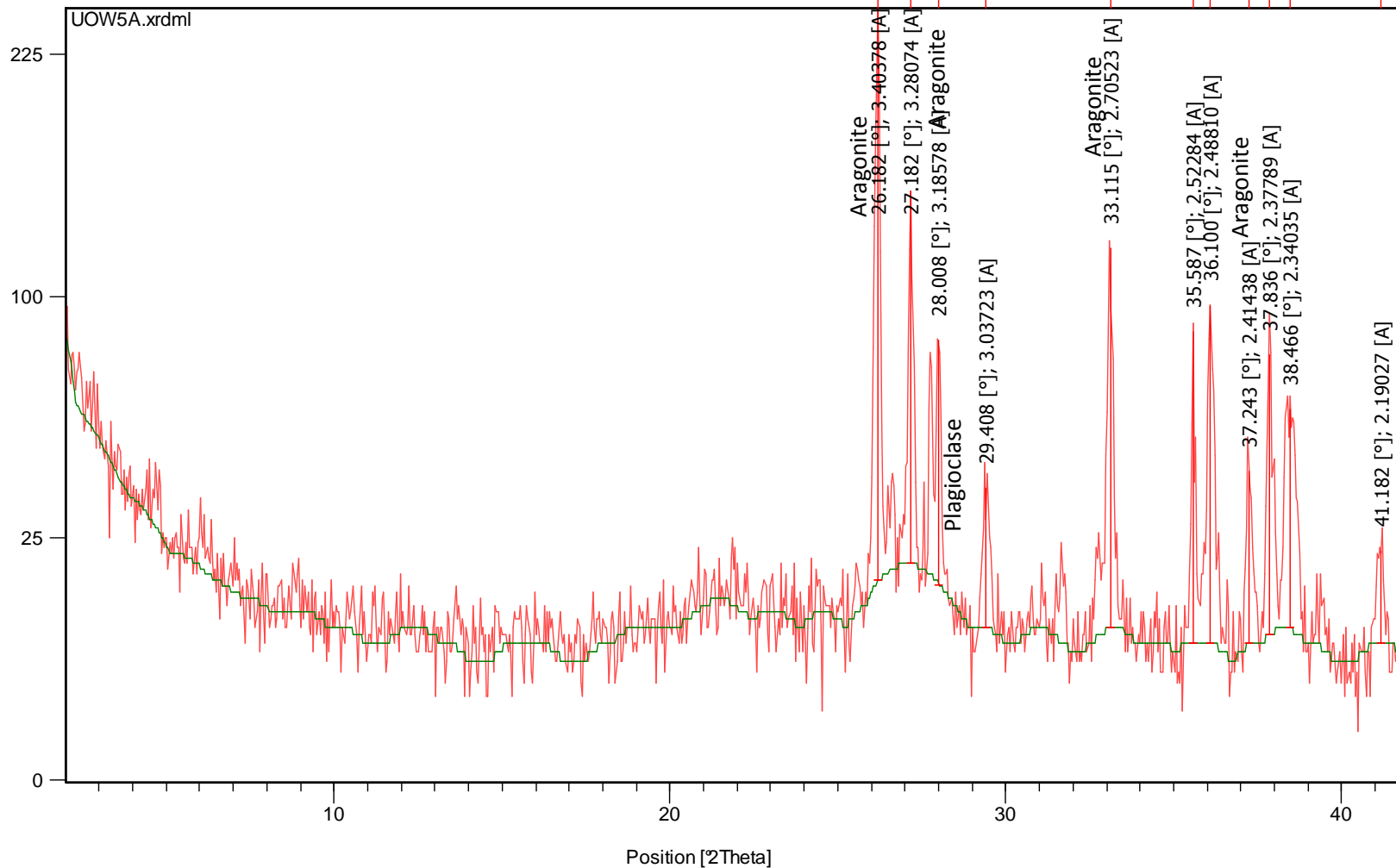


Selected Pattern: silica 00-033-1161

Residue + Peak List



Counts

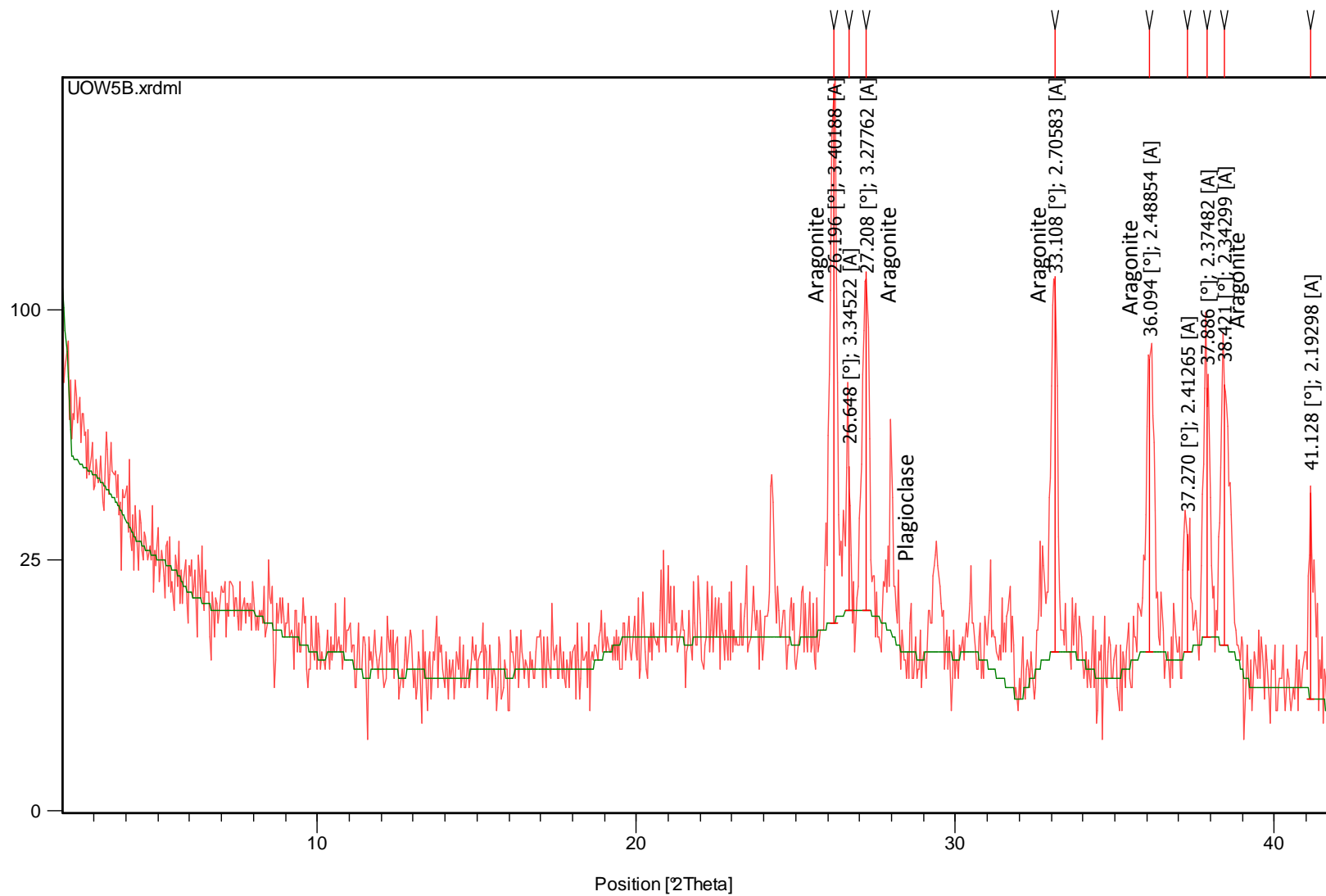


Selected Pattern: Calcite, syn 00-005-0586

Residue + Peak List



Counts

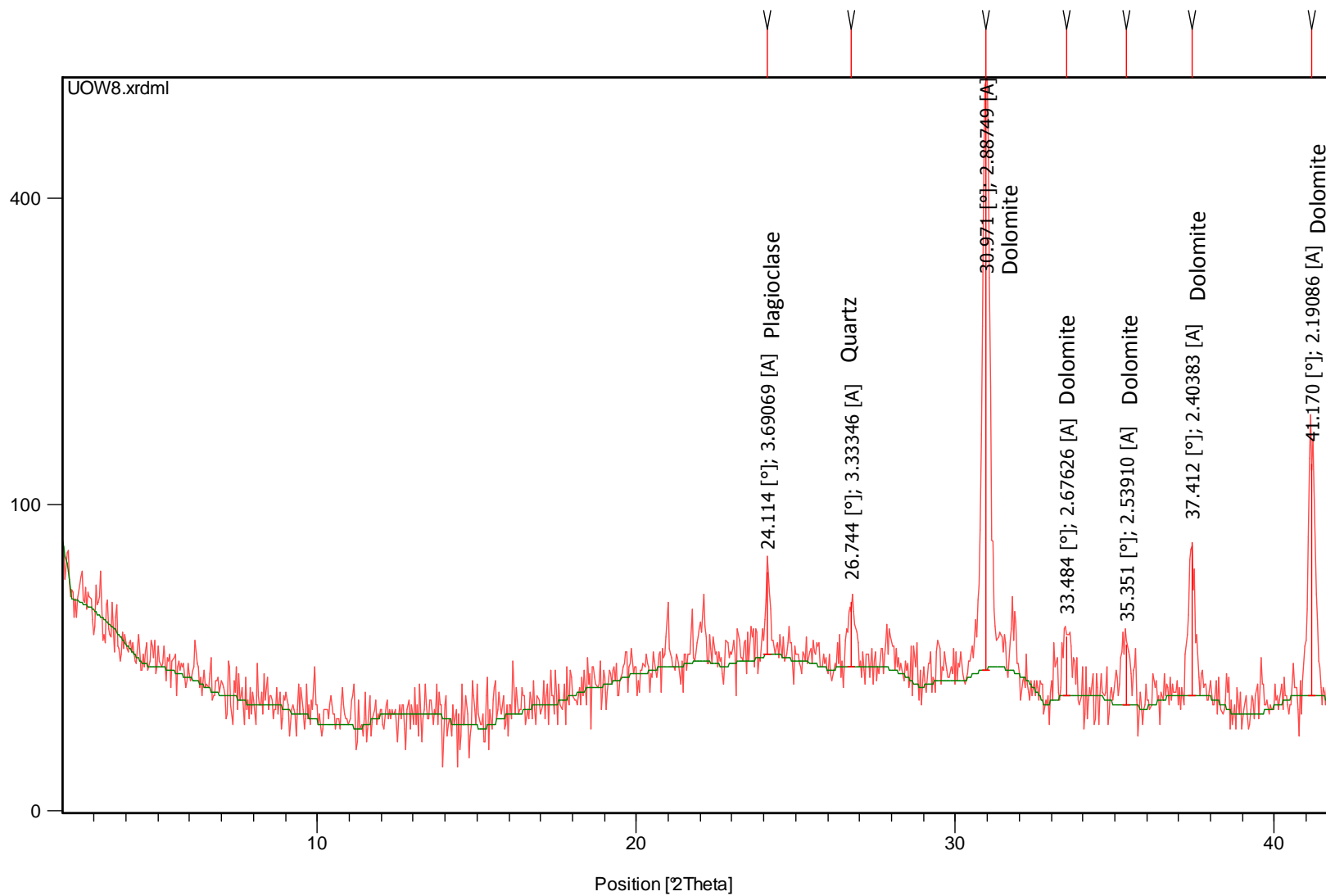


Selected Pattern: Quartz, syn 00-046-1045

Residue + Peak List



Counts

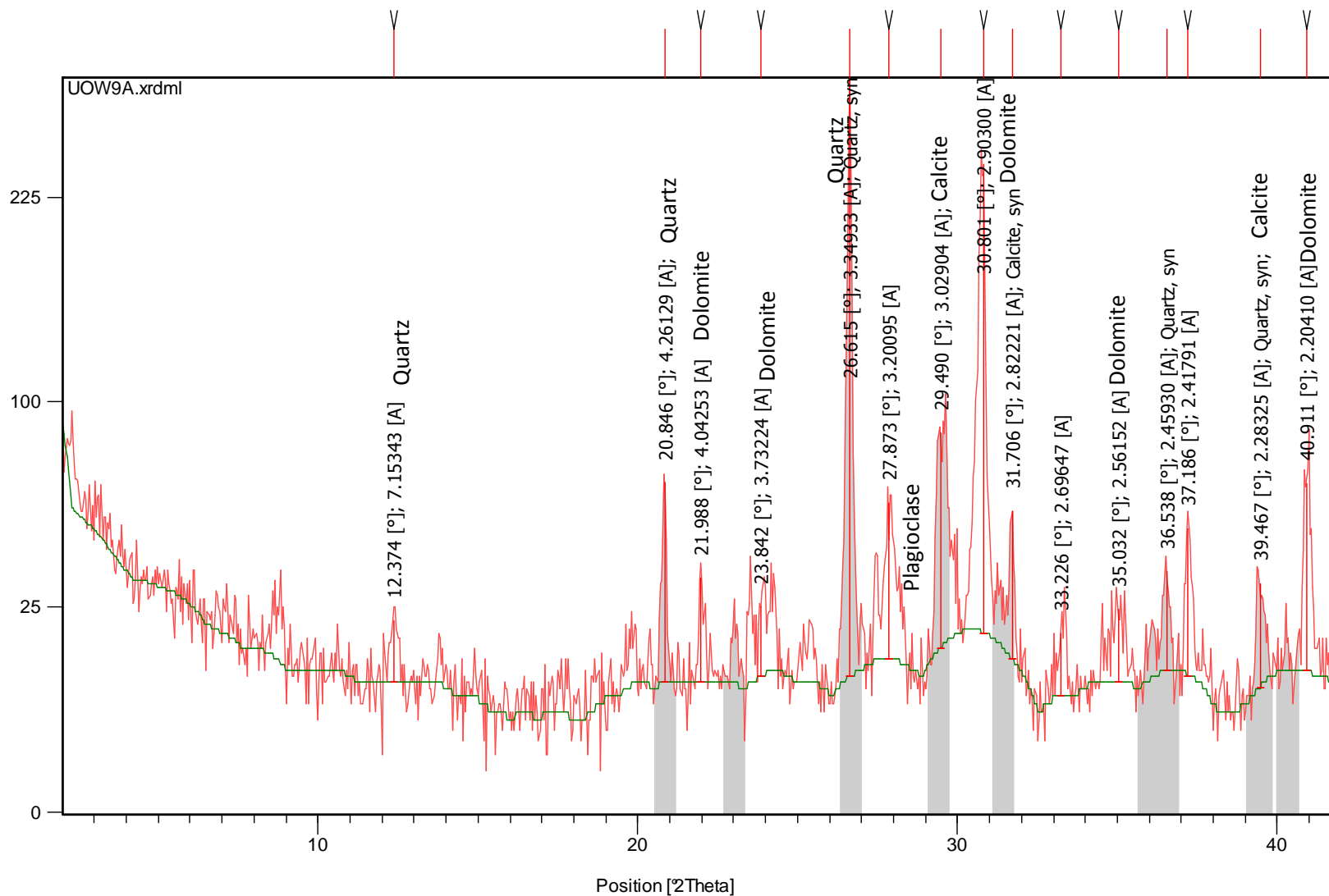


Selected Pattern: Quartz, syn 00-046-1045

Residue + Peak List



Counts

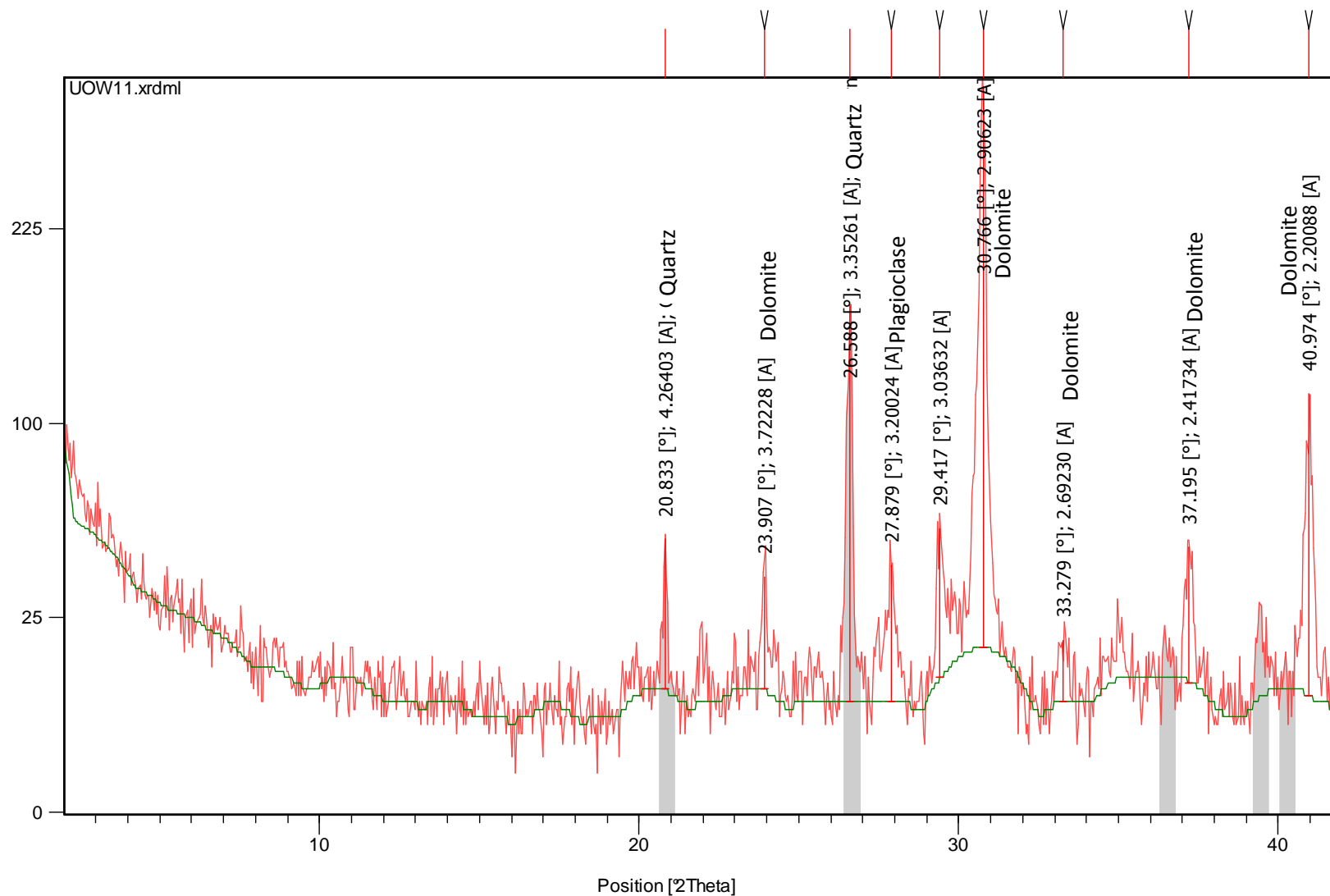


Selected Pattern: burnt ochre 00-033-0664

Residue + Peak List

Accepted Patterns

Counts



Selected Pattern: Calcite, syn 00-005-0586

Residue + Peak List

Accepted Patterns