

Topographic Legend

ROADS

- Road surface: asphalt (solid line), metal (dashed line), unmetalled (dotted line)
- Vehicle track: unmetalled (dotted line)
- Foot track: unmetalled (dotted line)
- National State Highway: (thick red line with 'S' symbol)

WATER FEATURES

- River, stream: (blue line with wavy edges)
- Riverbody: (blue line)

RELIEF FEATURES

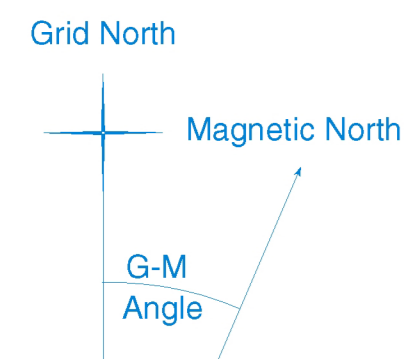
- Index contour: (dashed line)
- Intermediate contour: (solid line)
- Trig station beaconed, unbeaconed: (black triangle with 'x' or 'o')
- Elevation in metres: (number)
- Cliff, terrace: (line with 'x' or 'o' symbols)

MISCELLANEOUS

- Large buildings: (black rectangle)
- Residential area: (hatched pattern)
- Building: (black rectangle)
- Homesite: (black rectangle)
- Airstrip: (black rectangle with 'x' symbols)
- Mine, underground, opencast: (black 'x' symbol)

CULTURAL FEATURES

- Localities (over 200): (black dot)
- Localities (under 200): (black dot)
- Homesites: (black rectangle)
- Miscellaneous features and descriptive notes: (text)
- Alley: (dashed line)
- ROAD AND RAILWAY NAMES: (text)
- TRACK NAMES: (text)
- Trig identification numbers and names: (text)



TO GIVE A GRID REFERENCE ON THIS MAP
(To nearest 100 metres)

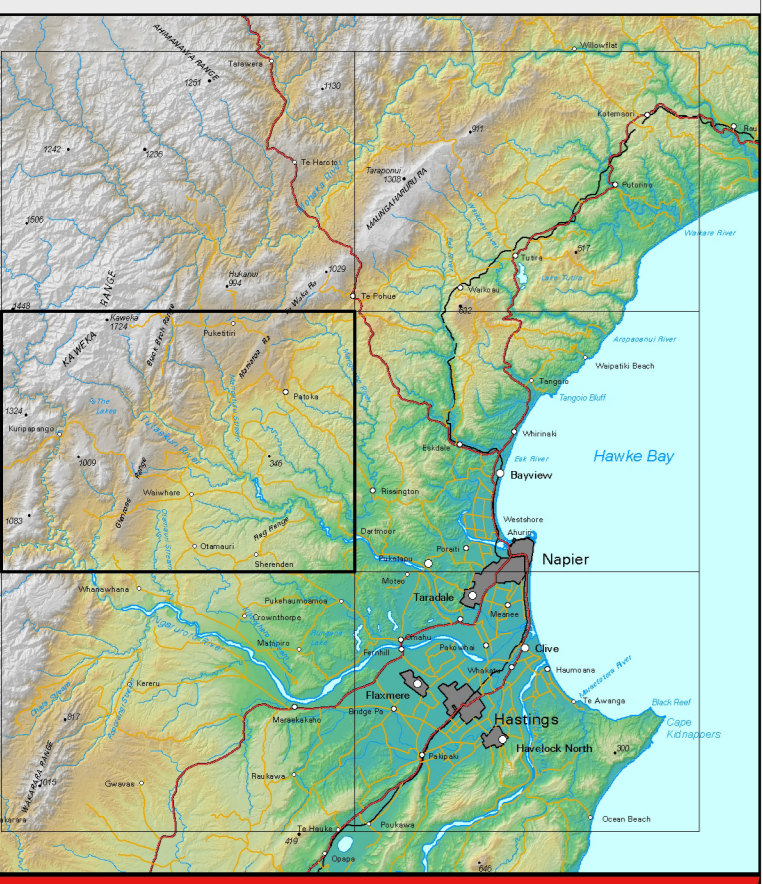
Designate the smaller figures of corner grid numbers first on the bottom edge.

SAMPLE POINT: 76500	
East	West
Locate first VERTICAL grid line to LEFT of point and read figure labelling the line in either the top or bottom margin or across the centre of the map.	Locate first HORIZONTAL grid line to BELOW of point and read figure labelling the line in either the left or right margin or up the centre of the map.
Estimate tenths eastward from grid line to point.	Estimate tenths northward from grid line to point.

SAMPLE REFERENCE (Quota sheet number first): V21 043852

This map is drawn on the New Zealand Map Grid Projection, a minimum error conformal projection. The grid is the New Zealand map grid showing coordinates in metres in terms of the Geodesic Datum 1949, based on the International Hayford Spheroid.

THE VERTICAL INTERVAL BETWEEN THE CONTOURS IS 20 METRES
HEIGHTS ARE ABOVE MEAN SEA LEVEL

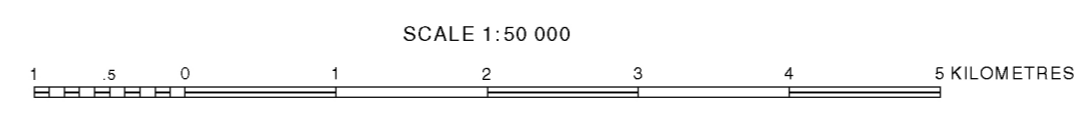
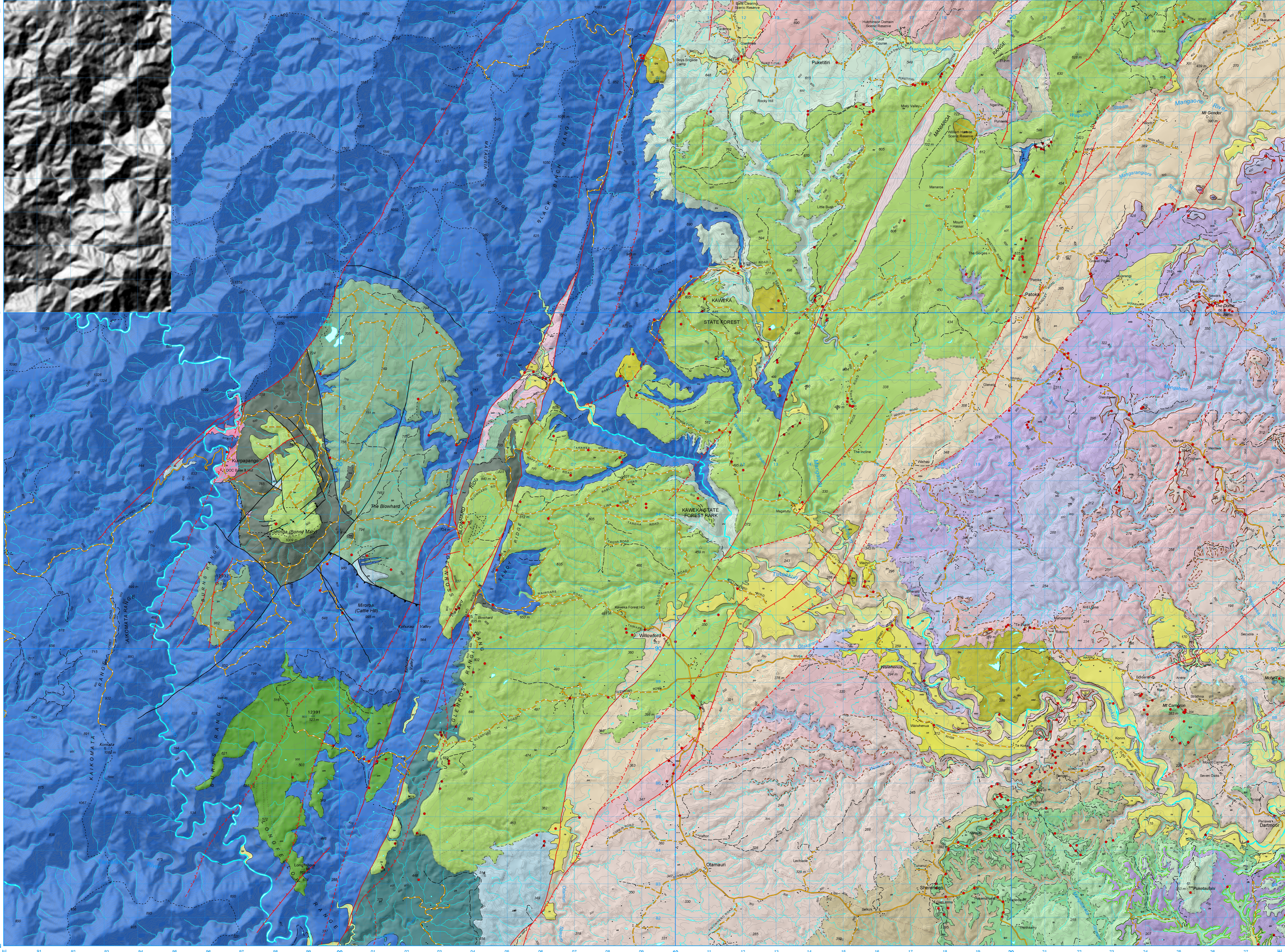


Kyle J. Bland* and Peter J.J. Kamp 2014

Bland, K.J. and Kamp, P.J.J. 2014; Hawke's Bay forearc basin (eastern North Island, New Zealand): Stratigraphy, biostratigraphy, chronology, geological maps and paleogeography. Ministry of Business, Innovation and Employment, New Zealand, unpublished Petroleum Report PR4883, 66 p.

Department of Earth and Ocean Sciences
University of Waikato

* Current address: GNS Science



BIBLIOGRAPHIC REFERENCE

Bland, K.J. and Kamp, P.J.J. 2014; Hawke's Bay forearc basin (eastern North Island, New Zealand): Stratigraphy, biostratigraphy, chronology, geological maps and paleogeography. Ministry of Business, Innovation and Employment, New Zealand, unpublished Petroleum Report PR4883, 66 p.