



THE UNIVERSITY OF
WAIKATO
Te Whare Wānanga o Waikato

Research Commons

<http://researchcommons.waikato.ac.nz/>

Research Commons at the University of Waikato

Copyright Statement:

The digital copy of this thesis is protected by the Copyright Act 1994 (New Zealand).

The thesis may be consulted by you, provided you comply with the provisions of the Act and the following conditions of use:

- Any use you make of these documents or images must be for research or private study purposes only, and you may not make them available to any other person.
- Authors control the copyright of their thesis. You will recognise the author's right to be identified as the author of the thesis, and due acknowledgement will be made to the author where appropriate.
- You will obtain the author's permission before publishing any material from the thesis.

MANA WHENUA, MANA TANGATA:
RAUKAWA AKE, RAUKAWA IHO

He tuinga whakapae
kua tukuna hei whakatutuki
i ngā whakaritenga
o
Te Tohu Paerua
i
Te Whare Wānanga o Waikato
nā
TĀMATI PENI



THE UNIVERSITY OF
WAIKATO
Te Whare Wānanga o Waikato

2013

Ariā

Mā te whakapapa, ngā tohu whenua, ngā pae whenua, ngā mātākōrero, ngā kōrero tuku iho, ka whakaterere te takenga mai o ngā ariā me ngā mātāpono o Raukawa. Ina te matapakinga, ka tīkaro hoki i ngā āhuatanga o tuawhakarere me ngā āhuatanga o te ao hurihuri kia tūhono i ngā matapakinga he aha rānei te Raukawatanga me te pātai he aha hoki ōna pānga ki te ao whai muri ake i te taunaha i ngā take Tiriti. Nā te whānui rawa me te kaha tīni haere o te taiwhanga nei, ka whakawhāiti te rangahau ki ngā whakamautanga o Raukawa ki ngā pae whenua tawhito, ā, ka whītikihia te aronga ki nāianeī, ki te ao hurihuri.

Abstract

I seek to explore the ideological grounding of Raukawa through whakapapa, land marks, boundaries, oral history, and tradition. Through this, a simultaneous extraction of traditional and contemporary themes are used to bridge new and old ways of being and what impact this has on being Raukawa in a post-settlement setting. Because of the vastness and changing nature of this environment, I narrow my focus to how Raukawa maintained traditional boundaries and draw on its relevance to modern Raukawa development today.

He mihimihi

Maringi noa ngā roimata ki a koutou kua unuhia ki te āhuru mōwai, moe mai, moe mai, moe mai rā.

Ka āhukahuka, ka whakamihī, ka whakamānawa i te tini nā rātou ēnei kōrero i whakarato. Kei ōku tūpuna, ōku kaumātua, ōku rangatira, me ōku pakeke, ka tūpou te pane i runga i te whakaiti kua whakaohu ngā hutukawa e mumura ai ngā kupu e takoto iho nei.

E ngā mana, e ngā reo, tēnā tātou katoa.

Koia kei a koutou ngā kaihautū o te waka, te mana whakahaere kua hīa ake ki te whakatumatuma i ngā taero o te ao hurihuri, otirā, te ao tawhito. Kāre he mahi i tua atu i ā koutou ki te hiki i te mana me ngā putanga whaiora o te iwi whānui.

Whāia rā ngā rerenga mihi ki Te Pua Wānanga ki te Ao, ki Te Whare Wānanga o Waikato, ki taku kaiwawao, nā koutou i whāriki te ara kia tika ngā mahi, kia ea ngā mahi, kia kawē ngā mahi ki tōna ūnga.

Kua koke mai te rangitāmirotanga o onamata me anamata hei hiwa, hei painga mō tēnei reanga. Nei aku rau tōtā, aku waikamo, aku kuru wānanga mō ngā mātanga me te tūmanako he maramara hua o roto mō te kaipānui.

I kō iho kōrua te whakahā o te ate, te mokowhiti o te manawa, te tau o te wairua, te puna monoa; e kore e waha i te kupu ngā pupū hihiri ki te hoki turuturu mai ki aku maihi.

Kua tukuna!

Rārangi Upoko

Ariā	ii
Abstract	ii
He mihimihi	iii
1.0 TE TĀHUHU	1
1.1 HE WHAKATAKINGA	1
1.2 NGĀ UPOKO O TE TUHINGA	2
1.2.1 Upoko Tuatahi - Te Tāhuhu	3
1.2.2 Upoko Tuaraua - Raukawa, i haere mai koe i whea?	3
1.2.3 Upoko Tuatoru - Mana Whenua, Mana Tangata	3
1.2.4 Upoko Tuawhā - Ngā Wā o Mua	4
1.2.5 Upoko Tuarima - Te Whanaketanga	4
1.2.6 Upoko Tuaono - He Wetewete, He Whakatepe	4
1.2.7 Upoko Tuawhitu - Te Whakakapinga Ake	5
1.3 ARA RANGAHAU	5
1.3.1 Hei Whakaaroaro	5
1.3.2 Kawenga Tikanga	6
1.3.3 Kawenga Rangahau	6
1.3.4 Kawenga Mahi	7
1.4 TE RANGAHAU ME NGĀ TIKANGA RANGAHAU	7
1.5 NGĀ ĀHUATANGA RANGAHAU I TE HĪTORI	10
1.6 TĀTARINGA PUKAPUKA	12
1.6.1 Whakaawenga Reo, Whakaawenga Tikanga	12
1.6.2 Whakaawenga Taiuiwi	13
1.6.3 He Tūtakinga Ahurea	13
1.7 HE WHAKATEPE	16
2.0 RAUKAWA, I HAERE MAI KOE I WHEA?	18
2.1 HE WHAKATAKINGA	18
2.2 KUPE	19
2.3 TAINUI WAKA	21
2.4 TĀWHAO	22

2.4.1 Ko Tūrongo rāua ko Māhinaarangi	22
2.4.2 Ngā uri a Raukawa rāua ko Tūrongoihi	24
2.4.3 Wairangi rāua ko Whāita	25
2.5 HE WHAKATEPE	26
3.0 MANA WHENUA, MANA TANGATA	27
3.1 HE WHAKATAKINGA	27
3.2 KO TE TUAKIRI	27
3.2.2 Mana whenua	27
3.2.3 Rohe	28
3.2.4 Whenua	28
3.3 Ō RAUKAWA PAE WHENUA	28
3.3.1 Te Kaokaoroa o Pātetere	31
3.3.2 Wharepūhunga	32
3.3.3 Maungatautari	32
3.3.4 Te Pae o Raukawa	33
3.4 NGĀ HEKE	34
3.4.1 Te Hekenga Tuatahi o Raukawa c1821	34
3.4.2 Te Heke Kārere c1825	36
3.4.3 Te Hekenga Kariritahi c1827	38
3.4.4 Te Heke Mai-i-raro c1828	38
3.5 TE KŌTI WHENUA MĀORI	40
3.5.1 Ngā Whakawākanga	40
3.5.2 Te Hokohoko Whenua	41
3.5.3 Ngā Porohanga o Maungatautari	42
3.6 HE MĀTAI TAKE TĀWĀHI	45
3.6.1 Te Rōpū Hiona	45
3.6.2 He Mahere Tāuteute Whenua	46
3.6.3 Te Taupatupatu Nui	47
3.7 HE WHAKATEPE	47
4.0 NGĀ WĀ O MUA	48
4.1 HE WHAKATAKINGA	48
4.2 KO TE PAKANGA	48

4.2.1 Ngāti Kahupungapunga.....	48
4.2.2 Ōrākau	51
4.3 NGĀ TĀTAI HONO.....	54
4.3.1 Kauwhata me Tūkorehe	54
4.3.2 Te Atainutai me Te Rangīta	57
4.4 HE WHAKATEPE	66
5.0 TE WHANAKETANGA.....	68
5.1 HE WHAKATAKINGA	68
5.1.1 Hauora, Mātauranga, Pāpori	68
5.2 RAUKAWA AKE.....	69
5.2.1 Mana Whakahaere.....	69
5.2.2 Atu i te Mana Whakahaere	74
5.3 NGĀ TAERO O TE AO HURIHURI	75
5.3.1 Kia Mahara, Kia Mau	75
5.4 NGĀ TAKE TIRITI	76
5.4.1 Ngā Taunaha	77
5.5 TE TURE.....	78
5.5.1 He Hononga Whai Niho.....	79
5.5.2 Kāwanatanga Rohe	79
5.6 HE WHAKATEPE	80
6.0 HE WETEWETE	81
6.1 HE WHAKATAKINGA	81
6.2 TE WĀHI O TE WHAKAPAPA	81
6.3 MANA WHENUA, MANA TANGATA.....	82
6.4 NGĀ HUA ME NGĀ MATE.....	83
6.5 TE ARA KEI MUA.....	85
6.5.1 He Whakahakune.....	85
6.6 HE WHAKATEPE	86
7.0 HEI WHAKAKAPINGA AKE.....	87
7.1 HE WHAKATAKINGA	87
7.2 NGĀ KAUPAPA I WHITIA.....	87

7.3 HE URUPARE.....	88
7.4 NGĀ WHĀITITANGA	89
7.5 MŌ ĀPŌPŌ	89
7.6 HE WHAKATEPE	90
RĀRANGI WHAKAMĀRAMA.....	91
NGĀ WHAKAPUAKANGA	93
TAKETAKENGA MATUA.....	93
TAKETAKENGA TUARUA	94

Mahere, Whakapapa

Mahere 1: Te rohe o Raukawa.....	30
Whakapapa 1: Hoturoa ki a Raukawa	19
Whakapapa 2: Kupe ki a Raukawa	20
Whakapapa 3: Hoturoa ki a Tūrongoihi.....	24
Whakapapa 4: Ngā uri a Raukawa	25
Whakapapa 5: Ngā uri a Takihiku	25
Whakapapa 6: Ngā uri a Kurawari	25
Whakapapa 7: Te hononga o Raukawa ki a Tokomaru.....	50
Whakapapa 8: Te hononga o Raukawa me Tūwharetoa.....	64

1.0 TE TĀHUHU

He maringanui nō tōku whakatupuranga ki te noho i waenga pū i ngā whanaketanga o te ao hurihuri e noho nei tātou. Nō te mana o ngā whanaketanga o ngā iwi me te tautoko o ngā rawa nō ngā taunaha Tiriti, kei te tupu te mana o ngā iwi o te motu ki te tātaki i ngā kaupapa me ngā āhuatanga whakahaumanu, hapori, mātauranga, reo, tōrangapū anō hoki. Heoi anō, kua tīni haere te aronga nui i ngā rautau, ā, kua rerekē haere ngā whāinga o ia whakatupuranga e ai ki ngā āhuatanga o taua wā tonu. I pēwhea te hua mai o tēnei āhuatanga rerekē? He hononga ōna ki te whakamautanga a tōku nei iwi ki ōna pae whenua tawhito? He aha kē ērā hononga?

1.1 HE WHAKATAKINGA

He whakaritenga tēnei i ngā huatau kua tiritiria ki te papa aromatawai o te tohu paerua. Ka rārangitia ētehi āhuatanga mana whenua e mōhiotia nei ki te pae whenua o te iwi o Raukawa.¹ Ka whakatakoto i ēnei kōrero ki te kimi, ki te whakaraupapa i ētehi o ngā āhuatanga kua tautoko i te pupuru o Raukawa ki tōna mana whenua, ā, ko ngā whanaketanga e āhwiowhio ana mohoa noa nei. Nō reira ko te pātai o tēnei rangahau hei pātai whakautu māku,

I mau pēwhea nei i a Raukawa ana pae whenua tawhito, ā, he aha hoki ngā pānga ki te whanaketanga o Raukawa i ēnei rā, haere ake nei?

Ko tāku e whakapae nei he nui ngā āhuatanga i whakaawe ai i a Raukawa i roto i ana whakahaerenga me ana kaupapa whanake ki roto i te rohe, ki waho atu i te rohe otirā ki ngā para whakawai i puea ake i ngā āhuatanga hou pērā i ngā kokoraho tiriti kātahi anō ka rewa ake. He hīanga ki te kite, ki te whakamārama i ngā whakaaro, ngā waiaro, ngā whakapae, me ngā

¹ E ai ki ngā pakeke, ka whakahuatia ko 'Raukawa' te ingoa o te iwi e noho nei i te puku o te ika. Ka 'Ngāti Raukawa' mehemea e kōrerohia ana te iwi whānui ki raro i te maru kotahi, arā a Raukawa ki te Tonga me Raukawa i te puku o te ika.

mātāpono kāre e taea te torotoro atu. Ā, mā ngā pātai rangahau nei e whakapuaki te huarahi rangahau hei takahanga mō te kōrero whakapae.

Kei ngā pou kōrero e tāpae ana ngā kai kua hīa ake i ngā wai whakarētō, i ngā rokirokinga mahara o tēnā, o tēnā. Hei whakatepe ake, kua tirohia te mātotoru o ngā tuhituhinga o te wā, ā hoki atu ki ngā wā kua taha ake nei, ki ngā kai e kaingia ana, e horahia ana, e whakatōkia ana, e hauhakehia ana i te puna mātauranga o te ao hurihuri me te ao kōwhatu. I runga i ngā āhuatanga o te wā, mārakerake te kite atu, e tupu ana te pitomata o ngā āheitanga o tērā iwi, o tērā iwi. Nā reira e mate ana te ngākau ki te kite i ngā hua ka puta mai i ngā taniwha e whaiwhai tonu nei i tā rātou anō i kōingo ai.

Toko ake te hīkaka ki te arotake i tēnei kaupapa i ngā mahi i tutuki mō te iwi, ki te ao rangahau o ngā kokoraho tiriti me te taiwhanga mātauranga hoki. Ko te tikanga e kawē ana i tēnei kōrero whakapae ko te hiahia nō mua ki te titiro ki ngā kohikohinga kōrero kua whakatōpūngia i te whānautanga mai o te mana whakahaere o Raukawa, ā, ka hiahia anō hoki ki te ruku atu ki ngā kōrero kua waihangatia i ngā tini whakahaerenga o ngā taunaha tiriti. Ko te tāhū o ngā kōrero hei whāinga māku: ki te kimi he aha ētehi pānga o tuawhakarere ki roto i ngā whanaketanga o te iwi o Raukawa i ēnei rā nei. Nō reira ko taku mahi he whakautu i taku pātai matua, he whakatinatina hoki i ngā whakaaro i whārikihia ki taku whakapae kei runga ake nei.

1.2 NGĀ UPOKO O TE TUHINGA

He aronga kē tō ia upoko, engari kia pānui katoatia, ka puta mai he tirohanga whānui e tiu ana i te whakapapa, te tikanga mana whenua, ngā kōrero tuku iho mai rā anō, ngā hītori, me ngā whanaketanga o te ao hurihuri. Hei whakamahuki, e kore rawa e taea te whakaata ngā pae

whenua o Raukawa pēnā kāre e taki i te whakapapa o te iwi. Waihoki kāre e taea te whakapuaki ngā kaupapa whanake o te wā pēnā kāre e whai wāhi ki ngā pēhitanga i hora ki runga i te iwi Māori. I te hiku o te topa, ka tuitui, ka raranga i ngā rau kōrero kia pīata mai ngā herenga whītau i te upoko wetewete kōrero. Hei reira whakahiato ai te kiko o ngā whītau kua whakarākeihia nei.

1.2.1 Upoko Tuatahi - Te Tāhuhu

Ko te tikanga o te upoko tuatahi, he whakataki i te mata o ngā kōrero hei mahere mō te kaipānui, koia ka huakina te whakatakotoranga o ngā upoko o te tuhinga. Ka whakaraupapa hoki i te kaupapa rangahau, tōna pūtake, me te ara rangahau. I te upoko nei ka whakapuaki whakaaro nō ngā kaikōrero o te takiwā rangahau nei.

1.2.2 Upoko Tuaraua - Raukawa, i haere mai koe i whea?

I tēnei upoko o te tuhinga, ka āta wetewetekina ko wai a Raukawa, kei whea te rohe i nōhia e Raukawa me āna uri, ā, he aha ngā āhuetanga i pēnei ai. Ka tirohia ngā kōrero tuku iho a Raukawa e pā ana ki te takenga mai o te waka me te hekenga mai o ngā tūpuna i Hawaiki. Kātahi ka huri atu ki ngā kōrero mō ngā mātua o Raukawa, a Tūrongo rāua ko Māhinaarangi, heke iho ki ngā uri a Raukawa me ētehi o ā rātou whakanekehanga.

1.2.3 Upoko Tuatoru - Mana Whenua, Mana Tangata

I tēnei upoko, ka titiro ki ngā rohenga ake o Raukawa, ko tōna iti, ko tōna rahi. Ko te whakaaturanga o te rohenga tētehi o ngā whakapaparanga tuakiri o te iwi e tirohia ana. Ka whakaputaina tētehi pūmanawa mana whenua i te rārangi heke ki te tonga. Mō te hononga o te mana whenua

me te mana tangata, ka tikina te whakaawenga Karauna o te kōti whenua o te rau tau tekau mā iwa. Ka whakatairite atu i tēnei horopaki mana whenua ki tētehi tauira ki tāwahi kia māhorahora ai ki āhuatanga ahurea kē me ngā momo tai whakaaro o konei. Heoi anō tā te kairangahau, he tiki atu, he whakahiato i ngā whakakai hei whakarākei i te tuhituhinga nei.

1.2.4 Upoko Tuawhā - Ngā Wā o Mua

Kei tēnei upoko, ka whakaraupapa he kōwhiringa kōrero tuku iho nō Raukawa. He tirohanga ki ngā wā o mua mā roto i ngā mahi a ngā tūpuna. Ka kōrerohia ētehi o ngā pakanga i whawhaingia e ētehi o ngā uri o Raukawa. Ka kōrero hoki mō ngā honohononga ki tērā iwi, ki tērā hapū. Ko te takenga mai o ngā manga whakapapa kua tupu mai i te wā pakanga me te wā i houhia te rongō. Mā tēnei upoko e whakakōrero ngā herenga o Raukawa.

1.2.5 Upoko Tuarima - Te Whanaketanga

Mohoa noa nei te tino aronga o te upoko nei. Ko te whanaketanga-ā-iwi te ihu, ā, ka arotakengia kei whea te ahunga o Raukawa i te ao hurihuri, ko wai a Raukawa i ēnei wā, ā, he aha ngā mahi whakawhanake o te mana whakahaere o te iwi. Ka ruku pāpaku hoki ki tētehi kōwhiringa mahi nō roto mai anō i te hapori hei whakatairitenga atu ki ā te mana whakahaere. Ka titiro hoki ki ngā wero o te wā, arā te ākinga o ngā taunaha Tiriti me te wāhi o te iwi i roto i te taiwhanga ture e whanake haere nei i te ao, i te pō.

1.2.6 Upoko Tuaono - He Wetewete, He Whakatepe

I te upoko nei, ka āta wetewete i ngā kikokiko me ngā whakakitenga o ngā kōrero kua tutuki i ngā upoko. I te whakatōpūtanga o ngā kōrero nei, ka hikina ake he putanga whakaaro kia whakautu i te pātai nui o te kōrero

whakapae nei; he aha ētehi pānga o ngā āhuatanga o tuawhakarere ki te whanaketanga o Raukawa i te ao hurihuri.

1.2.7 Upoko Tuawhitu - Te Whakakapinga Ake

He whakakapinga tēnei hei kīnaki i te kōrero whakapae, ko tōna whāinga kia pūrangiaho tāua tahi i ēnei kōrero.

1.3 ARA RANGAHAU

1.3.1 Hei Whakaaroaro

I runga i ngā āhuatanga kua raupapa, he whiriwhiringa whakaaro rangahau e kaha whakaarohia ana. Ka whakarārangi i ēnei whakaaro ki raro iho kia mau tonu ki te tauihu o te kōrero whakapae nei.

Tē tīkaro noa i ngā kōrero me ngā hanganga whakaaro kua tāia ki ngā pukapuka. Kia mana ai ōna kikokiko, ka hīa ake he pitopito kōrero nā ōku kaumātua – ka whakatakoto he kōrero puiaki nō ngā waha a kui mā, a koro mā. He kōrero anō hoki ka puea ake i ngā whakaaro me ngā tirohanga o te reanga o Hirini Mead (2003), Ranginui Walker (1990), Linda Smith (1999), rātou ko Charles Royal (1994) kia whakatairite i te tirohanga tawhito ki te tirohanga o te ao hurihuri. Ko te hanganga me te whakatakotoranga e hāngai ana ki ngā kawa o te whare wānanga. Heoi anō, e whakakotahi ana i ngā ao e rua ki te whakaraupapa i ngā mātauranga kua katohia mai i tēnā moka, i tēnā moka, kia māhorahora ai, kia whai māramatanga hoki.

Koia te reanga whakaaro e kawea ana i te taiwhanga o tēnei tuhinga. Ko tōna tikanga, he kōrero mō ngā momo whanonga rangahau e āki ana i te

kōrero whakapae nei – ko ētehi o ngā tikanga e āwhiowhio ana i te kaupapa, e whakahaere ana i te kaupapa, e whakaahua nei hoki i tōna ariā. Ko te mahi matua, he whakatakoto i ēnei māramatanga ki te whakaahua i te hanga o te mahi rangahau. Mā konā e pūioio ai tōna tuarā, kia kikokiko tonu ngā tangai o roto.

1.3.2 Kawenga Tikanga

Ka whakamahi i ēwhea tikanga me ēwhea mātauranga ki te kimi i te whakautu ki tā te kairangahau e pātai nei? Ka tiki atu i ngā puiaki e noho ana ki roto i ngā puna kōrero mō Raukawa me ngā mātāpuna kōrero tuku iho o Raukawa kua whakairi hei torotoro mā ngā uri whakaheke. Ka whakarangatira i ngā kōrero rā i runga i te āhuetanga kei te ruia ngā kōrero tuku iho me ngā rau whārangi o tēnā pukapuka, o tēnā whakaputunga. Mā ēnei taonga e kīnaki ngā tuhituhinga e whai ake nei. I te whakatōpūtanga, ko ngā pūrongo kōrero tuku iho i kōkiritia mō ngā taunaha tiriti ko ngā kōrero mō te raupatu, te tuku whenua, te pakanga, me ngā momo āhuetanga tawhito mō Raukawa ake. E ai ki a Royal (1994, p. 14), ka whai hua ngā huānga ki te whārikitang o te kōrero whakapae nei – kia whakatupu i te mātāpuna kōrero, kia whakatairanga i ngā kōrero o tuawhakarere, ā, kia rere tonu te mātanga reo. Waihoki, ko te tikanga mō te whakamahi i ēnei mātāpuna, he whakanui, he whakamana i ēnei taonga kua whītikingia ki ngā whārangi pūrongo kei noho mokemoke ki te ao mārama, kei pungarehutia.

1.3.3 Kawenga Rangahau

Kua whakatūria ngā pūmanawa me ngā tikanga e arataki ana i te mahi. Mō runga i ngā āhuetanga o te kaupapa nei, ka whakamahi i te whakahaerenga ine kounga. Pēnā ka whakamahi i tēnei momo whakahaerenga, ka taea te kapo ngā kōrero i tua atu i te kanohi o te kupu, ko ngā whakaaro, ko te mauri, ko te wairua o te kōrero tē kitea atu i te whakahaerenga ine tātai (Metge, 1990; Smith, 1999; Denzin & Lincoln,

2005). Ko te Kaupapa Māori tōna ritenga, koia tētehi ara rangahau e whāia ana mō te mahi nei i runga i tōna rerenga tahi me ngā momo whakaaro me ngā tirohanga o ngā iwi taketake. Ka rerekē te waiaro mehemea he ine tātai kē te huarahi e takahia ana, ā, he tātaitai kē te reanga mahi.

1.3.4 Kawenga Mahi

Tērā tērā, ka puta te whakaaro mō ngā hua me ngā mate o te whakataui i tēnei kaupapa hei whakapaetanga. Tērā pea, ko te tata o te kaupapa ki te kaituhi tētehi mate o te mahi, i te mea ka aro kē atu ki ngā āhuatanga e ngākaunui ana, e mātua mōhio ana te kaituhi. Engari anō kua āta whakaaroarotia te hanganga o te kōrero whakapae me te whakataui he aha rawa ia e arotakengia ana. Kāre he take mō te aro ki ngā āhuatanga pērā i tērā i te mea ko te koura nui, ko te whakautu i te pātai. Atu i tēnei, kāre he take anō hei whakamānukanuka i te hinengaro, i ngā mahi anō hoki.

1.4 TE RANGAHAU ME NGĀ TIKANGA RANGAHAU

Kua tohu ake te huarahi Kaupapa Māori hei ara rangahau. I raro i ngā whakapaparanga Kaupapa Māori, he rārangi whakaritenga tā Walsh-Tapiata (1998, p. 249) e hāngai torotika ana ki te momo mahi nei:

- 1) Me āta whakaraupapa tikanga e te tangata e kōkiri ana te rangahau i te taiwhanga iwi me te taiwhanga hapū;
- 2) He waiaro kiriweti tō te Māori ki ngā kairangahau me te reanga whare wānanga. Ka titiro mai rātou me he wairua kawa i te iti, me he whakawā i te rahi.

Nō te taenga mai o tauīwi, kua horo ngā tirohanga me ngā tikanga Pākehā i te hītori Māori me ngā rangahau e pā ana ki te Māori. Koia i hua ake ai ā tērā iwi kōrero, ā tērā iwi kōrero hei whakatōpūtanga hītori Māori mō te motu whānui (Royal, 1993, p. 13). I ngā wā i ngana te kaituhi ki te

whakauru i ngā tikanga Māori, ka mate te Māori i te kino o te hanga o te kōrero i puta mai (Walsh-Tapiata, 1998, p. 249). Heoi anō, i tupu tonu te mana o taua kōrero i runga i te mea i whānui te rongu o taua whakaputunga (Royal, p. 13).

Kei runga noa atu ā Te Awekōtuku (1991) rāua ko Mead (1996) whakawai mō tēnei mea te rangahau; ehara i te mea, nō te Pākehā noa iho te ao rangahau, nōna noa iho ngā whakahaerenga rerekē e tātaki ana i te ao rangahau, me te pēwheatanga hoki e kōkiri ai i te mahi rangahau e hiahiatia nei te whakatutuki – koirā te mea hou ki te ao Māori (Walsh-Tapiata, 1998, p. 249). Nā reira ka whai hua ki te aro ki te ao Māori, arā, ko ōna tikanga maha, ko ana tirohanga maha, ko ana wheako mīharo e whakaawe nei i ngā mātauranga me ngā mōhiohio.

1.4.1 Kaupapa Māori

Kia whakatairanga i tā Durie (1996) kōrero mō te kairangahau Māori o te ao hurihuri; i te wā i puta āna kōrero, i te kimi tana whakatupuranga i ētehi tikanga rangahau e hāngai pū nei ki te Māori; me te whāinga matua kia whai wāhi te tangata Māori i te hanganga mai o te mahi rangahau; ko te whakanui i ngā tirohanga Māori tētehi atu aronga matua, ā, ka whakaata i te momo huarahi o te kaupapa Māori, i ngā ritenga me ngā rerekētanga maha o te ao Māori.

Ka whakamārama a Irwin (1994) i te kaupapa Māori kia pēnei:

“...research which is ‘culturally safe’, which involved the ‘mentorship’ of kaumātua, which is culturally relevant and appropriate, while satisfying the rigour of research, and which is undertaken by a Māori researcher, and not a researcher which happens to be Māori” (p. 199).

He tauritenga tō Irwin waiaro ki ā Bishop (1996) kōrero, hei tāna, ka wero te Kaupapa Māori i te ākinga ahurea kua whakatangatawhenuatia i te rokiroki o te mahara; e hāngai ana ki te oranga o te iwi, te taiwhanga ohanga, ngā take tōrangapū, me te taiwhanga mātauranga (Bishop, p. 12). Engari me pēwhea e tutuki ai te whāinga nei?

E kī ana a Smith, ka aro te Kaupapa Māori ki mua, ki te pae tawhiti, ki te whanaketanga o ētehi tikanga whakahaere e whakapūmau ana i te Māoritanga i runga i te wairua whakahīhī (e meatia ana ki rō Bishop, 1996, p. 12). He maha ngā ariā Kaupapa Māori kua whakaputa i ngā tau: hei tā Soutar (1994), ko te mahi me te kōrero kanohi ki te kanohi; hei tā Royal (1993), me whakanui te marea te mana o tuawhakarere, o nāianeī, o āpōpō anō hoki; hei tā Irwin (1994), ka ārahi te ao Māori i te ao rangahau. Katoa tēnei kaupapa he kāhui whakaaro e whakaata nei i ngā mata rau o te kaupapa Māori.

1.4.2 He Āhuatanga Rangahau Iwi

Ehara te rangahau iwi i te tāruatanga noa o ngā kōrero-ā-iwi, he whakaataata tēnei i te rerekētanga o ngā waihangatanga whānau, hapū, iwi e haere ake ana (Walsh-Tapiata, 1998, p. 251). I te ao hurihuri nei, kei te tīni, kei te tupu, kei te whanake ēnei waihangatanga i ngā wā katoa. Ka anga te waiaro ki te huatau he hua o roto i te rangahau i ngā āhuatanga maha pēnā i te whaioranga me te hauora, waihoki ngā rautaki ohanga, rārangi uri, me ngā kokoraho Tiriti.

Kua whakawhāriki a Smith (1999) he mātāpono matatika-ā-ahurea ka taea te whītiki ki te horopaki hapori me te horopaki iwi anō hoki, koinei ngā pū whakaaro ki te whakapūmau i ngā matatika:

- i) aroha ki te tangata – ko te torotoro atu, ko te whai ture, ko te whakahokihoki whakaaro, ko te atawhai ki te hapori whānui mō te roanga ake o ngā mahi
- ii) kanohi kitea – ko te tūtaki i te tangata, kanohi ki te kanohi
- iii) titiro, whakarongo, kōrero – ko te whakamahi i te maha o ngā pūkenga i roto i te rangahau ki te whakawhitiwhiti whakaaro, kia āta haere, kia whai whakaaro ki ngā tāngata
- iv) manaaki tangata – ka whai waiaro ki te tiaki tika i te whānau, te hapū, me te iwi whānui – he whakanui i te mana o ngā tikanga me ngā kawa
- v) kia tūpato – e mōhio noa nei i te tikanga
- vi) kaua e takahi te mana o te tangata – e mōhio noa nei i te tikanga
- vii) kaua e mahaki – he mana nui tō te noho puku, kia hūmārie tō mātau (p. 120).

He maha ngā wāhanga whakawhitiwhitinga i waenga i te Komiti Matatika Tangata me ngā mātāpono ahurea i puta i a Smith. He tauira pai tēnei mō te mataruatanga o ngā momo mātauranga o te ao rangahau iwi. He whakaritenga e whai hua ai te tauhou, waihoki te tohunga, ā, ka tohu atu ki ngā take nui ka puta ake i te ara rangahau o ngā mahi.

1.5 NGĀ ĀHUATANGA RANGAHAU I TE HĪTORI

He tikanga e tātaki ana i te ao Māori, ā, he tikanga anō e tātaki ana i te ao whare wānanga. He kuare te kairangahau kāre e mōhio, kāre rānei e whai whakaaro ki tēnei āhua, nō reira me mātua mōhio te kairangahau ki ngā ritenga me ngā rerekētanga o ia ao i runga i te karanga o te kaupapa rangahau.

1.5.1 Mā Wai e Waha Ngā Kōrero

He āhuatanga e kitea i te taiwhanga rangahau hītori, ka takarure a Byrnes (2004) i te ngarohanga o ngā whakaaro Māori me te whakapuakitanga kē o ngā whakaaro Māori i te waha o tauwi (p. 76). Ka whakaara i te whakaaro nei i runga i te tomokanga o ngā tāwara tauwi ki te whakaaro Māori me te tirohanga Māori. Heoi anō, he poto noa iho te karawhiu a Byrnes ki te whakatika i tēnei mate, ka kī noa iho ia kia whai whakaaro te kairangahau ki tēnei take (p. 76). Ka whakapae kē a Royal (1994), waiho mā te Māori a Māori e whakatairanga ki te ao (p. 14). Ko te hanga whakaaro nei e mea ana, ka nui ake te raruraru mehemea he tauwi kuare tērā e whakawahawaha tino hē nei i ngā kōrero me ngā mātauranga.

1.5.2 He Ara Rangahau

Mō te rangahau ake, ahakoa pēwhea, i ahu mai tēnei mea i te tirohanga whāiti o ngā momo whakaritenga Pākehā (Mahuika, 2004, p. 11). Anō te uaua ki te whakakotahi i ngā whāinga o ngā whakaritenga Pākehā mō te rangahau me ngā whāinga o te mātauranga Māori. E ai ki a Smith (1999) he hua te rangahau nā te waimeha, ā, ko te rangahau te mātāpuna o ngā pakanga i waenganui i ngā tirohanga e kōrerotia nei (p. 2). Ko ō Mahuika rāua ko Smith waiaro, ki te pēnei tonu te hanga whakaaro, e kore e tau ngā tirohanga e rua. E mārama mai ana te tohutohu: me whakawhanake e te Māori ōna ake matatika ki te whakaputa rangahau i runga i ngā āhuatanga o tōna tirohanga.

Ka tīkaro i tō Tau (2001) whakapae, kia mirimiri, kia waihanga i te āhua o te kōrero kia tiaki i te mana o ngā tūpuna me te iwi (p. 62). Ka whakaara i ā Tau whakamāramatanga, kei ngā tikanga Māori ngā huarahi ki te waihanga i ngā kōrero, ki te whakaraupapa i ngā kōrero, otirā ki te whakamārama i ngā kōrero (p. 63). Ā, pēnā ka āta waihanga te Māori i te huarahi rangahau, ka kitea he rite tonu te hanga ki ngā whāinga me ngā

tirohanga i puta i a Smith, Durie, Royal, Mahuika rātou ko Walsh-Tapiata mō te kaupapa Māori.

1.6 TĀTARINGA PUKAPUKA

Ko te whāinga o te tātaringa pukapuka he hora mā te kaipānui te ia o ngā kaupapa matapaki e karawhiu ana i te ao o te kaupapa kōrero nei. Ka āta whai atu i ngā matapakinga mō ngā kōrero tuku iho me ngā hononga o te reo me ōna tikanga. Ko ngā kōrero nei ka toro atu ki ētehi tirohanga o te uru, engari ko te whānui ka ahu mai i ngā tirohanga taketake. He maha ngā rerekētanga i waenganui i ngā ao e rua, heoi anō, ka whāiti te tirohanga ki te kaupapa kōrero tuku iho kia whakaputa i ngā ritenga me ngā kupu tohutohu o roto. Ka whiti atu hoki ki ētehi whakamahuki mō te iwi me te hapū kia huri pai atu ngā upoko o te kōrero whakapae ki ngā hanganga hapori, tōrangapū, ahurea anō hoki.

1.6.1 Whakaawenga Reo, Whakaawenga Tikanga

Kua tupu haere ngā kōrero e piri tata ana ki ngā āhuatanga Māori. He nui ngā kōrero kei te puta mai i te ao rangahau, ā, ahakoa te tautoko o te tokomaha i ngā tirohanga Māori, he mōhiotanga noa mō ngā ākinga Pākehā i roto i ngā whakaputunga kōrero. Ka aro ki tā Royal (1994, p. 14) tūranga i tēnei taupatupatu;

“E hoa mā, kua roa ngā kaituhi Pākehā e tuhituhi ana i ā rātou kōrero mō ngā iwi Māori. Kua tōia tātou e aua kōrero! Kātahi rawa te hanga! Kua riro hoki te wairua o te rangatahi i ērā pukapuka, ahakoa he mana tonu tō rātou, tō ngā uri taketake ake nei”.

Hei tā Royal whakapae, kei roto i ngā ringaringa o te whakatupuranga nei te āheitanga ki te kawē i te reo me ōna tikanga.

Ahakoia te whakaaro rā, kei wareware te mana o ngā mātākōrero ā kui mā, ā koro mā. Hāunga ngā pukapuka kua puta i a tauwi mō ngā iwi Māori o te motu, kei ngā whakapapa, ngā waiata, ngā mōteatea, me ngā kōrero tuku iho e ū tonu nei te mana o ngā kōrero. Ka whakapae a Belgrave (2005, p. 5), kei ngā whakaputunga kōrero tuku iho e koropupū ana he tohe whakatakariri i waenganui i a Māori, ā, he rite tonu te wairua ki tērā i te tohe o waenganui i te Māori me te Pākehā. Hei tauira, ka hangaia e Ngāi Tahu tā rātou whakaputunga hītori mō ngā taunaha Tiriti, ā, ka tae ki te tānga o te pūrongo o Te Rōpū Whakamana i te Tiriti o Waitangi, kātahi ka tīni tonu i ngā tuhituhinga rā (Belgrave, 2005, p. 5). Ka tīhore ngā hanganga me ngā tirohanga tauwi i te mana o ngā kōrero tuku iho kia noho tahanga.

1.6.2 Whakaawenga Tauwi

Ka rere tonu te tātaringa ki te ūnga mai a Kāpene Cook ki Aotearoa. Kātahi te whāinga hī tohora, hī kēkeno hei hokohoko hinu, hei hokohoko kiri. Nāwai kāre he aronga ki ngā iwi Māori, kātahi ka whakawhitiwhiti, ka whakaipoipo atu. Heoi anō, kāre te pāpakutanga o te kōrero whakapae e āhei ki te whakaahua i te hōhonutanga o ngā kōrero katoa.

1.6.3 He Tūtakinga Ahurea

I te tūtakinga o tētehi iwi ki tētehi atu, ka kawea mai e ia iwi ōna ake mōhiotanga, ōna ake tikanga, me ōna ake tirohanga. Kia mawhiti atu te aro ki te karenga wai o te taenga mai o ngā 'tupua, he kanohi kei ngā muri-kokai' (Salmond, 1997, p. 534). Koinei tētehi o ngā whakaarohanga tuatahi o te Māori mō te ope manene me ō rātou tikanga rerekē ki te hoe waka. Ka aro ki te ūnga o te kaupuke o Adventure ki te whanga o Whareūnga, ki Taitara, ki Tōtaranui anō hoki. I hinga ētehi o te ope o Kāpene Cook i te ringa o te tangata whenua. E ai ki a Salmond (1997), he rerekē te tirohanga o te Pākehā ki te kaupapa o te mate nei; hei tā Kāpene Cook, he kōhuru take kore, hei tā te Māori: i te takahi te ope o Kāpene

Cook i ngā rāhui i whakatūria (p. 160). Kāre tēnei āhuatanga i rerewa noa, engari he akoranga i hua ake i te mahi hē. I te hemonga o ētehi tāngata, koia rā te tikanga o te tapu me te utu ahakoa te tirohanga Pākehā o te kōhuru. Anō te pai me te kino o te rangirua o ngā tūtakinga pēnei i tēnei, kātahi ka mātau te Pākehā he rerekē ngā momo tikanga Māori, waihoki ka mātau te Māori he rerekē ngā momo tikanga Pākehā.

Atu i te hanga rangirua nei, he āhuatanga tauaro ka puea ake i te tūtakinga ahurea. E ai ki a Moses (2008), mā te ahurea kaha ake e kai te ahurea ngoi kore (pp. 3-54). Ko te āhuatanga kē o tēnei taiwhanga kōrero, he taikaha te iwi Māori ki te ū ki ngā tikanga i whāia nō ngā manomano tau o mua i te taenga mai o tauiwī. Ka whakapae a Green (1977), ka kai te ahurea Pākehā i te ahurea Māori, engari, ka taea hoki e te ahurea Māori te kai te ahurea Pākehā kia pēnei: ka whakahāngai te ahurea ririki i tōna āhua kia rite ai tōna hanga mō ngā ritenga o te ahurea nui ake (p. 31). He māramatanga tēnei e whakaatu ana i tētehi o ngā here o te taura i whiria e ngāi Māori. Engari he maha ngā here i whiria kia tōia mai te hapori kākano rua e kitea ana i ēnei rā. Ka haere tonu ā Green whakamārama, koia te āheitanga i whakatauiratia e ngāi Māori ki te tiki ake i ngā tikanga me te reo Pākehā kia whakawhānui i te puna mōhiotio (p. 31).

Ahakoa te ariā e kī nei kua tīni ngā āhuatanga o roto o te ahurea Māori, he pūmanawa tēnei nā ngāi Māori i whakapakari i te wā o te hekenga nui i te Moana-nui-a-Kiwa, ā, nā tēnei pūmanawa i tere mātau ki ngā tikanga Pākehā (Green, 1997, p. 14). I tupu a ngāi Māori i ēnei tūtakinga ahurea, ā, i tupu te Pākehā – waihoki, i whai hua ngā taha e rua hāunga ngā pēhitanga o te waimeha. Kātahi rā te whakatinanatanga o te waiwai o te rere me te hikohiko o te hanganga o te ahurea.

1.6.4 He Matapakinga Waimeha

I te taenga mai o tau iwi, ka tae mai hoki he ahurea whakamemeha i te ahurea Māori. Tē taea te karo te kaupapa waimeha, he take nui puta noa i ngā whakatupuranga. Ka mutu te rautau tekau mā iwa, ā, ka kite rā anō i te ngarohanga o te mana o ngā tohunga me ngā rangatira, te mātauranga Māori, te reo Māori, me te noho āhuru o te Māori i Aotearoa nei. Ka kōrero a Walker (1990), i takahi te Pākehā i te rangatiratanga o te Māori kia kōkirihiā tōna ake rangatiratanga i ngā āhuatanga maha o te ao hou (p. 10). Ka mea hoki a Walker, i piki ake te rangatiratanga o te Pākehā i te wā i hemo te tokomaha o te iwi Māori mai i te rua rau rima tekau mano tāngata ki te whā tekau mā rima mano tāngata (p. 10). Heoi anō te whakaaro o te iwi waimeha, nōna te mana ki te whakakotahi i te iwi Māori me te iwi Pākehā, ki te karo hoki i ngā tikanga Māori i runga i ōna ake whakahaerenga (Walker, p. 10).

1.6.5 Te Māia o te Iwi Māori

Whai muri atu i te matemate me te hemohemo o te iwi Māori i te rautau tekau mā iwa, ka toru ngā whakatupuranga kātahi ka piki anō te tokomaha o te iwi Māori. Ka tupu anō te hiahia o te reanga Māori nei ki te whakaaraara i tōna ahurea e noho marara ana. I tēnei wā, i te nuku te tini me te mano o te Māori ki ngā taone nui – whitu tekau mā rima pai hēneti o te hunga Māori i noho ki te taone i muri i te Pakanga Tuarua o te Ao (Walker, 1990, p. 10). E whakanui ana te whakaputunga o Walker i te wairua o ngā toa o Ōrākau i whakapūmau i te mana motuhake – ka whakatairanga te hunga taone i te wairua toa nei hei painga mō ngāi Māori i te ao i noho wehewehe ai te iwi Māori me te iwi Pākehā. Nāwai rā te huanga mai o te kōhanga reo, te kura kaupapa Māori, te wharekura, te wānanga me te hokinga mai o te aroha ki te ahurea, te reo me ōna tikanga.

Mō ngā āhuatanga waimeha, ka whakapae a Freire (1970), ahakoa te pēhitanga o tētehi iwi i tētehi atu iwi – ehara i te mea, koia rā te otinga atu; engari ka hua mai te māia i ngā whakahaerenga kiko kore me ngā mahi

tūkino ki te tangata (p. 21). Mea rawa ake ka mōkaitia te tangata e te waimeha, ka ngaro tōna whenua, ōna wāhi kai, me tōna reo mā te takahi ahurea. Ka tautoko i te kupu tohutohu a Freire, ko te mahi tino nui mō te tangata taketake kua pēhingia e ngā āhuatanga waimeha, he whakarere atu i ngā āhuatanga waimeha, he whakanoa anō hoki i te iwi nāna ia i pēhi (p. 21) – kātahi rā te wero nui!

Nō te wā o te pakanga i Ōrākau, e kī ana a Walker (1990), i rite ngā rangatira ki te whawhai, ki te whakarere atu i ngā pēhitanga, i te whakatairanga rātou i te mana o tō rātou ahurea me tō rātou mana motuhake (p. 151). Nō reira e kite ana i te whakatinanatanga o ngā kupu a Freire rāua ko Walker, ā, mai rā anō te whawhaitia e whawhai ana. Waihoki, ka whakatairite atu te whakaaro nei ki tā Freire (1970) i kī ai, pēnā he mōhiotanga tō te iwi manene mō te iwi waimeha, ka māmā ake te pikitanga atu ki te taumata o pūrangiaho, ā, ka taea e te iwi manene te tuku ana mekameka manene (p. 148). Ko tōna ritenga te matikanga mai o te reo Māori me ōna tikanga. Ina te māia o te Māori ki te wero atu ki ngā pēhitanga. He ōritenga tō te whakaūnga tuakiri nei ki tō Guha (1997) whakaritenga mana: mā te tāwhi, mā te whakaawe rānei (pp. 20-23). Ki te titiro ake ki te wāhi o te mana i te hanga o te tuakiri, ka whakahau ahakoa ngā whakaawenga maha o tauwi i te ao Māori, kāre te tuakiri i tāwhi kau iho nā runga i te tikanga ki te wero atu, ki te whakahāngai rānei ki ngā āhuatanga Pākehā.

1.7 HE WHAKATEPE

E rārangi ake nei te hanga o te kōrero whakapae kia torotika te whai atu i te takoto o ngā mahi, kia mārāma hoki tōna orokohanga mai, me ngā kawenga e hautū ana i te huarahi rangahau. Kua tātari hoki he pitopito nā ngā tohunga kōrero mō te wāhi motuhake o te reo me te tikanga i te ao rangahau nei. E kitea ana, he waka te reo Māori mō ngā puipuiaki a ngā tūpuna, ā, e toitū nei ngā kōrero tuku iho ahakoa ngā āhuatanga o te

tūtakinga ahurea me ngā āhuatanga waimeha i pā mai ki te Māori. Kua arotakengia ētehi momo whakaaro hei taki i te mahi rangahau iwi, ā, kua wānangahia ētehi tūmomo āhuatanga ka puta mai i te mahi rangahau – ko ngā hua me ngā mate ka puta i te arotake i te hītori me ngā kōrero tuku iho anō hoki. E whai ake nei, ka tahuri ki te puku o te kōrero, ki te whakamōhiohio ko wai te iwi o Raukawa.

2.0 RAUKAWA, I HAERE MAI KOE I WHEA?

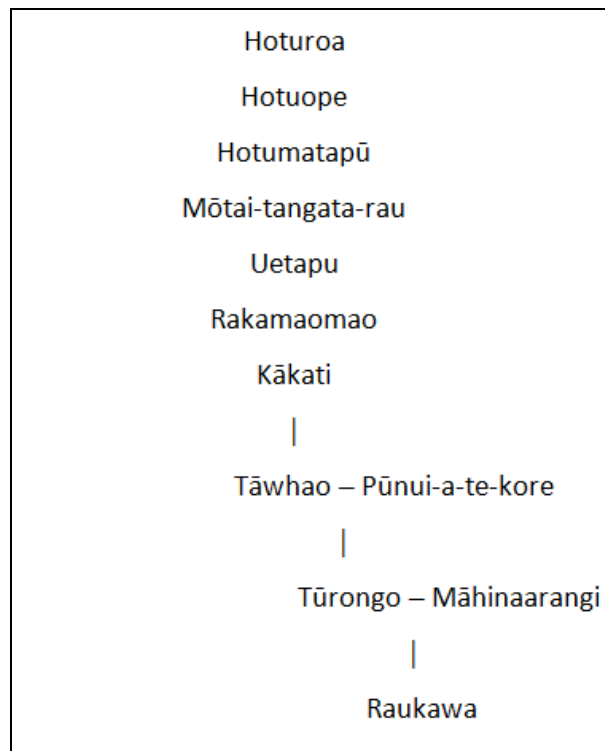
*Ko Mōkau ki runga, ko Tāmaki ki raro
Mangatoatoa ki waenganui
Pare Waikato, Pare Hauraki
ki Te Kaokaoroa o Pātetere
Te Wairere, ki Horohoro
Pōhaturua ki Nukuhau, ki Taupō-nui-a-Tia
Hurakia ki Hauhungaroa
Titiraupenga ki Te Whakamarumaru
Ko Te Pae o Raukawa
E piki ai ki runga o Maungatautari
Ki Wharepūhanga te wāhi e tū nei a Hoturoa!*

(N. Te Hiko, personal communication, May 20, 2011)

2.1 HE WHAKATAKINGA

He nui ngā kōrero haumako o te iwi o Raukawa. Heoi anō, ko tōna takenga mai kei tua atu i taenga mai o te waka o Tainui. Koinei ngā momo kōrero e pātuki ake nei. He iwi a Raukawa nō te kāhui iwi o Tainui. Ko Raukawa te tupuna nui, ā, nāna, ka hua mai te ingoa o te iwi. E noho nei te iwi i te puku o Te Ika a Māui, kei runga ake e whakapae ana ōna tohu whenua. Ka ahu mai te tupuna Raukawa i te kāwai whakaheke o Hoturoa, te kaihautū o te waka o Tainui. I whiti mai a Tainui waka ki Aotearoa nei i Hawaiki. Koinei te rārangi whakapapa mai i Hoturoa heke iho ki Raukawa;

Whakapapa 1: Hoturoa ki a Raukawa



(Jones & Biggs, 1995, p. 75)

He mana nui tō te whakapapa, heoi ka whakatairanga ake ngā hononga o te waka tapu nei i heri mai i ngā tūpuna i ngā rā o nehe.

2.2 KUPE

Ka tīmata i te wā i a Kupe kia whāngai i ngā kōrero mō te rārangi whakapapa e haere ake nei. E kitea ana te tūāpapa o te ara whakapapa ki Aotearoa.

Whakapapa 2: Kupe ki a Raukawa

<i>Matahourua waka</i>	
Kupe	
Tahaunui	
Popoto	
Uehae	
Kahu-kura-taepa	
Tamangenge	<i>Takitimu waka</i>
Kauwhataroa	Tamatea-ariki-nui
Awhirau	Rongokako
Rapa	Tamatea-pokai-whenua
Rongomaiwahine	= Kahungunu
Kahukuranui	
Rakei-hiku-roa	
Tupurupuru	
Te Rangi-tuehu	
Tuaka	
Māhina-a-rangi = Tūrongo	
Raukawa	

(Jones & Biggs 1995, p. 75)

E ai ki ngā kōrero, ko Kupe te tupuna tuatahi ki te kite i te motu o Aotearoa. Hei tā Jones & Biggs (1995, p. 12), ki te titiro ki ngā rārangi whakapapa, ka taea te tātai, i tau mai ngā tūpuna ki Aotearoa nei i te takiwā o te tau iwa rau rima tekau. E ai ki ētehi kōrero, ka tūpono noa iho ia ki Aotearoa, ā, i ētehi atu kōrero, i whakatau kē te terenga mai ki Aotearoa i runga i te āhuatanga i te tupu haere te tokomaha o ngā tāngata i Hawaiki.

Kei te rārangi whakapapa e kitea ana, he tino hononga tō Raukawa ki ētehi atu waka i tere mai ki Aotearoa nei. Heoi anō, ka kōrerohia ngā nekenekehanga o waenga i ētehi o ngā uri e raupapa nei i ngā upoko o te tuhinga whai ake.

2.3 TAINUI WAKA

“Tōia Tainui

Tapotū ki te moana

Mā wai e tō?

Māku e tō, mā whakatau e tō!”

(Jones & Biggs, 1995, p. 27)

Huhua noa ngā kōrero mō te takenga mai o te waka o Tainui. Kei ngā waiata, ngā kōrero, ngā tauparapara, ngā pukapuka, me ngā tini mātāpuna e iri ana ngā pitopito kōrero i whakapūmautia kia pupuru te mana o te waka tupua nei. Ka kōrerohia te rākau i tope ki te hanga i te waka; ka kōrerohia ngā toki i tope i te rākau; ka kōrerohia te tohi i whakapuaki ki te whakawātea i te waka. Atu i Hawaiki, ka ū mai a Tainui waka ki Whangaparāoa, ka hau atu ki te wāhi e karangahia ana ko Tāmakimakaurau, kātahi ka tau atu ki Kāwhia. I te terenga nui nei, ka tuku ētehi i te waka i runga i te haerenga, ā, ka moea te tangata whenua o reira, ka whakatau he tohu whenua anō hoki (Jones & Biggs, 1995, p. 52).

I a Tainui waka e haereere ana i tana haere, ka tupu te ngākaunui i waenga i a Rakataura, te tohunga o te waka o Tainui, me Kahukeke, te tamāhine a Hoturoa. Mai i tēnei moenga, ka taunahatia e te iwi o Raukawa tōna mana whenua i te mea he uri anō hoki a Raukawa nō Rakataura me Kahukeke. I ā rāua haerenga, i kitea, i nōhia, i tapaina whenua – hei tā Wright, he maha ngā wāhi i roto i a Raukawa i ēnei rā pērā i a Te Wharepūhunga-o-Kahu, Te Whakakāhako-o-Kahu, Te Hurakia-o-Kahu, me Te Puke-o-Kahu (e mea ana ki rō Te Hiko, 2010, p. 52).

2.4 TĀWHAO

He tino tupuna a Tāwhao i ngā kōrero tuku iho o Raukawa. Tērā tētehi tokorua, he teina, he tuakana, ko Pūnui-a-te-kore rāua ko Maru-tē-hiakina. Ka whānau mai a Tūrongo i te tuakana, arā a Pūnui-a-te-kore. Ā, ka whānau mai a Whatihua i te teina, a Maru-tē-hiakina. Ko te take whakaharahara o te tokorua nei, i whānau mai a Whatihua i mua i a Raukawa – i reira hua mai ai te taupatupatu nui, nō wai kē te mana tuakana (Jones & Biggs, 1995, p. 63).

I ngā kōrero tuku iho o Tainui, ka rangona whānuitia ngā mahi tinihanga me ngā whawhai i waenga i ngā taitama nei. Ko tētehi o ngā mahi tinihanga nui, i riro i a Whatihua ko Ruapūtahanga. Engari anō, ko te tikanga i taumau ai a Tūrongo rāua ko Ruapūtahanga (Jones & Biggs, 1995, p. 67). Me i kore ngā mahi tinihanga, kua whakapūmautia tēnei taumau, ā, tē takea mai a Raukawa.

2.4.1 Ko Tūrongo rāua ko Māhinaarangi

Whai muri iho i te mahi tinihanga o Whatihua ki a Ruapūtahanga, ka whiti atu a Tūrongo ki te tai rāwhiti. I rangona e ia, i reira tētehi puhi, a Māhinaarangi. Ka whakapeto ngoi, ka whakaheke werawera, ka whakapau kaha a Tūrongo i ngā mahi āna i te wā kāinga o Māhinaarangi, i te tai rāwhiti. Nāwai rā, ka kite atu te pāpā o Māhinaarangi, a Tūaka, i tō Tūrongo pūmanawa ki te mahi (Te Ao Hou, 1953, p. 17). Nā, ka mea atu a Tūaka ki tāna tamāhine kia whaiwhai atu i a Tūrongo hei hoa rangatira mōna.

Heoi, ka rewa ake tā Māhinaarangi mahi kia aronui atu a Tūrongo. Pō iho, pō noa, ka huna a Māhinaarangi i raro i te korowai pōuriuri kia tūpono ki a Tūrongo i ana hokihokinga atu ki te whakangā. Kotahi noa iho te mea i

whakaatu atu ki a Tūrongo ko wai te wahine muna nei, arā, ko te kakara o te hinu raukawa i pani ai a Māhinaarangi ki tōna tinana (Te Ao Hou, 1953, p. 17). Nāwai rā ka haere te wā, kātahi ka houhoua te hononga nei. Ka whakaae a Tūaka me tana iwi ki te peatanga nei. Kāre i roa, ā ka hapū a Māhinaarangi. Ka whakarite kia haere a Māhinaarangi ki te wā kāinga o Tūrongo, ki reira whānau ai tā rāua pēpi. Ka kotahi atu a Tūrongo ki Kāwhia ki te hanga whare mō Māhinaarangi me tā rāua pēpi, ā, ka pōwhiri atu ki a Māhinaarangi me tana ope ki te whai mai ina rite ai he kāinga hou mō rātou.

I te wā kāinga tonu o Tūrongo, ka tapatapa whenua a Tāwhao, ko tētehi wāhanga ki ia o āna tamatāne. Ko te pae whenua i waenganui ko te moka raki o te Rohe Pōtae, ā, ka whakarite i te whenua ki te tonga ki a Tūrongo, ko te raki ki a Whatihua. I runga i te whakahau taurikura a Tāwhao ki te whakawehe i ngā whenua o ana tama, ko Tūrongo ki tuawhenua ki tētehi puke e kīa nei, ko Rangiātea – kei te tahatika tonga o Manga-o-rongo – ki reira whakatūtū ai i tōna kāinga hou.

Ka tata te whānautanga mai o te pēpi, ā, ka tika te haere o Māhinaarangi me tana ope mā Te Wairoa, mā Waikaremoana, ki Rotorua me Tauranga. Ka whakangahau te hau kāinga o ia wāhi i tau atu ai a Māhinaarangi me tana ope. Tērā tētehi kōrero e mea ana, i haere a Māhinaarangi atu i Rotorua, mā Te Kaokaoroa o Pātetere ki Ōkoroire, tata atu ki Tīrau. Ā, i konei i tīmata te whānautanga mai o tana pēpi. Ka haere te wā, ka tau atu ki tētehi puna wai, ki reira whānau mai ai te pēpi i tapā ko Raukawa, hei whakamaharatanga ki te kakara i pani ai i ngā wā whaiāipo. Ka kaukau ki tēnei puna wai, kua tapaina Te Wai Takahanga-a-Māhinaarangi.

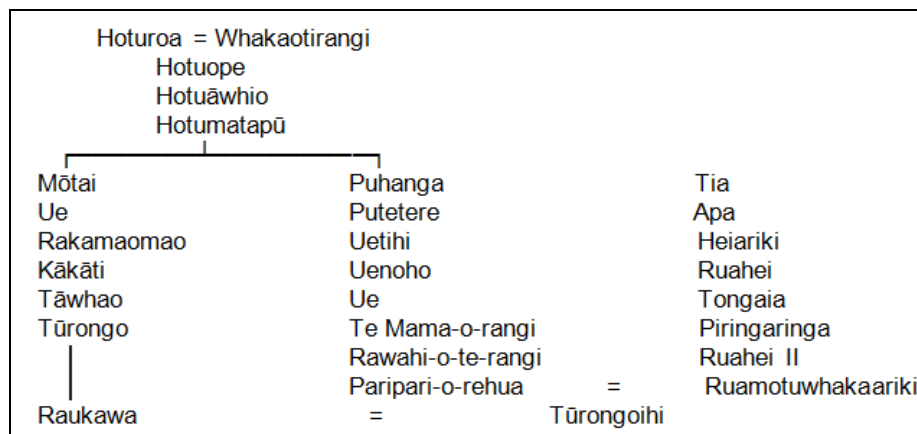
He kōrero anō e kīa ana, ka haere kē a Māhinaarangi mai i Rotorua ki Tauranga, kātahi ka whakawhitia a Kaimai ki te taha rāwhiti o ngā pae maunga. I reira ka whāngai waiū a Māhinaarangi ki a Raukawa. Kua

whakamaumaharatia te wāhi nei k i te ingoa o te marae o Ūkaipō, kei te pūtakenga o Arapōhatu (McBurney, 2006, p. 15). Me te āhuetanga rite tonu o ngā kōrero tuku iho, he kōrero anō e kōrerohia ana a Māhinaarangi i te karamatamata o tōna hapūtanga e whai haere ana i te ara kei te taha rāwhiti o Kaimai i te taha tonu o tētehi kōawa. E mea ana te kōrero, ka whai te ope i te ara nei tae noa atu ki tana piko ki te uru, kātahi ka mōhio koia te wā kāinga o Tūrongo. Ka tapā te wāhi nei ko Whenua-ā-kura, ā, i konei kē te wāhi i whānau mai a Raukawa (Te Hiko, 2010, pp. 76-77).

2.4.2 Ngā uri a Raukawa rāua ko Tūrongoihi

Ka tupu ake a Raukawa, ā, ka moe i a Tūrongoihi, he wahine nō Te Arawa. Mai i tēnei moenga, ka hua mai te iwi o Raukawa.

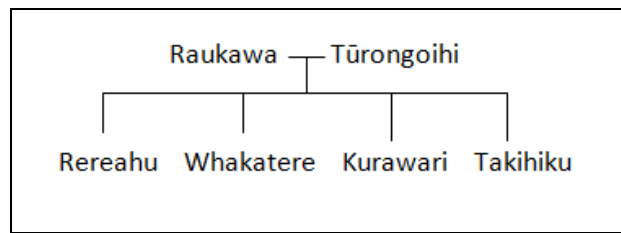
Whakapapa 3: Hoturoa ki a Tūrongoihi



(Te Hiko, 2010, p. 80)

Ka ahū mai te marea o te iwi i ā Raukawa tamariki, arā, a Whakatere, a Takihiku, a Kurawari, me ā rātou tamariki mokopuna. Hei tā Kelly (1949), ka heke tōtika mai a Tūrongoihi i a Tia, me te mea hoki, ko tēnei moenga tētehi o ngā hononga matua i waenga i a Tainui me Te Arawa (p. 85).

Whakapapa 4: Ngā uri a Raukawa

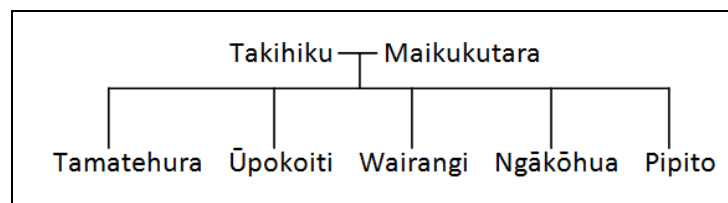


(Jones & Biggs, 1995, p. 143)

He tamaiti anō tā Raukawa, ko Rereahu tērā. Ā, koia rā te huanga mai o te iwi o Maniapoto. I whakatangatawhenua te iwi o Maniapoto i te rohe huri noa i Waipā me Mangaokewa, i ēnei rā ko Te Kuiti te manawa tonu o te rohe o Maniapoto. Ahakoa te mātotoru o ngā kōrero mō Maniapoto, he wā anō tōna e wānangahia ai ērā hononga me te whakapūmautanga o te iwi nei.

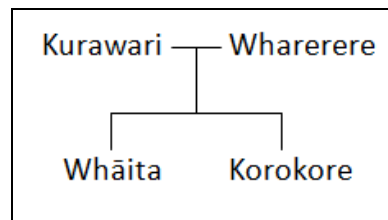
2.4.3 Wairangi rāua ko Whāita

Whakapapa 5: Ngā uri a Takihiku



(Jones & Biggs, 1995, p. 143)

Whakapapa 6: Ngā uri a Kurawari



(Jones & Biggs, 1995, p. 143)

Ki runga ake nei te rārangi tamariki o Takihiku me te rārangi tamariki o Kurawari. Ko Wairangi me Whāita ētehi o ngā tūpuna ka kaha rangona i ngā kōrero tuku iho o Raukawa. Ko te tino kōrero mō ngā tūpuna nei e hāngai pū ana ki te pakanga i waenga i te iwi o Ngāti Raukawa me te iwi o Ngāti Kahupungapunga. Waihoki, nā runga i ngā mahi a Wairangi me ōna tuākana, me ōna tēina, me Whāita anō hoki, i whakatangatawhenua a Ngāti Raukawa i te rohe e mōhio whānuitia ana i ēnei rā mai i Whakamaru ki Taupō-nui-a-Tia.

2.5 HE WHAKATEPE

Ahakoā tīmata ai ngā kōrero whakapapa o Raukawa i mua rawa atu i te hekenga o ngā tūpuna i Hawaiki, koinei ētehi o ngā tino tūpuna e kaha mau nei i ngā mātākōrero o Raukawa. Kua āta tātai i ēnei whakapapa te whakauenukutanga o ngā tūpuna, otirā, te iwi, kia ū te mana whenua. Kei ngā whakairinga kōrero mō Tainui waka me Tāwhao e kitea ana, he wāhanga te iwi o Raukawa nō te kāhui iwi o Tainui. Kei ngā kōrero whakarākei mō Tūrongo rāua ko Māhinaarangi e whakapaetia ana te orokohanganga mai o Raukawa. Ko ngā kōrero mō Wairangi rāua ko Whāita te whakaūnga o ngā uri o Raukawa i tōna ake rohe me āna pae whenua, ka mutu, koia ka totoka hei iwi ake. Kia hīkina ake te orokohanganga mai o te iwi, ka whai i ngā take mō te mana whenua me te mana tangata.

3.0 MANA WHENUA, MANA TANGATA

3.1 HE WHAKATAKINGA

E whai iho nei te whakaritenga o ngā kōrero tuku iho mō te rohenga o Raukawa. E aro pū ana te upoko nei ki ngā kōrero mō te mana whenua me ētehi āhuatanga ka toko ake i te kaupapa kōrero pērā i te taki i ngā pae whenua o te iwi, he pērā hoki ōna pānga ki te mana me te tuakiri o te tangata. He aha rā ngā matapaki mana whenua i roto tonu i te iwi Māori, ā, i tua atu, i tāwāhi anō hoki? E takoto nei ētehi pitopito kōrero tuku iho hei whakawahawaha i tērā huatau. Ā, ka kapohia he tauira nō tāwāhi hei whakatauritenga mō te horopaki o Aotearoa. Koinei e tirohia nei.

3.2 KO TE TUAKIRI

He mea nui te tuakiri ki ngā tāngata taketake o te ao (Walker, 1990; Soutar, 1994; Mead, 1996; Smith, 1999; Barkan & Rush, 2002). Ki tā Ballara (1998, pp. 17-21), he tōpūtanga nui te iwi; e hanga nei ōna wāhanga i te hapū me te whānau me ōna tini āhuatanga tuakiri e tīni haere ana i ngā wā katoa. Ko tētehi o ngā tohu tuakiri nei, ko te hononga ki te whenua, te wai, te taiao, me Papatūānuku. Tē hōpara te katoa o ngā āhuatanga tuakiri i te whāititanga o te kōrero whakapae nei. Heoi anō, ka whakaraupapa i ētehi kōrero whai pānga ki te kaupapa nei.

3.2.2 Mana whenua

Ko tētehi o ngā mea nui o te mana whenua ko ngā take tōrangapū puta noa i ngā pae whenua o te rohe. Hei tā Mead (2003, p. 7), e kaha whakamahia ana te tikanga mana whenua i ngā whakaritenga me ngā whakaherenga taunaha i ngā rawa pērā i te whenua. Pēnā he take ā-iwi, pēnā he take ā-hapū, pēnā he take ā-whānau rānei, ka hua ake ēnei momo take i te papa o Tū, me he take pakanga, me he take whakatau mā wai tētehi rohenga e whakatau. He pānga nui ki nāianeī, ki anamata i

runga i ngā kokoraho tiriti, heoi anō ka āta kōrerohia ngā take tiriti i tua atu i te upoko nei.

3.2.3 Rohe

Kua kōrero kētia ko wai te iwi o Raukawa, ā, i takea mai i whea. Kei ngā pou whenua ake e kitea ana he whakapaparanga tuakiri mō te iwi o Raukawa. E whā ngā rohe o Raukawa, ā, e whā ngā kāhui hapū e paiheretia nei e te iwi. Pērā i ā Walker (1990, p. 65) whakamārama, ka waihanga mai te iwi i ngā hapū. Ā, kua puta mai ngā hapū i te waihangatanga mai o ngā rohe e whā nei kua whakatau hei whenua tupu, hei tūrangawaewae.

3.2.4 Whenua

Kei te pokapū o Te Ika-a-Māui te whakapūmautanga o te rohe o Raukawa. Huri noa i te rohe o Raukawa, he iwi atu anō, he rohe atu anō, he pae whenua atu anō i runga tonu i ngā pae whenua o Raukawa. Kia mahara ake ki ngā uauatanga o te hanganga o te iwi me te hapū (Walker, 1990; Ballara, 1998), ki te whakauru i ngā āhuetanga o te noho ki te taha o iwi kē atu, ka whai wāhi ēnei āhuetanga hei āpītitanga mō te hanganga o te tuakiri. Ka torotika, ka kotiti hoki te haere o te tuakiri i runga i ngā āhuetanga o te takoto o te whenua.

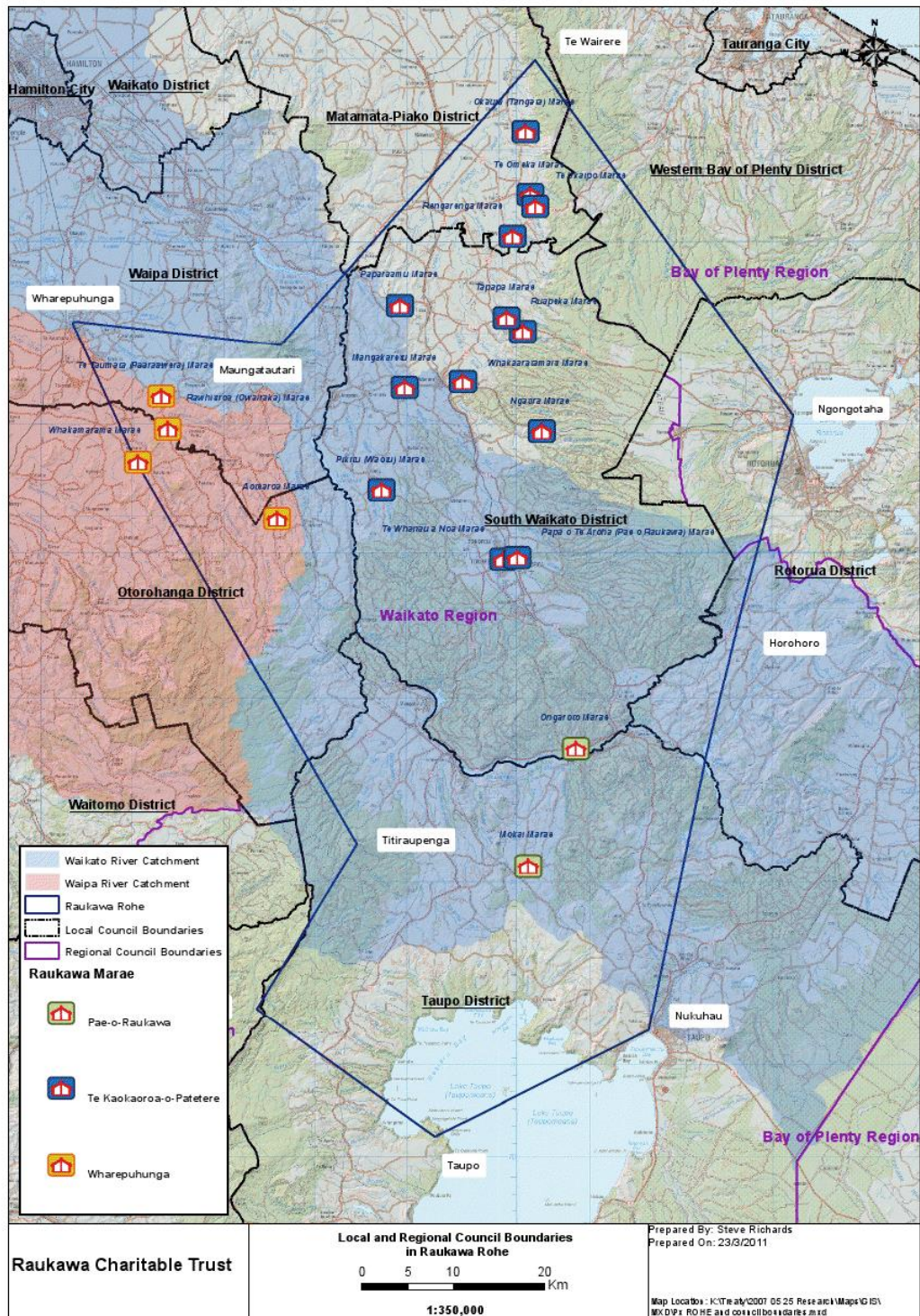
3.3 Ō RAUKAWA PAE WHENUA

E tū ana te rohe o Raukawa i te poho o Te Ika-a-Māui. Mai i Matamata i te raki, ki Taupō-nui-a-Tia i te tonga, ki Te Awamutu i te hauāuru, ki Tarukenga i te rāwhiti. He maha ngā pae whenua e whakapā ana ki rohe kē, ā, e inaki ana ki rohe kē. Waihoki, he pae whenua anō e mōhiotia ana nō Raukawa ake. E whā ngā tohu whenua e noho ana hei pou mō te rohe,

e mōhio whānuitia ana ko Te Kaokaoroa o Pātetere, ko Wharepūhunga, ko Maungatautari, me Te Pae o Raukawa (Waitangi Tribunal, 1993, p. 20).

Nā runga i ngā taunaha tiriti, kua tupu te pātaka kōrero o Raukawa, ā, kua nui haere ngā āheitanga o te iwi ki te whakariterite i ngā kōrero me ngā mātauranga o te iwi. I mua i te tarapekenga atu ki te hōhonutanga o ngā kōrero, ka whakaatu atu te mahere whenua o te rohe kātahi anō ka whakapuaki:

Mahere 1: Te rohe o Raukawa



(Nā te Taiwhanga Tiriti o Raukawa, 2011)

3.3.1 Te Kaokaoroa o Pātetere

E whakaahua ana te ingoa o te wāhi nei i te kēkē o Pātetere e torotoro atu ana (Hutton, 2009, p. 146). E toro atu ana te wāhi nei ki Te Wairere i te raki, heke iho mai ki ngā pae maunga o Kaimai me Mamaku, pātata atu ki te maunga o Ngongotahā me te moana o Rotorua (Raukawa Charitable Trust, 2011, pp. 7-8). E kī ana a Te Hiko (2010, p. 156), ka whai te rohenga i ngā pae maunga o Horohoro, tahuri whakateuru ki te awa o Waikato, tae ake ki te tahatika uru o te moana o Taupō-nui-a-Tia. Kātahi ka rere pūmau tonu te pae ki Wharepūhunga, otirā, ki Te Awamutu, ki Maungatautari, ā, atu i konā, ki Kēmureti, ā, hoki atu ki Te Wairere.

Ka whakahau a Te Hiko (2010, p. 157), i roto tonu i te wāhi o Te Kaokaoroa o Pātetere, e kōrerotia ana he momo whare, Te Whare Wairua o Raukawa. Ka whakakotahi te whare nei i ētehi marae me ētehi wāhi motuhake. Ko tōna whatitoka, ko Tarukenga; ko Pikitū te pou o muri i te whare, e anga atu ana ki te awa o Waikato; ko Ngātira te pou o waenganui; ā, ka toro atu ngā maihi o te whare wairua ki Te Wairere, me Horohoro (Te Hiko, p. 197). Mai i te uru ki te rāwhiti, ka torotoro ngā rara o te whare ki ngā marae o Te Kaokaoroa o Pātetere. E ai ki a Te Hiko (p. 158), i hua ake ngā kōrero nei i te rautau tekau mā iwa i runga i te takinga o Kīngi Tāwhiao, ā, nāna i mea ake kia tuitui i ngā iwi ki te pupuru i te whenua, kia aukati i ngā ngau kino o ngā mahi waimeha. E pēnei ana te kōrero mō te whare wairua o Raukawa;

Ko Ranginui te tuanui

Ko Papatūānuku te papa

Ko te poutūārongo kei Pikitū

Ko te poutokomanawa kei Ngātira

Ko te poutāhu kei Tarukenga, kei Te Ngākau

Ōna maihi, taka mai ki Te Wairere, ki Horohoro

(Te Hiko, 2010, p. 158).

3.3.2 Wharepūhunga

E toru ngā takenga mai mō te ingoa nei. Ko te maunga tērā e tū ana i te taha hauāuru o te awa o Waikato. Kei kō te porohanga whenua e tū ana te maunga rā. Ā, koirā anō hoki te ingoa o tētehi o ngā pou whenua o Raukawa.

I haere a Rakataura me tōna hoa wahine mai i Kāwhia ki te riu o Waipā. I tā rāua haerenga, he tapa whenua te mahi a Rakataura. Ka tae atu rāua ki tētehi wāhi i whakaingoatia, Te Wharepūhunga o Kahu. I konei whānau mai ai tā rāua pēpi, arā te wāhi i pūhunga ai a Kahu (Te Hiko, 2010, p. 250).

Hei tā te Raukawa Charitable Trust (2011, p. 10);

Ka whai atu te rohenga i te moka raki o Wharepūhunga i te porohanga whenua o Maungatautari, i te manga o Ōwairaka. Ko te pito rāwhiti ka whai atu i te awa o Waikato tae noa atu ki Waipapa, i tua atu o Mangakino. Ka huri ki tuawhenua ki te wāhi e kōrerotia nei ko Te Pouakani. Ka haere tonu ki te pito raki o Maraeroa, ki te tihi o Taporaroa. Ka haere tonu te rohe ki te Puke-o-Kahu, he puke i ngā pae maunga o Rangitoto, ki tua o ngā pae maunga ki te manga o Mangatutu. Ka whai atu i te rere o Mangatutu tae noa atu ki tōna tūtakitanga ki Pūniu. I tukuna atu e Tāwhao te rohe nei o Wharepūhunga ki a Tūrongo.

3.3.3 Maungatautari

Ko Maungatautari te ingoa e karangahia ana te maunga me ngā whenua huri noa i te maunga nei. Katoa te rohe e kōrero ana mō ngā whenua i te

taha hauāuru o te awa o Waikato, i Arapuni me Karapiro, ko Puahue, ko Pukekura, me Horahora anō hoki. E ai ki ngā kōrero, ka toro atu te rohe nei i tua atu o te rārangi aukati ki Te Awamutu me Kihikihi, ā, ka toro whakaterāwhiti ki te repo o Moanatuatua (Robertson, 1989; Raukawa Charitable Trust, 2011). He maunga whakahirahira a Maungatautari, koia te maunga motuhake o Raukawa, otirā, o Tainui. Kei te pūtake rāwhiti me te pūtake raki ngā nōhanga tuatahi o ngā uri o Raukawa, ā, mō te wā roa, koinei te papa kāinga o ēnei uri, haere ake nei.

3.3.4 Te Pae o Raukawa

He nui te rohenga whenua e karangahia ana Te Pae o Raukawa. Ki tā Raukawa Charitable Trust (2011, p. 10), ka whiti mai i Tokoroa ki Whakamaru, ki Maungaiti, ā, ka haere whakateraki ki Maraeroa, ki tua atu o nga whenua o Pouakani:

Ka huri whakatetonga ki ngā whenua i ngā tahataha o Taupō. I te pito rāwhiti, ka whakapā atu Te Pae o Raukawa ki Ohakuri, Horohoro, Ōrākei Korako, me Tahorakuri. I te rohe nei te maha o ngā momo taiao rerekē. E rere ana te awa o Waikato, ko ngā whenua reporepo, ko ngā ngahere whai manu o ngā maunga o Whakamaru, Titiraupenga, me Te Tarata, ko ngā whenua mānia o Pouakani, ko ngā rawa taiao pēnā i ngā puia o Ōrākei Korako, Reporoa, me Wairākei, ā, ko ngā wai Māori e rere ana i te roto o Taupō.

Kātahi rā te whenua haumako! Hei tā Raukawa Charitable Trust (2011, pp. 10-11), i hua mai te ingoa o Te Pae o Raukawa i Māhinaarangi; i tāna whitinga atu i ngā pae maunga o Kaimai ki te kite i tana ipo a Tūrongo, ka titiro ake ia ki te whenua kātahi ka kite atu a Wharepūhunga me Maungatautari i te hauāuru, me te whenua i raro iho e mōhiotia ana ināianei ko Te Kaokaoroa o Pātetere, ka titiro whakatetonga, ā, ka whana te pēpi i roto i te kōpū o tōna whāea, kātahi a Māhinaarangi ka hua ake –

“Ka takahi e koe ō waewae i runga i Te Pae o Raukawa” (nā Marina Te Hiko-Jacobs i whakapuaki, e meatia ana ki rō Hutton, 2009, p. 201).

3.4 NGĀ HEKE

I runga anō i te whakarārangitanga o ngā kōrero tuku iho a Raukawa, tē pare i ngā hekenga nui ki te tonga. Ka tupu te taupatupatu, te taukumekume, me te taukaikai i waenga i ētehi o ngā hapū o Raukawa, me ngā iwi e noho ana i Maungatautari. Nāwai rā ka heke ētehi ki Horowhenua me te tahatai o Kāpiti, kātahi ka hua ake a Raukawa ki te Tonga. Koinei tētehi o ngā kaupapa nui i ngā kōrero tuku iho o Raukawa nā te tini o ngā uri o Ngāti Raukawa i hūnuku ki te tonga. Ka hūnuku ētehi i runga i te karanga a Te Rauparaha, ā, e mōhio whānuitia ana nō Ngāti Toa, heoi anō, he hononga anō hoki ōna ki a Ngāti Raukawa mā te hapū o Ngāti Huia (Te Hiko, 2010, p. 108). Ka whai mai te whakapapa o ngā heke.

E ai ki a Kaiwhakawā Mair i te take Rohe Pōtae o te tau 1886, i ngā hapū te tikanga ki te hūnuku ki te tonga, ehara i te mea i whakarere atu, ahakoa e pērā ana ngā kōrero kei ngā pukapuka o te Kōti Whenua Māori (e meatia ana ki rō Ballara, 2003). Heoi anō, kua whakatangatawhenuatia e Ngāti Raukawa ngā rohe e rua nei. Ka karangahia ko Raukawa ki uta me Raukawa ki tai nā te whakapūmāutanga o te mana whenua me te ngiha o te ahikā ki uta, ki tai anō hoki.

3.4.1 Te Hekenga Tuatahi o Raukawa c1821

Rongonui ana te ariā o Te Rauparaha i tēnei wā, he rangatira nui ia i roto i ngā kōrero tuku iho o Raukawa, o iwi kē atu anō hoki pērā i a Ngāti Toa. Heoi anō, he nui te pānga o ngā heke ki te mana whenua o ngā hapū o Raukawa i noho pūmau tonu ki te hau kāinga i te pokapū o te Ika. He whānui ngā kōrero kua whakairia e pā ana ki ngā heke o Raukawa. Kua

whakahiato a Hutton (2009) i te whakapapa o ngā kōrero a ngā tūpuna, a Tupotahi, a Hitiri Te Paerata, me ētehi atu tūpuna kua whāriki he kōrero taunaki i te Kōti Whenua Māori.

I roto i te pūrongo a Hutton, ka whakarato he kōrero hōhonu mō ngā heke tuatahi o Raukawa i ārahina e Te Puke ki Mahauariki, Ruamaioro, rātou ko Te Mahunga (Grace, 1959, pp. 256-260) me te mea hoki e mea ana a Hutton (2009), kāre i angitu te heke tuatahi (p. 125). Hei tā Smith (1910), ka whakaeke ngā ope o te heke i tētehi pā i Makokoti i te awa o Whanganui i runga i te whakawhiunga he utu mō te mate o Hikitanga rāua ko Hekeawai nō Raukawa; tērā tētehi ope taua nō Whanganui, ka ngaki atu ki te tira haere me te mea hoki ka riro te tokomaha i ngā here a ngā iwi o Whanganui, ka hinga rānei (p. 403).

Ka toai hoki a Hutton (2009) i ngā kōrero taunaki a Tupotahi i te Kōti Whenua Māori, he rerekē ētehi o ngā whakapae i ā Smith (1910) kōrero heoi anō, ka whakaae ngā whakaputunga e rua ki te patunga o Raukawa i tana heke tuatahi mai i te kāhui iwi o Whanganui. Hei tā Te Hiko (2010), ko te mea nui e kitea ana i ēnei whakaputunga e rua, ko te pānga o ngā rangatira o Ngāti Kauwhata ki ngā heke o Raukawa i runga i te kitenga, he wāhanga a Ngāti Kauwhata nō te iwi o Raukawa (p. 148). Ko Renau Te Wharepakaru rāua ko Mere Kauwhata ētehi o ngā tāngata nō Ngāti Kauwhata i whakarato he kōrero taunaki i te Kōti Whenua Māori, ā, koinei e tautoko ana ā Tupotahi whakapae. E mea ana: Nō Ngāti Kauwhata ahau, he hapū o Raukawa (ka whakapuaki a Renau Te Wharepakaru rāua ko Mere Kauwhata, 1881, pp. 217-218). Hei tauira, ko Te Mahunga te tama a Wahineiti – he rangatira i tātaki i a Raukawa me Kauwhata i Maungatautari (Te Hiko, p. 148).

I ā Tupotahi kōrero taunaki, ka whakapae ia e whā rau te makiu o te ope i heke, ā, puta noa i te takiwā o Maungatautari, Aratitaha me Te Mania he

tāngata i noho i reira (Te Winitana Tupotahi, 1884, Waikato MB No. 13; e mea ana ki rō Hutton, 2009, p. 126). Nā, ahakoa te kaha whakapono a Tupotahi i te nui o te ope i wehe atu i Maungatautari, ka kite i noho puku te tokomaha i runga i te whakaaro kāre he hua i Kāpiti (Te Hiko, 2010, p. 149). Nō reira, ka noho tonu a Raukawa i Maungatautari ki te pupuru i ngā whenua o ō rātou tūpuna, kia whakapūmau i tō rātou mana whenua. He tauira pai te pakanga o Taumatawiwi, ina whakakotahi a Ngāti Haua me ngā iwi huri noa i te rohe o Waikato, ka harapaki hoki a Raukawa me Ngāti Kauwhata ki te kāwhaki i a Ngāti Marutūāhu i te takiwā o Maungatautari (AJHR 1881, G-2A, p. 28; e meatia ana ki rō Hutton, p. 129). E ai ki a Wiremu Haumu, he uri nō Raukawa me Ngāti Kauwhata, i reira ia i Taumatawiwi, ā, i kite ia i te rima tekau toa nō Ngāti Kauwhata kāre i heke ki te tonga, i te whawhai kē rātou i te pakanga i Taumatawiwi ki a Ngāti Marutūāhu (AJHR 1881, G-2A, p. 28; e meatia ana ki rō Hutton, p. 129). He ritenga anō tō te kōrero whakapae a Rewi Maniapoto: ono tekau te hunga nō Raukawa, tokotoru nō Ngāti Maniapoto, ā, he tokoiti noa iho nō Ngāti Whakaterere i whawhai i te pakanga (Te Winitana Tupotahi, Waikato MB 13, he kōrero taunaki i whakarato i te 7 o Hereturikōkā, 1884, e meatia ana ki rō Hutton, p. 118).

3.4.2 Te Heke Kārere c1825

I te whawhai a Te Rauparaha i te pakanga o Waiorua kātahi ka hinga, ā, koinei i kōkiri i te hekenga, e karangahia nei Te Heke Kārere (Te Hiko, 2010, p. 149). E ai ki a Hutton (2009), e rua ngā wāhanga o te heke nei, ko te tuatahi ko Te Heke Kārere, ā, ko te tuarua e mōhiohia ko Te Heke Whirinui (p. 127).

I te tau 1825, ka rongohia a Raukawa ki uta i kōhurutia a Te Rauparaha me tana ope i te motu o Kāpiti. I runga i te aroha ki te karanga nei, ka whakaara a Te Ahukaramū i tētehi ope taua ki te kite he aha te otinga atu o Te Rauparaha. Ka tae atu rātou ki Kāpiti, ka kite i te ora tonu a Te

Rauparaha me tana ope, ā, kāre he paku mate ō rātou. Ka whakapae a Te Hiko (2010), he mahi tinihanga tēnei nā Te Rauparaha ake i tito ki te whakawai i a Raukawa ki te heke ki te tonga (p. 149).

Nō reira, nōna i Ōtaki, ka ngana anō a Te Rauparaha ki te kawē i te toenga o te iwi i te noho tonu i Maungatautari, kia heke mai ki te noho i te taha o tōna iwi i te tonga. Ka kape anō a Te Ahukaramū i te tono rā. Heoi anō, ka kipa i te whakahau a tāna tuahine, a Waitohi, ki te hūnuku ki te tonga. E takoto ana i ngā rau whārangi o te pukapuka mahere whenua a McKinnon, Bradley & Kirkpatrick (1997) ko ngā kupu a Waitohi ki a Te Ahukaramū ka pēnei, “Ngāti Raukawa, e hoki ki Maungatautari. Mā wai o koutou e mau mai aku werewere hei noho mai ki runga i ngā whenua kua oti nei i ahau te ūkui?” Ko tā Te Ahukaramū whakautu, “Māku, mā te tuarā nui o Pakake” (p. 29). I runga i tērā, ka whakaae a Te Ahukaramū kia heke tōna iwi ki te tonga ki te noho ki te taha o Te Rauparaha. Ka hoki atu ia ki Maungatautari ki te whakawai i tōna iwi ki te heke ki te tonga. Ka kī a Grace (1959), ina tono atu a Te Ahukaramū kia heke tōna iwi ki te tonga, ka kaha whakahē rātou ki te wehe atu; i runga i te pukuriri, ka whakarite a Te Ahukaramū ki te tahu i te papa kāinga o tōna iwi me tana kōrero tito, koia kē rā te hiahia o te runga rawa (p. 344). He paku rerekē te kōrero a Best i tā Grace kōrero mō te hokinga atu o Te Ahukaramū. I konei e mea ana a Best (1901), ka hoki kē atu a Te Ahukaramū ki Taupō ki te whakaharatau i te tau o ngā whenua haumako i te tonga e tatari ana ki tōna iwi, ā, ki reira kauwhau i tōna iwi ki te heke ki Kāpiti; nāwai rātou ka whakahē, kātahi ka tahuna katoa tō rātou papa kāinga (p. 130).

Ka anga ngā kōrero tuku iho a Raukawa ki te tautoko i ngā kōrero a Grace (1959) i runga i te karanga o Te Ahukaramū he rangatira ia nō Maungatautari, kāre rānei e karangahia he rangatira ia nō Taupō. Ahakoa te rerekētanga o ngā whakamārama e rua, mārakerake te kitea ka āhuru te noho pūmau o Raukawa i tōna rohe hāunga ngā raru i waenga i a Raukawa me Waikato, me ngā raru o te taetae mai o ngā mōrehu o

Hauraki – e ai ki a Te Hiko (2010), ka mōhio i tēnei i runga i tō rātou horokukū tonu ki te heke ki te tonga (p. 150). Nā te mahi uruhi a tō rātou rangatira, nā tāna tahu i te papa kāinga i āki i tēnei wāhanga o te iwi kia mahue tō rātou tūrangawaewae. Nō reira, ina wehe atu te iwi o Te Ahukaramū, ka mōhioia rātou mō te tau o ō rātou kahu me ā rātou whāriki. Kua kōrero kētia, ka karangahia tēnei heke, ko Te Heke Whirinui.

I te tau 1827, ka whakaara anō a Nēpia Taratoa i tētehi ope taua kia haere ki te tonga. Ka karangahia tēnei heke, Te Heke Kariritahi.

3.4.3 Te Hekenga Kariritahi c1827

I te takiwā o te tau 1827 (McKinnon et al, 1997, p. 29), ka tīmata anō tētehi heke mai i Maungatautari, he ope taua e rua rau te tokomaha. He pū matā kotahi tō ia taua, ā, i tukuna atu rātou ki te turuki i te rahinga i tukuna atu i te tau tōmua. Ka mōhioia te ingoa o tēnei heke, ko Te Heke Kariritahi, ā, nā Nēpia Taratoa i arataki.

Ka haere tahi a Te Whatanui me te ope nei (Hutton, 2009, p. 120), ā, i runga i tana kitenga atu i te houkura o Ngāti Toa, ka hoki atu ki Maungatautari ki te whakahau i te toenga o tōna iwi ki te heke ki te tonga (Te Winitana Tupotahi, Waikato MB 13, he kōrero taunaki i whakarato i te 8 o Hereturikōkā, 1884, e mea ana ki rō Hutton, p. 121), kia mahue iho ngā raruraru me ngā tohe o Waikato.

3.4.4 Te Heke Mai-i-raro c1828

I te tau 1828, ka tātaki a Te Whatanui i Te Heke Mai-i-raro, ka haere i tua atu i ngā whenua o Tūwharetoa ki Heretaunga, ki reira whakatīwhetangia rātou e Ngāti Kahungunu (Te Hiko, 2010, p. 151). Ka haere tonu te iwi o Raukawa, ā ka ū ki te takiwā o Ōtaki, kātahi ka noho ki reira.

Ahakoia te heke o te tokomaha o Raukawa ki te tonga i tēnei wā, ehara i te mea, i mahue i te katoa o Raukawa ō rātou whenua tupu. Ka mea ake a Hitiri Te Paerata (1880) i roto i te Kōti Whenua Māori: ka noho tonu ngā uri a Whāita me Wairangi i te whenua i te porohanga o Tokoroa; ko ētehi i wehe atu ki Kāpiti, ki Rotorua, ki wāhi kē atu rānei; engari kua mau i a rātou te whenua nō te raupatu, ā haere ake nei; tē piroku, tē kewa ō mātou ahikā (p. 260).

He kōrero tēnei i tautokoria e ētehi atu kaitaunaki nō Raukawa i whakawākanga kē. I te Kōti Whenua Māori, ka kōrero a Wiremu Haumu, kāre te iwi o Raukawa i wehe atu; hei tāna, ka noho tonu rātou i Maungatautari (e meatia ana ki rō Te Hiko, 2010, p. 152). Ka mea hoki a Wiremu Haumu, ka haere a Raukawa ki Kāpiti kia riro pū, kāre i kāwhakina e te pakanga me te whawhai. Ko ētehi wāhanga o Raukawa i haere ki Kāpiti, ā ka noho ki Waipā me ngā rohe tonu o Pātetere (Haumu, 1866, p. 58). I te heke o Raukawa ki te tonga, ka noho tonu a Ngāti Tūkorehe ki Ōkauia (Haumu, 1879, p. 314).

Tērā tētehi kaitaunaki nō Raukawa, ko Hoani Makaho; i te whakaranga o āna kōrero taunaki mō te porohanga o Waipā, ka mea ia ka haere te iwi o Raukawa ki Kāpiti i te tau 1834. Ko ngā mahuetanga iho ka noho tonu i Pātetere me Maungatautari (Makaho, 1866, p. 86).

Tērā tētehi atu kaitaunaki nō Raukawa, ko Nikorima Rarowera. I te whakaranga o āna kōrero taunaki mō te porohanga o Manukatūtahi Otautahanga, ka whakahua ia ko ērā o Raukawa kāre i heke, ka noho i te taiwhenua mai i Mangere ki Wairaka (Rarowera, 1884, p. 294).

Hei tā Aperahama Rangitūtia, ko ētehi o ngā uri a Pipito i noho, ko ētehi i wehe atu. Whai muri ake i te wehenga atu o te marea ki Kāpiti, ka noho ngā mahuetanga i ā rātou papa kāinga me ā rātou pā. I ētehi wā, ka tau ki te ngahere pēnā he whakaekenga e haere ake nei, ā, ka hoki mai ina noa te mōrearea (Rangitutia, 1882, p. 63). Ki te titiro tātou ki ngā kōrero taunaki a ngā tūpuna nei, ka kitea te kaha whakaū a Raukawa kia mau ki tō rātou mana whenua, mā te noho tonu ki ō rātou whenua tupu. Heoi anō, nā ngā heke i hua mai te matatūtanga kia mau tonu ki te mana whenua me te tuakiri o te iwi.

3.5 TE KŌTI WHENUA MĀORI

3.5.1 Ngā Whakawākanga

I muri tata mai i tana whakatūnga, ka tīmata te Kōti Whenua Māori ki te whaihanga i ngā take o ngā rohe o Waikato me Taupō. He maha ngā wāhi i tū ngā whakawākanga, ko Kēmureti te wāhi o roto o te rohe o Raukawa i tohua hei taone matua mō te Kōti. Ka kōkiri i ngā nohonga tuatahi o Kēmureti i te tau 1866, nā Kaiwhakawā Matua Fenton i whakahaere. I mua mai i tērā, he raihe hōia te taone nei i te rohe murunga. Ko ngā tāngata Māori i tae mai ki te noho i ēnei whakawākanga kōti, i meatia kia moe ki waho atu i te raihe ki waenga pārae i runga i te tohutohu a te āpiha kia kaua e whakaaetia rātou kia kuhu mai (“Waikato - Native Land Courts,” 1866). Puta noa i ngā tau 1870 me ngā tau 1880, ka mōhio whānuitia ko Kēmureti te taone Kōti o Waikato. Ko ngā whakawākanga te tīmatanga noa iho, i tua atu i tērā ka pua mai he māngai mō te tangata Māori, he kaihokowhenua, he kaiārahi, he rōia, he kaiwhakahaere pāparakāuta, he kaiwhakahaere toa anō hoki (Boast, 2009, p. 444). I ngā whakawākanga, i noho ngā tāngata Māori i ngā pāpuni Māori i Kēmureti. Kei te mōhio he tokomaha o rātou nō Raukawa i te nui o ngā kēhi e whai pānga ana ki ngā wāhi motuhake o Raukawa. He hapori miro maha a Kēmureti i tēnei wā, he rerekē rawa atu i te āhua e kitea ana mohoa noa nei. Ka whakapae a Boast, ko te Kōti Whenua Māori pea te take e ora ana te taone (p. 444).

He huihuinga nui ngā whakawākanga kōti, koia anō rā ngā kimihanga nunui mō ngā taitara me ngā roherohenga motuhake, ā, he rite tonu te taenga atu o te tokomaha nō Raukawa ki ngā whakawākanga i Kēmureti, nāwai nāwai he rite tonu anō tā rātou hokihoki atu ki te kāinga (“Native Land Courts, Cambridge,” 1883). I te marama o Haratua, i te tau 1881 ka kite a Meiha William Mair kua kino ake te mahi uaua o te whakaoti i te tatauranga o te iwi Māori i runga i te āhuatanga i te haereere haere te tokomaha ki ngā whakawākanga kōti (“Major Mair, Native Agent, R.M., Auckland, to the Under-Secretary, Native Department”, 1881, pp. 2-3). Ka tae ki te kōkiritanga o te Kokoraho Karauna o Pātetere i Kēmureti i te marama o Huitanguru, i te tau 1881, ko te tūmanako ka tae atu te kotahi mano tāngata ki te whakawākanga (“The Native Lands Court,” 1881). He rite tonu te taenga atu o ngā kaipakihi nui nō Tāmakimakaurau ki ngā whakawākanga i te Kōti, ka noho ki waenganui i te hunga mātakitaki, i te taha o ngā tāngata Māori nā rātou anō i hoko whenua atu i mua tonu i te kimihanga (Boast, 2009, p. 446).

3.5.2 Te Hokohoko Whenua

I riro kē te nuinga o ngā whenua o Raukawa i ngā whakahaerenga a te Kōti Whenua Māori me ngā hokohoko i tua atu i te Karauna. Ehara i te mea i riro te katoa o ngā whenua i te raupatu me ngā hokohoko Karauna (Boast, 2009, p. 444). Ka tīmata ngā whakaritenga a te Kāwanatanga me Raukawa i te tau 1874, ā, ka kotahi atu ki ngā porohanga o Tātua East me Tātua West me te rohe o Pātetere². He pōturi te koke, ā, kāre he hokohoko tae noa ki te tau 1881. I te roanga ake o ngā tau 1870 me ngā tau 1880, he tūranga nui tō te Karauna i ngā mahi me ngā whakaritenga o Raukawa. Engari i roto i ēnei whakaritenga, he rerekē te huanga mai i te mea i riro ngā whenua i ngā hokohoko rāngai tūmataiti – waihoki, ehara i te mea i āta haere ngā mahi hokohoko nei. Ka matawhawhati kē te haere

² Tirohia te mahere 1.1 ki rō Hearn, 2008, p. 24

o ngā hokohoko whenua mai i te tau 1881 ki te tau 1883, koinei te wā i tau atu te Kōti Whenua ki te tihi³. Ka huri ngā tau 1880, he wā whai pānga ki ngā whakanekehanga o Raukawa, ā, he maha ngā kōrero e takoto ana i ngā niupepa o tēnei wā me he hiahia tō tētehi ki te arotake, ki te rangahau i ngā kōrero o tēnei wā. Whai muri ake i te tau 1886, i te whakaotinga o te Kōti i te take mō te porohanga Rohe Pōtae, ka rewa ake ngā hokohoko a te Karauna i ngā whenua o Raukawa i te Rohe Pōtae i mōhiotia inamata nei. I roto i tēnei rohe, ka whakaritea ngā whenua o Raukawa ki te ture, te whakataunga ki a wai i te tuatahi (Boast, p. 446).

Ka nui te hopo o ngā rangatira o te Kīngitanga i te mōhio ki ngā whakawākanga o te Kōti i Kēmureti. Kāre rātou i whakaae ki ā te Kōti whakaritenga i ngā whenua o waho atu i te pae raupatu o Waikato. I ētehi wā ka tae atu ētehi māngai Kīngi ki te Kōti i Kēmureti ki te tono kia whakakore te Kōti i te kēhi e haere ake ana – tē aro i te Kōti ngā tono nei. Tērā te nui o te mānukanuka i toko ake i ngā kimihanga me ngā rūri a te Kōti, nāwai rā i te tau 1873, ka kōhurutia tētehi kaipāmu nō te porohanga o Pukekura e ētehi kaitautoko Kīngitanga nō Ngāti Haua (Boast, 2009, p. 445).

3.5.3 Ngā Porohanga o Maungatautari

Ko ngā kēhi uaua e whai pānga ana ki te iwi o Raukawa, ko ngā whakawākanga o ngā porohanga o Maungatautari, ā, koinei i toko ake ngā tohe nui mō e whia kē tau. I te manawa tonu o ngā tohe mō Maungatautari ko ngā kōrero tuku iho nō mua mai i te kawenga o te Tiriti, heoi, ka whakauaua ngā pakanga me ngā raupatu o Waikato me te waiaro i poapoa i te iwi o Raukawa he hunga whakakēkē rātou. I te tau 1868, ka tirohia tuatahitia e te Kōti Whenua Māori ngā kēhi Maungatautari, ā, ka whakarato ngā whenua ki tētehi ohu o Ngāti Haua, he hunga kaipono ki te

³ Tirohia te mahere 1.3 ki rō Hearn, 2008, pp. 27-8

Kuini o Ingarangi⁴. E ai ki a Boast (2009), tē tae atu a Raukawa me Waikato ki te whakawākanga (p. 446). He maha ngā wā i tirohia anōtia ngā kēhi. I kōkirihia he kimihanga tuarua, heoi anō, tē āhei a Raukawa ki te whakahoki mai i ōna i ngaro ai nō te tau 1868. Ka whakauaua anō ngā take i runga i ngā kokoraho Maungatautari mai i te iwi o Ngāti Kauwhata. He whanaunga anō ki te iwi o Raukawa, ā, ahakoa i hūnuku rātou ki te tonga, he rite tonu tā rātou ungaunga ki te tomo mai ki ngā taitara Maungatautari. I te tau 1881, ka whakawā tētehi Komihana Pakirehua i ā rātou kokoraho, heoi anō, ka paopao kē (Boast, p. 446). He roa a Raukawa e whakatangetange riaka ana ki te aru i te tika, engari kāre rawa he hua. Ka tirohia anōtia te kēhi i te tau 1884. Ka pae mai tētehi kaitautoko nui, a Rewi Maniapoto; ka tuku mai tana tautoko ki te whakakaha i ngā kokoraho o Raukawa, ki te whakariterite i te kēhi me ngā rūri mō rātou. Engari tonu, ka hinga anō te kēhi (Boast, p. 447).

Tē mōhio ngā rōpū o Raukawa he aha te take i pēnā anō ai – he aha rātou i hinga ai. Ka ngana rātou ki te whai whakawākanga anō. Ko tētehi o ngā take mō te whai whakawākanga anō; i hē te Kōti i roto i tana whakataunga he mana tō Marutuahu i Maungatautari, ā , i āki rātou i a Raukawa ki te wehe atu (hei tā Kaiwhakawā Matua Macdonald ki ngā Whare e rua o te Huihuinga Matua, 1885, AJHR G-3, p. 1). Atu i tēnā, ko tā rātou whakapae, pēnā he hua o roto o tēnei hē, kore rawa nei e āhei ki te whakaawe i te mana whenua o ngā hapū o Raukawa i noho pū ki Maungatautari. Ka tohu atu ērā nō te hapū rongonui o Ngāti Whāita, kāre tō rātou hapū i parekuratia, ā, kāre hoki i heke ki te tonga (hei tā Kaiwhakawā Matua Macdonald ki ngā Whare e rua o te Huihuinga Matua, 1885 AJHR G-3, p. 1). Ka whakatū a Kaiwhakawā Matua Macdonald he whakawākanga motuhake i te 12 o Huitanguru, i te tau 1885, ki te whakapuare i te papa ki te hunga whai tono i hiahia ki te kōrero mō ā rātou tono. Atu i ngā amuamu mō te tika o ngā whakakitenga o te Kōti, he maha hoki ngā whakapae mō te tika me te ritenga o te kaiaromatawai,

⁴ E mōhio whānuitia ana, ko te hunga 'Queenite' tēnei. Hei whakatauaro i tēnei, ko ngā kaitautoko i te Kīngitanga, i mōhio whānuitia ko te hunga 'Kingite'.

waihoki te whakapae autaiā i mea ake i tāwaitia a Waata Tipa e rua rau pāuna e tētehi tangata, a Moon – i mahi ia mō ngā Kamupene Whenua i te tonga o Waikato i Kēmureti anō hoki, i runga ngā ingoa o ngā tamariki a te kaiaromatawai i te rārangi rangatira; waihoki, ko te whakapae kē kia kore e whiriwhiri i a ia i te mea he hoariri ia nō ngā pakanga o mua. He whakapae anō hoki e hāngai ana ki a Kaiwhakawā Matua Macdonald – i runga i te āhuatanga i whakawā ia i te whakawākanga o mua, kia kaua ia e noho ki te titiro ki te whakawākanga tuarua, i te mea i whakapau ia i tōna wā ki ētehi atu take anō, tē aro ki te kēhi, ā i runga i tōna kuare ki te Māori – ko te katoa o ngā whakaritenga i whakahaerehia i roto i te reo Māori – kāre e taea e tētehi te kī he aha ngā kōrero i tae atu ki ngā taringa o te Kaiwhakawā (Hei tā Kaiwhakawā Matua Macdonald ki ngā Whare e rua o te Huihuinga Matua, 1885 AJHR G-3, p. 1).

Ka whakapekahia te katoa o ngā tono whakawākanga. Ka whakatau a Kaiwhakawā Matua Macdonald, āe i pērā rawa te mahi tāwai a Moon ki te utu i te kaiaromatawai. Hei tā Kaiwhakawā Matua Macdonald (1885, pēnā he koha, pēnā he moni whakatārewa rānei, e whakapae ana ko te whakaritenga moni he mea whakaawe i te waiaro o te kaiaromatawai i roto i āna mahi ki roto i te Kōti (pp. 2-3). Tēnā pōhēhē tēnā, he kēhi tēnei ka whai wāhi kia tirohia anōtia. Heoi anō, kāre a Macdonald i whakaae ki tēnei waiaro i te mea, he nui te kaha i pau ki te whakatutuki i tēnei whakataunga (p. 3). Tērā tētehi atu whakapae ki te kaiaromatawai, e mea ana he tika te kōrero: i runga ngā ingoa o āna tamariki i te rārangi rangatira. He wā anō i whakaaro a Macdonald, kāre he kiko o te titiro anō ki tētehi kēhi kua tirohia rawatia i mua, ā, ko tōna waiaro kei moumou ngā marama i whakangao ki te whakatau i te kēhi (Kaiwhakawā Matua Macdonald, 1885, p. 2).

Ka whakapekahia ngā tono whakawākanga, engari ko te āhua nei, i mōhio whānui te hunga i noho i te tonga o Waikato he tika te whakapae mō ngā mahi tāwai a Waata Tipa. Ka haere tonu ngā tohe mō Maungatautari i

waenga i a Ngāti Haua me Raukawa. Ina kōkiritia he kimihanga motuhake mō Waata Tipa, ka wetekina ia i te tāwai i whakapaetia, engari ka kite tonu i tonu moni ia i a Moon, ā i mōhio pai rāua ki a rāua (Boast, 2009, p. 447).

I te tau 1886, he tukinga whai pū i waenga i ētehi hapū nō Raukawa me Ngāti Haua. I toko ake te tohe i runga i te tuku atu o te porohanga o Manukatūtahi-Otautahanga ki a Ngāti Haua. He whakawākanga tēnei i haere ake mō te wā roa, waihoki ka haere a Ngāti Huri me Ngāti Maihi (he hapū nō Raukawa) ki te whenua e kōrerotia nei. Ka hanga rātou i tētehi pā tūwatawata i reira, ka pūhia rātou e Ngāti Haua – me te mea hoki ka hakune rātou kia kore e pūhia tētehi matā ki a rātou (Boast, 2009, p. 447). I taua wā, ka haere tonu ngā mahi a te Kōti Whenua Māori kia whakawehewehe i ngā porohanga o Maungatautari.

3.6 HE MĀTAI TAKE TĀWĀHI

Ehara i te mea, ka pupū ake ēnei āhuatanga tohe whenua i Aotearoa noa iho. Ka tīkina ake tētehi tauira nō te Pokapū Rāwhiti, i waenga i te iwi Palestine me te iwi Hurai⁵. He take nui rawa atu tēnei kua tohenga mō te roanga ake o te rautau kua taha, ā haere ake nei. E ai ki a Bregman (2002), ko te kaupapa matua i kawē i te tohe nui nei, ko te mana whenua me te pae whenua (pp. 1-4). Tē kitea atu he whakaaetanga ā-tirohanga, ā-whāinga, ā-waiaro, ā-kāwanatanga anō hoki. I runga i te kaupapa o te tohe i te mana whenua me ngā pae whenua, ka kapohia he whakaaro mai i tāwāhi e kaha puta ana i ētehi whakaputunga, i ngā kōrero auraki me ngā kō taketake.

3.6.1 Te Rōpū Hiona

⁵ Hei whakamōhio i te kaipānui: ka whakamahi i te ingoa nei, te 'Hurai', kia tohu i te iwi i heke ki te whenua o Palestine. Waihoki he take nui tēnei e tohea ana i ēnei wā tonu pēnā he pānga tō te ingoa nei o te Hurai ki te tangata, ki te hunga tāngata rānei, mō te taha ki te ahurea, te whakapono, te whakapapa, te tuakiri (Fowler, 1999).

I te mutunga iho o te rautau tekau mā iwa, tērā tētehi rōpū nō Ūropi e kīa nei ko te Rōpū Hiona; he māngai iti tēnei nō te iwi Hurai, heoi anō he māngai whai whakaaro rerekē rawa atu i te iwi whānui (Bregman, 2002, p. 3). Ko tā rātou whakatau he whakawaimeha i te motu i nōhia e te iwi Palestine i runga i te whāinga kia tau he tūrangawaewae hou mō te iwi Hurai.

I te tīmatanga, kāre he mate o te hekenga mai o te iwi Hurai ki Palestine. Heoi anō, ka tupu te tokomaha o te Rōpū Hiona i heke ki Palestine me tō rātou tino wawata ki te whakahurai i te motu. Mā konā i ohore tangata whenua. Nāwai ka puta te tohetohe, kātahi ka puta te whawhai me te pakanga. Nō te tīmatanga mai, ko tētehi o ngā āhuatanga whakaawe i te ao ko te aranga ake o Hītara ki te taumata tāpuhipuhi. I runga i āna whakahau me te mahi a te hunga Hiona ki te karo i te kāwhakitanga o te iwi Hurai ki ngā whenua i te Uru, i haere te tini me te mano o te iwi Hurai ki Palestine (Bregman, 2002, p. 4; p. 23).

3.6.2 He Mahere Tāuteute Whenua

Pērā i tā te Kōti Whenua Māori, ka wawao mai te ope Kotahitanga o Ngā Iwi o te Ao. Heoi anō, kīhai rātou i whakaū i te rangatiratanga o te tangata whenua – ka tuku kē atu te rangatiratanga ki tauwiwi, ā, nāna te whenua i tāuteute (Betts, 1994, p. 20). I runga i ngā toimahatanga Hiona, ka taunakitia e te Kotahitanga o Ngā Iwi o te Ao kia tuku te rima tekau mā rima paihēneti o te whenua o Palestine ki te iwi Hurai hei whenua motuhake mō rātou. I pēnei te whakatau ahakoa e toru tekau paihēneti noa iho te taupori Hurai i te motu. Ka whānau mai te motu o Iharaira i te tāuteute nei, ka kōkiri tonu te tukitukinga o ngā iwi o Palestine ki te iwi Hurai. Heoi anō, kīhai te hunga Palestine i whawhai tae noa ake ki te wā i pēhi rawa te ope taua o Hiona i a rātou i runga i ngā tini whārona awatea. Hei tā te Pirīmia o Iharaira, a Golda Meir, korekau rawa he tangata taketake nō te whenua o Palestine i te mea ehara a Palestine i te whenua

tūturu (“Golda Meir statement to The Sunday Times,” 1969). He whakaaturanga pai tēnei mō te waiaro kaikiri o te Kāwanatanga, otirā, te iwi Hurai, ki te tangata whenua.

3.6.3 Te Taupatupatu Nui

Ka whakapae a Galnoor (2009), ko te taupatupatu nui ko te whakatau i te rangatiratanga, te mana whenua, waihoki te wāhi e noho nei te pae whenua (p. 74). Ka taea te whakataurite te horopaki o Palestine ki te horopaki o Aotearoa i runga anō i ēnei āhuratanga kua kōrerohia. He rite tonu te ia o te taupatupatu ahakoa he rerekē te momo āhua e whawhaihia ana i roto i ngā whawhai e rua. Ko te tango whenua, ahurea, tuakiri, me te mana whenua te pānga nui.

3.7 HE WHAKATEPE

He pānga nui tō ngā pou whenua o Raukawa ki te tuakiri o te iwi, ki te kore ēnei pou whenua, kua kore hoki te iwi e whakatōpū mai i tōna rohe. Kua ū tonu ēnei tohu whenua puta noa i ngā rau tau. Heoi anō ngā heke o Ngāti Raukawa ki te tonga ki te toutou he ahikā hou, ā, ka whakaata i ngā taura here o te iwi me ngā hapū. Ahakoa te pūmautanga o ēnei tikanga mana whenua, kātahi rā ngā uauatanga me ngā pēhitanga i kōkiritia e ngā whakahaerenga Kōti Whenua Māori. Ka riro te nuinga o ngā whenua i ngā whakaherenga muna o te Kōti Whenua Māori me ngā mahi a ngā mako whenua me ngā māngai whai rawa o te rāngai tūmataiti. Ko te mate whakatakao, ehara i te mea i tūpono ēnei mahi parahako i Aotearoa noa iho, ka whawhati mai tēnā āhua i ngā pari o tāwāhi hoki. He rerekētanga, he tauritenga anō hoki i waenga i te iwi Māori me Palestine. Heoi, e noho tonu nei ngā ōritenga o te mana whenua, me te hiahia ki te pare i te whenua tupu i te kapo a tauiwī.

4.0 NGĀ WĀ O MUA

4.1 HE WHAKATAKINGA

Ko te upoko nei ka waha i ngā herenga o Raukawa. He kōwhiringa tēnei i ētehi whakaritenga mana whenua i ngā wā o neherā me te wā o ngā tūpuna i te rautau tekau mā iwa. Kua whakaraupapa i te parekura o Ngāti Kahupungapunga, nā te parekura nei i whakatū ai te iwi o Ngāti Raukawa. Waihoki te pakanga o Ōrākau, te whakatinanatanga o ngā taura here ki iwi kē atu. Ka kōrero mō ngā honohononga me te takenga mai o ngā manga whakapapa kua tupu mai i te wā o te pakanga.

4.2 KO TE PAKANGA

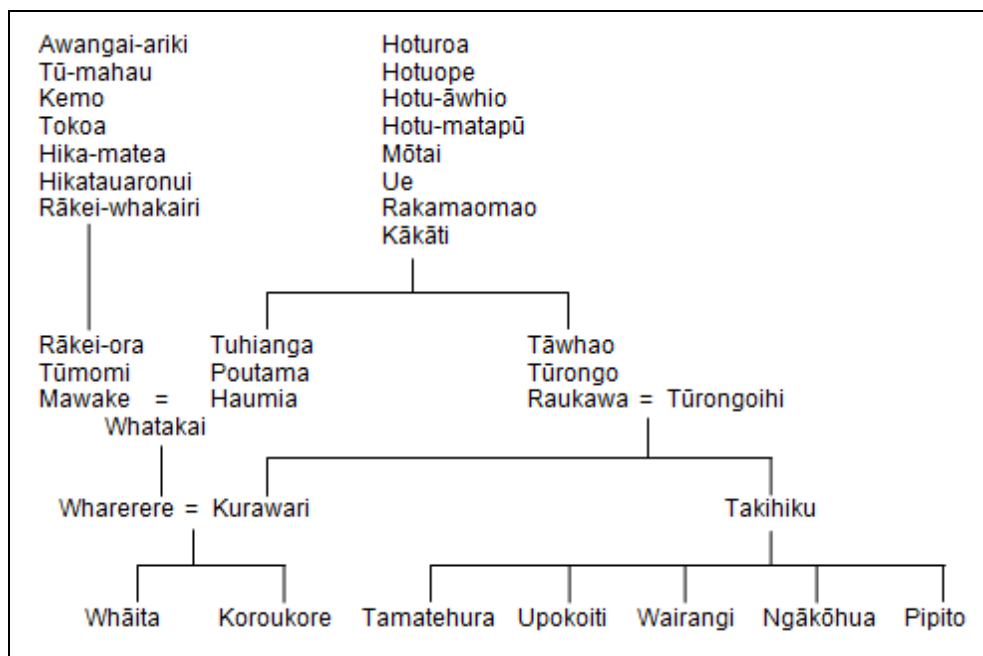
E whai iho nei he kōwhiringa pakanga i whakaawe i te iwi o Raukawa me ōna pae whenua tawhito. Ko ērā pae whenua tawhito i whakahuangia e ētehi kaumātua nō Raukawa i te pūrongo o Pouakani;

Ki te Wairere,
Horohoro,
Pohaturoa,
Ko Ongaroto,
Ko Whāita e,
Nukuhau,
Ki runga o Hurakia,
Hauhangaroa,
Titiraupenga,
Arohena,
Wharepūhunga,
Titiraupenga,
Whakamarumarū,
Te Pae o Raukawa,
Titiro atu ki te Kaokaoroa o Pātetere,
Maungatautari,
Ka titiro iho ki Wharepūhunga,
Ko Hoturoa, Pārāwera,
Ko te manawa rā o Ngāti Raukawa (Waitangi Tribunal, 1993, p. 20).

4.2.1 Ngāti Kahupungapunga

He mana nui i tutuki i a Whāita, Wairangi, Tamatehura, Ūpokoiti, Ngākōhua, rātou ko Pipito. Nā te raupatu i te iwi o Ngāti Kahupungapunga, i āhei te iwi o Raukawa ki te whakawhānui i tōna mana whenua i Waikato, i waenga i a Whakamaru me te moana o Taupō (Waitangi Tribunal, 1993, p. 20). Kua whakarite a Te Hiko (2010) i te roanga ake o te kāwai whakaheke o Whāita me ana karanga tahi me o rātou hononga ki te waka o Tokomaru mā tōna kaihautū, a Awangai-ariki;

Whakapapa 7: Te hononga o Raukawa ki a Tokomaru



(Te Hiko, 2010, p. 89)

I noho a Ngāti Kahupungapunga i te takiwā i noho ai a Tūrongo mā i Rangiaētea. E ai ki a Phillips (1989), he hāneanea ngā āhuatanga i waenga i ngā iwi e rua nei (p. 21). I tupu te pakanga i te wā i āna mokopuna, a Whāita mā. Nō te whakatupuranga nei, ko Kāwhia te manawa o te rohe o Tainui. I runga i te mana o Rangiaētea (te papa kāinga i whakatūria e Tūrongo me tōna iwi), ka huri te aroaro mana whenua o Tainui ki te rāwhiti. Nāwai rā ka huri te aronga mana whenua o te iwi o

Raukawa ki tua atu i te rohe ake o Waikato, ki te rohe tonu o Ngāti Kahupungapunga.

E ai ki a Gudgeon (1893), ko te rohenga tawhito o Ngāti Kahupungapunga i Waikato, mai i te awa o Pūniu, ā, whakatetonga ki te rohe o Te Whakamaru, tae atu ki te rohe o Taupō (p. 203). Koia rā te whenua e mōhio rawatia ana ināianei ko te rohe o Raukawa. Ka whakapuaki a Te Hiko (2010, p. 92), e whakapae ana ētehi o Raukawa, ko te raupatu o te whenua o Ngāti Kahupungapunga te take matua i whakapūmau i a Ngāti Raukawa hei iwi.

E ai ki ngā rau whārangi o Ngata (2004), kei roto i te pātere o Ngawaero e kōrerohia ana, kiki rawa te rohe o Ngāti Kahupungapunga i te manu, arā i Whakamaru me Tūaropaki; ko te matomato o te whenua nei tētehi take i parekura ai a Ngāti Kahupungapunga (pp. 68-70). Engari ko te take nui i tīmata te pakanga i waenga i ngā iwi nei, ka pēnei te hanga;

Ko nga iwi o Parahore e whakamahia ai i nga waa patu manu ki te patu mai i te manu ma Korokore⁶. Ka waiho teenei hei kino mo Ngaati Kahu-pungapunga ki te wahine a to raatou rangatira me toona iwi. Teeraa hoki kua tae te aawangawanga ki a raatou ko te raatou whenua taro ake ka tangohia e te iwi o Korokore mo raatou. Ko te tauritanga o Ngaati Kahu-pungapunga, ka patua koohurutia a Korokore (Jones & Biggs, 1995, p. 141).

Ka kino nei te kōhuru o te tuahine o Whāita, kātahi ka anga te tuinga atu o Ngāti Raukawa ki a Ngāti Kahupungapunga. Koia te parekura e kaha kōrerohia nei i ngā kōrero tuku iho. Koirā hoki te raupatu o te rohe o Ngāti Kahupungapunga. E ai ki a Grace (1959), Joseph (2010), rātou ko Te

⁶ He maha ngā whakaaturanga mō tōna ingoa ake. Hei tā Jones, ko Korokore tōna ingoa; hei tā Biggs whakatikanga i a Jones, ka mea a Kaiwhakawā Mair ko Korokore kē tōna ingoa (Jones & Biggs, 1995, p. 140). Hei tā Grace (1959), ko Korokoro (p. 9). Hei tā Thompson (2005), ko Korokore - waihoki, hei tā Te Hiko (2005), ko Te Raukore, ā, he puhi nō Raukawa (ka meatia ki roto i a Te Hiko, 2010, pp. 92-93).

Hiko (2010), ko te toenga patu i whakarere atu ki Te Arawa rānei, whakatetonga rānei, i moe iwi kē atu rānei. Heoi anō, he mahi anō te rangahau i ahatia ngā mōrehu o Ngāti Kahupungapunga. Ko te mea whakaharahara o te parekura nei, i whakawhānui ake tō Raukawa mana whenua ki te noho pūmau i te poho o Te Ika a Māui mai i tērā wā puta noa i te rautau tekau mā iwa. Mai i tēnei wā i nōhia, i whakatangatawhenuatia e te iwi te rohe whānui nei.

4.2.2 Ōrākau

He pakanga rongonui a Ōrākau, i tū i te tau 1864, ā, koinā te kōmata o Ngā Pakanga o Waikato⁷ (Boast, 2009, p. 141). Tokomaha nō te iwi o Raukawa i tae atu ki te whawhai mō te Kīngitanga. E ai ki ngā kōrero, tērā tētehi rangatira nō Raukawa me Ngāti Tekohera; nāna i tātaki te ope taua ki te taha o Rewi Maniapoto, Wi Te Karamoa, Rangi Te Rangihirawea, Te Whenuanui, rātou ko Te Waru Tamatea. I reira hoki ngā tamariki a Te Paerata, a Hone Teri, a Hitiri Te Paerata me tana tamāhine a Ahumai Te Paerata. Kei te kaha whakaatu tēnei i te motuhake o ngā tātai hono i te wā e karangatia ana te whakatōpūtanga o te hapū me te iwi. Ko te pakanga te karanga, ā, ko te mana motuhake te kaupapa i whakakotahi i a rātou.

I te tau 1888, he whakaminenga i huihui i te Whare Pāremata ki te whakarongo ki a Hitiri Te Paerata. I reira, whakapuaki ai te roanga ake o ngā kōrero mō te pakanga o Ōrākau. Ko te mea mīharo, he taketakenga matua ngā kupu āna, mōna i tae ā-tinana atu ki te pakanga nei. He mātāwaka i hou mai ki te pakanga nei. Nā tōna pāpā, a Te Paerata, rātou ko tōna tuakana, a Hone Teri Te Paerata, ko tōna matua kēkē, a Rāwiri Te Hirawea, i taki a Ngāti Raukawa; nā Te Whenuanui rāua ko Hapurona Kohi i taki te ope nō Te Urewera; nā Te Waru, Tamatea, rātou ko

⁷ E ai ki ētehi ko 'Ngā Pakanga o Waikato', e ai ki ētehi atu, ko 'Ngā Pakanga o Aotearoa'.

Raharuhi i taki te ope nō te Tai Rāwhiti; ā, nā Rewi Manga Maniapoto i taki a Ngāti Maniapoto (Te Paerata, 1888, p. 4).

Hei tā Te Paerata (1888, p. 5), ka whakatau ngā koroheke te wāhi whai huanga o Ōrākau hei wāhi whakatū pā, he tūtanga nō te pāmu o Cowan ka whiti atu ki tētehi repo hōhonu. Ka whakamārama a Te Paerata i ngā āhuatanga o te tukinga tuatahi o te pakanga nei:

Ka tūpono ētehi taua Pākehā ki ā mātou mahi, ā, ka whakahopo rātou i tā rātou ope. Kātahi ka whakarite tō rātou Tianara ki te whakaeke mai. Ao ake te rā, kua hui katoa ai te ope taua, ka whakaeke mai ki te pōrohe i tā mātou pā tūhāhā i hangaia ki rō uru rākau pītiti. I te mahi mātou i te roanga ake o te pō engari, ina whakaeke mai te ope taua, kāre anō kia oti. I ngana rātou ki te amohia te pā engari i kite tōku pāpā i a rātou, ko ētehi i te whakaawarua, ko ētehi atu i te maioro. Ina whakatata mai te ope taua, ka taipara rawatia. Kātahi ka taui rātou, ka mahue ērā i mate me ērā i tūākiritia (p. 5).

Putā noa i ngā kōrero a Te Paerata (1888, pp. 5-6), marau noa ētehi tūāhua tōrangapū ka puta ake i ngā kōrero me ngā whakatau i waenganui i ngā iwi me ngā rangatira;

Ka whakaeke mai te ope taua i tētehi taha kia taiari anōtia te kōkiri. Ka akiaki tōku pāpā me ētehi atu kikopuku ki te auta kia whai huanga ki ngā pōraru o te Pākehā, engari tē whakaae a Rewi Maniapoto. Ka taiari anōtia te kōkiri a te Pākehā, ā, kua haukotia tō mātou ake hokinga. Kāre ā mātou wai me ā mātou kai, ko te rīwai i kai matatia ki te tinei te kaha hiainu.

Tērā te hua o te wairua whakahē, heoi anō, ka hāngai tonu te aroaro ki te oranga tonutanga o te marea. E toru ngā rā e taiparatia ana te pā o

Ōrākau. I kerī rua hei whakaruruhau mō ngā wāhine, ā, i whakapeto ngoi ki te whakakaha, ki te whakapakari i ngā parahau (Te Paerata, p. 6).

Kātahi rā te whakatinanatanga o te māia o te iwi Māori. Ahakoa pau haere ai ngā hāmanu, ā, karekau ngā matā, ka whakauru kētia he karihi pītiti rānei, he puru wahie rānei ki ngā pū. Ka ukauka rātou i te takitakinga o ngā mahi toa a ngā tūpuna nā rātou te kōrero, “me mate te tangata, me mate mō te whenua” waihoki kāre te wehi i pā mai, nguha kē ana te ngākau (Te Paerata, 1888, p. 6).

Ka eke te rā tuatoru o te pakanga, kua whāiti te pōrohetanga i te pā. Ka tahuna e ngā taua he pohū, ā, ka whiu ki waenga pū i te pā. Ka mate, ka whara ērā i pāngia e te pahū. Ka tukuna e Tianara Cameron tana karere, “kāti te whawhai, kua pōrohe katoatia koutou. He koretake tō koutou tūnga. Ki te hohota tonu koutou ki te whawhai, ka mate koutou katoa, ā, ka mate hoki ā koutou wāhine me ā koutou tamariki” (Te Paerata, 1888, p. 7). Ka kawea te karere nei i te pā, ka wānanga ngā rangatira me ngā iwi i te tono o te Tianara. Hei tā Te Paerata, ka whakapuaki a Te Urewera kia hutia te haki mā, kātahi ka tatari kia pātata mai te ope taua ki te pā, ā, ina tono rātou mō ā mātou pū, ka taipara rawatia rātou, ka huakina rātou (p. 7). Heoi, kāre te marea i whakaae ki te mahi tinihanga nei, i te mea ehara tērā i te tū a te rangatira.

Ka tuku karere anō te Tianara, “tukuna ngā wāhine me ngā tamariki kia rere: mā mātou rātou e ārai kia kore e mate” (Te Paerata, 1888, p. 8). Engari ka tū ake tā Te Paerata tuahine, a Ahumai, ki te whakahau: “ki te mate o mātou hoa tāne me a mātou tungāne, he aha te hua o tō mātou oranga tonutanga? Me mate mātou ki te taha o ngā tāne” (Te Paerata, p. 8). I te kitenga atu o te whakaaro kotahi o ngā wāhine, ka mea a Hapurona rātou ko Rewi me Te Paerata, “Ake, ake, ake, ka whawhai tonu mātou mō ake tonu” (Te Paerata, p. 8). Ahakoa te pōuriuri o te Tianara

me tana ope taua, ka pīata tonu mai te māia kia haere tonu te whawhai. Ka toai te hāparangi a te marea i ngā kupu a Ahumai, ā, ka pūhia e Wereta te pokohiwi o Meiha Mair, te karere o Tianara Cameron (Te Paerata, p. 8). I runga i te mahi kaikaiwaiū nei ka whati te whakaritenga, kātahi ka kōkiri anō te taipara i ngā taha e rua kia kino nei hoki. Ka purua e rātou he pū nui i te whakaawarua, kātahi ka ngahoro te pā kia taea e te ope taua te whawhati mai.

I roto i ngā tātai kōrero a Te Paerata, ka whakaata mai ngā tikanga me ngā mātāpono o te tātai hono. Ki te arotake i te pakanga nei o Ōrākau, i whakakotahi ngā hapū me ngā iwi ki te tautoko i tētehi o ngā kaupapa o te Kīngitanga, arā, te mana motuhake. Waihoki, i raro iho i te kare o ēnei take pakanga, kua whakapūmautia ngā tātai hono o Raukawa, o Maniapoto, o Te Urewera, otirā ō rātou hononga ki te Kīngitanga.

4.3 NGĀ TĀTAI HONO

Pērā i tērā i kōrerohia i mua, e inaki ana te rohenga o Raukawa i ngā rohe me ngā whenua o iwi kē. Koinei tētehi o ngā momo honohononga o te iwi, heoi, kāre e ea i reira. He taumau i tuitui i ngā here, ā, i whakapūmau i te mana o te iwi i roto i ngā āhuetanga ohanga, pakanga, tōrangapū, hapori hoki.

4.3.1 Kauwhata me Tūkorehe

He maha ngā moenga i waenga i ngā uri a Raukawa me ngā uri a Whatihua, nāwai rā ka waihangatia mai ngā hapū pēnei i a Ngāti Mōtai, Ngāti Mahana, Ngāti Huri, Ngāti Korokī, Ngāti Tūkorehe me Ngāti Kauwhata (Hutton, 2009, p. 49). Whai muri ake i te raupatu o Ngāti Kahupungapunga, ka hoki mai ētehi o ngā uri a Raukawa, pēnā i ngā uri a Tamatehura, ki te noho i ngā whenua i Maungatautari, waihoki ka pērā a Kauwhata me āna uri. E āhua rehu ana te wā ake i whakatau rātou ki te

noho i Maungatautari; heoi anō tā Te Hiko (2010) whakahua, mai i te tirohanga o Raukawa ka whakapono ki te kōrero he wāhanga a Kauwhata me Tūkorehe nō te ope taua o Raukawa i raupatu i a Ngāti Kahupungapunga i Maungatautari, ā, mā konā rātou whai mana whenua ai ki reira (p. 258). He paku noa ngā kōrero taunaki ki te kī i noho a Kauwhata me Tūkorehe i Maungatautari i mua tonu i te raupatu o Ngāti Kahupungapunga. Ka whakapae a Roberton (1957):

Whai muri iho i a Pikirangi, ka haere a Kauwhata ki Puahua [sic] ki ngā taiheke o Maungatautari. Tērā tonu pea i hūnuku te katoa o te iwi. He hononga tō te nuku o Kauwhata ki te pakanga o Ngāti Kahupungapunga (p. 255).

He pūrongo tā Roberton (1958) ka whai mai i tērā, e mea ana:

E rua rau rima tekau tau whai muri i te taenga mai o Tainui, ka tātaki ngā tamariki mokopuna a Raukawa i tā rātou whakaanga tuatahi ki te iwi o Ngāti Kahupungapunga i te whārua o Waikato i waenga i a Maungatautari me Taupō. I wikitōria te ope o Tainui, kātahi ka noho i te whenua o te iwi i parekuratia – ka mōhio whānuitia ngā uri o te ope nei, ko Ngāti Raukawa. I taua wā tonu, tērā tētehi whānau nā Whatihua, i noho rātou i ngā taiheke raki o Maungatautari, taro rawa ka karangahia te rōpū nei, ko Ngāti Kauwhata (p. 47).

Ahako te hapanga i te kōrero nei, ko te āhua nei i whai mana whenua a Kauwhata i Puahue me Pukekura i runga i tō rātou hononga ki Raukawa i te parekura o Kahupungapunga (Te Hiko, 2010, p. 259). Ka pēnei kē te whakamārama a Ballara (1998): tae iho ki te rautau tekau mā waru, i noho tauwehewehe ngā hapū o Ngāti Kauwhata, arā a Ngāti Hinepare, Ngāti Tahuri, Ngāti Wehiwehi, Ngāti Werokoukou me Ngāti Ruru; ā, i noho rātou i te rohe o Maungatautari i ngā wāhi pēnā i a Pukekura, Rangiaowhia, Puahue me ētehi atu wāhi. He hoa noho tata ō Ngāti Kauwhata whiti atu ki te tonga i Maungatautari me te rohe o Te Kaokaoroa o Pātetere; koinei ngā hapū maha o Ngāti Raukawa i moe tahi me Ngāti Kauwhata puta noa i ngā tau (p. 148).

Ka whakahau a Te Hiko (2010, p. 259), ahakoa ngā tātai hono o Raukawa me Kauwhata mā Tāwhao, ehara tēnei i te take i whakamoe a Kauwhata i a Raukawa, ko te take kē ki te whakarite-ā-torangapū kia hāngai ki a Raukawa. E tautoko ana i tā Ballara (1998) kōrero, kāre i rauhi a Kauwhata i raro i te mana o Raukawa i te mea: ko te tikanga o te rauhi i tētehi iwi, hapū rānei, i raro i te mana kotahi, ko te heke i te tupuna nāna te iwi i whakatū; tē taea te whakahiato a Kauwhata i raro i te mana o Tāwhao i te mea ehara a Tāwhao te tupuna i whakatū i te iwi o Raukawa (p. 146).

I runga i tēnei tohenga, ka whakatau ngā kōrero tuku iho a Raukawa, ka āhei a Kauwhata ki te whakamau i tō rātou mana whenua i runga i tō rātou uku i a Raukawa i mua, ā i waenga hoki i te pakanga ki a Ngāti Kahupungapunga.

E whakapono ana ki te kōrero i whakahāngai hoki a Tūkorehe me āna uri ki a Raukawa i te raupatu o Ngāti Kahupungapunga i Maungatautari. Hei whakatauritenga ki ō rātou hoa o Ngāti Kauwhata, he mahira rite tonu tō Ngāti Tūkorehe ki te whakahāngai ki a Raukawa. Ka whakahau a Hutton (2009, p. 162):

Ahakoā kāre a Tūkorehe e heke tōtika mai i a Raukawa, ka pupuru tonu te hapū nei i ngā here pērā i ngā hononga taua ki a Raukawa. Nā te kaha pupuru o Tūkorehe i ēnei hononga, ka whakaarohia e rātou, nō Raukawa ake rātou. Ehara tēnei i te āhuatanga rerekē, i te mea, he rite tonu te whakahiato o ngā hapū ki te whakakaha i ngā angitū whai hua, ki te parahau i runga i te ngākau kotahi anō hoki.

Mutu ana te parekura o Ngāti Kahupungapunga, ka noho a Ngāti Tūkorehe i tētehi pā i te tihi o Maungatautari, e kīa nei ko Te Weraiti. Ka

noho hoki a Ngāti Tūkorehe i ētehi wāhi i Wharepūhanga me Te Kaokaoroa o Pātetere, pērā i Tāpapa. Toitū te noho o Raukawa, Kauwhata, me Tūkorehe i Maungatautari tae noa ki te rautau tekau mā iwa.

4.3.2 Te Atainutai me Te Rangīta

Ka toro atu te parekura o Ngāti Kahupungapunga ki ngā whenua i te tonga, i tua o te awa o Waikato, whakateuru mai i Ātiamuri ki Whakamaru, ā, ki tahaki i te pito raki o te moana o Taupō. Hei tā Jones & Biggs (1995), tērā te tamaiti a Whakatere, te mokopuna a Raukawa, ko Poutūterangi te ingoa – ka noho ia i te pito e kōrerohia nei, i te wāhi ake o Manukueke, he tata atu ki Maraeroa (p. 197).

I tēnei wā, ko Raukawa me Ngāti Tūwharetoa noa iho ngā iwi i te noho i te takiwā o Taupō me te puku o Te Ika. I runga i te raupatu me te whakamoe i a Ngāti Kurapoto me Ngāti Hotu, ka tupu te mana whenua o ngā tamariki me ngā uri o Tūwharetoa, ā, koia i whakahautupua te iwi rangatahi i te rohe nei. Heoi anō, i taua wā tonu, he iwi anō e noho ana i te taha hauāuru o te moana, e kīa nei ko Ngāti Tama (Grace, 1959, p. 152). E mau whānui ana, nō Te Arawa a Ngāti Tama, engari i te noho pāhekeheke te iwi nei i runga i te pananga atu i tō rātou kāinga tōmua, i Pukeroa i Rotorua; i panaia hoki rātou e ngā iwi o Tainui i Kakepuku (Ballara, 1998, 117-119). Hei tā Grace (1959):

Ina whakatau tēnei iwi i tō rātou mana whenua i ngā tahatika hauāuru o te roto, ko Ruawehea (te mokopuna a Tūwharetoa) te tino rangatira o Taupō. Ka rangona e ia te taenga mai o tētehi iwi tauhou nō Rotorua. Ka tau te iwi me ētehi o tō rātou pūwhero ki reira. Ka whakararuraru tēnei i a ia i te mea kāre tōna mana i toro atu ki te iwi manene, nā reira ka āta whakarite kia tōia rātou katoa ki raro i tōna mana. He pā tōna i Karangahape, i Pūkawa, i Tokaanu, me ētehi wāhi huri noa i te roto.

I tētehi rangi, ka rewa ake tōna waka, ka hoe atu ki Waihaha. Kia tae atu ki te tahatika, ka whakatangi i tāna pūkaea, me te hāmama, ‘Tō roro, tō roro, na e!’ Takaia mai he kai māku!’ Ka rangona e Rongohaua me āna karanga i te pahū o te pūkaea, ā, ka mōhiotia nā Ruawehea. Hinga noa ake anō i te mōhio ki tōna wairua hākiki me tōna āhua whakatarapī. Ka mōhio hoki rātou i te toro o tōna mana i Taupō whānui. Mea kau ake ka whakarite he kai māna, ā, kua tika i tana taenga atu ki a rātou (pp. 152-153).

Ka haere tonu ā Grace whakamārama, pēwhea i makaia ai ngā rangatira o Ngāti Tama i raro i te tāwharau o Ruawehea. E kōrerohia ana te whānui o ngā mahi nanakia a Ruawehea ki a Ngāti Tama ki rō Locke (1882), Gudgeon (1893), me Jones & Biggs (1995) anō hoki.

Ka haere te wā, ka takahi tonu a Ruawehea i te mana o Ngāti Tama; he rite tonu āna tono mō te kai, mā te tangi o te pūkāea me te kanga, nāwai rā ka whakatakariri katoa a Ngāti Tama. Koinei i rau atu ētehi o ngā uri o Raukawa ki ngā kōrero. Tērā tētehi rangatira o Ngāti Tama, ko Te Atuareretahi, ka haere ia ki Maraeroa ki te kite i a Poutūterangi. Ka whakamōhio atu a Te Atuareretahi i te takatakahi a Ruawehea i a rātou, ka mea a Poutūterangi:

“na tere mai anō tō rangatira me tana kanga, tahu i ngā ahi kia rehua te pā e te auahi. Engari kua e whakarite kai. Kia ū mai ia, waiho kia hau mai ia ki tō whare, ā, kia tomo ki roto, patua! Whakamahia tēnei mere hihi tohorā!⁸ (Grace, 1959, p. 153).

Ka whakahokia e te kōrero a Jones & Biggs (1995) te whakaritenga o te tūtakinga – ko Poutū kē te mea i haere ki te kite i a Ngāti Tama, ā, ahakoa te rite tonu o te whakahau, kāre e kōrerohia te mere hihi tohorā (p. 197). Ka tūtohu noa a Hutton (2009), ka whakapono a Ngāti Tama he uku a Poutūterangi; ā, tuarua, i te whakamahi a Poutūterangi i a Ngāti Tama ki

⁸ Ko Paroparohoumea te ingoa o te mere hihi tohorā nei (Grace, 1959, p. 153).

te takahi i te mana o Ruawehea (p. 77). Ka whakaae a Gudgeon (1893) ki te tūpono tuarua i roto i tāna kōrero:

He kanga tino nui tēnei, hei tā Poutū whakahau, me patu e Ngāti Tama a Ruawehea i tana haerenga i muri atu ki Kiritane. He whāinga anō tō Poutū engari kāre ia i tatari ki te ariā o tana whakahau, ka hoki kē ia ki tōna kāinga i Manukueke (p. 158).

Ka whai a Ngāti Tama i tā Poutū whakahau. I tana haerenga i muri atu ki tō Ngāti Tama wā kāinga, ka whakatāewatia, ā, ka patu i a Ruawehea. Ka herea tōna tinana, kātahi ka whakairi i muri i tētehi hīrere kia kore e kitea. Ka patua hoki tana hikuroa, hāunga tētehi tamaiti, a Te Pukeihaua, ā, taihoa ake ka whai te tamaiti nei i te ingoa, Te Rangiita. Ka ora tonu ia i runga i te hoto o tōna ngākau ki ngā takune o Ngāti Tama – ka noho ia ki te wāhi i ū ai ngā waka, nāwai ka whakarere atu. Ko Te Rangiita te mokopuna o te teina a Ruawehea; nā Taringa ko Tūtetawhā, nā Tūtetawhā ko Te Rangiita (Hutton, 2009, pp. 77-78).

I te ngaronga o Ruawehea, ka kimi tōna iwi i a ia. Hei tā Grace, ka kitea e rātou te tūpāpaku ki muri i te hīrere, ka tirohia ngā motu, ā ka mōhio nā Ngāti Tama. Hei tā Jones, ka whati te taura e here ana i te tūpāpaku, ka taka iho kātahi ka tapatu ki te moana, ki reira kitea atu e tētehi ope hoe waka nō Tūwharetoa. Ka āhukahuka ki a Ngāti Tūwharetoa nā Ngāti Tama i patu a Ruawehea, nā reira ka tuku atu te ope taua ki te turaki i a rātou. Ka patu a Te Rangiita i tētehi rangatira i te ngana ki te whakarere atu; nā tēnei i whānui te rongu o te māia o Te Rangiita puta noa i Tūwharetoa (Jones & Biggs, 1995, p. 197), ā, nā tōna māia ka tapā, ko Te Rangiita⁹ (Grace, 1959, p. 155). Kia mōhio mai, he tokoiti nō Ngāti Tama i whakarere atu, ā, i noho ki wāhi kē pēnā i a Ātiamuri me Ōrākei Korako. I muri iho, ka whakataurite a Ballara (2004) ka whakamoe ki ngā uri o Tia, waihoki ērā o Ngāti Rangiita (pp. 95-96).

⁹ Hei tā Grace (1959, p. 155), ko te tikanga o te ingoa o Te Rangiita – kia patua kia mate.

Ko te pānga ki a Raukawa, e ai ki a Grace (1959), ka mate hoki a Poutūterangi i te mea i te noho tahi ia me Ngāti Tama (p. 155). Ka whakawhānui ake a Jones & Biggs (1995):

I te mea na Poutuu me tana iwi te tikanga i patua ai a Rua-wehea, kaaore i waihotia e Ngaati Tuuwhare-toa kia noho pai ana a Poutuu me Ngaati Raukawa. I muri tata mai i te horonga o te paa o Keritaane, ka haere te ope a Ngaati Tuuwhare-toa ki te whakaeke i te paa o Poutuu i Manu-kueke. He pakanga nui teeraa i mate ai a Poutuu me tana iwi. Na teeraa parekura ka mutu te nohoia e nga iwi o Tainui o te taha hauaauru o te moana o Taupoo. Aa, ka nohoia e Ngaati Tuuwhare-toa tae noa mai ki teenei waa. Otiraa, ko nga hapuu o Ngaati Tuuwhare-toa kei eeraa takiwaa e noho ana he nui oo raatou hekenga atu i roto i nga whakapapa o Tainui, aa, kei roto hoki i a raatou nga uri o teeraa tupuna, o Poutuu (p. 203).

I runga i te kōrero a Jones & Biggs, i mutu te noho o ngā iwi o Tainui i te taha uru o Taupō, māraakerake te kitea, nā te parekura o Ngāti Tama i toro whakateuru te mana whenua o Ngāti Tūwharetoa. Heoi, koinei i toko ake ngā tohe i waenga i ngā uri o Raukawa me Tūwharetoa (Hutton, 2009, p. 79).

Nā Whakaterere ko Poutūterangi, ā, nā Ūpokoiti ko Te Atainutai. Ko Ūpokoiti tētehi o ngā tamariki a Takihiku, ā, i tātaki tahi rātou ko Whāita mā i te raupatu o Ngāti Kahupungapunga. Ka noho a Te Atainutai i Te Pā o te Ata; ko Te Tarata te ingoa o te takiwā, ā, kei te tonga o te porohanga o Pouakani, i te taha raki o Taupō (hei tauira, tirohia Waikato MB No. 26, pp. 52, 65, 91, 161). Ka hipa ngā tau i te matenga o Ruawehea me Ngāti Tama, nāwai, nāwai ka whakaaraara a Te Atainutai i tētehi ope taua ki te rapu utu mō te patunga o Poutūterangi. He paku rerekē i waenga i ngā whakamārama a Jones & Biggs (1995) me ngā whakamārama a Grace (1959).

Hei tā Jones & Biggs (1995, p. 205), ka toi atu te ope taua o Te Atainutai i te awa o Waikato kia ū ki te pito rāwhiti o Taupō. Ka ngana a Te Atainutai me tana ope ki te whakaeke i te pā o Te Whakaangi engari kāre i tutuki i te ope nō te kaitā o ngā parepare me ngā maioro. Ka anga te aro o Te Atainutai kia mahue iho, ka mutu:

Ka taka i teetehi rangi ake he whiuwhiu tao iho te mahi a te paa, ka perea iho he maanuka, he mea aata whakakoikoi. Tuu tonu ki a Ata-inutai. I tana tuunga, kaatahi ia ka karanga ki tana iwi kia whakataha i te paa. Te nekehanga mai o tana iwi ki tahaki kaatahi ka karanga ake, 'Na wai au?' Araa, e ui ana kia moohio ia ko wai te tangata naana ia i whara ai. I kite ake anoo ia i te tangata naana i whiu iho te koikoi, engari, ko te ingoa taana e whai ana kia moohiotia e ia (Jones & Biggs, p. 205).

Tū mai ana te tokomaha o ngā toa o Ngāti Tūwharetoa ki te tohe nā rātou te koikoi i tū ai a Te Atainutai:

Ka whakahokia eeraa toa katoa e Ata-inutai. No muri rawa ka whakaputa atu ko Te Rangi-ita, ko te karanga iho, 'Ko ahau te tangata!' Moohio tonu ake a Ata-inutai e tika ana. Ko tana karangatanga atu kia puta mai a Te Rangi-ita i te paa kia houhia te rongo (Jones & Biggs, p. 205).

Ka ahu pēnei kē te whakapuakitanga a Grace (1959, pp. 156-157), kua whānui te rongo o Te Rangiita puta noa i Tūwharetoa. I hanga ia i tētehi pā tūwatawata, ko Whakaangi te ingoa. I kō atu i te pā nei, ko te wāhi noho o Waikari, ā, ki reira tīmata ai te whakahau o te ope taua o Te Atainutai;

Ka toi atu te ope taua ki Taupō mai i Mangakino, ka puta atu i Waihaha. Ka whiti atu ki Rangatira, i Karapiro, ā, ki reira tūpono ki a Tūwharetoa-a-Tuhiroa me tōna hoa wahine a Hinetao.

I te matenga o tana hoa wahine, ka whakarere atu a Tūwharetoa-a-Turiroa ki te pā o Whakaangiāngi, ā, ka whakamōhio atu i a Te Rangīita me Tūmatangaua i ahatia ia kia rite ai rātou mō te whakaekenga mai o te ope taua o Te Atainutai.

I muri atu, ka whai te ope taua i a Tūwharetoa-a-Turiroa tae noa ki te awa o Tauranga-Taupō. Heoi, ka haere mā te tahataha raki ki te pā o Waikari, ko Horotanuku te ingoa. Ka horomia te pā, ā, ka patua a Waikari me tētehi atu rangatira, a Te Papia, e tētehi toa, ko Motiti.

Ki reira oti ai ngā āpitianga a Grace, ka tūhono anō ki ngā kōrero i puta i a Jones & Biggs.

Mai i reira ka kotahi atu te ope taua ki Whakaangiāngi, engari kua whakatūpato kētia te pā. Ka whakaeke rātou, ā, ka tuki atu te huata a Te Rangīita i te taiaha a Te Atainutai. He toa rāua tahi, ka haere tonu te tukinga nei, kātahi ka poka te waewae o te rangatira o Ngāti Raukawa, ā, ka hinga ia. Ka tika tonu tana whakahau i tana ope ki te hoki whakamuri.

Ā, i konei hāngai tahi anō ngā kōrero ki ā Jones & Biggs kōrero. Hei tā Grace (1959, p. 157), ka tono a Te Atainutai ki tana kairaupatu ki te puta mai kia whakamihia ōna pūkenga pakanga. Ka tū ake ngā tini rangatira kia whakamihia ia. Engari i mōhio kētia te mea tika nā tōna moko. Ka tū ake a Te Rangīita ki te reu, ā, i te tirohanga, ka mōhio tonu atu te tūrora koia. Ka maioha rāua ki a rāua, kātahi ka houhia te rongō (Grace, 1959, p. 157).

He mea motuhake te mahi i waenga i a Te Atainutai rāua ko Te Rangīita hei whakatauiria i te tupu o te mana o ngā taha e rua – i mua i te aroaro o te marea, ka whakanui a Te Atainutai i tō Te Rangīita pūkenga ki te whawhai, waihoki ka whakanonoi kia tohu ake te tangata tika; ka whakatairite pea tō Te Atainutai pūkenga me te whara o Waikari (kāre e kore hei ngaki i te mate o Poutū). Ka whakatina i te rongomau mā te

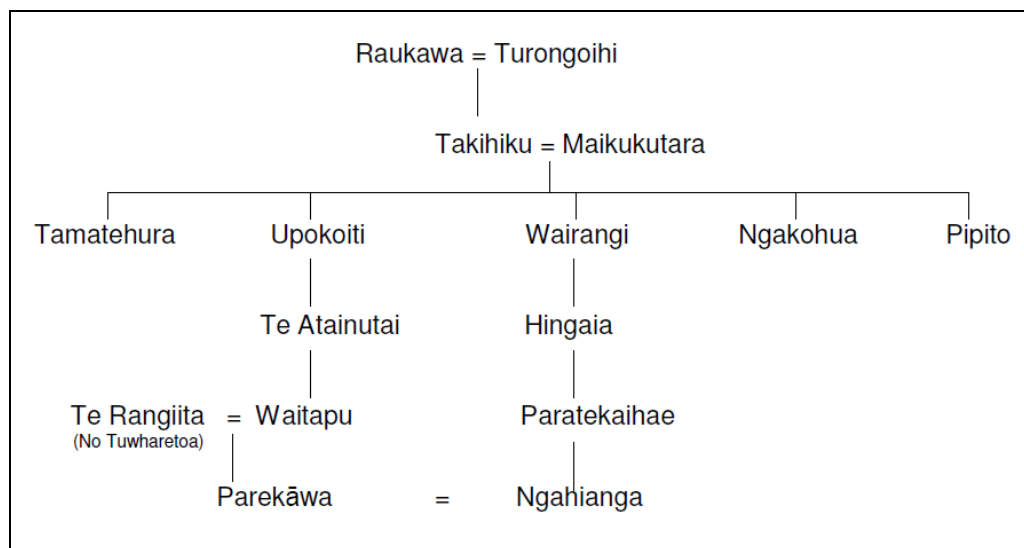
moumouranga i ngā iwi e rua. Ka tukuna e Te Atainutai tāna tamāhine, a Waitapu, hei hoa wahine mō Te Rangīta, kia here i ngā iwi. Ka whakahau a Grace (1959), ka takoha a Waitapu ki a Te Rangīta hei tatau pounamu (p. 157).

Ka whānau tamariki a Te Rangīta rāua ko Waitapu. Ka whakahau a Jones & Biggs (1995):

Ko teenei hononga tangata teetehi o nga huarahi nunui o Ngaati Tuuwhare-toa ki nga kaawei o runga i a Tainui, aa, tae noa mai ki teenei raa, takitahi nei nga hapuu o roto i a Ngaati Tuuwhare-toa kaaore i puta mai i roto i a Te Rangīta raaua ko Waitapu (p. 207).

Tokowhā ngā kōtiro i whānau tōmua mai, ko Parekawa, Te Urukaihina, Te Piungatahi, rātou ko Toreiti. He mana nui tō te mātāmua, a Parekawa. He tupuna nui a Parekawa ki a Raukawa i te mea i hoki atu ia ki ngā kāwai whakaheke o Raukawa mā tōna hoa tāne a Ngahianga. He uri a Ngahianga nā Wairangi, ā, ki raro iho e whakaatu atu te rārangi whakapapa:

Whakapapa 8: Te hononga o Raukawa me Tūwharetoa



(Hutton, 2009, p. 81)

Ka pā pōuri a Te Rangiita i te korenga i whānau mai ai he uri tāne mōna, ā, ka wehe atu ia i a Waitapu whai muri iho i te whānautanga mai o tā rāua tamāhine tuawhā. Heoi anō, ka mea ake a Waitapu, 'Kei te tuhera tonu te awa i Nukuhau' (Jones & Biggs, 1995, p. 207), ā, ka taea tonu e ia te whakawhānau tamariki.

Hei tā Jones & Biggs (1995, p. 207), ka haere a Waitapu ki tana matua, a Te Atainutai, ā, ka karakia te tohunga rā i ana karakia kia tau ai ngā raruraru o tana tamāhine. Kia hoki a Waitapu ki a Te Rangiita i Marae-koowhai [sic], ka whai pū ia i ngā tohutohu a te tohunga kia whānau mai ai he tamaiti tāne:

Tino nui rawa te ora o te ngaakau o Te Rangi-ita moo te hokinga atu o Waitapu ki a ia, aa, i te wa i whaanau ai, ka puta mai te tamaiti, he taane. Ka tapaa te ingoa, ko Tama-mutu. E toru atu aa raaua tamariki, he taane anake; ko Manu-nui, ko Meremere, ko Tuu-te-tawhaa te whakapaakanga. Ko eenei tamariki a Te Rangi-ita kei roto i ngaa koorero nunui o Ngaati Tuuwhare-toa e koorerotia ana (Jones & Biggs, p. 207).

Ka whakawhānui a Grace (1959), i te noho a Waitapu i Maungatautari i te whānautanga mai o te tamaiti. Ka māharahara ki te whakaaro o tōna iwi, he mea whakatumatuma te tamaiti nā reira ka hunia tōna āhua. I muri iho ka mōhio a Te Rangiita, he tamaiti tāna, ā, ka tuku atu te karere kia hoki mai a Waitapu ki Taupō:

Ka tukuna tana tono i te raro tītēre e mānukanuka ana a Ngāti Raukawa ki te whakarite anō i te whakahoanga o te rangatira rā me tōna hoa wahine. Ka wehi rātou i ngā whakawhitiwhitinga kino ka puta i waenga i ngā iwi e rua pēnā he wehenga roroa ka haere ake. He iwi whai kaha a Ngāti Tūwharetoa ināianei nā reira kāre e mutu

ngā hua o te hononga. He oranga ngākau i te taenga mai o ngā karere nei (p. 158).

He rerekē te kōrero nei ki tā Jones & Biggs (1995), e kī ana ‘i whaanau a Tama-mutu ki Marae-koowhai, ki te kaainga anoo o Te Rangi-ita, e tata atu ana ki Mookai (p. 208).

Ka whakaatu noa a Grace i ngā koiwi o te kōrero mō ngā whakawhanaungatanga o ngā iwi o Ngāti Tūwharetoa me Raukawa. E pā pōuri tonu ana te iwi ki tā Te Atainutai kōhuru i a Waikari, nō Tūwharetoa anō hoki rātou, ka whakarite kia patu i a Te Atainutai i tana haerenga mai ki te tohi i a Tamamutu. E tika ana rātou pēnā ka ngaki i te mate, pērā i tā Jones & Biggs (1995) whakahau, “ko te maahunga o Waikari kua meatia e nga iwi o Tainui hei mauri tuna ki nga paa tuna o Kaawaa te take o Kakepuku” (p. 209). Ka tika ngā whakaritenga, “i raro iho i te pari o Pou-akani ka mau i a raatou, aa, ka patua. Ka mate i konei a Atainutai” (Jones & Biggs, 1995, p. 209). Whakataritari ana tēnei i te ngakinga mate hei kawenga mō ngā uri o Te Atainutai, ka heke iho he whakatupuranga kātahi ka tū ake a Tūtetawhā, te pōtiki a Waitapu.

Kua whakamāramahia e Jones & Biggs (1995), e Grace (1959) anō hoki te whakapapa o ngā kōrero. Kei raro iho te roanga ake o tā Jones & Biggs whakamārama. He ritenga tō te kōrero nei ki tērā i whakaputaina e Hitiri Te Paerata i te Kōti Whenua Māori, i Taupō (Taupo MB No. 4, Taupouiatia West, p. 288; e mea ana ki rō Hutton, 2009, p. 83). Kia mōhio mai, he pānga tō ēnei kōrero ki a Tūwharetoa me Raukawa. Mō Raukawa ake, ka tohu i te whakatauritenga o ngā whakawhitiwhitinga i waenga i ngā iwi e rua nei; mō Tūwharetoa, he tino take tō ēnei kōrero ki te whakapapa o te aranga ake o ngā uri o Te Rangiiita hei rangatira mō tērā iwi.

E takoto tonu ana te mate o Te Atainutai. Kua tamaiti whaiwhakaaro te pōtiki a Te Rangiita rāua ko Waitapu, a Tūtetawhā. Nā te meatanga ake o te koroua rā, a Ure-taaraia¹⁰ ki a Tūtetawhā, “Mate ngaro noa to [sic] koroua!” (Jones & Biggs, 1995, p. 209), ka ruiruia te hiahia i roto i a ia kia ngaki te mate o tōna koroua. Nāwai rā, ā ka whiti atu ki Wharepūhanga, ka whakaara he ope taua, ka hīkina ake e Whitipatatō te kakau o te toki, me tana whakapuaki (Jones & Biggs, p. 209): “Waiho, maaku e tihoi noa ake te tahora nei.”¹¹ Ka tau iho te pō kātahi ka whakaeke te ope taua i te pā, ao ake i te rā, ā, horo katoa ana te pā. Ka ngana a Whitipatatō ki te kimi i a Tūwhare-toa-a-Turiroa. I roto i te pōuriuri ka kite a Whitipatatō i a Tūwhare-toa-a-Turiroa e oma ana i te tahatika o te moana. Ka whāia haeretia e Whitipatatō, ā, ka tae ki tētehi wāhi pari. Ka whakangaro a Tūwhare-toa-a-Turiroa ki roto i tētehi kokoru, kāore hoki he putanga mōna. Ā, mutu rawa iho, nā te ringa o Whitipatatō i mate ai a Tuuwhare-toa-a-turiroa, hei ngaki i te mate o Te Atainutai (pp. 209, 211).

He nui noa atu ngā kōrero mō ngā āhuetanga o ngā whakawhitiwhitinga i waenga i a Tūwharetoa me Raukawa puta noa i te moka raki o Taupō me te moka hauāuru o Taupō, heoi anō e kore e ea katoa i ēnei tuhituhinga. E whakahau ana, mā te moe o Te Rangiita rāua ko Waitapu, mā ā rāua tamariki anō hoki, ka āhei ngā hapū maha ki te whakapapa atu ki ngā iwi e rua nei. I te haere o te wā, ka mōhio kētia ētehi o ēnei hapū, he Tūwharetoa, waihoki ētehi atu ka hāngai kē ki a Raukawa. Ka taea hoki te pēwhea i tēnei takiwā e kaha whakakikorua ana, e kaha inaki ana ngā rārangi whakapapa me ngā āhuetanga tōrangapū o te iwi.

4.4 HE WHAKATEPE

Kua whakatauiria mai te upoko nei i ētehi kawenga whakapūmau i te mana whenua. Ahakoa te pūtake, ahakoa te otinga atu, ka tautokongia te mana

¹⁰ Ka kī a Grace (1959), ko Te Uretaraia [sic] (p. 177); ka kī a Gudgeon (1904), ko Ure-tarai [sic] (p. 259).

¹¹ Ko Te Tīhoi te ingoa o taua mānia i puta ai taua kōrero rā (Jones & Biggs, 1995, p. 209).

whenua i te parekura o Ngāti Kahupungapunga, waihoki i te pakanga o Ōrākau. Nā te mana whenua i ora ai te iwi me te hapū, nā te whakapapa i ū tonu te mana. Ka kitea ngā taura here o Kauwhata me Tūkorehe, otirā ērā o Te Atainutai me Te Rangīita, ka mutu, ahakoa ngā kato kua tiritiri ki whea atu kē atu, tē whawhati ngā tātai hono. Mohoa noa nei, ko te hauhakenga o ēnei kōrero tuku iho te whakatinanatanga o ēnei katonga mana i takea mai i ērā pakanga me ērā tātai hono. He rau mahara, he tohu whakamana i ngā whakatutukitanga a ngā tūpuna pēnā i heke i te rau o te patu, i heke ā-whakapapa nei rānei.

5.0 TE WHANAKETANGA

5.1 HE WHAKATAKINGA

He tohunga whanake a ngāi Māori mai rā anō. E whakahau ana a Tomlins-Jahnke (2011, p. 2), he whakatupuranga tō te pūmanawa nei i te wā i tau mai te Māori ki Aotearoa; ka tūtaki ki ngā wero hou o te whenua nei, kātahi ka whakahāngai i ngā tikanga mō te huarere me te taiao. Ka rere te wā, ā, ka nanao ngā tūpuna i ngā hangarau tauwiwi hei hua mō rātou, otirā, mō te ohanga o te motu i te rautau tekau mā iwa. He māramatanga i ā Ngata tuhituhinga atu ki a Buck;

“...the most remarkable thing to be found in Maoridom today is that after a century of the clash of Pakeha and Maori culture the Maori has got over the wonders of Western Civilisation and is settling down to a compromise – the adaptation of elements of both”
(Williams, 2001, p. 49)

5.1.1 Hauora, Mātauranga, Pāpori

Kia whiti mai ki te taiwhanga whanaketanga o tēnei reanga; e kaha kitea ana te hunga Māori i te pito ngoikore o te hauora me te mātauranga, he hunga e tino whakawhirinaki atu ana ki ngā momo ratonga pāpori o te motu, ā, kei te noho te tokomaha o ngāi Māori i ngā tatauranga rawa kore o te motu. Kua roa nei a Raukawa, otirā, te iwi Māori e aro ana ki ngā kaupapa o te hauora, te mātauranga, me te pāpori. Nō reira e tika ana kia whakamihia ngā kaupapa karo i ngā mate nei. He pakanga tēnei nā te ope taiohi o Ngata, Pomare, rātou ko Buck i kawē i te aonga ake o te rautau rua tekau. I whakapono a Ngata, ka āhei te whakamau i ngā taonga a ngā tūpuna, me te kapo i te rākau a te Pākehā kia tipu, kia rea.¹²

¹² Koia ngā kupu tohutohu hautupua a Ngata, “E tipu, e rea, mō ngā rā o tōu ao; Ko tō ringa, ki ngā rākau a te Pākehā, hei ara mō tō tinana; Ko tō ngākau, ki ngā taonga a ō tūpuna Māori, hei tikitiki mō tō māhun[g]a; Ko tō wairua ki te Atua, nāna nei ngā mea katoa” (Aotearoa, 1958, p. 56).

Ka whakamau i tēnei māramatanga i roto i te whānuitanga o te taiwhanga whanaketanga kia whitiwhitia te manawa o te kōrero whakapae nei.

5.2 RAUKAWA AKE

I te whakatikotiko noa o te taiwhanga whanake, ko te pae tata nei ko ngā mahi whakawhanake a te mana whakahaere o Raukawa. Heoi anō, e kauhoe ana a Raukawa i ngā tini mōrearea, nā reira me whakamahuki ā Raukawa mahi i roto i ngā ngaru me ngā ripo nui o te moana nei.

Ahakoā ngā papa harapaki o te ao hurihuri, ka whakauenuku tonu i ngā herenga ki te whenua, ki ngā mahi a ngā tūpuna. Mō Raukawa ake, ahakoā ngā wero o te ao hurihuri, ka ū tonu ki ngā tikanga i takea mai i ngā mātua tūpuna. Koia ka whakatairanga tonu i ngā pou e whā o te rohe, arā, Te Kaokaoroa o Pātetere, Te Pae o Raukawa, Wharepūhunga, me Maungatautari. Ka takitaki tonu a Raukawa ki te Tonga i ōna pae maunga kua mahue i tō Raukawa ki Uta whakapiringa ahakoā te mārama o te ahikā i ngā pae maunga o Tararua, i Kāpiti me Ōtaki.

Ka whakapūmau tonutia te rohe o Raukawa i te puku o te Ika, heoi anō, kua hōrapa te marea ki ngā tōpito o te motu.¹³ Nō reira i tēnei ao, he iwi noho taone ngā waihotanga o Raukawa.

5.2.1 Mana Whakahaere

¹³ I te Kaute Nui o Aotearoa i te tau 2006, e waru mano, kotahi rau, ono tekau mā toru te tokomaha i tohua nō Ngāti Raukawa (Waikato) rātou. E ai ki ngā tātaitai, e waru tekau mā rima pai hēneti o te hunga o Ngāti Raukawa (Waikato) e noho ana ki rō taone whai kotahi mano tāngata, neke atu. Ā, e ono tekau mā tahi pai hēneti e noho ana ki rō taone he toru tekau mano, neke atu, te tokomaha. Ko te wāhi matua e nōhia ana, ko te rohe o Waikato, ā, rua mano waru rau toru tekau mā rima te tokomaha. Waihoki, kotahi mano rima rau whitu tekau mā rima te tokomaha o Raukawa kua tau i te rohe o Tāmaki Makaurau (Statistics New Zealand, 2006).

I te takenga mai o te mana whakahaere o Raukawa¹⁴, ka karangahia te rōpū ko Ngāti Raukawa Trust Board, heoi anō ēnei rā, ko te ingoa i raro i te maru o te ture, ko Raukawa Settlement Trust (Raukawa Settlement Trust, 2009). Kua herea ngā rauawaawa o te kaiwaka nei kia tere i ngā tai karekare me ngā hau ngangana o manapori, o tautauāmoa, o tōrangapū, o ture anō hoki. Mā konā, whai niho ai te mana whakahaere i ngā mahi matatini a te Kāwanatanga. Ko te mana whakahaere nei o Raukawa, he waha mō te iwi. Kua whakamanahia e te ture, ngā māngai o ngā rohe, me ngā marae o Raukawa. I te tau rua mano mā iwa, i whakamanahia te kaupapa hou o Raukawa Settlement Trust kia rite ai ngā tikanga o te mana whakahaere ki te pupuru i ngā taunaha Tiriti, ki te whakahaere-ā-pakihi nei i ngā rawa o ngā kokoraho Tiriti.

He maha ngā ingoa karanga mō te mana whakahaere, ko te rūnanga tētehi atu anō ingoa e rangona whānuitia. Ka ahū mai te whaakaro o te rūnanga i waenga i te rautau tekau mā iwa i runga i te tono kia whakatakoto i ngā pae whenua o ngā iwi (Ballara, 1998, p. 286). Ka haere tonu ā Ballara kōrero, ka ara ake te hanganga rūnanga i te ngarohanga me te takahanga o te mana whenua o te Māori, me te hiahia ki te para i tētehi ara mō te iwi whānui. Ko te nuinga o ēnei whakatau Māori i whāngai i te whakapakihitanga o ngā iwi mohoa noa nei (Ballara, p. 283; Carter, 2003, p. 115).

Kua roa nei a Raukawa e tere ana i te moana tāpokopoko, ā, ko te otinga atu e whai ake nei. Kua māroha te mana whakahaere i ana ratonga i te rohe o Raukawa, ā, he pērā tōna nui, koia te ratonga pāpori me te ratonga hauora nui o te takiwā o Waikato ki te Tonga. Neke atu i te whitu tekau ngā kaimahi o te mana whakahaere nei, ā, e mahi ana rātou puta noa i ngā wāhanga pakihi o te mana whakahaere, pērā i te taiao, te reo Māori,

¹⁴ Hei whakamōhiotanga atu ki te kaipānui: ko te mana whakahaere te ingoa kua tohua whānui ki te Poari o Raukawa. E whakahuatia ana mō tō nanahi, mō tō nāiane, mō tō āpōpō hanganga Poari anō hoki.

te ratonga rangatahi, me ngā kokoraho Tiriti. Kua tau pū te mana whakahaere i te taone o Tokoroa, engari kei te whiti atu tōna torotoro ki ngā tōpito o te rohe mā ngā tari i tua kē atu, i Putaruru, Te Awamutu, me Matamata. Tā te mana whakahaere nei, he whakarite i ngā whakahaerenga pakihi o te iwi, hei tauira, kei a rātou te mana ki te kawē i ngā hua o ngā kokoraho Tiriti. E whai ake nei ngā wāhanga o te mana whakahaere o Raukawa me ngā whāinga e ngana ana ki te whakatutuki;

5.2.1(a) Taiao

He whānui ngā momo mahi a te Ohu Taiao, he pānga tō ngā kaupapa taiao ki te rohe o Raukawa me te motu whānui. Ko te rautaki o te Ohu Taiao kia pārure i te whanake kaupapa me ngā whakaritenga whakakaupapatanga, ture, mahi, hononga, maruāpō hoki. Ko ētehi o ngā maruāpō e whakaahua ana;

He taiao hauora e rari noa mai

He kaitiaki whai niho te hapori mō ngā rawa

Ka whakanuia, ka whakamanahia te tirohanga o Raukawa hei hua mō ngā reanga (Raukawa Settlement Trust, 2012)

Ko ngā whāinga o te Ohu Taiao kia taunaki i te pūioio o te iwi o Raukawa i te wāhi ki te penapena rawa me te taiao mā te;

Whakatairanga i te pūkenga kaitātaki

Tautoko-ā-mātātoa nei i te hanga raukaha

Aki-ā-mātātoa nei i te tirohanga Raukawa

Whanake me te atawhai he hononga matatū kia whakatutuki he painga whakarei mō te taiao (Raukawa Settlement Trust, 2012)

5.2.1(e) Hauora, Pāpori

E ai ki a Raukawa Settlement Trust (2012), koinei te aronga nui o te Wāhanga Hauora me te Pāpori o Raukawa: he iwi harikoa, he iwi hauora, he iwi whai rawa. Ka aru i tēnei maruāpō mā te whakatutuki i ngā whāinga nei;

Hangaia he haumi whai hua

Whakareia, whakapūmautia ngā hononga poutaki

Whakaratohia he ratonga kaitā

Whakarite mātātoatia te tukunga o ngā ratonga hauora me ngā ratonga pāpori

5.2.1(h) Te Reo

Tērā tētehi o ngā maruāpō matua o te Taiwhanga Reo, ko te reo Māori te reo mō te tini ā te tau 2030. Ka aru i te maruāpō mā te rārangi whāinga nei (Raukawa Settlement Trust, 2012);

Whakatairangatia, whakarewahia te whakarauoratanga reo i te hāpori

Whakatinanatia he kaupapa hou kia arotake te kōrero whānui i te reo

Taunakihia, whakawhanakehia te akoranga me he tirohanga Raukawa

5.2.1(i) Mātauranga

Kua aro pū te Taiwhanga Mātauranga ki te whanaketanga o te reo Māori. Kua paiheretia e Raukawa te tukunga o te Rautaki Mātauranga o Raukawa. Ko ngā momo aronga he rite tonu ki ngā whāinga o te Rautaki Reo o Raukawa, 'Whakareia te Kakara o te Hinu Raukawa' (Raukawa Trust Board, 2006). Koinei ōna whāinga;

Whakapā atu ki ngā kaupapa mātauranga ki te kōkiri i te mātauranga o Raukawa

Whakawhanake tonutia te rautaki mātauranga o Raukawa

5.2.1(k) Ratonga Rangatōpū

Ko te tino mahi a te Ratonga Rangatōpū he whakarato, he tautoko i ngā āhuatanga whakahaere, me ngā āhuatanga pūtea o te mana whakahaere o Raukawa. Koinei ōna whāinga (Raukawa Settlement Trust, 2012);

Arotakengia, mātaihia te tūnga-ā-pūtea mō ngā hua whai rawa

Ko te whāinga pūmanawa tangata, kia tū ake te Ratonga Rangatōpū hei kōwhiringa rangatira tuatahi mō te rohe o Raukawa

Whakarite he pūnaha whakahaere kaitā e whai whakahaerenga kaupapa, whakahaerenga tikanga anō hoki

Ko te whāinga hangarau whakaaturanga, kia tātaki te Ratonga Rangatōpū i te tukunga whai rawa o tā rātou ratonga, kia whakanui hoki i ngā whakahaerenga o ngā pakihī

5.2.1(m) Kaitaunaki Taiohi

Ko te mahi matua a te Ratonga Taunaki Taiohi kia “hikina te rangi wairua me te pitomata o ngā taiohi” (Raukawa Settlement Trust, 2012, p. 22). Ka pēnei o rātou whāinga;

Whakaheke i te hunga kāre e haere ki te kura

Whakaheke i te rahi o ngā taiohi hara

Whakaheke i te kai tarutaru me te waipiro

Whakatupu i te whakaurunga o ngā taiohi ki te mātauranga me te taiwhanga mahi

5.2.1(n) Taunaha Tiriti

Ko te mātāpono nui e whakahaere ana i ngā Taunaha Tiriti kia “whakahōnoretia ō tātou tūpuna, hangaia he ao mō ngā tamariki mokopuna” (Raukawa Settlement Trust, 2012, p. 24). Ka whakatutuki rātou i tēnei whakataukī mā runga i ēnei tohu nui;

Hainatia ngā whakataunga kerēme o Raukawa

Whakatutuki i ngā āhuatanga kerēme whakakikorua o te Karauna me ngā iwi inaki

Kōkiri i ngā whakaritenga Manawhenua Puku O Te Ika me ngā Whakaaetanga Porohanga Karauna

5.2.2 Atu i te Mana Whakahaere

He mate tō te pūmautanga o te ture i te hanganga mana whakahaere i runga i te tikanga me whai rēhita ki te rārangi i te hapū me ngā marae. Kua hua ake i ngā whakaputunga o Raukawa: toru tekau mā rima ngā marae kua rēhita i raro i te maru o te mana whakahaere (Raukawa Charitable Trust, 2011). Ina taua āhuatanga Māori, he whakaaro anō tō tērā whānau, he whakaaro anō tō tērā hapū, ā, he ahunga tō ia e whāia ana. Kei whakangū te mana whakahaere i ngā reo nā runga noa i ana tohutohu me ana kauapapa maruāpō. Ko te ngako o te rerenga nei e kīia ana, me whai whakaaro ki ngā tirohanga kei tua atu i tērā kua whakaturehia e te Kāwanatanga engari ko te pātai nui, me pēwhea e whakakaputa ēnei whakaaro katoa?

Atu i ngā kaupapa whakarauora o te mana whakahaere o Raukawa, ka titiro ake ki ngā kaupapa o ngā ringaringa raupā. E mea ana a Lewis (2007), haere ake nei, ka hao ngā mahi whakarauora reo o

Whakamārama marae¹⁵ i te kounga o te rautaki e arohatia nei e ngā whānau me ngā hapū (p. i). Ko te rautaki nei te whakatinanatanga o ngā tirohanga me ngā whakaaro o ngā whānau o te marae nei, e kīia ana te wawata matua: hei te tau 2100, he kaikōrero Māori, he kaikōrero reorua ngā tamariki mokopuna a ngā tamariki mokopuna o tēnei reanga (Whakamārama Reo Committee, 2007, p. 17). Nā reira ka taea te kite he hiahia kei tua i ngā whakapaparanga o te mana whakahaere, ā, ko te Kōmiti Reo o Whakamārama e taki ana i ngā wawata o te hapū.

Ahakoia he kaupapa tēnei e hāpaitia nei e te mana whakahaere, me mataara te iwi kei horo ngā momo kaupapa nei a te iti me te rahi. Kia hakune ki te hanganga makere o te mana whakahaere i waihangatia e te ture kāwanatanga. Heoi anō, nō whea hoki ēnei waihangatanga i puea ake?

5.3 NGĀ TAERO O TE AO HURIHURI

Kua huri te kei o te waka mai i te wā o te kāwanatanga taipūwhenua. Rerehu ai tōna kōriporipo i te mātotoru o ana kaupapa pērā i te kōti whenua. Ko te mea mīharo, kua totohu te nuinga o ēnei kaupapa taipūwhenua, ā, kua ū mai te pitomata ki uta. E maoa haere ana ngā whakahaerenga o te mana whakahaere o Raukawa ki te whakatutuki i ngā wawata o ngā tūpuna, otirā ngā wawata o te iwi whānui. Kua kōrero kētia te tūāpapa o ngā āhukatanga o nāianei, nō reira me anga atu te titiro ki ngā whakaawenga me ngā āhukatanga o āpōpō.

5.3.1 Kia Mahara, Kia Mau

Kua ahatia ngā tikanga o tuawhakarere? Kua ahatia ngā āhukatanga i nōhia nei ngā tūpuna? Ka whakahau a Carter (2003): the term, traditional, merely indicates that the basic values and beliefs and how such societies

¹⁵ Ko Whakamārama tētehi o ngā marae o Raukawa i te rohe o Wharepūhanga.

obtain and utilise knowledge originates from past generations. The knowledge base for tradition-based Māori societies is contained in whakapapa (p. 5). Kua whakahāngai kē a Raukawa i āna whakahaerenga ki ngā tikanga hou o te wā; ko ngā ture, ko ngā mana, ko te reo, ko te āhua e whakahaere ai te iwi i a ia anō kua tika tonu atu ki tā te kāwanatanga i kī ai. Kua whakapakahitia te mana whakahaere kia rite ai tōna hanganga mō ngā hua o ngā taunaha Tiriti. Tē mōhio pēnā he hua, he mate rānei te whakatau nei.

Ehara i te mea kei Aotearoa noa iho te ngau waerea e hokihoki mai ana ngā take mō te tūturutanga o ngā iwi taketake pērā i a ngāi Māori. He take mānukanuka mō ngā iwi taketake kua whakataipūwhenuatia, huri noa i te ao.¹⁶ Ko te mate, he rerekē ngā tuakiri iwi taketake ki ngā whakaritenga tauīwi kua tāmia ki runga i a rātou pēnā i ngā hanganga mana whakahaere, heoi kei te anga whakamua tonu a Raukawa ki te whakapiki i te mauri me te ora o te iwi mā te reo, te mātauranga, ngā ratonga hauora me ngā mahi i waenga i te hapori nā reira e rewa ake ana he hua.

5.4 NGĀ TAKE TIRITI

Nō te putanga o te Treaty of Waitangi Act 1975, ka tīmata te kāwanatanga ki te aromatawai i ngā take Tiriti, ko tōna pūtake i whakapuakina pēnei;

An Act to provide for the observance, and confirmation, of the principles of the Treaty of Waitangi by establishing a Tribunal to make recommendations on claims relating to the practical application of the Treaty and to determine whether certain matters are inconsistent with the principles of the Treaty (Treaty of Waitangi Act 1975).

¹⁶ Hei tauira, ka kapohia te Native Title Act 1993 (Ahitereiria); Indian Arts and Crafts Act 1990 (U.S.). Koia kua whakataki ngā ture kāwanatanga nei i te mana o te iwi taketake ki te whakatau pēnā he tūturutanga tō te tangata ki te whakatairanga i tōna ake ahurea (Sissons, 2004, pp. 19-31).

Ko ngā take Tiriti tētehi kaupapa nui i te whare kōrero o te whanaketanga, koia rā te kaupapa nui whakahirahira rawa atu mō ngā iwi me ngā hapū i tēnei rautau (T. Turia, personal communication, May 15, 2013). Ka haere tonu ngā whakaawenga o te taiwhanga nei i roto i ngā tau me ngā whakatupuranga ka heke mai. Heoi anō, me ruku ki tōna orokohanganga kia mārama pai ki ōna kōkiritanga.

5.4.1 Ngā Taunaha

I hainatia te Tiriti o Waitangi i te tau 1840.¹⁷ Ko ngā whakamau a te Māori he mea i takea mai i ngā hē o te Karauna ki te ū ki ngā kī taurangi i whakatakotoria i te Tiriti o Waitangi – koinei te tūāpapa mō ngā taunaha Tiriti o ngā iwi o te motu me te Karauna. I hainatia te Tiriti i runga i te whakapono, he whakahoahoa tō rātou hononga ki te Kuini o Ingarangi, ā, i whakamana te Tiriti o Waitangi i tēnei whakahoahoa. I te tau 1878, ka tāngia tā Remo Pahi reta tautoko i te waiaro Māori mō te hononga whakahoahoa o te Tiriti. Ka whakahau a Pahi, i raro i te maru o te Tiriti, he ōrite te mana o te Kuini me te mana Māori (Waymouth, 2002, p. 160).

Kia peka mai ki te ao hurihuri, tērā te uira e whawhati mai. Ki tā te Waitangi Tribunal (2012);

Treaty Claims are complaints that the Crown has breached the Treaty of Waitangi by particular actions, inactions, laws, or policies [...] and that Māori have suffered prejudice (harmful effects) as a result. Claims need to be comprehensive - that is, cover all the matters at issue between the claimants and the Crown - and they need to be proven - that is, supported by evidence of a standard that the Tribunal will find convincing.

¹⁷ Ko te wāhanga tuatahi, i tuku i te mana kāwanatanga ki te Kuini o Ingarangi. Ko te wāhanga tuarua o te Tiriti, ka whakaoati kia noho te tino rangatiratanga o te whenua, ngā kāinga me ngā taonga katoa ki roto i te ringa o ngāi Māori. Ā, ko te wāhanga tuatoru i whakaputa, ka tiakina e te Kuini o Ingarangi ngā tāngata Māori katoa o Niu Tireni – ka tukua ki a rātou ngā tikanga katoa rite tahi ki ngā tāngata o Ingarangi.

He pērā te wairua o ngā whakahaerenga o te rōpū nei ki ngā hē o ngā rautau kua taha ake. Kei roto i ēnei whakahaerenga, e āki ana te ture o te kāwanatanga i te hanga me te āhua o ngā mātauranga e katohia ana mō ngā taunaha Tiriti.

5.5 TE TURE

Ka hoki ngā kōrero ki te taenga mai o tauwiwi me ngā ture whakapeau i te ao Māori. He kōrero, he whakapapa, he wānanga anō tō ngā ture taipūwhenua heoi anō, ka meatia noa iho ētehi o ērā ture hei rau mahara ki te huarahi o ngā take Tiriti i te horopaki o te whanaketanga. Ko te waimeha tētehi o ngā tino aronga mō ngā ture me ngā mahi taipūwhenua pērā i te Tohunga Suppression Act 1907 (Hill, 1995, p. 137). Heoi anō, he whakamāramatanga anō ā Binney, Chaplin, & Wallace (1979), Webster (1979), Lange (1999) rātou ko Voyce (1989), mō te kawenga whakahaumanu me te āwangawanga ki te paparewatanga o te oranga o te Māori i te koki o te rautau rua tekau. Hei tā Voyce (1989), ko ngā mōrearea o te poropiti Rua Kenana he take anō mō te kōkiritanga o te ture nei (pp. 109-110). Waihoki, he tauira tēnei mō te whānui me te whāroa o ngā whakaaro me ngā waiaro e rere noa ana i te taiwhanga nei.

Ka tīkina tō Benton (1997) whakahau mō ngā take e pā ana ki te reo Māori, “tokenism in Māori language matters has often created an impressive façade of progress masking a retrogressive reality” (p. 30). Ki te whakapono ki tā Benton i kī ai, kua piri tonu te taikaha o ngā mātauranga Karauna kia turakina ngā tikanga Māori, ā, ko te ture he huarahi whakataki i ō rātou ake hiahia. Hei tauaronga ki tō Benton whakaaro, ki te titiro ki ngā ture whai pānga ki a Raukawa me ngā iwi huri noa i te motu, he waiaro anō e whakaatu ana i te whakaaetanga o te kāwanatanga ki te whakamana i ngā mahi a te iwi, pēnā ka whai i ngā ritenga kua whakaturehia. E whai mai nei ētehi ture kua whakatō i te mana ki te whakanui i ngā tikanga me ngā whakahaerenga o ngā iwi.

5.5.1 He Hononga Whai Niho

I ēnei wā, kua whai niho ngā iwi o te motu ki te whakarite, ki te whakaae ki ngā whakatau a te kāwanatanga. E āhei ana rātou ki te whakakaha i te mana o ngā iwi i ngā whakahaerenga o te motu. Koia ka whai ake he kōwhiringa ture e whai pānga ki ngā take o te kōrero whakapae nei. Ka whakarehu i te ture Ngāti Tūwharetoa, Raukawa, and Te Arawa River Iwi Waikato River Act 2010 – ka whakarite tēnei ture i te kāhui iwi o Ngāti Tūwharetoa, Raukawa, me Te Arawa ki te tiaki i te awa o Waikato. Ko tōna kaupapa, he whakarauora, he whakahaumaru i te awa mō ngā reanga e heke mai ana (Ngati Tuwharetoa, Raukawa, and Te Arawa River Iwi Waikato River Act 2010). Mā te ture nei e whakakaha te ākinga o ēnei iwi ki te tiaki i te awa tupua, ki tāna anō i hiahiaitia ai.

Kei taua moka whakaaro anō te Resource Management Act 1991, koia pea te whatinga tuatahi o ngā ngaru pēnā i te ture mō te kāhui iwi i runga ake. Ko te ture nei he huarahi anō mō ngā iwi me ngā hāpori o te motu kia whai wāhi i ngā kōrero me ngā whakatau mō te taiao, ā, mā reira e mumura ai ngā niho o ngā iwi. Ina Te Ture Whenua Maori Act 1993, ka kitea he paku rerekētanga i tō runga ake nei. E whakaū ana te ture mō te whenua Māori i ngā mātāpono o te Tiriti o Waitangi; he mea whakanui i te wairua o te Tiriti, ā, e tōmina ana ki te whakahaumako i te pitomata ohanga o ngā whenua Māori, kia whakamarumaru hoki i tōna mana mō ngā whakatupuranga o āpōpō (Te Ture Whenua Maori Act 1993).

5.5.2 Kāwanatanga Rohe

Kia heke iho mai ki te taumata o te kāwanatanga rohe, arā ki te kaunihera-ā-rohe. E whāia ana e ngā kaunihera-ā-rohe ngā kaupapa mahi ngātahi me ngā iwi o ō rātou takiwā. Hei tauira, ko te South Waikato District Plan 2012, he whakaaetanga kua whakaputu ki te whakaata i ngā

whakatakinga o te Resource Management Act e kī ana kia mahi tahi ngā kaunihera-ā-rohe me te tangata whenua, waihoki kia whai whakaaro ki ngā tikanga Māori (Resource Management Act 1991; tirohia hoki te Local Government Act 2002). Ko ngā wāhanga mō te wāhi ki te tangata whenua he hanganga pūtiotio mō ngā waihotanga mōrearea o te waimeha. I te taumata e noho nei te whare miere, he nui ngā āhuatanga ture e haere ake ana, heoi anō, kei te pūtake o te maunga ko ngā kaunihera-ā-rohe e whakapiki atu ki ngā whakatakinga o ngā ture o te motu.

5.6 HE WHAKATEPE

Kua kato tēnei upoko i ngā whakapaparanga whanaketanga nō te taenga mai o ngāi Māori ki Aotearoa me te taenga mai o tauwiwi anō hoki. Kua tohua ngā kaupapa whanake o te hauora, te mātauranga, me te pāpori mō te pānga ki ngā mahi whakahaumanu i ngā iwi o te motu. Koia kua whakarārangi i ngā kaupapa whanake o te mana whakahaere o Raukawa kia whakakaha i ngā kaupapa e toru nei huri noa i te rohe. Kātahi rā te whakatauritenga i te kaupapa whakarauora reo o te marae o Whakamārama. Ahakoa ēnei hua, kei kō tonu ngā whakaawenga o waho i ngā kaupapa o Raukawa pēnei i te ture, te Kāwanatanga, me ngā āhuatanga waimeha e tāmi ana i ngā mahi. Kua whakaatu i ngā wero o te ao hurihuri nei, ko ngā take Tiriti me ngā hanganga ture e whakaterere ana i te nuinga o ngā āhuatanga tōrangapū o te rohe me te motu huri noa. Ko ngā uri o te waimeha e whakaawe ana i ngā tikanga tuku iho mā te tahuri o te ao Māori ki ao kē.

6.0 HE WETEWETE

6.1 HE WHAKATAKINGA

I tēnei upoko, ka wetewete, ka whakatau i ngā rerekētanga me ngā ritenga o tuawhakarere me te ao hurihuri. Kei ngā arenga o te upoko nei te tūhononga o ngā kōrero mō te mana whenua, te mana tangata, me ōna pānga ki te whanaketanga o Raukawa i ēnei rā. Kua rerekē rawa atu ngā āhuatanga o te ao i nōhia ai e ngā tūpuna. I ia whakatupuranga, kua rerekē haere ngā tikanga whakamau i ngā pae whenua, ā, kua tīni hoki te hanga o te iwi. Kua nuku ngā whakahaerenga mai i te marae o Tū, ki ngā Kōti. Kua riro te koikoi me te patu i te pene me te ture. Heoi, ahakoa ngā rerekētanga, e ū tonu ana te wairua me ngā mātāpono ake nō onamata.

6.2 TE WĀHI O TE WHAKAPAPA

Nō ngā wā o mua, he pānga nui tō te whakapapa ki ngā tikanga o te mana whenua. Ka tātaki ngā tikanga whakapapa me ngā mātāpono whakapapa i ngā nekenekehanga o tuawhakarere. Kia hoki te aroaro ki te whenua i wāwāhi ai a Tāwhao mō Tūrongo me Whatihua. Ko te whenua rā i tapatapa ki a Tūrongo, koia te tūāpapa i kōkiri i te iwi o Raukawa. Nā reira ko te whakapapa te take matua he rohe tō Raukawa i tēnei rā, ā, ko te whakapapa tētehi o ngā take nui i mau ai i a Raukawa ana rohenga whenua tawhito. Mā te whenua e ora ai te iwi. Ko ngā tātai whakapapa, ngā iaia toto e whakapakari ai ngā tātai hono. Nā te pakari o ngā pou whakapapa, kāre te iwi i tapepa rawa iho ki ngā pēhitanga o te ao hurihuri.

Kua noho motuhake tonu te whakapapa i te tirohanga Māori. Kua whakauenuku ngā aronga whakaaro ki ngā mātāpono i takea mai i te whakapapa. Ka whakapae a Reed (2003), ko te mea nui o te whakapapa he whakarite, he whakataki i ngā honohononga (p. 28), ā, he tikanga tēnei kua whakatōkia ki te kōrero whakapae nei. Ka taea te kī he hanganga ture nō te ao kōwhatu, ā, e hāngai tonu ana ia mohoa noa nei, kua ruiruia

pūmautia te whakapapa me ōna tikanga i tēnei kōrero whakapae. Mā te whai i ngā mātāpono o te whakapapa, kua whakatōkia ngā kupu tohutohu me ngā mātāpono i kawē i ngā tikanga o tuawhakarere. Koirā i whakatūāpapatia ai ki tēnei kōrero whakapae te mātotoru o ngā tātai whakapapa o Tainui, heke iho ki a Hoturoa, ki a Tāwhao, otirā ki a Raukawa me āna uri.

Nā reira, ahakoa ngā rerekētanga o te ao hurihuri, ka taea te kite he wāhi tō te whakapapa ki ngā āhuatanga katoa o te ao Māori me te ao auraki. Kua mau i te iwi ōna pae whenua tawhito ahakoa ngā pakanga i waenga iwi me ngā hapū, whai muri ake i ngā tautohetohe, ā, i tua atu hoki i ngā whakahaerenga waimeha o te kāwanatanga. E whakapono ana, ko te pakari o ngā tātai whakapapa tētehi o ngā tino take i noho pakari ai te iwi i ngā tai mākinakina o ngā rautau kua hipa. Mei kore te whakapapa, ka ngaro te iwi, ka riro te whenua ki whea kē atu.

6.3 MANA WHENUA, MANA TANGATA

Nā te ū ki ngā tikanga me te pupuru ki ngā kōrero tuku iho a te iwi, ka ora tonu te mana whenua me te mana tangata i whakakaha ai i te whakamautanga a Raukawa ki ana pae whenua tawhito. Pēnā ka noho pūmau te tikanga i ngā whakahaerenga hou o te taiao me ngā take mana whenua, ka momoho te whenua o te iwi. Pēnā ka whakatairanga i ngā kōrero tuku iho, ka ora hoki ēnei mātauranga hei kai mā te iwi. Ahakoa te rerekē o te hanga o te iwi, ko te oranga o te whenua me te tangata ētehi kaupapa nui i ngā kaupapa me ngā whāinga o te mana whakahaere o Raukawa.

He maha ngā hua kua rewa ake i te hītori taipūwhenua o Aotearoa. He kaupapa nui ngā whakawehewehetanga o te kāwanatanga i te iwi me te whenua. Ko ngā whakataunga me ngā hokohoko whenua o te rautau

tekau mā iwa he tohu nui mō ngā āhuatanga waimeha i kōkiri ki te pēhi i ngā tikanga o te ao Māori. Ko te waihangatanga o ngā ture me ngā tikanga taipūwhenua he āhuatanga whakahemo i te ao taketake (Smith, 1999, p. 85; Mutu, 2005, p. 146). Ka ranu ngā tirohanga taketake me ngā tirohanga tauīwi, ā, i te ngarohanga o ngā tikanga taketake, ka ngaro te tūturutanga o te iwi (Denzin & Lincoln, 2005). Kua kōrerohia ngā pēhitanga o Palestine me te kāwhaki o te whenua i te iwi taketake; kua whakapuakina te rironga o te tino rangatiratanga, te whenua me te tuakiri o te iwi. Ahakoa te tawhiti me te rerekē o tēnei motu me tērā motu, he tino ritenga tō ēnei take i ia taiwhanga.

Kua waihanga a Raukawa i tana mana whakahaere kia rite tōna āhua me ōna tikanga mō te tukunga mai o ngā rawa o ngā taunaha Tiriti. I runga i te whakapakihitanga o te iwi, kua tahuri atu te hanga o te iwi ki tērā i mōhio kētia e ngā tūpuna. He wero tēnei nō te ao hurihuri, ko te whakawhirinakitanga o Raukawa ki ngā whakaritenga me ngā whakaaetanga tauīwi. Ko te tūmanako e kore e waiwai te ahurea, ngā tikanga, ngā tirohanga, me te tuakiri e kīia ai ko Raukawa te iwi e ngunguru nei. I runga i te mana o ōna kaupapa whanake, kua whānui haere ngā pūkenga o Raukawa kia tū pakari i te ao ohanga, te ao tōrangapū, i waenganui hoki i te hāpori, nā reira kei roto i a Raukawa te āheitanga ki te whakawhanake haere i ngā kaupapa whakaū i te whenua me te iwi.

6.4 NGĀ HUA ME NGĀ MATE

Ko te ahunga o ngā iwi Māori ki te whakatau i ngā taunaha Tiriti, he mea whakaawe i ngā tikanga taketake o te iwi. E whakahāngai ana ngā iwi i a rātou anō kia rite ngā whakahaerenga mō ngā kawa me ngā tikanga o te kāwanatanga. Ko te mate o te whakaritenga nei, e kaha tīni nei te kāwanatanga i ngā whakaritenga taketake. Ahakoa te nui, te iti rānei o te whakarerekētanga, he mea takahi tonu i te mana i takea nō tuawhakarere,

ā, kei papahoro ngā waitohu o tērā iwi, o tērā hapū, o tērā whānau. Kia mate ngā waitohu motuhake, ka ara mai he ohu kano kua kōmitimitia ki te hapori whānui o te motu taipūwhenua o Niu Tirenī. Hei tauira, kua rawea te Māori e te kāwanatanga me āna whakahaerenga mārō mō ngā taunaha Tiriti, ā, kei te puku o te Treaty of Waitangi Act 1973 e mea ana, e kore a muri e hokia (Treaty of Waitangi 1973, sec 6AA). Waihoki, tērā te whakatau kia tutuki ngā taunaha Tiriti katoa o te motu ā te tau 2014 (Byrnes, 2009). He whakaritenga tauīwi ēnei i ahu mai i ngā tirohanga me ngā whakaaro tauīwi. He pēhitanga nā te kāwanatanga i utaina ki runga i te Māori kia rerehu ngā tikanga taketake, kia hou te Māori kia koropiko ki tikanga kē.

He wero tō te whakapokapūtanga o te mana whakahaere i ngā mahi a te iwi. Ka horo te mana o ngā peka whānau me ngā peka hapū i roto i ō rātou ake whaitua. Ka whakaputa a Belich (2001) he mate anō i roto i te whakaaro he hanganga kotahi te iwi, hangore ana ngā kāwai whakaheke, ā, he ahi whakahiato wahie kē te hanga whakaaro nei (p. 360). Ko te rēhita iwi he kauwhau whakapokapū i te iwi, ka riro te tikanga me te rangatiratanga ki ngā māngai pōti. Ahakoa ngā hui-ā-iwi, ka taea tonu e te iwi me ngā māngai kāwanatanga, pērā i te Rōpū Whakamana i te Tiriti o Waitangi, te whakatau take hāunga ngā whakahau a ngā uri.

Ko te ture te mātāpuna o te hanganga mana whakahaere o Raukawa. Kua whakahāngai a Raukawa i a ia anō me ana kōrero tuku iho kia whai i ngā mātāpono me ngā whakaritenga taunaha Tiriti o te kāwanatanga. I te whakataunga o ia kokoraho Tiriti puta noa i te motu, ka whakariterite te kāwanatanga i te hanganga pāpori o ngā iwi nā te whakarōpūtanga i te hopunga kotahi. Kāre he pānga ō tēnei whakaaro whāiti ki ngā tikanga matatini i kawē i te ao o ngā tūpuna i ngā wā o mua. Kua makere te pūmanawa i kōkiri i te hihiko ki te whakawhiti i te Moana-nui-a-Kiwa, ki te whakatau whenua hou, ki te whakatina pae whenua, ki te whakaū rānei i te tuakiri o te iwi.

6.5 TE ARA KEI MUA

Kua eke tātou ki te ira whakakoero. Me whakarewa e Raukawa he whakahaerenga hou kia whai mana ngā uri katoa i te ahurewa whakaritenga o te mana whakahaere. Pēnā ka ū ki ngā tikanga me ngā mātāpono o mua, pērā i te whakapapa, waihoki pēnā ka tango i ngā hanganga o te ao Pākehā e whakaawe nei i te Māori, ka whai hua te Māori i te ao hurihuri. Hei tā Mead (2003), he hua o roto o te whakapā atu ki ngā mātāpono o ngā tikanga nō tuawhakarere (pp. 335-350).

Mohoa noa nei, he taura pai te ture kāhui iwi o Te Arawa, Raukawa me Ngāti Tūwharetoa. Ko te awa te hononga, he kawenga kotahi tō rātou ki te whakahaumarū, ki te tiaki i te awa tupua (Ngāti Tuwharetoa, Raukawa, and Te Arawa River Iwi Waikato River Act 2010). Heoi anō kāre e hiahia kia noho te ture hei kaitātaki mō ngā kaupapa kairangi pēnā i te kaupapa kua tāia ki te ture nei.

6.5.1 He Whakahakune

Ahakoā te aha, me noho tahi te mana whakahaere me te kāwanatanga i te nuinga o ngā whakaritenga o te wā. Ka ahu mai tēnei whakaritenga i te hanganga mana whakahaere i tohua hei māngai mō te iwi. Koinei hoki te ara e whanake ai ngā kaupapa whakarauora i te iwi. Mā ngā taunaha Tiriti e toa ai a Raukawa i te ao ohanga ki te whakatupu pūtea engari me whai whakaaro a Raukawa ki te whānuitanga o te ahurea, kia kua ngā whāinga ohanga e horo i ngā pūmanawa me ngā tikanga i whakakaha i te iwi ahakoā ngā piki me ngā heke.

Ko te kura e pīata mai ana, ka taea te whakariporipo te kare o te wai kia hīnātore mai ngā mōhiōhio me ngā akoranga o ngā wā o mua. Ka taea e

ia whakatupuranga te whakawhānui ake ōna āheitanga i tua atu i tō te whakatupuranga o mua āheitanga. Kei te ahu atu a Raukawa ki te whakakotahitanga o ngā akoranga o nanahi me ngā akoranga o nāianeī. Ko te whakahau kia whiriwhiri tika tēnei whakatupuranga ko ēwhea āhuetanga ka pupuru, ko ēwhea āhuetanga ka makere, ko ēwhea āhuetanga ka whakahāngai ki te ao hikohiko.

6.6 HE WHAKATEPE

Kua wānanga, kua wetewete i ngā porohanga o te kōrero whakapae. Ko te whakahau matua, he wāhanga nui te whakapapa mō te pupurutanga a Raukawa ki ana pae whenua tawhito. Ā, koia i pakari ai te iwi ki te noho pūmau i te Puku o te Ika mō e whia whakatupuranga, haere ake nei. E whakapono ana, ka taea te whakawhiti ngā mātāpono i whakaawe i te ao o ngā tūpuna i te mea, kei roto te whakapapa i ngā ariā katoa pērā i te tikanga, te ahurea, ngā mātāpono, me ngā tirohanga o te ao Māori. Ko te tūāpapa ko te whakapapa, ā, mā konā whakapuaki mai ai ngā āhuetanga katoa. Heoi anō te hiringa o te Māori, kei reira hoki ngā āhuetanga mahue i aru i te iwi Māori i te whakataipūwhenuatanga o te iwi. Nā ngā pōkaikaha i hura ai te māia o ngā iwi Māori, ā, ko ngā kaupapa whanake o Raukawa ka para i te huarahi ki te whakapiki i ngā takarepa o te hapori whānui o te motu.

7.0 HEI WHAKAKAPINGA AKE

7.1 HE WHAKATAKINGA

Hei whakamahuki, ka hoki whakamuri ki te puku o ngā upoko kia houhia ngā kiko o roto. Kātahi ka whakakapi te upoko nei i ngā whāinga o te kōrero whakapae. Whai muri ake, ka whakapuaki ngā whāititanga o ngā mahi rangahau me te aronga rangahau mō āpōpō. Kokopi katoa te iho kōrero i konei.

7.2 NGĀ KAUPAPA I WHITIA

Kua whakatōkia ngā kōrero mō te iwi o Raukawa i ngā māra whakapapa o Tainui. E mōhio mai nei ko wai a Raukawa, ā, i haere mai i whea. Kia whakawhānui ake i te orokohanganga mai o Raukawa, kua whakarārangi i ngā whakapaparanga o te tuakiri o te iwi. Ko ngā herenga ērā ki te whenua, he mea titi ki te ngākau o te iwi me ngā rahinga o te mahara. Mei kore te rohe me te whenua, kua kore hoki te iwi. Ahakoa ngā rironga whenua ki ngā kaupapa taipūwhenua me ngā ariā o ngā mahi hokohoko, kua tau ngā kōrero tuku iho hei punga mō te iwi.

Ko ngā ara i ū tonu ai ēnei kaupapa, ko te whatu i ngā tātai hono ki waenga hapū, ki waenga Raukawa, ki waenga iwi kē atu anō hoki. Ko te whakatutukitanga o ngā tikanga mana whenua, me te pupurutanga o ngā kōrero tuku iho me ngā mātauranga – koinei ngā āhuatanga kua whakaawe i a Raukawa mai rā anō. I tua i ngā kaupapa hauora, mātauranga, me ngā take pāpori, kei te anga whakamua te mana whakahaere o Raukawa ki te whakaterere i te moana tāpokopoko a waimeha, a Tiriti, a ture anō hoki. Mā te tau o ngā poupuu whakapapa puta noa i ngā whakatupuranga, kua tū pakari ngā kaupapa whanake o Raukawa i ēnei rā, haere ake nei.

Heoi anō ngā kupu tohutohu hei tirohanga ki te ao i noho nei ō tātou tūpuna, kua tohua he ara hei takahi mō ngā wā kei te heke mai. Ka hāngai te tirohanga nei ki te whakarewatanga ake o ngā tikanga me ngā mātāpono i whakaawe i ngā tūpuna i ngā wā o mua. E ahu pēnei ana ngā whakaaro i te mea, I āhei ngā tūpuna ki te whakawhiti i te Moana-nui-a-Kiwa ki te whakanoho i te motu hou nei, ā he pērā rawa te honohononga ki ēnei wā.

7.3 HE URUPARE

Ko te whāinga tuatahi o te mahi rangahau he titiro ki ngā wā o mua me ngā mahi a ngā tūpuna ki te whakamau i ngā pae whenua tawhito o Raukawa, ko te whakapapa, ko ngā tātai hono, ko ngā pakanga anō hoki he ara i takahia kia pūmau ki te whenua tupu. Ko te whāinga tuarua o te mahi rangahau he whakaputa i ngā pānga ki te whanaketanga o Raukawa i ēnei rā. E rua ngā ao e whakaawe nei i te iwi o Raukawa – ko tētehi rangi ko ngā tikanga me ngā āhuatanga kua heke mai i ngā tūpuna, ko tērā atu rangi, ko ngā whakaritenga o te kāwanatanga kua purea nei i ngā rautau kua taha ake. Waihoki ka aru ngā rangi nei i te hanga o te mana whakahaere, otirā te iwi.

Ka whiti atu ngā kōrero o te iwi o Raukawa ki tua i te hekenga mai o Tainui waka ki Aotearoa nei engari kua tīkaro noa i ētehi wāhanga o ēnā kōrero ki te whakatutuki i te whāinga o te kōrero whakapae nei: i mau pēwhea nei i a Raukawa āna pae whenua tawhito, ā, he aha hoki ngā pānga ki te whanaketanga o Raukawa i ēnei rā, haere ake nei? Mārakerake te kite nā te pupuru o Raukawa ki te whenua, me tana tāwhai atu ki ngā whenua huri noa i tana rohe, i mau i a ia āna pae whenua tawhito. I roto anō i te huinga kupu o ngā take Tiriti, ko te take raupatu, te take tūpuna, te take tapatapa, me te take ahikāroa (Waitangi Tribunal, 1993; Waitangi Tribunal, 2004; White & Ladley, 2005; Boast, 2009; Te Hiko, 2010).

7.4 NGĀ WHĀITITANGA

He mahi uaua te kōwhiriwhiri ko ēwhea kōrero hei whakauru atu ki te kōrero whakapae nei, ā, nā te haumako o ngā kōrero, he tino uaua te waiho i ētehi o ngā kōrero a te iwi. Heoi anō kua hāngai ngā whakaaro ki te waiaro, ko te kōrero whakapae nei, he rau e iri ana i ngā peka maha o te rākau nui – me kī, te rākau pupuru kōrero o Raukawa.

Nō te koki o te kōrero whakapae, kua tau te mōhio, he whānui te ao rangahau i ngā kōrero tuku iho, otirā te ao rangahau i te iwi. I roto i te kōrero whakapae nei, kāre te pāpakutanga o ngā kawa whare wānanga i hāpai ki te whakatutuki i ngā hōhonutanga o ngā kōrero me ngā mātauranga. Huhua noa ngā kōrero i mahue i te kairangahau i te tīkarotanga o ngā kōrero tuku iho e whai pānga ana ki te mahi rangahau nei.

I te kōkiritanga o te kōrero whakapae nei, ka hāngai te aro ki ngā whakatutukitanga ka hua mai i ngā kokoraho Tiriti. I te mutunga o ngā mahi rangahau, kua ako kē ahau, he maha ngā hua i tua atu i te taiwhanga kokoraho Tiriti, ā, he nui noa atu ngā hua hei rangahau māku kia tika te wā. Ka taea e te hanganga me ngā kōrero o tētehi hapū te whakakī te kōrero whakapae kotahi. He mahi kaitā i runga noa i te whakawetewete i ngā kōrero tuku iho. Ko te māramatanga nui, he pānga tō ia whakatupuranga ki te whanaketanga o te iwi, ahakoa ā-pāpori, ā-ohanga, ā-tōrangapū rānei.

7.5 MŌ ĀPŌPŌ

E tautoko ana i te waiaro, ko ngā waihotanga kōrero, he whatitoka ki te ao i noho nei ō tātou tūpuna (Royal, 1993), ā, ko ngā kōrero tuku iho te waka e whakaheke ai ngā tikanga ki ia whakatupuranga. Kia mahara tāua ki

ngā hua me ngā mate kua rokohanga atu i te rautau tekau mā waru, tae noa ki ēnei wā. Kei roto i ngā pupurutanga o mahara ko ngā tohutohu e whakaata nei i te huarahi kei mua i a Raukawa, otirā i a tātou te iwi Māori. He maha ngā takiwā rangahau kua pāngia e te kōrero whakapae nei. Engari tē taea e te kōrero whakapae kotahi te whakatutuki te whānui me te whāroa o ngā kōrero katoa – he wā anō tōna kia ruku hōhonu atu ki te rētōtanga o ngā kōrero, otirā kia arotake he kaupapa rerekē hei tātaki i ngā whakatupuranga i te ao hurihuri e kaha tīni haere nei, e kaha whanake haere nei.

7.6 HE WHAKATEPE

Ko te whakahau, kia huaki ngā akoranga o roto i ngā kōrero me ngā mātauranga tuku iho kia taea ai e tātou te whakahāngai ngā kaupapa whanake e rite tonu atu ki te kounga o ngā tikanga i waihanga ngā tūpuna. Koinei te reanga whakaaro i urutau ai ngā tūpuna i te taiao hou nei o Aotearoa kia momoho, kia ora rawa atu. Pēnā ka tuku tātou ki te tono anō, ki te whakahohe anō te hanganga rapunga whakaaro nei, ka whakamaua te pae tawhiti kia tina. Engari me whai tonu taua māia ki tō tātou āheitanga ki te whakarite tikanga hou mō ngā āhuatanga o te ao hou nei. Heoi anō, ko te mea nui kia whakamau tonu te ito o te Raukawatanga, waihoki, te Māoritanga.

RĀRANGI WHAKAMĀRAMA

“Me mate te tangata, me mate mo te whenua” – *The warrior’s death is to die for the land*

“Whakahōnoretia ō tātou tūpuna, hangaia he ao mō ngā tamariki mokopuna” – *“Honour our tūpuna, build a future for the next generation”*

Ao akoranga – *academia*

Inaki – *overlapping*

Ine kounga - *qualitative*

Ine tātai - *quantitative*

Ira whakakoero – *boiling point*

Kaunihera-ā-rohe – *district council*

Kāwanatanga rohe – *local government*

Kī pono - *certify*

Kī taurangi – *guarantee*

Ko ‘Ngāti Raukawa (Waikato)’ he ingoa karanga nō Tatauranga Aotearoa mō te iwi o Raukawa e noho nei i te puku o te ika (Statistics New Zealand, 2006).

Kōmiti Matatika Tangata – *Human Ethics Committee*

Kotahitanga o Ngā Iwi o te Ao – *United Nations*

Manawhenua Puku O Te Ika – *Central North Island Manawhenua*

Matapakinga - *rhetoric, dialogue*

Pokapū Rāwhiti – *Middle East*

Ratonga Rangatōpū – *Corporate Services*

Taero – *bureaucracy, bureaucrat, bureaucratic*

Tapā – *to name (tapa, tapaina)*

Tatauranga Aotearoa – *Statistics New Zealand*

Te Rōpū Whakamana i te Tiriti – *the Waitangi Tribunal*

Waikato ki te Tonga – *South Waikato (he rohenga kaunihera-ā-rohe)*

Whakakikorua – *overlapping*

Whakamau – *grievance, fasten, fix, be established*

NGĀ WHAKAPUAKANGA

TAKETAKENGA MATUA

Appendices to the Journals of the House of Representatives

Major Mair. (1881). "Major Mair, Native Agent, R.M., Auckland, to the Under-Secretary, Native Department". *New Zealand Appendix to the Journals of the House of Representatives*, Vol. 2, F-H14.

[Unknown]. (1885). "Notes on the Maungatautari Case by the Chief Judge of the Native Land Court". *New Zealand Appendix to the Journals of the House of Representatives*, Vol. 2, F-H14.

Pukapuka Mēneti o te Kōti Whenua Māori

Aperahama Rangitutia. (1882). *Waotu block*. Waikato MB No. 8

Nikorima Rarowera. (1884). *III Manukatutahi Otautahanga block*. Waikato MB No. 12

Renau Te Wharepakaru & Mere Kauwhata. (1881). Otaki MB No. 5

[Multiple citations]. Waikato MB No. 26

Hitiri Te Paerata. (1890-1891). *Tauponuiatia West*. Taupo MB No. 4

Hoani Makaho. (1866). *Waipa block*. Waikato MB No. 1

Wiremu Haumu. (1879). *Okauia block*. Waikato MB No. 3

Wiremu Haumu. (1866). *Waipa block*. Waikato MB No. 1

Niupepa

Waikato - Native Land Courts. (1866, October 24). *Daily Southern Cross*, p. 5.

Golda Meir statement to The Sunday Times. (1969, June 15). *The Sunday Times*, [unknown page].

Native Lands Court. (1881, February, 19). *Waikato Times*, p. 2.

Native Land Courts, Cambridge. (1883, January 23). *Waikato Times*, p. 2.

Ture

Aotearoa

Ngati Tuwharetoa, Raukawa, and Te Arawa River Iwi Waikato River Act
2010

Resource Management Act 1991

Te Ture Whenua Maori Act 1993

Tāwāhi

Native Title Act 1993 (Ahitereiria)

Indian Arts and Crafts Act (U.S.)

TAKETAKENGA TUARUA

Kāre i Tā

Lewis, R. B. (2007). *A criterion referenced analysis and evaluation of the processes involved in formulating a Māori language regeneration strategy for Whakamārama marae*. (Unpublished master's thesis). University of Waikato, Hamilton, New Zealand.

Mead, L. (1996). *Ngā aho o te kakahu mātauranga: the multiple layers of struggle by Māori in education*. (Unpublished doctoral dissertation). University of Auckland, Auckland, New Zealand.

Kōrero Taunaki nō te Kōti

Joseph, R. (2010). 'Brief of Evidence of Dr Robert Joseph', in the matter of the Rohe Pōtae, 01/03/2010

Pae Tukutuku

Byrnes, G. (2009). The paradox of 'settlement': History and the modern Treaty claims process. Retrieved from <http://posttreatysettlements.org.nz/the-paradox-of-settlement/>

Waitangi Tribunal. (2012). Claims. Retrieved from <http://www.waitangi-tribunal.govt.nz/claims/>

Pukapuka

Ballara, A. (1998). *Iwi: the dynamics of Māori tribal organisation*. Wellington: Victoria University Press.

Ballara, A. (2003). *Taua : 'musket wars', 'land wars' or tikanga? Warfare in Māori society in the early nineteenth century*. Auckland: Penguin Books.

Barkan, E. & Rush, R. (2002). Claiming the stones, naming the bones – cultural property and the negotiation of national and ethnic identity. Los Angeles: Getty Research Institute.

Belgrave, M. (2005). *Historical frictions – Maori claims and reinvented histories*. Auckland: Auckland University Press.

- Belich, J. (2001). Myth, race and identity in New Zealand. In J. Binney (Ed.), *The shaping of history: essays from New Zealand journal of history* (pp. 356-366). Wellington: Bridget Williams Books.
- Benton, R. (1997). *The Māori language: dying or reviving?* Wellington: New Zealand Council for Educational Research.
- Binney, J., Chaplin, G., & Wallace, C. (1979). *Mihaia: the prophet Rua Kenana and his community at Maungapohatu*. Wellington: Oxford University Press.
- Bishop, R. (1996). *Whakawhanaungatanga-collaborative research stories*. Palmerston North: Dunmore Press Ltd.
- Bregman, A. (2002). *Israel's wars: a history since 1947*. Routledge: London.
- Byrnes, G. (2004). *The Waitangi Tribunal and New Zealand history*. Melbourne: Oxford University Press.
- Cowan, J. (1983). *The New Zealand wars: a history of the Maori campaigns and the pioneering period*. Wellington: Government Printer.
- Denzin, N. K. & Lincoln, Y. S. (2005). *The SAGE handbook of qualitative research*. Thousand Oaks, CA: Sage Publications.
- Denzin, N. K., Lincoln, Y. S. & Smith, L. T. (2008). *Handbook of critical and indigenous methodologies*. Thousand Oaks, CA: Sage Publications.
- Durie, M. (1998). *Te mana, te kawanatanga – the politics of Māori self-determination*. Auckland: Oxford University Press.
- Durie, M. (1996). *Characteristics of Māori health research*. Palmerston North: Massey University, Te Pūmanawa Hauora.

- Fowler, M. (1999). Judaism. In Fowler, J., Fowler, M., Norcliffe, D., Hill, N., & Watkins, D. *World religions: an introduction for students* (2nd ed.). Portland, Oregon: Sussex Academic Press.
- Freire, P. (1970). *Pedagogy of the oppressed*. New York: Herder & Herder.
- Grace, J. T. (1959). *Tuwharetoa: the history of the Maori people of the Taupo District*. Auckland: Reed Books.
- Guha, R. (1997). *Dominance without hegemony, history and power in colonial India*. England: Harvard University Press.
- Jones, P. T. (1960). *King Potatau, an account of the life of Potatau Te Wherowhero, the first Maori king*. Auckland: Polynesian Society.
- Jones, P. T. & Biggs, B. (1995). *Nga iwi o Tainui : the traditional history of the Tainui people : nga koorero tuku iho a nga tupuna*. Auckland: Auckland University Press.
- King, M. (Ed.) (1992). *Te ao hurihuri – aspects of Maoritanga*. Auckland: Reed Publishing Group (NZ) Ltd.
- Lange R. (1999). *May the people live: a history of Maori health development 1900-1920*. Auckland: Auckland University Press.
- Levy, M. et al. (2008). *Claiming spaces: proceedings of the 2007 National Māori & Pacific Psychologies Symposium 23-24 November 2007*. Hamilton: University of Waikato.
- Locke, S. (1882). *Historical traditions of the Taupo and East Coast tribes*. Wellington: Govt Printer.
- Mckinnon, M., Bradley, B., & Kirkpatrick, R. (1997). *New Zealand historical atlas, ko Papatuanuku e takoto nei*. Auckland: David Bateman in association with Historical Branch, Department of Internal Affairs.
- Mead, S. M. (2003). *Tikanga Māori: living by Māori values*. Wellington: Huia.

- Moses, D. A. (2008). Empire, colony, genocide: keywords and the philosophy of history. In D. A. Moses (Ed.), *Empire, colony, genocide: conquest, occupation and subaltern resistance in world history* (pp. 3-54). New York: Berghahn Books.
- Mullholland, M. (2006). *State of the Māori nation: twenty-first century issues in Aotearoa*. Auckland: Reed Publishing.
- Mutu, M. (1998). *Barriers to research: the constraints of imposed frameworks*. In Te Pūmanawa Hauora (Ed.), Proceedings of te oru rangahau Māori research and development conference (pp. 51-61). Palmerston North: Massey University.
- Mutu, M. (2005). Research ethics associated with Treaty of Waitangi claims and the foreshore and seabed legislation. In Ngā Pae o te Māramatanga (Ed.), *Tikanga rangahau, mātauranga tuku iho: traditional knowledge and research ethics conference 2004* (pp.. Auckland: Ngā Pae o te Māramatanga.
- Ngata, A. & Mead, H. M. (2004). *Ngā mōteatea: he maramara rere nō ngā waka maha, he mea kohikohi nā Sir Apirana Ngata*. Auckland: Auckland University Press.
- O'Malley, V. (1998). *Agents of autonomy – Māori communities in nineteenth century New Zealand*. Wellington: Huia Publishers.
- Office of Treaty Settlements. (no date). *Ka tika a muri, ka tika a mua – healing the past, building a future*. Summary edition. Wellington: Office of Treaty Settlements.
- Orange, C. *The Treaty of Waitangi*. Wellington: Bridget Williams Books Limited and Historical Branch, Department of Internal Affairs.
- Petrie, H. (2006). *Chiefs of industry, Māori tribal enterprise in early colonial New Zealand*. Auckland: Auckland University Press.

- Phillips, F. L. (1989). *Landmarks of Tainui - nga tohu a Tainui: a geographical record of Tainui traditional history*. Otorohanga: Tohu Publishers.
- Pool, I. (1991). *Te iwi Maori: a New Zealand past, present & projected*. Auckland: Auckland University Press.
- Rehrmann, N. (2003). A legendary place of encounter: the convivencia of Moors, Jews, and Christians in Medieval Spain. In D. Hoerder (Ed.) *The historical practice of diversity* (pp. 35-53). New York: Berghahn Books.
- Robertson, J. B. W. (1989). *Maori Settlement of the Waikato District*. Te Awamutu: Te Awamutu Historical Society.
- Royal, T. A. C. (1993). *Te haurapa: an introduction to researching tribal histories and traditions*. Wellington: Bridget Williams Books Limited and Historical Branch, Department of Internal Affairs.
- Royal, T. (1994). *Kāti au i konei: a collection of stories from Ngāti Toarangatira, and Ngāti Raukawa*. Wellington: Huia Publishers.
- Salmond, A. (1997). *Between worlds: early exchanges between Maori and Europeans 1773-1815*. Auckland: Penguin Books (NZ) Ltd.
- Sharp, A. & McHugh, P. (2001). *History, power and loss*. Wellington: Bridget Williams Books.
- Smith, L. T. (1999). *Decolonizing methodologies: research and indigenous peoples*. London: Zed Books.
- Smith, P. S. (1910). *History and traditions of the Maoris on the west coast, North Island of New Zealand prior to 1840, Polynesian Society Memoir, No. 1*. Christchurch: Capper Press.
- Soutar, M. (1994). Tribal history in history. In *Oral history in New Zealand*. 6, 29-40. National Oral History Association of New Zealand.

- Te Awekotuku, N. (1991). *He tikanga whakaaro: research ethics in the Māori community – a discussion paper*. Wellington: Manatū Māori-Ministry of Māori Affairs.
- Walker, R. (1990). *Ka whawhai tonu matou – struggle without end*. Auckland: Penguin Books (NZ) Ltd.
- Walsh-Tapiata, W. (1998). Research within your own iwi - what are some of the issues? In Te Pūmanawa Hauora (Ed.), *Proceedings of te oru rangahau Māori research and development conference* (pp. 249-256). Palmerston North: Massey University.
- Waymouth, L. (2002). 'Parliamentary representation for Māori: debate and ideology' in Te Wananga and Te Waka Maori o Niu Tirenī, 1874-8. In J. Curnow, N. Hopa, & J. McRae (Eds.), *Rere atu, taku manu! Discovering history, language, & politics in the Maori-language newspapers*. Auckland: Auckland University Press.
- Webster, P. (1979). *Rua and the Maori millennium*. Wellington: Victoria University Press.
- Wilson, M. & Hunt, P. (2000). *Culture, rights and cultural rights – perspectives from the South Pacific*. Wellington: Huia Publisher.

Pūrongo

- Aotearoa, W. (1958, October). Ngata's last message [Letter to editor]. *Te Ao Hou*, 24, 56. Retrieved from National Library of New Zealand collections.
- Ballara, A. (2004). *Tribal landscape overview, c.1800-c.1900 in the Taupo, Rotorua, Kaingaroa and National Park Inquiry Districts*. A report prepared for Crown Forestry Rental Trust. Wellington: Crown Forestry Rental Trust.

- Best, E. (1901). Te Whanga-nui-a-Tara. Wellington in Pre-Pakeha Days. *Journal of the Polynesian Society*, 10(3), 107-165
- Betts, R. K. (1994). The delusion of impartial intervention. *Foreign Affairs* 73 (6), 20-33.
- Boast, R. (2009). *Facing Maungatautari: war, confiscation and the land court in the Raukawa region 1856-1886*. A report prepared for Crown Forestry Rental Trust. Wellington: Crown Forestry Rental Trust.
- Galnoor, I. (2009). The Zionist debates on partition (1919 - 1947). *Israel Studies*, 14(6), 74-87
- Gudgeon, W. E. (1893). A sketch of the history of the Ngati-Tama tribe. *Journal of the Polynesian Society*, 2(3), 157-9
- Gudgeon, W. E. (1904). The toa taua or warrior. *Journal of the Polynesian Society*, 13(4), 238-264
- Gudgeon, W. E. (1893). The tangata whenua; or Aboriginal peoples of the central districts of the North Island of New Zealand. *Journal of the Polynesian Society*, 2(4), 203-210.
- Hearn, T. J. (2008). *Raukawa, land and the crown: a review and assessment of land purchasing in the Raukawa rohe*. A report commissioned by the Crown Forestry Rental Trust. Wellington: Crown Forestry Rental Trust.
- Hutton, J. (2009). *Raukawa traditional history summary report*. A report commissioned by Crown Forestry Rental Trust. Wellington: Crown Forestry Rental Trust.
- Irwin, K. (1994). Maori research methods and processes: an exploration. *Sites*, 28, 25-43

- McBurney, P. (2006). *Ngāti Mōtai and Ngāti Mahana cluster of claims: manawhenua report*. A report Commissioned by Crown Forestry Rental Trust. Wellington: Crown Forestry Rental Trust.
- Metge, J. (1990). Te rito o te harakeke: conceptions of the whanau. *Journal of the Polynesian Society*, 99(1), 55-91
- Raukawa Charitable Trust. (2011). *Iwi, community and education: iwi profile, community characteristics and education in the Raukawa rohe*. Tokoroa: Raukawa Charitable Trust.
- Raukawa Settlement Trust. (2012). *Raukawa Settlement Trust 2011-12 annual report*. Tokoroa: Raukawa Settlement Trust.
- Roberton, J. B. W. (1957). The role of tribal tradition in New Zealand prehistory. *Journal of the Polynesian Society*, 66(3), 249-263.
- Roberton, J. B. W. (1958). The significance of New Zealand tribal tradition. *Journal of the Polynesian Society*, 67(1), 39-57
- Sissons, J. (2004). Maori Tribalism and post-settler nationhood in New Zealand. *Oceania* 75(1), 19-31. Sydney: Oceania Publications.
- Statistics New Zealand. (2006). *Ngāti Raukawa (Waikato) iwi profile: Statistics New Zealand*. Wellington: Statistics New Zealand.
- Te Ao Hou. (1953). Mahinaarangi and Turongo. *Te Ao Hou*, 3, 15-24. Retrieved from National Library of New Zealand collections.
- Te Hiko, N. (2010). *Raukawa traditional history report*. Report commissioned by the Crown Forestry Rental Trust. Wellington: Crown Forestry Rental Trust.
- Te Paerata, H. (1888). *Description of the battle of Orakau, as given by the native Chief Hitiri Te Paerata of the Ngatiraukawa tribe, at the parliamentary buildings. 4th August, 1888*. Wellington: G. Didsbury, Government Printer.

- Voyce, M. (1989). Maori health in NZ: the Tohunga Suppression Act 1907. *Oceania* 60(2), 9-122.
- Waitangi Tribunal. (1993). *The Pouakani report*. Wellington: Brooker and Friend.
- Waitangi Tribunal. (2004). *Te raupatu o Tauranga Moana: report on the Tauranga confiscation claims*. Wellington: Legislation Direct.
- Whakamārama Reo Committee. (2007). *Whakamārama marae reo plan 2007 – 2030*. Whakamārama: Mā Te Reo.
- White, N. & Ladley, A. (2005). Claims to treaty and other rights: exploring the terms of Crown-Maori negotiation. *Policy Quarterly* 1(2). Wellington: The Institute of Policy Studies, School of Government, Victoria University of Wellington.
- Williams, D. (2001). *Crown policy affecting Maori knowledge systems and cultural practices*. Wellington: Waitangi Tribunal.