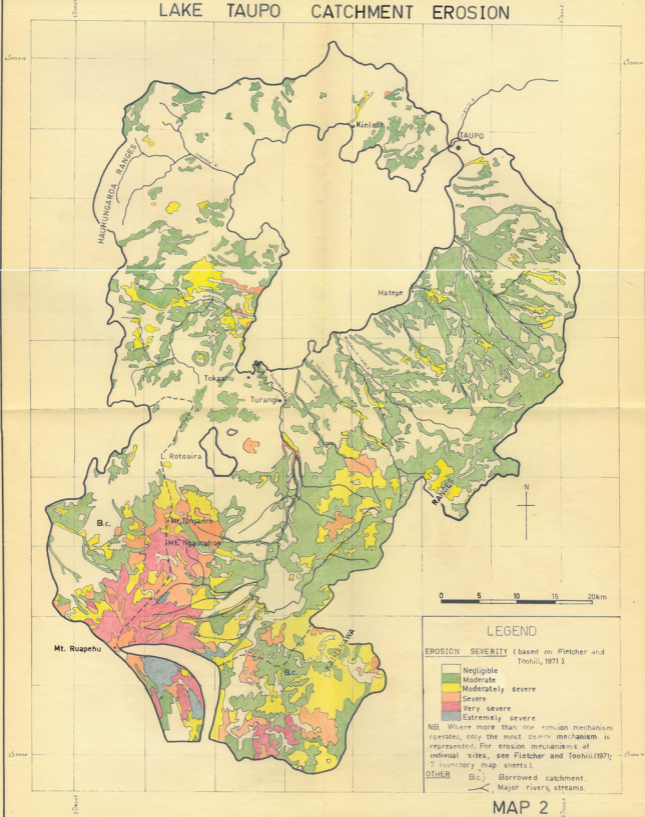


# LAKE TAUPO CATCHMENT EROSION



## LEGEND

**EROSION SEVERITY** (based on Fletcher and Toohill, 1971)

- Negligible
- Moderate
- Moderately severe
- Severe
- Very severe
- Extremely severe

**NB!** Where more than one erosion mechanism operates, only the most severe mechanism is represented. For erosion mechanisms at individual sites, see Fletcher and Toohill (1971; 7 inventory map sheets).

**OTHER** B.C.: Borrowed catchment.  
 Major rivers, streams.