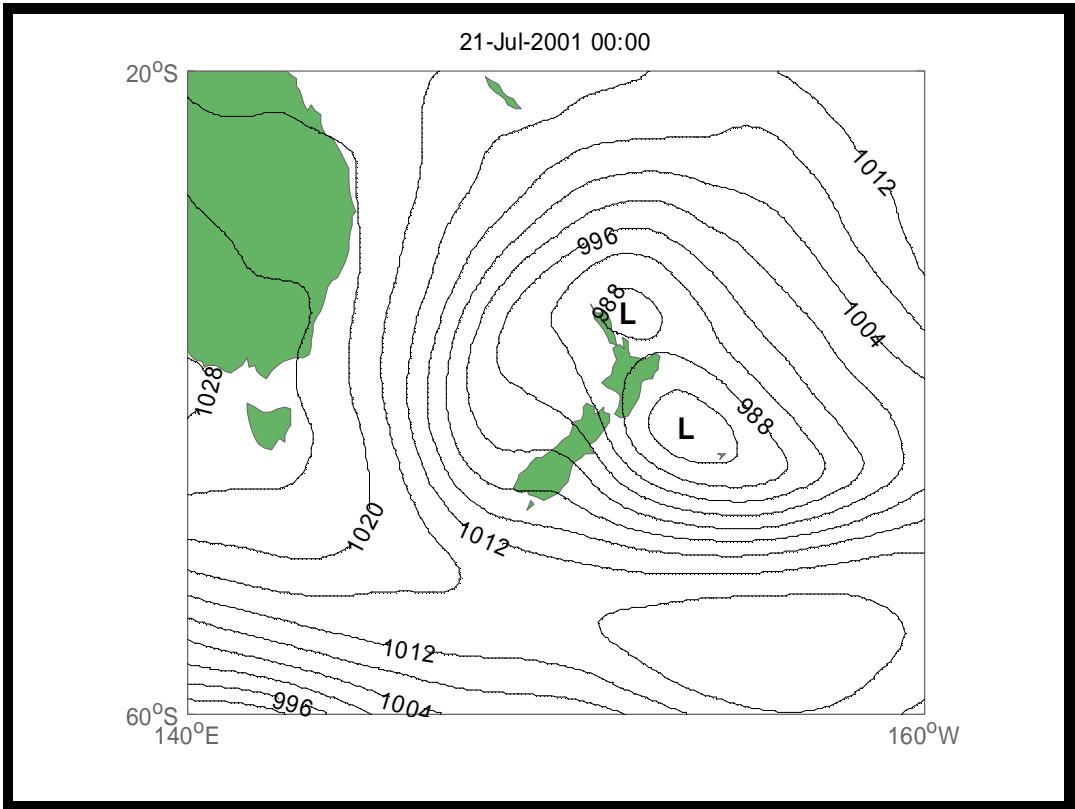


# Coastal Storm Database - Event Summary

Date: 20-23 Jul 2001	Wind Direction: S
Event Type: Wind/Wave	Gisborne Duration (Hours): -
Location: Wellington	Wellington Duration (Hours): 59
Origin: Tasman Sea	Pressure Gradient: S to SE
Type: East Coast Low	



### Synoptic Conditions

A large cyclonic system formed over NZ through the merging of a complex area of low pressure west of NZ and a northeast-moving southern ocean cyclone. On the 20th this large complex cyclone was over the Chatham Islands and had a strong SSE to SE flow on its southwestern side that swept over the upper South Island and lower North Island. As the cyclone moved north and then east, the intense flow moved over the eastern North Island and veered to the S and SE. This cyclone lingered off the east coast of the North Island from the 19th through to 22nd.

### Sea Conditions

11m swells in Cook Strait

### Maximum Wave Statistics

Location	Max Wave Height (m)	Period (s)
Wellington	8.1	8
Napier	5.0	11
*Maximum Wave Height		

### Maximum Wind Gusts (kph and dir)

Date	Gisborne	Napier	Wellington
------	----------	--------	------------

---

**Maximum Wind Gusts (kph and dir)**

Date	Gisborne	Napier	Wellington
20-Jul-01			80 (SW)
21-Jul-01			87 (S)
22-Jul-01			82 (S)
23-Jul-01			57 (SE)

---

**Impact Area**

Wellington

**Impacts and Damages**

- 11m swells in Cook Strait forced cancellation of most ferry crossings; ~2500 passengers stranded
  - Waimataitai Beach received pounding by huge seas that reached some backyards
  - Coastal farmers between Otaio and Mervin experienced huge swells that crossing stopbanks
  - Parts of footpath ripped away at Port Timaru
- 

Canterbury

**Data Source**

- 1 Huge Waves Pounding Farmland: Gisborne Herald, 21/07/2001, p36
  - 2 Wet 'N' Wild: Evening Post, 23/07/2001, p1
  - 3 Rescuers Battle Weather to Save Badly Hurt Motorist: Dominion Post, 23/07/2001, p1
-