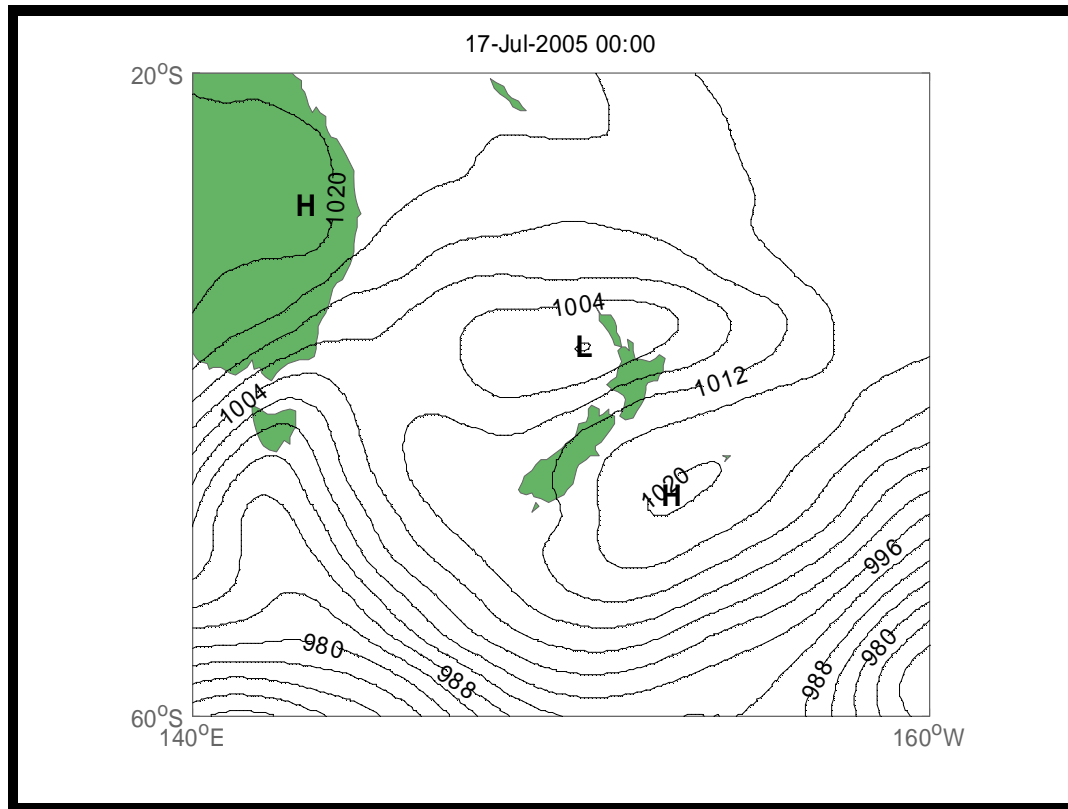


Coastal Storm Database - Event Summary

Date: **17 Jul 2005**
Event Type: **Wind**
Location: **Napier**
Origin: **Tasman Sea**
Type: **Anticyclonic**

Wind Direction: **E**
Gisborne Duration (Hours): **6**
Wellington Duration (Hours): **-**
Pressure Gradient: **ENE to E**



Synoptic Conditions

A cyclone developed in the central Tasman sea from the trough of a departing Tasman sea cyclone. It formed into a large cyclonic centre and on the 16th was west of Auckland whilst at the same time a large anticyclone was east of Otago and covered the South Island. Between these systems a strong ENE airstream was created over the eastern North Island.

Maximum Wave Statistics

Location	Max Wave Height (m)	Period (s)
Wellington	5.8	10
*Maximum Wave Height		

Maximum Wind Gusts (kph and dir)

Date	Gisborne	Napier	Wellington
17-Jul-05			45 (E)