

Topographic Legend

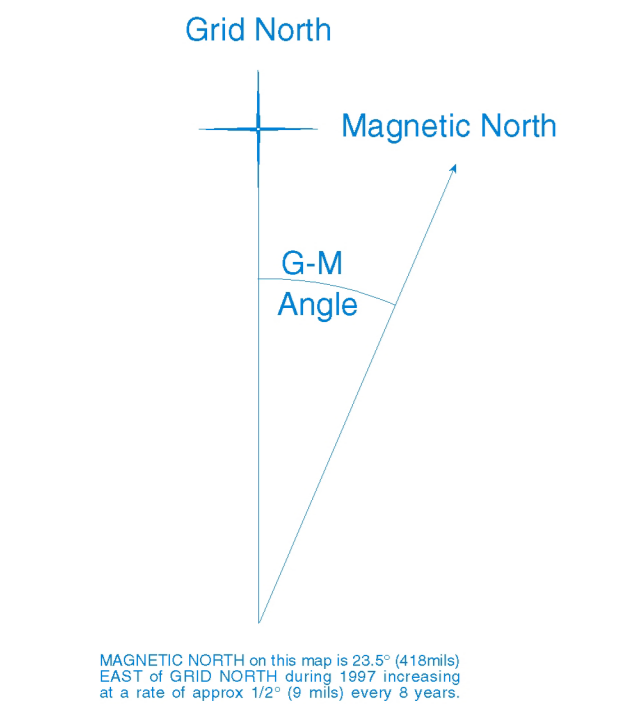
- ROADS**
- sealed
 - metalled
 - unmetalled
 - Vehicle track
 - Foot track
 - National State Highway

- WATER FEATURES**
- River, stream
 - Riverbody

- RELIEF FEATURES**
- Index contour
 - Intermediate contour
 - Trig station beaconed, unbeaconed
 - Elevation in metres
 - Cliff, terrace

- MISCELLANEOUS**
- Large buildings
 - Residential area
 - Building
 - Homestead
 - Airstrip
 - Mine, underground, opencast

- CULTURAL FEATURES**
- Localities (over 200)
 - Localities (under 200)
 - Homesteads
 - Miscellaneous features and descriptive notes
 - Airport
 - ROAD AND RAILWAY NAMES
 - TRACK NAMES
 - Trig identification numbers and names



MAGNETIC NORTH on this map is 25.9° (41.6mm) EAST OF GRID NORTH (using 1997 magnetic) at a rate of approx 12° (3 miles) every 5 years.

This map is drawn on the New Zealand Map grid Projection, a minimum error conformal projection. The grid is the New Zealand map grid, showing coordinates in metres in terms of the Geodesic Datum 1968, based on the International (WGS84) Spheroid.

TO GIVE A GRID REFERENCE ON THIS MAP (To nearest 100 metres)
Determine the smaller figure for corner grid numbers. They are for fixing full coordinates.

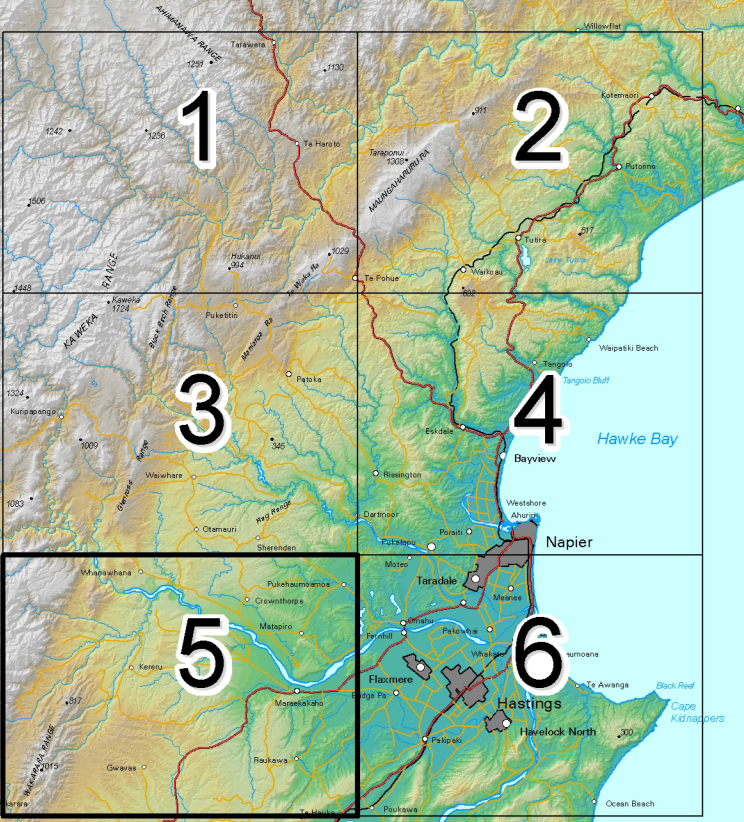
SAMPLE POINT		Approximate	West	
East	Approximate		West	Approximate
Locate first VERTICAL grid line to LEFT of point and read figure following the line in either the top or bottom margin, or across the centre of the map.	Locate first HORIZONTAL grid line to BELOW of point and read figure following the line in either the left or right margin of the map.		Estimate tenths eastward from grid line to point.	Estimate tenths northward from grid line to point.

SAMPLE REFERENCE (Quote sheet number first): V20 043852

The topography on this map is taken from the LINZ CD Rom 1:50 000 Topographic Vector Data Set. Note that this map covers all or part of topographic sheets NZMS 260 U21 Kereru and V21 Napier.

THE VERTICAL INTERVAL BETWEEN THE CONTOURS IS 20 METRES
HEIGHTS ARE ABOVE MEAN SEA LEVEL.

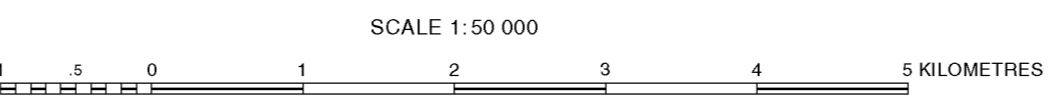
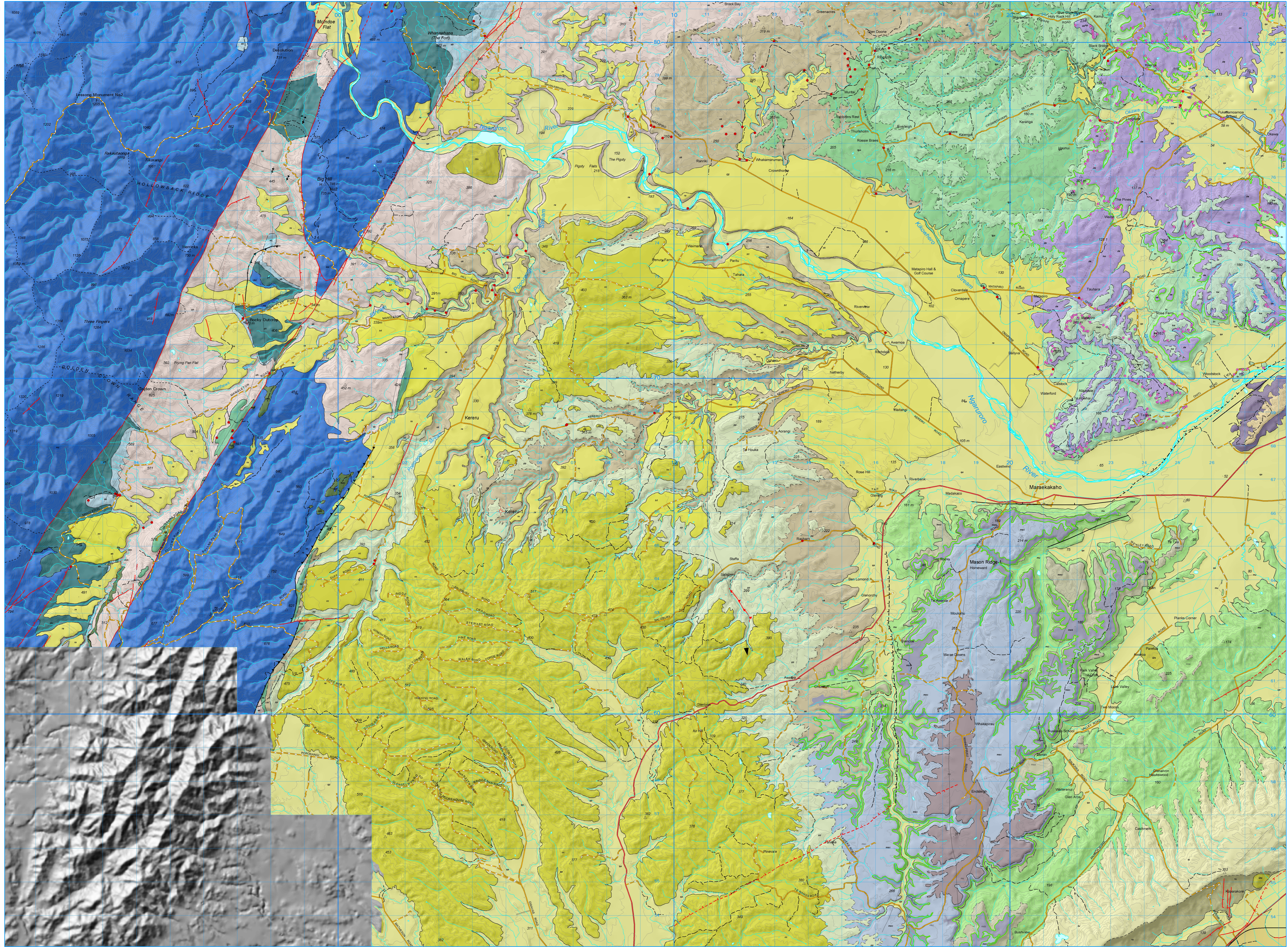
Geological Map
Enclosure 4
Kereru
1:50000
Sheet 5



Kyle J. Bland* and Peter J.J. Kamp 2014

Bland, K.J. and Kamp, P.J.J. 2014: Hawke's Bay forearc basin (eastern North Island, New Zealand): Stratigraphy, biostratigraphy, chronology, geological maps and paleogeology. Ministry of Business, Innovation and Employment, New Zealand, unpublished Petroleum Report PR4883, 66 p.

Department of Earth and Ocean Sciences
University of Waikato
* Current address: GNS Science



BIBLIOGRAPHIC REFERENCE

Bland, K.J. and Kamp, P.J.J. 2014: Hawke's Bay forearc basin (eastern North Island, New Zealand): Stratigraphy, biostratigraphy, chronology, geological maps and paleogeology. Ministry of Business, Innovation and Employment, New Zealand, unpublished Petroleum Report PR4883, 66 p.