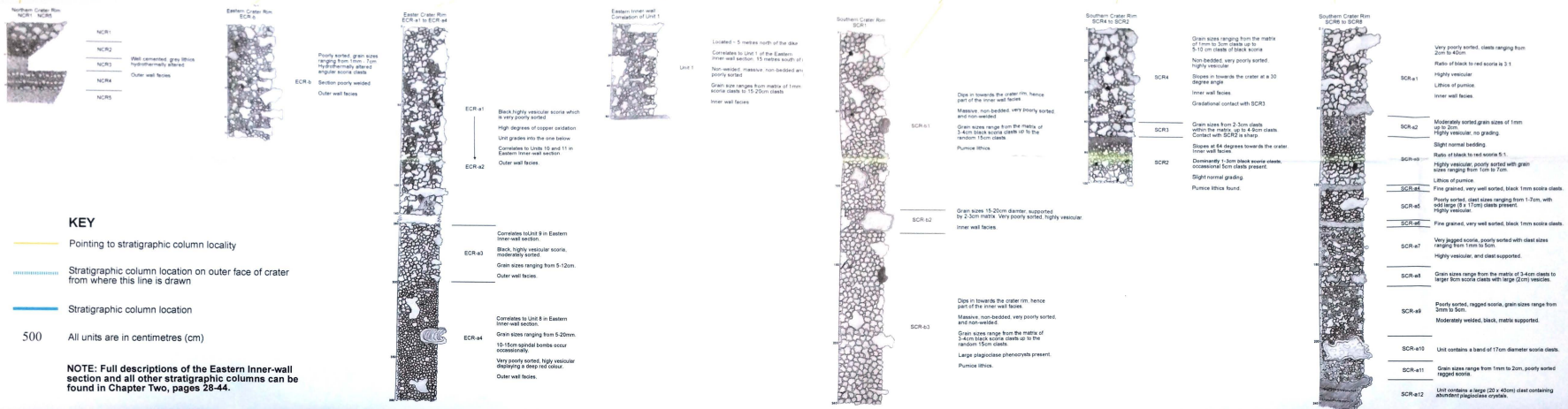
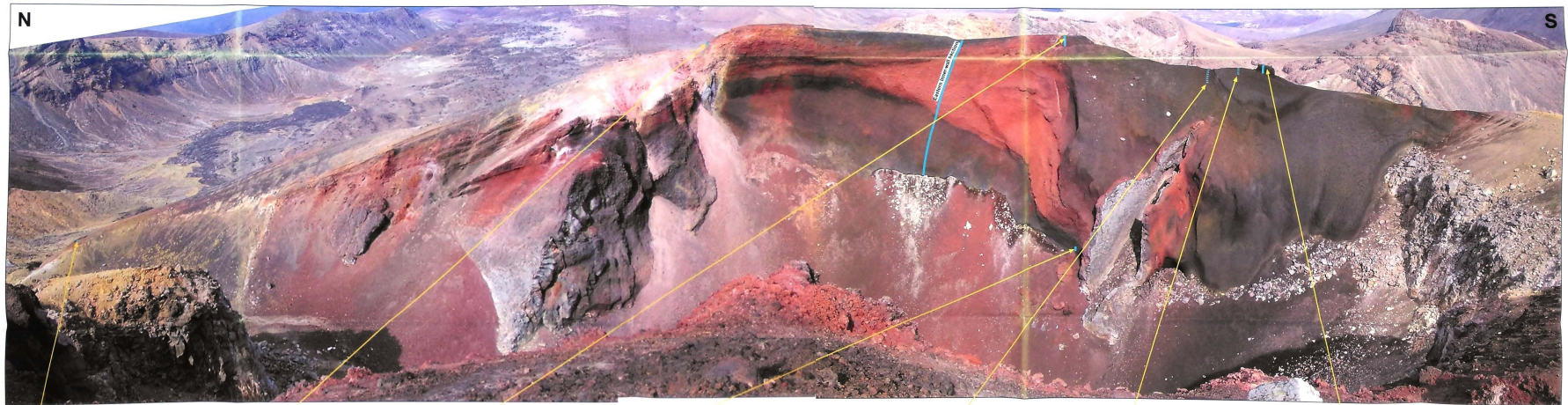


# Enclosure 1 – Red Crater Stratigraphic Columns

## Candice Bardsley

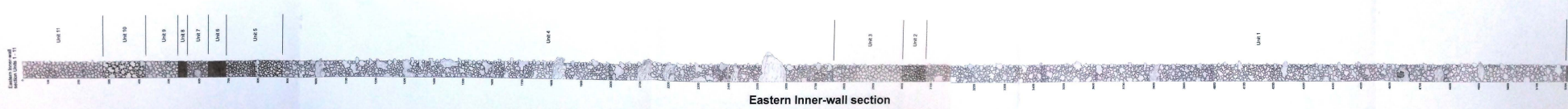


**KEY**

- Yellow line: Pointing to stratigraphic column locality
- Blue line: Stratigraphic column location on outer face of crater from where this line is drawn
- Red line: Stratigraphic column location

500 All units are in centimetres (cm)

**NOTE:** Full descriptions of the Eastern Inner-wall section and all other stratigraphic columns can be found in Chapter Two, pages 28-44.



Eastern Inner-wall section