

# Taku Haumarū Me Te Kuri

HE ARATOHU MŌ TE HAUMARU I WAENGA I TE TAMARIKI  
(8-9 PEA NGÀ TAU) ME TE KURI



PUKAPUKAITI KOREUTU

Te Reo Maori

## HEI MIHI

Ko ènei aratohu mò waenga o te hunga tamariki me ngà mòkai kuri he wāhanga o te Kaupapa Rangahau à-Raumati o Jennifer Carter, tètahi àkonga o Te Kura Kete Aronui o Te Whare Wānanga O Waikato, me tana kaitohutohu, arà Associate Professor David Swain. Ko te pūrongo *Stories With Happy Endings: Preventing Pet Dog Attacks on Children* (2008) he mea whai pūtea mai i te Child Accident Prevention Foundation, à, ka kitea mai i <http://waikato.researchgateway.ac.nz/handle/10289/768>

Mò te whakaaro ki te whakamahi i ènei aratohu, me mārāma mai ki ènei tū àhuatanga. He mea i àta rangahaua, he tika, he pono. He mea i takea mai i te tirohanga o ngà tuhinga whaimana, mai hoki i ngà uiuitanga o ngà hunga matatau, he mea tò tika, he mea i àta tiakina. Tirohia te wāhanga 'Ngà Mihi' o te pūrongo o 2008, kei reira te rārangi o ngà mātāpuna katoa o ngà mōhihio..

Kei te nui ngà mihi ki ngà iwi i whai wāhi mai ki te whakaputanga o tēnei pukapuka. He mihi nui anō ki:

- ⌘ The Department of Societies and Cultures o Te Whare Wānanga O Waikato mò te tautoko, me ngà rauemi,
- ⌘ Ko ngà kaimahi o Hamilton City Council Animal Care and Control Centre mò tà rātou tautoko tonu mai,
- ⌘ Shane Morton Photography mò ngà whakaahua koreutu,
- ⌘ Nadine Bryant o Skinks Tattoo Studio mò ngà tuhinga à-ringa koreutu,
- ⌘ Scorpion Design mò te hoahoa o te pukapuka, kàore rà he utu,
- ⌘ Nà Tom Roa, University of Waikato te pukapukaiti i whakamāori,
- ⌘ Mainfreight Limited mò te tohatoha o ngà pukapuka, kàore rà he utu,
- ⌘ The Pet Practice mò te takoha mai o ngà taputapu kuri e whakamahia ana ki ngà whakaahua,
- ⌘ Ko Bayer NZ Ltd, RNZSPCA, WBOPIACO, David Swain/University of Waikato, Hamilton City Council, Jenny Lala, Taupo District Council, Waikato District Council, Department of Internal Affairs, The Pet Practice, Rotorua District Council, Elaine Carter, Karapiro Pet Lodge, Waipa District Council me John Skipper mò te tautoko i te pūtea tà pukapuka.

Mei kore ake tēnei manaaki mai te whakaputanga o ènei pukapuka haumaruru kuri.

Ko taua mihi nui anō ki ngà tångata kua whakaahuatia:

Bethany, Brad, Glenn, Jaymee, Jennifer, Joshua, Karma, Kolbi, Margot, Oliver, Pouwhakaari, Sarah, Sarah, Sunshine, Taylor, Waikare, Warwick me Zach.

Ko ò mātou hoa kuri hoki: Abbie, Cocoa , Lucy, Lucy, Roddy, Tyson me Zoey.

Ko te whakaputanga tuatahi a tēnei pukaiti nà Jennifer Carter me David Swain, Department of Societies and Cultures, University of Waikato, Hamilton, New Zealand.

© 2008 Jennifer Carter me David Swain.

**ISBN 978-0-473-14367-1**



Kia ora

Mà tēnei pukapuka koe e ako ki te haumarua me te kurī. He kurī pea tāu i te kāinga, kua tūtākina rānei koe ki tētahi kurī noho ki te whare o tētahi atu.

Pānuitia tēnei pukapuka ki tētahi pakeke, ki tētahi hoa rānei ka kōrerotia ai ngā aratohu o roto. Ko tō māua tūmanako me ngahau mai koutou i ngā mahinga o tēnei pukapuka.

Kia maumahara mai, ko te nuinga o ngā kurī he hoahoa, he ngākaunui ki te tangata. He mea nui me atawhai e tātou ngā kararehe katoa. Ki te manaaki tātou i a rātou, ka manaaki mai rātou i a tātou.

Heoi anō mō tēnei wā

*Jennifer me David*



*Kia maumahara mai, ko te nuinga o ngā kurī he hoahoa, he ngākaunui ki te tangata.*

Kei te whakaaetia te tā anō i ngā rauemi ki te katoa, ki tētahi wāhanga noa rānei, ɛngari kia kaua e whakarerekētia, kia mihiā te mātāpuna, me te whakamōhio atu ki ngā kaituhi (mā David Swain [dswain@waikato.ac.nz](mailto:dswain@waikato.ac.nz)).

Kei <http://hdl.handle.net/10289/968> tētahi pukaiti Reo Ingarihi mō ngā tamariki (5-6 pea ngā tau)

Kei <http://hdl.handle.net/10289/975> tētahi pukaiti Reo Māori mō ngā tamariki (5-6 pea ngā tau)

Kei <http://hdl.handle.net/10289/930> tētahi pukapukaiti Reo Ingarihi mō ngā tamariki (8-9 pea ngā tau)

Kei <http://hdl.handle.net/10289/984> tētahi pukapukaiti Reo Māori mō ngā tamariki (8-9 pea ngā tau)

Kei <http://hdl.handle.net/10289/931> tētahi pukapukaiti Reo Ingarihi mō ngā mātua/kaitiaki

Kei <http://hdl.handle.net/10289/985> tētahi pukapukaiti Reo Māori mō ngā mātua/kaitiaki





# Reliable

Tried and trusted flea control  
for over 10 years

For more than a decade, vets and pet owners have relied on Advantage® to stamp out flea problems fast.

It not only kills adult fleas on the animal (within just one hour<sup>1</sup> of contact), but also tackles the larvae that lurk in your carpets, furniture and pets' bedding.

So a single monthly topical treatment is all you need to stop the biting, itching and scratching that can make your pet's life a misery.

Remember, your pet depends on you – discover why your vet depends on Advantage®.



Fast, efficient flea control.



Advantage® is a registered trademark of Bayer AG, Leverkusen, Germany. Advantage® is registered pursuant to the ACVM Act 1997, No. A7522  
<sup>1</sup>Cruthers L., Bock E., (1997) Evaluation of How Quickly Imidacloprid Kills Fleas on Dogs. Suppl. Compen. Contin. Educa. Pract. Vet. Vol. 19(5), 1997.  
Mehlhorn H., (2000) Mode of Action of Imidacloprid and Comparison with Other Insecticides (i.e. Fipronil and Selamectin) In Vivo and In Vitro Experiments. Suppl. Compen. Contin. Educa. Prac. Vet. Vol. 22(4A), 4-8  
Mehlhorn H. et al., (1999) Effects of imidacloprid on adult and larval stages of the flea Ctenocephalides felis after in vivo and in vitro application: a light-and electron-microscopy study. Parasitol. Res. Vol. 85: 625-637

# 1. WHAKAPÀ ATU KI TE RANGATIRA MÒ MUA NOA O TE TÙTAKITANGA KI TÀNA KURÌ!!

Me whakapà atu e koe te rangatira mò mua noa atu o te tùtakitanga tuatahi i te kurì! Mò mua noa o te whakapà atu ki tètahi kurì, he ahakoa pèhea ngà pàtanga atu, kua e oma atu ki te awahi, ki te pòpò rànei i a ia. Mà te rangatira e kī mai he pai te kurì ki te hunga tamariki, kàore rànei. Ki te kī mai 'Ae, he pai':

- 🔑 Me tū mārīre, tū tōtika, ò ringa ki ò taha,
- 🔑 Tukua kia rua pea ngà ùpane ki waenga i a kòrua ko te kurì, à, mà te kurì e haere mai ki a koe,
- 🔑 Me ngàwari te tangi o tò reo ki te kurì,
- 🔑 Ka tau ana, whakapàorohia tètahi o ò ringa, ko ngà matimati e koropiko ana ki raro, kia hongingia e te kurì,
- 🔑 Mea nui, me hūmàrie, me tau i ngà wà katoa.



*Te tùtaki ki tètahi kurì*

# 2. PÒPÒNGIA TE KAUWAE, TE UMA, TE TAHA O TE KAKÌ RÀNEI !

Kua rawa te pane o te kurì e pòpòngia. Ka mutu te hòngi mai a te kurì, àta miria te kauwae, te uma, te taha rànei o te kakì. Kua rà tò kanohi e pàtata atu, kua hoki e titiro mākutu ki òna karu.

- 🔑 Mò te kurì pakupaku, me tūturi pea, èngari me tōtika tonu tò tuarà. Kua rawa e koropiko ki runga i te kurì.
- 🔑 Àta pàngia te kauwae o te kurì, te uma, te taha rànei o te kakì. Kàore te kurì e pai kia pòpòngia te mähunga e te tangata.



*Pòpòngia te kauwae, te uma, te taha o te kakì rànei*

### **3. HE AHAKOA TÒ PÀTANGA ATU KI TE KURÌ I MUA – KIA TÙPATO!!**

Hei ahakoa nà tò hoa noho tata, nà tò hoa, nà tò nana, nà tò whaea kèkè rānei he mea kitekite e koe, me tonu tonu mò mua noa o te tākaro me tana kurī. Tēnā pea kua pā kē atu èngari, kei te mōhio ia kàore koe i te noho ki tona whare, kàore hoki i te rite tana mōhio ki a koe, pērā i tana mōhio ki òna rangatira. Kei pōhēhē mai he kino nōu, ka ngaua koe, he tiakitanga i a ia anō, i òna rawa rānei. Kia tūpato ki ngā kurī e noho ana me ètahi atu tāngata, ahakoa tò pātanga atu i tètahi wā o mua!

He maru anō o te mātakitaki mai o tètahi pakeke ina tākaro ana koe me te kurī a tètahi atu.

### **4. KAUA RAWA E HAERE HUNA ATU KI TE KURÌ!**

**Kaua rawa e haere huna atu ki te kurī e kai ana, e moe ana, kei ohore mai!** Kei ngaua koe e te kurī, kua ara ohore, kua matakū, kua pōauau mai, kei te mamae rānei – he ahakoa nāu anō ia. Kia kitea mai koe e te kurī mò mua noa o tò pātanga atu. Kia kitea, kia hōngingia koe e ia mò mua o tò pōpō i a ia.

### **5. KÀORE TE NUINGA O NGÀ KURÌ E HOAHOA MAI PÈRÀ ME TÀU!**

**He rerekè ngā kurī katoa!** Mēnā he kurī tū i tò kàinga, kàore e kore he hoahoa mai, te take e mōhio ana ia nō tò whānau ia. Me tūpato koe ki te kurī kàore i te noho ki tò whare, te take kàore ia i te tino mōhio ki a koe. Kei ngau kau mai, te take kàore i te taunga ki ò hiahia tākaro.

### **6. KI TE TERE MAI TE KURÌ KI A KOE ME RITE KOE KI TE PAKOKO!**

**Ki te whakapōrearea mai te kurī ki a koe, tukua ngā mea ki ò ringa kia taka, ka 'tū whakapakoko ai' koe (whakarākau rānei).** He mea hōhā te pakoko ki te kurī – ko tana he haere noa mai ki te hongihongi, ka haere noa atu. He pai te kurī ki te hongihongi mea kia rongohia he aha taua mea, ko wai rānei. Ka kite koe i te hunga kurī e hongia ana tètahi i tètahi. Ko ia rā anō te take e hongia mai ai te kurī i a koe e tū pakoko ana. Ko ia tana mò te pā atu, me te kimi māmamatanga mōu. Kia mau mahara mai, kaua ngā karu o te kurī e titiro mākutuhia i a koe e tū pakoko ana.



SHANE MORTON  
photographer

## TE TÙ PAKOKO...

- ⌘ **Me tù mārīre, tù tōtika**, kia kotahi o waewae, ò ringa ki raro o tō kauwae, ò whatianga ki tō uma. Mè he kai, he tōi, he aha rānei kei ò ringa, tukua kia taka ki raro,
- ⌘ **Kaua e hāpārangi, kaua hoki e oma**. He matakū pea nōu èngari me māia koe, **ME TÙ MĀRĪRE** – tukua te kurī kia haere mai ki te hongī i a koe, tōna tikanga ka hongī mai, ka haere atu,
- ⌘ **Kaua e titiro mākutu atu ki ngà karu o te kurī** kei pōhēhē mai he hiahia nōu ki te whawhai. Tirohia ana wae, tana uma, te tihi rānei o tana mähunga,
- ⌘ **Ki te oreore mai te kurī, àta huri atu kia kitea e koe kei whea rà ia i ngà wā katoa**. Kaua rà ia e tukua kia haere ki muri i a koe,
- ⌘ **Ki te whakaekea koe e te kurī, tiaki i a koe** mà te waiho i tètahi mea ki waenga i a kōrua me te kurī. He koti pea, he pouaka kai, he pèke, he pukapuka, he paihikara, ahakoa te aha, ko tètahi mea hei maru mōu,
- ⌘ **Me tù pakoko kia haere atu te kurī** kia tae rawa mai rānei tètahi pakeke hei àwhina i a koe. Àta haere whakamuri, me te anga tonu atu ki te kurī; kia mau mahara mai, kaua e titiro mākutu atu ki ana karu,
- ⌘ **Kaua rawa e tahuri atu ka oma!**



*Te tù pakoko*

## TE TOKA TÙ...

- ⌘ **Ki te taka koe, ki te pàorongia rānei ‘me toka tù’**. Me koromeke, tō kanohi ki raro, ò ringa ki runga o tō kaki, tō ùpoko rānei. Tiakina tō kanohi. Me takoto kau – kaua e ngangà te waha, e takahurihuri rānei,
- ⌘ **Me toka tù kia oma atu te kurī** kia tae rawa mai rānei tètahi pakeke ki te àwhina i a koe. Ka neke koe, me àta haere. Me àta nuku whakamuri, me te anga tonu atu ki te kurī. Kia maumahara mai, kaua e titiro mākutu ki ana karu,
- ⌘ **Kaua rawa e tahuri atu ka oma!**



*Te toka tù*



Proudly sponsored by the Waikato BOP  
Branch of the New Zealand Institute of  
Animal Control Officers



Please contact your local Animal Control Unit for  
assistance with dog control matters or advice

Hamilton City Council	<a href="http://www.hamilton.co.nz">www.hamilton.co.nz</a>
Kawerau District Council	<a href="http://www.kaweraudc.govt.nz">www.kaweraudc.govt.nz</a>
Matamata-Piako District Council	<a href="http://www.mpdc.govt.nz">www.mpdc.govt.nz</a>
Opotiki District Council	<a href="http://www.odc.govt.nz">www.odc.govt.nz</a>
Otorohanga Animal Control Services	<a href="http://www.otodc.govt.nz">www.otodc.govt.nz</a>
Rotorua District Council	<a href="http://www.rdc.govt.nz">www.rdc.govt.nz</a>
Ruapehu District Council	<a href="http://www.ruapehudc.govt.nz">www.ruapehudc.govt.nz</a>
South Waikato District Council	<a href="http://www.southwaikato.govt.nz">www.southwaikato.govt.nz</a>
Taupo District Council	<a href="http://www.taupo.govt.nz">www.taupo.govt.nz</a>
Tauranga City Council	<a href="http://www.tauranga.govt.nz">www.tauranga.govt.nz</a>
Thames-Coromandel District Council	<a href="http://www.tcdc.govt.nz">www.tcdc.govt.nz</a>
Waikato District Council	<a href="http://www.waikatodc.govt.nz">www.waikatodc.govt.nz</a>
Waipa District Council	<a href="http://www.waipadc.govt.nz">www.waipadc.govt.nz</a>
Waiitomo Animal Control	<a href="http://www.waitomo.govt.nz">www.waitomo.govt.nz</a>
Western Bay of Plenty District Council	<a href="http://www.westernbay.govt.nz">www.westernbay.govt.nz</a>
Whakatane District Council	<a href="http://www.whakatane.govt.nz">www.whakatane.govt.nz</a>

# HAMILTON PARENTS CENTRE

*"Educating & supporting parents since 1952"*

**Positive birth experiences and informed parenting in  
a community where parents are supported and highly  
valued in their role.**



We offer:

- Childbirth Education (antenatal) class
- Parent Education classes
- Toy Library
- Music group
- Kiwi Parent magazine

**For quality childbirth education  
classes and ongoing support during  
pregnancy and beyond, contact:**

**Hamilton Parents Centre**

**07 8536110**

**[hpcbaby@xtra.co.nz](mailto:hpcbaby@xtra.co.nz)**

51 Parents Centres nationwide, find a Parents Centre near you at  
[www.parentscentre.org.nz](http://www.parentscentre.org.nz)

*"This content was made possible with action research funding managed by David Swain / University of Waikato"*

## 7. KAUA E OMAOMA HĀPĀRANGI I WAENGA O TE HUNGA KURÌ!

**Kaua rawa e omaoma, e hāpārangi, e eke pahikara, e retireti pātata atu ki te kurī.** Kei matakū mai ētahi kurī i te mea kāore i te taunga ki te hunga tamariki me ēnei tūmomo mahi. Kei whāia mai koe, kei ngaua mai rānei e ētahi kurī.

Mēnā koe i tō kāinga, i tō tētahi atu rānei e hiahia ana ki te omaoma, ki te hāpārangi, ki te tākaro whawhai me ētahi atu tamariki, me tonu wawe pea ki tētahi pakeke kia puta atu te kurī kia whai wāhi maru atu anō. He mea nui, nō te mea ka tākaro whawhai te hunga tamariki, kei ngaua te tamariki tauhou i te pōhēhē kei te tūkinongia āna tamariki ake. Ki te kore te kurī e puta atu, ka tū ihiihi rawa, me 'tū pakoko' koutou ko ò hoa tamariki.

## 8. KAUA RAWA E OMA ATU I TE KURÌ!

**He aha koa tō tino matakū, kaua rawa e ngangā te waha, e oma rānei!** Ki te hiahia koe ki te puta atu i tētahi kurī, me āta nuku whakamuri atu, me hū hoki. Me hiahia nui ki te tahuri, āta huri atu kia kitea te kurī i ngā wā katoa. Kaua rawa e tuku i te kurī kia neke ki muri i a koe, te tini o te tamariki e ngaua whakamuri mai ana e te kurī! Kia mau mahara mai anō, kaua rawa e titiro mākutu ki ngā karu o te kurī – tirohia òna matimati, tōna uma rānei, te tihi rānei o tana mähunga.



**Nā Kirstie Smith te whakaahua i hōmai**

*Te anga whakamuri  
atu i te kurī*

## 9. KAUA RAWA E WHAKANEHE, E WHAKATOI I TE KURÌ!

**Ka ngaua pea e te kurī te hunga whakahōhā i a ia.** Kaua rawa òna taringa, tōna waero, òna huruhuru e kukumea. Kaua hoki e kukume i tētahi toi, rākau rānei, mea noa iho rānei mai i tōna waha. Kaua e nohoia te tuarā o te kurī, kei whara ia. Kāore rawa he take o te wero, te patu rānei i te kurī ki te rākau. Kia mau mahara mai, ka ngaua koe e tētahi kurī mēnā e matakū ana, e pōauau ana, e mamae ana ... à, ka ngau tūturu i a koe! E mōhio ana koe kāore koe e whakaea kia whakahōhā i te kurī ... nō reira, kaua!

## 10. ME NOHO MATARA ATU I TE KURÌ E KAI ANA!

**He pai ki te kurī te kai, te ngau wheua rānei me tōna kotahi.** Ki te pā atu koe i te kurī i a ia e kai ana, kei pōhēhē mai ia kei te tango atu koe i āna kai. Kei ngaua koe e ia, he tiaki noa tāna i āna kai. He pai kē atu, me noho matara atu koe i ngā kai me ngā wheua a te kurī, mē i te kai ia, kāore rānei.



# Dogs are One of the Family

Treat them with kindness and respect and they'll give unconditional love.

You can find your *FOREVER FRIEND* at an SPCA near you.



## 11. WHÀNGAIA TE KURÌ KI TE PAPA.

**Kaua e tukua te kurì kia tango atu i te kai mai i ò ringa.** Ko te kurì ako i te tango kai mai i te ringa o te hunga tamariki he mea kapo pea i te kai mai i te kòhungahunga, he ngau hoki pea i a ia. Whàngai ana koe i te kurì, he pai kè atu te tuku i te kai kia taka. Kaua rawa e whàngai ki ngà kai mai i tò pereti.

## 12. KAUA TE KURÌ E AWHIAWHI, E KIHIKIHI RÀNEI.

**Kàore te kurì e pai kia awhitia ki te kaki, kia kihia rànei; kàore i te pèrà te tikanga ki a ràtou.** Tae atu ki tàu kurì ake, kàore e pai te kihi i a ia, te awhi ki te kaki, te whakatata rànei i tò kanohi ki ana niho. He kiriweti te tuku i te kurì kia mitimiti i tò kanohi, he piro nõ tana hã, he hongì rà anò i ngà nono o ètahi atu kurì, kei mau hoki i a koe òna noke, òna pirinoa hoki.

## 13. ME NOHO MATARA MAI I TE KURÌ TIAKI MEA!

**He kararehe tiaki rohe te kurì, i àna rawa, i tònà kàinga.** Tènà pea nàna, nà tana rangatira aua rawa, te kàinga, te iàri, te motukà, te moenga, te whare kurì rànei. He aha koa kua pà kè atu koe i te kurì, he whakahoahoa tonu tònà àhua, kaua e pàtata atu. Arà:

- 🔑 Kaua rawa e whàtoro atu i tètahi taiapa ki te pòpò i te kurì – e tiaki ana ia i te kàinga o tana rangatira,
- 🔑 Kaua te kurì e pòpòhia mà te wini– e tiaki ana ia i te motukà,
- 🔑 Kaua te kurì kei muri o te taraka e pòpòhia – e tiakia ana ia i te taraka,
- 🔑 Kaua te kurì e pòpòhia, e tàkarohia rànei i a ia i runga i tana moenga. He pai kè te karanga atu ki puta mai i reira mènà e pìrangi ana koe ki te pòpò i a ia,
- 🔑 Kei tùpono ngaro atu tò pàoro ki kò o tètahi taiapa, kaua koe e haere tika atu ki te tiki. Tonoa atu tètahi pakeke kia àwhina mai.

Ki te pàtata atu koe ki tètahi kurì e tiaki ana i àna rawa, kei pòhèhè mai he maoho koe, ka ngaua koe, ko tònà he tiaki noa i tònà rohe.



*Ki te manaaki  
tātou i a ràtou,  
ka manaaki  
mai ràtou i a  
tātou.*



# KARAPIRO PET LODGE

Kaye & Ray Lord  
Phone 07 827 8379



SH1 SOUTH      KARAPIRO ROAD      CAMBRIDGE  
Mobil Karapiro      SH1 TO HAMILTON

**we are here**

www.petlodge.co.nz

**LOVE • ATTENTION • CARE** *Your Pet Deserves the Best*

## Care to care for a canine?

Dog adoptions are a way to re-home suitable dogs with responsible dog owners.



Visit our website to check out the dogs we have looking for a caring new home.



Because we know **you** care.



**ADOPT A DOG**

[www.hamilton.co.nz/adoptadog](http://www.hamilton.co.nz/adoptadog)  **Hamilton City Council**  
Te kaunihera o Kirikiriroa



**SPCA**<sup>®</sup>  
WAIKATO



*This advertisement was proudly sponsored by Jenny Lala.*

- Can adopt a pet from SPCA Waikato.
- Can foster an animal from SPCA Waikato.
- Could become a volunteer.
- Could join the bed and breakfast brigade.
- Could get involved in the education programmes.

**Did you know YOU**

**Did you know SPCA Waikato receives NO Government funding, There is so much more we could do with your valued support!**

**For further information on how to get involved go to ...**  
**www.waikato.sPCA.net.nz**  
**or contact Adrienne at the Waikato SPCA phone 078474868**

## 14. KAUA TE KURÌ E WHAKAAKONA KIA MÀNGONGE TE TÀKARO!

He mōrearea nō te tākaro whaiwhai, taaronarona hoki me te kurì. He whakaako ènei tākaro i te kurì ki te ngau, kia mǎngonge hoki me te tangata – kàore tātou e pīrangi ki tērā! He pai kē atu te *‘Huna me te Kimi*, kia kimihia koe, tètahi mea rānei e te kurì ka *tīkina atu*, ka utua te whakahoki mai ki tètahi mea hari ka whakaakona ai te kurì ki te whakahoki mai. Ka taea hoki e koe te whakaako i tò kurì ki te noho, te takoto, te takahuri, me te tākaro tīraha kau. Ko tètahi pakeke hei maru mōu, hei àwhina hoki i a koe. He pai kē hoki te àta pōpō, àta pà atu i te kurì.

*Te kori ‘tīkina atu’  
me te kurì*



## 15. ME WAIHO TE KURÌ KOTAHÌ KI TÒNA KOTAHÌ!

- 🔑 Ka kite atu ana koe i tètahi kurì poka noa e omaoma ana me tōna kotahì, huri atu, me whai huarahi kē atu i a ia. Kaua rawa e karanga kia haere mai te kurì poka noa – he mea mōrearea tērā! Mènà kua rawekengia, kua whakanehea e ètahi atu tamariki, kei pōhèhè mai ka whara ia i a koe kei ngaua koe, he tiaki noa tana i a ia anō.
- 🔑 Ka kite atu ana koe i tètahi kurì kua herea ki tōna kotahì, waihotia atu! Kei waho pea o tètahi toa, i tètahi mākete nui, kei tò iàri ake rà anō pea, he manu whiri ki tò whare. Ko te kurì tauhou kua herea, waihotia atu, te take, ka kore e taea te oma atu i a koe, ka ngau i a koe, ko tana he tiaki noa i tōna rohenga.

## 16. WHAKAPÀ ATU KI TE PAPI KURÌ ME TÈTAHI PAKEKE!

Mò te papi kurì noho tonu ki tōna māmā, he pai atu mà te pakeke te papi kurì e hiki, ka tukua atu ki a koe i a koe e noho ana. He kaha te whāereere kurì ki te tiaki i àna papi. Nò reira ia ka ngau ai i tètahi ki tana whakaponu he mōrearea ki àna papi. Me tino tūpato mènà kàore te whāereere i te noho ki tò kàinga, te take kàore pea ia e mōhio mai ki a koe ka pōhèhè he mōrearea anō nōu. Ahakoa te rawe noa o te papi kurì, kia mau mahara mai he koi anō òna niho!

## 17. ĀKONA TE 'REO KURĪ'

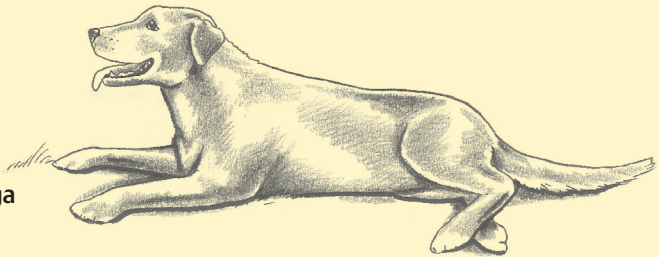
He whakamahi kupu tā te tangata kōrerorero. Kāore te kurī e whakamahi i te kupu, nō reira he mea nui me mārāma ki a koe te 'reo kurī'. Mā taua mārāma nei koe e maru ai, ka mōhio ai koe i te wā e pīrangi ana te kurī kia waihotia ia ki tōna kotahi.

Ka 'kōrero ana te kurī mā' te tinana katoa e mārāma ai e pēhea ana ia. Me titiro e tātou ngā taringa, ngā ngutu, te whiore; e tū mārō ana te tinana, e tuohu kau ana rānei. Ko te pahupahu me te ngengere tētahi wāhanga iti noa o tōna reo. Ki te mārāma tātou ki te reo kurī, ka mōhio tātou he ngāwari te kurī, he hiahia tākaro rānei, he matakū rānei, he nui rānei te riri. Kei ngā whakaahua o raro ake nei ētahi whakamārāma he aha ā rātou kōrero.

I ētahi wā he ngau kau mai mēnā he nui te tākaro. Kei te reo o te kurī ngā whakatūpatotanga kia mōhio ai tātou he matakū nōna, he riri rānei mō mua noa o te ngau mai. Kaua e pātata at u ki te kurī e mea mai ana he matakū nōna, he nui rānei tōna riri!

### E WHAKANGĀ ANA

Ki konei, ko tā Bella ki a koe, kei te whakangā ia. He ngāwari te āhua o tana tinana, he whakapapatahi te takoto o ana huruhuru. He whētero nō tana arero ki tana hotuhotu, he koanga te āhua o tōna kanohi



### E HIA TĀKARO ANA

Ki konei ko tā Bella, he hiahia kori nōna. Kei raro ko ā mua o tōna tinana, ko ā muri kei runga. Kei runga tōna whiore, me te āta piu mai pea. Kei runga ana taringa, ka āhua pahupahu pea.

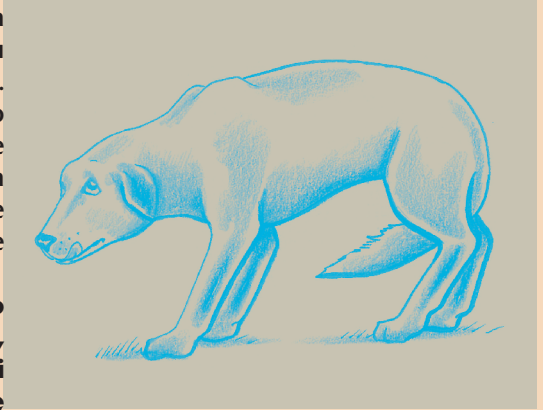


## E MATAKU ANA

Ki konei ko tã Bella, waihotia ia, kua matakua ia!

Ko tãna me moroitiiti rawa atu ia. Kua tukuna tãna tinana katoa kia pãtata atu ki te papa, me te kũnãwiri anõ rã pea. Kua koropikongia tana whiore ki raro o tana tinana. Kei raro òna taringa, he pãtata rãnei ki tana ùpoko. Kua tũ pea ngã huruhuru o tana tuarã. Kãore ia e pirangi ki te titiro ki a koe, ka huri kũ atu tana kanohi.

**Kia maumahara, kua rawa e titiro mākutu ki ngã karu o te kuri, èrangì rawa ia i tãna whakaatu mai e matakua ana ia! Ka ngaua koe e te kuri matakua ina tãmau kino ia!**



## E TINO RIRI ANA

Ki konei e mea ana a Jess, me noho atu rã, waihotia ia! Kua whakatakariri! E mea ana kia nui rawa tãna àhua, kia tũ wehiwehi. He tũ mārõ, tũ tiketike, kua titaha ki mua. Kua tũ tana whiore ki runga. He mea piurã anõ pea. Kei te tũ ngã huruhuru o tãna tuarã. Kei mua òna taringa, kua kørürũ tana ihu, e tètè mai ana ana niho! Ka titiro mākutu mai ia ki a koe, ka ngangara, ka ngengere, ka auau mai ki a koe.

**Kia maumahara, kua rawa e titiro mākutu ki ngã karu o te kuri, èrangì rawa ia i tãna whakaatu mai e takariri ana ia!**



Kua àkona koe inãianeì ki ètahi wãhanga o te reo kuri. Kua mõhio koe me titiro e koe ki ngã wãhanga katoa o te tinana o te kuri kia kitea atu e pèhea ana ia. He mea nui, me aro atu ki te reo kuri kia mõhio ai ki tana hiahia kia waihotia atu ia.

**Kia mau mahara mai, e hara te whiore piurã i te tohu whakahoahoa i ngã wã katoa.**

## I A KOE E HAEREERE NOA ANA...

- ⌘ Mènà e hikoi haere atu ana koe i tètahi kàinga, ka oma mai tètahi kurì ki a koe, me 'tù pakoko'. Kia mau mahara, kaua e titiro mākutu ki ngà karu o te kurì.
- ⌘ Mènà e haere pahikara ana i tètahi kàinga, ka oma mai tètahi kurì ki a koe, ME TÙ, e heke i tò pahikara, whakamahia hei maru i waenga i a koe me te kurì. Kaua e haere tonu atu, he tere ake te oma a te kurì; kei whai mai ka ngaua mai ai koe. Ki te hinga te pahikara, me "tù pakoko", ki te hinga rānei koe, me "toka tū".
- ⌘ Me tù pakoko, toka tū rānei kia haere atu te kurì, kia tae rawa mai rānei tètahi pakeke ki te àwhina mai. Ka haere koe, me àta nuku atu i te kàinga rà, me te mātakitaki tonu i te kurì. Kaua rawa e tahuri ka oma atu.
- ⌘ Kaua te kurì e mau ki te kokonga; tukua te wāhi kia oma atu. Ki te kore e taea e te kurì te oma atu i a koe, kei ngaua pea koe, he pōhehè pea he whakawehi nōu i a ia.
- ⌘ Kia mau mahara mai kàore tēnei kurì i te mōhio ki a koe. E tiaki ana ia i òna rawa, he whakapono nōna he maoho koe.

*Te tù pakoko*



**THE BREEZE**

[www.thebreeze.co.nz](http://www.thebreeze.co.nz)



## HEI WHAKARÀPOPOTO:

1. PÀTAITIA TE RANGATIRA MÒ MUA O TE PÀTANGA KI TANA KURÌ!
2. PÒPÒNGIA TE KAUWAE, TE UMA, TE TAHA RÀNEI O TE KAKÌ!
3. AHAKOA NGÀ PÀTANGA ATU O MUA – ME TÛPATO TONU!
4. KAUA RAWA TE KURÌ E WHAKAPÀ HUNA ATU.
5. KÀORE NGÀ KURÌ KATO A I TE RITE KI TÀU MÒ TE WHAKAHOAHOA!
6. KI TE OMA MAI TE KURÌ – ME TÛ PAKOKO!
7. KAUA E OMA, E HÀPÀRANGI ME TE KURÌ!
8. KAUA RAWA E OMA ATU I TE KURÌ!
9. KAUA RAWA E WHAKANEHE, E RAWEKE RÀNEI TE KURÌ!  
? Kua rawa e whakatata atu ki te kuri e titiro mākutu ana, e mamae ana rānei.
10. ME NOHO MATARA ATU I TE KURÌ E KAI ANA!
11. WAIHOTIA NGÀ KAI A TE KURÌ KI RARO.
12. KAUA TE KURÌ E AWHITIA, E KIHIKIHIA.
13. ME NOHO MATARA MAI I TE KURÌ TIAKI MEA!
14. KAUA TE KURÌ E WHAKAAKONA KIA MÀNGONGE TE TÀKARO!
15. WAIHOTIA TE KURÌ KOTAHI KI TÒNA KOTAHI!  
? Kitea ana e koe te kurī tauhou kua herea, waihotia atu!
16. ME WHAKAPÀ ATU KI TE PAPI KURÌ ME TÈTAHI PAKEKE !
17. ÀKONA TE REO KURÌ.  
? Kia maumahara, kua rawa e titiro mākutu ki ngà karu o te kurī!

**Kàore kau he ture KOTAHI mō ngà take katoa, i ngà wà katoa, ka kore ai te kurī e ngau mai. Ko ènei pitopito whakamàrama hei whakaheke pea i ngà tūpono ngauranga mai.**



*The Pet Practice*



## TAUPO DISTRICT COUNCIL ANIMAL MANAGEMENT

Contact us about on our educational programme.  
We can supply information on:

- bite prevention
- dog behaviour
- dog exercise areas
- pooper scooper bags
- rules and regulations

Our offices are in Taupo, Turangi and Mangakino  
0800 866 832 or [www.taupo.govt.nz](http://www.taupo.govt.nz)



# Stay safe around dogs this summer

[www.dogsafety.govt.nz](http://www.dogsafety.govt.nz)

THE DEPARTMENT OF INTERNAL AFFAIRS

Te Tari Taiwhenua



Waikato District Council believes education is a vital tool in ensuring community safety whilst allowing people to enjoy the benefits of dog ownership.

Officers are available to give presentations on dog control function, caring for and controlling of dogs, and bite prevention to the following groups:

- Schools
- Public events
- School pet days
- Dog owners
- Community groups
- Discussion groups



# KIMIHA NGÀ WHEUA...

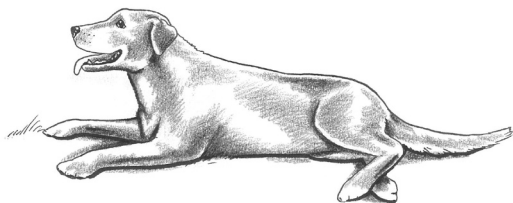
Kia kitea e koe ngà wheua ... kātahi ka whakakīia ai ki te tae.



**Kia kitea e koe ngà wheua e 6 → Ka pai!!**  
**Kia kitea e koe ngà wheua e 9 → Pai rawa!!!**  
**Kia kitea e koe ngà wheua e 13 → Tino pai!!**

## **TE REO KURI...**

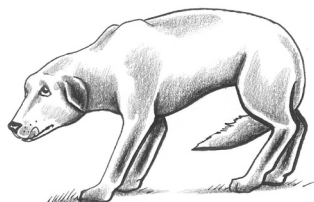
Tuhia tètahi rārangi mai i te pikitia o te kurī ki ngā kupu mō taua pikitia.



**E HIA TĀKARO  
ANA**



**E WHAKANGĀ  
ANA**



**E TINO RIRI  
ANA**



**E MATAKU ANA**

## TIKA, HÈ RÀNEI

E hia o ngà tohutohu kei te maumaharatia?  
Porowhitatia te TIKA, te HÈ rānei ki te taha o ia pātai ...

- |   |   |          |
|---|---|----------|
| ? | Me whakapà atu ki te papi kurī me tètahi pakeke!          | TIKA /HÈ |
| ? | Kaua rawa e titiro mākutu ki ngà karu o te kurī           | TIKA /HÈ |
| ? | Ki te tere mai te kurī ki a koe me rite ki te pakoko      | TIKA /HÈ |
| ? | Ehara te whiore piu i te tohu whakahoahoa i ngà wà katoa. | TIKA /HÈ |
| ? | Kaua rawa e tahuri atu ka oma!                            | TIKA /HÈ |
| ? | Me noho matara atu i te kurī e kai ana!                   | TIKA /HÈ |
| ? | Kaua rawa e karanga kia haere mai te kurī poka noa        | TIKA /HÈ |
| ? | Kaua e omaoma hāpārangi i waenga o te hunga kurī!         | TIKA /HÈ |
| ? | Kaua rawa e whakanehe, e whakato i te kurī!               | TIKA /HÈ |
| ? | Kaua te kurī e whakaakona kia mǎngonge te tākaro          | TIKA /HÈ |

**Kei te pūtake o te whārangi 23 ngà whakautu.**

## TE NOHO HAUMARU ...

Whiria te kupu pai ake mai i te pouaka o raro ake nei hei whakaea i ia rerenga kòrero.

1. Me \_\_\_\_\_ atu e koe te rangatira mò mua noa atu o te tūtakitanga tuatahi i te kurī!
2. Ka mutu te hōngi mai a te kurī, àta miria te kauwae, te \_\_\_\_\_, te taha rānei o te kaki.
3. Kàore te kurī e pai kia \_\_\_\_\_ ki te kaki, kia kihia rānei; kàore i te pèrà te tikanga ki a rātou.
4. Kia \_\_\_\_\_ ki ngà kurī e noho ana me ètahi atu tângata, ahakoa tò pātanga atu i tètahi wà o mua!
5. Ka kite atu ana koe i tètahi kurī kua \_\_\_\_\_ ki tōna kotahi, waihotia atu!
6. Kei ngaua koe e te kurī, kua ara ohorere, kua \_\_\_\_\_, kua pòauau mai, kei te mamae rānei – he ahakoa nàu anò ia.
7. Ki te taka koe, ki te pàorongia rānei ‘me \_\_\_\_\_ tū’.
8. Kei tūpono ngaro atu tò \_\_\_\_\_, tò toi rānei ki kò o tètahi taiapa, kaua koe e haere tika atu ki te tiki; tonoa atu tètahi pakeke kia àwhina mai.
9. Kaua rawa e whàtoro atu i tètahi taiapa ki te pòpò i te kurī – e \_\_\_\_\_ ana ia i te kàinga o tana rangatira.

uma

toka

awhitia

mataku

tūpato

whakapa

tiaki

herea

paoro

**Kei te pūtake o te whàrangī 23 ngà whakautu.**

## KIMI KUPU...

Kimihia ngà kupu o te haumarū kūrī mai i te panga.

M H O I H P R W N T T R A O E  
T I A K I R O H E R K E H W T  
O E K N P K M N R I W M T U P  
K W T E A E I À P A K A H W E  
A H W I M O O T A P Ù T E M R  
U A A I N M R A T A T A N P E  
R K R N P O E A W H O K A I G  
O A H W W H R T K M E U U N N  
U N N T I P M I P À M A K G E  
N G N E N U W H R N T N W N G  
P À H U P A H U W I H A R I N  
T A H W I T K P A K A O I A U  
K N K H O E R A U A G N K H T  
M A U N G M K P T H W W A W E  
W H K W H K O K O K A P R O M

toka

pakoko

tiaki rohe

me tau

whakapà

ngengere

tùpato

pahupahu

e whakangà ana

e mataku ana

e hia tàkaro ana

e tino riri ana



**“I’m in training.  
Remember to ask if  
you can pat me.”**

To find out more about the RNZFB’s red puppies and how you can help with donations or volunteering check out [www.redpuppy.org.nz](http://www.redpuppy.org.nz)

Before Guidance comes Trust



Principal Sponsor of



RNZFB

GUIDE DOG  
SERVICES

*This advertisement was proudly  
sponsored by Alaine Carter*

Proudly Sponsored By



*Special People  
Special Company*

Four Hamilton City Locations

Tristram St Clinic  
Hillcrest Clinic  
Flagstaff Clinic  
Dinsdale Clinic

# THE PET PRACTICE

*"Vets That Love Pets"*

- Veterinary Care & Advice
- Full Medical & Surgical Facilities
- X-Ray & Ultrasound
- Puppy Play School
- Dental Care
- Pet Accessories
- Premium Petfood
- Boarding Cattery



**24 Hour Phone: 838 2200**



DESTINATION  
**ROT@RUA**  
ROTORUA DISTRICT  
COUNCIL



Rotorua District Council Animal Control proudly supports "My Safety Around Dogs" and RESPONSIBLE DOG OWNERSHIP.

For any information on any Control matters or our dog adoption campaign:



ph 07 348 4199

website: [www.rdc.govt.nz](http://www.rdc.govt.nz)  
address: Civic Centre  
1061 Haupapa St  
Private Bag 3029  
Rotorua Mail Centre  
Rotorua 3046



**TUHIPOKA...**

# RAUEMI HEI ÁWHINA ATU

## PUKAPUKA

McLaine, S. (2004). **Can I pat that dog?** Pymble, N.S.W.: Angus & Robertson.

Weston, R., and Ross, C. (2004). **Kids & dogs: Teaching them to live, play and learn together.** Crows Nest, N.S.W.: Allen & Unwin.

## PAE TUKUTUKU

The Department of Internal Affairs <http://www.dogsafety.govt.nz>

Christchurch City Council <http://www.ccc.govt.nz/animals>

The Humane Society of the United States <http://www.hsus.org>

Doggone Safe <http://www.doggonessafe.com>

The American Veterinary Medical Association

[http://www.avma.org/communications/brochures/dog\\_owners.asp](http://www.avma.org/communications/brochures/dog_owners.asp)

The Kennel Club Safe and Sound Scheme

🔑 The 20 Safety Tips [http://www2.the-kennelclub.org.uk/sashi\\_code](http://www2.the-kennelclub.org.uk/sashi_code)

🔑 The interactive website for learning

[http://www2.the-kennel-club.org.uk/safe\\_and\\_sound.html](http://www2.the-kennel-club.org.uk/safe_and_sound.html)

Society for the Prevention of Cruelty to Animals [www.spcakids.com](http://www.spcakids.com)



*He kararehe  
hoahoa te kurī –  
he pai ki a rātou  
te noho ngātahi  
me te tangata.*



THE UNIVERSITY OF  
**WAIKATO**  
*Te Whare Wānanga o Waikato*

**ISBN 978-0-473-14367-1**