

Treatment and survival disparities by ethnicity in New Zealand women with stage I–III breast cancer tumour subtypes

Ross Lawrenson¹  · Chunhuan Lao¹ · Ian Campbell² · Vernon Harvey³ · Sanjeeva Seneviratne⁴ · Melissa Edwards² · Mark Elwood⁵ · Nina Scott⁶ · Jacquie Kidd⁷ · Diana Sarfati⁸ · Marion Kuper-Hommel⁶

Received: 31 May 2017 / Accepted: 21 September 2017
© Springer International Publishing AG 2017

Abstract

Purpose This study aims to look at the distribution of different subtypes of stage I–III breast cancer in Māori and Pacific versus non-Māori/Pacific women, and to examine cancer outcomes by ethnicity within these different subtypes. **Method** This study included 9,015 women diagnosed with stage I–III breast cancer between June 2000 and May 2013, recorded in the combined Waikato and Auckland Breast Cancer Registers, who had complete data on ER, PR and HER2 status. Five ER/PR/HER2 subtypes were defined. Kaplan–Meier method and Cox proportional hazards model were used to examine ethnic disparities in breast cancer-specific survival.

Results Of the 9,015 women, 891 were Māori, 548 were Pacific and 7,576 others. Both Māori and Pacific women were less likely to have triple negative breast cancer compared to others (8.6, 8.9 vs. 13.0%). Pacific women were more than twice as likely to have ER–, PR– and HER2+ cancer than Māori and others (14.2 vs. 6.0%, 6.7%). After adjustment for age, year of diagnosis, stage, grade and treatment, the hazard ratios of breast cancer-specific mortality for Māori and Pacific women with ER+, PR+ and HER2– were 1.52 (95% CI 1.06–2.18) and 1.55 (95% CI 1.04–2.31) compared to others, respectively. Māori women with HER2+ cancer were twice more likely to die of their cancer than others.

✉ Ross Lawrenson
Ross.Lawrenson@waikatodhb.health.nz

Chunhuan Lao
chunhuan.lao@waikato.ac.nz

Ian Campbell
Ian.campbell@waikatodhb.health.nz

Vernon Harvey
Vernonh@adhb.govt.nz

Sanjeeva Seneviratne
sanjeeva@srg.cmb.ac.lk

Melissa Edwards
Melissa.Edwards@waikatodhb.health.nz

Mark Elwood
mark.elwood@auckland.ac.nz

Nina Scott
Nina.Scott@waikatodhb.health.nz

Jacquie Kidd
j.kidd@auckland.ac.nz

Diana Sarfati
diana.sarfati@otago.ac.nz

Marion Kuper-Hommel
Marion.Kuper@waikatodhb.health.nz

¹ Medical Research Unit, The University of Waikato, Level 3 Hockin Building, Waikato Hospital, Hamilton, New Zealand

² School of Medicine, The University of Auckland, Auckland, New Zealand

³ Auckland City Hospital, Auckland, New Zealand

⁴ Department of Surgery, Faculty of Medicine, University of Colombo, Colombo, Sri Lanka

⁵ School of Population Health, The University of Auckland, Auckland, New Zealand

⁶ Waikato District Health Board, Hamilton, New Zealand

⁷ School of Nursing, The University of Auckland, Auckland, New Zealand

⁸ Department of Public Health, The University of Otago, Wellington, New Zealand

Conclusions Outcomes for Māori and Pacific women could be improved by better treatment regimens especially for those with HER2+ breast cancer and for women with ER+, PR+ and HER2– breast cancer.

Keywords Breast cancer · Subtypes · Ethnic disparities · Estrogen receptor · Progesterone receptor · Human epidermal growth factor receptor 2

Introduction

Biomarkers, including oestrogen receptor (ER), progesterone receptor (PR) and human epidermal growth factor receptor 2 (HER2), are important prognostic and predictive indicators for breast cancer. In New Zealand, ER and PR status have been routinely measured for the last 25 years. The measurement of HER2 status became increasingly common from the first part of this century and has been routine since 2006. Women with breast cancers that are both ER and PR positive (+) have a better prognosis than those with ER and PR negative (–) disease, while women with HER2+ cancers have a worse prognosis than those with HER2– disease [1]. A US study showed that women with ER+, PR+ and HER2– breast cancer were half as likely to die of breast cancer as those with ER–, PR– and HER2+ cancers [2]. This large study also demonstrated that women with triple negative (ER–, PR– and HER2–) breast cancer had the worst prognosis after adjustment for cancer stage [2]. This is consistent with the results in other studies [3–5].

Patients can receive personalised treatments based on the results of these biomarkers [6–8]. Women with hormone receptor-positive (ER+ and/or PR+) breast cancers are recommended to receive endocrine therapy and women with HER2+ breast cancer may benefit from chemotherapy and trastuzumab [9–12]. Trastuzumab was first funded in New Zealand for use in early stage HER2+ breast cancer in July 2007 [10].

There are great variations in the prevalence of breast cancer subtypes by ethnicity [12]. African American, Hispanic Whites, and Asian/Pacific Islanders were shown to be more likely to have HER2+ breast cancer than Non-Hispanic Whites in the US [12, 13]. African Americans were twice as likely to have triple negative breast cancer as Non-Hispanic Whites [12]. Within the same breast cancer subtype, there are ethnic disparities in survival. Asian/Pacific Islanders had a better breast cancer-specific survival in most subtypes than non-Hispanic Whites, except in the ER+, PR– and HER2+ subtype [13].

New Zealand has a population of 4.7 million, with 15% Māori and 7% Pacific people [14]. Māori is the indigenous population in New Zealand [15], while Pacific people [16] are a heterogeneous group with a long history of migration

to NZ from an array of island nations, including but not limited to Fiji, Samoa, Tonga and Cook islands. In a previous study, Māori and Pacific women were shown to be more likely to be diagnosed with HER2+ breast cancer than others (22%, 27 vs. 16%, p value < 0.05) [17]. Māori women were significantly more likely to have hormone receptor-positive cancers than others, but Pacific women were less likely [17]. There have been limited studies investigating the ethnic differences in subtypes in New Zealand [18, 19]. It is well recognised that there are differences in the treatment of Māori and Pacific women with breast cancer and that they have poorer survival [17–22]. This study aims to look at the distribution of different subtypes of stage I–III breast cancer in Māori and Pacific versus non-Māori/Pacific, and to examine the treatment and outcomes by ethnicity within different subtypes.

Methods

Data sources

This study included 9,015 women diagnosed with stage I–III breast cancer between June 2000 and May 2013, recorded in the combined Waikato and Auckland Breast Cancer Registers, who had complete data on their ER, PR and HER2 status [23]. 2,783 stage I–III breast cancer cases with incomplete information on ER, PR, and HER2 were excluded. The registers' data includes patient characteristics (age and ethnicity), tumour information (diagnosis date, cancer stage and grade) and information on treatment (surgery, endocrine therapy, chemotherapy, trastuzumab and radiation therapy). Information on comorbidities was obtained by reviewing linked data from the National Minimum dataset (NMDS) and characterising patients as having no comorbidities (C0), one comorbidity (C1) or 2 or more (C2+) using the C3 comorbidity index [24, 25].

The three biomarkers ER, PR and HER2 were designated as being either positive or negative. In this study, HER2+ was defined as FISH amplified or IHC 3+. There are eight possible groups defined by ER, PR and HER2 status. There is a small group (1%, 112) of women with breast cancer that is ER– but PR+. These women are usually treated with hormone therapy that is the same as women with ER+, PR+ cancer. We categorised women into five groups based on the clinical advice and practice in our region. The grouping is similar to published literature [26–30].

- Group 1 (ER+, PR+, and HER2–): 5,331 women
- Group 2 (Mixed ER/PR, HER2–):
 - ER+, PR–, and HER2–: 1,037 women
 - ER–, PR+, and HER2–: 88 women
- Group 3 (HER2+ not overexpressing):

- ER+, PR+, and HER2+: 573 women
- ER+, PR–, and HER2+: 261 women
- ER–, PR+, and HER2+: 24 women
- Group 4 (HER2+ overexpressing):
 - ER–, PR–, and HER2+: 589 women
- Group 5 (Triple negative):
 - ER–, PR–, and HER2–: 1,112 women

Statistical analyses

Cancer characteristics and treatments by ethnicity within the five subtypes were explored, and differences were examined by Chi-Square tests. Logistic regression models were used to estimate the odds ratios of receiving endocrine therapy, chemotherapy and trastuzumab by ethnicity within the five subtypes after adjustment for age, year of diagnosis, cancer stage, grade and C3 score [24, 25].

Mortality data for this study was derived from the National Mortality Collection and linked via the National Health Index (NHI) number to the register data. The NHI number is a unique identifier for people who use health and disability services in New Zealand. For cancer-specific survival analyses, patients who died from other causes were censored on their date of death, and patients without mortality information were considered to be censored on the last updated date for Mortality Collection which was 31 December 2014. The Kaplan Meier method was used to examine ethnic disparities in breast cancer-specific survival within the five subtypes. Cox proportional hazard models were used to estimate the hazard ratio of dying of breast cancer for Māori and Pacific women compared to others in the five subtypes after adjustment for age, year of diagnosis, stage, grade and treatments. All data analyses were performed in IBM SPSS statistics 23 (New York, United States).

Ethical approval for the study was granted through the Northern A Health and Disability Ethics Committee (reference: 12/NTA/42/AM01).

Results

Of the 9,015 women, 891 were Māori, 548 were Pacific, and 7576 were others including European and Asian (Table 1). Both Māori and Pacific women were less likely to have triple negative breast cancer compared to others (8.6% and 8.9 vs. 13.0%). Pacific women were more than twice as likely to have HER2+ overexpressing (Group 4) cancer than Māori and other women (14.2 vs. 6.7% and 6.0%), but were less than half as likely to have mixed ER/PR, HER2 (Group 2) breast cancer than Māori and others (5.5 vs. 11.2% and 13.1%). Māori and Pacific women were more likely to have stage III breast cancer than others in the five subtypes, except

for Māori women with mixed ER/PR, HER2– cancer (Group 2). Among women with ER+, PR+ and HER2– breast cancer, Pacific women were significantly more likely to have grade 3 disease than others (21.5 vs. 12.4%). However, only 67.4% of Pacific women with triple negative breast cancer (Group 5) had grade 3 cancer compared to 80.6% of others.

For women with ER+, PR+ and HER2– (Group 1) breast cancer, Māori and Pacific women received more endocrine therapy and chemotherapy (Table 2). After adjustment for age, year of diagnosis, cancer stage, grade and C3 score (Table 3), there was no difference in treatment between Māori and others, but Pacific women were less likely to receive chemotherapy (odds ratio 0.51, 95% CI 0.35–0.75) than others. Among women with triple negative or HER2+ disease, Pacific women were again less likely to be treated with chemotherapy (Table 3). After adjustment for other factors (age, year of diagnosis, cancer stage, grade and C3 score), Māori women with HER2+ breast cancer were half as likely to receive trastuzumab than others, and Pacific women with HER2+ breast cancer were only 20% as likely to receive chemotherapy and trastuzumab than others.

Kaplan–Meier method showed small but significant differences in breast cancer-specific survival for women with ER+, PR+, and HER2– cancer (Group 1) and women with HER2+ overexpressing cancer (Group 4) by ethnic group (Fig. 1). The respective 5-year breast cancer-specific survival for Māori, Pacific and others with ER+, PR+, and HER2– cancer was 94.2, 93.1 and 96.5% (p value for Log-rank test < 0.001). In women with HER2+ overexpressing breast cancer (Group 4), the 5-year breast cancer-specific survival (Fig. 2) was worst for Māori (57.8%), followed by Pacific (66.4%) compared with others (78.5%) (p value < 0.001). No significant ethnic differences in breast cancer-specific survival were found in women with mixed ER/PR, HER2– (Group 2), HER2+ not overexpressing (Group 3) or triple negative cancer (Group 5).

After adjustment for age, year of diagnosis, stage, grade and treatment (specified in Table 4), hazard ratios of breast cancer-specific mortality for Māori and Pacific women with ER+, PR+ and HER2– cancer (Group 1) were 1.52 (95% CI 1.06–2.18) and 1.55 (95% CI 1.04–2.31) compared to others. Survival differences between Pacific women and others with HER2+ breast cancer were not significant after adjustment for other factors. However, Māori women with HER2+ breast cancer (Group 3 and 4) were twice more likely to die of their cancer than others.

Discussion

Breast cancer survival inequities between ethnic groups of women in New Zealand are large and of great concern. There is an increasing understanding that cancer survival inequities

Table 1 Characteristics by ethnicity in the five subtypes

Characteristics	Māori		Pacific		Others		Total N	Chi square test (p value)
	N	%	N	%	N	%		
Subtype								<0.001
Group 1 (ER+, PR+, and HER2-)	555	62.3	327	59.7	4,449	58.7	5,331	
Group 2 (Mixed ER/PR, HER2-)	100	11.2	30	5.5	995	13.1	1,125	
Group 3 (HER2+, not overexpressing)	99	11.1	64	11.7	695	9.2	858	
Group 4 (HER2+ overexpressing)	60	6.7	78	14.2	451	6.0	589	
Group 5 (Triple negative)	77	8.6	49	8.9	986	13.0	1,112	
Group 1 (ER+, PR+, and HER2-)								
Cancer stage								<0.001
Stage I	248	44.7	122	37.3	2,318	52.1	2,688	
Stage II	228	41.1	129	39.4	1,570	35.3	1,927	
Stage III	79	14.2	76	23.2	561	12.6	716	
Cancer grade								<0.001
Grade 1	170	31.1	91	27.9	1,536	35.1	1,797	
Grade 2	311	56.9	165	50.6	2,300	52.5	2,776	
Grade 3	66	12.1	70	21.5	542	12.4	678	
Unknown	8		1		71		80	
Age (years)								<0.001
<50	186	33.5	131	40.1	1,240	27.9	1,557	
50–69	307	55.3	166	50.8	2,293	51.5	2,766	
70+	62	11.2	30	9.2	916	20.6	1,008	
C3 score								<0.001
0	389	70.1	251	76.8	3,623	81.4	4,263	
1	48	8.6	19	5.8	348	7.8	415	
2+	118	21.3	57	17.4	478	10.7	653	
Year of diagnosis								0.055
2000–2003	28	5.0	16	4.9	366	8.2	410	
2004–2006	115	20.7	67	20.5	948	21.3	1,130	
2007–2009	173	31.2	104	31.8	1,370	30.8	1,647	
2010–2013	239	43.1	140	42.8	1,765	39.7	2,144	
Group 2 (mixed ER/PR, HER2-)								
Cancer stage								0.004
Stage I	41	41.0	9	30.0	418	42.0	468	
Stage II	45	45.0	8	26.7	408	41.0	461	
Stage III	14	14.0	13	43.3	169	17.0	196	
Cancer grade								0.071
Grade 1	16	16.7	4	13.8	213	22.0	233	
Grade 2	52	54.2	10	34.5	476	49.1	538	
Grade 3	28	29.2	15	51.7	281	29.0	324	
Unknown	4		1		25		30	
Age (years)								<0.001
<50	23	23.0	14	46.7	200	20.1	237	
50–69	66	66.0	13	43.3	545	54.8	624	
70+	11	11.0	3	10.0	250	25.1	264	
C3 score								0.076
0	69	69.0	21	70.0	783	78.7	873	
1	9	9.0	2	6.7	82	8.2	93	
2+	22	22.0	7	23.3	130	13.1	159	
Year of diagnosis								0.065
2000–2003	7	7.0	0.0		117	11.8	124	

Table 1 (continued)

Characteristics	Māori		Pacific		Others		Total N	Chi square test (p value)
	N	%	N	%	N	%		
2004–2006	18	18.0	11	36.7	239	24.0	268	
2007–2009	32	32.0	11	36.7	284	28.5	327	
2010–2013	43	43.0	8	26.7	355	35.7	406	
Group 3 (HER2+, not overexpressing)								
Cancer stage								0.052
Stage I	29	29.3	15	23.4	247	35.5	291	
Stage II	42	42.4	24	37.5	284	40.9	350	
Stage III	28	28.3	25	39.1	164	23.6	217	
Cancer grade								0.963
Grade 1	5	5.2	2	3.2	37	5.4	44	
Grade 2	46	47.4	31	50.0	325	47.8	402	
Grade 3	46	47.4	29	46.8	318	46.8	393	
Unknown	2		2		15		19	
Age (years)								0.002
<50	43	43.4	37	57.8	266	38.3	346	
50–69	52	52.5	24	37.5	334	48.1	410	
70+	4	4.0	3	4.7	95	13.7	102	
C3 score								0.197
0	80	80.8	50	78.1	578	83.2	708	
1	13	13.1	6	9.4	50	7.2	69	
2+	6	6.1	8	12.5	67	9.6	81	
Year of diagnosis								0.513
2000–2003	11	11.1	7	10.9	115	16.5	133	
2004–2006	22	22.2	11	17.2	155	22.3	188	
2007–2009	31	31.3	20	31.3	179	25.8	230	
2010–2013	35	35.4	26	40.6	246	35.4	307	
Group 4 (HER2+ overexpressing)								
Cancer stage								<0.001
Stage I	9	15.0	13	16.7	146	32.4	168	
Stage II	18	30.0	36	46.2	167	37.0	221	
Stage III	33	55.0	29	37.2	138	30.6	200	
Cancer grade								0.801
Grade 1	0	0.0	0	0.0	5	1.1	5	
Grade 2	11	19.0	16	21.1	86	19.8	113	
Grade 3	47	81.0	60	78.9	344	79.1	451	
Unknown	2		2		16		20	
Age (years)								<0.001
<50	33	55.0	41	52.6	141	31.3	215	
50–69	26	43.3	27	34.6	260	57.6	313	
70+	1	1.7	10	12.8	50	11.1	61	
C3 score								0.047
0	43	71.7	61	78.2	366	81.2	470	
1	5	8.3	4	5.1	43	9.5	52	
2+	12	20.0	13	16.7	42	9.3	67	
Year of diagnosis								0.674
2000–2003	11	18.3	10	12.8	70	15.5	91	
2004–2006	16	26.7	20	25.6	121	26.8	157	
2007–2009	20	33.3	25	32.1	118	26.2	163	
2010–2013	13	21.7	23	29.5	142	31.5	178	

Table 1 (continued)

Characteristics	Māori		Pacific		Others		Total N	Chi square test (p value)
	N	%	N	%	N	%		
Group 5 (triple negative)								
Cancer stage								0.035
Stage I	20	26.0	9	18.4	347	35.2	376	
Stage II	36	46.8	28	57.1	459	46.6	523	
Stage III	21	27.3	12	24.5	180	18.3	213	
Cancer grade								0.037
Grade 1	1	1.4	1	2.2	21	2.2	23	
Grade 2	21	28.4	14	30.4	167	17.3	202	
Grade 3	52	70.3	31	67.4	780	80.6	863	
Unknown	3		3		18		24	
Age (years)								0.065
<50	28	36.4	17	34.7	335	34.0	380	
50-69	44	57.1	24	49.0	456	46.2	524	
70+	5	6.5	8	16.3	195	19.8	208	
C3 score								<0.001
0	51	66.2	32	65.3	814	82.6	897	
1	11	14.3	8	16.3	69	7.0	88	
2+	15	19.5	9	18.4	103	10.4	127	
Year of diagnosis								0.631
2000–2003	14	18.2	10	20.4	151	15.3	175	
2004–2006	16	20.8	11	22.4	261	26.5	288	
2007–2009	20	26.0	14	28.6	304	30.8	338	
2010–2013	27	35.1	14	28.6	270	27.4	311	
Total	891		548		7,576		9,015	

result from multiple, often small, but cumulative inequities which occur along the cancer treatment pathway [31]. Previous New Zealand studies have looked at the impact of commonly measured biomarkers (ER/PR and HER2) individually instead of different biomarker combinations [18, 19, 32]. This study has highlighted the differences in recognised biomarker combinations in Māori and Pacific women.

Pacific women were less likely to be diagnosed with triple negative breast cancer (Group 5) but were more likely to be diagnosed with HER2+ overexpressing cancer (Group 4) compared to others (8.9 vs. 13.0%, and 14.2 vs. 6.0%). A US study demonstrated consistent results but with a smaller difference: 10.6% of Pacific Islanders and 11.3% of Whites having triple negative breast cancer, 10.6% of Pacific Islanders and 5.6% of Whites having ER-, PR- and HER2+ breast cancer [33]. Māori were as likely to have triple negative breast cancer as Pacific women, and were as likely to have ER-, PR- and HER2+ breast cancer as others.

Differences in subtype distribution by ethnic group may be related to the genetic factors, environment, diet, obesity and hormone exposure including oral contraceptive use and hormone replacement therapy [34–38]. Triple negative subtype breast cancer is associated with specific DNA

methylation profile [37], which may explain the ethnic difference in having triple negative subtype breast cancer. Another reason may be the difference in number of pregnancies a woman has had. Māori and Pacific women in New Zealand tend to have more pregnancies than others [39]. A Norway study indicated that increasing parity was inversely associated with triple negative cancer (Group 5), though the result was not significant (OR 0.70, 95% CI 0.41–1.21) [34]. The risk of having HER2+ overexpressing cancer (Group 4) was found to increase with increasing waist size before menopause, and increased in association with metabolic syndrome in postmenopausal women [35]. The 2015/16 New Zealand Health Survey shown that 47% of Māori adults and 67% of Pacific adults were obese, [40] which may have contributed to the higher risk of having HER2+ overexpressing cancer (Group 4).

Our previous study showed that the probability of receiving trastuzumab decreased with age and comorbidities score, and increased with cancer stage and grade [41]. In this analysis, we found the discrepancy by ethnicity after adjustment for these variables (Table 3). It is worrying that the adjusted HR for Māori women with HER2+ disease is double that of others. The disparity in the use

Table 2 Treatment by ethnicity in the five subtypes

Subtype group	Māori		Pacific		Others		Chi-square test (p value)
	N	%	N	%	N	%	
Group 1 (ER+, PR+, and HER2-)							
Endocrine therapy	439	79.1	253	77.4	3,246	73.0	0.003
Chemotherapy	149	26.8	107	32.7	1,034	23.2	<0.001
Trastuzumab	-	-	-	-	-	-	-
Group 2 (mixed ER/PR, HER2-)							
Endocrine therapy	76	76.0	21	70.0	753	75.7	0.771
Chemotherapy	36	36.0	16	53.3	311	31.3	0.027
Trastuzumab	-	-	-	-	-	-	-
Group 3 (HER2+, not overexpressing)							
Endocrine therapy	93	93.9	57	89.1	603	86.8	0.119
Chemotherapy	71	71.7	43	67.2	449	64.6	0.364
Trastuzumab	52	52.5	34	53.1	378	54.4	0.929
Group 4 (HER2+ overexpressing)							
Endocrine therapy	-	-	-	-	-	-	-
Chemotherapy	50	83.3	47	60.3	349	77.4	0.002
Trastuzumab	35	58.3	35	44.9	284	63.0	0.010
Group 5 (triple negative)							
Endocrine therapy	-	-	-	-	-	-	-
Chemotherapy	59	76.6	28	57.1	672	68.2	0.071
Trastuzumab	-	-	-	-	-	-	-

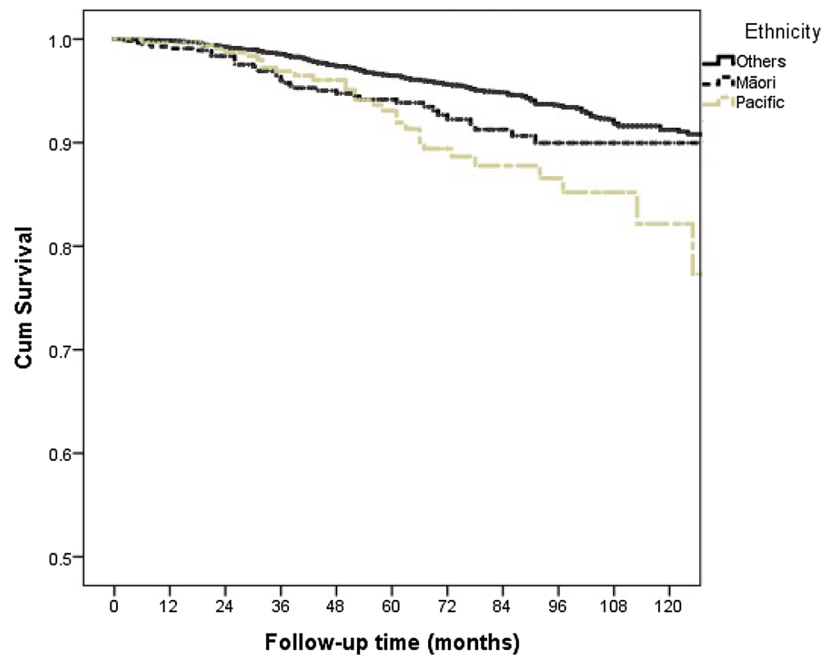
Endocrine therapy is usually provided to patients with hormone receptor-positive cancers, and trastuzumab is provided to patients with HER2 positive cancers

Table 3 Odds ratios of receiving endocrine therapy, chemotherapy and trastuzumab after adjustment for age, year of diagnosis, cancer stage, cancer grade and C3 score

Subtype group	Māori vs. others (ref)		Pacific vs. others (ref)	
	Odds ratio (95% CI)	p value	Odds ratio (95% CI)	p value
Group 1 (ER+, PR+, and HER2-)				
Endocrine therapy	1.21 (0.94–1.56)	0.147	0.81 (0.59–1.12)	0.211
Chemotherapy	0.80 (0.59–1.08)	0.150	0.51 (0.35–0.75)	<0.001
Trastuzumab	-	-	-	-
Group 2 (Mixed ER/PR, HER2-)				
Endocrine therapy	1.15 (0.65–2.05)	0.635	0.47 (0.18–1.19)	0.111
Chemotherapy	0.86 (0.45–1.64)	0.646	0.65 (0.20–2.13)	0.480
Trastuzumab	-	-	-	-
Group 3 (HER2+, not overexpressing)				
Endocrine therapy	2.44 (0.95–6.28)	0.064	1.31 (0.53–3.25)	0.559
Chemotherapy	0.80 (0.45–1.42)	0.443	0.31 (0.14–0.69)	0.004
Trastuzumab	0.48 (0.27–0.84)	0.011	0.24 (0.11–0.51)	<0.001
Group 4 (HER2+ overexpressing)				
Endocrine therapy	-	-	-	-
Chemotherapy	0.77 (0.32–1.85)	0.555	0.19 (0.10–0.37)	<0.001
Trastuzumab	0.48 (0.23–1.00)	0.048	0.19 (0.10–0.36)	<0.001
Group 5 (triple negative)				
Endocrine therapy	-	-	-	-
Chemotherapy	1.33 (0.65–2.72)	0.440	0.40 (0.18–0.89)	0.024
Trastuzumab	-	-	-	-

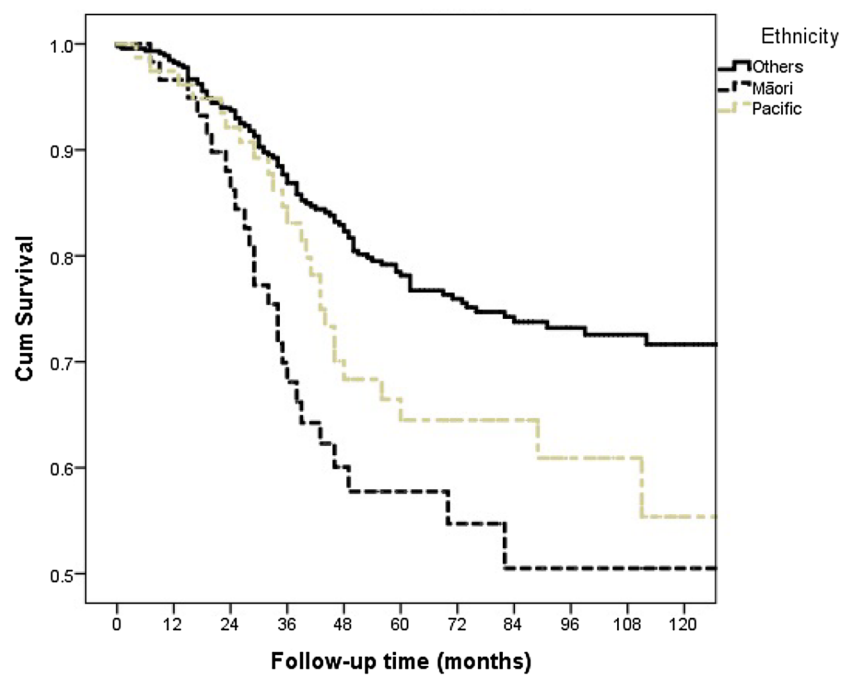
Endocrine therapy is usually provided to patients with hormone receptor-positive cancers, and trastuzumab is provided to patients with HER2 positive cancers

Fig. 1 Breast cancer-specific survival for women with ER+, PR+ and HER2- (Group 1) stage I-III breast cancer by ethnicity



Follow-up time (months)	0	12	24	36	48	60	72	84	96	108	120	
Number of women at risk	Others	4449	4423	4150	3554	2986	2482	1996	1527	1139	774	478
	Māori	555	545	499	414	353	288	217	151	115	77	37
	Pacific	327	324	295	246	213	164	124	84	66	37	20

Fig. 2 Breast cancer-specific survival for women with ER-, PR- and HER2+ (Group 4) stage I-III breast cancer by ethnicity



Follow-up time (months)	0	12	24	36	48	60	72	84	96	108	120	
Number of women at risk	Others	451	444	396	329	273	228	189	155	119	87	63
	Māori	60	57	49	38	26	22	18	11	8	6	3
	Pacific	78	76	67	54	41	34	29	24	14	11	5

Table 4 Hazard ratio in breast cancer-specific mortality after adjustment for age, year of diagnosis, stage, grade and treatment

Subtype group	Unadjusted hazard ratio (95% CI)		Adjusted hazard ratio (95% CI)		Adjusted treatments
	Māori vs. others (ref)	Pacific vs. others (ref)	Māori vs. others (ref)	Pacific vs. others (ref)	
Group 1 (ER+, PR+, and HER2−)	1.61 (1.13–2.28)	2.19 (1.49–3.24)	1.52 (1.06–2.18)	1.55 (1.04–2.31)	E, C
Group 2 (Mixed ER/PR, HER2−)	0.88 (0.47–1.62)	1.44 (0.63–3.26)	0.98 (0.51–1.88)	1.11 (0.48–2.58)	E, C
Group 3 (HER2+, not overexpressing)	1.59 (0.96–2.64)	1.47 (0.78–2.75)	2.10 (1.22–3.61)	1.51 (0.74–3.09)	E, C, T
Group 4 (HER2+ overexpressing)	2.26 (1.46–3.52)	1.58 (1.02–2.45)	2.06 (1.29–3.29)	1.21 (0.74–1.99)	C, T
Group 5 (Triple negative)	0.81 (0.46–1.41)	0.95 (0.50–1.78)	0.76 (0.43–1.34)	0.86 (0.45–1.64)	C

E endocrine therapy, C chemotherapy, T trastuzumab

of an effective and expensive treatment in Māori women with HER2+ disease linked to evidence of substantially poor outcomes is of concern and requires further research.

In women with ER+, PR+ and HER2− (Group 1) breast cancer, Māori and Pacific women had worse breast cancer-specific survival than others, although in the three ethnic groups overall breast cancer-specific survival is very good. Women with ER+, PR+ and HER2− breast cancer are mainly treated with endocrine therapy. While in this study Māori and Pacific women with ER+ breast cancer are just as likely to receive endocrine therapy, in a previous study we noted poorer adherence to endocrine therapy in Māori women compared to others, and this was shown to be associated with worse breast cancer outcome [9].

The strengths of this study include that this study is based on the Waikato and Auckland population-based Breast Cancer Registers that collect good quality data on all breast cancer patients [23]. We have comprehensive data on patient characteristics, patient treatment as well as outcomes. One weakness is that in earlier years not all women had their biomarkers tested, especially HER2 status. Consequently, there may be differences in the distribution of subtypes (e.g. by age and stage) in earlier years in this study. Also there may be some differences in treatment over time with increasing use of trastuzumab and changes of the regimens of chemotherapy. However, in the Cox proportional hazard models we have adjusted age, year of diagnosis, stage, grade and treatment.

Conclusion

This study does give us some indications that outcomes for Māori and Pacific women could be improved by better uptake of treatment, especially for those with HER2+ breast cancer. There are also differences in outcomes for Māori and Pacific women with ER+, PR+ and HER2− cancer. When treatment is increasingly targeted to patient characteristics including hormonal status, it is

important to ensure treatment is equally delivered to high need Māori and Pacific women.

Acknowledgments We would like to acknowledge the financial support from the Health Research Council of New Zealand, the Auckland and Waikato Breast Cancer Registers for providing the detailed data.

Compliance with Ethical Standards

Conflict of interest The authors declare that they have no conflict of interest.

References

1. Seneviratne SA, Campbell ID, Scott N, Lawrenson RA, Shirley R, Elwood JM (2015) Risk factors associated with mortality from breast cancer in Waikato, New Zealand: a case-control study. *Public Health* 129(5):549–554. doi:10.1016/j.puhe.2015.02.008
2. Parise CA, Caggiano V (2014) Breast cancer survival defined by the er/pr/her2 subtypes and a surrogate classification according to tumor grade and immunohistochemical biomarkers. *J Cancer Epidemiol*. doi:10.1155/2014/469251
3. Li X, Yang J, Peng L, Sahin AA, Huo L, Ward KC, O'Regan R, Torres MA, Meisel JL (2017) Triple-negative breast cancer has worse overall survival and cause-specific survival than non-triple-negative breast cancer. *Breast Cancer Res Treat* 161(2):279–287. doi:10.1007/s10549-016-4059-6
4. Haffty BG, Yang Q, Reiss M, Kearney T, Higgins SA, Weidhaas J, Harris L, Hait W, Toppmeyer D (2006) Locoregional relapse and distant metastasis in conservatively managed triple negative early-stage breast cancer. *J Clin Oncol* 24(36):5652–5657. doi:10.1200/JCO.2006.06.5664
5. Onitilo AA, Engel JM, Greenlee RT, Mukesh BN (2009) Breast cancer subtypes based on ER/PR and Her2 expression: comparison of clinicopathologic features and survival. *Clin Med Res* 7(1–2):4–13. doi:10.3121/cm.2009.825
6. Goldhirsch A, Winer EP, Coates AS, Gelber RD, Piccart-Gebhart M, Thürlimann B, Senn HJ, Albain KS, André F, Bergh J, Bonnefoi H, Bretel-Morales D, Burstein H, Cardoso F, Castiglione-Gertsch M, Coates AS, Colleoni M, Costa A, Curigliano G, Davidson NE, Leo AD, Ejlertsen B, Forbes JF, Gelber RD, Gnant M, Goldhirsch A, Goodwin P, Goss PE, Harris JR, Hayes DF, Hudis CA, Ingle JN, Jassem J, Jiang Z, Karlsson P, Loibl S, Morrow M, Namer M, Osborne CK, Partridge AH, Penault-Llorca F, Perou CM, Piccart-Gebhart MJ, Pritchard KI, Rutgers EJT, Sedlmayer F, Semiglazov V, Shao ZM, Smith I, Thürlimann B,

- Toi M, Tutt A, Untch M, Viale G, Watanabe T, Wilcken N, Winer EP, Wood WC (2013) Personalizing the treatment of women with early breast cancer: highlights of the St Gallen international expert consensus on the primary therapy of early breast cancer 2013. *Ann Oncol* 24(9):2206–2223. doi:10.1093/annonc/mdt303
7. Carey LA, Dees EC, Sawyer L, Gatti L, Moore DT, Collichio F, Ollila DW, Sartor CI, Graham ML, Perou CM (2007) The triple negative paradox: primary tumor chemosensitivity of breast cancer subtypes. *Clin Cancer Res* 13(8):2329–2334. doi:10.1158/1078-0432.CCR-06-1109
 8. Slamon D, Eiermann W, Robert N, Pienkowski T, Martin M, Press M (2011) Breast Cancer International Research Group. Adjuvant trastuzumab in HER2-positive breast cancer. *N Engl J Med* 365
 9. Seneviratne S, Campbell I, Scott N, Kuper-Hommel M, Kim B, Pillai A, Lawrenson R (2015) Adherence to adjuvant endocrine therapy: is it a factor for ethnic differences in breast cancer outcomes in New Zealand? *Breast* 24(1):62–67. doi:10.1016/j.breast.2014.11.011
 10. Metcalfe S, Evans J, Priest G (2007) PHARMAC funding of 9-week concurrent trastuzumab (Herceptin) for HER2-positive early breast cancer. *N Z Med J* 120:(1256)
 11. New Zealand Herald (2008) National would fund year of Herceptin. http://www.nzherald.co.nz/nz/news/article.cfm?c_id=1&objectid=10524525
 12. Chen L, Li CI (2015) Racial disparities in breast cancer diagnosis and treatment by hormone receptor and HER2 status. *Cancer Epidemiol Biomarkers Prev* 24(11):1666–1672. doi:10.1158/1055-9965.epi-15-0293
 13. Parise C, Caggiano V (2016) Breast cancer mortality among Asian-American women in California: variation according to ethnicity and tumor subtype. *J Breast Cancer* 19(2):112–121. doi:10.4048/jbc.2016.19.2.112
 14. National Population Estimates: At 30 June 2016 (2016) http://www.stats.govt.nz/browse_for_stats/population/estimates_and_projections/NationalPopulationEstimates_HOTPA30Jun16.aspx
 15. Ministry of Health (2015) Tatau Kahukura: Māori health statistics. <http://www.health.govt.nz/our-work/populations/maori-health/tatau-kahukura-maori-health-statistics/nga-mana-hauora-tutohu-health-status-indicators/cancer>
 16. Earle D (1995) Pacific Islands peoples in Aotearoa/New Zealand: existing and emerging paradigms. Wellington
 17. Campbell I, Scott N, Seneviratne S, Kollias J, Walters D, Taylor C, Roder D (2015) Breast cancer characteristics and survival differences between Maori, Pacific and other New Zealand women included in the quality audit program of breast surgeons of Australia and New Zealand. *Asian Pac J Cancer Prev* 16(6):2465–2472. doi:10.7314/APJCP.2015.16.6.2465
 18. Davey V, Robinson B, Dijkstra B, Harris G (2012) The Christchurch Breast Cancer Patient Register: the first year. *N Z Med J* 125(1360):37–47
 19. Seneviratne S, Lawrenson R, Scott N, Kim B, Shirley R, Campbell I (2015) Breast cancer biology and ethnic disparities in breast cancer mortality in New Zealand: a cohort study. *PLoS ONE* 10(4). doi:10.1371/journal.pone.0123523
 20. Lawrenson R, Seneviratne S, Scott N, Peni T, Brown C, Campbell I (2016) Breast cancer inequities between Maori and non-Maori women in Aotearoa/New Zealand. *Eur J Cancer Care* 25(2):225–230. doi:10.1111/ecc.12473
 21. Seneviratne S, Campbell I, Scott N, Coles C, Lawrenson R (2015) Treatment delay for Māori women with breast cancer in New Zealand. *Ethn Health* 20(2):178–193. doi:10.1080/13557858.2014.895976
 22. Seneviratne S, Scott N, Lawrenson R, Campbell I (2015) Ethnic, socio-demographic and socio-economic differences in surgical treatment of breast cancer in New Zealand. *ANZ J Surg*. doi:10.1111/ans.13011
 23. Seneviratne S, Campbell I, Scott N, Shirley R, Peni T, Lawrenson R (2014) Accuracy and completeness of the New Zealand Cancer Registry for staging of invasive breast cancer. *Cancer Epidemiol* 38(5):638–644. doi:10.1016/j.canep.2014.06.008
 24. Tin ST, Elwood JM, Lawrenson R, Campbell I, Harvey V, Seneviratne S (2016) Differences in breast cancer survival between public and private care in New Zealand: which factors contribute? *PLoS ONE*. doi:10.1371/journal.pone.0153206
 25. Sarfati D, Gurney J, Stanley J, Salmond C, Crampton P, Dennett E, Koea J, Pearce N (2014) Cancer-specific administrative data-based comorbidity indices provided valid alternative to Charlson and National Cancer Institute Indices. *J Clin Epidemiol* 67(5):586–595. doi:10.1016/j.jclinepi.2013.11.012
 26. Goldhirsch A, Wood WC, Coates AS, Gelber RD, Thürlimann B, Senn HJ (2011) Strategies for subtypes-dealing with the diversity of breast cancer: highlights of the St Gallen international expert consensus on the primary therapy of early breast cancer 2011. *Ann Oncol* 22(8):1736–1747. doi:10.1093/annonc/mdr304
 27. Arvold ND, Taghian AG, Niemierko A, Abi Raad RF, Sreedhara M, Nguyen PL, Bellon JR, Wong JS, Smith BL, Harris JR (2011) Age, breast cancer subtype approximation, and local recurrence after breast-conserving therapy. *J Clin Oncol* 29(29):3885–3891. doi:10.1200/JCO.2011.36.1105
 28. Von Minckwitz G, Untch M, Blohmer JU, Costa SD, Eidtmann H, Fasching PA, Gerber B, Eiermann W, Hilfrich J, Huober J, Jackisch C, Kaufmann M, Konecny GE, Denkert C, Nekljudova V, Mehta K, Loibl S (2012) Definition and impact of pathologic complete response on prognosis after neoadjuvant chemotherapy in various intrinsic breast cancer subtypes. *J Clin Oncol* 30(15):1796–1804. doi:10.1200/JCO.2011.38.8595
 29. Kwan ML, Kushi LH, Weltzien E, Maring B, Kutner SE, Fulton RS, Lee MM, Ambrosone CB, Caan BJ (2009) Epidemiology of breast cancer subtypes in two prospective cohort studies of breast cancer survivors. *Breast Cancer Res*. doi:10.1186/bcr2261
 30. Huober J, Von Minckwitz G, Denkert C, Tesch H, Weiss E, Zahm DM, Belau A, Khandan F, Hauschild M, Thomssen C, Högel B, Darb-Esfahani S, Mehta K, Loibl S (2010) Effect of neoadjuvant anthracycline-taxane-based chemotherapy in different biological breast cancer phenotypes: overall results from the GeparTrio study. *Breast Cancer Res Treat* 124(1):133–140. doi:10.1007/s10549-010-1103-9
 31. Seneviratne S, Campbell I, Scott N, Shirley R, Peni T, Lawrenson R (2015) Ethnic differences in breast cancer survival in New Zealand: contributions of differences in screening, treatment, tumor biology, demographics and comorbidities. *Cancer Causes Control* 26(12):1813–1824. doi:10.1007/s10552-015-0674-5
 32. Seneviratne S, Lawrenson R, Harvey V, Ramsaroop R, Elwood M, Scott N, Sarfati D, Campbell I (2016) Stage of breast cancer at diagnosis in New Zealand: impacts of socio-demographic factors, breast cancer screening and biology. *BMC Cancer* 16(1). doi:10.1186/s12885-016-2177-5
 33. Parise C, Caggiano V (2014) Disparities in the risk of the ER/PR/HER2 breast cancer subtypes among Asian Americans in California. *Cancer Epidemiol* 38(5):556–562. doi:10.1016/j.canep.2014.08.001
 34. Ellingjord-Dale M, Vos L, Tretli S, Hofvind S, dos-Santos-Silva I, Ursin G (2017) Parity, hormones and breast cancer subtypes—results from a large nested case-control study in a national screening program. *Breast Cancer Res* 19(1). doi:10.1186/s13058-016-0798-x
 35. Agresti R, Meneghini E, Baili P, Minicozzi P, Turco A, Cavallo I, Funaro F, Amash H, Berrino F, Tagliabue E, Sant M (2016) Association of adiposity, dysmetabolisms, and inflammation with aggressive breast cancer subtypes: a cross-sectional study. *Breast Cancer Res Treat* 157(1):179–189. doi:10.1007/s10549-016-3802-3

36. Cerne JZ, Ferik P, Frkovic-Grazio S, Leskosek B, Gersak K (2012) Risk factors for HR- and HER2-defined breast cancer in Slovenian postmenopausal women. *Climacteric* 15(1):68–74. doi:[10.3109/13697137.2011.609286](https://doi.org/10.3109/13697137.2011.609286)
37. Holm K, Hegardt C, Staaf J, Vallon-Christersson J, Jönsson G, Olsson H, Borg Å, Ringnér M (2010) Molecular subtypes of breast cancer are associated with characteristic DNA methylation patterns. *Breast Cancer Res.* doi:[10.1186/bcr2590](https://doi.org/10.1186/bcr2590)
38. Phipps AI, Chlebowski RT, Prentice R, McTiernan A, Wactawski-Wende J, Kuller LH, Adams-Campbell LL, Lane D, Stefanick ML, Vitolins M, Kabat GC, Rohan TE, Li CI (2011) Reproductive history and oral contraceptive use in relation to risk of triple-negative breast cancer. *J Natl Cancer Inst* 103(6):470–477. doi:[10.1093/jnci/djr030](https://doi.org/10.1093/jnci/djr030)
39. Statistics New Zealand (2011) Demographic Trends: 2011. http://www.stats.govt.nz/browse_for_stats/population/estimates_and_projections/demographic-trends-2011/births.aspx. Accessed 11 September 2017
40. Ministry of Health (2016) Annual update of key results 2015/16: New Zealand Health Survey. Ministry of Health, Wellington
41. Lawrenson R, Lao C, Campbell I, Harvey V, Brown C, Seneviratne S, Edwards M, Elwood M, Kuper-Hommel M (2017) The use of trastuzumab in New Zealand women with breast cancer. *Asia Pac J Clin Oncol.* doi:[10.1111/ajco.12766](https://doi.org/10.1111/ajco.12766)