



# Tohe Ora Wānaga Whenua - Our Partnership



# Introductions and presentation format

- Professor Te Kahautu Maxwell – Welcome and our research partnership
- Mrs Hope Hata – Food security issues facing Te Whakatōhea
- Dr Shannon Davis – Research process and kōrero kāpehu
- Dr Richard Morris – Changing landscapes and future whenua planning
- Short film



Whakatōhea  
Māori Trust Board



LINCOLN  
UNIVERSITY  
TE WHARE WĀHAKA O AORAKI

TE TĀWHARAU O TE  
WHAKATŌHEA



# Te Whakatōhea rohe

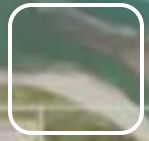


Whakatōhea  
Māori Trust Board



LINCOLN  
UNIVERSITY  
TE WHARE WĀHAKA O AORAKI

TE TĀWHARAU O TE  
WHAKATŌHEA



Ōpōtiki  
town



Whakatōhea  
Māori Trust Board



LINCOLN  
UNIVERSITY  
TE WHARE WĀHAKA O AORAKI

TE TĀWHARAU O TE  
WHAKATŌHEA



# “Ko Te Kai Hoki I Waiaua”

(A whakataukī (proverb) by a Te Whakatōhea ancestor, Tapuikaakahu)

## A Whakatōhea Kai Strategy



"Reminds me of the old people, a time when life was much simpler"

"WHEN WE WERE LIVING OFF THE LAND MY KIDS HEALTH WAS AT IT'S BEST"

"IT'S MANAAKITANGA"

"WE ARE WELL SPIRITUALLY WHEN WE ARE LOOKING AFTER THE WHEIWA THAT LOOKS AFTER US"

"We knew where everything we ate came from"

"IT'S NOT THE SAME, THERE IS SO MUCH FOOD ALLERGIES"

"I GET TO SPEND TIME WITH MY WHĀNAU DOWN THE COAST DOING WHAT WE LOVE, MAHINGA KAI"

"learning to grow food gives you so many skills"

"KAI TO ME IS ABOUT THE MEMORIES WE CREATE TOGETHER"



Whakatōhea  
Māori Trust Board



LINCOLN  
UNIVERSITY  
TE WHARE WĀHAKA O AORAKI

TE TĀWHARAU O TE  
WHAKATŌHEA

# The Vision



*“ To exercise  
Tino Rangatiratanga  
in our pursuit to define our  
local food systems  
through the traditional  
knowledge  
and practice of  
growing kai that will  
inspire and transform  
the health and well-being  
of all Whakatōhea,  
Whānau, Hapū, Iwi. ”*



Whakatōhea  
Māori Trust Board



LINCOLN  
UNIVERSITY  
TE WHARE WĀHAKA O AORAKI

TE TĀWHARAU O TE  
WHAKATŌHEA

# Ā Mātou Tikanga - Our Process



*E hika, Waiū e!*

*I tīpokina te tipuaki*

*Ki te tūpuku karaka;*

*Nō reira te ingoa o Te Oro-karaka.*

*Whakaūria Ngāi Tamahaua*

*Ki te ika i te moana*

*Ki te ngohi rā tēnā*

*I hīa ai kia Tauhe;*

*Nā Taha-manawa i kawē*

*Ki Mou-tohorā.*

*Tēnei hikitia, i komotia ki roto*

*Ki te kōpiha kumara nā Te Peka-whati,*

*Ā he pirau taro tea ohia ana mai ki waho rā ...*

*(A Te Whakatōhea mō teatea (archaic song))*

*O sire Wai!*

*Your head was covered*

*With a kitful of cooked karaka*

*Hence the name Te Oro-karaka.*

*Ngāi Tamahaua were fed*

*Fish from the sea*

*With fish*

*From the fishing of Tauhe*

*Which was taken by Taha-manawa*

*To Mou-tohorā*

*It was lifted up and placed inside*

*The kumara pit of Peka-whati*

*But all that came forth was rotten taro ...*



Whakatōhea  
Māori Trust Board



LINCOLN  
UNIVERSITY  
TE WHARE WĀHAKA O AORAKI

TE TĀWHARAU O TE  
WHAKATŌHEA

# Ā Mātou Tikanga - Our Process

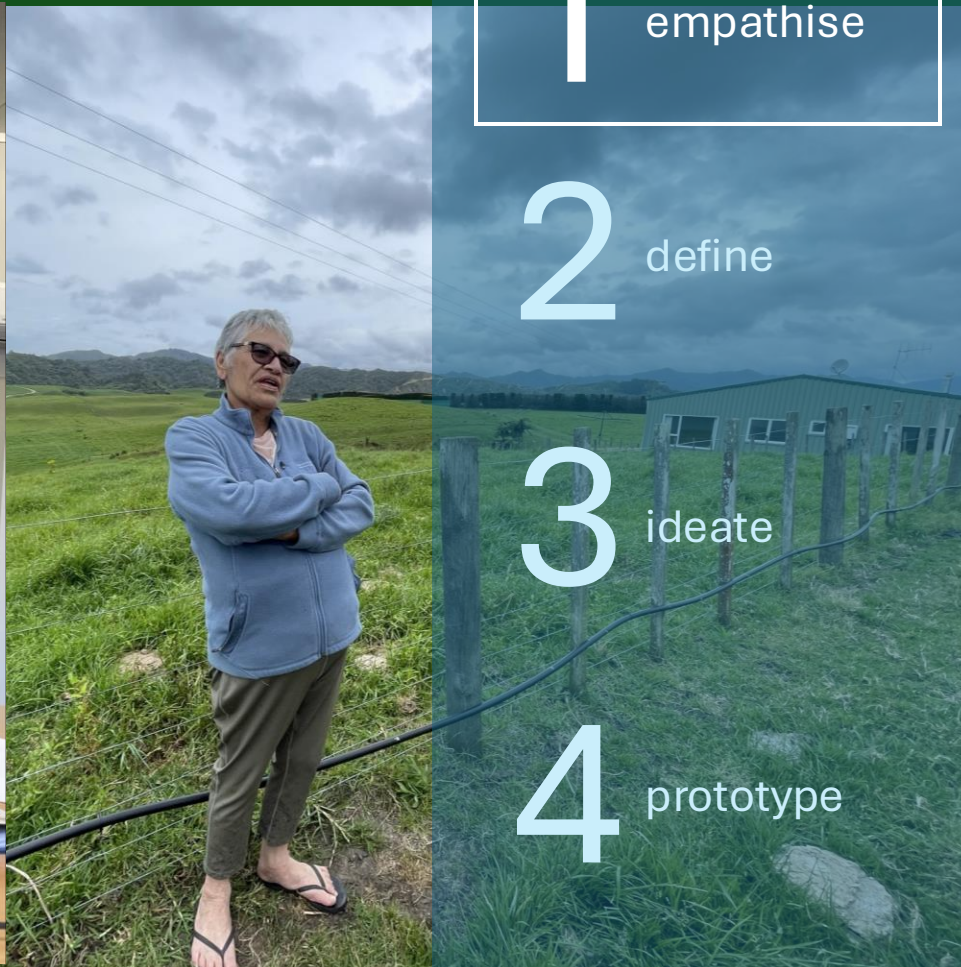
Design Thinking methodology

1 empathise

2 define

3 ideate

4 prototype



# 2 Te Whakaaetanga - Define

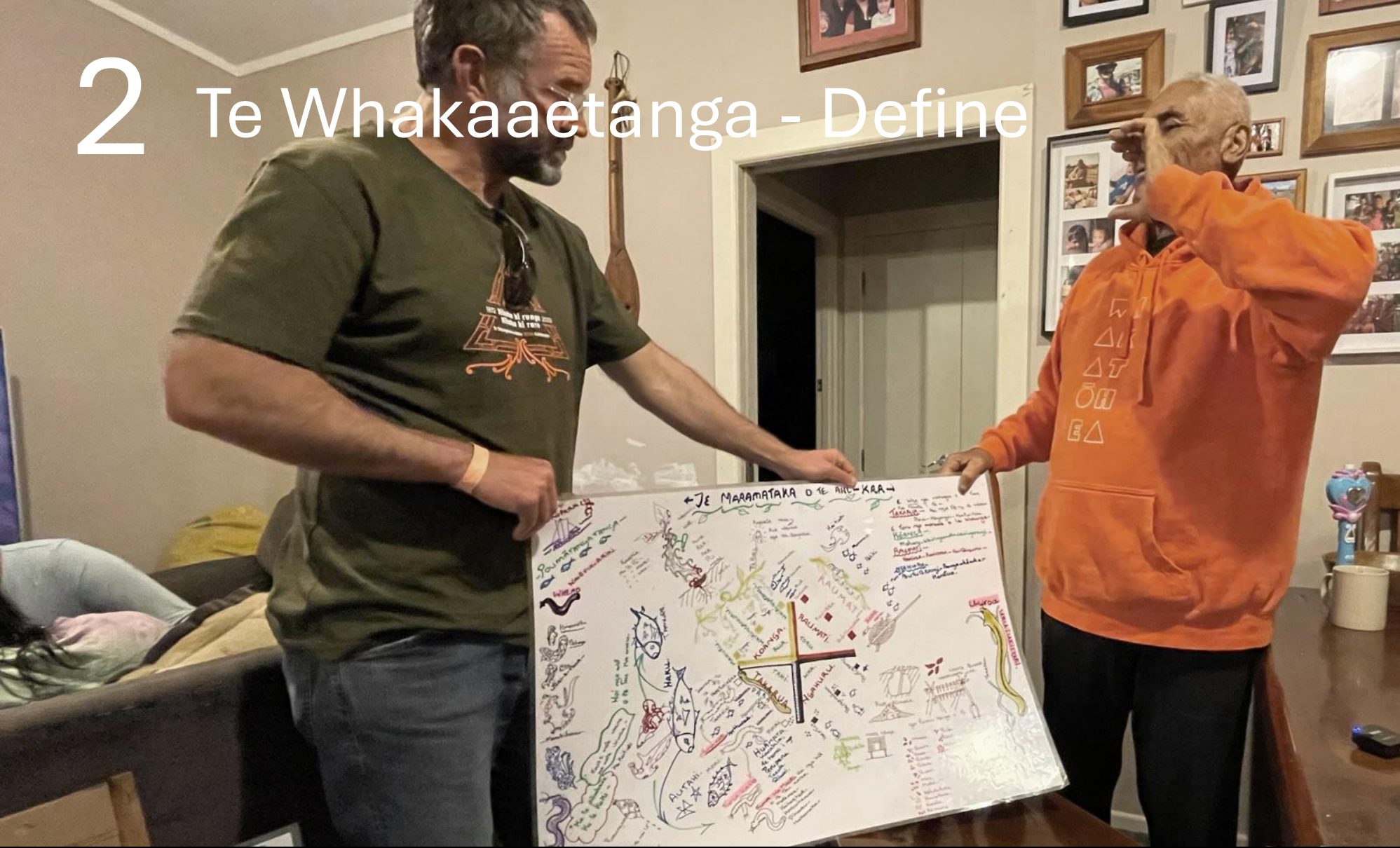
Design Thinking methodology

1 empathise

2 define

3 ideate

4 prototype



# 3 Te Wānanga - Ideate



Design Thinking methodology

1 empathise

2 define

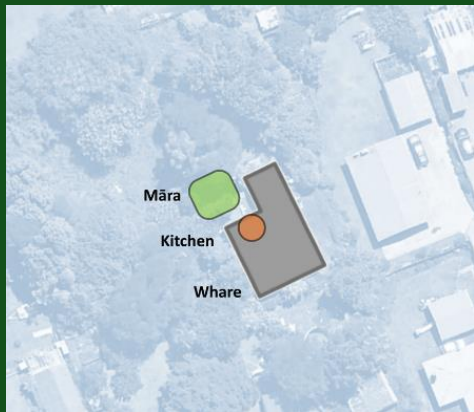
3 ideate

4 prototype

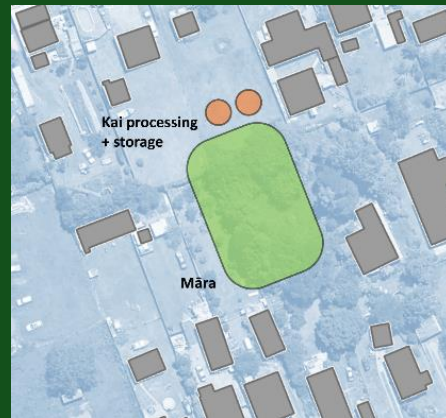


# 4 Te Taura - Prototype

Māra-ā-kainga  
(home garden)



Māra-ā-papakāinga  
(neighbourhood garden)



Māra-ā-iwi  
(community garden)



Design Thinking  
methodology

1 empathise

2 define

3 ideate

4 prototype



Whakatōhea  
Māori Trust Board

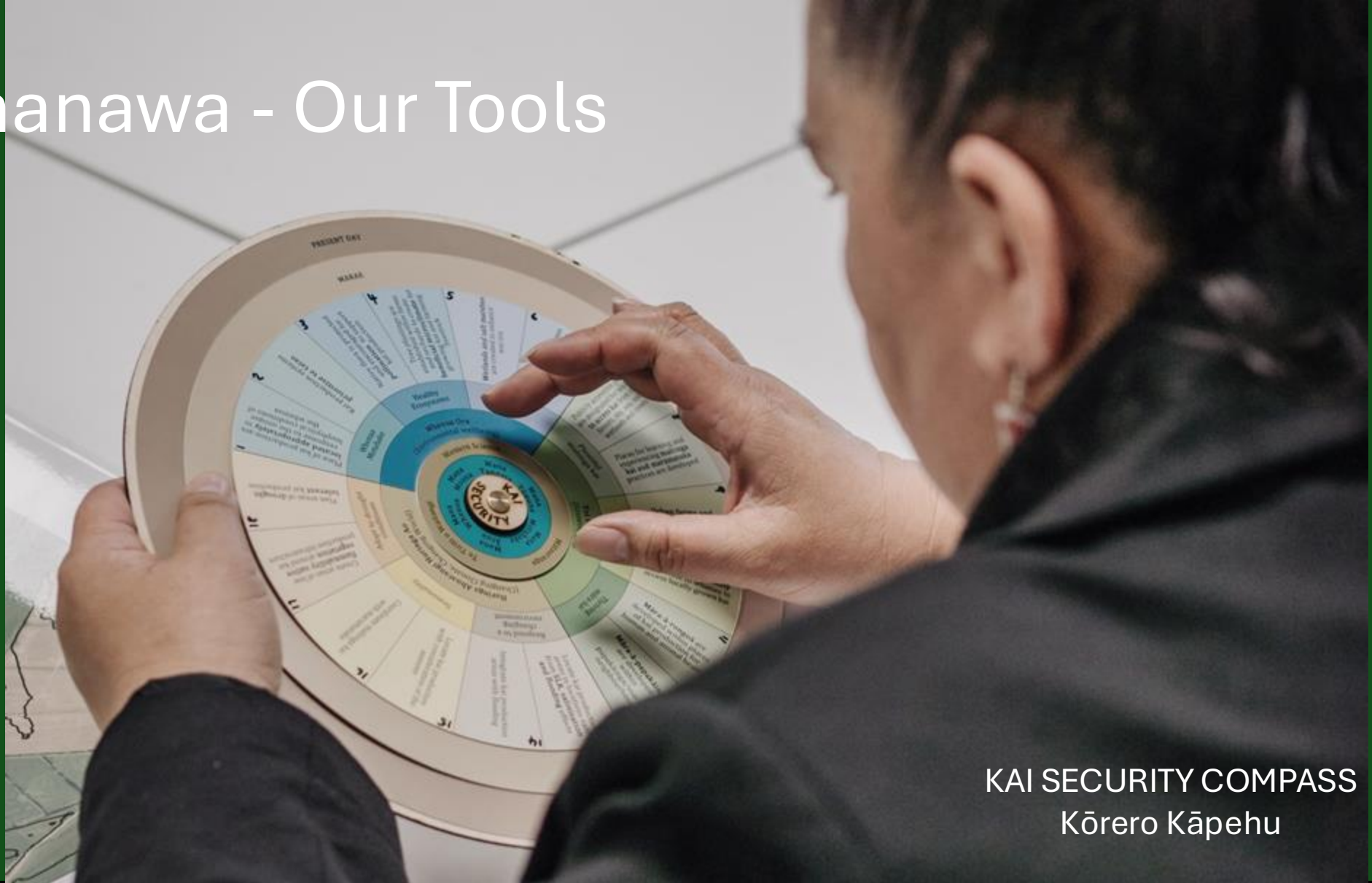


LINCOLN  
UNIVERSITY  
TE WHARE WĀHARA O AORAKI

TE TĀWHARAU O TE  
WHAKATŌHEA



# Ngā Pūmanawa - Our Tools



KAI SECURITY COMPASS  
Kōrero Kāpehu



Whakatōhea  
Māori Trust Board

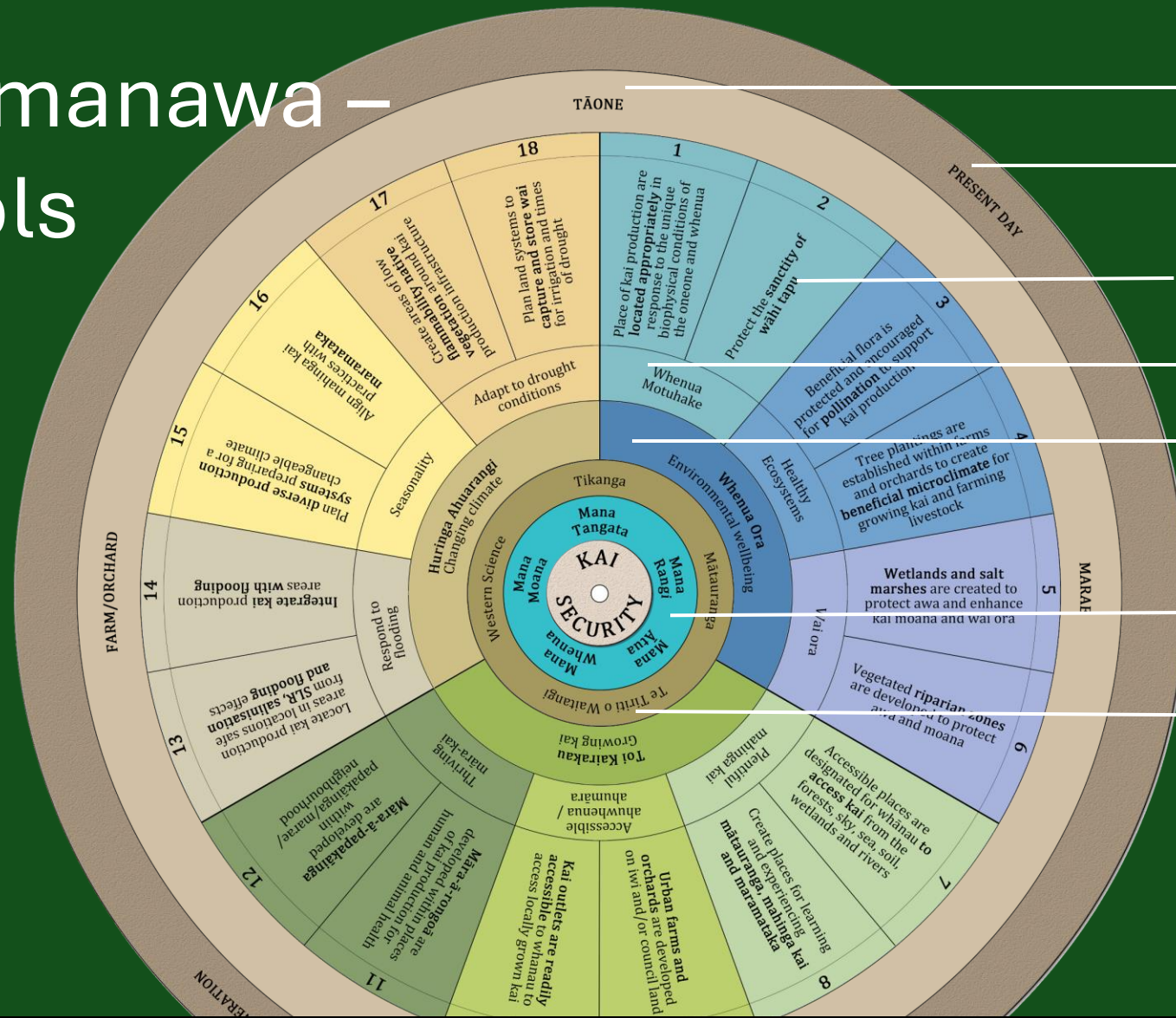


LINCOLN  
UNIVERSITY  
TE WHARE WĀHAKA O AORAKI

TE TĀWHARAU O TE  
WHAKATŌHEA



# Ngā Pūmanawa – Our Tools



Spatial scale

Temporal scale

Targeted objectives

Interconnected goals

Focus principles

Underpinned by tikanga and

Multiple knowledges

Kai Security  
Kāpehu/Compass  
kōrero tool





# Kōrero - conversations



Whakatōhea  
Māori Trust Board



LINCOLN  
UNIVERSITY  
TE WHARE WĀHAKA O AORAKI

TE TĀWHARAU O TE  
WHAKATŌHEA



# Ngā Pūmanawa – Our Tools

## Lens/knowledge system

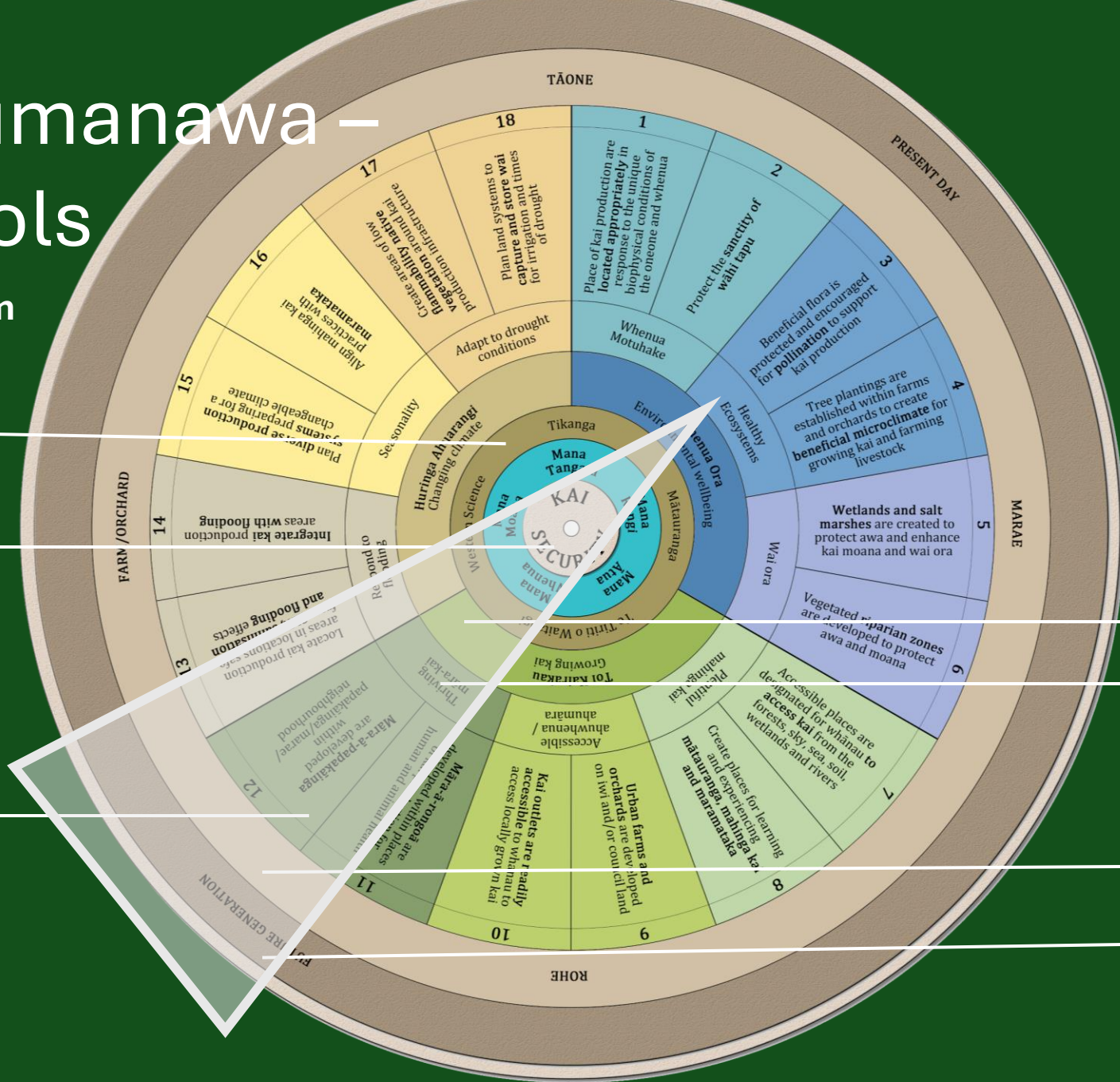
Underpinned by both  
mātauranga Māori and  
western science

## Research focus

Kai (food) security

## Objective

Māra-a-papakāinga  
(community gardens)  
are developed within  
papakāinga/marae/  
neighbourhoods



## Focus principle

Toi kairakau Growing kai

## Goal

Thriving māra-kai

## Spatial scale

Rohe scale

## Temporal scale

Future generations



# Ngā Kitenga - Our Findings



Whakatōhea  
Māori Trust Board



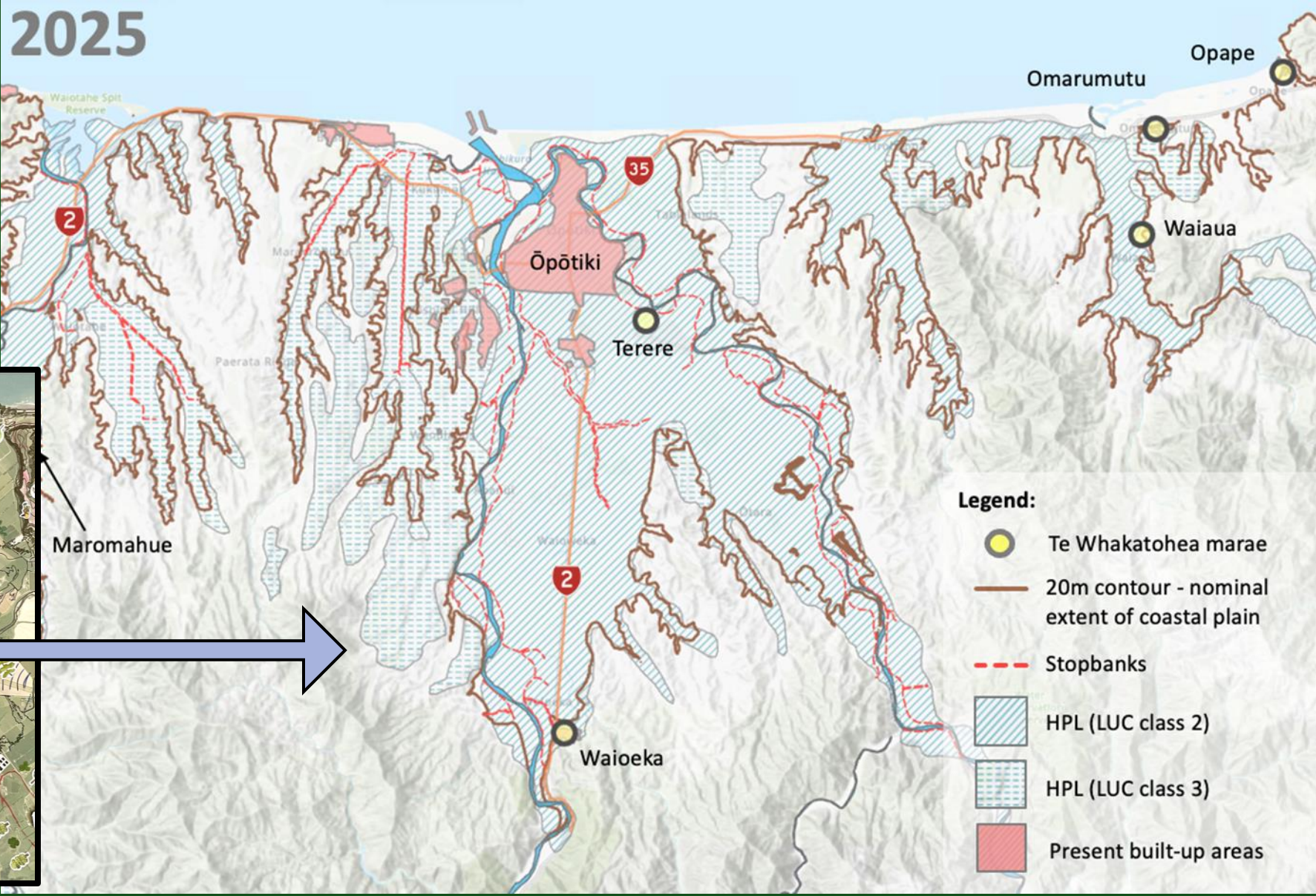
LINCOLN  
UNIVERSITY  
TE WHARE WĀHAKA O AORAKI

TE TĀWHARAU O TE  
WHAKATŌHEA



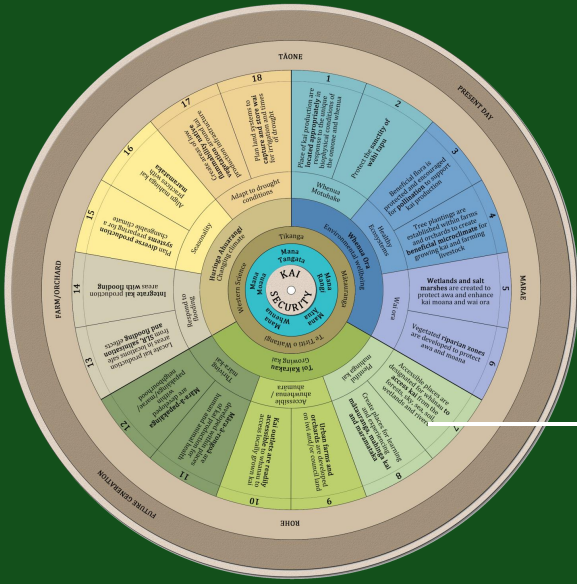
# Ngā Kitenga – Our Findings

2025



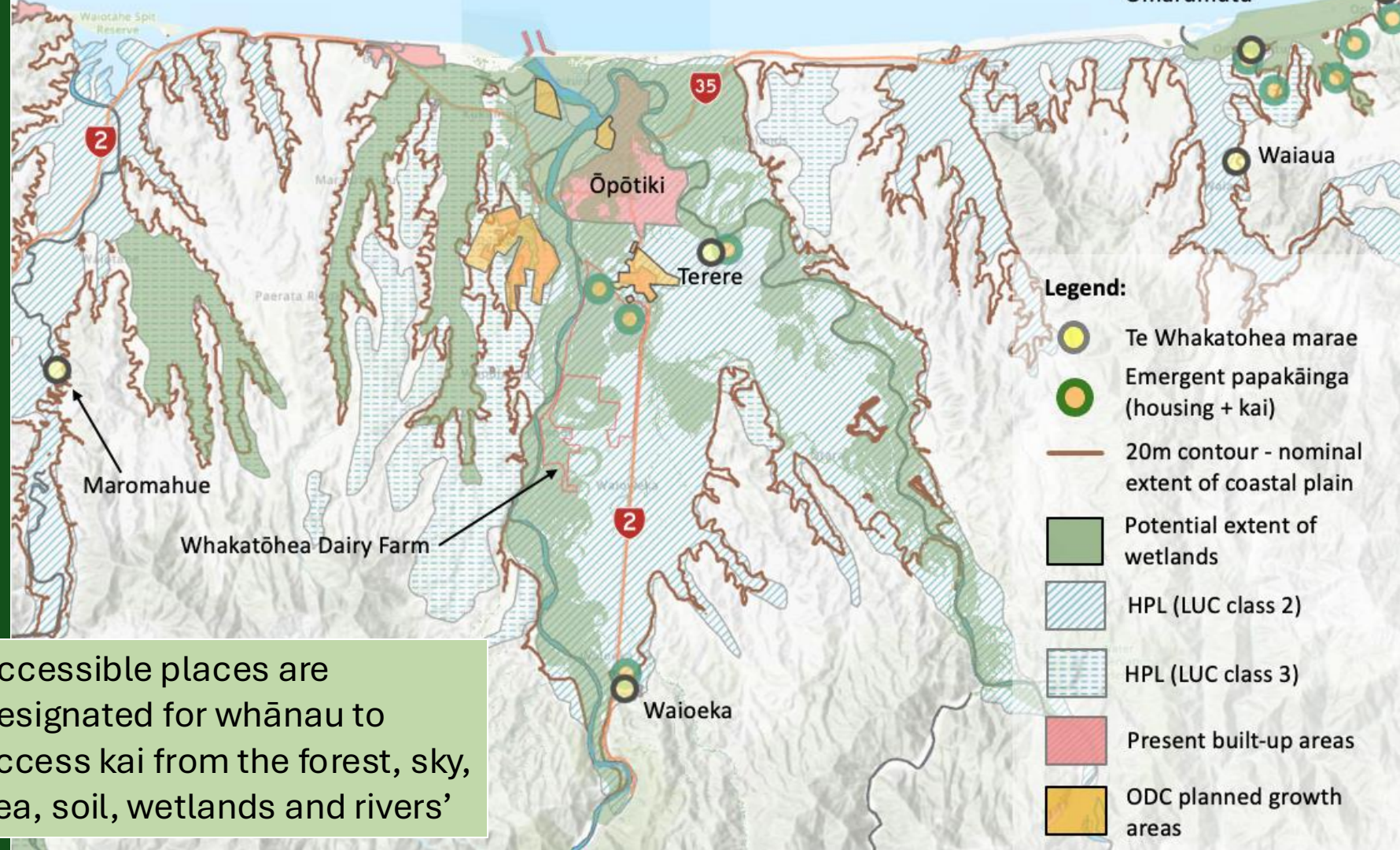


# Ngā Kitenga - Our Findings



Accessible places are designated for whānau to access kai from the forest, sky, sea, soil, wetlands and rivers'

2045

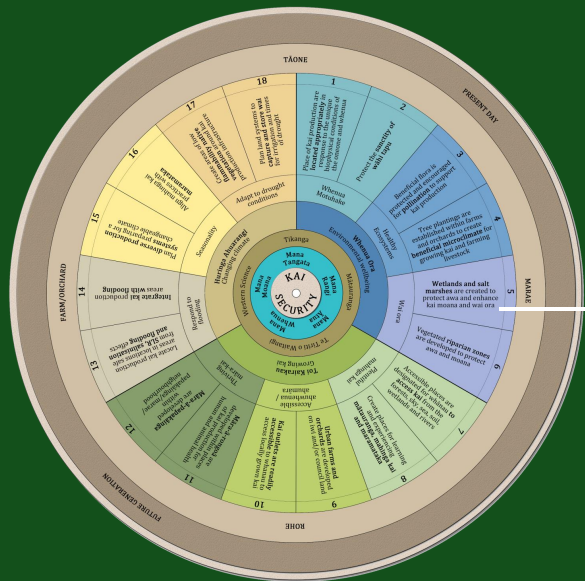


- Legend:**
- Te Whakatohea marae
  - Emergent papakāinga (housing + kai)
  - 20m contour - nominal extent of coastal plain
  - Potential extent of wetlands
  - HPL (LUC class 2)
  - HPL (LUC class 3)
  - Present built-up areas
  - ODC planned growth areas



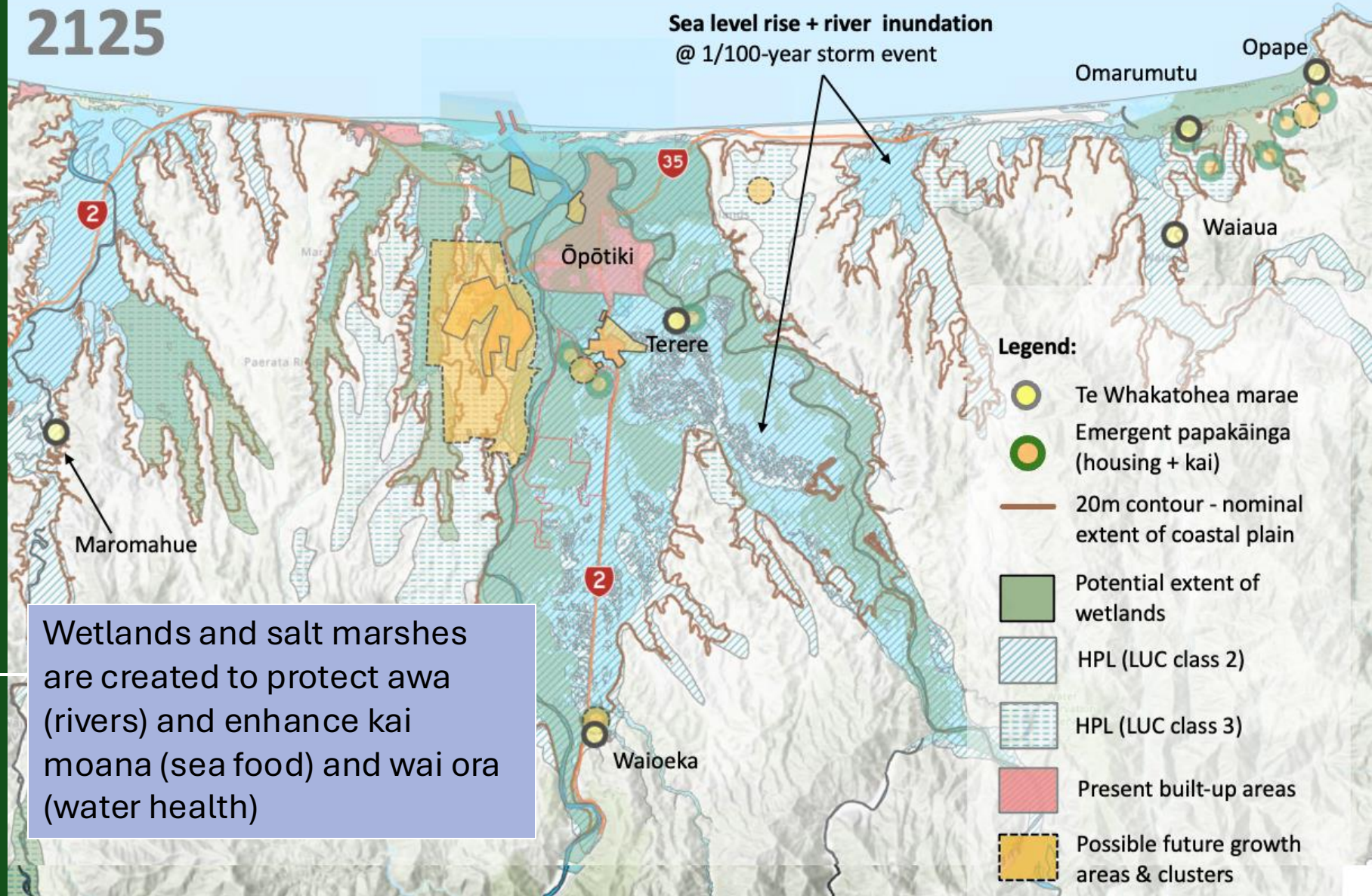


# Ngā Kitenga - Our Findings



2125

Sea level rise + river inundation  
@ 1/100-year storm event



Wetlands and salt marshes are created to protect awa (rivers) and enhance kai moana (sea food) and wai ora (water health)

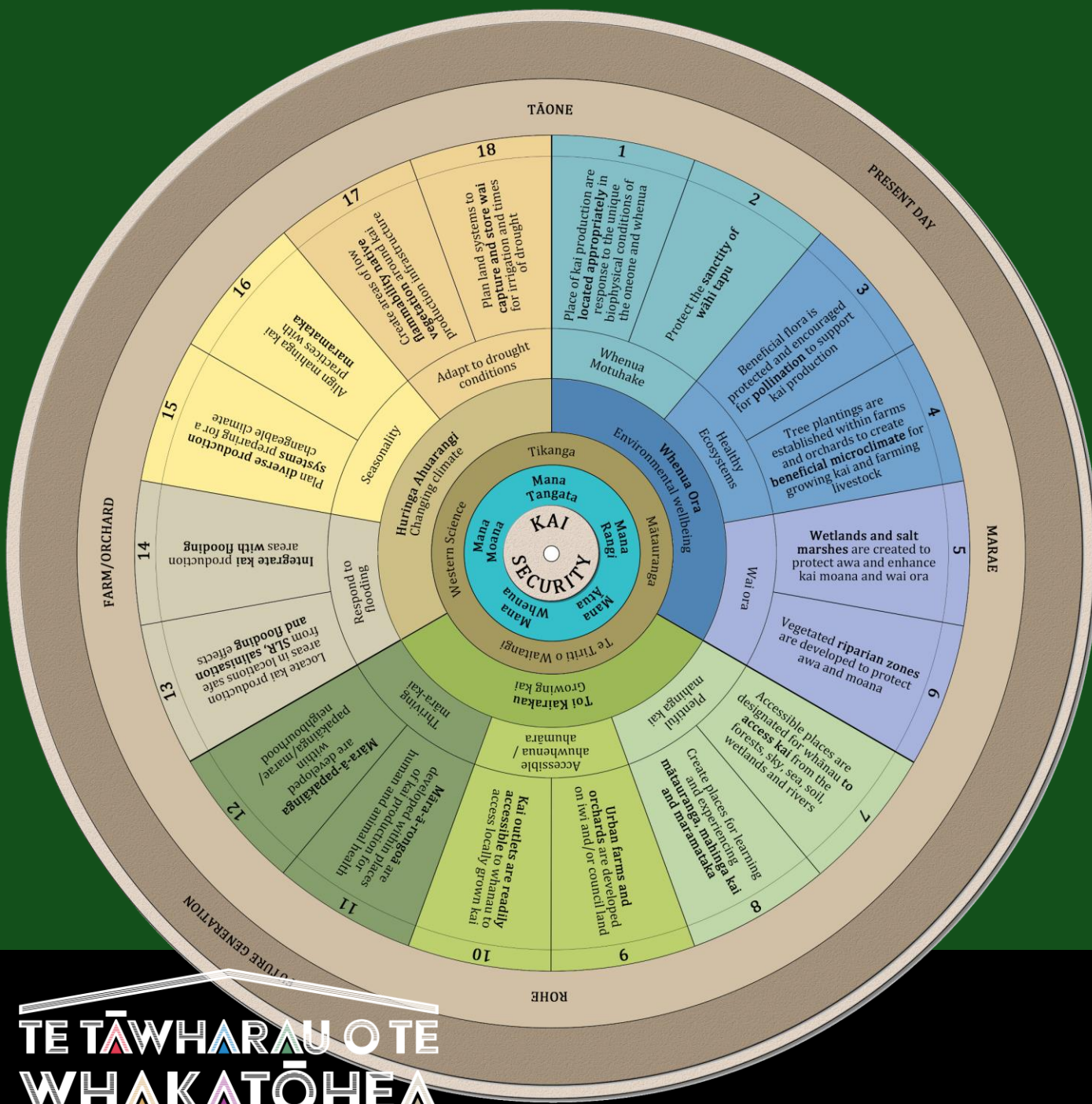


Whakatōhea  
Māori Trust Board



LINCOLN  
UNIVERSITY

TE TĀWHARAU O TE  
WHAKATŌHEA



# TE TĀWHARAU O TE WHAKATŌHEA



# Ngā mihi - Acknowledgements



Te Whakatōhea Māori Trust Board – Te Tāwharau o Te Whakatōhea  
 Te Taumata Kaumātua o Te Whakatōhea  
 Wānanga Contributors/Community Gardeners  
 Robert Edwards (Chair Te Whakatōhea Trust Board)  
 Graeme (Paki) Reisterer (Te Whakatōhea Trust Board)  
 Danie Poihipi (Kaumātua o Te Whakatōhea, Te Whānau ā Apanui)  
 Huikau Rata (Researcher Te Whakatōhea, Te Whānau ā Apanui, Ngāi Tai, Kai Tahu)  
 Dickie Farrar (CEO Whakatōhea Māori Trust Board)  
 Danny Paruru (Iwi Development Manager Whakatōhea Māori Trust Board)  
 Hope Hata (Te Whakatōhea Research Coordinator)  
 Te Kahautu Maxwell (Te Whakatōhea Trust Board, University of Waikato)  
 Roger Rakuraku (Te Whakatōhea, Te Wānanga o Aotearoa)

Te Whare Wānaka o Aoraki Lincoln University

Centre of Excellence: Designing Future Productive Landscapes

Pablo Gregorini (Head of Centre of Excellence: Designing Future Productive Landscapes)  
 Shannon Davis (School of Landscape Architecture)  
 Richard Morris (Faculty of Agriculture and Life Science)  
 Charles (Merf) Merfield (Merfield Aronomy Ltd)  
 Isobel Happy (School of Landscape Architecture)  
 Hanley Chen (School of Landscape Architecture)  
 Ben Ormsby (School of Landscape Architecture)







# Tutiria mai nga iwi

Tūtira mai ngā iwi,  
tātou tātou e

Tūtira mai ngā iwi,  
tātou tātou e

Whai-a te marama-tanga,  
me te aroha - e ngā iwi!

Ki-a ko tapa tahi,  
Ki-a ko-tahi rā

Tātou tātou e

(Repeat)

Tā-tou tā-tou e E!!

Hi aue hei !!!



Whakatōhea  
Māori Trust Board



LINCOLN  
UNIVERSITY  
TE WHARE WĀHAKA O AORAKI

TE TĀWHARAU O TE  
WHAKATŌHEA