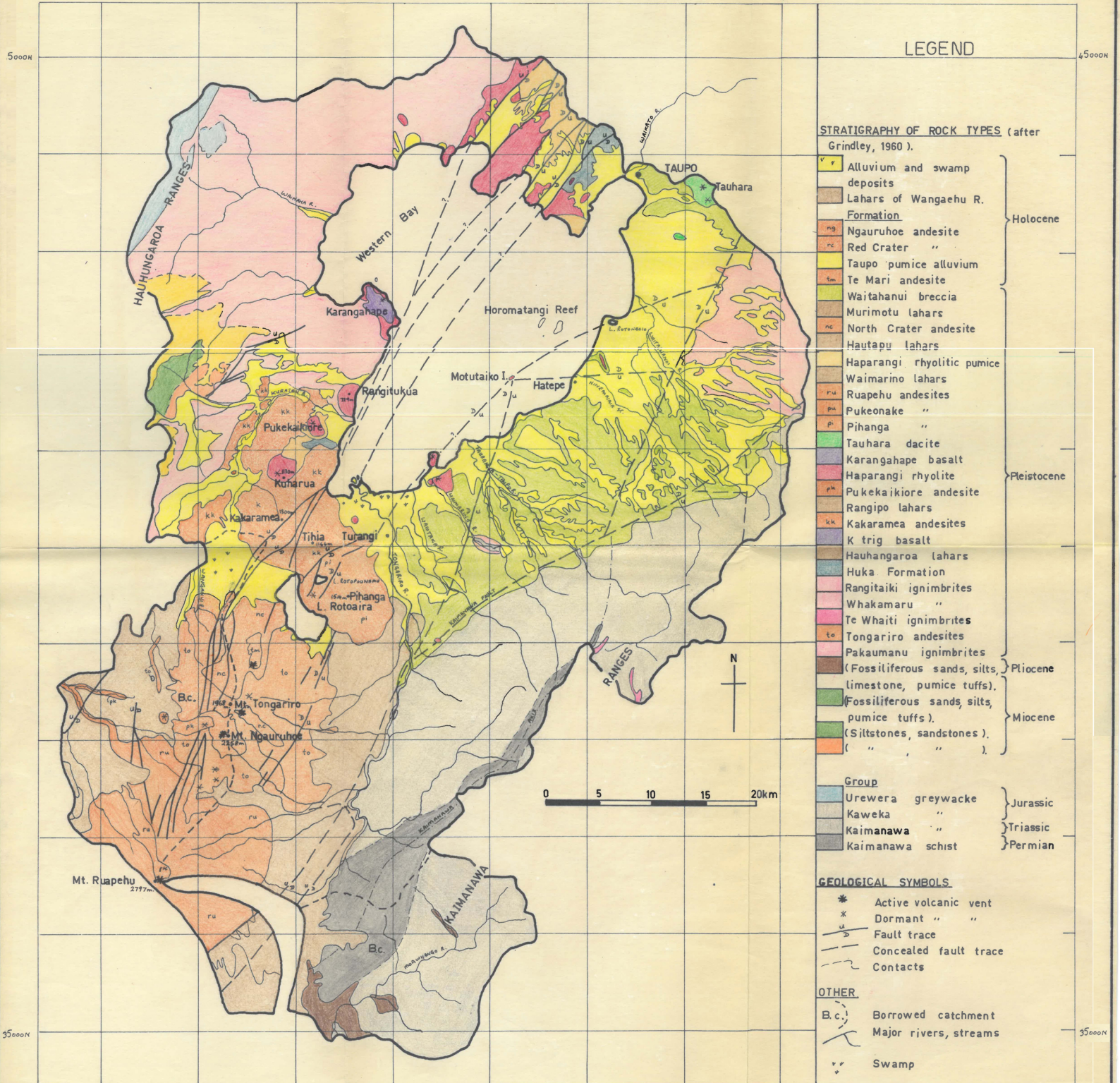


GEOLOGY OF LAKE TAUPO CATCHMENT



LEGEND

STRATIGRAPHY OF ROCK TYPES (after Grindley, 1960).

- | | |
|---|---|
| <ul style="list-style-type: none"> Alluvium and swamp deposits Lahars of Wangaehu R. Formation Ngauruhoe andesite Red Crater " Taupo pumice alluvium Te Mari andesite Waitahanui breccia Murimotu lahars North Crater andesite Hautapu lahars Haparangi rhyolitic pumice Waimarino lahars Ruapehu andesites Pukeonake " Pihanga " Tauhara dacite Karangahape basalt Haparangi rhyolite Pukekaiore andesite Rangipo lahars Kakarama andesites K trig basalt Hauhungaroa lahars Huka Formation Rangitaiki ignimbrites Whakamaru " Te Whaiti ignimbrites Tongariro andesites Pakaumanu ignimbrites (Fossiliferous sands, silts, limestone, pumice tuffs). (Fossiliferous sands, silts, pumice tuffs). (Siltstones, sandstones). (" ") | <ul style="list-style-type: none"> Holocene Pleistocene Pliocene Miocene Jurassic Triassic Permian |
|---|---|

GEOLOGICAL SYMBOLS

- * Active volcanic vent
- x Dormant " "
- Fault trace
- Concealed fault trace
- Contacts

OTHER

- B.c. Borrowed catchment
- Major rivers, streams
- Swamp

MAP 1