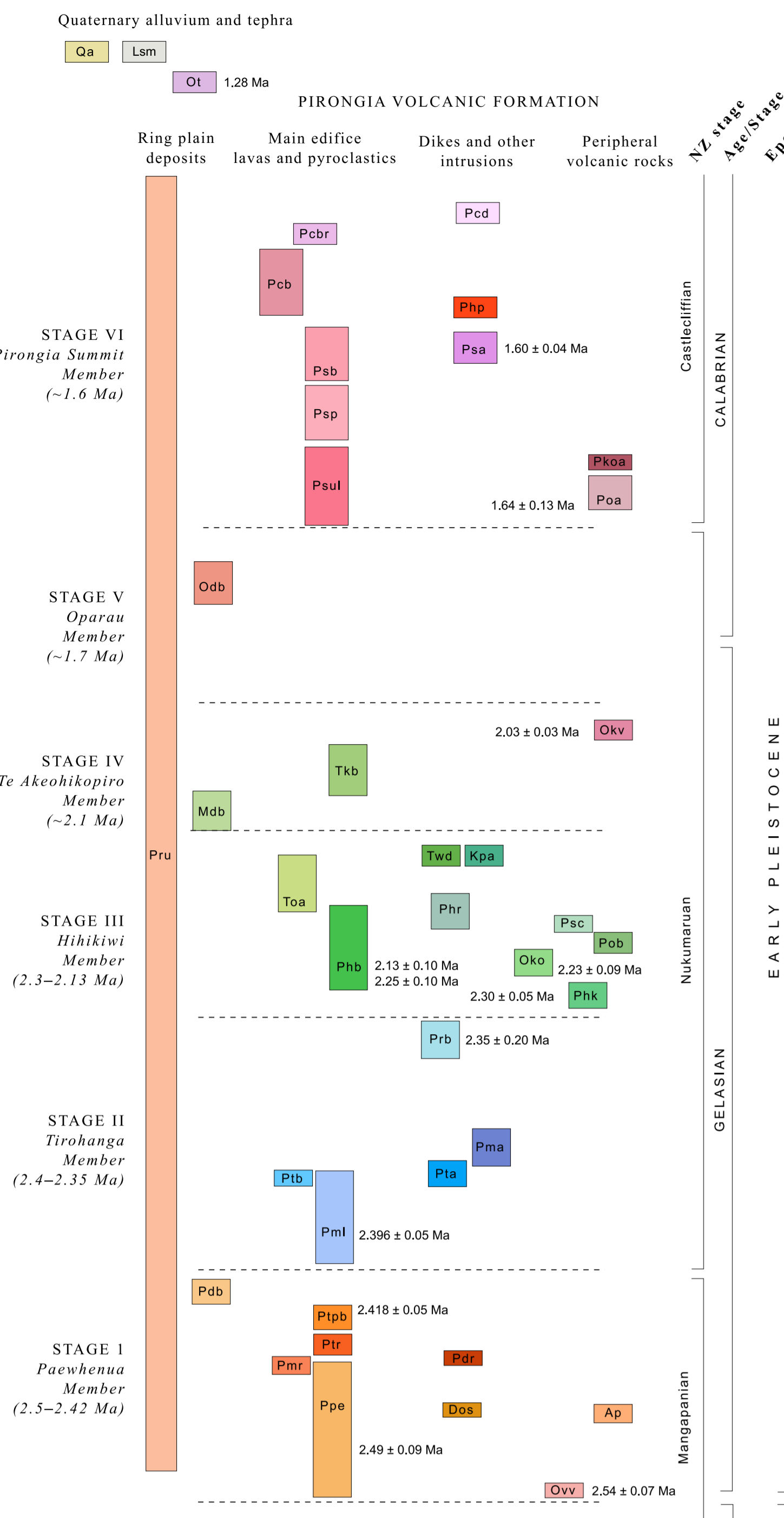
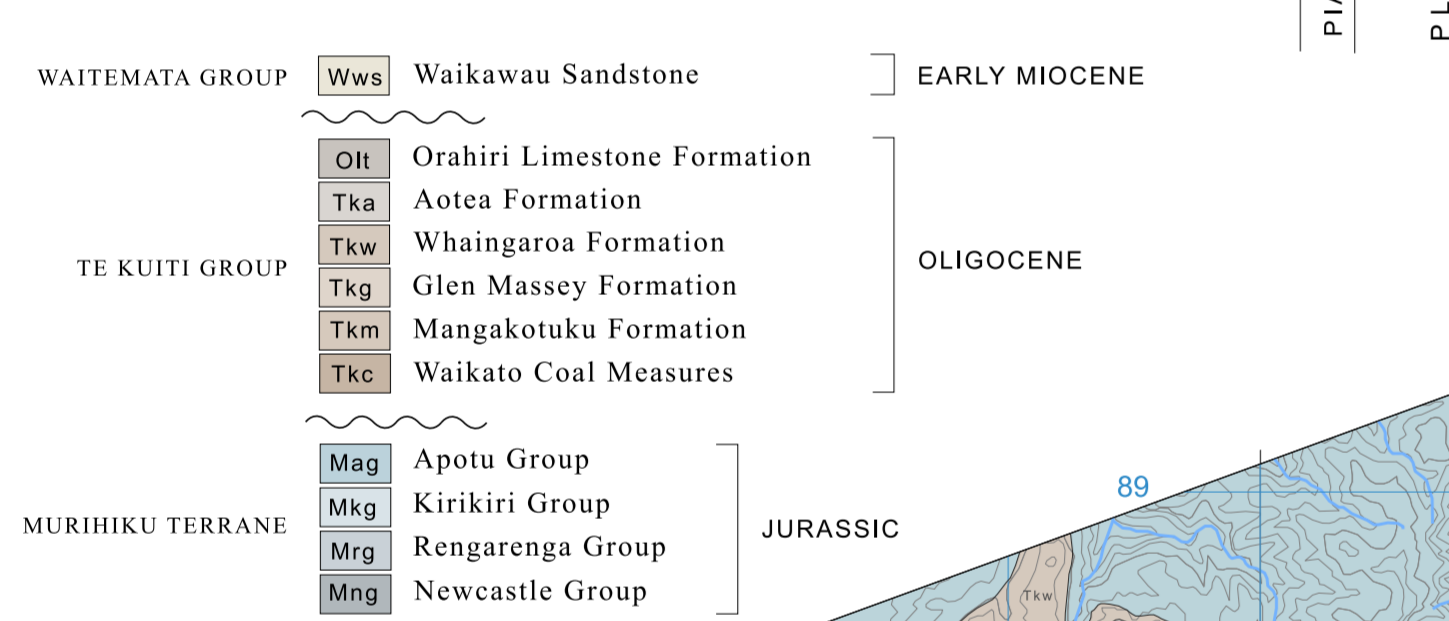


# GEOLOGY OF THE PIRONGIA VOLCANO, WAIKATO: 1:30,000 GEOLOGICAL MAP

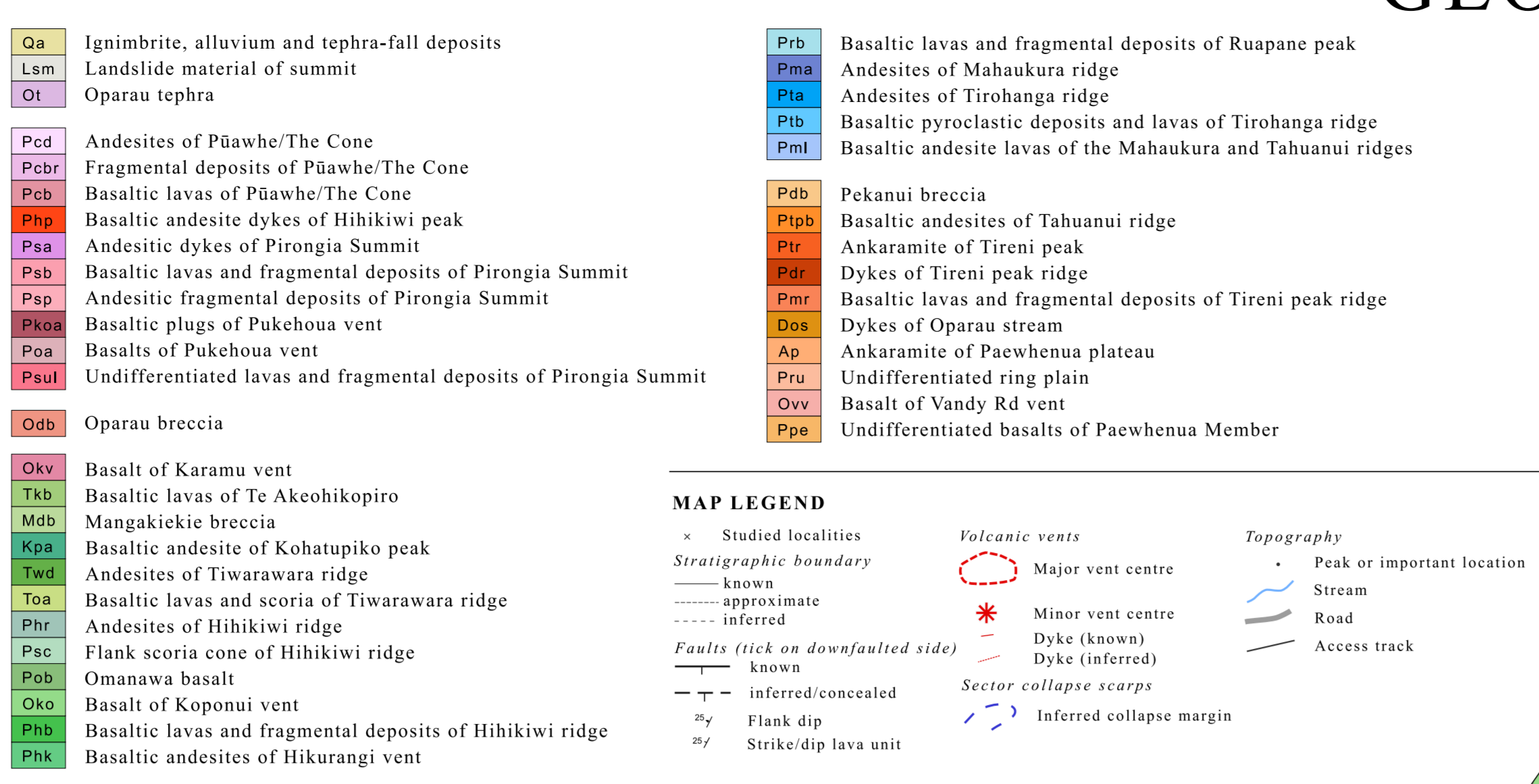
## GEOCHRONOLOGY



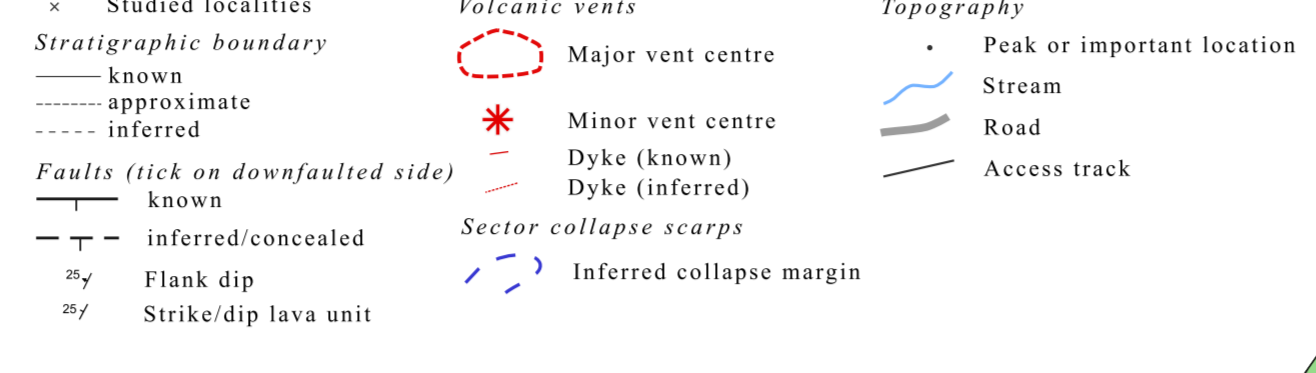
## SEDIMENTARY ROCKS



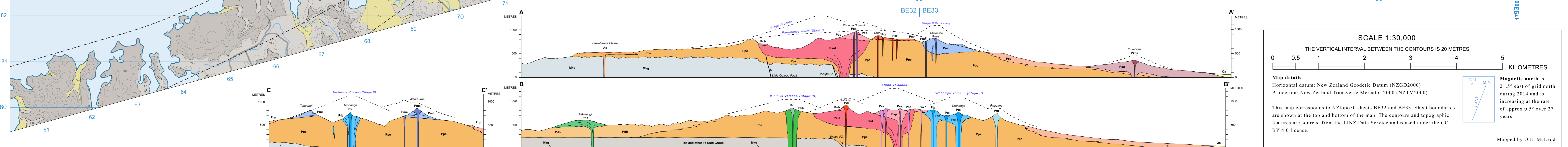
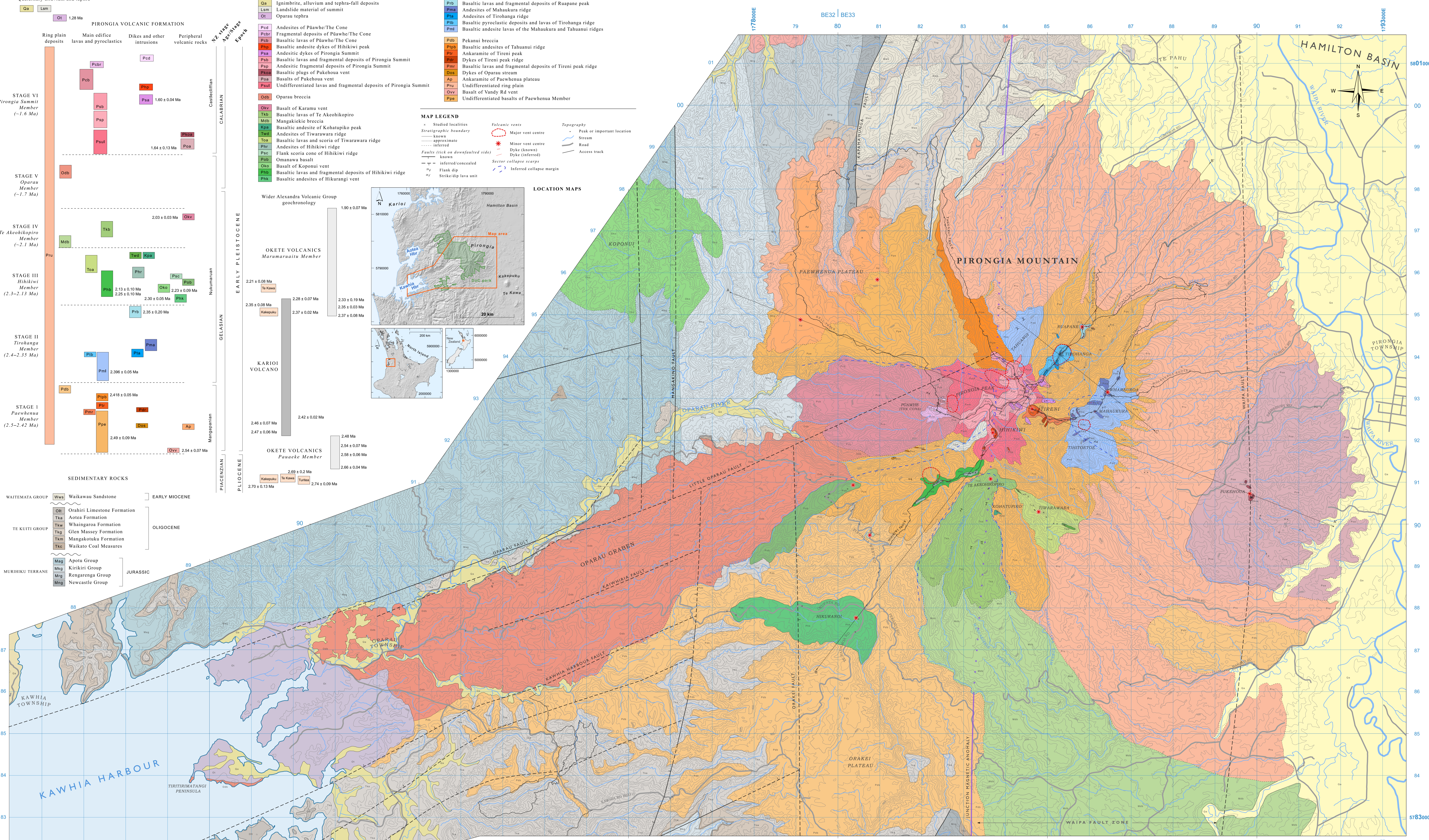
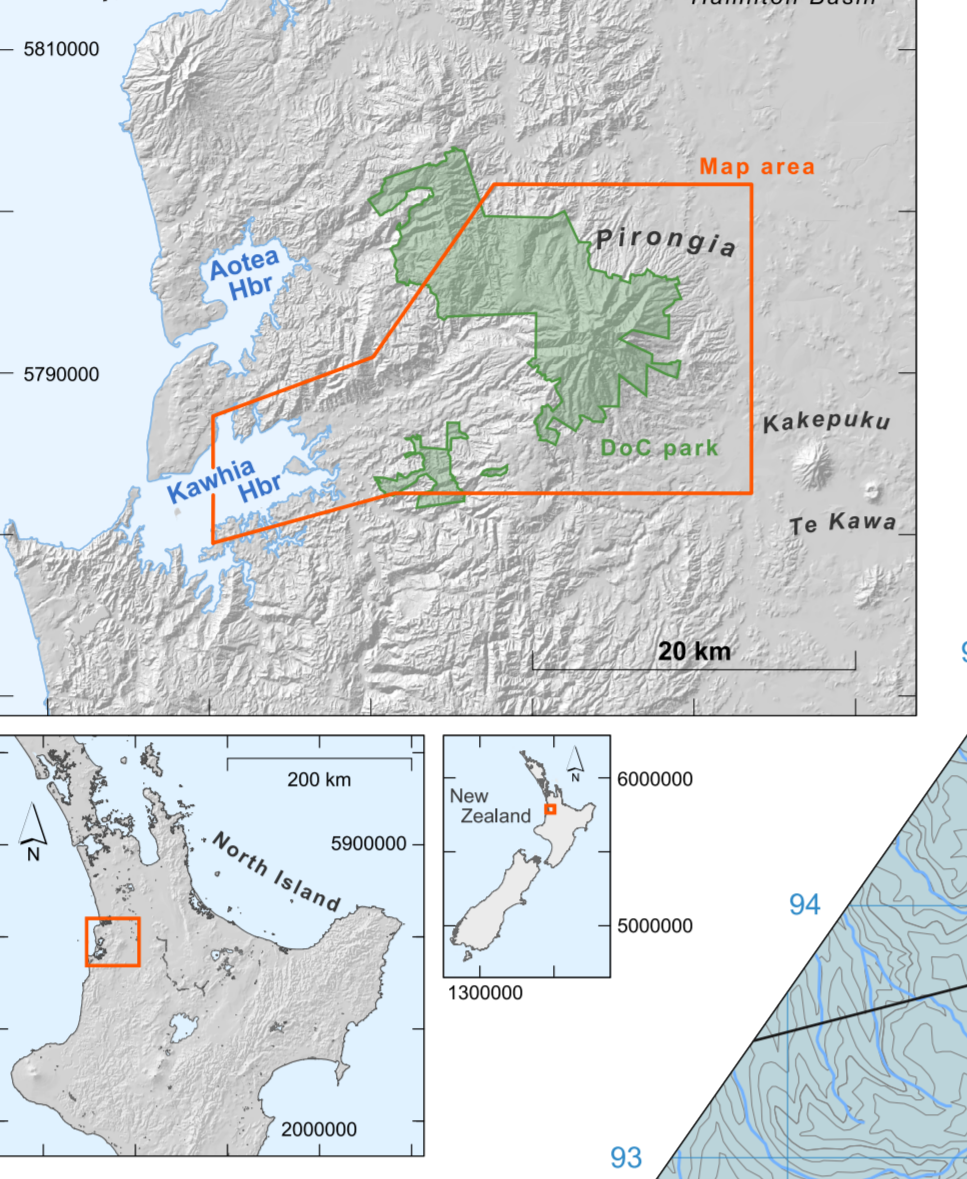
## LIST OF MAP UNITS



## MAP LEGEND



## LOCATION MAPS



**SCALE 1:30,000**

THE VERTICAL INTERVAL BETWEEN THE CONTOURS IS 20 METRES

0 0.5 1 2 3 4 5 KILOMETRES

**Map details**  
 Horizontal datum: New Zealand Geodetic Datum (NZGD2000)  
 Projection: New Zealand Transverse Mercator 2000 (NZTM2000)

**Magnetic north** is 21.5° east of grid north during 2014 and is increasing at the rate of approx 0.5° over 27 years.

This map corresponds to NZTopo50 sheets BE32 and BE33. Sheet boundaries are shown at the top and bottom of the map. The contours and topographic features are sourced from the LINZ Data Service and reused under the CC BY 4.0 license.

Mapped by O.E. McLeod