



## Correction: SGLT2 inhibitor use and disparities in all-cause mortality in type 2 diabetes: insights from a multi-ethnic population

Lynne Chepulis<sup>1</sup> · Han Gan<sup>2</sup> · David Simmons<sup>3</sup> · Mark Rodrigues<sup>1</sup> · Rawiri Keenan<sup>1</sup> · Rinki Murphy<sup>4,5</sup> · Tim Kenealy<sup>4</sup> · Leanne Te Karu<sup>4</sup> · Dianna Magliano<sup>6</sup> · Jo Scott-Jones<sup>7</sup> · Allan Moffitt<sup>8</sup> · Chunhuan Lao<sup>1</sup> · Ross Lawrenson<sup>1</sup> · Ryan G. Paul<sup>1,9</sup>

© The Author(s) 2026

### Correction: Diabetologia

<https://doi.org/10.1007/s00125-026-06733-2>

In the original version of the article, the keys in Fig. 1 were incorrect. Following is the corrected figure:

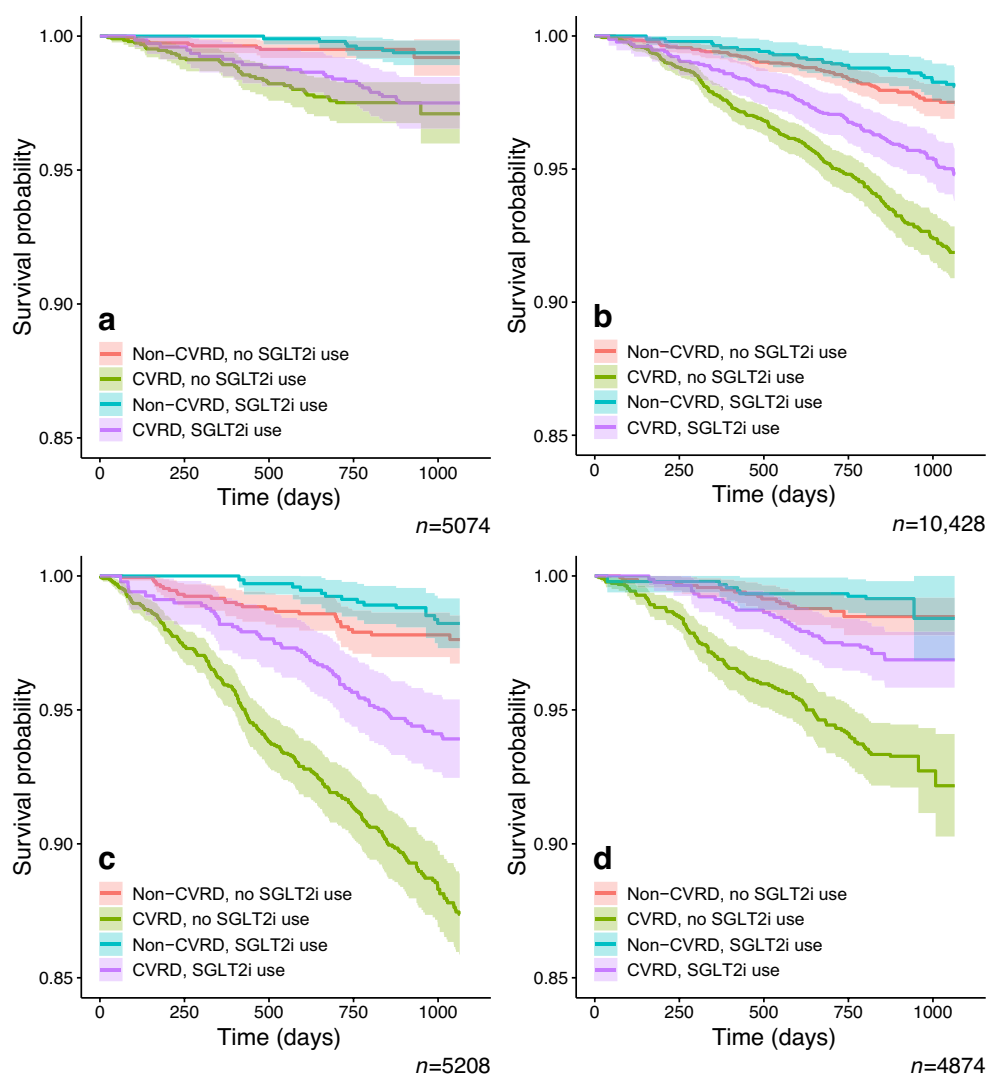
---

The original article can be found online at <https://doi.org/10.1007/s00125-026-06733-2>.

---

✉ Lynne Chepulis  
Lynne@waikato.ac.nz

- <sup>1</sup> Medical Research Centre, University of Waikato, Hamilton, New Zealand
- <sup>2</sup> School of Computing and Mathematical Sciences, University of Waikato, Hamilton, New Zealand
- <sup>3</sup> School of Medicine, Western Sydney University, Sydney, NSW, Australia
- <sup>4</sup> Faculty of Medical and Health Sciences, University of Auckland, Auckland, New Zealand
- <sup>5</sup> Health New Zealand / Te Whatu Ora Te Toka Tumai, Auckland, New Zealand
- <sup>6</sup> School of Public Health and Preventative Medicine, Monash University, Melbourne, VIC, Australia
- <sup>7</sup> Midlands Health Network, Hamilton, New Zealand
- <sup>8</sup> Procure Health Limited, Auckland, New Zealand
- <sup>9</sup> Health New Zealand / Te Whatu Ora Waikato, Hamilton, New Zealand



**Fig. 1** Kaplan–Meier survival curves for (a) Asian, (b) European, (c) Māori and (d) Pacific people with type 2 diabetes (with/without CVRD) and use/no use of SGLT2i

The original article has been corrected.

**Open Access** This article is licensed under a Creative Commons Attribution 4.0 International License, which permits use, sharing, adaptation, distribution and reproduction in any medium or format, as long as you give appropriate credit to the original author(s) and the source, provide a link to the Creative Commons licence, and indicate if changes were made. The images or other third party material in this article are included in the article's Creative Commons licence, unless indicated otherwise in a credit line to the material. If material is not included in

the article's Creative Commons licence and your intended use is not permitted by statutory regulation or exceeds the permitted use, you will need to obtain permission directly from the copyright holder. To view a copy of this licence, visit <http://creativecommons.org/licenses/by/4.0/>.

**Publisher's Note** Springer Nature remains neutral with regard to jurisdictional claims in published maps and institutional affiliations.