

Topographic Legend

ROADS

- sealed
- Road surface *metalled*
-
- unmetalled
- Vehicle track
- Foot track
- National State Highway

WATER FEATURES

- River, stream
- Riverbody

RELIEF FEATURES

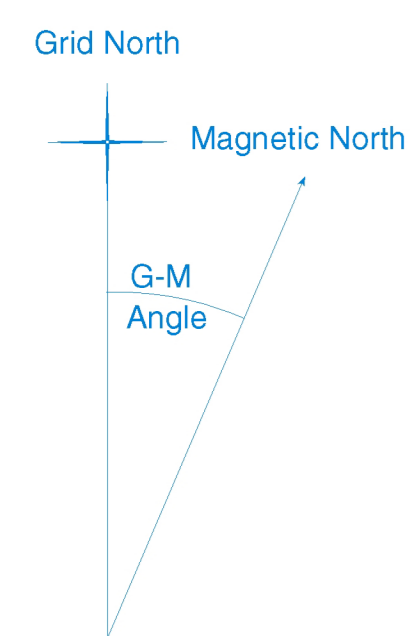
- Index contour
- Intermediate contour
- Trig station beacons; unbeacons
- Elevation in metres 100 @ 100 m
- Cliff, terrace

MISCELLANEOUS

- Large buildings
- Residential area
- Building
- Homesite
- Airstrip
- Mine; underground, opencast

CULTURAL FEATURES

- Localities (over 200)
- Localities (under 200)
- Homesites
- Miscellaneous features and descriptive notes
- Airport
- ROAD AND RAILWAY NAMES
- TRACK NAMES
- Trig identification numbers and names



MAGNETIC NORTH on this map is 23.3° (at 18m) EAST of GRID NORTH (at 18m) increasing at a rate of approx 1/2° (0 mka) every 5 years.

This map is drawn on the New Zealand Map Grid Projection, a minimum-error conformal projection. The grid is the New Zealand map grid, showing coordinates in metres in terms of the Geocentric Datum 1949, based on the International Hayford spheroid.

TO GIVE A GRID REFERENCE ON THIS MAP (To nearest 100 metres)

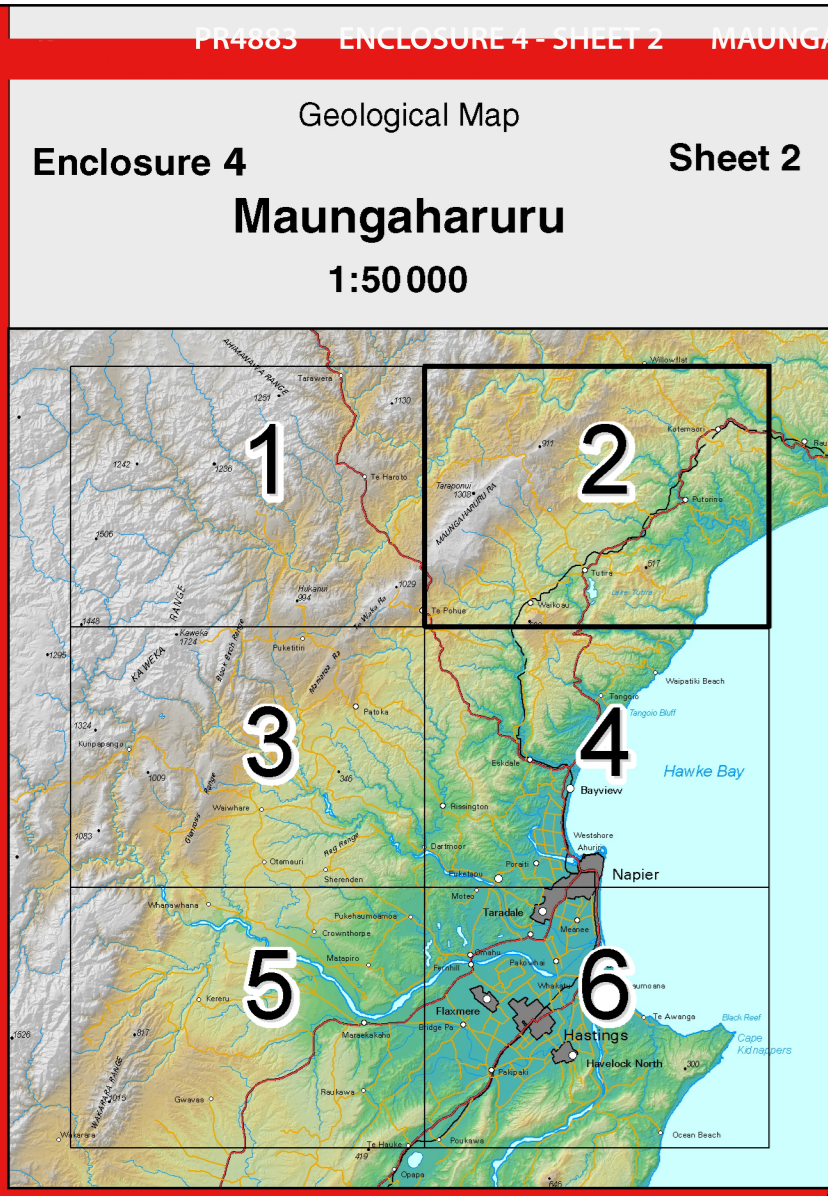
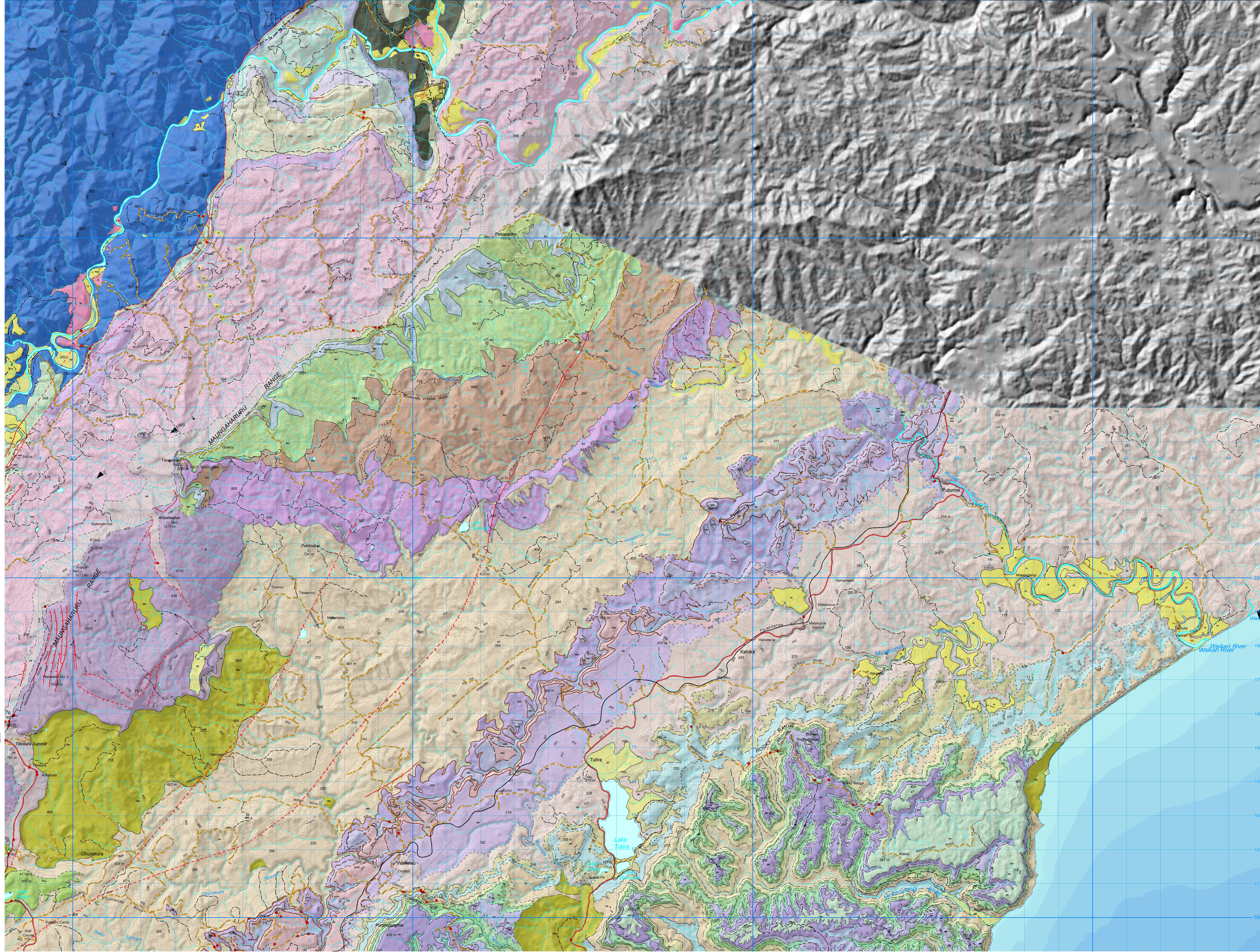
Designate the smaller figures of corner grid numbers. They are for finding full coordinates.

SAMPLE POINT: Pukekohe	
EAST	WEST
Locate first VERTICAL grid line to LEFT of point and read figure labelling the line at the top of the map.	Locate first HORIZONTAL grid line to BELOW of point and read figure labelling the line at the left or right margin of the map.
Estimate tenths eastward from grid line to point.	Estimate tenths northward from grid line to point.

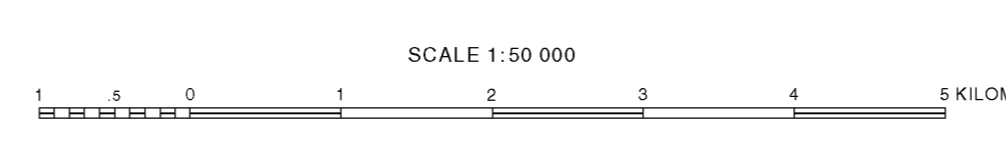
SAMPLE REFERENCE (Quote sheet number first): V20 043852

The topography on this map is taken from the LINZ CD Rom 1:50 000 Topographic Vector Data Set. Note that this map covers all or part of topographic sheets NZMS 260 121, 122, 123, 124, 125, 126, 127, 128, 129, 130, 131, 132, 133, 134, 135, 136, 137, 138, 139, 140, 141, 142, 143, 144, 145, 146, 147, 148, 149, 150, 151, 152, 153, 154, 155, 156, 157, 158, 159, 160, 161, 162, 163, 164, 165, 166, 167, 168, 169, 170, 171, 172, 173, 174, 175, 176, 177, 178, 179, 180, 181, 182, 183, 184, 185, 186, 187, 188, 189, 190, 191, 192, 193, 194, 195, 196, 197, 198, 199, 200, 201, 202, 203, 204, 205, 206, 207, 208, 209, 210, 211, 212, 213, 214, 215, 216, 217, 218, 219, 220, 221, 222, 223, 224, 225, 226, 227, 228, 229, 230, 231, 232, 233, 234, 235, 236, 237, 238, 239, 240, 241, 242, 243, 244, 245, 246, 247, 248, 249, 250, 251, 252, 253, 254, 255, 256, 257, 258, 259, 260, 261, 262, 263, 264, 265, 266, 267, 268, 269, 270, 271, 272, 273, 274, 275, 276, 277, 278, 279, 280, 281, 282, 283, 284, 285, 286, 287, 288, 289, 290, 291, 292, 293, 294, 295, 296, 297, 298, 299, 300, 301, 302, 303, 304, 305, 306, 307, 308, 309, 310, 311, 312, 313, 314, 315, 316, 317, 318, 319, 320, 321, 322, 323, 324, 325, 326, 327, 328, 329, 330, 331, 332, 333, 334, 335, 336, 337, 338, 339, 340, 341, 342, 343, 344, 345, 346, 347, 348, 349, 350, 351, 352, 353, 354, 355, 356, 357, 358, 359, 360, 361, 362, 363, 364, 365, 366, 367, 368, 369, 370, 371, 372, 373, 374, 375, 376, 377, 378, 379, 380, 381, 382, 383, 384, 385, 386, 387, 388, 389, 390, 391, 392, 393, 394, 395, 396, 397, 398, 399, 400, 401, 402, 403, 404, 405, 406, 407, 408, 409, 410, 411, 412, 413, 414, 415, 416, 417, 418, 419, 420, 421, 422, 423, 424, 425, 426, 427, 428, 429, 430, 431, 432, 433, 434, 435, 436, 437, 438, 439, 440, 441, 442, 443, 444, 445, 446, 447, 448, 449, 450, 451, 452, 453, 454, 455, 456, 457, 458, 459, 460, 461, 462, 463, 464, 465, 466, 467, 468, 469, 470, 471, 472, 473, 474, 475, 476, 477, 478, 479, 480, 481, 482, 483, 484, 485, 486, 487, 488, 489, 490, 491, 492, 493, 494, 495, 496, 497, 498, 499, 500, 501, 502, 503, 504, 505, 506, 507, 508, 509, 510, 511, 512, 513, 514, 515, 516, 517, 518, 519, 520, 521, 522, 523, 524, 525, 526, 527, 528, 529, 530, 531, 532, 533, 534, 535, 536, 537, 538, 539, 540, 541, 542, 543, 544, 545, 546, 547, 548, 549, 550, 551, 552, 553, 554, 555, 556, 557, 558, 559, 560, 561, 562, 563, 564, 565, 566, 567, 568, 569, 570, 571, 572, 573, 574, 575, 576, 577, 578, 579, 580, 581, 582, 583, 584, 585, 586, 587, 588, 589, 590, 591, 592, 593, 594, 595, 596, 597, 598, 599, 600, 601, 602, 603, 604, 605, 606, 607, 608, 609, 610, 611, 612, 613, 614, 615, 616, 617, 618, 619, 620, 621, 622, 623, 624, 625, 626, 627, 628, 629, 630, 631, 632, 633, 634, 635, 636, 637, 638, 639, 640, 641, 642, 643, 644, 645, 646, 647, 648, 649, 650, 651, 652, 653, 654, 655, 656, 657, 658, 659, 660, 661, 662, 663, 664, 665, 666, 667, 668, 669, 670, 671, 672, 673, 674, 675, 676, 677, 678, 679, 680, 681, 682, 683, 684, 685, 686, 687, 688, 689, 690, 691, 692, 693, 694, 695, 696, 697, 698, 699, 700, 701, 702, 703, 704, 705, 706, 707, 708, 709, 710, 711, 712, 713, 714, 715, 716, 717, 718, 719, 720, 721, 722, 723, 724, 725, 726, 727, 728, 729, 730, 731, 732, 733, 734, 735, 736, 737, 738, 739, 740, 741, 742, 743, 744, 745, 746, 747, 748, 749, 750, 751, 752, 753, 754, 755, 756, 757, 758, 759, 760, 761, 762, 763, 764, 765, 766, 767, 768, 769, 770, 771, 772, 773, 774, 775, 776, 777, 778, 779, 780, 781, 782, 783, 784, 785, 786, 787, 788, 789, 790, 791, 792, 793, 794, 795, 796, 797, 798, 799, 800, 801, 802, 803, 804, 805, 806, 807, 808, 809, 810, 811, 812, 813, 814, 815, 816, 817, 818, 819, 820, 821, 822, 823, 824, 825, 826, 827, 828, 829, 830, 831, 832, 833, 834, 835, 836, 837, 838, 839, 840, 841, 842, 843, 844, 845, 846, 847, 848, 849, 850, 851, 852, 853, 854, 855, 856, 857, 858, 859, 860, 861, 862, 863, 864, 865, 866, 867, 868, 869, 870, 871, 872, 873, 874, 875, 876, 877, 878, 879, 880, 881, 882, 883, 884, 885, 886, 887, 888, 889, 890, 891, 892, 893, 894, 895, 896, 897, 898, 899, 900, 901, 902, 903, 904, 905, 906, 907, 908, 909, 910, 911, 912, 913, 914, 915, 916, 917, 918, 919, 920, 921, 922, 923, 924, 925, 926, 927, 928, 929, 930, 931, 932, 933, 934, 935, 936, 937, 938, 939, 940, 941, 942, 943, 944, 945, 946, 947, 948, 949, 950, 951, 952, 953, 954, 955, 956, 957, 958, 959, 960, 961, 962, 963, 964, 965, 966, 967, 968, 969, 970, 971, 972, 973, 974, 975, 976, 977, 978, 979, 980, 981, 982, 983, 984, 985, 986, 987, 988, 989, 990, 991, 992, 993, 994, 995, 996, 997, 998, 999, 1000.

THE VERTICAL INTERVAL BETWEEN THE CONTOURS IS 20 METRES HEIGHTS ARE ABOVE MEAN SEA LEVEL.



Kyle J. Bland* and Peter J.J. Kamp 2014
Bland, K.J. and Kamp, P.J.J. 2014: Hawke's Bay forearc basin (eastern North Island, New Zealand): Stratigraphy, biostratigraphy, chronology, geological maps and paleogeology. Ministry of Business, Innovation and Employment, New Zealand, unpublished Petroleum Report PR4883, 66 p.
Department of Earth and Ocean Sciences
University of Waikato
* Current address: GNS Science
THE UNIVERSITY OF WAIKATO
100 Main Building & Station



BIBLIOGRAPHIC REFERENCE
Bland, K.J. and Kamp, P.J.J. 2014: Hawke's Bay forearc basin (eastern North Island, New Zealand): Stratigraphy, biostratigraphy, chronology, geological maps and paleogeology. Ministry of Business, Innovation and Employment, New Zealand, unpublished Petroleum Report PR4883, 66 p.