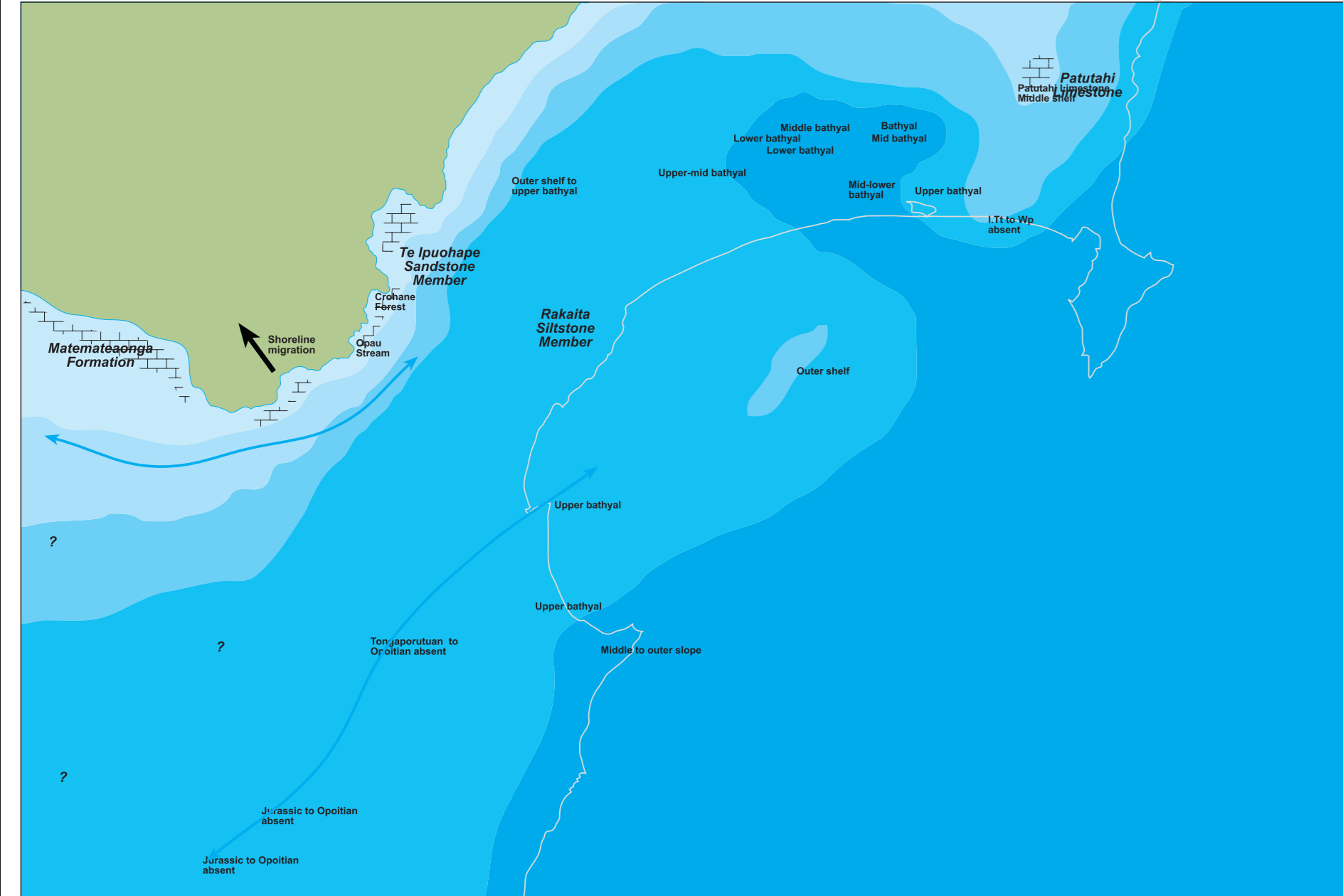
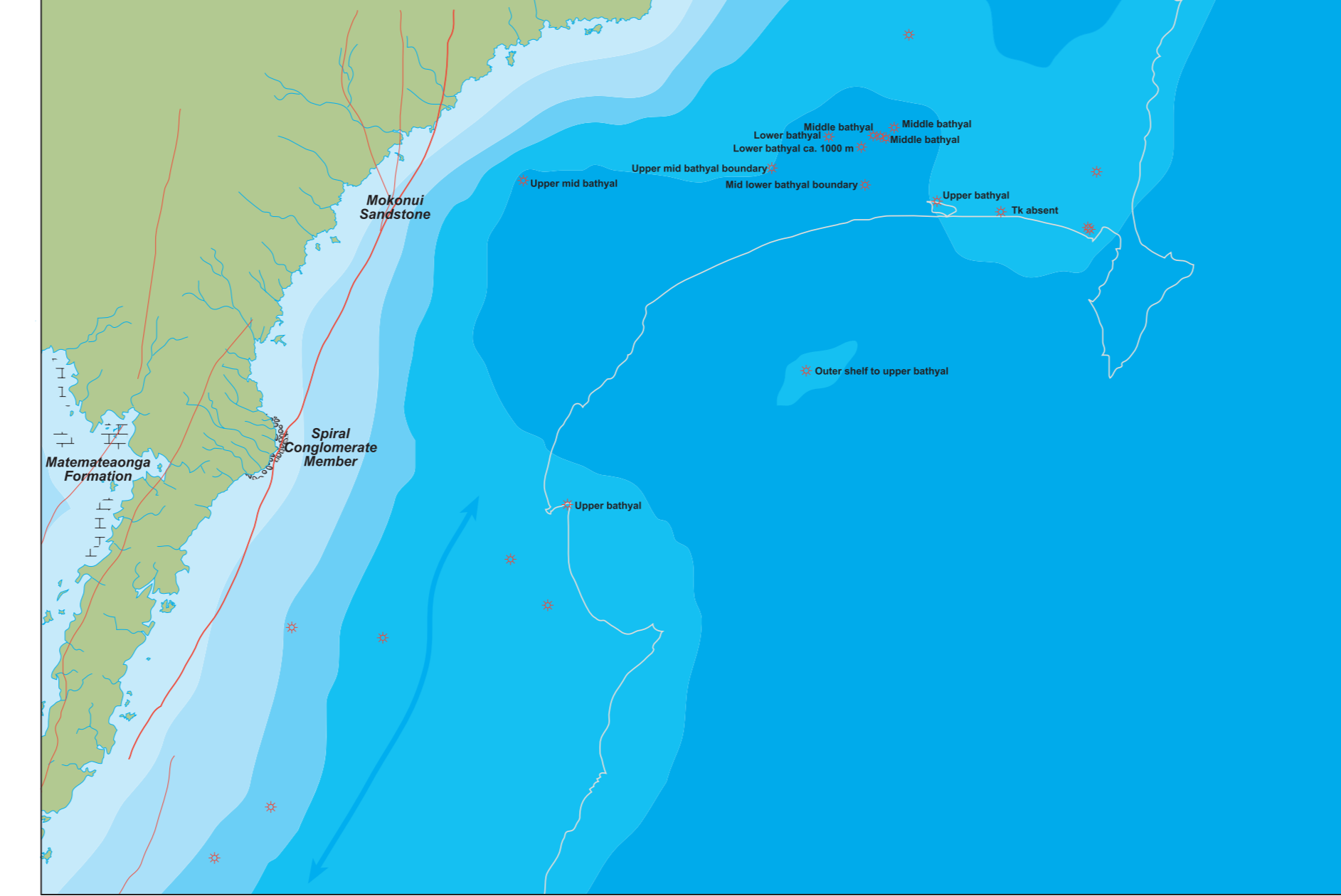


PR4883 Enclosure 5: Neogene paleogeographic maps of the Forearc Basin in central Hawke's Bay

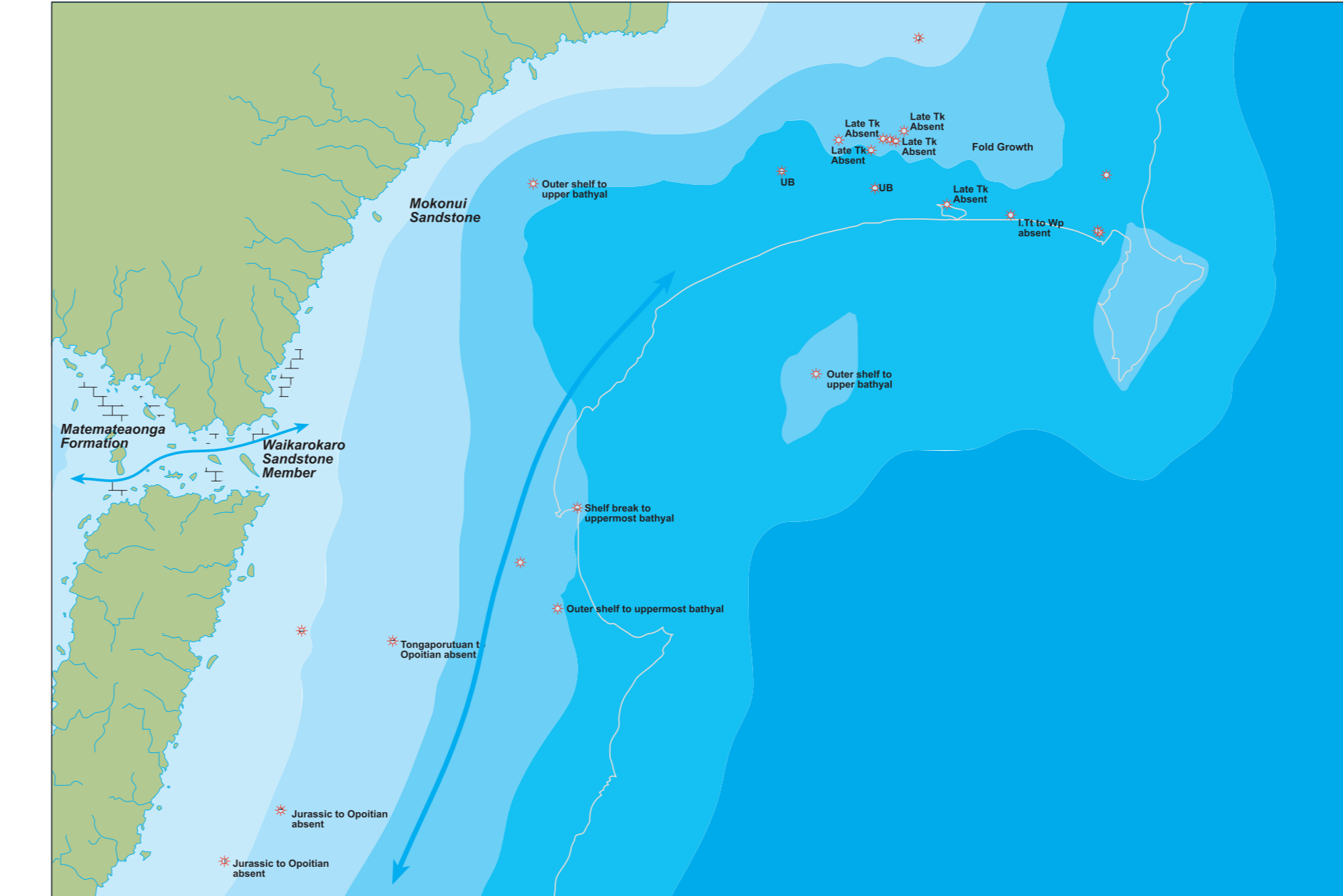
Map 1 c. 8 Ma
UPPER TONGAPORUTUAN



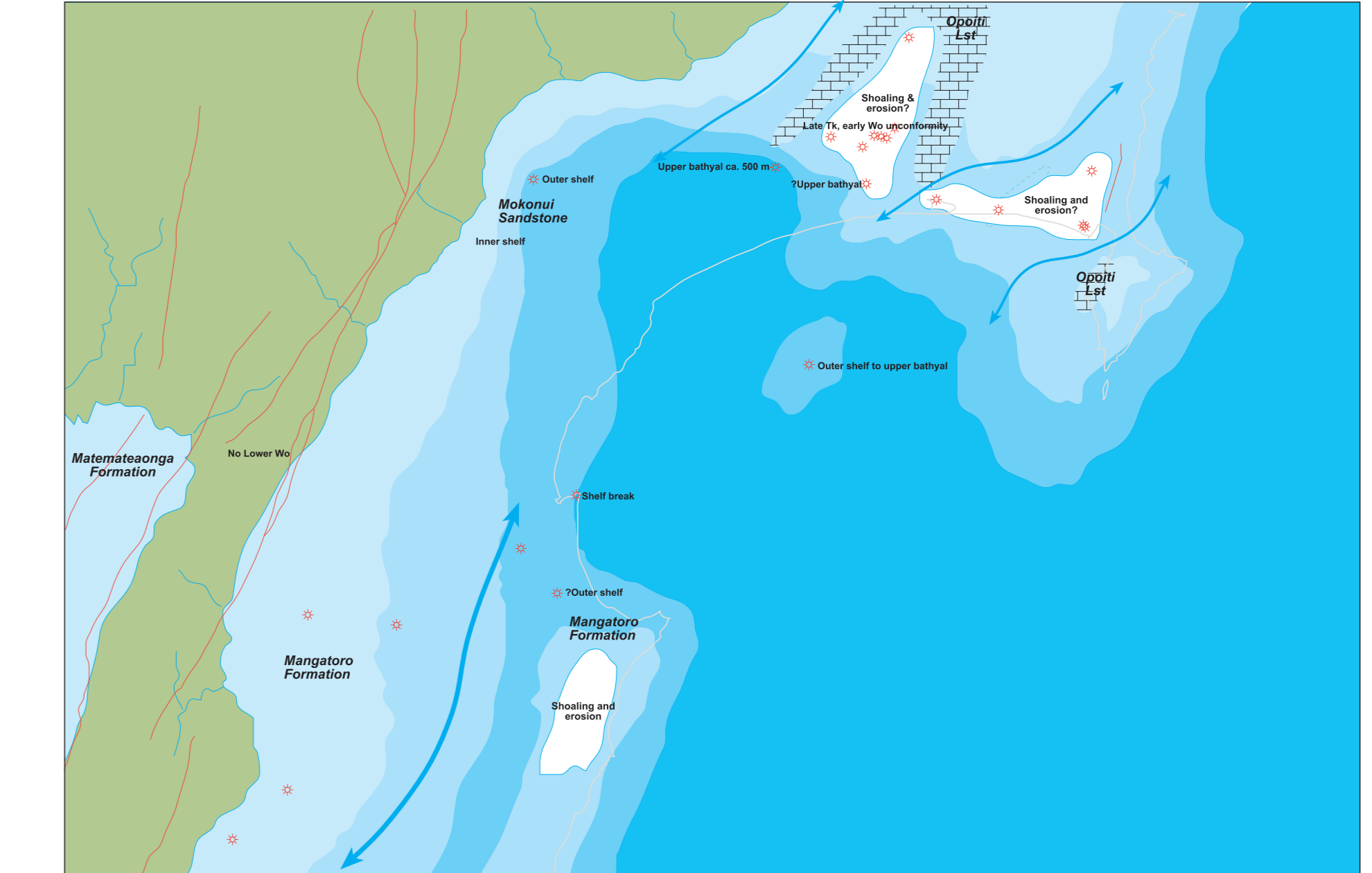
Map 2 c. 7.2 Ma
LOWER KAPITEAN



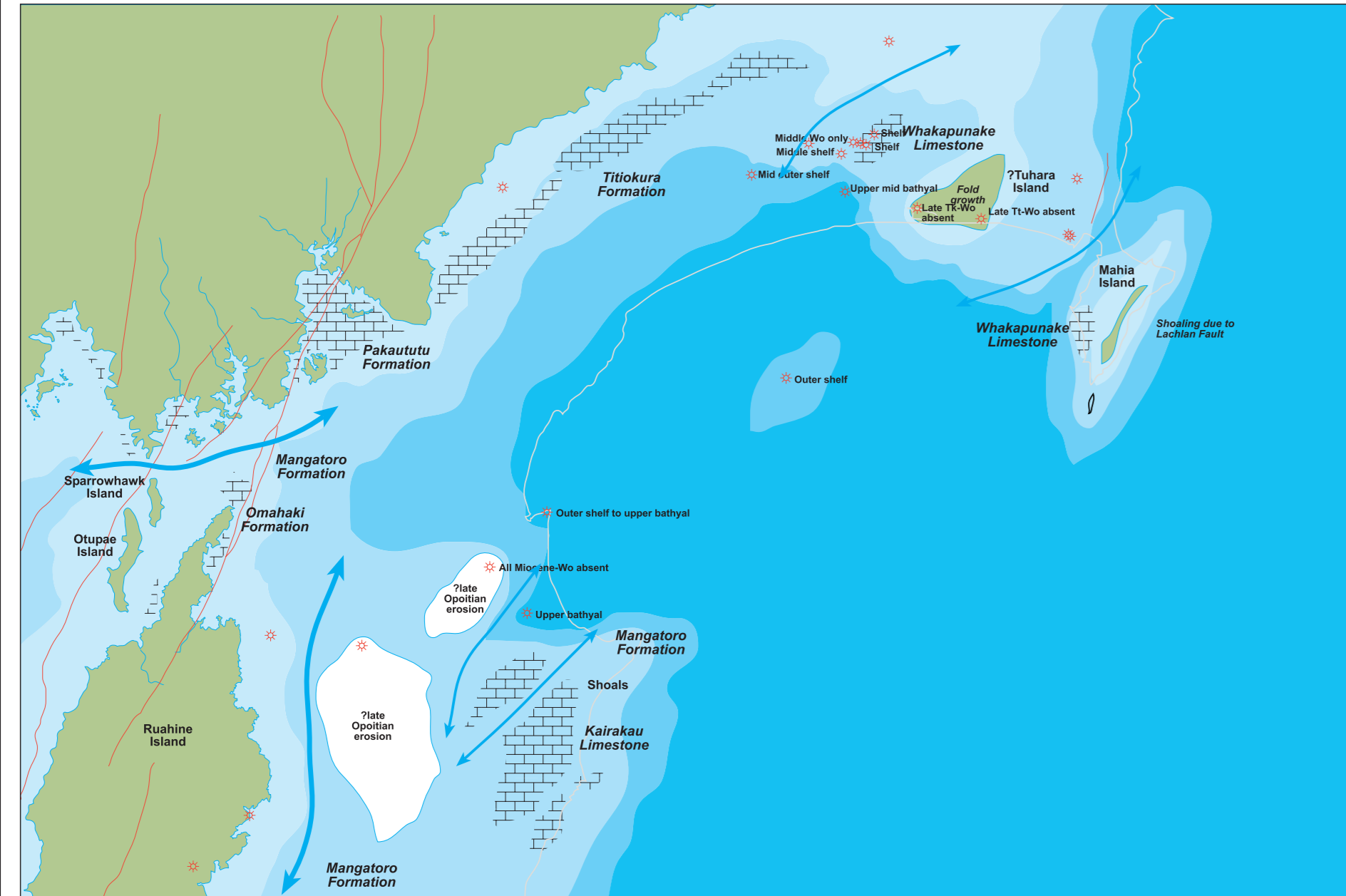
Map 3 c. 5.5 Ma
UPPER KAPITEAN



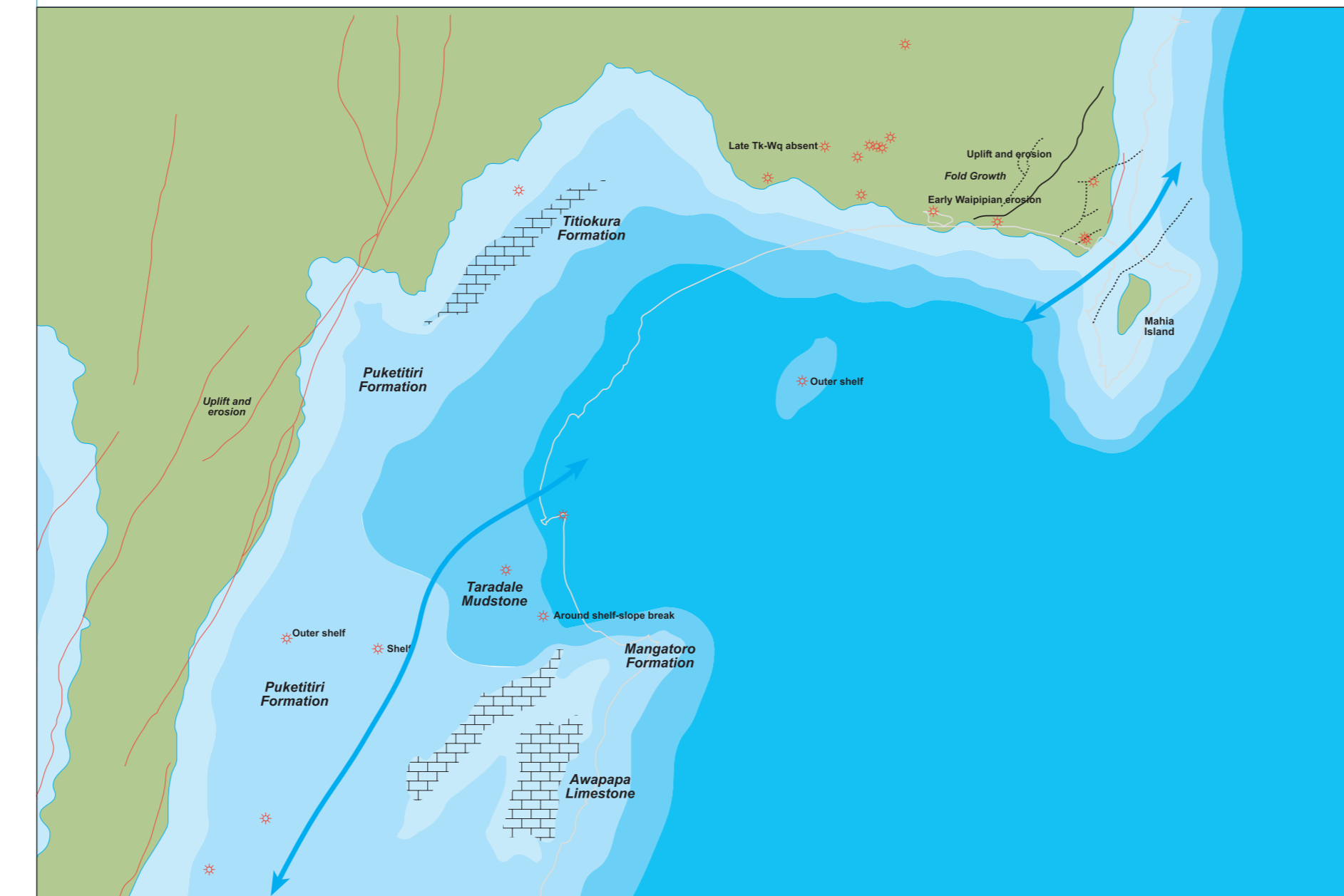
Map 4 c. 5.25 Ma
LOWER OPOITIAN



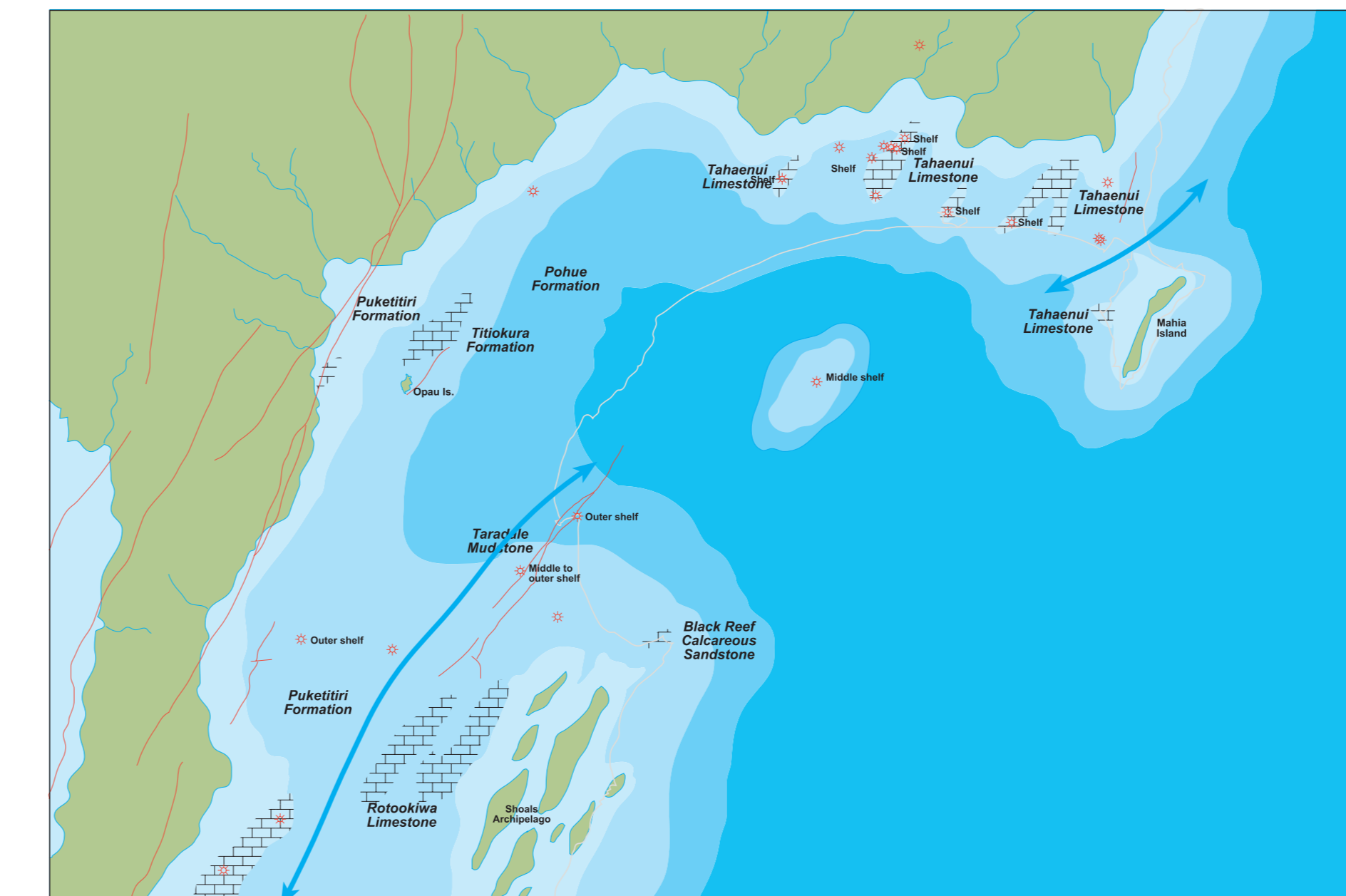
Map 5 c. 4 Ma
UPPER OPOITIAN



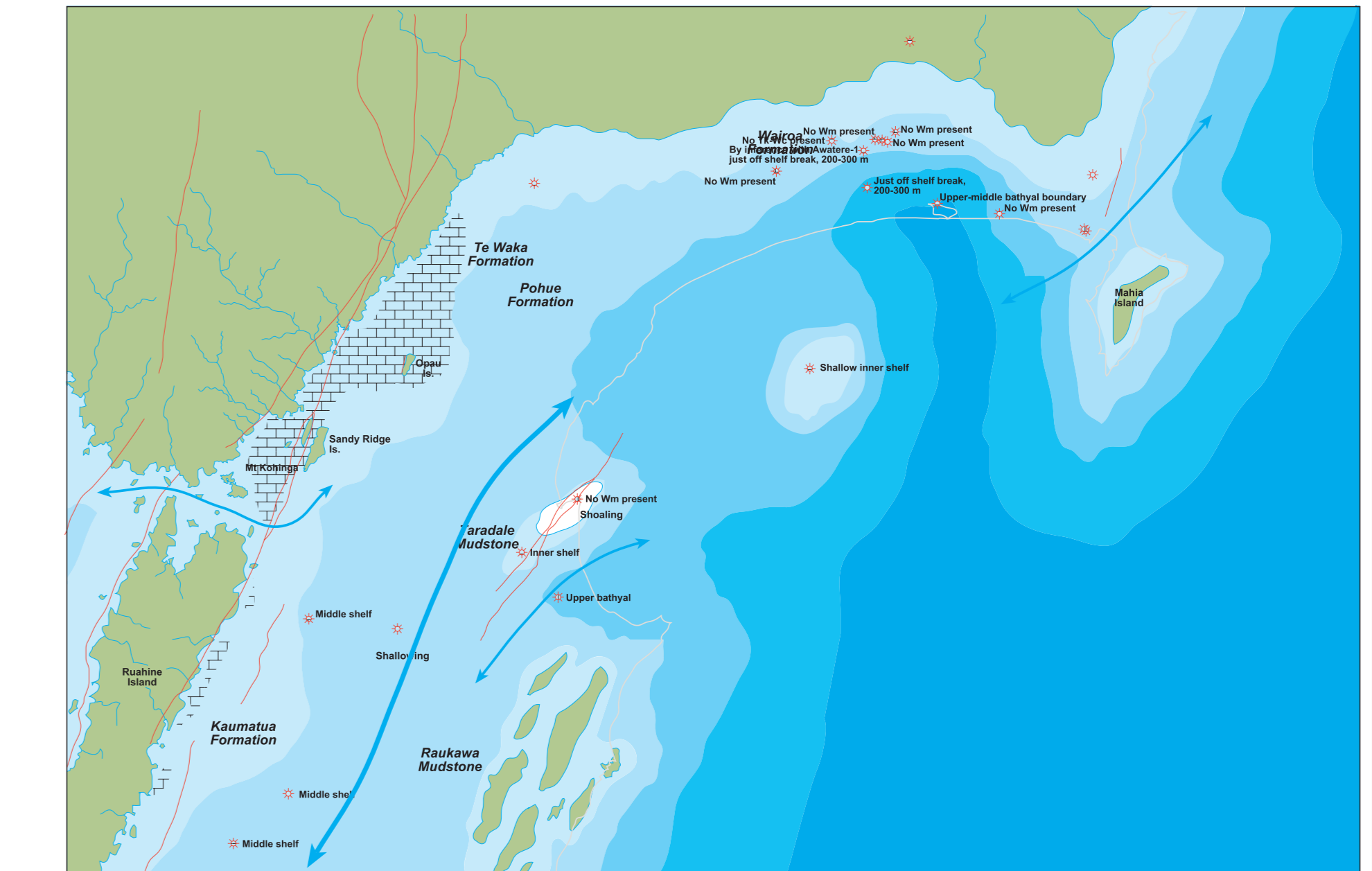
Map 6 c. 3.6 Ma
LOWER WAIPIPIAN



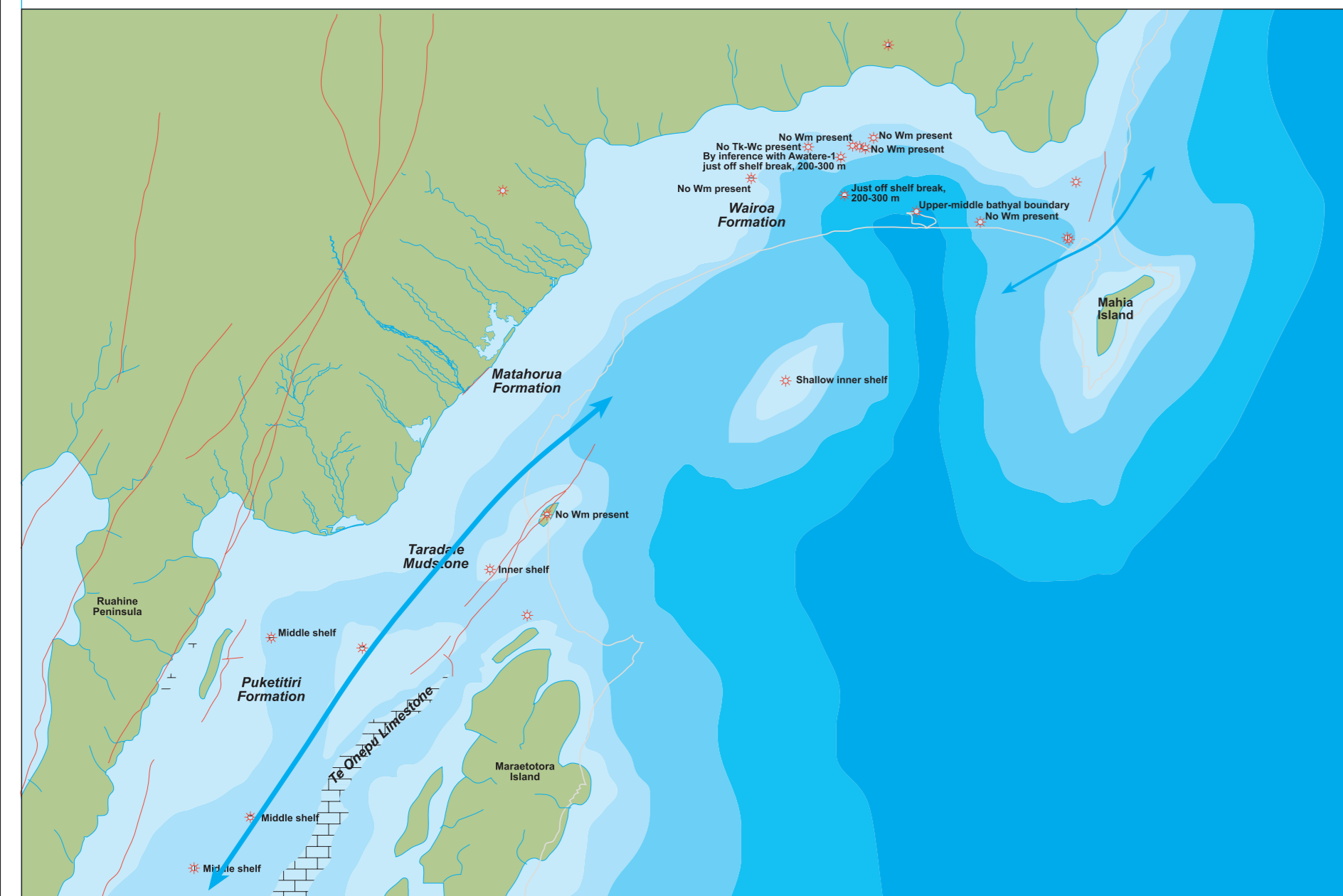
Map 7 c. 3.2 Ma
UPPER WAIPIPIAN



Map 8 c. 3.0 Ma
LOWER MANGAPIAN



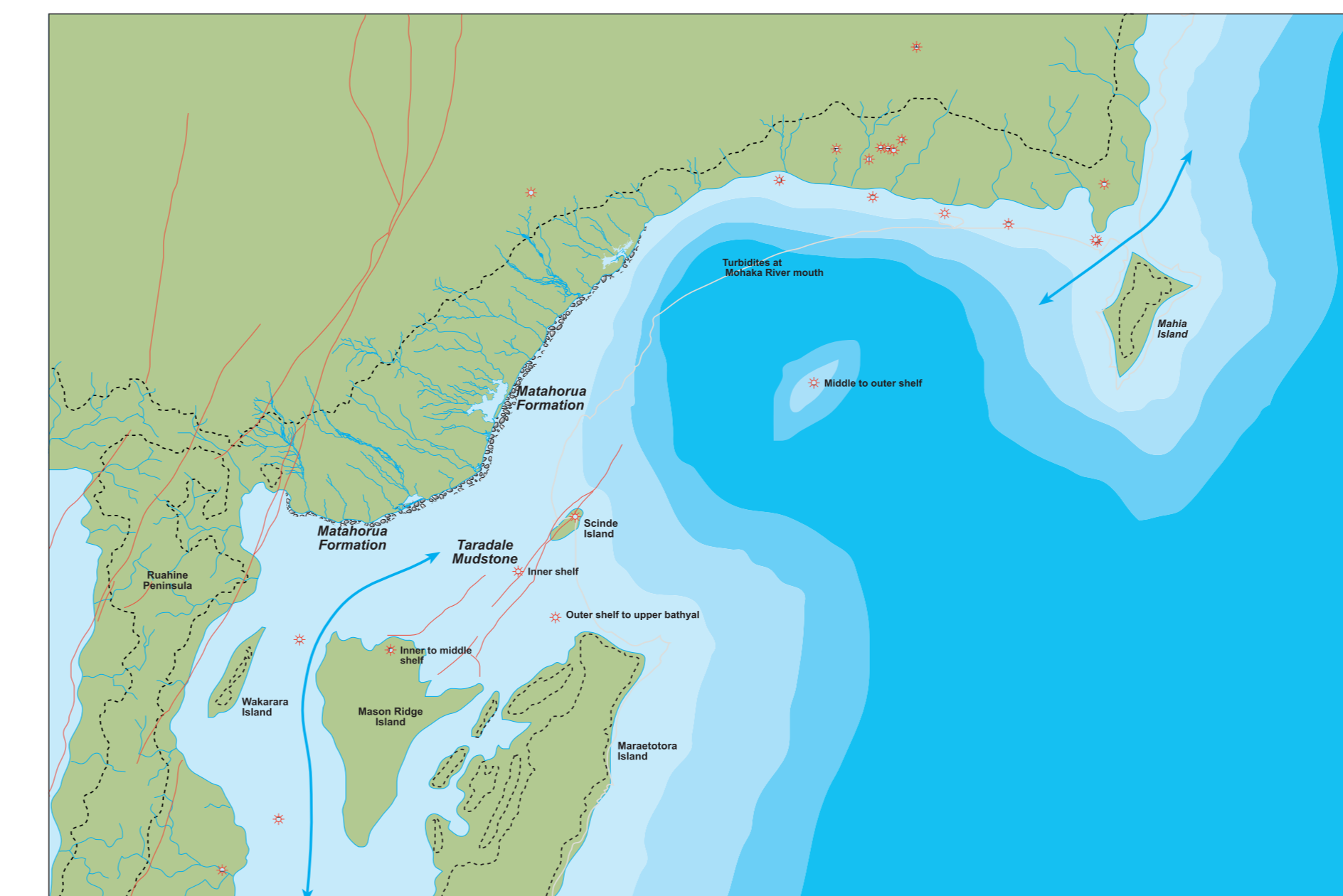
Map 9 c. 2.5 Ma
UPPER MANGAPIAN (sea-level lowstand)



Map 10 c. 2.4 Ma
BASE NUKUMARUAN (sea-level highstand)



Map 11 c. 2.4 Ma
BASE NUKUMARUAN (sea-level lowstand)



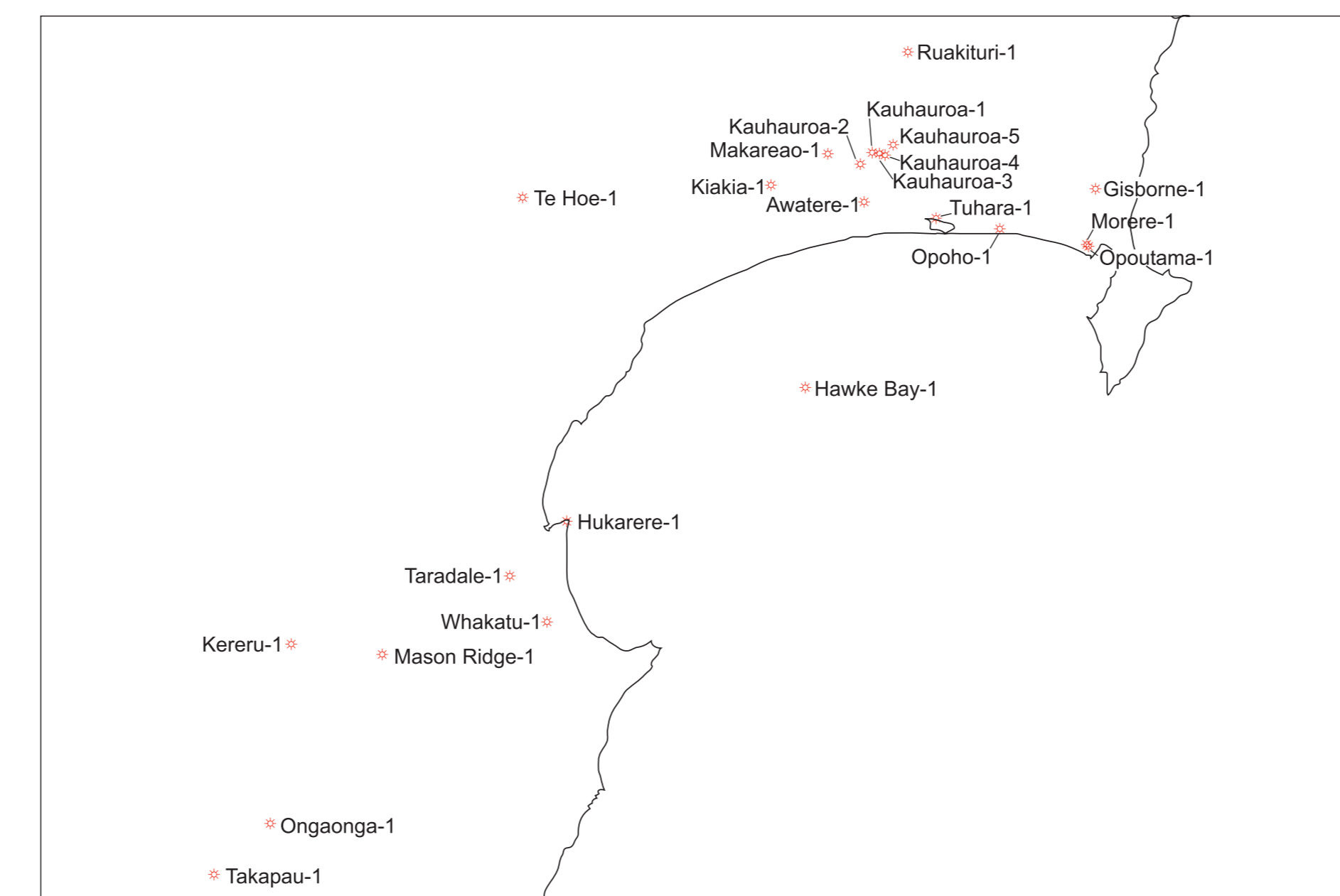
Map 12 c. 2 Ma
MIDDLE NUKUMARUAN (sea-level lowstand)



Map 13 c. 1.7 Ma
UPPER NUKUMARUAN (sea-level lowstand)



Map 14
HYDROCARBON EXPLORATION WELL INDEX MAP



LEGEND

Land	Carbonate banks
Inner shelf	Harbour/estuary
Middle-shelf	Active fault
Outer shelf	River
Upper bathyal	Braided river
Middle to lower bathyal	Highstand shoreline
Shoals, non-deposition	Hydrocarbon exploration well
Shoals, non-deposition	Shoals/non-deposition

Notes about these paleogeographic maps

The positions of rivers, estuaries, and harbours on these maps are inferred, and are present for illustrative purposes. The position of the modern coastline is indicated by the grey line. No allowance has been made for displacement on faults.

Data sources
Darby and Kirby (1969); Leslie (1971 a-c); BP Shell Aquitane Todd Petroleum Development Ltd (1976); Beu et al. (1980); Haywick et al. (1992); Beu (1995) Johnston and Francis (1996); I. A. Browne and Associates Ltd (1998 a-f, 1999 a-c); Westcoast Energy New Zealand Ltd (2001); Field et al. (1997); Collins and Francis (2000); Bland 2001; Greathaus 2001; Bland et al. (2004); Browne (2004).

BIBLIOGRAPHIC REFERENCE
Bland, K.J. and Kamp, P.J.J. 2014. Hawke's Bay forearc basin (eastern North Island, New Zealand): Stratigraphy, biostratigraphy, chronology, geological maps and paleogeography. Ministry of Business, Innovation and Employment, New Zealand, unpublished Petroleum Report PR4883, 66 p.

Enclosure 5
Neogene paleogeographic maps of the Forearc Basin
in central Hawke's Bay

Kyle J. Bland* and Peter J.J. Kamp 2014

Bland, K.J. and Kamp, P.J.J. 2014. Hawke's Bay forearc basin (eastern North Island, New Zealand): Stratigraphy, biostratigraphy, chronology, geological maps and paleogeography. Ministry of Business, Innovation and Employment, New Zealand, unpublished Petroleum Report PR4883, 66 p.

The University of Waikato
* Current address: GNS Science