

Buildings as dangerous spaces: mobilities of emotion and affect in disaster relocation



THE UNIVERSITY OF
WAIKATO
Te Whare Wānanga o Waikato

Gail Adams- Hutcheson, Geography Programme



ARTS & SOCIAL SCIENCES
TE KURA KETE ARONUI

WHERE THE WORLD IS GOING
waikato.ac.nz/fass



Context: Renters and aftershocks



THE UNIVERSITY OF
WAIKATO
Te Whare Wānanga o Waikato

- Mobility is a resource that is differently accessed
- Immediate aftermath 70,000 people left Christchurch (most returned) [Tim Love 2011]
- Renter population more 'mobile'
- +10,000 aftershocks 50 have been over magnitude 5 (and counting...)

Theoretical context



THE UNIVERSITY OF
WAIKATO
Te Whare Wānanga o Waikato



- Politics of mobility (Tim Cresswell 2010)
- Consequences of mobilities (Jon Anderson 2015; David Bissell 2010a/b; Lucy Budd 2011)
- Sara Ahmed (2004) stickiness and movement of emotion
- Motion of emotion (Peter Adey 2008; Mimi Sheller 2004; Sheller & John Urry 2006; Divya Tolia-Kelly 2008)
- Trauma and contagion (Kate Coddington 2016; Loretta Lees 2000; Roger Luckhurst 2008)



Seeing methods as a research journey

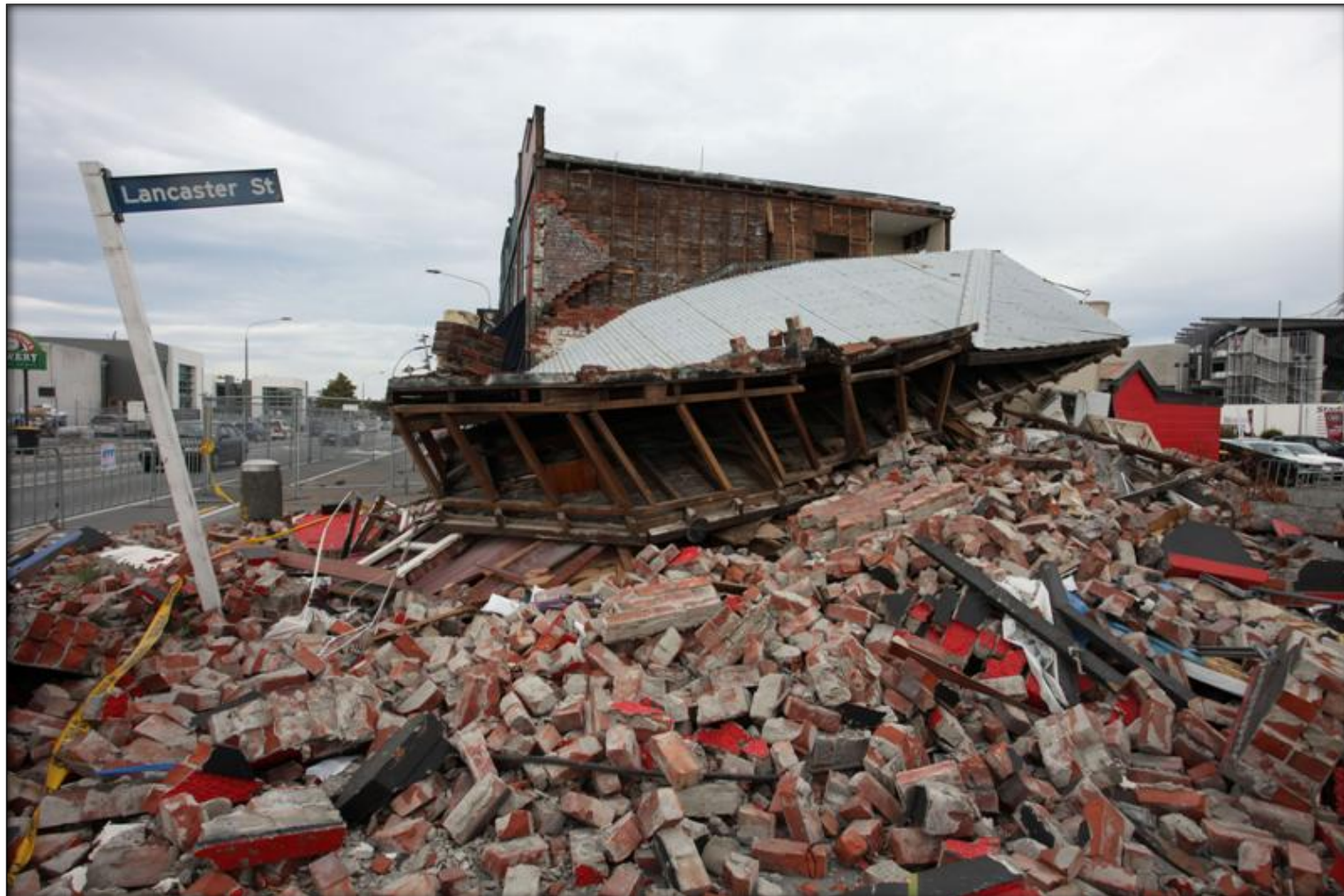
- Participant sensing in Christchurch: (photos, interviews, driving around, orbiter bussing it)
- Semi structured interviews
- Focus group
- Support group:
- *Cantabrians in Waikato*- Spontaneous focus group meetings; Commemoration gatherings
- Follow-up interviews
- 19 families, approx. 62 individuals in the support group



“Earthquakes don’t kill people, buildings do” (England and Jackson 2011)



THE UNIVERSITY OF
WAIKATO
Te Whare Wānanga o Waikato



ARTS & SOCIAL SCIENCES
TE KURA KETE ARONUI

waikato.ac.nz/fass

WHERE THE WORLD IS GOING



Acute spatial awareness



THE UNIVERSITY OF
WAIKATO
Te Whare Wānanga o Waikato



ARTS & SOCIAL SCIENCES
TE KURA KETE ARONUI

waikato.ac.nz/fass

WHERE THE WORLD IS GOING



PTSD: trauma and vibration



THE UNIVERSITY OF
WAIKATO
Te Whare Wānanga o Waikato

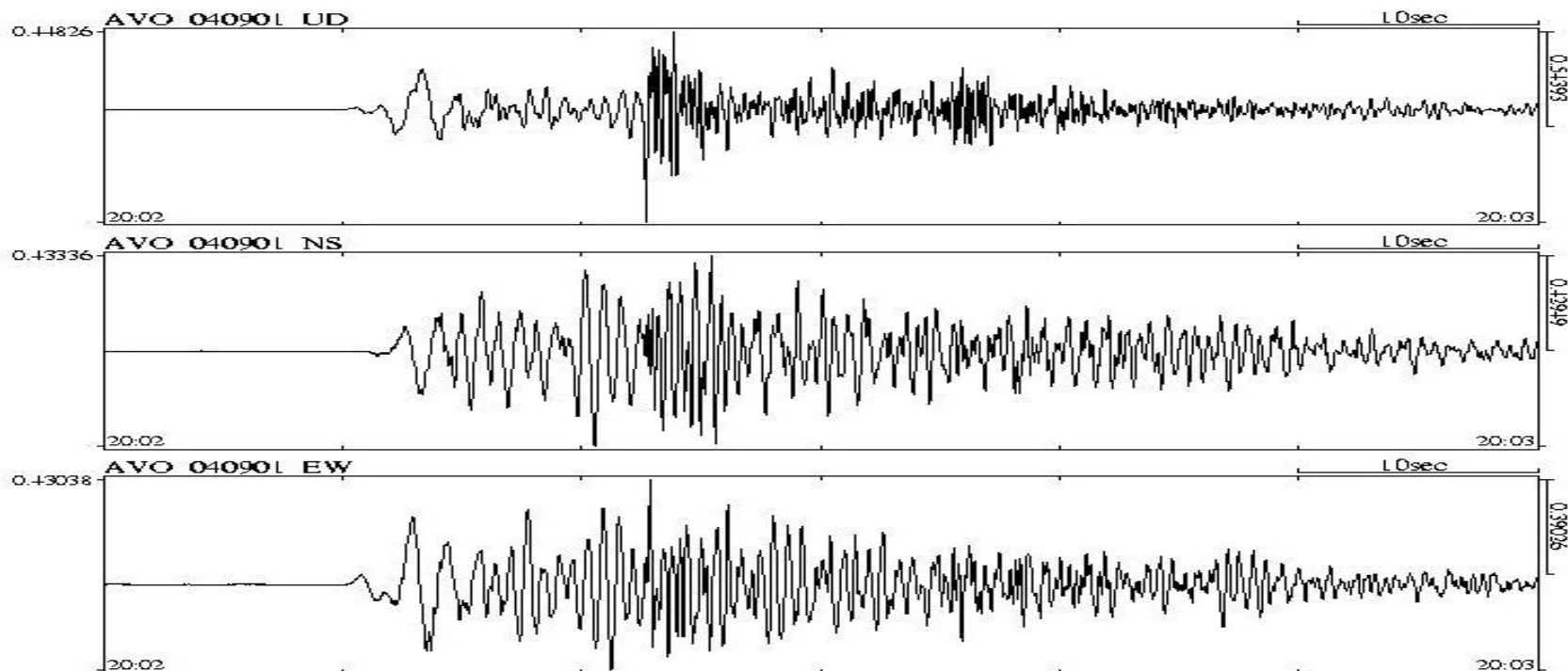




Somatic jolts

Phil:

It's when you hear certain sounds, noises, frequencies and feel vibrations. It's like being at sea and gaining your sea legs then stepping ashore. You spend days getting rid of the urge to counter-balance the sway of the ship. That's the best way to illustrate what it's like to go through months of aftershocks, I've been through thousands of them, and I still feel them in my body (Interview 25 October 2011)



Histories that stick:
Los Angeles and an ecology of fear in the *Western
Bonaventure*



THE UNIVERSITY OF
WAIKATO
Te Whare Wānanga o Waikato



ARTS & SOCIAL S
TE KURA KETE ARONUI

waikato.ac.nz/fass

WHERE THE WORLD IS GOING



Consequences of micro-motion



THE UNIVERSITY OF
WAIKATO
Te Whare Wānanga o Waikato

- Buildings and the earth can: flex, sway, tilt, roll, rupture, break, crack and buckle
- Motion-[akin to disembarkation sickness] remains in the bodies of earthquake survivors
- Like motion, trauma is sticky with affect, in that it frequently colonises the bodies of survivors and can be transmitted to others
- Historical association to seismic events embed in subconscious and can be reignited when similar vibrations are felt
- Traumatic contagion and vibrations push at the boundaries of what it means to be mobilised

References



THE UNIVERSITY OF
WAIKATO
Te Whare Wānanga o Waikato

- Peter Adey, *Mobility* (London: Routledge, 2010) 162-173.
- Sara Ahmed, 2004. *The cultural politics of emotion* (Edinburgh: Edinburgh University Press, 2004) 62-82.
- Sara Ahmed, "Sociable happiness," *Emotion, Space and Society* 1 no. 1 (October 2008): 10-13.
- Jon Anderson, "Exploring the consequences of mobility: reclaiming jet lag as the state of travel disorientation," *Mobilities* 10 no 1: 1-16.
- David Bissell, "Vibrating materialities: mobility-body-technology relations," *Area* 42 no. 4 (December 2010a): 479-486.
- David Bissell, "Passenger mobilities: affective atmospheres and the sociality of public transport," *Environment and Planning D: Society and Space* 28 no.2 (April 2010b): 270–289.
- Stewart Brand, *How buildings learn: what happens after they're built* (London: Viking, 1994), 2.
- Teresa Brennan, *The transmission of affect* (Ithaca: Cornell University Press, 2004), 51-74.
- Lucy Budd, "On being aeromobile: airline passengers and the affective experiences of flight," *Journal of Transport Geography* 19 no. 5 (September 2011), 1010-1016
- Kevin Hannam, Mimi Sheller and John Urry, "Editorial: Mobilities, immobilities and moorings," *Mobilities* 1 no. 1 (March 2006), 1-22.
- Tom Love, "Population movement after natural disasters: a literature review and assessment of Christchurch data," *Sapere Research Group* 17 April 2011, <http://www.srgexpert.com/wp-content/uploads/2015/08/Population-movement-after-natural-disasters-a-literature-review-and-assessment-of-Christchurch-data.pdf> (accessed May, 20, 2016).
- Roger Luckhurst, *The trauma question* (London: Routledge), 3.
- Karen Peters, "Drifting: towards mobilities at sea," *Transactions of the Institute of British Geographers* 40 no. 2 (April 2015), 262-272.
- Barbara Olasov Rauthbaum et al. "Virtual reality exposure therapy for PTSD Vietnam veterans: a case study," *Journal of Traumatic Stress* 12 no.2 (April 1999), 263-271.
- Mimi Sheller, "Automotive emotions: feeling the car," *Theory, Culture and Society* 21 no.4-5 (October 2004), 221-242.
- Mimi Sheller, "The islanding effect: post-disaster mobility systems and humanitarian logistics in Haiti," *Cultural Geographies* 20 no. 2 (April 2013), 185-204.
- Mimi Sheller and John Urry "The new mobilities paradigm," *Environment and Planning A* 38 no.2 (February 2006), 207-226.
- Ed Soja, "Taking Los Angeles apart: some fragments of a critical human geography," *Environment and Planning D: Society and Space* 4 no.3 (September 1986), 255-272
- Sandra Janashak Verbosky and Deborah Ryan, "Female partners of Vietnam veterans: stress by proximity," *Issues in Mental Health Nursing* 9 no. 1 (1988), 95-104.

ARTS & SOCIAL SCIENCES
TE KURA KETE ARONUI