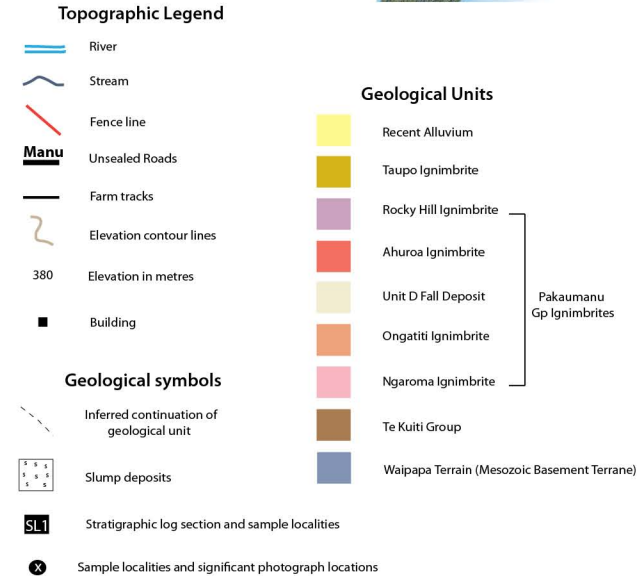
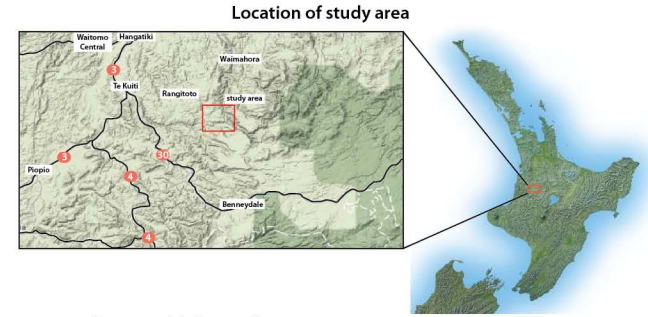
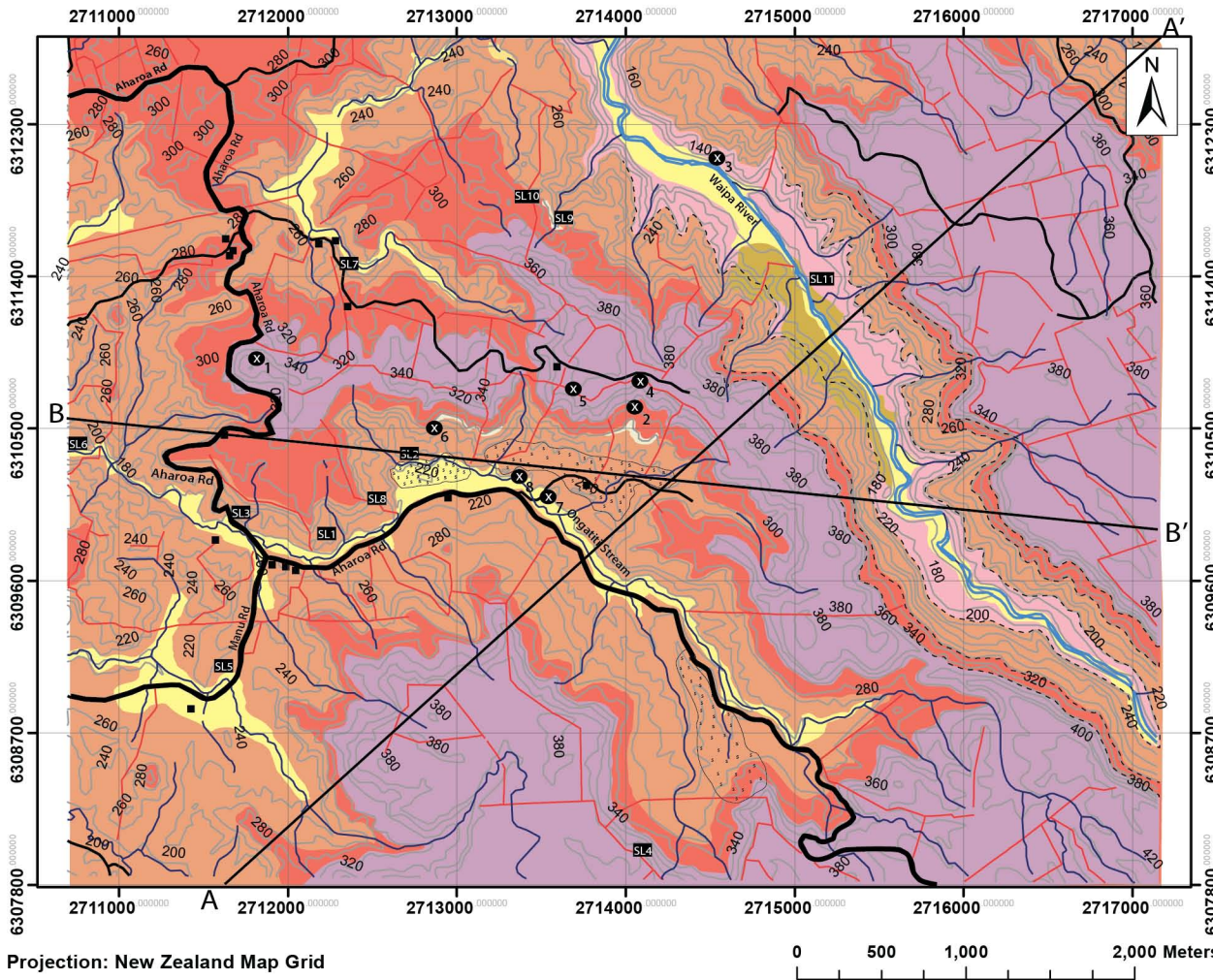
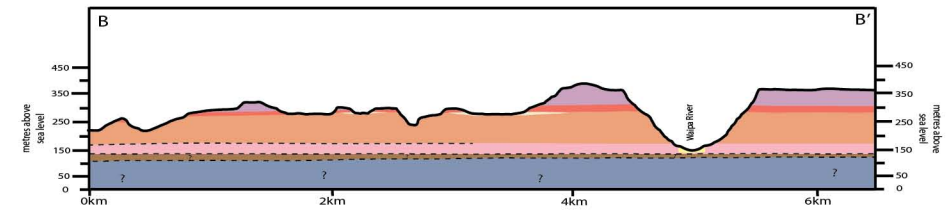
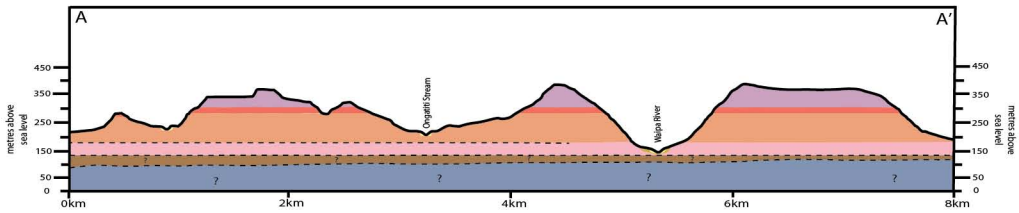
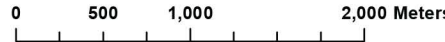


Geological Map of the Ongatiti Valley, Southeast Te Kuiti

Megan Brink, Department of Earth and Ocean Sciences,
University of Waikato, Hamilton, New Zealand



Projection: New Zealand Map Grid



Panorama photograph taken (from location 5) looking to the south of the study area, note the gentle dip to the east of the ignimbrite plateaux.



This map is drawn on the New Zealand Map Projection, a minimum-error conformal projection showing coordinates in metres in terms of the Geodetic Datum 1949. The topographic features on this map are obtained from the LINZ NZMS 260 digital data series. The vertical interval between the contours is 20 metres and the heights are taken above mean sea level. This map covers both part of the Institute of Geological and Nuclear Sciences 1: 250000 geological maps 4 and 5.