



(51) International Patent Classification:

G01R 31/392 (2019.01) G01R 31/385 (2019.01)  
G01R 31/389 (2019.01) G01R 31/36 (2020.01)  
G01R 31/3842 (2019.01)

(21) International Application Number:

PCT/NZ2020/050050

(22) International Filing Date:

13 May 2020 (13.05.2020)

(25) Filing Language:

English

(26) Publication Language:

English

(30) Priority Data:

753706 20 May 2019 (20.05.2019) NZ

(71) Applicant: WAIKATOLINK LIMITED [NZ/NZ];

Ground Floor, B Block University of Waikato, Hillcrest Road, Hamilton, 3216 (NZ).

(72) Inventors: SCOTT, Jonathan Breerton; 17 Hillcrest

Road, Hillcrest, Hamilton, 3216 (NZ). SINGLE, Peter Scott Vallack; 54 Avian Crescent, Lane Cove, Sydney, New South Wales 2066 (AU). HASAN, Rahat; 56 May Street, Hamilton East, Hamilton, 3216 (NZ).

(74) Agent: MURPHY, Simon John et al.; PO Box 9466,

Hamilton, 3240 (NZ).

(81) Designated States (unless otherwise indicated, for every

kind of national protection available): AE, AG, AL, AM, AO, AT, AU, AZ, BA, BB, BG, BH, BN, BR, BW, BY, BZ, CA, CH, CL, CN, CO, CR, CU, CZ, DE, DJ, DK, DM, DO, DZ, EC, EE, EG, ES, FI, GB, GD, GE, GH, GM, GT, HN, HR, HU, ID, IL, IN, IR, IS, JO, JP, KE, KG, KH, KN, KP, KR, KW, KZ, LA, LC, LK, LR, LS, LU, LY, MA, MD, ME, MG, MK, MN, MW, MX, MY, MZ, NA, NG, NI, NO, NZ, OM, PA, PE, PG, PH, PL, PT, QA, RO, RS, RU, RW, SA,

(54) Title: BATTERY PERFORMANCE ASSESSMENT METHOD AND APPARATUS

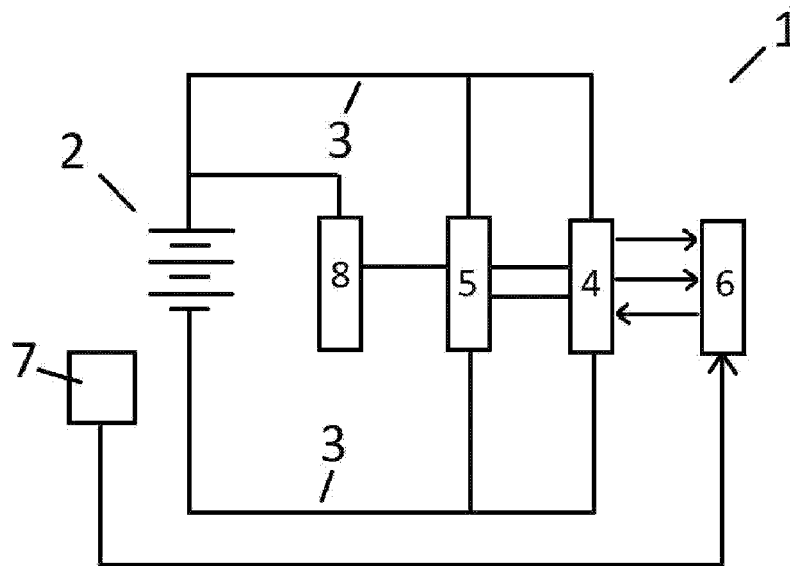


Figure 1b

(57) Abstract: In one aspect the invention provides an assessment apparatus which includes two terminal connectors configured to electrically connect the assessment apparatus to the positive and negative terminals of a battery being assessed. The apparatus also includes a response measurement system configured to measure the terminal voltage and current of the battery when supplied with at least one alternating test current having a frequency less than 1 Hz and/or less than an impedance transition frequency associated with the battery being assessed. Also provided is a processor in communication with the response measurement system and being configured to output a performance assessment indicator for the battery being assessed by calculating at least one impedance for the battery using terminal voltage and current measurements communicated by the response measurement system.



SC, SD, SE, SG, SK, SL, ST, SV, SY, TH, TJ, TM, TN, TR,  
TT, TZ, UA, UG, US, UZ, VC, VN, WS, ZA, ZM, ZW.

- (84) Designated States** (*unless otherwise indicated, for every kind of regional protection available*): ARIPO (BW, GH, GM, KE, LR, LS, MW, MZ, NA, RW, SD, SL, ST, SZ, TZ, UG, ZM, ZW), Eurasian (AM, AZ, BY, KG, KZ, RU, TJ, TM), European (AL, AT, BE, BG, CH, CY, CZ, DE, DK, EE, ES, FI, FR, GB, GR, HR, HU, IE, IS, IT, LT, LU, LV, MC, MK, MT, NL, NO, PL, PT, RO, RS, SE, SI, SK, SM, TR), OAPI (BF, BJ, CF, CG, CI, CM, GA, GN, GQ, GW, KM, ML, MR, NE, SN, TD, TG).

**Published:**

- *with international search report (Art. 21(3))*
- *in black and white; the international application as filed contained color or greyscale and is available for download from PATENTSCOPE*

## **BATTERY PERFORMANCE ASSESSMENT METHOD AND APPARATUS**

### **Field of the Invention**

5 This invention relates to a battery performance and quality assessment method and apparatus. In preferred embodiments the invention may be used to provide a battery state of health assessment.

### **Background of the Invention**

10

It is increasingly common for electrical devices and systems to use power supplies which incorporate batteries. Batteries are used in a wide range of applications, from communications and entertainment electronics through to electric vehicles and satellite power systems.

15

Over time the performance of a battery will degrade as it completes a large number of charge and discharge cycles. The performance of the battery can also be impacted by exposure to excessive heat or cold, humid conditions or by being overcharged or severely discharged. In many applications it is important to know what the condition or state of health of a battery is to potentially forecast how long a battery can continue to operate at a desired level of performance.

20

For example, in the case of uninterruptible power supplies batteries are used to prevent the failure of computer systems disconnected from mains power electrical supplies. It is critical to ensure that the batteries used have a robust state of health to be able to service loads which could be placed upon them at any time.

25

The terminal voltage of the battery can be measured, and an assessment made of the amount of charge held by the battery. However, this measurement requires the battery to be disconnected from the load it normally services, and terminal voltage in isolation does not provide a useful picture of battery state of health.

30

35

For this reason, prior art battery performance assessment methods use testing procedures to investigate battery impedance, which provides a better

indicator of the physical state of the battery cells and hence its state of health. For example, in some prior art assessment techniques it is a common practice to apply a 1 kHz stimulation signal to a battery to attempt to measure its impedance.

5

However again one or more battery impedance measurements recorded at the same time will not provide an effective indicator of battery state of health. Standard practice with current state-of-the-art health assessment methods is to record multiple battery impedance measurements over a long period of time in an attempt to identify a baseline impedance and to identify trends in the change of this baseline impedance.

10

Unfortunately, while results obtained from current state-of-the art assessment methods are reasonable, the accuracy of the actual assessment result itself is questionable. This is indicated by the failure of some batteries well prior to their predicted end dates.

15

It would therefore be of advantage to have an improved method and apparatus for assessing the performance of a battery (and possibly doing so with an increased sensitivity or accuracy) which addressed any or all the above issues, or at least that provided an alternative choice to the prior art. In particular it would be of advantage to have a technology available for assessing the performance and quality of the battery which did not require multiple independent measurements to be recorded at different times over an extended period of time, and/or which did not require the battery to be disconnected from the load normally serviced. Improvements over the prior art which provided more accurate performance assessments would also be of advantage.

20

25

### 30 **Disclosure of the Invention**

According to one aspect of the present invention there is provided a battery performance assessment apparatus which includes two terminal connectors configured to electrically connect the assessment apparatus to the positive and negative terminals of a battery being assessed, and

35

a response measurement system configured to measure the terminal voltage and current of the battery when supplied with at least one alternating test current having a frequency less than 1 Hz and/or less than an impedance transition frequency associated with the battery being assessed, and  
5 a processor in communication with the response measurement system and being configured to output a performance assessment indicator for the battery being assessed by calculating at least one impedance for the battery using terminal voltage and current measurements communicated by the response measurement system.

10

According to another aspect of the present invention there is provided a battery performance assessment apparatus which includes two terminal connectors configured to electrically connect the assessment apparatus to the positive and negative terminals of a battery being  
15 assessed, and

15

a test current source configured to supply at least one alternating test current to the battery being assessed, said at least one alternating test current having a frequency less than 1 Hz and/or less than an impedance transition frequency associated with the battery being assessed, and

20

a response measurement system configured to measure the terminal voltage and current of the battery when supplied with said at least one alternating test current, and

25

a processor in communication with the response measurement system and being configured to output a performance assessment indicator for the battery being assessed by calculating at least one impedance for the battery using terminal voltage and current measurements communicated by the response measurement system.

30

According to a further aspect of the present invention there is provided a battery performance assessment apparatus substantially as described above wherein the processor is programmed to implement a circuit simulation model which uses the terminal voltage and current measurements communicated to the processor as input parameters to define at least one constant phase element fractional capacitor to simulate the battery being  
35 assessed.

35

According to another aspect of the present invention there is provided a battery performance assessment apparatus substantially as described above wherein the processor is programmed to implement a circuit simulation model which uses the terminal voltage and current measurements  
5 communicated to the processor as input parameters to define a plurality of fractionally arranged constant phase element fractional capacitor components to simulate the battery being assessed.

The present invention provides a battery performance assessment  
10 apparatus, in addition to a method of assessing the performance of a battery. Additional aspects of the invention encompass the provision of an improved circuit simulation model implemented through computer executable instructions run on a processor or similar programmable computer system utilised by the invention.

15 Reference in general throughout this specification will also be made to the invention being used primarily to assess the performance of a battery. Those skilled in the art will appreciate that references made to batteries throughout this specification encompasses both the assessment of the performance of a  
20 single electrical cell, or an array of cells connected together. Those skilled in the art will therefore appreciate that references made to the invention working with a battery also encompasses the invention assessing the performance of a single electrical cell.

25 Furthermore, reference will also be made to the provision of a test current source which is used to supply one or more alternating test currents in association with the present invention. Those skilled in the art will appreciate that this test current source may be formed by dedicated stand-alone components in some embodiments, and/or where the normal electrical load  
30 or load is connected to the battery in other embodiments.

The assessment apparatus provided by the invention employs terminal  
connectors to engage at least a test current source and a response  
measurement system to a battery being assessed. Those skilled in the art  
35 will appreciate that any appropriate form of connector may be used to form terminal conductors which can allow electrical current flows to and from the

battery and which allow for the measurement of various electrical parameters of the battery.

5 The assessment apparatus provided by the invention also incorporates a processor in communication with a response measurement system.

10 In some embodiments this processor may be physically connected to other elements of the apparatus, potentially being enclosed within a single common housing with these components.

15 In other embodiments the processor may be located remotely from the battery, test current source and response measurement system, and may be configured to receive information from, or transmit operational commands to various other components of the invention.

20 In yet other embodiments the processor may be implemented with a distributed architecture where a number of separate hardware components are connected together to form the processor, these components potentially being located remote from one another or from the battery being assessed.

25 Those skilled in the art will appreciate that well-known information technology systems may be used to implement this remote processor architecture, and furthermore the processor itself may be implemented across or by several separate microprocessors or integrated circuits.

30 Reference throughout this specification will however be made to a processor being implemented by a microprocessor or microcontroller physically connected to at least the response measurement system of the apparatus. Again those skilled in the art will appreciate that other circuit architectures are also envisioned and within the scope of the present invention.

35 The processor integrated into the assessment apparatus is configured to output a performance assessment indicator for a battery being assessed. Those skilled in the art will appreciate that the form, format or information incorporated within this indicator may vary over different embodiments of the invention. The specific performance criteria defined for a battery may differ depending on the application in which the battery is used – for

example, performance may be assessed in some embodiments by the maximum current which can be supplied, or alternatively by the maximum charge storage capacity.

- 5 In one embodiment a performance assessment indicator may be provided by a simple Boolean yes - no, good - bad output, whereas in other embodiments this indicator may take the form of a percentage estimated lifespan time period or estimated number of charge/discharge cycles remaining before the battery is unable to meet a set performance criteria
- 10 requirement. An indicator may also take the form of a measured or derived value for an electrical parameter of the battery, for example being battery fractional capacitance. In yet other embodiments an indicator may take the form of a percentage achieved for a target performance criteria, such as – for example – assessed battery fractional capacitance compared to a target
- 15 fractional capacitance, or maximum current delivered compared to a target current value. An indicator or indicators may also take the form of a graphical representation, plot or graph making a comparison between performance assessments undertaken at different times.
- 20 Those skilled in the art will also appreciate that a performance assessment indicator may be determined using voltage and current measurements recorded during a single continuous measurement period in response to several different frequencies of test currents, or multiple measurements recorded at during different measurement periods, again in response to the
- 25 same test current. Those skilled in the art will appreciate that a single measurement period may span a variable length of time depending on the number of and frequencies of test currents applied during this period. A performance assessment indicator may also be determined using voltage and current measurements recorded in response to the use of several
- 30 different frequencies of test currents, be they applied at approximately the same or at different times.

Reference in general will be made throughout this specification to the performance indicator generated by the invention identifying the state of

35 health of a battery. Those skilled in the art will however appreciate that other metrics for battery performance may also be assessed in other



embodiments and may include an assessment of the quality of the battery being assessed.

- 5 In a variety of embodiments battery impedance may be calculated from voltage and current measurements recorded in response to the use of several different frequencies to test currents, and these impedance values can be used to calculate, or determine one or more performance assessment indicators.
- 10 For example in one particular embodiment a performance assessment indicator may be calculated using the rate of change of calculated impedance values with frequency. This rate of change of impedance values recorded using test currents below the impedance transition frequency or the less than 1 Hz can be used to indicate the efficiency of a battery, being the ratio  
15 of charging energy supply to the battery compared to stored energy available from the battery. A relatively high rate of change may be associated with a battery that has a higher efficiency than a battery with a lower rate of change value.
- 20 In another embodiment a performance assessment indicator may be calculated using the lower-frequency impedance values plotted with frequency coupled to the high-frequency impedance values. The values of impedance values recorded using test currents below the impedance transition frequency suggest a straight line. Where this straight line crosses  
25 the value measured at high frequencies is an estimate of the impedance transition frequency. A relatively high impedance transition frequency may indicate that a battery has a reduced ability to sustain high power energy delivery.
- 30 In yet another embodiment a performance assessment indicator may be calculated using at least one impedance zero offset value. These values can represent the magnitude of impedances recorded for a battery using test currents below the impedance transition frequency. In such embodiments a performance assessment indicator representative of the maximum charge  
35 capacity of the battery may be evaluated by, for example, extrapolating a y-axis intercept value for plotted impedance measurements against test current frequency, or alternatively comparing impedance values at a

selected predetermined frequency value below the impedance transition frequency. A relatively low impedance zero offset value or values may indicate that a battery has a greater storage capacity than a battery associated with a higher zero offset value or values.

5

In yet another embodiment a performance assessment indicator may be calculated using a transition bandwidth value. This impedance transition frequency bandwidth value can be found by identifying the frequency range where a relatively constant rate of change of the impedance of the battery at low frequencies transitions to an alternative or different rate of change of impedance at higher frequencies. The bandwidth of this transition zone can in some embodiments provide a general indication of the quality of the manufacture of the battery being assessed, the precision or tolerances used in the components making of the battery and/or the purity of the compounds employed to form the battery. In such embodiments a better quality battery may exhibit a smaller transition bandwidth value than a lower quality battery.

Those skilled in the art will appreciate that in various embodiments performance indicators may also be derived from combinations of rates of impedance change, transition frequency values, zero offset values and transition bandwidth values. This information can be used as parameters to a range of models or calibrations developed for specific battery constructions and may provide performance indicators appropriate to a variety of different battery performance characteristics.

In a preferred embodiment a battery performance assessment apparatus may also include a temperature sensor which in use is placed in close proximity to the battery being assessed. In such embodiments this temperature sensor may provide a measurement of the battery temperature to the processor to improve the accuracy of calculations undertaken to assess the performance of the battery. This temperature information can also be used in combination with a calibration undertaken for the form or type of the battery being assessed to apply corrections to measurements undertaken by the response measurement system.

The assessment apparatus provided by the invention includes a response measurement system which is used to measure the terminal voltage and current of the battery being assessed. These measurements are made when the battery responds to a test current.

5

In a preferred embodiment the response measurement system may record a plurality of measurements of both terminal voltage and current over the time period when a particular test current is applied to the battery. Those skilled in the art will appreciate that a range of prior art voltage and current measurement technologies may be employed with a required accuracy, resolution and precision depending on the application in which the invention is employed.

10

In one embodiment, the assessment apparatus provided by the invention preferably includes a test current source configured to stimulate the battery being assessed with at least one alternating test current.

15

In other embodiments the application of at least one single cycle of the alternating test current ensures that the battery experiences both charging and discharging.

20

In yet another embodiment, the application of at least one single cycle of the alternating test current ensures that the battery experiences either charging or discharging depending on the 'at use' charging or discharging operation of the battery.

25

Those skilled in the art will appreciate that a test current source may be provided by a number of different arrangements of components in various embodiments.

30

In a preferred embodiment a test current source may be provided by a dedicated alternating current generation circuit. Existing technology in this field may be readily utilised to implement this form of component.

35

In an alternative embodiment a test current source may be formed by or incorporates switching electronics connected across two or more batteries. In such embodiments two or more of these batteries may have their state of

health assessed concurrently, where current supplied from one battery can be used to charge the other battery and vice versa.

5 In yet other alternative embodiments the regular load and charging circuits normally connected to a battery during its usual application may be utilised as a test current source. Again these existing circuits can be connected to the battery using switching technology to charge and discharge the battery being assessed at the frequency required of an alternating test current.

10 In a preferred embodiment the processor incorporated within the assessment apparatus may be configured to control the operation of the test current source, and in particular the magnitude and frequency of the alternating test current applied to a battery. The processor may also control the time period over which a particular test current is applied. Furthermore,  
15 in various embodiments a processor may be configured to ensure that a plurality of alternating test currents with different frequencies are applied to the battery being assessed.

Reference throughout this specification will also be made to the processor  
20 being used to control the operation of the test current source and specifically being used to apply a number of alternating test currents with different frequencies. However those skilled in the art will appreciate that in other embodiments the processor integrated with the assessment apparatus need not necessarily function in this way. For example, in some alternative  
25 embodiments the test current source may include internal control systems configured to apply one or potentially a number of predetermined alternating test currents at selected frequencies.

30 In a preferred embodiment the assessment apparatus may undertake a test procedure which applies a plurality of alternating test currents with different frequencies. For example, in some embodiments the test current source may sequentially apply a set of alternating test currents one after the other while the response measurement system records battery terminal voltage and current. However, in one or more alternative embodiments a test current  
35 source may apply a composite test current signal. This composite test current can be formed from the summation of two or more separate

alternating test currents at particular frequencies of interest in the operation of the invention.

5 In a preferred embodiment the assessment apparatus may apply a test current for at least one cycle or period of the frequency of the test current. Applying these currents for a full cycle allows measurements to be captured across the entire range of charging and discharging operations experienced by the battery. In additional embodiments test currents may also be applied  
10 over many cycles to allow detailed measurements to be captured and to potentially mitigate errors in such measurements. In yet other embodiments a full cycle of measurements related to a particular test current may be provided from the merger of two or more measurements undertaken at different times, but which together show the batteries response to the entire period of the test current waveform.

15 The assessment apparatus provided by the invention is used to apply alternating test currents that have frequencies less than 1Hz or less than an impedance transition frequency associated with the battery being assessed.

20 This impedance transition frequency or frequencies can be determined experimentally for the form, construction or type of the battery being assessed. A plot can be made of measurements completed of battery impedance over a range of frequencies, preferably extending to below 1  $\mu$ Hz and up to at least 1-10 Hz. This impedance transition frequency zone can be  
25 found by identifying the frequency range where a relatively constant rate of change of the impedance of the battery at low frequencies transitions to an alternative or different rate of change of impedance at higher frequencies. By identifying the impedance transition frequency or frequencies of the battery the invention can then apply test currents with lower frequencies.  
30 These low frequency test currents are used by the invention to assess the performance of the battery.

In a preferred embodiment the magnitude of the peak or RMS current of the alternating test current may be varied based on the frequency of the  
35 alternating test current. In various embodiments an alternating test current may be applied for at least one cycle, which at low frequency values may result in relatively long charge and discharge times. The invention may

therefore manage the magnitude of the alternating current applied to a battery during the assessment process to ensure that it is not overcharged or severely discharged and damaged during assessment. Furthermore, this approach also ensures that measurements are not made of a response to a test current when the battery has an extremely low or high state of charge.

In a preferred embodiment the magnitude or amplitude of an alternating test current may be set based on the frequency of the signal being applied and the capacity of the battery being assessed. For example in some embodiments the test current applied may only deliver or remove approximately 10 percent of the charge capacity of the battery. In yet other embodiments only 1 percent of the charge capacity of the battery may be delivered or removed by a test current.

In some embodiments the assessment apparatus may be configured to execute a preliminary charge state fixing process prior to applying an alternating test current to a battery. In such embodiments the apparatus may be configured to apply a charging current at a voltage which provides a predictable state of charge in the battery. Charge may be supplied to the battery to preferably charge it to approximately the mid-point of its capacity, thereby minimising the potential for the battery being overcharged or over-discharged by the application of an alternating test current.

Preferably the processor provided with the assessment apparatus may be used to calculate a plurality of impedance values for the battery, each of these impedances being associated with a particular frequency alternating test current. These impedance values can be used in some embodiments by the processor as input parameters to a circuit simulation model run by the processor which aims to model and predict the characteristics of the battery. However in other embodiments performance indicators may be determined using these impedance values without the use of a circuit simulation model, as discussed above.

In a preferred embodiment the processor may be used to implement a circuit simulation model which uses these impedance values to define at least one constant phase element fractional capacitor to simulate the characteristics of the battery. Those skilled in the art will also appreciate

that this component can be described as a fractional capacitor or a constant phase element. In a further embodiment the circuit simulation model may define or model the battery using a single constant phase element fractional capacitor - also known as a 'CPE' - in combination with a single series  
5 resistance.

In such embodiments the parameters of the CPE component of this model may be defined using the rate of change of calculated impedance values with frequency, and the zero offset of calculated impedance values applied  
10 against frequency. Preferably the additional series resistance of this model may be defined by the resistance of the battery, determined through a measurement of the terminal voltage and current exhibited when a direct current signal is applied to the battery.

15 In a further embodiment the accuracy of the simulation model run by the processor may be improved by substituting the above-referenced single constant phase element fractional capacitor for an equivalent set of fractionally arranged constant phase element fractional capacitor components. In such embodiments the characteristics determined for the  
20 above referenced single CPE component may be substituted into a replacement split assembly which defines 'n' smaller CPE components, each of which has the same phase but an 'n' times lower admittance characteristic. This equivalent split assembly may be used to replace a single CPE component with n smaller CPE components,  $CPE/n$ , connected in parallel  
25 with an intervening resistance  $R_x/n$ .

The present invention may provide many potential advantages over the prior art.

30 In various embodiments the present invention can provide improvements in the assessment of the performance of batteries through utilising a set of measurements captured over a single continuous time period. Existing technology may be used in the implementation of the method of the invention to capture these measurements and to calculate a performance  
35 indicator.

Furthermore in some embodiments existing battery charging and discharging infrastructure may be utilised to stimulate the battery with a test current or currents at appropriate frequencies from which the invention can derive such performance information.

5

In various embodiments the invention may facilitate a method of assessment which may not require a battery to be disconnected from its normal load environment.

10 In yet further embodiments, the measurements made have improved sensitivity to small changes. This sensitivity can be utilised to provide more accurate performance metrics of the battery being measured. The increased sensitivity of the measurements obtained over time should enable someone skilled in the art to obtain a more reliable prediction of battery failure within  
15 a given time window of monitoring.

While performance is one metric by which state of health is measured, quality may also be a valuable metric that could be measured using the present invention. The measurements taken can provide an indication of the  
20 true efficiency of the return power and power density of a battery in operation. Accordingly, along with other performance metrics such as fractional capacitance, someone skilled in the art could utilise this method to determine the quality of a battery.

### 25 **Brief description of the drawings**

Additional and further aspects of the present invention will be apparent to the reader from the following description of embodiments, given in by way of example only, with reference to the accompanying drawings in which:

30

- Figure 1a shows a schematic circuit diagram of a battery performance assessment apparatus as provided in accordance with one embodiment of the invention,
- Figure 1b shows a further schematic circuit diagram of a battery  
35 performance assessment apparatus as provided in accordance with another embodiment of the invention,



- Figure 2 shows a flowchart of operational steps executed by the assessment apparatus illustrated with respect to figures 1a and 1b,
- Figure 3a shows a plot of impedance against frequency for a generic battery and the identification of at least one impedance transition frequency for this battery,
- Figure 3b shows a plot of impedance against frequency for both a Lithium-ion battery (triangle symbol) and a Lead-acid battery (inverted triangle symbol),
- Figure 3c shows a plot of impedance against frequency and phase for a generic battery where the temperature has been varied (indicated by solid symbols),
- Figure 4a shows a flowchart of calculation steps performed by the processor shown with respect to figure 1a to determine a state of health-based performance assessment indicator, and
- Figure 4b shows a flowchart of calculation steps performed by the processor shown with respect to figure 1b to determine a state of health-based performance assessment indicator, and
- Figures 5a and 5b show exemplary representations of equivalent circuit models used in a circuit simulation model implemented in a further aspect of the invention, and
- Figure 6 provides an indicative comparative plot of current against time for different frequencies of test current provided in accordance with another aspect of the invention, and
- Figure 7 provides an indicative plot of impedance against frequency as used to identify a transition frequency value in various embodiments, and
- Figure 8 provides an indicative plot of impedance against frequency comparing measurements from two different batteries exhibiting different zero offset values.

Further aspects of the invention will become apparent from the following description of the invention which is given by way of example only of particular embodiments.

## Best modes for carrying out the invention

Figure 1a shows a schematic circuit diagram of a battery performance assessment apparatus 1 as provided in accordance with one embodiment of the invention. The apparatus 1 is connected to a battery 2 by a pair of terminal connectors 3. These terminal connectors provide positive and negative terminal connections to a test current source 4 and a response measurement system 5.

10 The test current source 4 is configured to supply a set of alternating test currents to the battery, where each of these test currents have a frequency less than an impedance transition frequency, as discussed in more detail with respect to figure 3. Each of these alternating test currents is supplied to the battery over several cycles of the frequency selected for the current and  
15 current magnitudes are fixed to prevent overcharging or over discharging of the battery.

The response measurement system 5 is configured to measure the terminal voltage and current of the battery when supplied a test current

20 Each of the test current source and response measurement systems are connected to and housed in combination with a processor 6. The processor 6 controls the operation of the test current source 4 and receives voltage and current measurements from the response measurement system 5. The  
25 processor 6 is also connected to a temperature sensor 7 which is located close to the battery 2 and is used to provide an indication of the temperature of the battery.

The processor is configured to output a state of health assessment indicator  
30 for the battery by calculating at least one impedance for the battery using the received terminal voltage and current measurements. The steps undertaken in this process are discussed in more detail with respect to the flowchart of figure 4a.

35 Figure 1b shows a further schematic circuit diagram of a battery performance assessment apparatus as provided in accordance with another embodiment of the invention. This circuit is similar in many respects to that

shown with respect to figure 1a and also incorporates terminal connectors 3 engaged with a battery 2 in addition to a test current source 4.

5 In the embodiment shown a voltage measurement circuit 5 is connected across the terminals 3 in addition to being connected through to a current measurement circuit 8. A processor 6 is provided with input and output connections to these components, as illustrated by the communications arrows shown. The processor can issue operational commands to the current source 4, while receiving current and voltage measurements from the  
10 voltage and current measurement circuits 5, 8 - as well as temperature measurements from a temperature sensor 7.

Figure 2 shows a flowchart of operational steps executed by the assessment apparatus illustrated with respect to both figures 1a and 1b.

15 In the embodiment shown the first step A of this method is implemented by an activation command being received from a user.

At step B the temperature sensor connected to the housing of a battery  
20 being assessed is polled and temperature information received in reply is sent to the processor memory.

At step C the processor commands the current source to apply the first of a series of alternating test currents to the battery, each current having a  
25 specific frequency and peak current amplitude. The processor also controls the time period each test current is applied over.

At step D the response measurement system is used to record a series of battery terminal voltage and current measurements while this test current is  
30 being applied. This set of measurements is sent to the processor memory.

At step E a test is applied to determine if the test current which was just used is the last in the series of test currents to be applied to the battery. If this is not true step F is executed to increment through a list of alternating  
35 test currents and to read from the processor memory the particulars of the next test current to be applied at step C.

If the recently applied test current is the last in the sequence of test currents step G is executed where the processor calculates a state of health indicator, as discussed in more detail with respect to figure 4.

- 5 Figure 3a shows a plot of impedance against frequency for a generic battery and the identification of at least one impedance transition frequency for this battery.

10 As can be seen from figure 3a the rate of change of the battery impedance drops substantially from low frequencies to high frequencies. This behavioural change occurs in the transitional zone centred around  $10^{-3}$  Hz. The form of plot shown with respect to figure 3 can be used to identify a band of frequencies which define this transitional zone so the invention can supply lower frequency alternating test currents.

15

Figure 3b shows a plot of impedance against frequency for both a Lithium-ion battery (indicated by the triangle symbol) and a Lead-acid battery (indicated by the inverted triangle symbol).

- 20 As can be seen from figure 3b different types of battery will show different transition frequency characteristics and the transition points may shift dependent on battery type, size and quality.

25 Figure 3b also highlights the slope of the curve below the transition frequency. The slope indicates loss in a battery, with a smaller slope being associated with lower efficiency of returned power and lower power density. It could therefore be inferred from Figure 3b that the Lead-acid battery featured therein is of a lesser quality than that the Lithium-ion battery shown.

30

- 35 Figure 3c shows a plot of impedance against frequency and phase for a generic battery where the temperature has been varied. As can be seen from Figure 3c, a change in temperature results in a shift in the slope, which is constant with the understanding that battery performance can be dependent on temperature.

Figure 4a shows a flowchart of calculation steps performed by the processor shown with respect to figure 1a to determine a state of health based performance assessment indicator.

- 5 The first step A of this method a set of current and voltage measurements are loaded into the processor memory.

Next at step B a pre-processing operation is undertaken to improve the accuracy of the results obtained by the processor. The voltage and current data is subjected to a windowing pre-processing algorithm and is filtered to have a linear ramp component removed at this step.

Next at step C a computation is completed to compute magnitude and phase of the voltage and the current at selected test current frequencies. In the embodiment shown a discrete Fourier transform is applied to the data to resolve this information.

At step D a computation is executed to compute the complex impedance  $Z$  for particular frequencies of test currents by dividing voltage values by current values.

At step E the processor instantiates a circuit simulation model for the battery by defining the parameters of a sequence of fractionally arranged constant phase elements.

At step F the circuit simulation model generated is used to make a comparison to a maximum charge storage capacity target to indicate the state of health of the battery being assessed. At this stage a comparison is also made with stored state of health indications generated at prior times to identify any trends in the state of health of the battery.

Figure 4b shows a flowchart of calculation steps performed by the processor shown with respect to figure 1ab to determine a state of health based performance assessment indicator.

In the embodiment shown steps A, B, C and D are the same as discussed above with respect to figure 4a, with voltage and current measurements

being loaded to memory, undergoing a pre-processing operation, and voltage and current magnitude and phase being computed at selected test current frequencies. Step D is an executed to compute the complex impedance  $Z$  for particular frequencies of test currents by dividing voltage values by current values.

At step E computed values of impedance associated with different frequencies of test currents are applied as cross-referencing parameters to a lookup table loaded to processor memory. The stored entries of this table are pre-calculated to provide a numerical metric indication of battery state of health using previously prepared calibration data for the specific type of battery being assessed. Therefore in this embodiment a circuit simulation model does not need to be instantiated and run by a processor at this stage.

At step F the identified table entry isolated by the input impedance and frequency values is retrieved and displayed to a user to indicate the state of health performance of the battery. Again at this stage a comparison is also made of stored state of health indications generated at prior times to identify any trends in the state of health battery.

Figures 5a and 5b show exemplary representations of equivalent circuit models used in a circuit simulation model implemented in a further aspect of the invention.

In various embodiments the processor can be used to calculate a series of impedance values for the battery, each of these impedances being associated with a particular frequency of alternating test current. These impedances can then be used as input parameters to define each of the components shown in these two equivalent circuit models.

Figure 5a illustrates an equivalent circuit model for a battery which is composed from a single CPE constant phase element provided in combination with a single series resistance  $R_s$ .

The parameters of the CPE component are defined using the rate of change of calculated impedance values with frequency, and the zero offset of calculated impedance values applied against frequency. The additional series

resistance  $R_s$  is defined by a measurement of the terminal voltage and current exhibited when a direct current signal is applied to the battery.

Figure 5b shows an alternative circuit model where the single CPE component of figure 5b is substituted for an equivalent set of  $n$  fractionally arranged constant phase element fractional capacitor components –  $CPE/n$ . This equivalent split assembly replaces the single CPE component with  $n$  smaller CPE components,  $CPE/n$ , connected in parallel with an intervening resistance  $R_x/n$  to the same series resistance as before,  $R_s$ .

Figure 6 provides an indicative comparative plot of current against time for different frequencies of test current provided in accordance with another aspect of the invention.

In the embodiment shown the processor is configured to control the amplitude and frequency of the alternating test current applied to a battery. These controls are applied to avoid overcharging the battery during a measurement period as test currents are supplied to the battery.

As can be seen from figure 6 the amplitude of an alternating test current is set based on the frequency of the signal being applied and the capacity of the battery being assessed. The 188  $\mu\text{Hz}$  test current has the shortest wavelength shown, so is allowed to exhibit the highest current peak. Comparatively the 71 and 27  $\mu\text{Hz}$  test currents have increasingly longer wavelengths and need to be applied for longer times, so the current peak of each is progressively limited by the operation of the processor. In this way the test currents applied can deliver or remove approximately 10 percent or less of the charge capacity of the battery.

Figure 7 provides an indicative plot of impedance against frequency as used to identify a transition frequency value in various embodiments. In such embodiments a performance assessment indicator may be calculated using the lower-frequency impedance values plotted with frequency coupled to the high-frequency impedance values. As shown by figure 7 the values of impedance recorded using test currents below the impedance transition frequency suggest a straight line. Where this straight line crosses the value measured at high frequencies is an estimate of the impedance transition

frequency. This value is identified in figure 7 at the frequency where the two fitted lines intersect. In various embodiments a relatively high impedance transition frequency can indicate that a battery has a reduced ability to sustain high power energy delivery.

5

Figure 8 provides an indicative plot of impedance against frequency comparing measurements from two different batteries exhibiting different zero offset values.

10 In such embodiments a performance assessment indicator representative of the maximum charge capacity of the battery may be evaluated by, for example, extrapolating a y-axis intercept value for plotted impedance measurements against test current frequency, or alternatively comparing impedance values at a selected predetermined frequency value below the  
15 impedance transition frequency.

As can be seen from figure 8 the lower triangle data point plot has an anticipated lower y-axis intercept when compared with the anticipated y-axis intercept of the upper square data point plot. Similarly the low frequency  
20 impedance measurements of the triangle data point plot all exhibit small zero offset values when compared with the square data point plot. This indicates that the battery associated with the triangle data point measurements has a greater storage capacity when compared with the battery associated with the square data point measurements.

25

In the preceding description and the following claims the word "comprise" or equivalent variations thereof is used in an inclusive sense to specify the presence of the stated feature or features. This term does not preclude the presence or addition of further features in various embodiments.

30

It is to be understood that the present invention is not limited to the embodiments described herein and further and additional embodiments within the spirit and scope of the invention will be apparent to the skilled reader from the examples illustrated with reference to the drawings. In  
35 particular, the invention may reside in any combination of features described herein, or may reside in alternative embodiments or combinations of these features with known equivalents to given features. Modifications and



variations of the example embodiments of the invention discussed above will be apparent to those skilled in the art and may be made without departure of the scope of the invention as defined in the appended claims.

5

**What we claim is:**

1. A battery performance assessment apparatus which includes  
5 two terminal connectors configured to electrically connect the  
assessment apparatus to the positive and negative terminals of a  
battery being assessed, and  
a response measurement system configured to measure the terminal  
voltage and current of the battery when supplied with at least one  
10 alternating test current having a frequency less than 1 Hz and/or less  
than an impedance transition frequency associated with the battery  
being assessed, and  
a processor in communication with the response measurement system  
and being configured to output a performance assessment indicator for  
15 the battery being assessed by calculating at least one impedance for  
the battery using terminal voltage and current measurements  
communicated by the response measurement system.
2. A battery performance assessment apparatus as claimed in claim 1  
20 which includes a test current source configured to supply at least one  
alternating test current to the battery being assessed, said at least one  
alternating test current having a frequency less than 1 Hz and/or less  
than an impedance transition frequency associated with the battery  
being assessed.
- 25 3. A battery performance assessment apparatus as claimed in claim 1 or 2  
wherein the test current source is provided by a dedicated alternating  
current generation circuit.
- 30 4. A battery performance assessment apparatus as claimed in claim 1 or 2  
wherein the test current source incorporates switching electronics  
connected across two or more batteries.
- 35 5. A battery performance assessment apparatus as claimed in claim 1 or 2  
wherein the test current source is provided by regular load and  
charging circuits.

- 5 6. A battery performance assessment apparatus as claimed in any one of claims 1 to 5 wherein the processor is programmed to implement a circuit simulation model which uses the terminal voltage and current measurements communicated to the processor as input parameters to define at least one constant phase element fractional capacitor to simulate the battery being assessed.
- 10 7. A battery performance assessment apparatus as claimed in any one of claims 1 to 5 wherein the processor is programmed to implement a circuit simulation model which uses the terminal voltage and current measurements communicated to the processor as input parameters to define a plurality of fractionally arranged constant phase element fractional capacitor components to simulate the battery being assessed.
- 15 8. A battery performance assessment apparatus as claimed in any one of claims 1 to 7 wherein a performance assessment indicator is determined using voltage and current measurements recorded during a single measurement period in response to several different frequencies of test currents.
- 20 9. A battery performance assessment apparatus as claimed in any one of claims 1 to 7 wherein a performance assessment indicator is determined using multiple voltage and current measurements recorded during different measurement periods in response to the same test current.
- 25 10. A battery performance assessment apparatus as claimed in any one of claims 1 to 9 wherein the test current source applies a composite test current signal formed from the summation of two or more alternating test currents with different frequencies.
- 30 11. A battery performance assessment apparatus as claimed in any one of claims 1 to 10 wherein a performance assessment indicator is calculated using the rate of change of calculated impedance values with frequency.
- 35

12. A battery performance assessment apparatus as claimed in any one of claims 1 to 10 wherein a performance assessment indicator is calculated using the transition frequency value.
- 5 13. A battery performance assessment as claimed in any one of claims 1 to 10 wherein a performance assessment indicator is calculated using at least one impedance zero offset value.
- 10 14. A battery performance assessment apparatus as claimed in any one of claims 1 to 10 wherein a performance assessment indicator is calculated using a transition bandwidth value.
- 15 15. A battery performance assessment apparatus as claimed in any one of claims 1 to 14 wherein the assessment apparatus applies a test current for at least one cycle of the frequency of the test current.
- 20 16. A battery performance assessment apparatus as claimed in any one of claims 1 to 15 which includes a temperature sensor placed in close proximity to the battery being assessed.
- 25 17. A battery performance assessment apparatus as claimed in any one of claims 1 to 16 wherein at least one component of the processor is located remotely from the terminal connectors and response measurement system.
- 30 18. A battery performance assessment apparatus as claimed in any one of claims 1 to 17 wherein the processor is configured to control the amplitude and frequency of the alternating test current applied to a battery.
- 35 19. A battery performance assessment apparatus as claimed in claim 18 wherein the amplitude of an alternating test current is set based on the frequency of the signal being applied and the capacity of the battery being assessed.

20. A battery performance assessment apparatus as claimed in any one of claims 1 to 19 wherein the test current applied delivers or removes approximately 10 percent or less of the charge capacity of the battery.
- 5 21. A battery performance assessment apparatus as claimed in any one of claims 1 to 20 wherein the processor is configured to execute a preliminary charge state fixing process prior to applying an alternating test current to a battery.

10

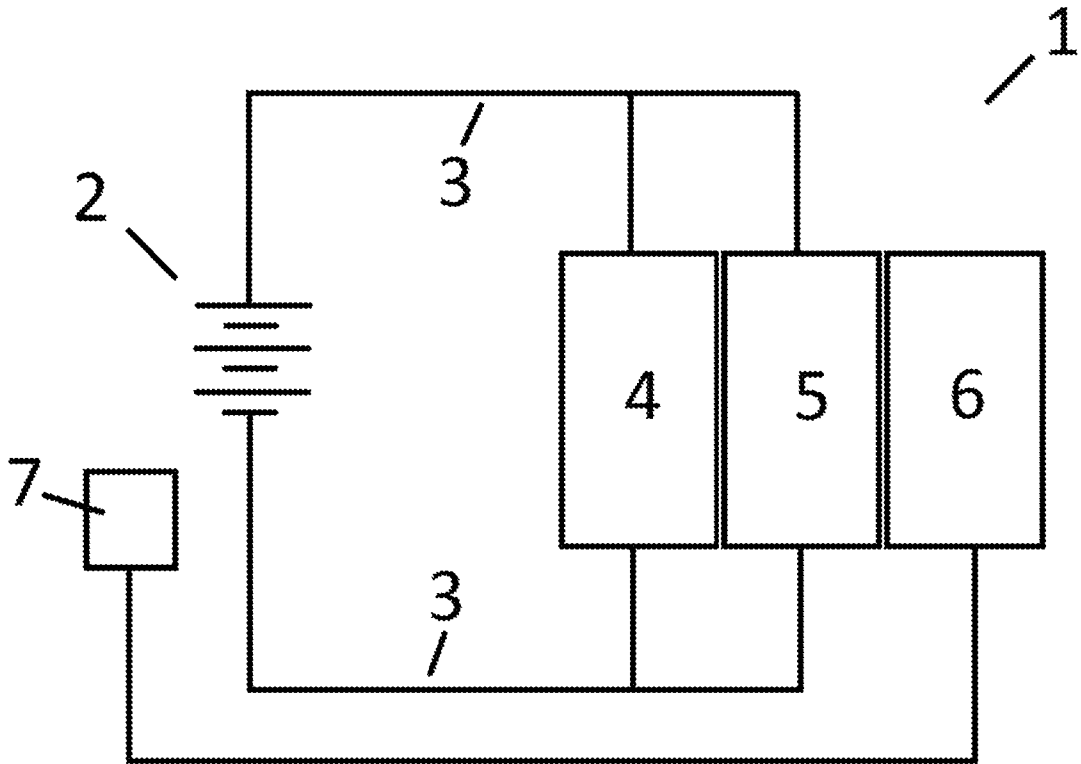


Figure 1a

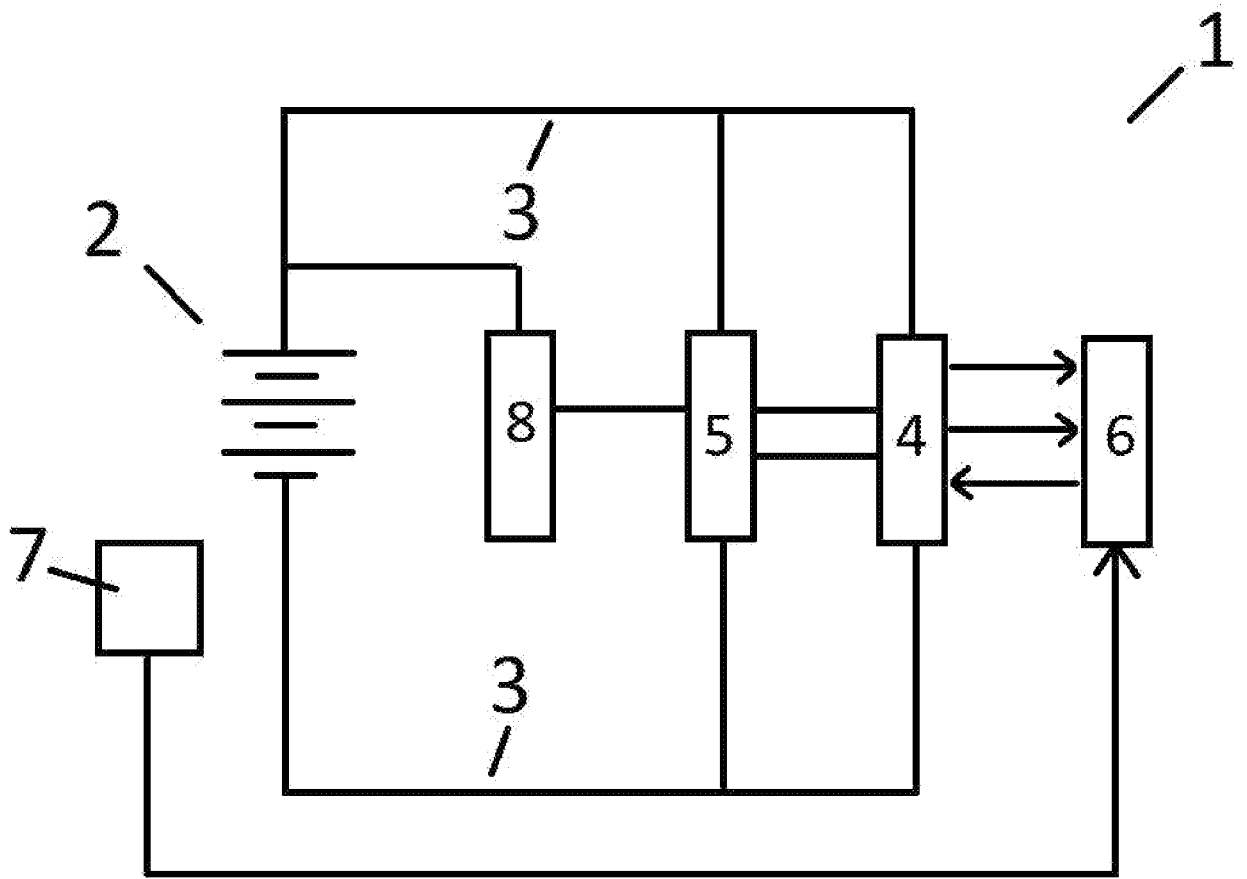
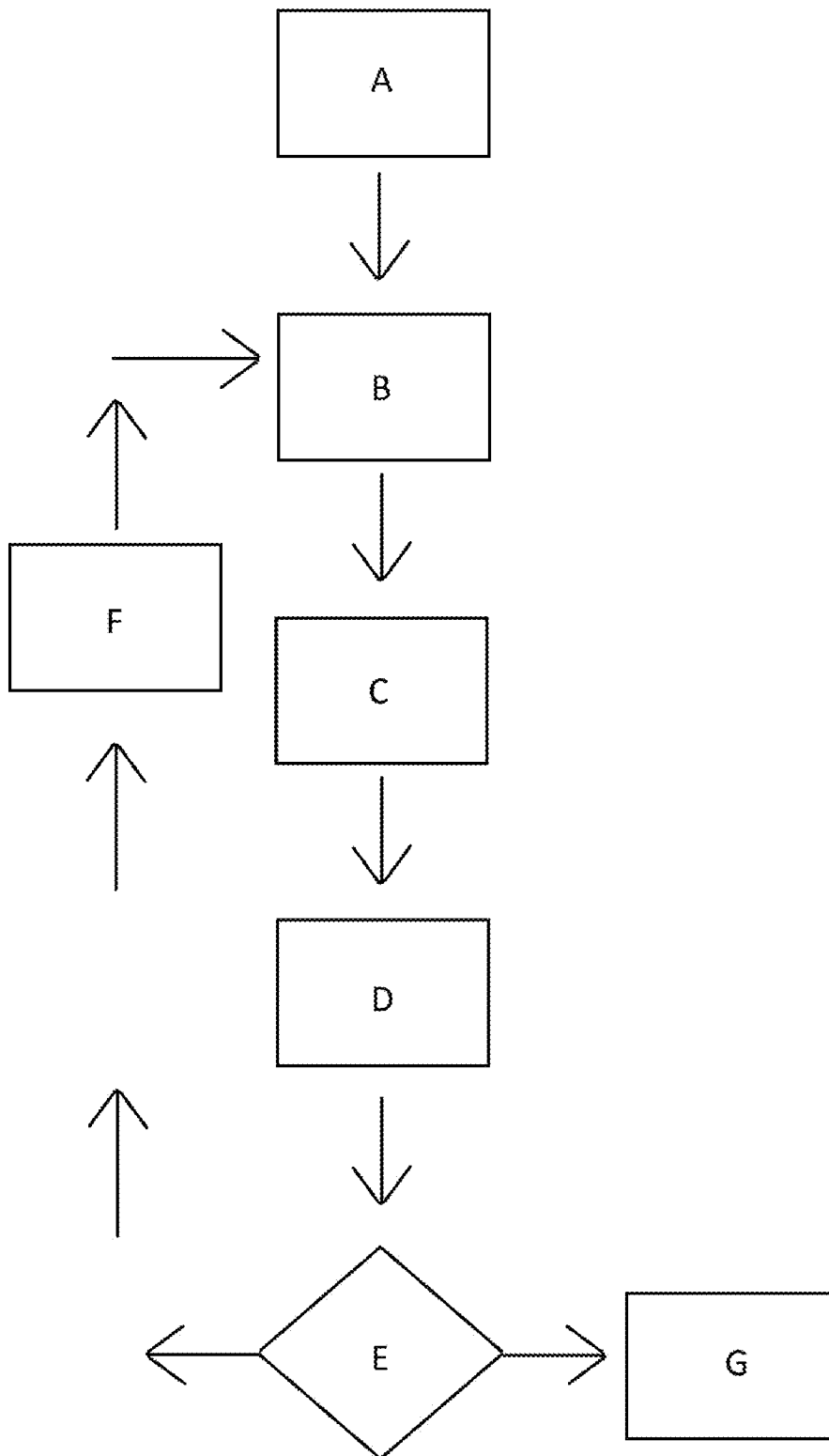
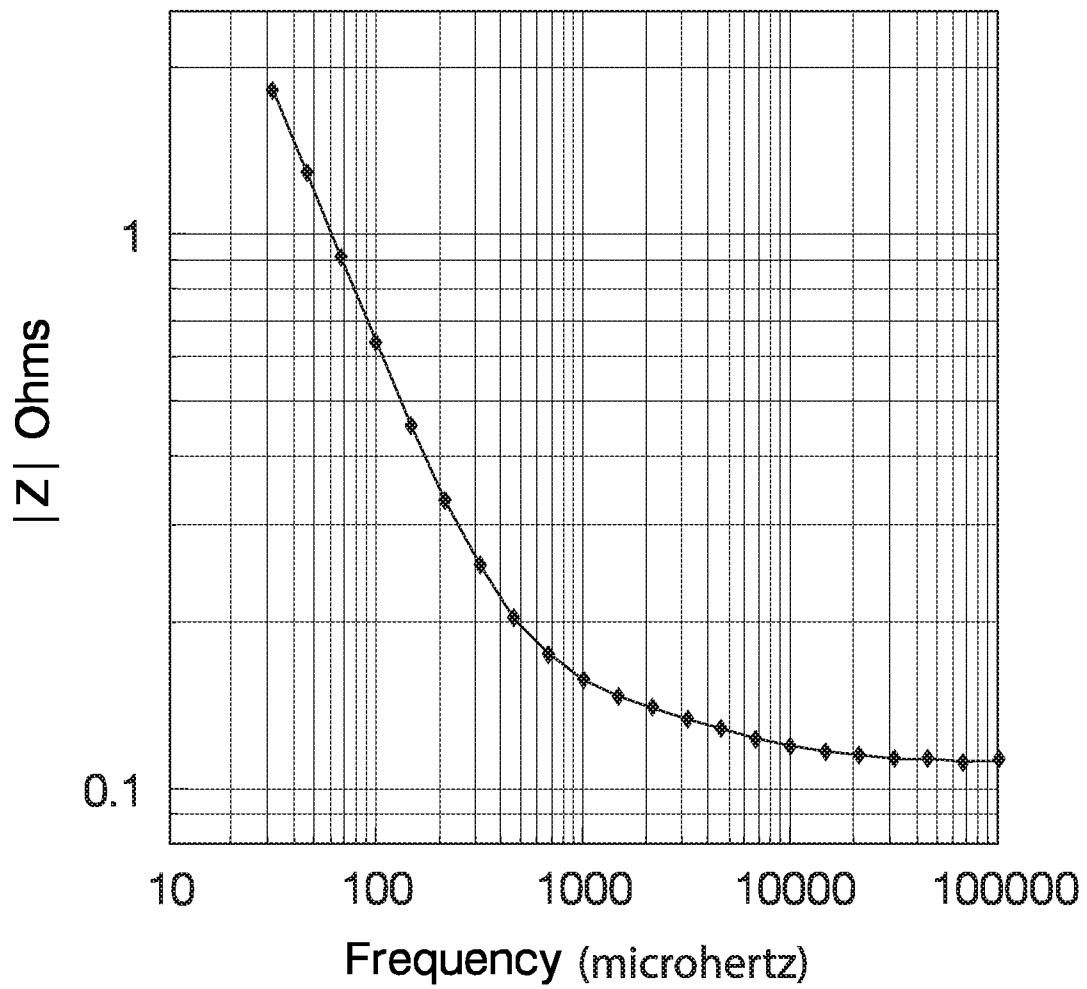


Figure 1b

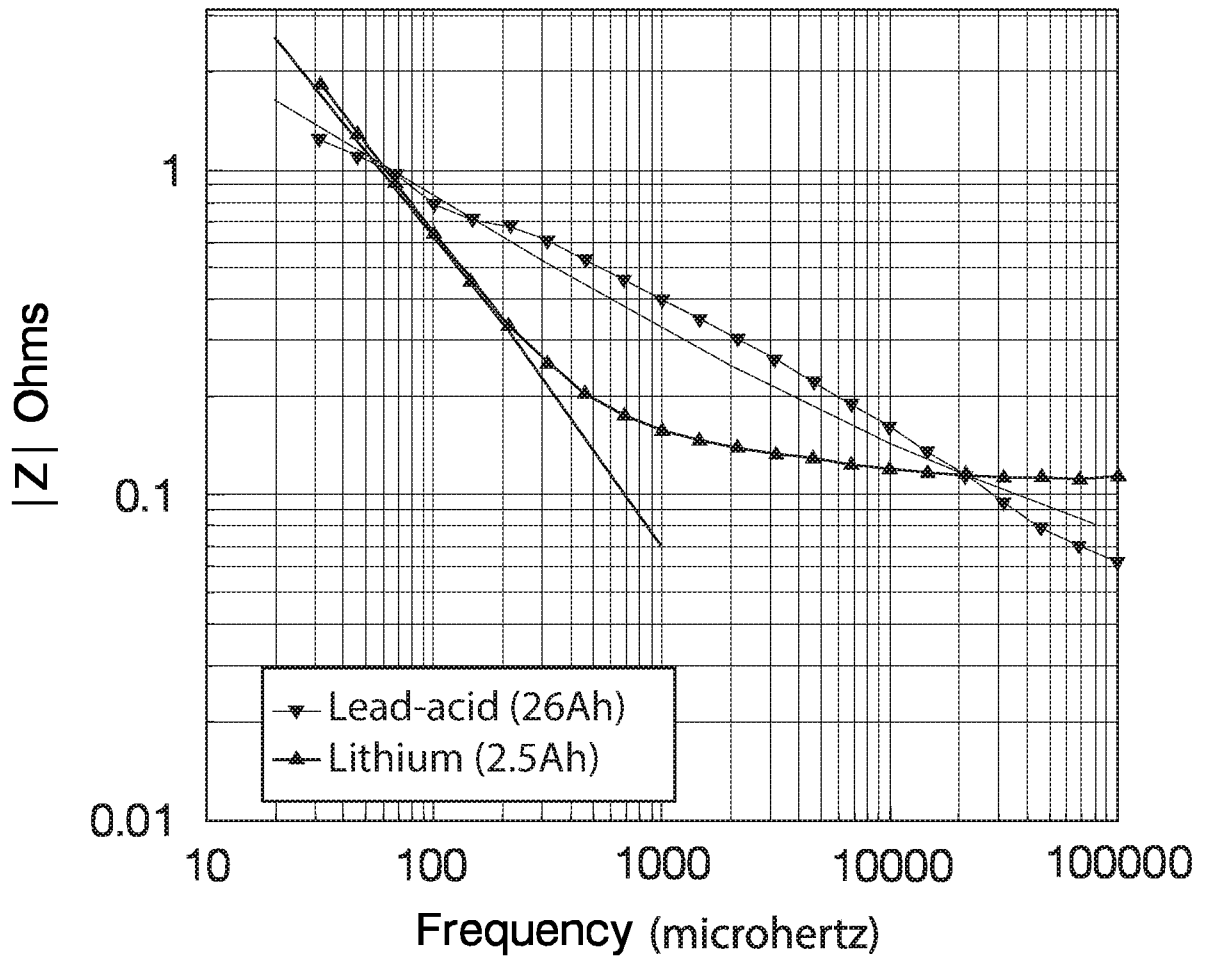
Figure 2







**Figure 3a**



**Figure 3b**

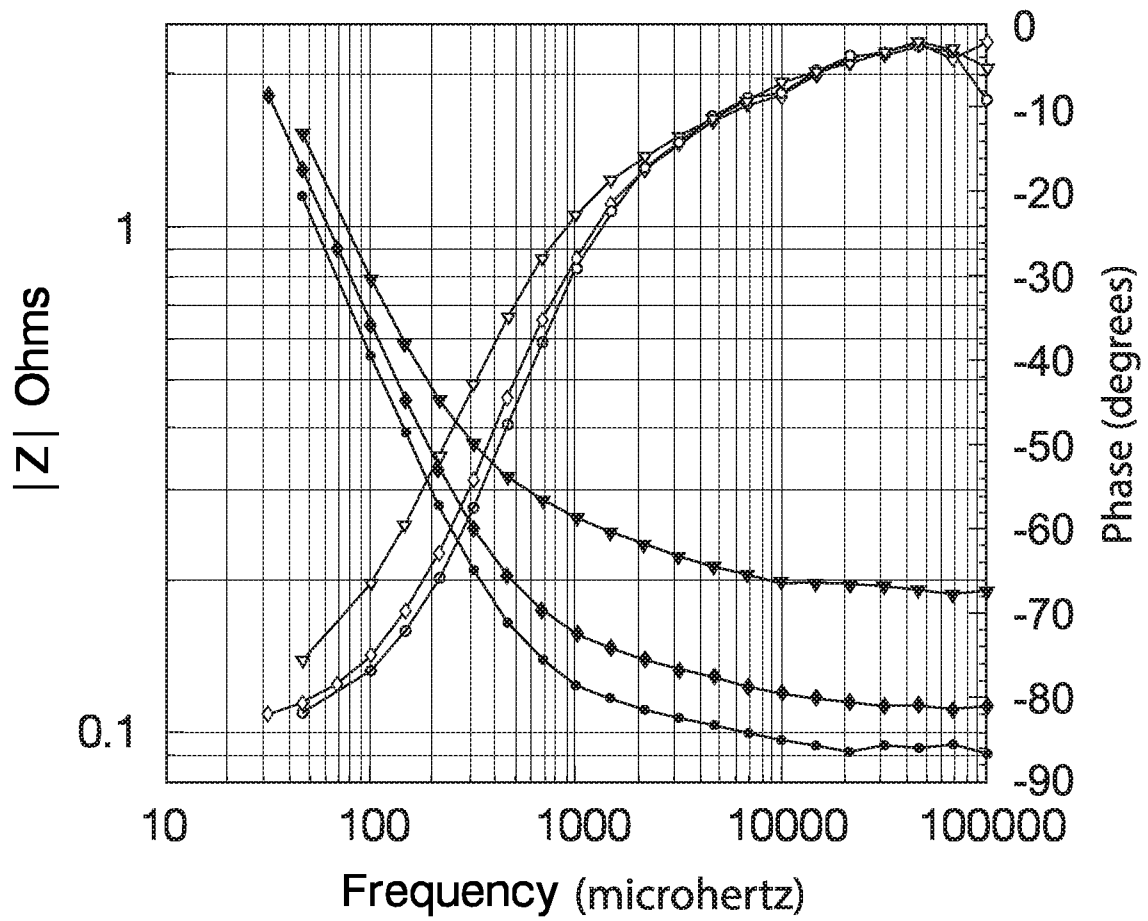
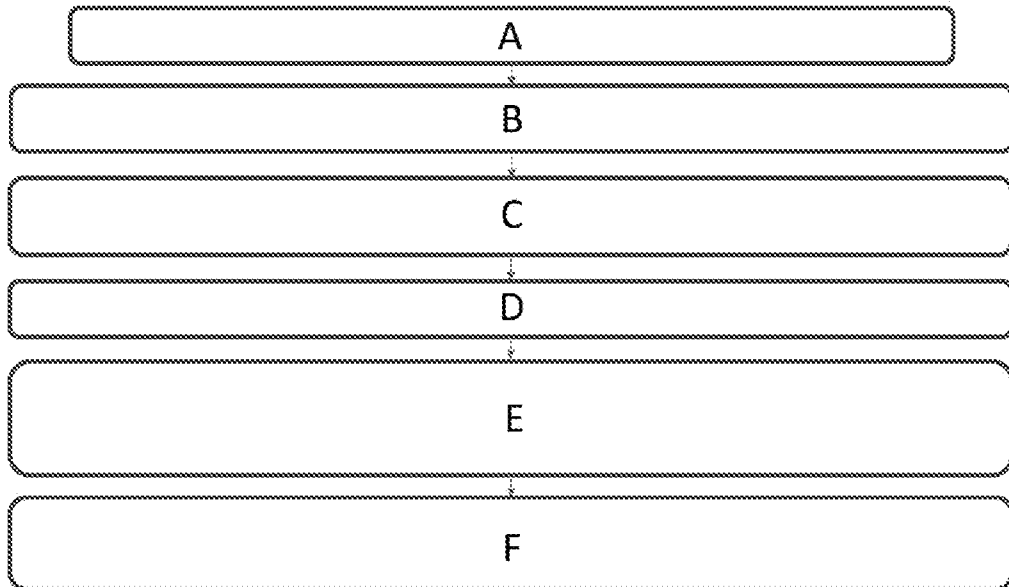
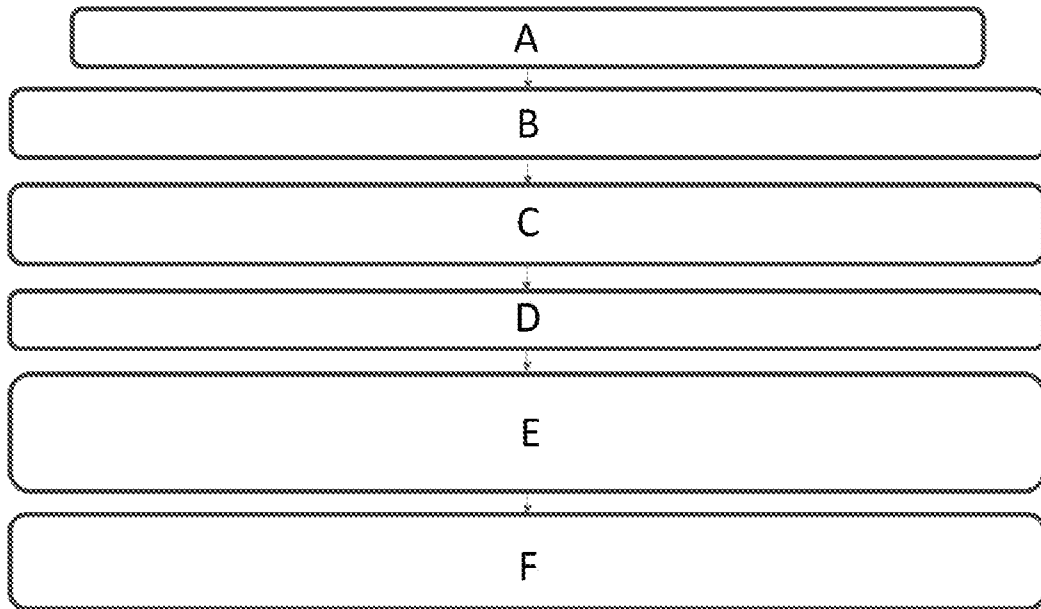


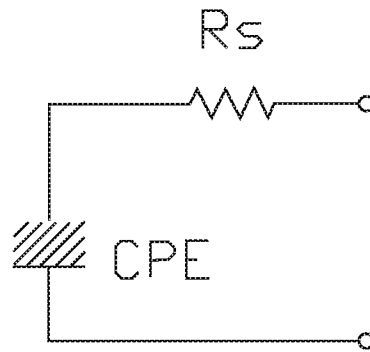
Figure 3c



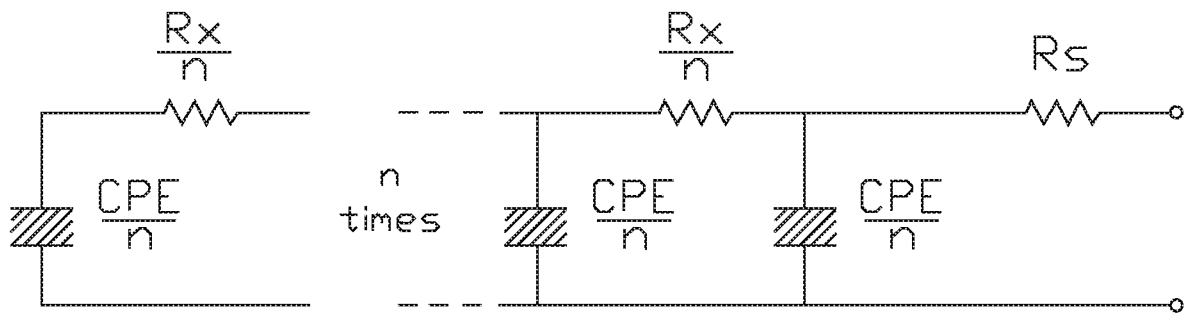
**Figure 4a**



**Figure 4b**



**Figure 5a**



**Figure 5b**

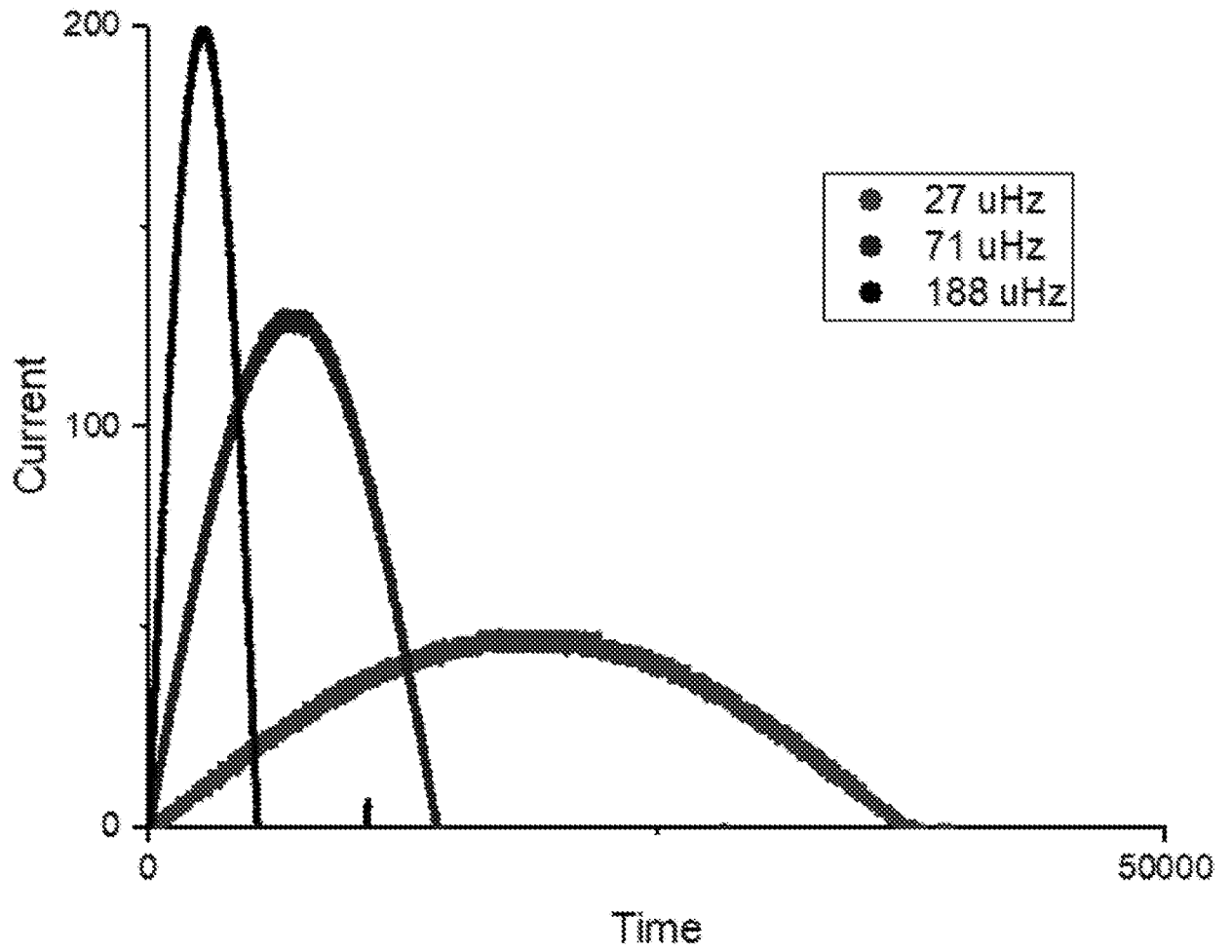
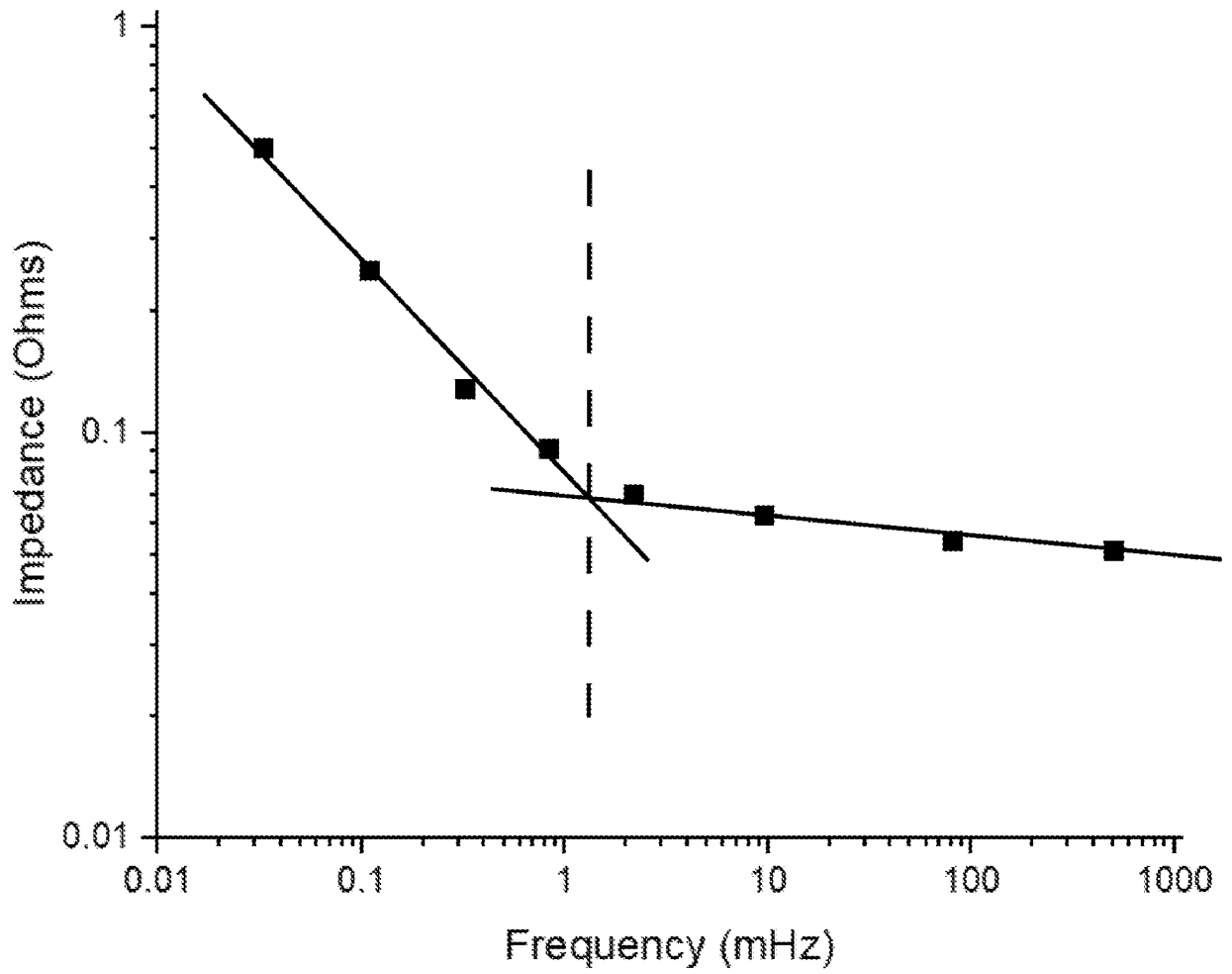


Figure 6



**Figure 7**



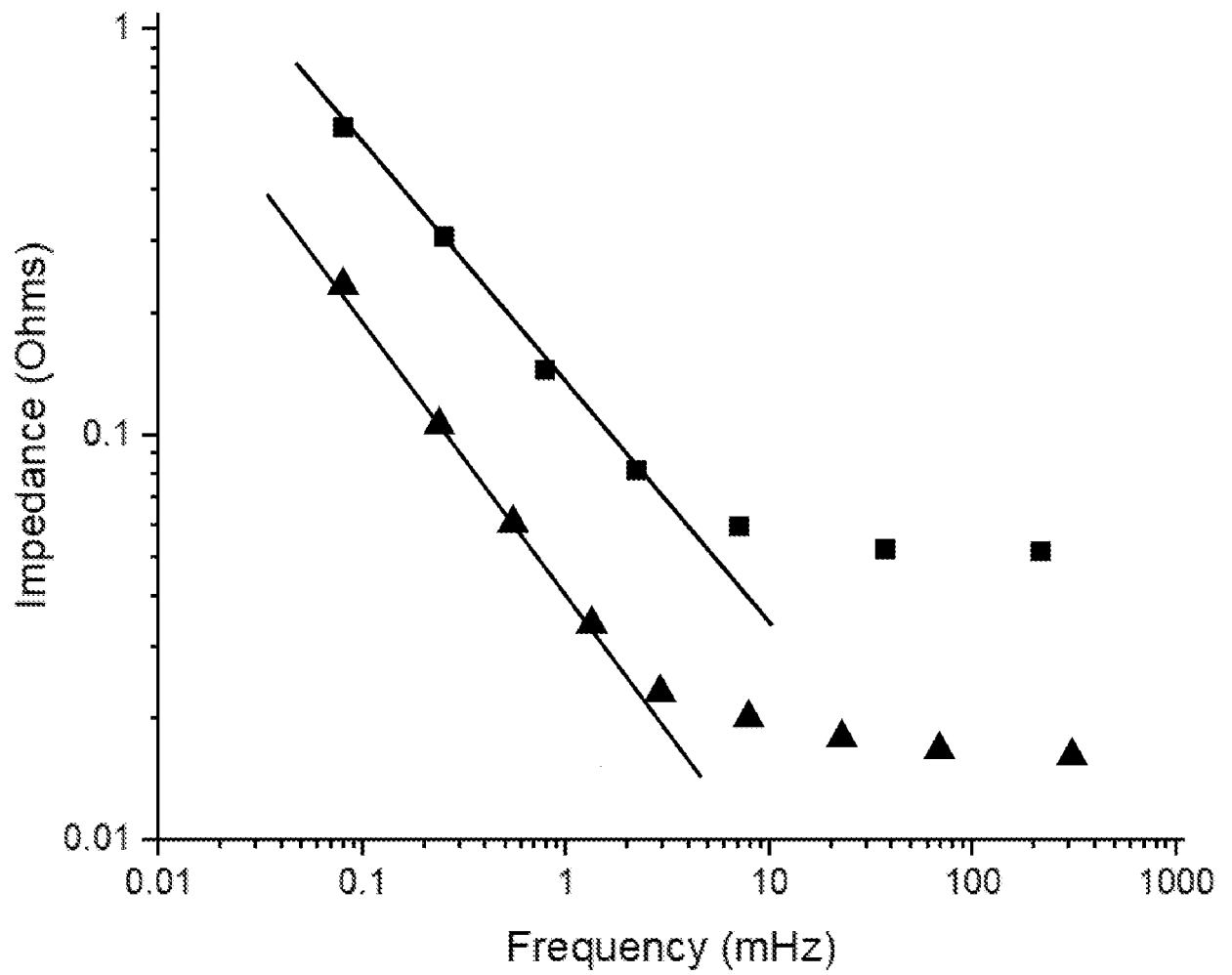


Figure 8

## A. CLASSIFICATION OF SUBJECT MATTER

**G01R 31/392 (2019.01)**  
**G01R 31/36 (2020.01)****G01R 31/389 (2019.01)****G01R 31/3842 (2019.01)****G01R 31/385 (2019.01)**

According to International Patent Classification (IPC) or to both national classification and IPC

## B. FIELDS SEARCHED

Minimum documentation searched (classification system followed by classification symbols)

Documentation searched other than minimum documentation to the extent that such documents are included in the fields searched

Electronic data base consulted during the international search (name of data base and, where practicable, search terms used)

Databases: PATENW (EPODOC, WPIAP, TXTE) with classification marks (G01R31/382, G01R31/386, G01R31/389, G01R31/392) and keywords (impedance, transition, match, battery, capacitor, performance, health, assessment, alternating current, sinusoidal, 1 HZ, constant phase) and similar terms.

Databases: INSPEC with keywords (battery, capacitor, performance, health, assessment, impedance, transition, frequency, alternating current, sinusoidal) and similar terms.

Databases: Google Patents, Google with classification marks (G01R31/392) and keywords (battery, performance, assessment, impedance, transition, frequency, current, fractional) and similar terms.

Applicant/Inventor name searched in ESPACENET, Google Patents and internal databases provided by IP Australia.

## C. DOCUMENTS CONSIDERED TO BE RELEVANT

Category*	Citation of document, with indication, where appropriate, of the relevant passages	Relevant to claim No.
Documents are listed in the continuation of Box C		

 Further documents are listed in the continuation of Box C See patent family annex

* Special categories of cited documents:		
"A" document defining the general state of the art which is not considered to be of particular relevance	"T" later document published after the international filing date or priority date and not in conflict with the application but cited to understand the principle or theory underlying the invention	
"D" document cited by the applicant in the international application	"X" document of particular relevance; the claimed invention cannot be considered novel or cannot be considered to involve an inventive step when the document is taken alone	
"E" earlier application or patent but published on or after the international filing date	"Y" document of particular relevance; the claimed invention cannot be considered to involve an inventive step when the document is combined with one or more other such documents, such combination being obvious to a person skilled in the art	
"L" document which may throw doubts on priority claim(s) or which is cited to establish the publication date of another citation or other special reason (as specified)	"&" document member of the same patent family	
"O" document referring to an oral disclosure, use, exhibition or other means		
"P" document published prior to the international filing date but later than the priority date claimed		

Date of the actual completion of the international search  
3 August 2020Date of mailing of the international search report  
03 August 2020

## Name and mailing address of the ISA/AU

AUSTRALIAN PATENT OFFICE  
PO BOX 200, WODEN ACT 2606, AUSTRALIA  
Email address: pct@ipaustralia.gov.au

## Authorised officer

Christopher Hodgson  
AUSTRALIAN PATENT OFFICE  
(ISO 9001 Quality Certified Service)  
Telephone No. +61262832616

INTERNATIONAL SEARCH REPORT		International application No.
C (Continuation).		<b>PCT/NZ2020/050050</b>
DOCUMENTS CONSIDERED TO BE RELEVANT		
Category*	Citation of document, with indication, where appropriate, of the relevant passages	Relevant to claim No.
X	US 2018/0321326 A1 (JAPAN AEROSPACE EXPLORATION AGENCY) 08 November 2018 Figures 1-2, 5; Paragraphs [0018], [0053], [0068], [0075], [0090]-[0092]	1-2I
X	US 2012/0019253 A1 (ZIEGLER, et al.) 26 January 2012 Paragraphs [0011]-[0014], [0016]-[0022], [0029]-[0030], [0043]-[0050]	1-2I
A	Freeborn, Todd J. et al, 'Fractional-Order models of supercapacitors, batteries and fuel cells: a survey', Materials for Renewable and Sustainable Energy, 2015, Vol. 4 Issue 3, Article 9. Pages 1, 3-4	6-7
A	US 7616003 B2 (SATO H et al.) 10 November 2009 Abstract; Figures 1-1 to 1-3; Columns 24-26	1-2I
A	US 2014/0103934 A1 (KABUSHIKI KAISHA TOSHIBA) 17 April 2014 Figures 2-3; Paragraphs [0054]-[0060], [0070]-[0071], [0082]-[0089]	1-2I
A	US 2019/0094307 A1 (E-XTEQ EUROPE) 28 March 2019 Abstract; Figures 1, 9A to 9B; Paragraphs [0020]-[0021], [0024], [0064], [0067]	1-2I

**INTERNATIONAL SEARCH REPORT**

Information on patent family members

International application No.

**PCT/NZ2020/050050**

This Annex lists known patent family members relating to the patent documents cited in the above-mentioned international search report. The Australian Patent Office is in no way liable for these particulars which are merely given for the purpose of information.

<b>Patent Document/s Cited in Search Report</b>		<b>Patent Family Member/s</b>	
<b>Publication Number</b>	<b>Publication Date</b>	<b>Publication Number</b>	<b>Publication Date</b>
US 2018/0321326 A1	08 November 2018	US 2018321326 A1	08 Nov 2018
		US 10534038 B2	14 Jan 2020
		JP WO2016208745 A1	24 May 2018
		TW 20I710702 A	16 Mar 2017
		WO 2016208745 A1	29 Dec 2016
US 2012/0019253 A1	26 January 2012	US 2012019253 A1	26 Jan 2012
		CN 102292864 A	21 Dec 2011
		DE 102009000337 A1	22 Jul 2010
		EP 2389703 A1	30 Nov 2011
		KR 20I10124204 A	16 Nov 2011
		WO 2010084072 A1	29 Jul 2010
US 7616003 B2	10 November 2009	US 2007252601 A1	01 Nov 2007
		US 7616003 B2	10 Nov 2009
		CN 1791804 A	21 Jun 2006
		CN 10I639523 A	03 Feb 2010
		CN 10I639523 B	27 Jul 2011
		EP 1650575 A1	26 Apr 2006
		EP 2472277 A2	04 Jul 2012
		EP 2613165 A1	10 Jul 2013
		EP 2613165 B1	24 Sep 2014
		EP 2626716 A2	14 Aug 2013
		EP 2626716 B1	16 Sep 2015
		JP 2005091217 A	07 Apr 2005
		JP 4015092 B2	28 Nov 2007
		JP 2005221487 A	18 Aug 2005
		JP 4360621 B2	11 Nov 2009
		JP 2005100969 A	14 Apr 2005
		JP 4494904 B2	30 Jun 2010
JP 2005037380 A	10 Feb 2005		
JP 4646194 B2	09 Mar 2011		
JP 2010223968 A	07 Oct 2010		
JP 5323761 B2	23 Oct 2013		
JP 2010156702 A	15 Jul 2010		

Due to data integration issues this family listing may not include 10 digit Australian applications filed since May 2001.

Form PCT/ISA/210 (Family Annex)(July 2019)

**INTERNATIONAL SEARCH REPORT**

Information on patent family members

International application No.

**PCT/NZ2020/050050**

This Annex lists known patent family members relating to the patent documents cited in the above-mentioned international search report. The Australian Patent Office is in no way liable for these particulars which are merely given for the purpose of information.

<b>Patent Document/s Cited in Search Report</b>		<b>Patent Family Member/s</b>	
<b>Publication Number</b>	<b>Publication Date</b>	<b>Publication Number</b>	<b>Publication Date</b>
		JP 5367604 B2	11 Dec 2013
		US 2006186890 A1	24 Aug 2006
		US 7362074 B2	22 Apr 2008
		WO 2005015252 A1	17 Feb 2005
US 2014/0103934 A1	17 April 2014	US 2014103934 A1	17 Apr 2014
		US 9207286 B2	08 Dec 2015
		CN 102183730 A	14 Sep 2011
		CN 102183730 B	19 Aug 2015
		EP 2339361 A2	29 Jun 2011
		JP 2011133443 A	07 Jul 2011
		JP 5586219 B2	10 Sep 2014
		US 2012007556 A1	12 Jan 2012
		US 9239363 B2	19 Jan 2016
US 2019/0094307 A1	28 March 2019	US 2019094307 A1	28 Mar 2019
		CN 109557472 A	02 Apr 2019
		WO 2019064138 A1	04 Apr 2019

**End of Annex**